



Aliteam Stereo Headset Kit (938HM-TX11) User Manual

Version 1.4



Aliteam Corp. Co., Ltd.
Copyright © 2005. All rights reserved

FCC Statement	1
Bluetooth Introduction	2
Package List	3
Aliteam Stereo Headset Kit	3
Features	4
Bluetooth Headset	4
AV / SKYPE Dongle.....	4
Function	5
Stereo Headset.....	5
AV / SKYPE Dongle.....	7
How to Use	8
Before You Use.....	8
Responding to Cell Phone	9
Enjoying the Superior Music Quality	10
Switching Between Music and Phone Calls.....	11
Call Transfer	12
Before You Use.....	13
AV Mode	13
SKYPE Mode	14
SKYPE Dongle Software Installation	14
SKYPE Software Setup	18
Hardware Installation	19
Responding SKYPE Calls.....	21
FAQ	22
Bluetooth Headset	22
Specification – Bluetooth Stereo Headset	31
Specification – Bluetooth AV / SKYPE Dongle	32
Technical Support	33
Appendix A– Supported Cell Phone List	33
Appendix B – Supported Headset List (SKYPE Mode)	34

FCC Statement

15.21

You are cautioned that changes or modifications not expressly approved by the part responsible for compliance could void the user's authority to operate the equipment.

15.105(b)

This equipment has been tested and found to comply with the limits for a Class B digital device, pursuant to part 15 of the FCC rules. These limits are designed to provide reasonable protection against harmful interference in a residential installation. This equipment generates, uses and can radiate radio frequency energy and, if not installed and used in accordance with the instructions, may cause harmful interference to radio communications. However, there is no guarantee that interference will not occur in a particular installation. If this equipment does cause harmful interference to radio or television reception, which can be determined by turning the equipment off and on, the user is encouraged to try to correct the interference by one or more of the following measures:

- Reorient or relocate the receiving antenna.
- Increase the separation between the equipment and receiver.
- Connect the equipment into an outlet on a circuit different from that to which the receiver is connected.
- Consult the dealer or an experienced radio/TV technician for help.

Operation is subject to the following two conditions:

- 1) this device may not cause interference and
- 2) this device must accept any interference, including interference that may cause undesired operation of the device.

FCC RF Radiation Exposure Statement:

This equipment complies with FCC radiation exposure limits set forth for an uncontrolled environment. End users must follow the specific operating instructions for satisfying RF exposure compliance. This transmitter must not be co-located or operating in conjunction with any other antenna or transmitter.

Bluetooth Introduction

Bluetooth is a global wireless standard for enabling short-range wireless connections. It is a simple and instant radio solution that allows different devices to talk to one another. Bluetooth eliminates the need for cables/wires/cords between devices such as mobile phones and headphones. Bluetooth facilitates fast and secure transmissions of both voice and data between devices even if they are not in line-of-sight. Most Bluetooth devices are described as 'Class 2'. These are very low power and have a range of about 10 meters. Some devices are Class 1. These have range comparable to that of Wi-Fi and have a range up to 100 meters.

A limited, but growing number of devices use Bluetooth at present. Devices that are starting to have Bluetooth connectivity built in include:

- Headsets
- Headphone
- Cell Phones
- PDAs
- Laptops
- Digital cameras and camcorders
- Printers
- Scanners
- Keyboards and Mice
- In-car handsfree kits
- GPS navigation receivers
- Home appliances (microwaves, washers, driers, refrigerators)

In addition, add on Bluetooth adapters are available for computers (i.e. with a USB interface) and for PDAs.

Package List

The following checked items should be in the package.

Items	Quantity
<input checked="" type="checkbox"/> Bluetooth Headset	1
<input checked="" type="checkbox"/> Bluetooth AV / SKYPE Dongle	1
<input checked="" type="checkbox"/> CD with Software	1

BluePacket Stereo Headset Kit

Thank you for choosing Aliteam Stereo Headset Kit. For the stereo headset, it is unique and different from most Bluetooth headsets in the market for its good integration of Advanced Audio Distribution Profile (A2DP), Headset (HS) Profiles and Handsfree (HF) profiles. For AV/Skype Dongle, it supports the Headset Gateway (HSGW) Profile and the A2DP.

The stereo headset kit is a multifunctional device that provides users with dual capability for listening to music in a wireless mode as well as answering the cell phone. While the phone rings, the conversation can be transferred back and forth between the headset and the Bluetooth enabled cell phone, even when the music is being streamed.

It provides PC users with dual capability to listen to the music or link to SKYPE wirelessly with the Bluetooth headset.

Features

Bluetooth Headset

- Superior audio quality - Delivers 48 kHz, 16 bit stereo music (near CD quality audio).
- Accept / end / reject phone calls – Accept / end / reject phone calls with the button on the headset.
- Reject calls – If you don't want to answer the call, you can reject it by long pressing the answer button when the phone is ringing.
- Call transfer – The phone calls can be transferred between the cell phone and the headset. When the headset has been paired with the cell phone but these two devices are not linked, you can use this function to link the headset with the cell phone. You do it vice versa to disconnect these two devices.
- Listen to music and respond to phone calls – Enable switching between music and calls made to your Bluetooth enabled cell phone.
- Wireless mobility – It is very convenient without being restricted by cables.
- No “Line-of-sight” restriction - Unlike infrared devices, it offers you a wide transmission range (up to 10 meters).
- Long battery life – The self-contained battery of can be easily charged and long battery life ensures hassle free music experience.
- Supported profiles - Supports A2DP, Headset and Handsfree profiles of the Bluetooth specification, version 1.1.
- Good compatibility with the Bluetooth AV/Skype Dongle.

AV / SKYPE Dongle

AV Mode

- Plug and Play – You don't need to install any software or change any PC settings to use it. Just switch the dongle to AV mode and plug in the PC USB port.
- Superior audio quality - Delivers 48 kHz, 16 bit stereo music (near CD quality audio).
- Wireless mobility – It is very convenient without being restricted by cables.
- No “Line-of-sight” restriction - Unlike infrared devices, it offers you a wide transmission range (up to 10 meters).

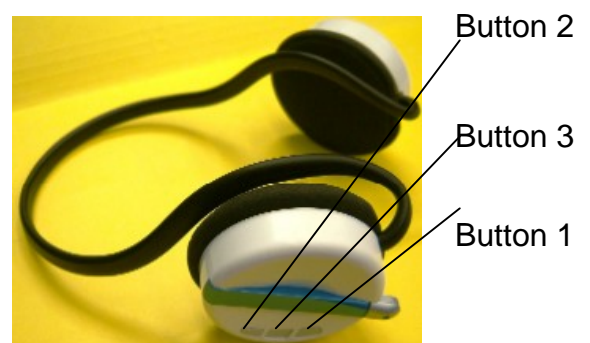
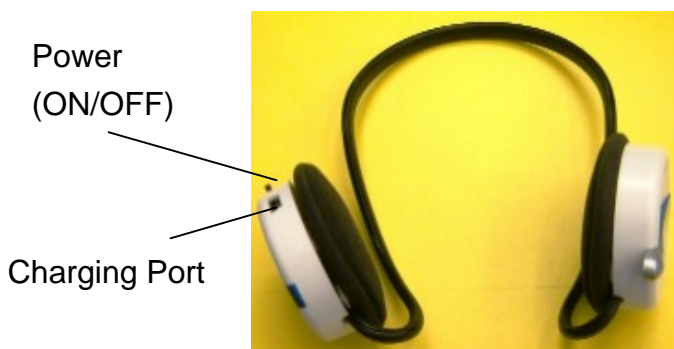
- Listen to music and respond to phone calls – If you have a Bluetooth stereo headset and a Bluetooth enabled cell phone, you can use the scenario. It enables switching between music and calls made to your cell phone.
- Supported profile - Supports A2DP profile of the Bluetooth specification.

SKYPE Mode

- Plug and Play – Easy installation. After install the software and plug in the SKYPE Dongle, you can use SKYPE with a Bluetooth headset / receiver.
- Easy Pairing – Use the “Bonding Function” to pair a Bluetooth headset. The pairing status is shown immediately.
- Supported profile - Supports Headset Gateway profile of the Bluetooth specification.

Function

Stereo Headset

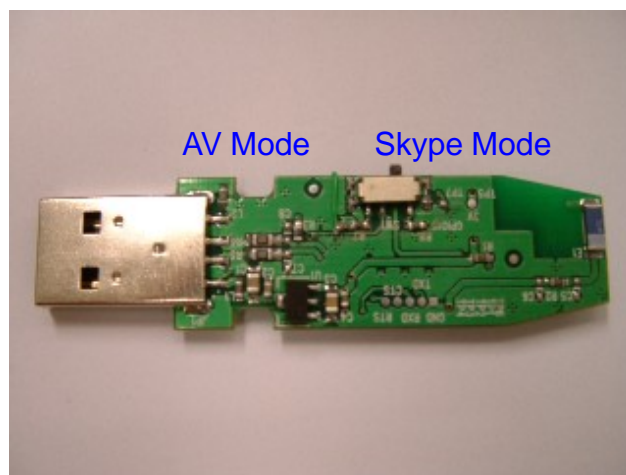
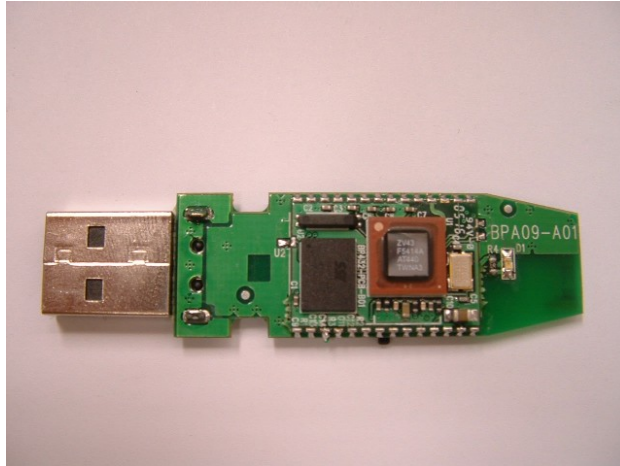


Function Code	Button 1	Button 2	Button 3	Status LED	Power LED
Phone Mode	Volume Up	Volume Down	Accept / Hang up	Flash Slowly 1 time in 2 seconds	N/A
Phone Ringing	Volume Up	Volume Down	When phone is ringing (Long Press: Reject. Short Press: Accept)	When phone is ringing, it flashes quickly 4 times in 1 second.	N/A
Music Mode	Press / Press & hold: Volume Up	Press / Press & hold: Volume Down	Call Transfer from Phone / Backward (Long Press)	Flash Slowly 1 time in 2 seconds	N/A
Idle Mode (not linked)	N/A	N/A	N/A	Flash Quickly 3 times in 2 seconds	N/A
Call Transfer	N/A	N/A	Call Transfer to Phone / Backward: Long Press	Flash Quickly 4 times in 1 second	N/A
Low Power	N/A	N/A	N/A	N/A	Flash slowly 1 time in 2 seconds
Charging	N/A	N/A	N/A	N/A	Always on. It will be turned off when charging completes.

* Short Press: Less than 3 seconds.

* Long Press: More than 3 seconds.

AV / SKYPE Dongle



Function code	Status LED	Status
AV Mode	Flash Quickly	Searching devices
	Flash Slowly	Being linked with Headset
	Always on	Idle Mode (Can't link any device at 3 minutes. Need to unplug for searching devices again.)
		Phone Mode (when you are using the headset and cell phone with the dongle at the same time)
Skype Mode	Always on	Searching or link devices

How to Use

1. Bluetooth Stereo Headset

Bluetooth Stereo Headset performs well with the AV / Skype Dongle and can be used to demonstrate the following usage scenarios:

- Responding to cell phone
Pick up calls made to the headset from Bluetooth enabled cell phones by simply pressing the jog dial. Unlike mono headsets, Stereo Headset can transfer ring / voice to both your ears with two channels. In this scenario, the ability of the headset to stream music is not utilized.
- Enjoying the superior music quality
Switch the Dongle to AV mode and plug the dongle in a USB port in PC and play music via PC. Let the music be streamed to the Stereo Headset. Users can also use another Bluetooth enabled device that supports the A2DP profile of the Bluetooth specification to play music. In this scenario the ability of the headset to pick up / drop phone calls is not utilized.
- Switching between music and phone calls
The headset can switch between listening to music and answering calls made to your Bluetooth enabled cell phone. In this scenario, the complete functionalities of the Stereo Headset are demonstrated.

Before You Use

Please make sure the battery power of the headset is sufficient. If the power is low, the power LED indicator of the headset will start to flash slowly.

Please charge the headset when you see the low power signal. When you are charging the battery, the power LED indicator will constantly on. When the battery is full, the power light of the headset will shut off automatically.

Responding to Cell Phone

1. Setting Up

Before you turn on the headset, please use the charging cable to charge them.

2. Pairing

(1) Turn on the Bluetooth enabled cell phone.

(2) Turn on the headset.

(3) Operate the Bluetooth enabled cell phone to search the headset.

**Note: Users need to keep the two devices between 2 meters in case of connection failure. The status LED indicator of the headset will flash quickly during search.*

(4) Enter PIN code “0000” when the pop-up screen is shown on the cell phone.

(5) Pairing is done while the status LED indicator start flashing slowly.

3. Connecting

(1) "Pairing" creates a link between Bluetooth enabled cell phone and Bluetooth headset. It allows the phone to remember the headset's unique Bluetooth ID.

You could add it to a list of "Paired Device" in the phone.

(2) The headset only needs to be paired ONE time with the phone before use.

(3) Once the headset is paired, it can be easily connected to the phone.

(4) If the pairing information or log were deleted from the phone, the headset must be paired with the phone again.

(5) Start to use the Bluetooth headset to pick up / drop calls in a wireless mode.

***Note:**

1. Some cell phones require that an explicit connection be established with the headset. For example, Nokia 3650 requires a Bluetooth connection to the headset be initiated and stay connected before proceeding further. Other phones may initiate a Bluetooth connection only when a call is received. Please refer to the user manual of the cell phone being used and fully understand its behavior.

2. Some cell phones send the ring indication to the headset while others do not. If your cell phone supports this feature, you should hear the ring tone of your cell phone on the headset. Phones that do not support ring indication will automatically accept the call.

4.Accepting / Rejecting Calls

If you are going to answer the phone call, you need short press button 3 less than 3 seconds. If you don't want to answer the call right now, you can reject the call by long press button 3 more than 3 seconds.

5.Re-connecting

When the headset loses connection to Bluetooth enabled cell phone, you need to repeat "Connecting" procedure to re-connect it.

6.Turning Off

Turn off the headset by setting the power switch to "off".

***Note:**

- 1.Call transfer function can not be used when the call is coming. If you long press button 3 when the phone is ringing, you will reject the coming call.*
- 2.For some cell phones, you can use call transfer function to set up the link between the headset and the cell phone. For example, Nokia cell phones can not be linked with the headset if you didn't "connect" it. But if you long press button 3, you can build up the connection between headset and cell phone.*

Enjoying the Superior Music Quality

Before using the headset to listen to music, you should make a music connection as follows:

1. Setting Up the Music

Switch the Dongle to AV mode and plug the dongle in a USB port in PC and play music via PC.

2.Connecting the Headset with the dongle

- (1) Turn on the headset. Meanwhile, you can hear the opening sound from the headset.
- (2) The headset can be automatically paired with the dongle.
- (3) When the pairing is done, the status LED indicator on the headset will start flashing slowly.

(4) Play music. You can hear music from the headset.

***Note:**

1. *It may take you a few seconds in pairing headset with the dongle for the first time. It will be quicker in searching after that.*
2. *The pin code of the headset is "0000". If you want to use another device to link with the headset, please make sure the device you used can search the pin code "0000".*

Switching Between Music and Phone Calls

1. Setting Up / Prerequisite

Please confirm the headset has been added to a list of "Paired Device" in the Bluetooth enabled cell phone first.

***Note:**

1. *If you haven't paired the headset with the Bluetooth enabled cell phone before, please refer to the section "Responding to Cell Phone".*
2. *Some cell phones require that an explicit connection be established with the headset. For example, Nokia 3650 requires a Bluetooth connection to the headset be initiated and stay connected before proceeding further. Other phones may initiate a Bluetooth connection only when a call is received. Please refer to the user manual of the cell phone being used and fully understand its behavior.*
3. *Some cell phones send the ring indication to the headset while others do not. If your cell phone supports this feature, you should hear the ring tone of your cell phone on the headset. Phones that do not support ring indication will automatically accept the call.*

2. Making the Switch

- (1) Repeat the procedure "Enjoying the Superior Music Quality" and play music.
- (2) Use the cell phone and find the headset on the "Paired Device" list. Then, operate the cell phone to connect to the headset.
- (3) When the connection is set up, the music will pause and you can switch to the cell phone mode automatically. You can start to make an outgoing call and are

able to converse over the phone.

- (4) When your conversation is done and you stop using the cell phone, the streaming of music will resume immediately and automatically.
- (5) If someone calls you, the music will pause and you can answer the phone.
- (6) After the phone call ends, the music will resume again.
- (7) You can repeat this scenario and switch freely between cell phone and music mode.

***Note:**

This switching scenario can be only applied to some cell phones. The link between the dongle and the headset may be disconnected when you press the answer button in some brands. For example, Nokia 6230 cell phone can be reproduced the scenario for several times, but Sony Ericsson T610 can not do the scenario.

3.Turning Off

If you don't want to use the dongle, please turn it off.

Call Transfer

When the headset has been paired with the cell phone, you can use the call transfer function to link the headset with the cell phone. When the link is set up and you use the headset to answer the call, it is in the phone mode. Then you can long press the button 3 to transfer the call to cell phone and talk via your cell phone.

In the phone mode, call transfer function can be enabled by long pressing button 3 more than 3 seconds in or out of conversation.

When you are listening the music, you have two ways to use the call transfer function. First, you can pick up your cell phone directly. Then you can long press button 3 to transfer the call to the headset. The music will stop and you can use the headset to answer the phone. Second, you can long press button 3 more than 3 seconds. And you can hear the ring tone in the headset. Then you can answer call by short press button one. The music will stop and you can start your conversation.

2. AV / SKYPE Dongle

A Bluetooth stereo headset performs well with the AV / SKYPE dual mode dongle and can be used to demonstrate the following usage scenarios. Please note if you only have a Bluetooth mono headset, you can only use SKYPE mode.

- **AV Mode:** Switching between music and cell phone calls
The Bluetooth stereo headset can switch between listening to music streamed from the dual mode dongle and answering calls made from Bluetooth enabled cell phones.
- **SKYPE Mode:** Use SKYPE by Bluetooth SKYPE Dongle & Headset
Accept / end calls from SKYPE by both PC and headset.

Before You Use

AV / SKYPE dual mode dongle doesn't need to be charged before using. But it requires PC Operation system is Windows XP or Windows 2000 with USB Port 1.1 or 2.0.

Note: If you are using Windows XP, please install SP2.

AV Mode

Please see the section "Enjoying the Superior Music Quality" and "Switching Between Music and Phone Calls" to experience the high music quality.

SKYPE Mode

SKYPE Dongle Software Installation

1.System Requirement

- Windows XP / Windows 2000
- USB Port.(1.1 OR 2.0)

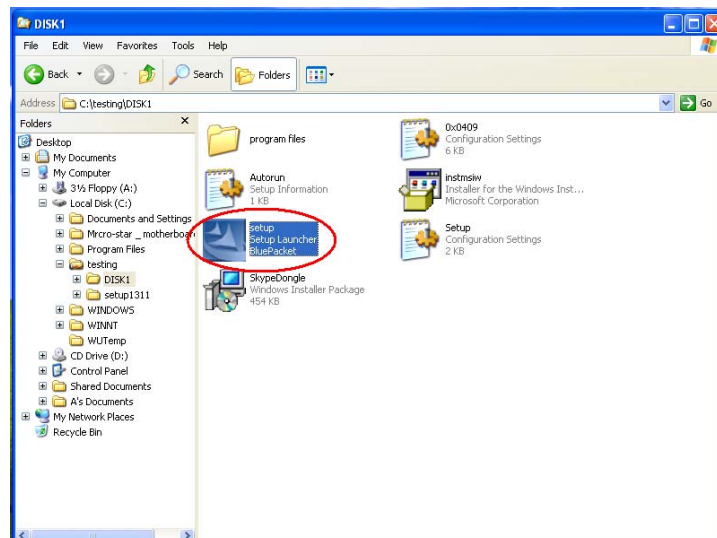
Note: If you are using Windows XP, please install SP2.

2. Installation Instruction

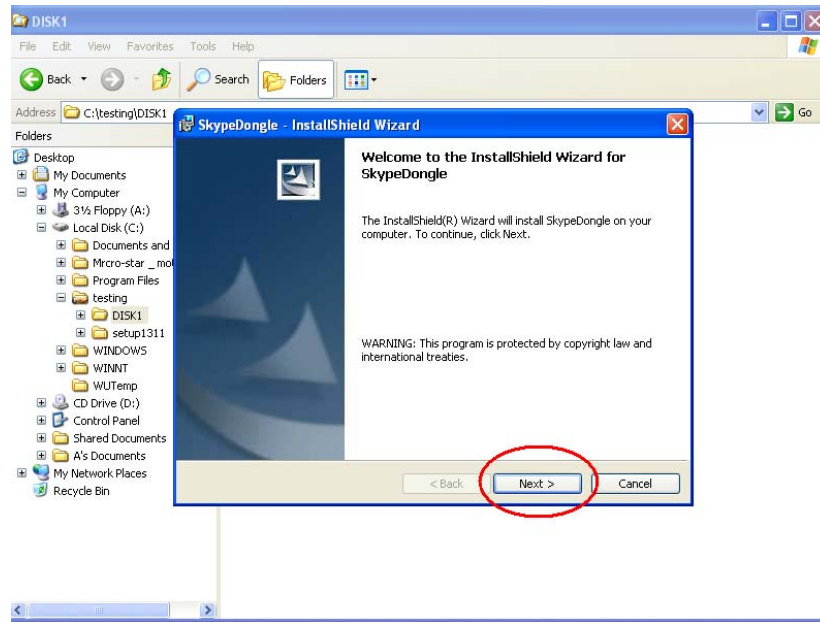
Step 1: If you have installed the SKYPE software, please exit it first. If you never install SKYPE software, please download it from SKYPE website <http://www.skype.com> and install it after you complete Aliteam SKYPE Dongle Software Installation.

Step 2: Insert the Installation CD

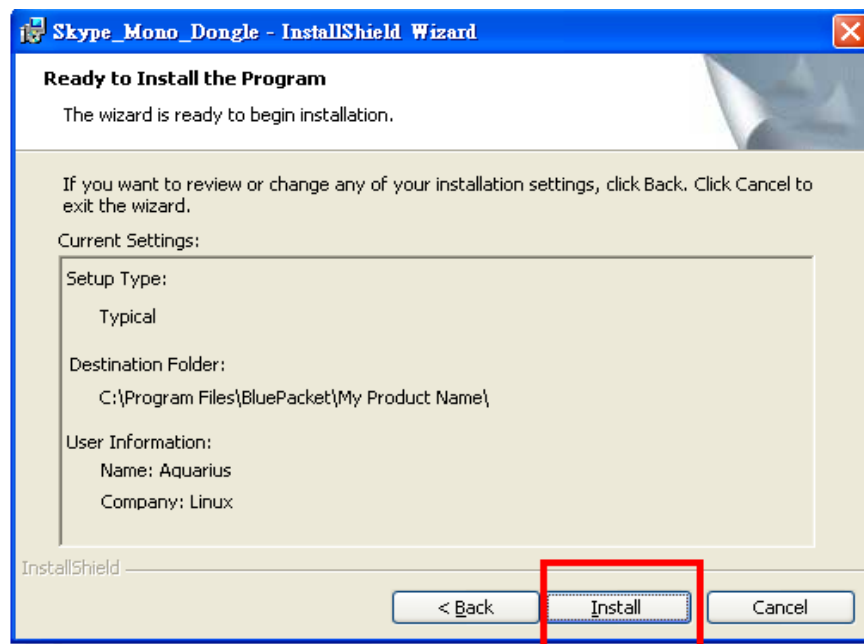
Step 3: Run the setup.exe



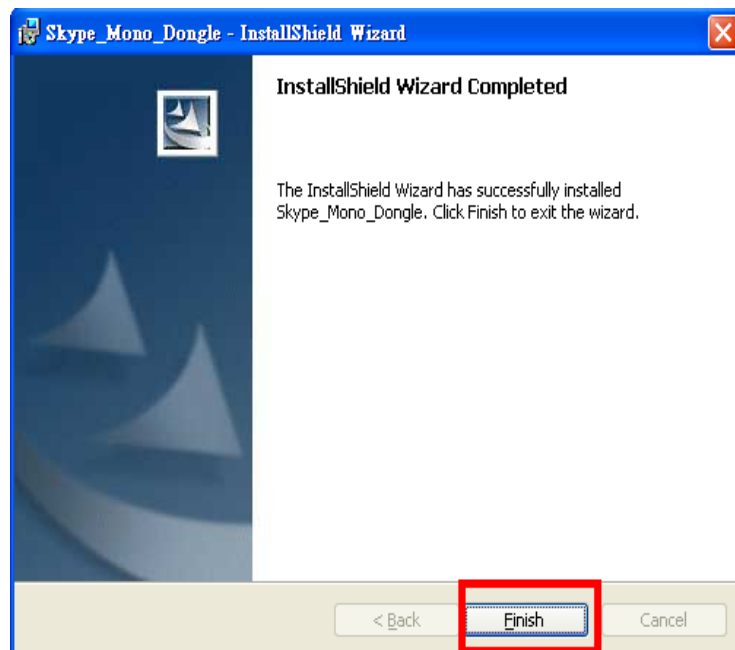
Step 4: Click "Next" Button



Step 5: Start to install



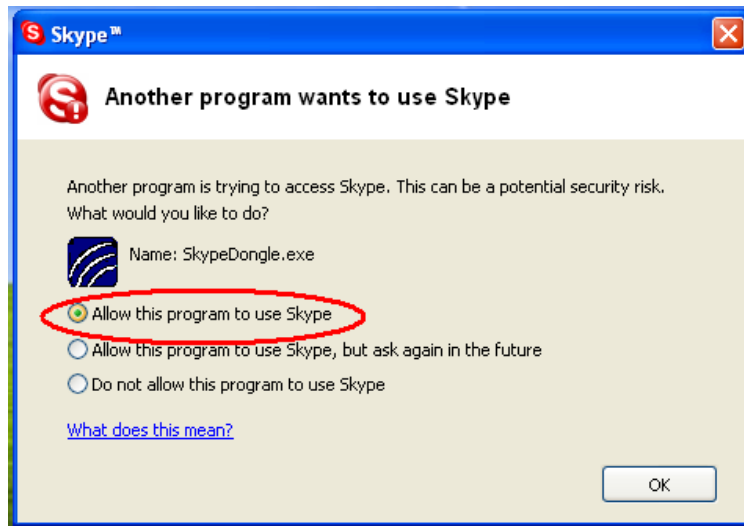
Step 6: Click “Finish” button to complete the installation



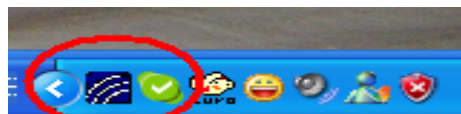
Step 7: this message might be shown up because of the firewall. Please click “Unblock” button.



Step 8: This message will be shown the first time you run our application. Please select the first option and click “OK” button.



Step 9: The BluePacket logo and SKYPE icon will be shown in the tool bar.



Step 10: Then Check the presence of “Start -> Programs -> BluePacket -> Launch SkypeDongle.exe”



SKYPE Software Setup

STEP 1: Run SKYPE

STEP 2: Select “Tools” -> “Options...”

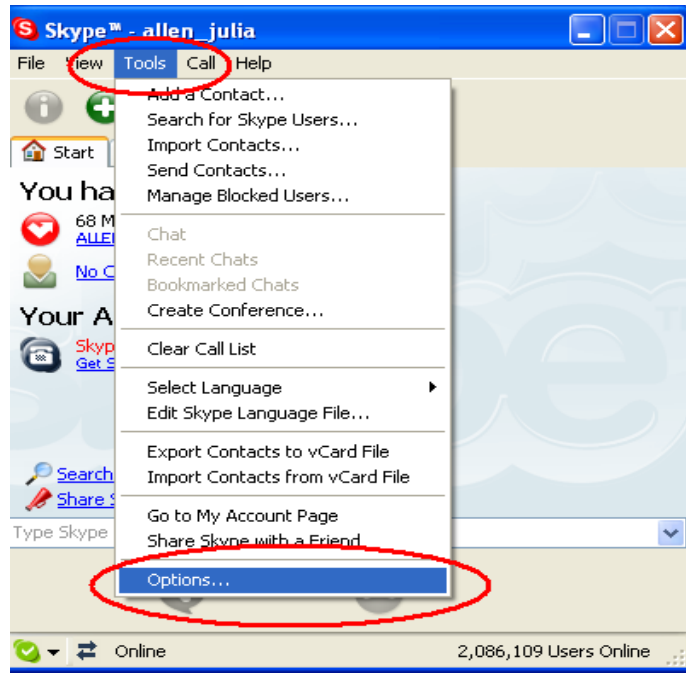


Figure 4.1

STEP 3: Verify the audio is setup for Windows default value. (Figure 4.2)

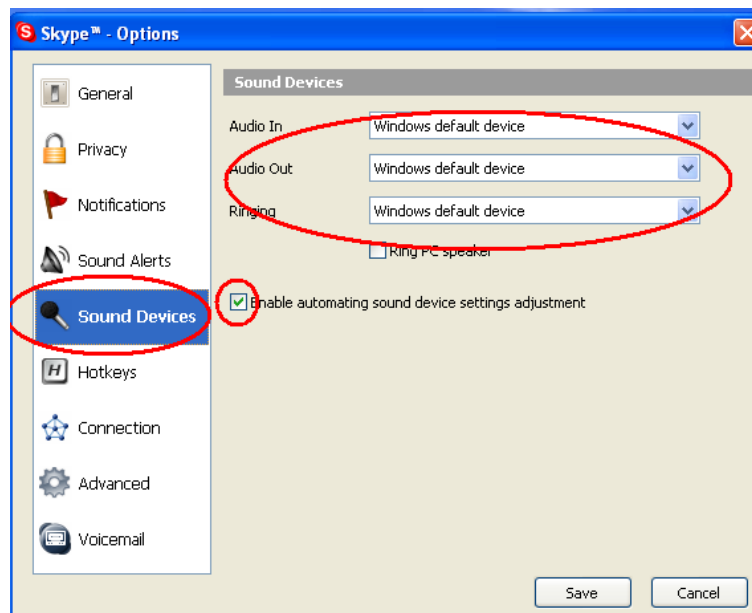


Figure 4.2

STEP 4: Select “HotKeys” option in Keyboard item. Please specify the required setup as indicated in Figure 4.3 (circled in red).

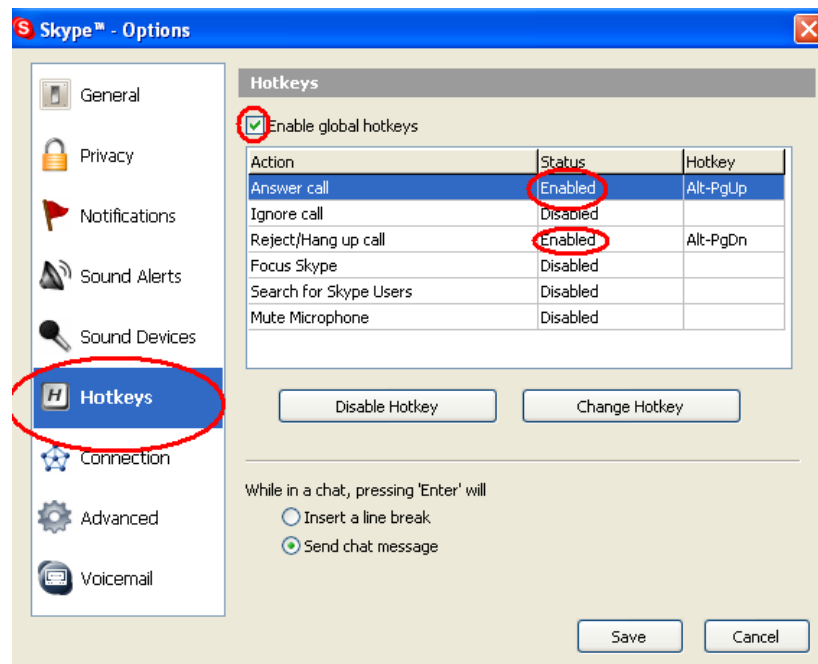


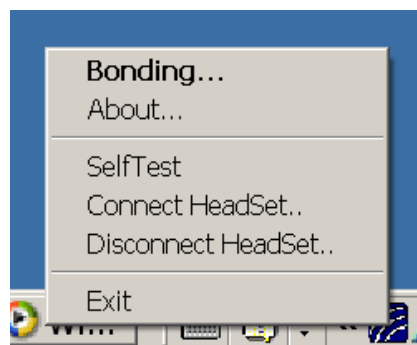
Figure 4.3

Hardware Installation

STEP 1: Plug-in the SKYPE dongle.

STEP 2: Verify that the Bluetooth headset is in pairing mode
(Please refer to the headset manual about its operation sequence.)

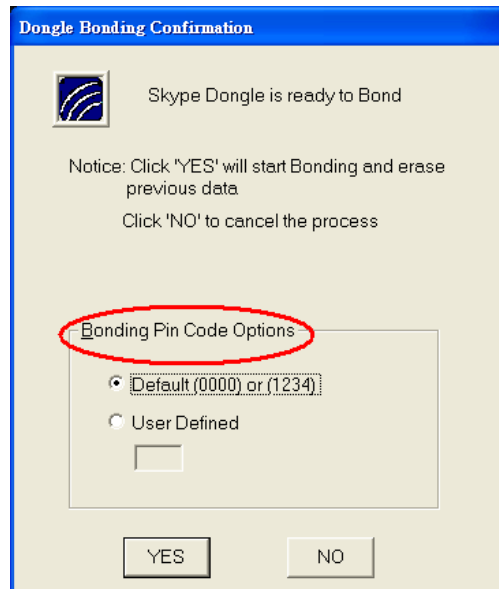
STEP 3: Trigger Bonding. Move cursor over the Aliteam logo icon then right click the mouse button and select Bonding item.



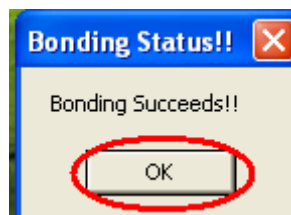
STEP 4: There are two options for “Bonding Pin Code”

1. Default -> for a headset whose pin code is either 0000 or 1234.
2. User Defined -> user can input any pin code used in the headset.
3. Click YES button to start Bonding Process.

(The logo will be changed to an animated icon during the bonding process.)



STEP 5: After a few seconds, the Bonding status message will pop up.



STEP 6: If Bonding succeeds, click OK button and start using Bluetooth headset with SKYPE. If not, please make sure headset's battery is fully charged and put it into pairing mode before triggering Bonding again.

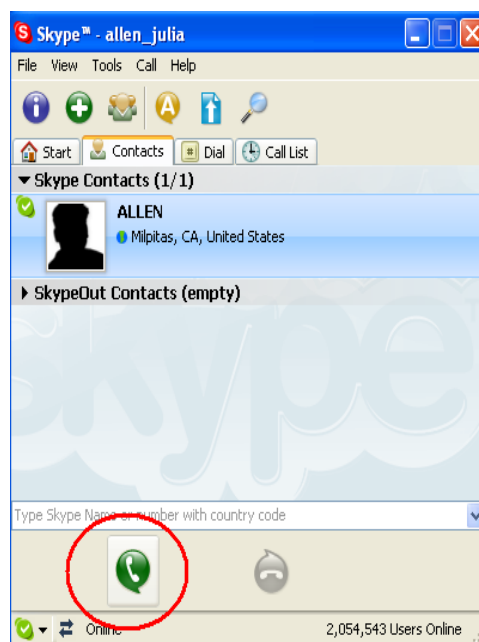
STEP 7: Installation is done. Congratulations!

Responding SKYPE Calls

● **Answering the Incoming Call**

While hearing in-band ring tone from the paired headset, there are 2 ways to answer the incoming call.

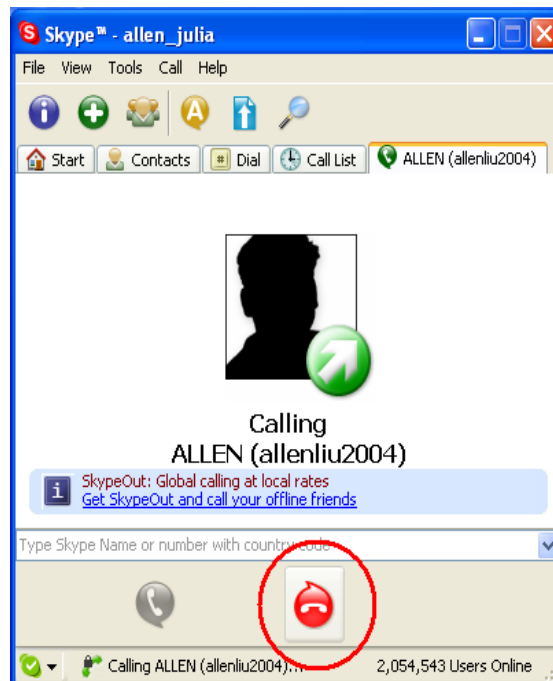
1. Press the Bluetooth headset multi-function button (please refer to Bluetooth headset user manual) or
2. Click the “Answer” button in the SKYPE user interface.
3. When you are using SKYPE service, the status LED indicator on headset will flash slowly.



● **Ending Up the Call**

There are 2 ways to hang up the phone call.

1. Press the Bluetooth headset multi-function button (please refer to Bluetooth headset user manual) or
2. Click the “hang up” button in the SKYPE user interface.



FAQ

Bluetooth Headset

1. Q : How do I know that the battery of the headset has insufficient power?

A : The battery power is almost exhausted when one or more following scenarios happen:

- (1) The headset starts to reset automatically.
- (2) You can constantly hear breaks on the audio link, or
- (3) You cannot connect the headset to the transmitter after several tries.

Please charge the battery to avoid these problems above.

2. Q : Why cannot I create a connection to the headset?

A :

- (1) Verify that the battery power of headset is not running low.
- (2) Check if the headset is powered on and the Status LED indicator is flash quickly.
- (3) Verify that the headset is within the specified range of 10 meters from the audio source.

- (4) Check if any other Bluetooth device has connected to the headset. If the headset is connected with other devices, the status LED indicator on the headset is flashing slowly.
- (5) Turn both the headset and the TX device off. Power on the headset, power on the TX and try to connect again.

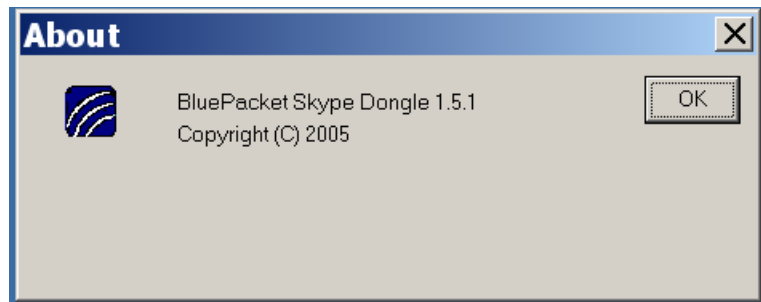
3. Q : Why do I hear beep from the headset in several seconds?

A: The beep means the headset is in the low power status. The headset will beep every 20 seconds to remind you to charge it. Meanwhile, the power LED indicator is flashing.

AV/ Skype Dongle

1.Q: How to check the application Version

A: Right click the BluePacket logo icon, select the “About” item and a window will pop up as below:



2.Q: How to launch the application?

A: Start->Programs->BluePacket->SkypeDongle->Launch SkypeDongle.exe



3.Q: How to exit the application?

A: Right click the BluePacket logo icon and select the “Exit” item

4.Q: How to uninstall the application?

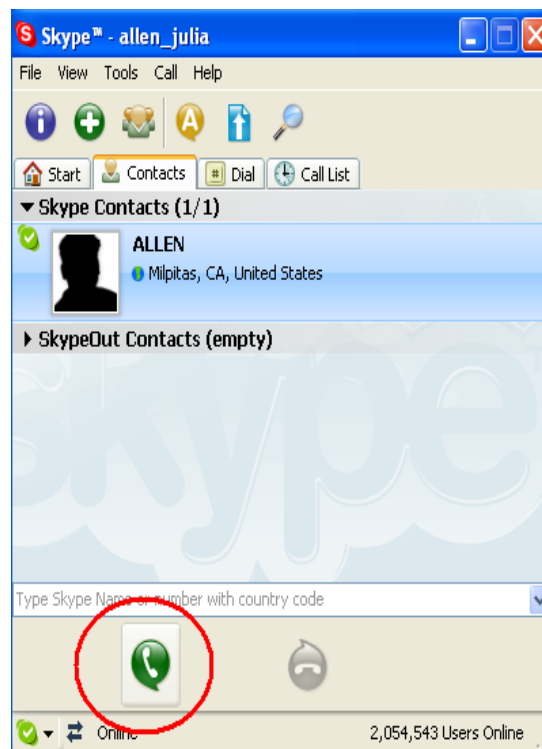
A: Start-> Programs -> BluePacket -> SKYPE Dongle -> Uninstall SkypeDongle



5.Q: How to answer the incoming call?

A: While hearing in-band ring tone from the (paired) headset, there are 2 ways to answer an incoming call:

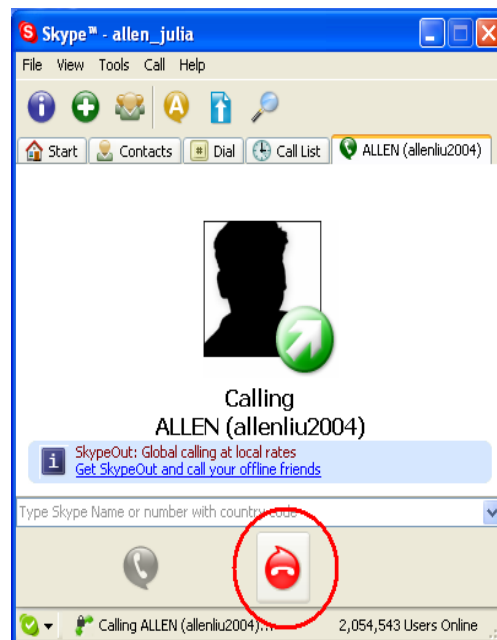
- (1) Push the Bluetooth headset multi-function button (please refer to Bluetooth headset user manual) or
- (2) Click the “Answer” button in the SKYPE user interface.



6. Q: How to end a call?

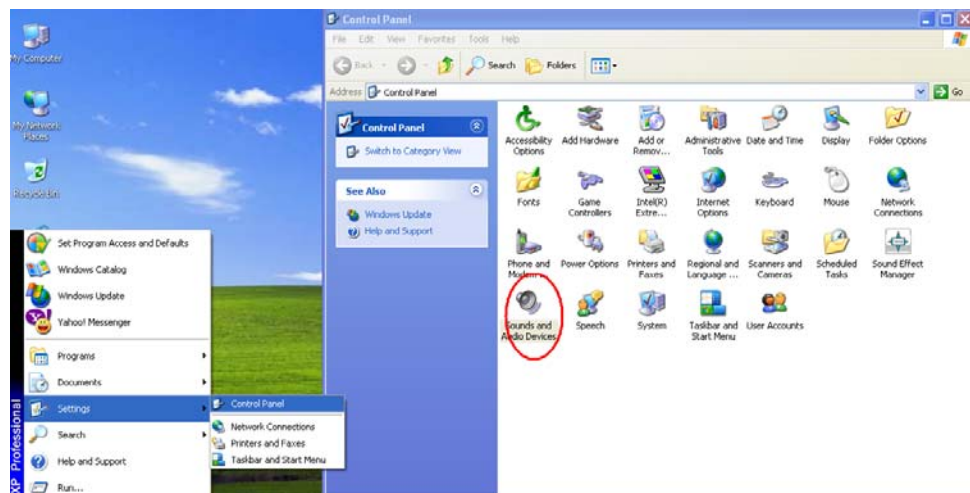
A: There are 2 ways to hang up the phone call.

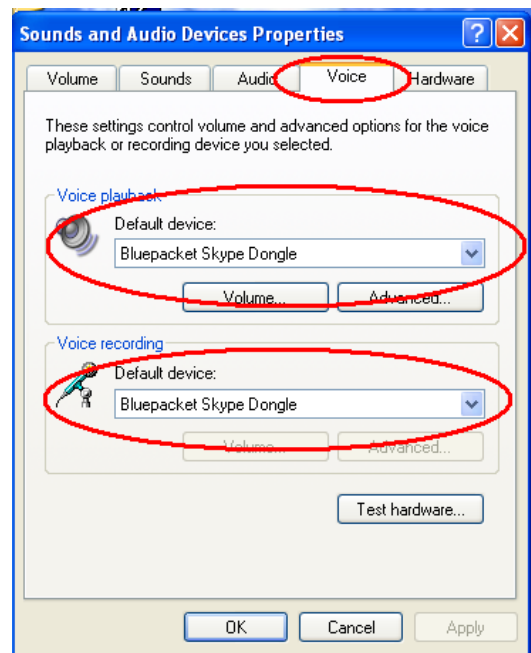
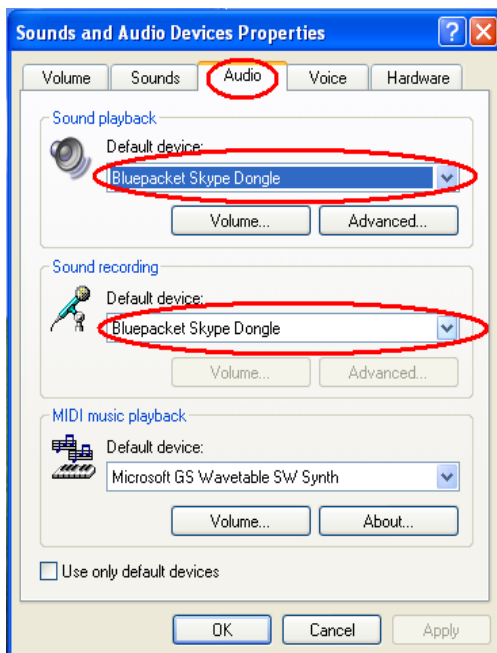
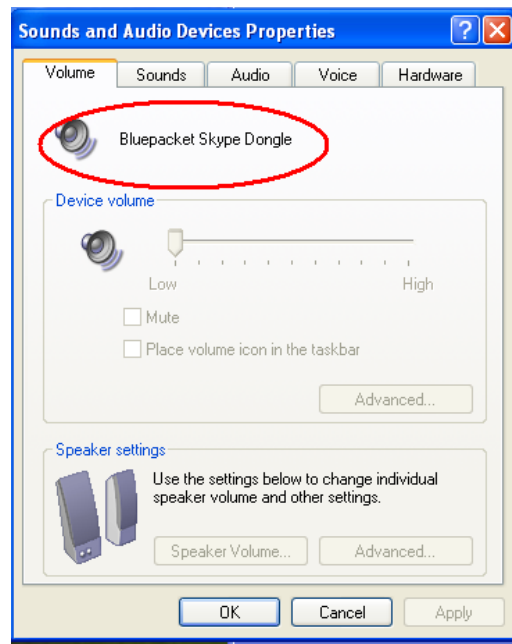
- (1) Push the Bluetooth headset multi-function button (please refer to Bluetooth headset user manual) or
- (2) Click the “hang up” button in the SKYPE user interface.



7. Q: How to verify a user is using SKYPE dongle for SKYPE now?

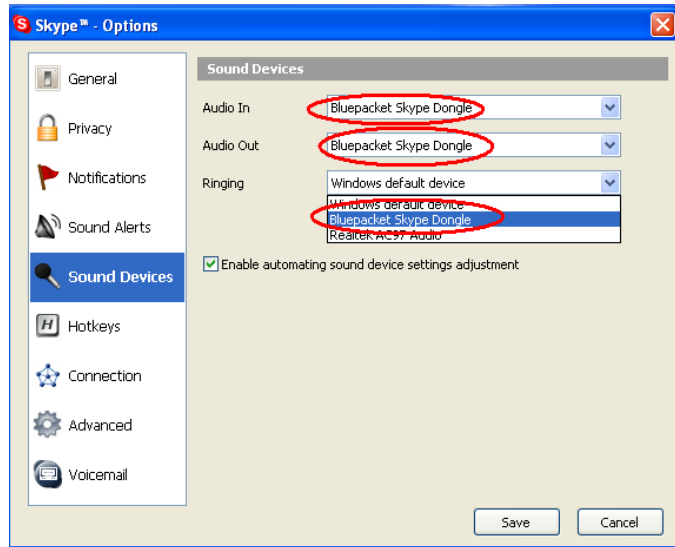
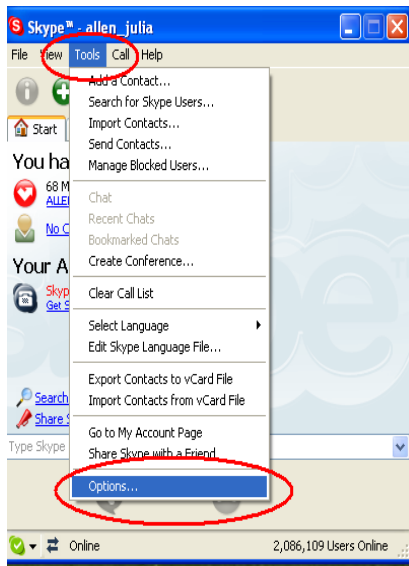
- (1) Click "Start ->Setting-> Control Panel and double click "Sounds and Audio Devices"
- (2) Check if "BluePacket SKYPE Dongle" is detected
- (3) Correct "Audio" setting
- (4) Correct "Voice" setting





8.Q: How to force SKYPE application using SKYPE Dongle?

- (1) Select Tools->Options in SKYPE menu.
- (2) Select "BluePacket SKYPE Dongle" for 'Audio In' and "Audio Out".



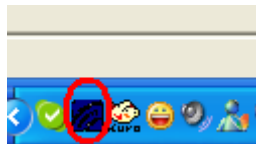
9.Q: How do I know the system is in Bonding Process and how do I know the action is finished?

User can check the logo in tool bar

(1) Bonding is in progress.



(2) Bonding is finished. Note that a status window will pop up as well.



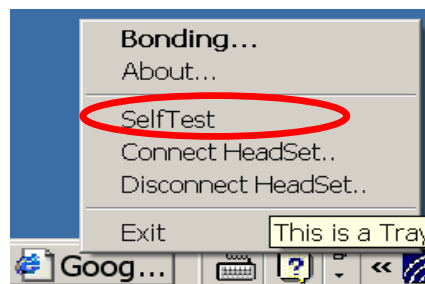
10.Q: How can I tell the SKYPE dongle is ready after bonding has been done?

There are 2 ways to do it:

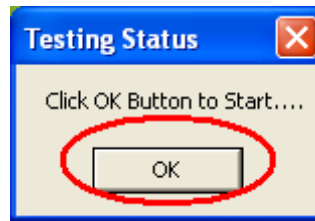
BluePacket has the self test function to verify it.

(1) Right click the BluePacket Logo.

(2) Select the "Self Test" item.

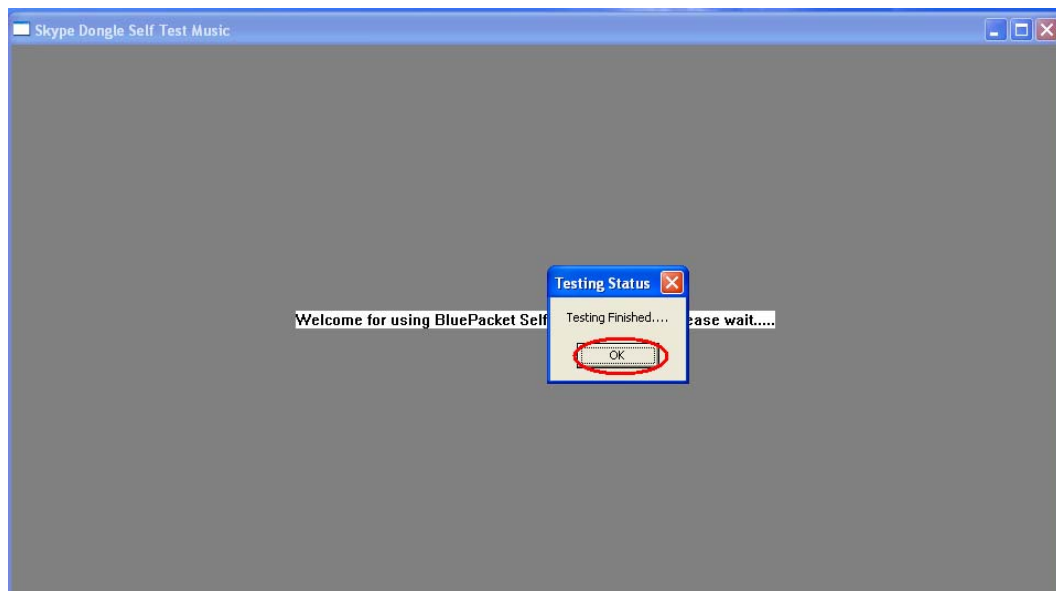
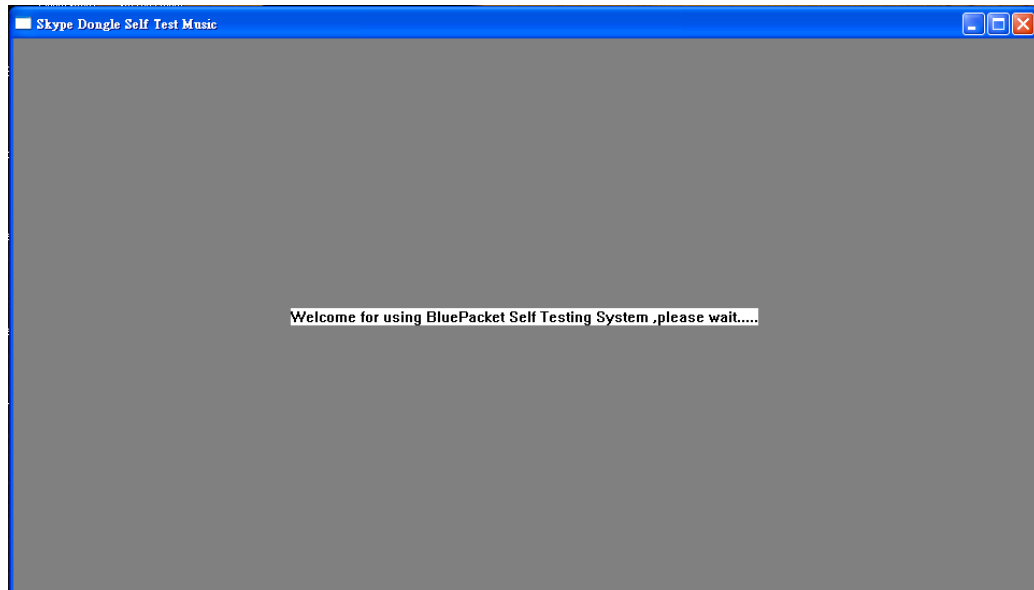


(3) Click OK to start the selftest function.



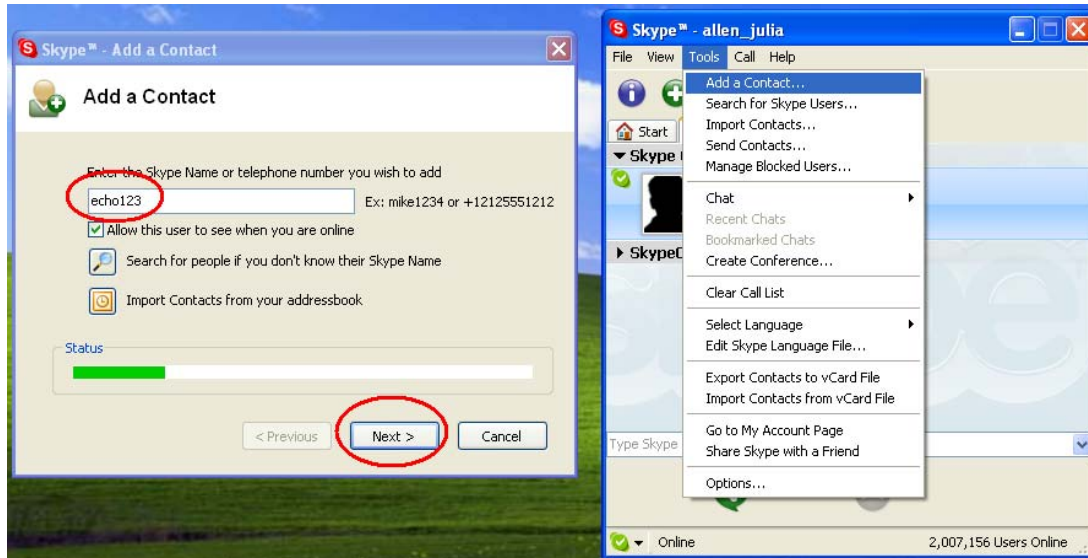
(4) It will pop up a Testing in progress windows.

(5) A dialog box showing "Testing Finished" will pop up when testing is done.

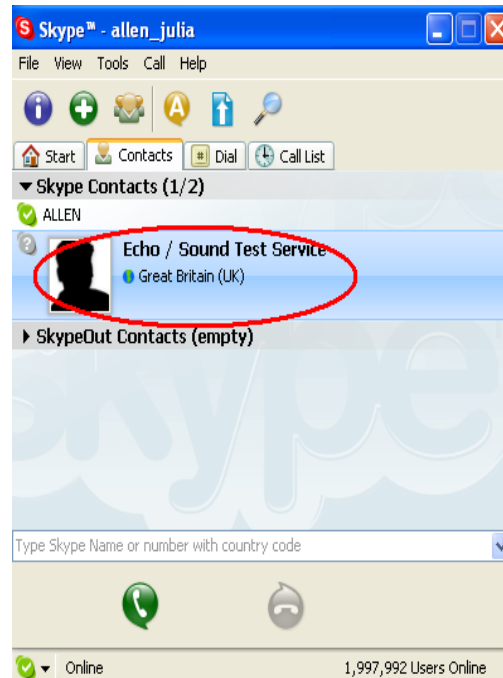


Another way is to do a self echo testing to verify:

- (1) Add new contact.
- (2) Type in "echo123".
- (3) Click "Next" -> "Finished".



- (4) Testing service will show up in SKYPE contact list.

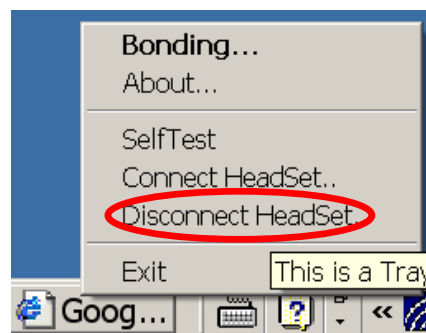
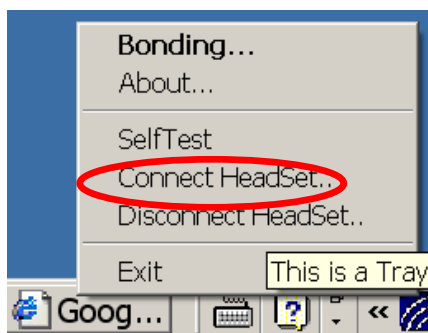


- (5) Call the echo service and follow the operator instructions.

11.Q: How can I use IP phone client provided by MSN or Yahoo Messenger?

A: Right click the SKYPE Dongle logo-> select "Connect HeadSet". You can disconnect by "Disconnect HeadSet" option.

Before the conversation begins, you need to select "Connect Headset" item (see below) to establish the Bluetooth connection. Similarly, you can select "Disconnect Headset" after the conversation is finished.



12.Q: Why can't I pair my Bluetooth headset to the dongle when it is in SKYPE mode?

A: Please check the pin code in your Bluetooth headset device. The SKYPE dongle now only accepts 2 pin codes. The pin code should be 0000 or 1234.

13.Q: The "Bonding Success" message is shown but how come I can not use my Bluetooth headset?

A: Please verify your headset power is on.

14. Q: I can not pair SKYPE dongle with my headset after several tries, what should I do?

A: (1) Exit SKYPE Dongle program.
(2) Unplug the dongle, plug it in; then try again.

15. Q : How can I change the modes?

A: You can change AV mode to SKYPE Mode by the slide switch, and vice versa. Dual mode dongle may probably malfunction when you "hot swap". If you want to make a switch, please pull out the dual mode dongle and plug it in the USB port

again to make sure the successful switch.

Specification – Bluetooth Stereo Headset

Product Name	Aliteam Bluetooth Headset
Standard	Bluetooth 1.2 compliant
Power Class	Class 2
Frequency Band	2.402~2.480 GHZ unlicensed ISM band
Profile Supported	AV, Headset and Hands Free Profiles
Audio Format	SBC
Memory	8M flash external memory
Rx Sensitivity	< 0.1% BER at -86 dBm
RF Output Power	-6dBm to 4 dBm
Sampling Rate	48 KHz
Antenna	embedded antenna
Working Distance	up to 10 meters (in open space) <i>Note: The maximum operating range depends on the paired phone model, battery power, and environmental factors.</i>
Power Consumption	Music Streaming: 75 mA (Typical),
Power Supply	500mA Lithium Ion Battery
Operating Temperature	-10 °C ~ +55 °C

Specification – Bluetooth AV / SKYPE Dongle

Product Name	Aliteam Bluetooth SKYPE Dongle	
Standard	Bluetooth 1.2 compliant	
Power Class	Class 2	
Interface	USB 1.1 or 2.0	
Bluetooth Profile	AV Mode	A2DP Profile
	SKYPE Mode	Headset Gateway Profile
Output Power	-6dBm to 4 dBm	
Working Distance	Up to 10 meters (in open space) <i>Note: The maximum operating range depends on the paired phone model, battery power, and environmental factors.</i>	
Frequency Band	2.400~2.4835GHz Unlicensed ISM Band	
Modulation	GFSK (Gaussian Frequency Shift Keying)	
Spectrum	FHSS (Frequency Hopping Spread Spectrum)	
Operating Voltage	Powered by USB port directly	
Operating Temperature	-10 °C ~ +55 °C	

Technical Support

If you have further questions, please contact our Technical Support Department. Thank you!

Appendix A– Supported Cell Phone List

Supported Cell Phones by Aliteam Stereo Headset

Brand	Nokia	Moto	Sony Ericsson	Siemens	Panasonic
Model	3650	V600	T610*	U15	X70
	3660	V500	T630		
	6230	V525	T68i		
	6820	V80	Z600		
	7610	A630	K700i*		
		V620	P900		
		E398	S700		
		E550			
		V535			
		V545			
		V550			
		V600i			
		V710 CDMA			
		A768i			
		A768			
		V3			

*Cell phone with a “ * ” mark can not be fully supported.

*This list is subjected to update.

Appendix B – Supported Headset List (SKYPE Mode)

Brand	Type
Logitech	1.2 Mobile Freedom
Plantronics	M3000
Motorola	HS810 / HS850 / HT820 (Stereo HS)
Air2U	BSH02A (OEM)
Sony Ericsson	HBH-662
Nokia	HDW-3
J3	BA-2011-J (OEM)
	Hello 2
iTech	Clip S35 / BlueBand (Stereo HS)

** Aliteam Quality Assurance team completed the Skype test cases for those headsets. According to the result, Skype Dongle can support most of Bluetooth Standard 1.2 headsets. The compatibility test includes but not limit to the list. It is subjected to update while more headsets are available for testing.