

October 21, 2014

Federal Communications Commission  
Authorization and Evaluation Division  
7435 Oakland Mills Road  
Columbia, Maryland 21046

To whom it may concern,

This letter describes the compliance of master device FCC ID: UA9800 to the 594280 D01 Configuration Control v02r01 and 594280 D02 U-NII Device Security v01r01 documents referred in KDB 594280.

Software updates are provided to third party ODM/OEM partners and they may distribute them to end-user or installer customers. These updates are in 128 bit encrypted binary machine code and are extremely difficult to disassemble for unauthorized modification. If the decoding of the encrypted code fails to decipher the binary machine code will not load and run on the radio device.

Radio parameters can only be modified by third party ODM/OEM partners through the mechanism of country codes. No radio parameter can be modified directly and cause a violation of certification. No end-user or installer can modify these country codes.

The software distribution is worldwide and does not differ on a country by country basis. The country code portion of the software is not part of the software update distribution, and so software updates are not able to modify the country code.

Before the country code documentation, visibility, and control method are available to the third party ODM/OEM the ODM/OEM must sign the included Attestation Letter. This letter dictates the responsibility of ODM/OEM to control the country code and what actions they must do to stay within compliance. This prevents improper loading of non-US parameters in to the radio device.

Master software cannot load on a client and client software cannot load on a master. Summit Semiconductor UA9800 is a master only device and cannot be configured as a client. Summit Semiconductor UA9601 is a client only device and cannot be configured as a master. No other modes; ad hoc, bridge, or mesh are permitted in either radio device.

When the device is re-started the default radio parameters are assigned identical to normal use radio parameters.

Best Regards,



Kenneth A. Boehlke  
Principal Engineer  
Summit Semiconductor  
[kboehlke@summitsemi.com](mailto:kboehlke@summitsemi.com)

October 21, 2014

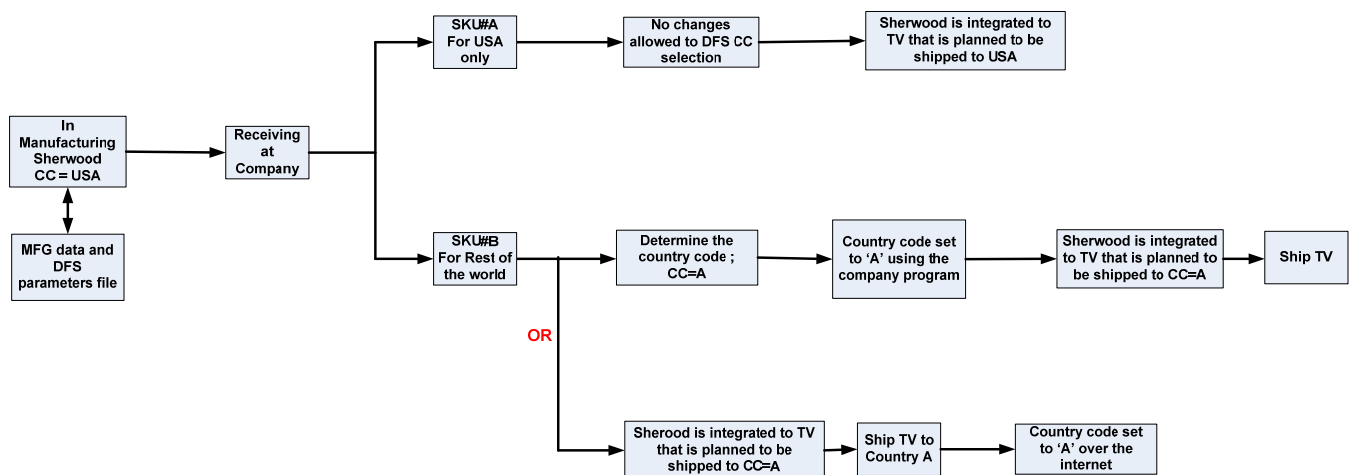
COMPANY NAME

COMPANY ADDRESS

Dear COMPANY REPRESENTATIVE

The Federal Communications Commission (FCC) recently requested Summit Semiconductor, LLC. (Summit) to demonstrate compliance with the software configuration control and country code requirements specified in KDB 594280. Summit responded to this request by submitting a letter to the FCC stating the step by step procedure that Summit will follow to comply with the requirements of KDB 594280. This letter was accepted by the FCC and it can be accessed at the FCC's website.

One of the FCC requirements is that COMPANY NAME signs an attestation statement ensuring that any wireless module programmed to a specific country will only be used in products shipped to that country. This is to prevent modules programmed for a different country being mistakenly shipped to USA. Hence, Summit is requesting COMPANY NAME to follow the diagrammatically represented procedure below to fulfill the requirement stated in KDB 594280. A brief explanation follows the blocks diagram.



The MFG data file and the DFS parameters file are loaded into the wireless module during Summit's manufacturing process, and the country code in the MFG data file is by default set to USA. The modules are shipped to COMPANY NAME's receiving department, at which time COMPANY NAME assigns a SKU number. Units that are designated to be shipped to USA are assigned a unique SKU number and units to be shipped to the rest of the world are assigned a different SKU number.

Once the units are assigned a SKU number for USA, the MFG data file and DFS parameters file cannot be changed. For rest of the world, COMPANY NAME can follow the procedure illustrated in the block diagram above.

By signing below COMPANY NAME agrees to Summit's process illustrated above, which is necessary to demonstrate compliance with the software configuration control and country code requirements as stated in KDB 594280.

Signature

---

COMPANY REPRESENTATIVE  
TITLE

COMPANY NAME  
COMPANY ADDRESS

Date:

---