



## PHOTOS - TEST SETUP

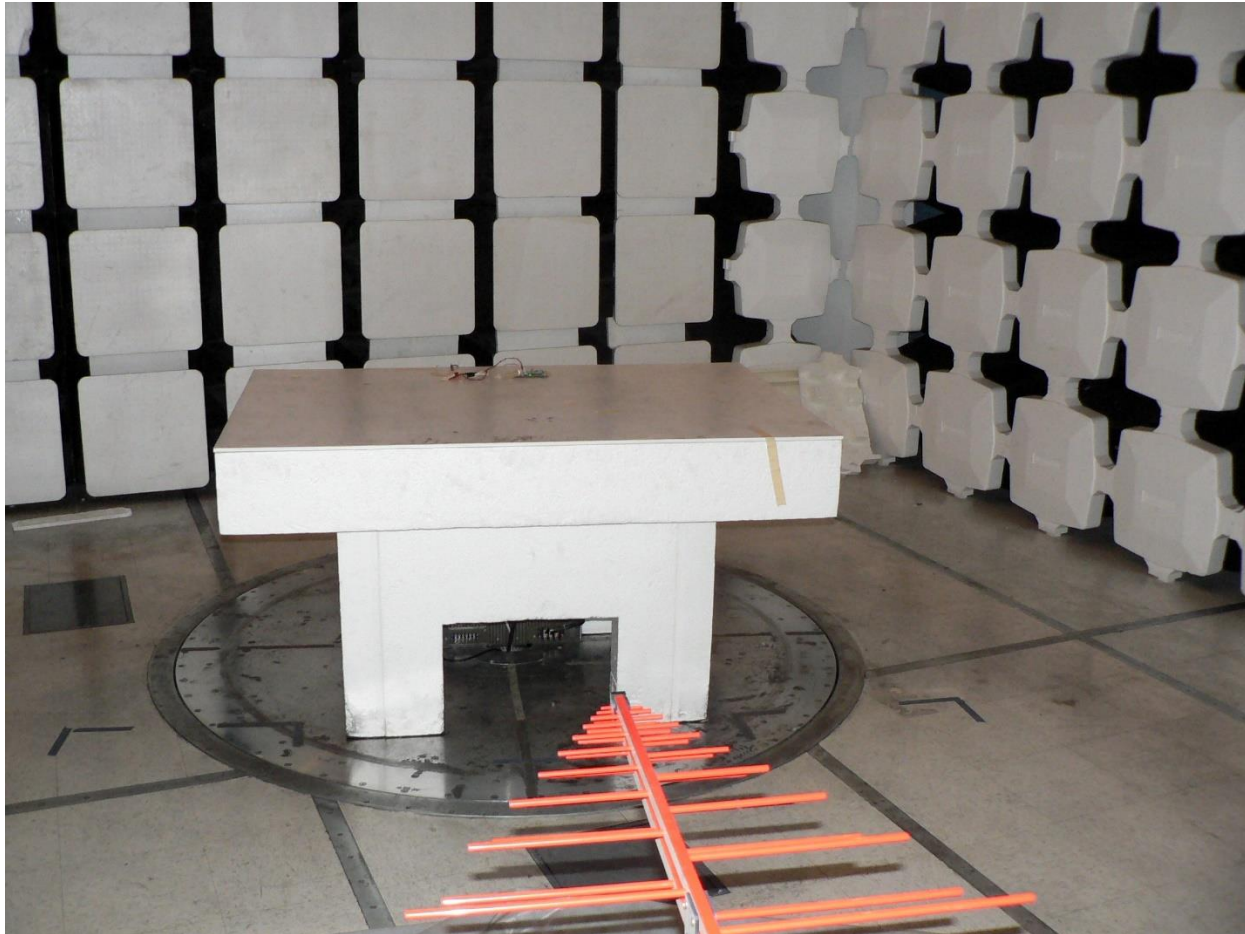
Company: Alereon, Inc.

Product Name: AL5835\_Camouflage256

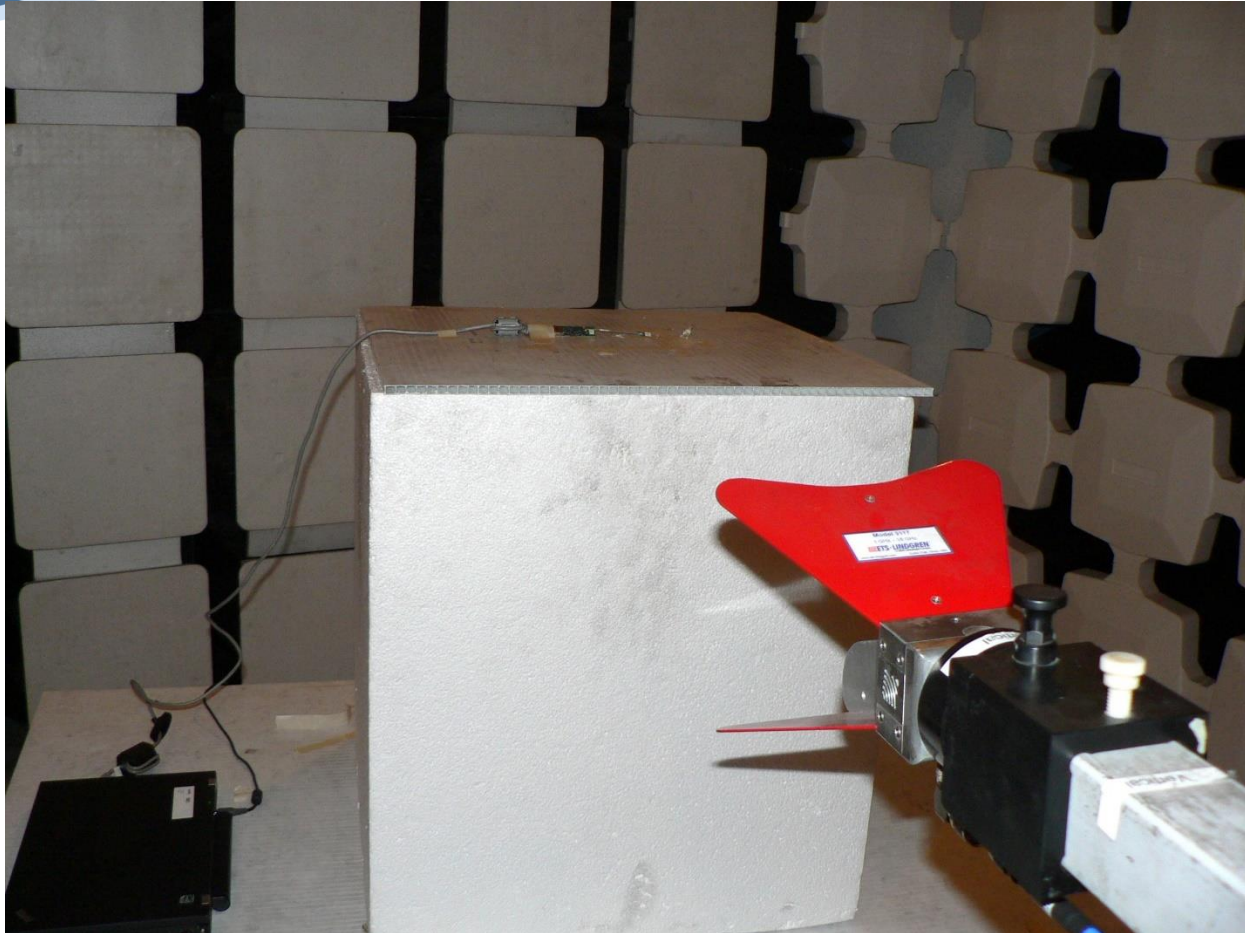
Report No.: ALER03 – Test Setup Photos

## 1. Test Setup Photographs

### 1.1.1. Test Setup - RE#1 - Radiated Emissions - 3m Chamber

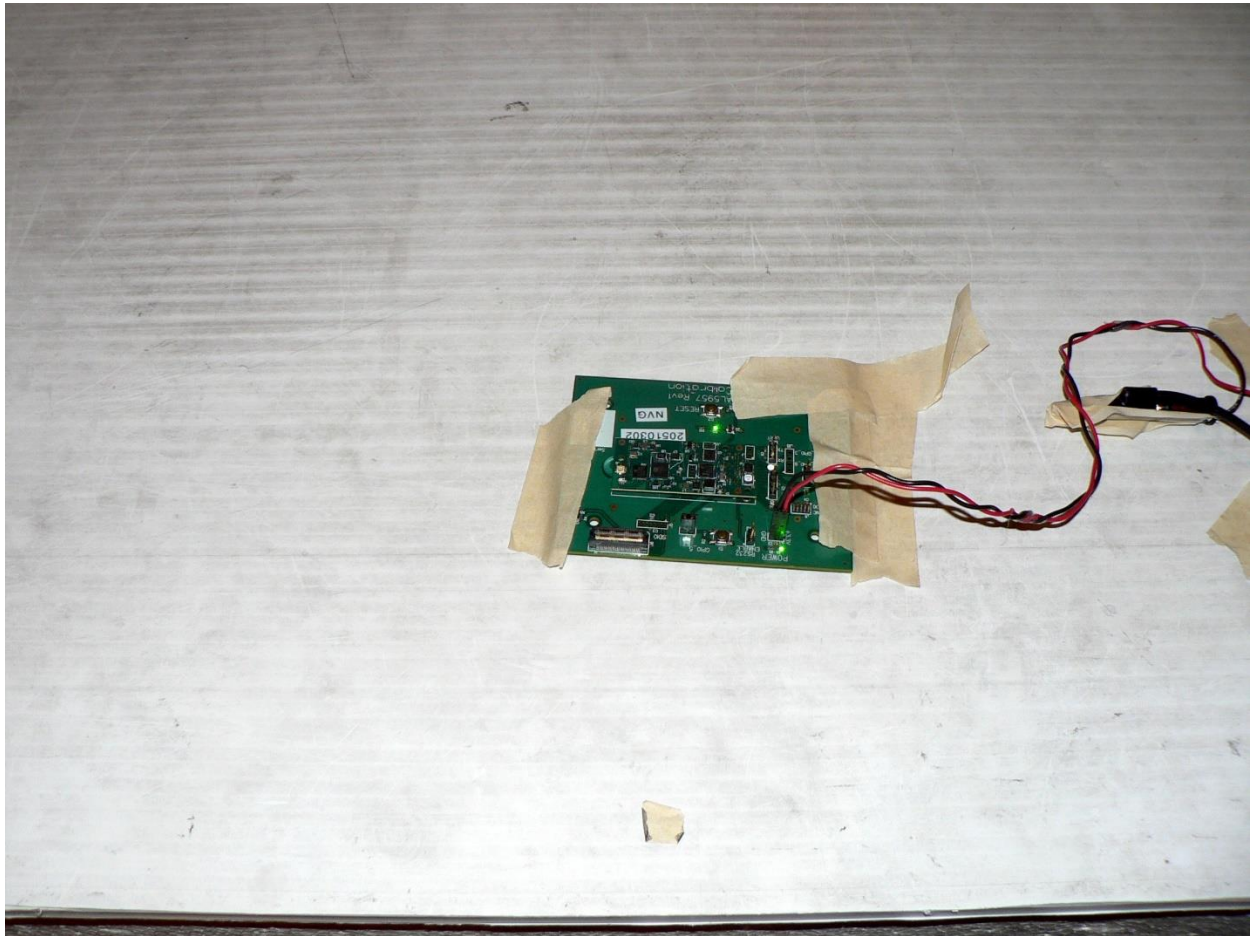


AL5835\_Camouflage256 Digital Emissions 30-1000MHz



TX Spurious 1-18GHz

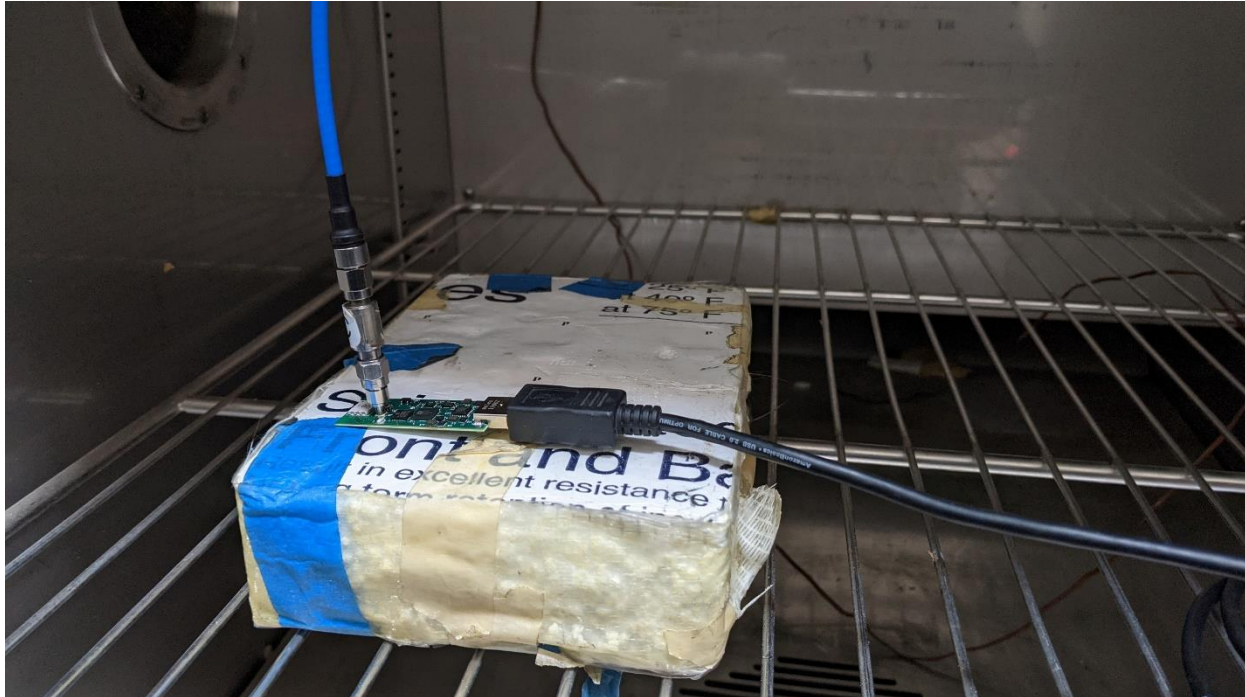
\*\*AL5834\_Combat256 was tested for TX spurious emissions 1-18GHz and data used for all 6 units as statement from client declared all 6 boards used the same Alereon radio chipset.



AL5835\_Camouflage256 Digital Emissions 30-1000MHz Closeup



**1.1.2. Test Setup - RF#1 - Conducted**



RF Conducted

\*\*AL5834\_Combat256 was tested for RF conducted and data used for all 6 units as statement from client declared all 6 boards uses the same Alereon radio chipset.



575 Boulder Court  
Pleasanton, California 94566, USA  
Tel: +1 (925) 462 0304  
Fax: +1 (925) 462 0306  
[www.micomlabs.com](http://www.micomlabs.com)