

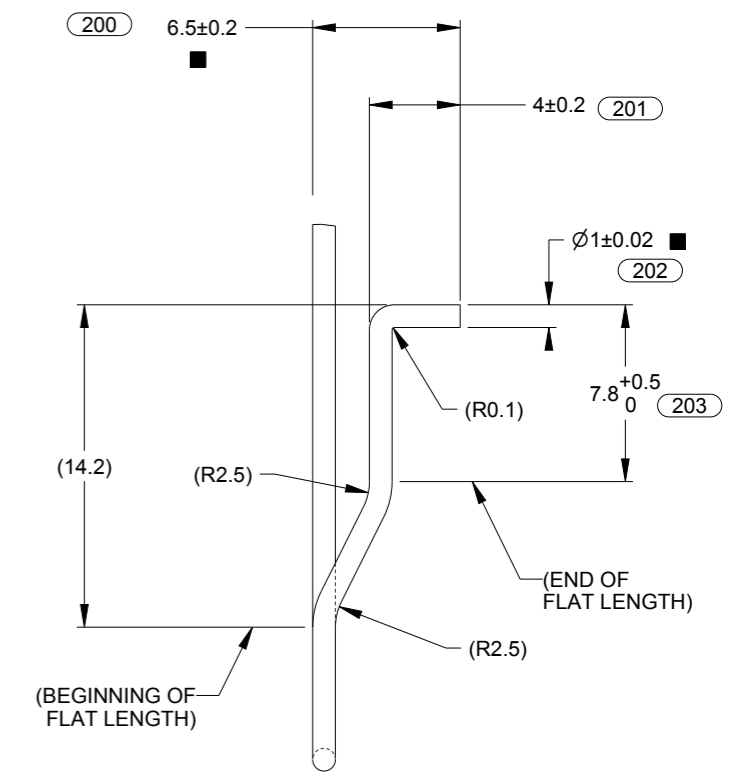
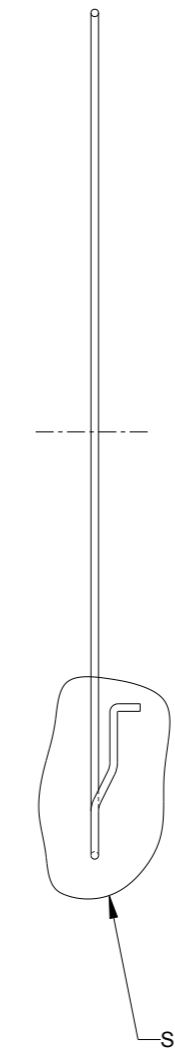
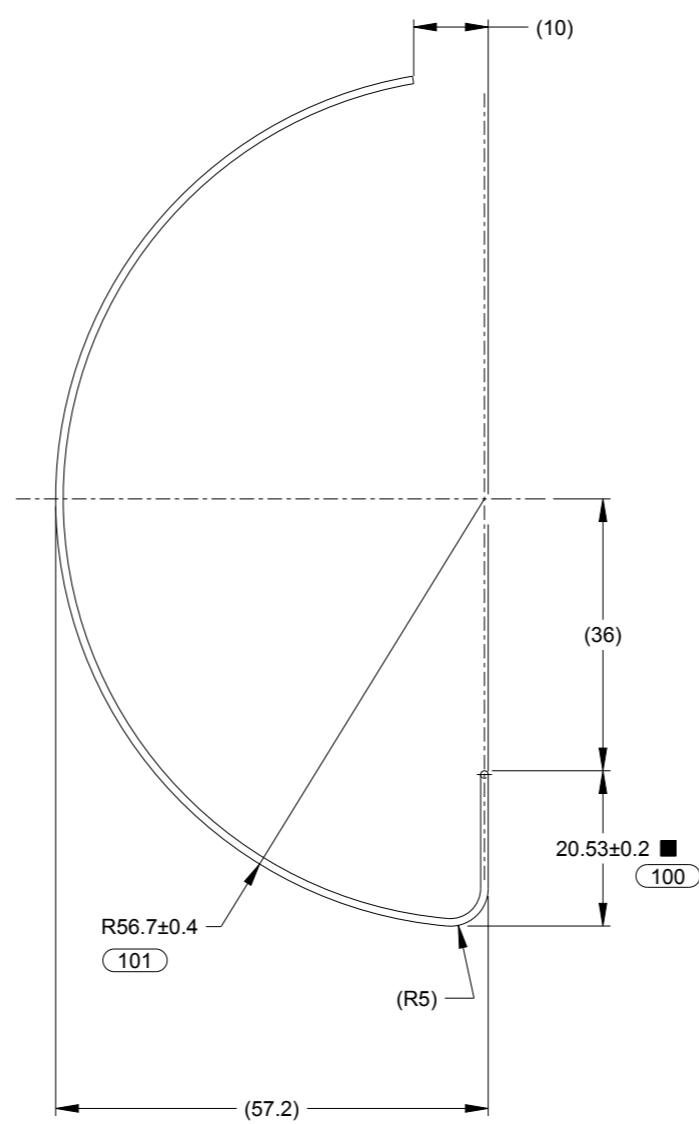
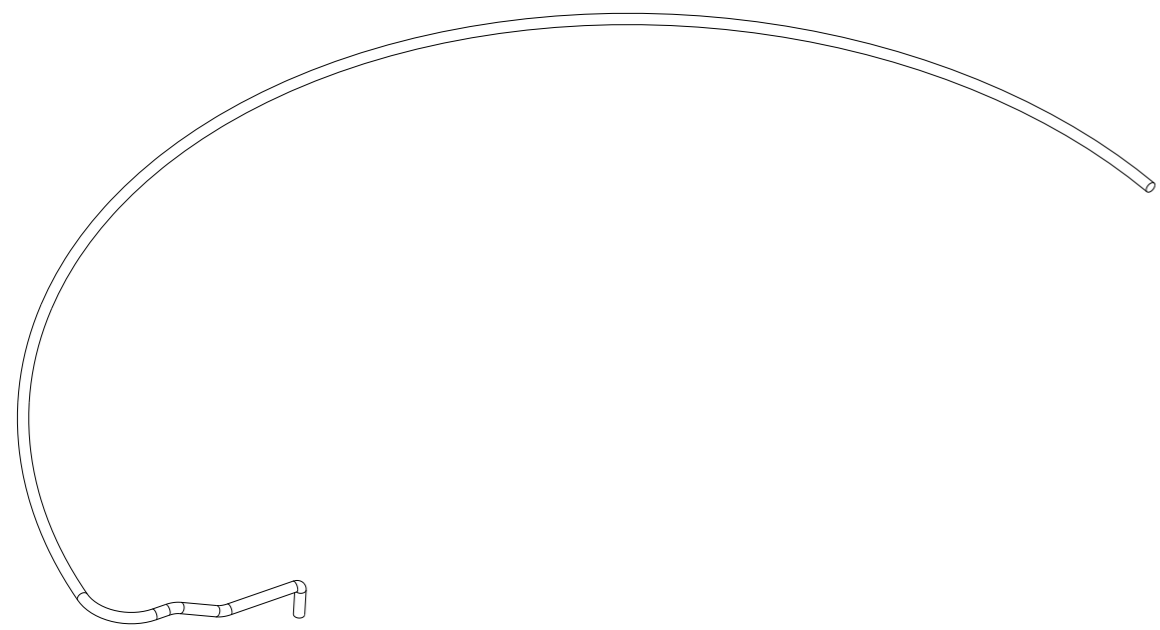
4

3

2

1

REVISIONS				
REV	ECO NO	DESCRIPTION	ENGINEER	DATE
1.4		INITIAL RELEASE FROM SUPPLIER		5/13/22
B		REDRAWN W/ DIM UPDATES	B. JACKSON	6/1/22
C		ADDED BALLOONS, UPDATED TOLERANCES	B. JACKSON	6/29/22
D	00258	RELEASED TO MASS PRODUCTION, ADDED WIRE LENGTH IN NOTES, UPDATED NOTE 5, CORRECTED TITLE BLOCK REVISION TO 'D' UPDATED DIM NUMBERS FOR R56.7 AND 20.53	B. JACKSON	9/29/22



DETAIL A
SCALE 3:1

DWG SYM LEGEND	
DIM NO	CRITICAL DIM
(001)	■

- NOTES:
- INSPECTION CRITERIA: ALL NON-REFERENCE DIMENSIONS REQUIRE A FIRST ARTICLE INSPECTION. A BLACK SQUARE ■ INDICATES A CRITICAL DIMENSION AND A CPK ANALYSIS IS REQUIRED PER THE SIMPLISAFE PRODUCTION PART APPROVAL PROCESS.
 - PARTS SHOULD BE CLEAN AND FREE FROM FOREIGN MATERIAL (E.G. DIRT, OIL, GREASE, ETC).
 - COSMETIC REQUIREMENT: REFER TO DOCUMENT QCD-00005-00.
 - THE ASSOCIATED CAD FILE DEFINES ALL PART GEOMETRY. DEFAULT TOLERANCES APPLY TO UNDIMENSIONED FEATURES.
 - THIS PART MUST BE ROHS AND REACH COMPLIANT PER THE SIMPLISAFE RESTRICTED CHEMICAL PROCEDURE RCP-10001-00.
 - MATERIAL: SPRING STEEL WIRE. JIS-G3521 GRADE SWRH-82A.
 - FINISH: NICKEL PLATING. MIN THICKNESS 4µm.
 - UNFORMED WIRE LENGTH: 188.5 ±0.25. UNFORMED WIRE SAMPLE REQUIRED FOR FIRST ARTICLE INSPECTION.
 - ALL RIGHT-ANGLE BENDS SHALL BE 90°±1°. NO CRACKS ALLOWED AT BENDS.
 - INTERPRET DRAWING PER ASME Y14.5-2018 UNLESS OTHERWISE SPECIFIED.

PROPRIETARY AND CONFIDENTIAL		UNLESS OTHERWISE SPECIFIED - DIMS ARE IN MM	
THE INFORMATION CONTAINED IN THIS DRAWING IS THE SOLE PROPERTY OF SIMPLISAFE. ANY REPRODUCTION IN PART OR AS A WHOLE WITHOUT THE WRITTEN PERMISSION OF SIMPLISAFE IS PROHIBITED.		TOLERANCES:	ANGLE TOLERANCES:
DRN	B. JACKSON	DATE	5/31/22
ENG	R. VERMA	DATE	5/31/22
		MATERIAL:	SEE NOTE 6
		TEXTURE:	N/A

TITLE:	ANTENNA, SMOKE/CO
PART NO:	ANT-10048-00
DWG NO:	ANT-10048-00

THIRD ANGLE PROJECTION

REV: D

Sheet 1 of 1

DWG SCALE: 1:1

DWG SIZE: A3



4

3

2

1