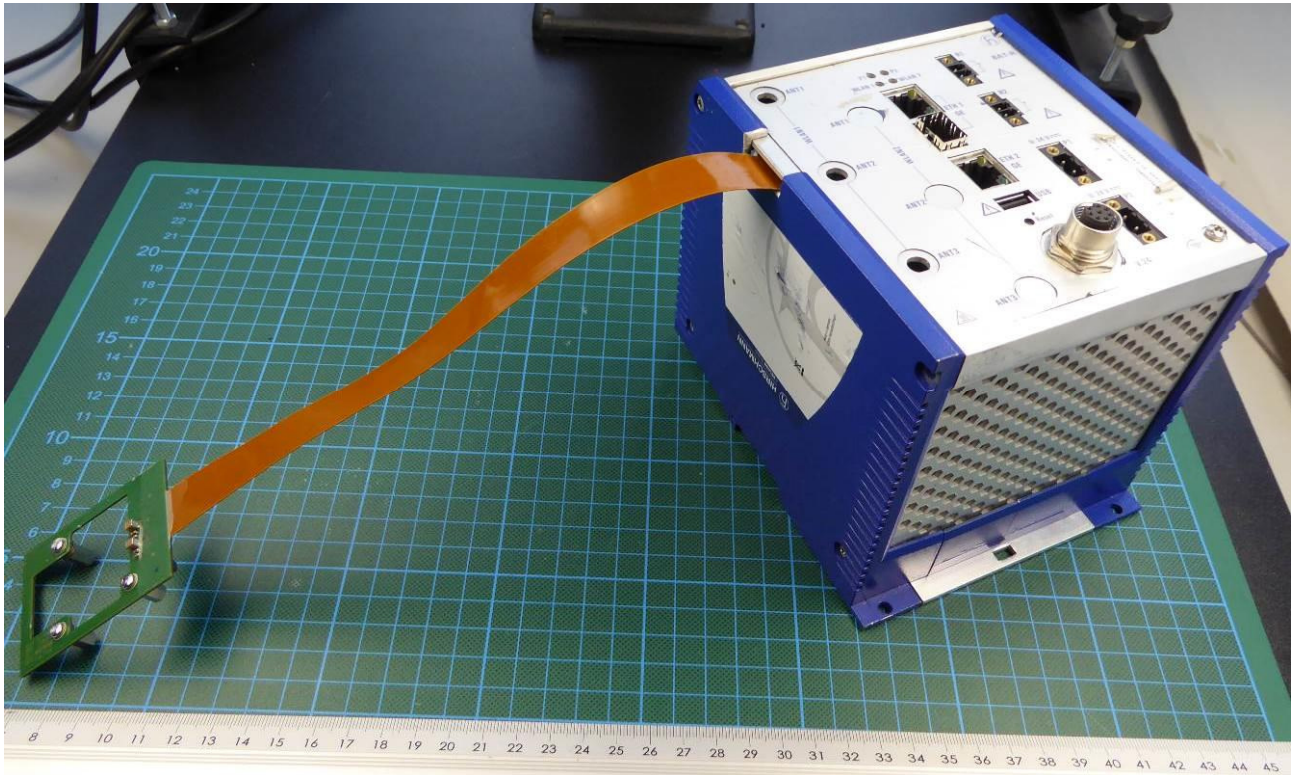
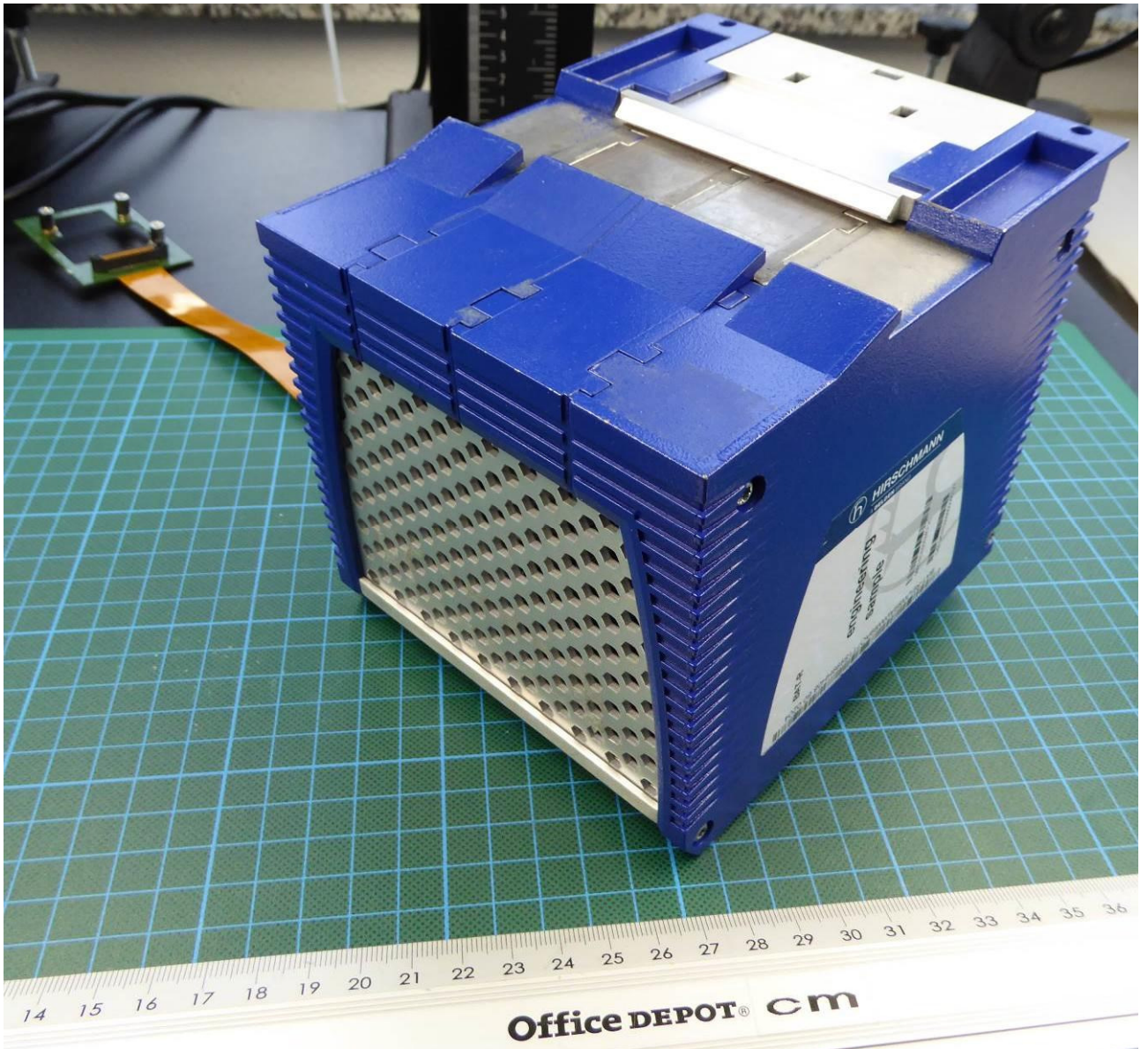


ANNEX B: EXTERNAL PHOTOGRAPHS



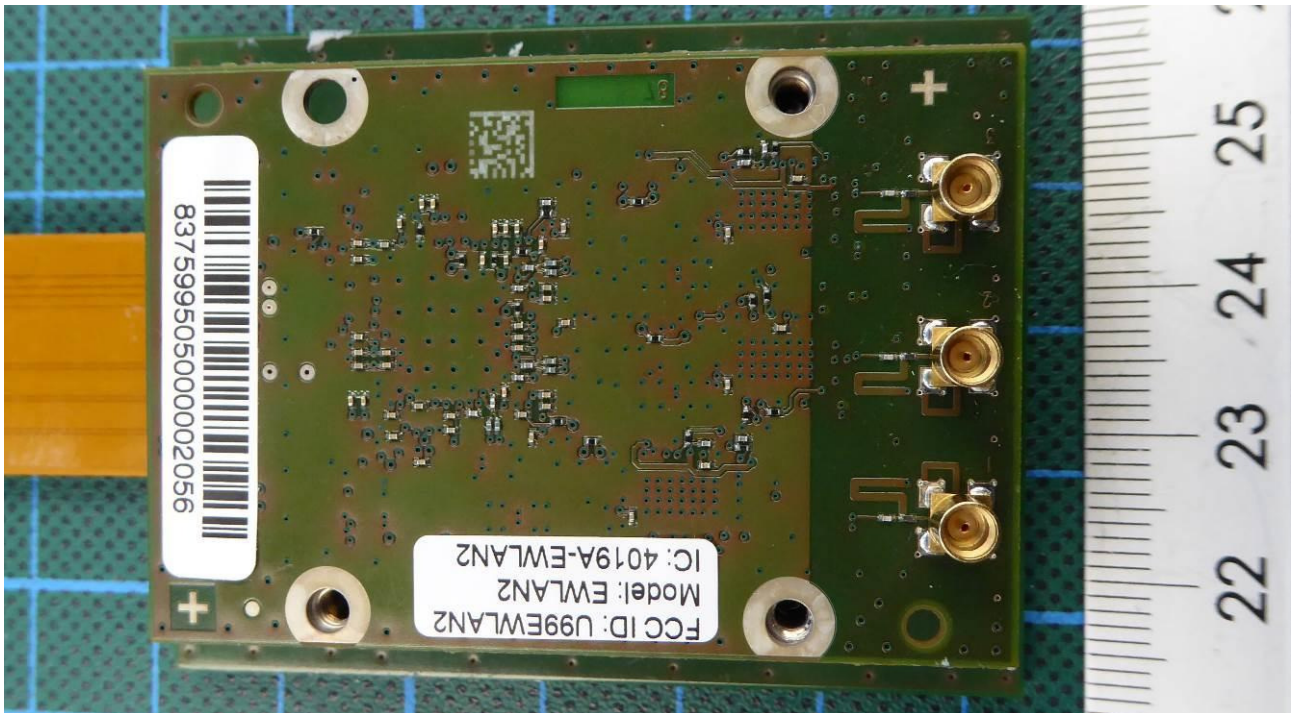
160308_10.jpg: BAT-R - 3D top view

ANNEX B: EXTERNAL PHOTOGRAPHS



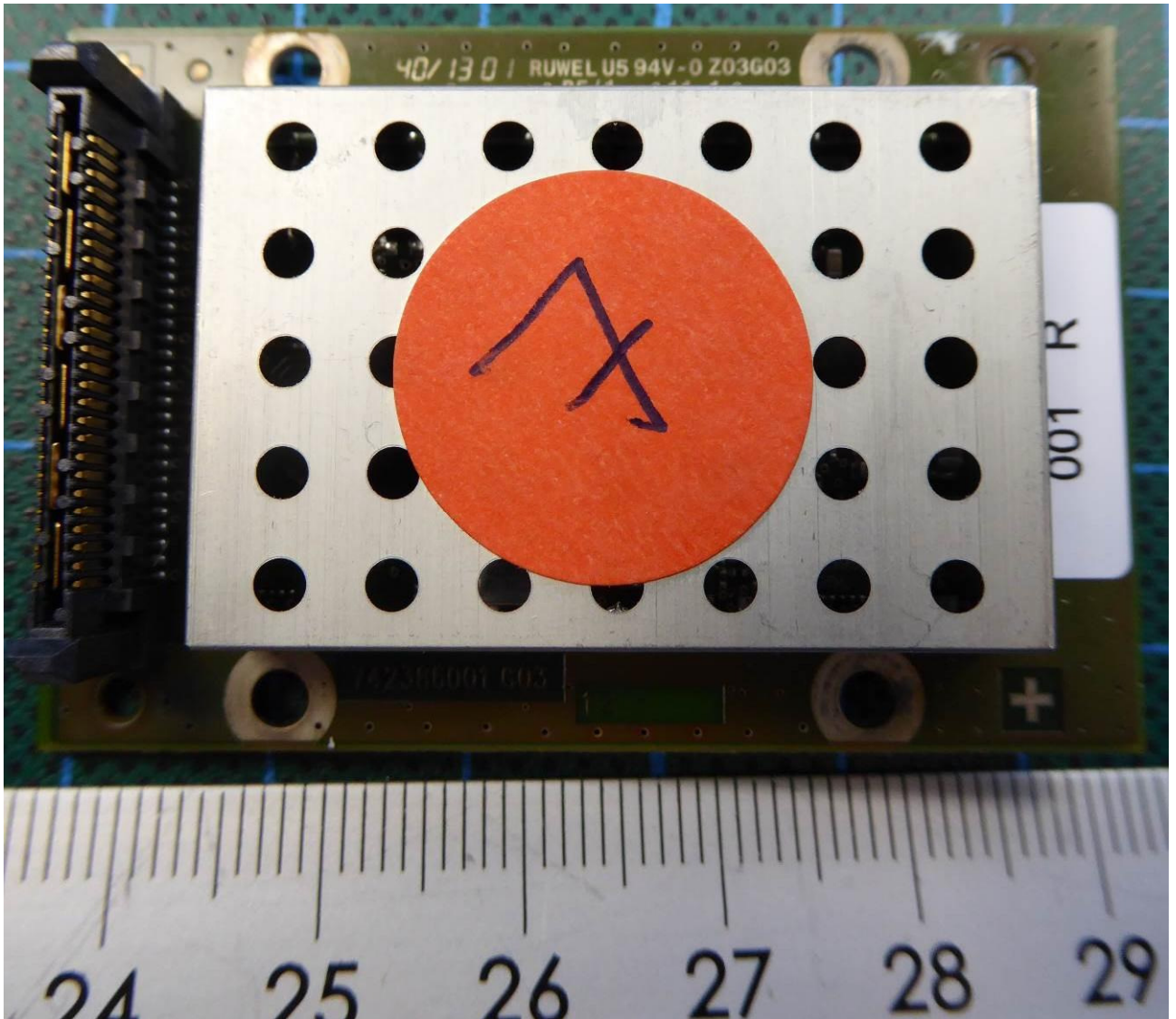
160308_11.jpg: BAT-R 3D bottom view

ANNEX B: EXTERNAL PHOTOGRAPHS



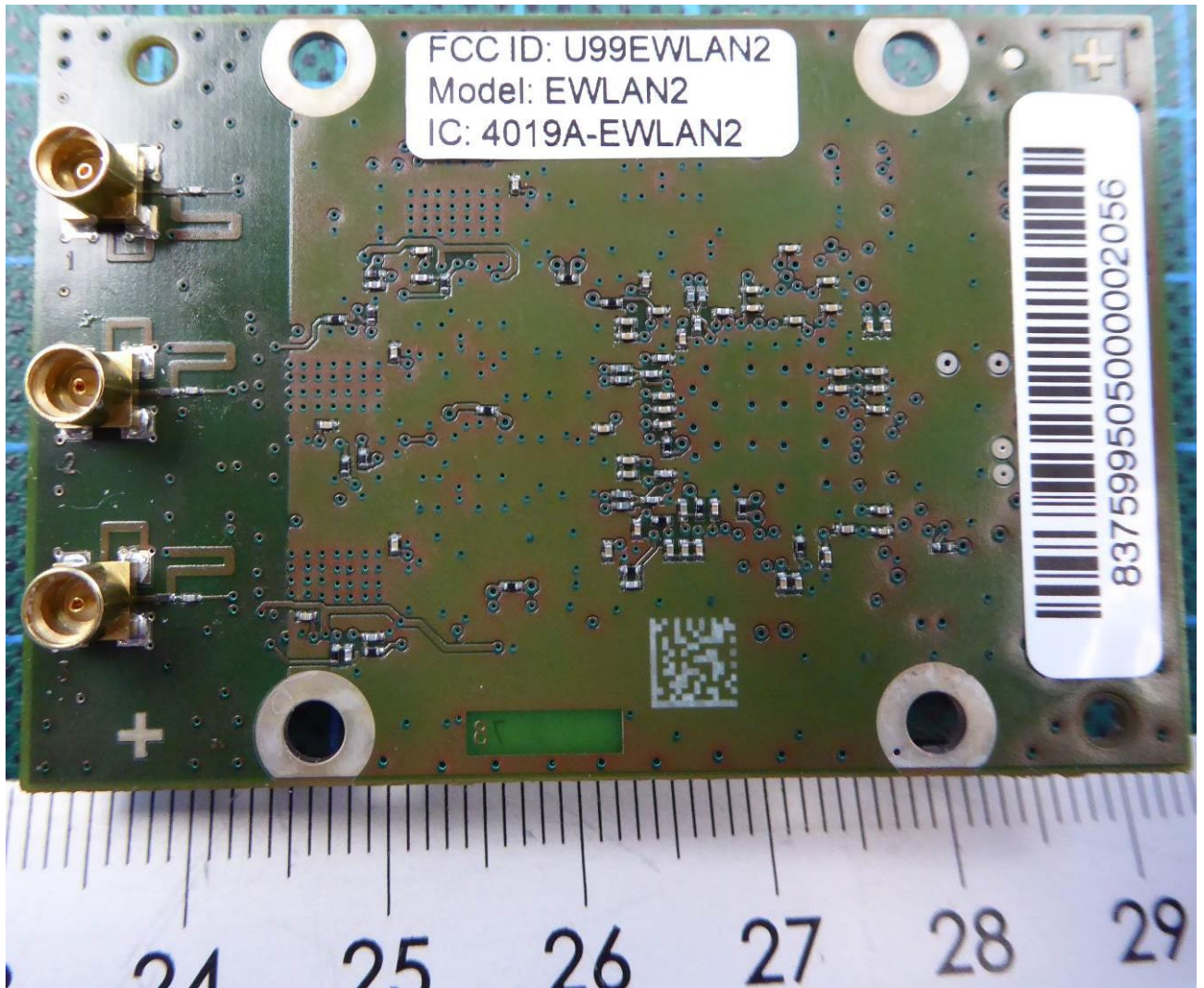
160308_12.jpg: PCI-Express cable with EUT

ANNEX B: EXTERNAL PHOTOGRAPHS



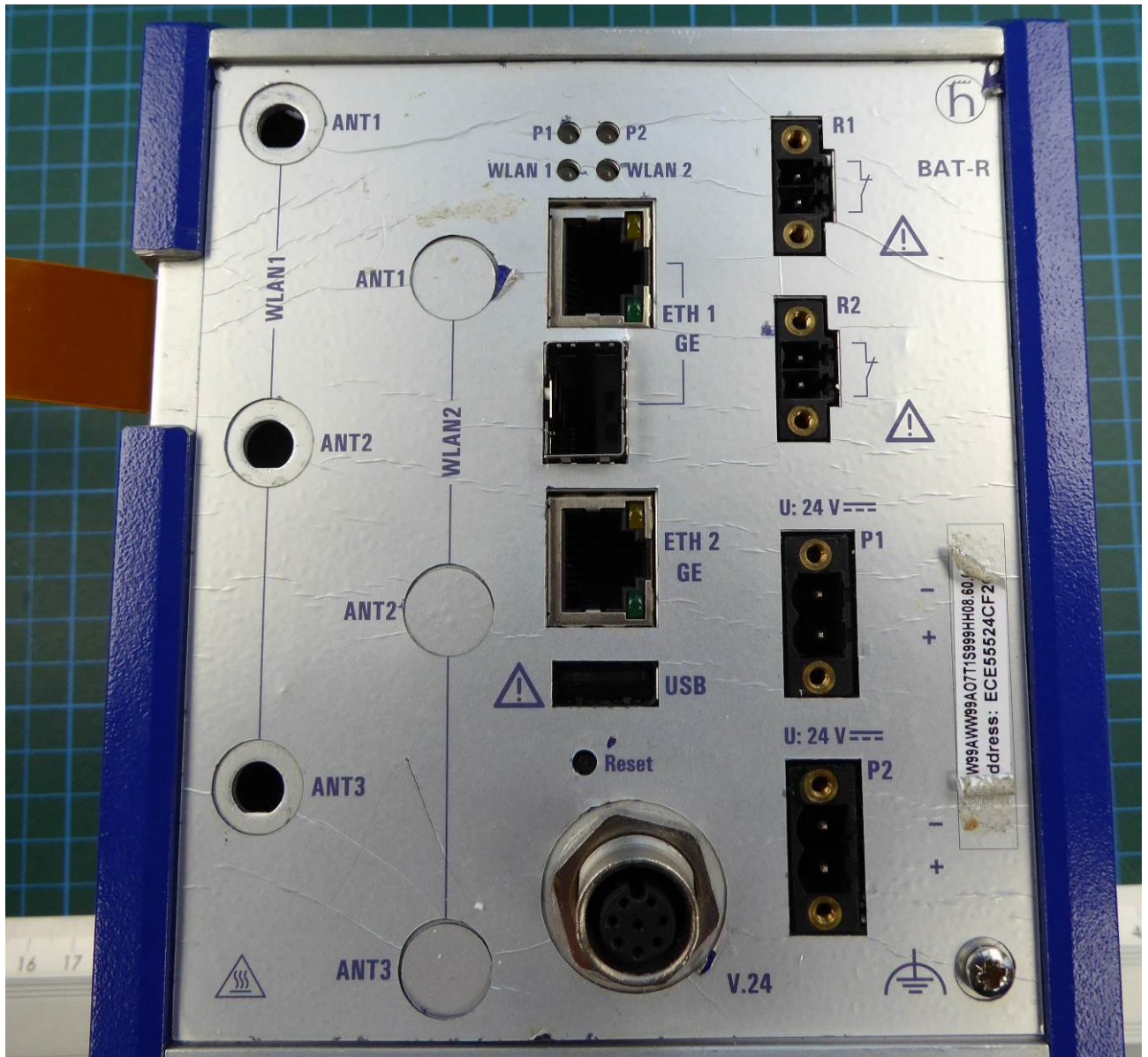
160308_13.jpg: EUT – top view

ANNEX B: EXTERNAL PHOTOGRAPHS



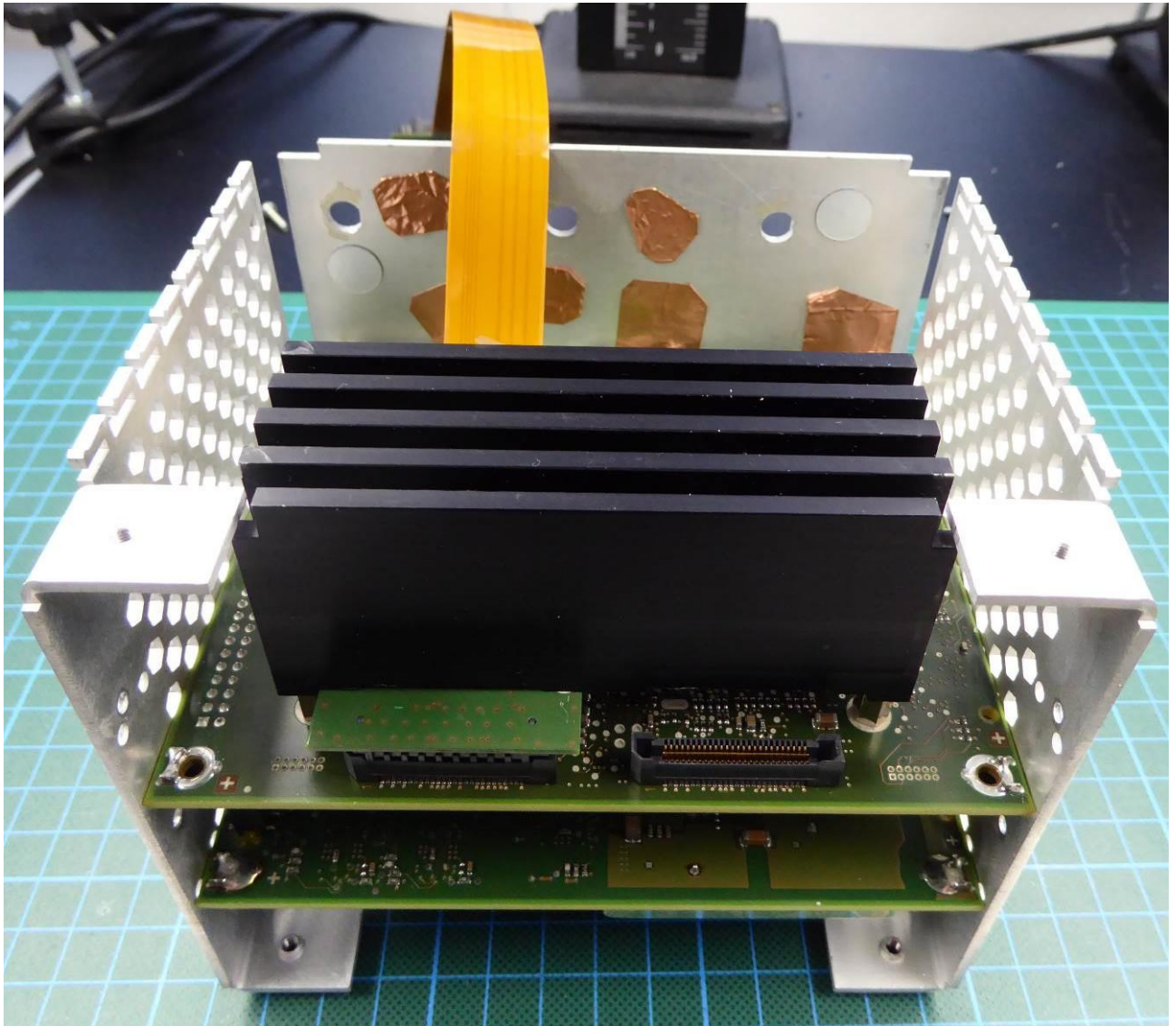
160308_14.jpg: EUT – bottom view

ANNEX B: EXTERNAL PHOTOGRAPHS



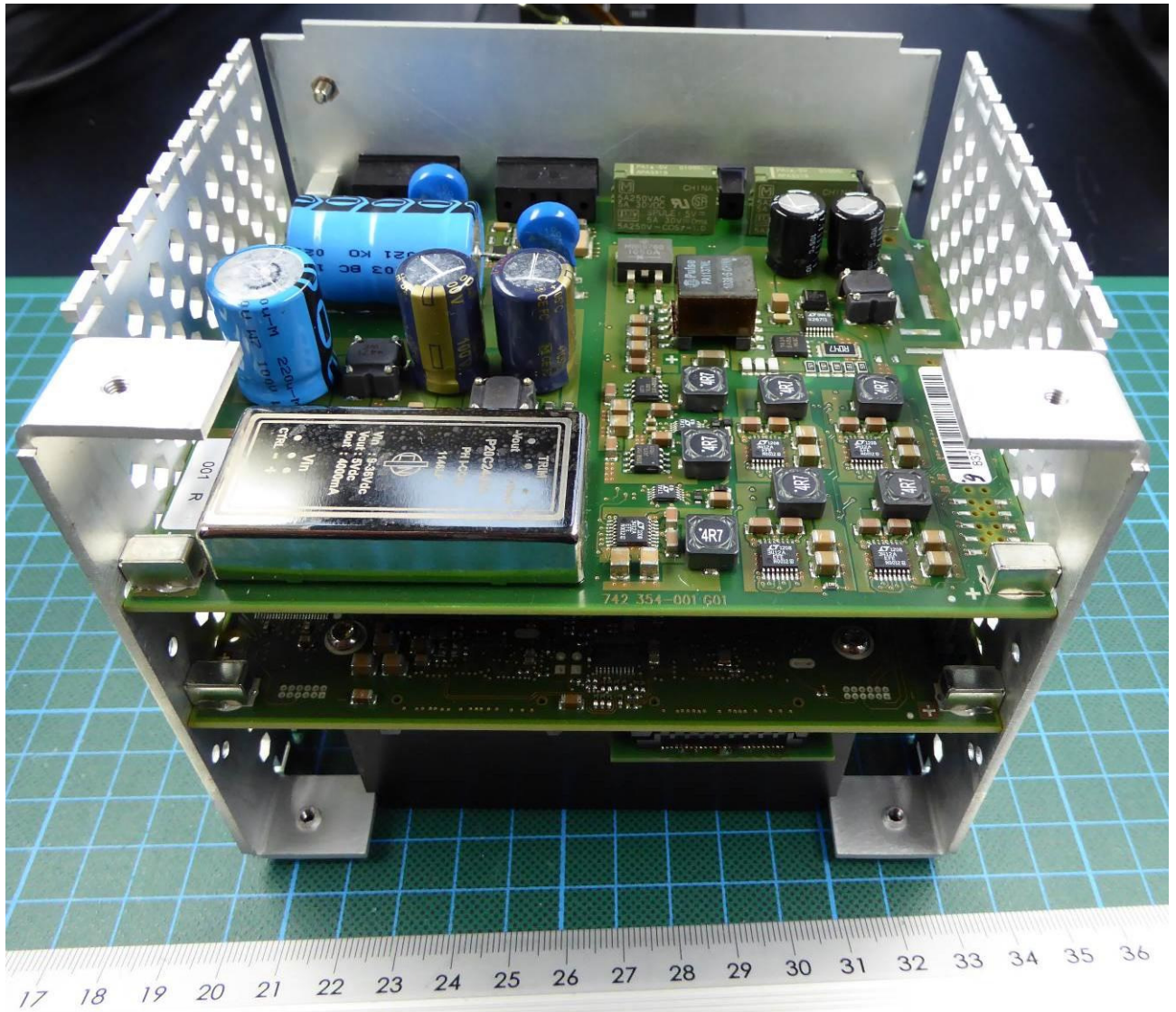
160308_15.jpg: BAT-R - Interfaces

ANNEX B: EXTERNAL PHOTOGRAPHS



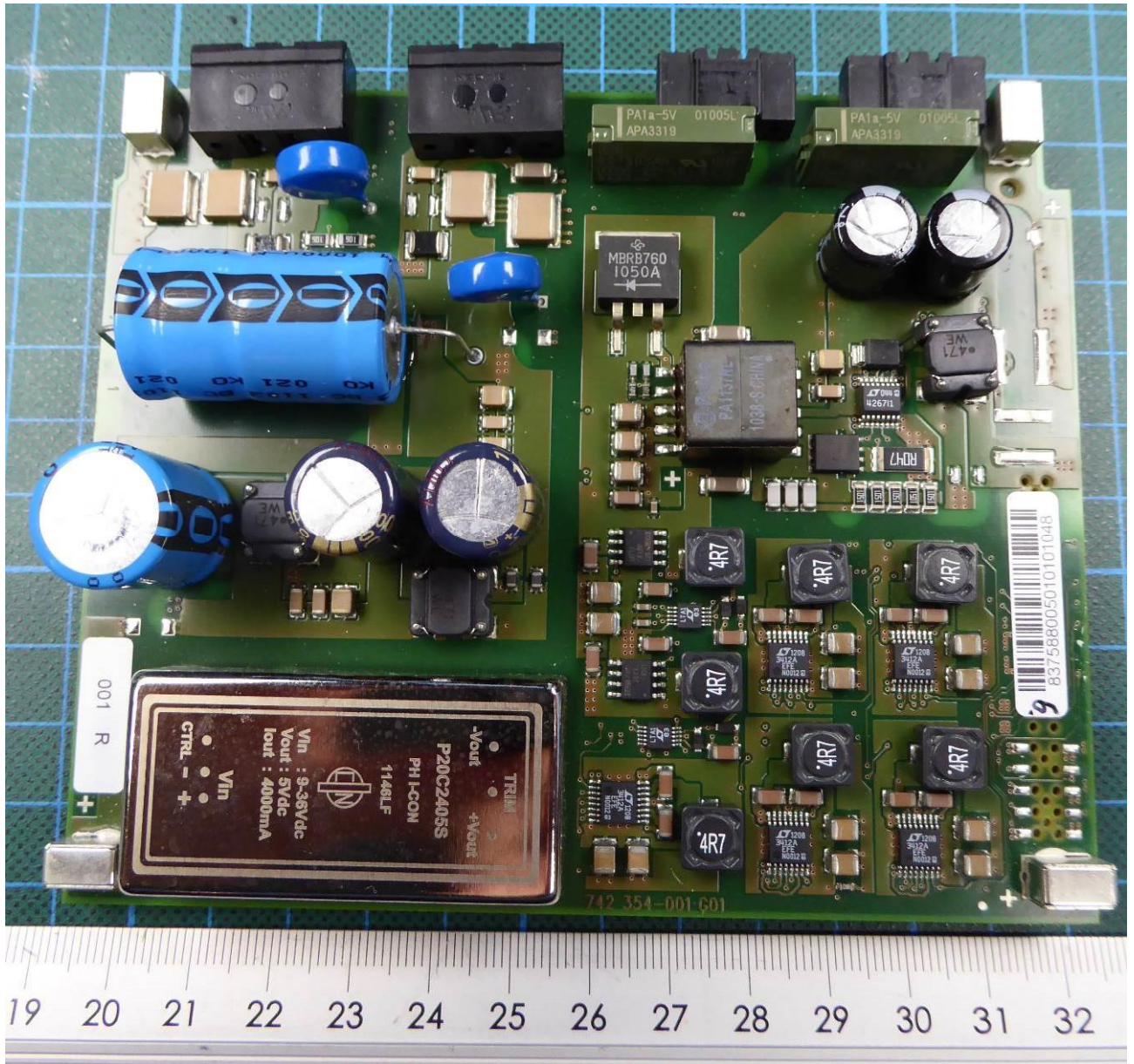
160308_16.jpg: BAT-R – Internal view 1

ANNEX B: EXTERNAL PHOTOGRAPHS



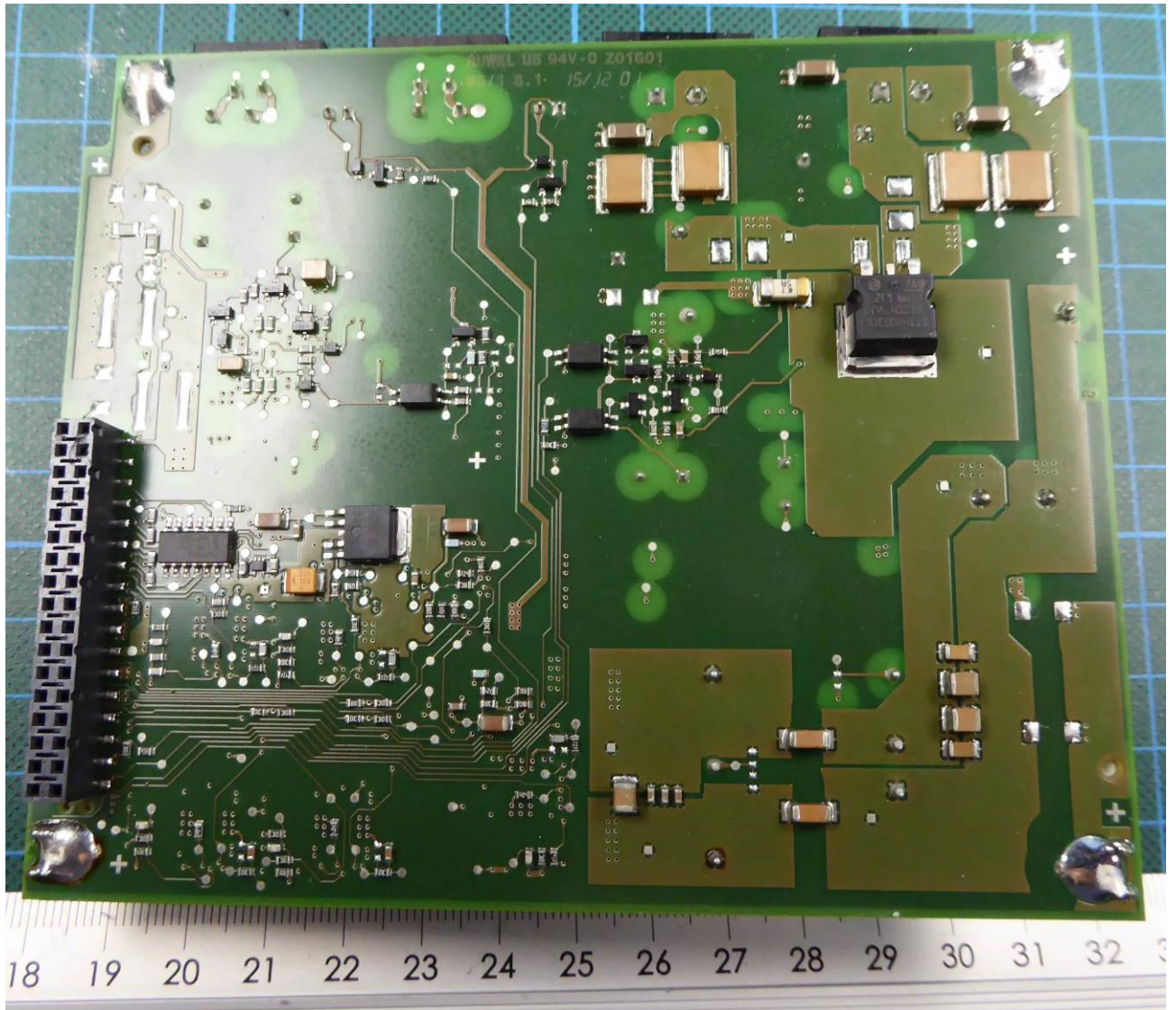
160308_17.jpg: BAT-R – Internal view 2

ANNEX B: EXTERNAL PHOTOGRAPHS



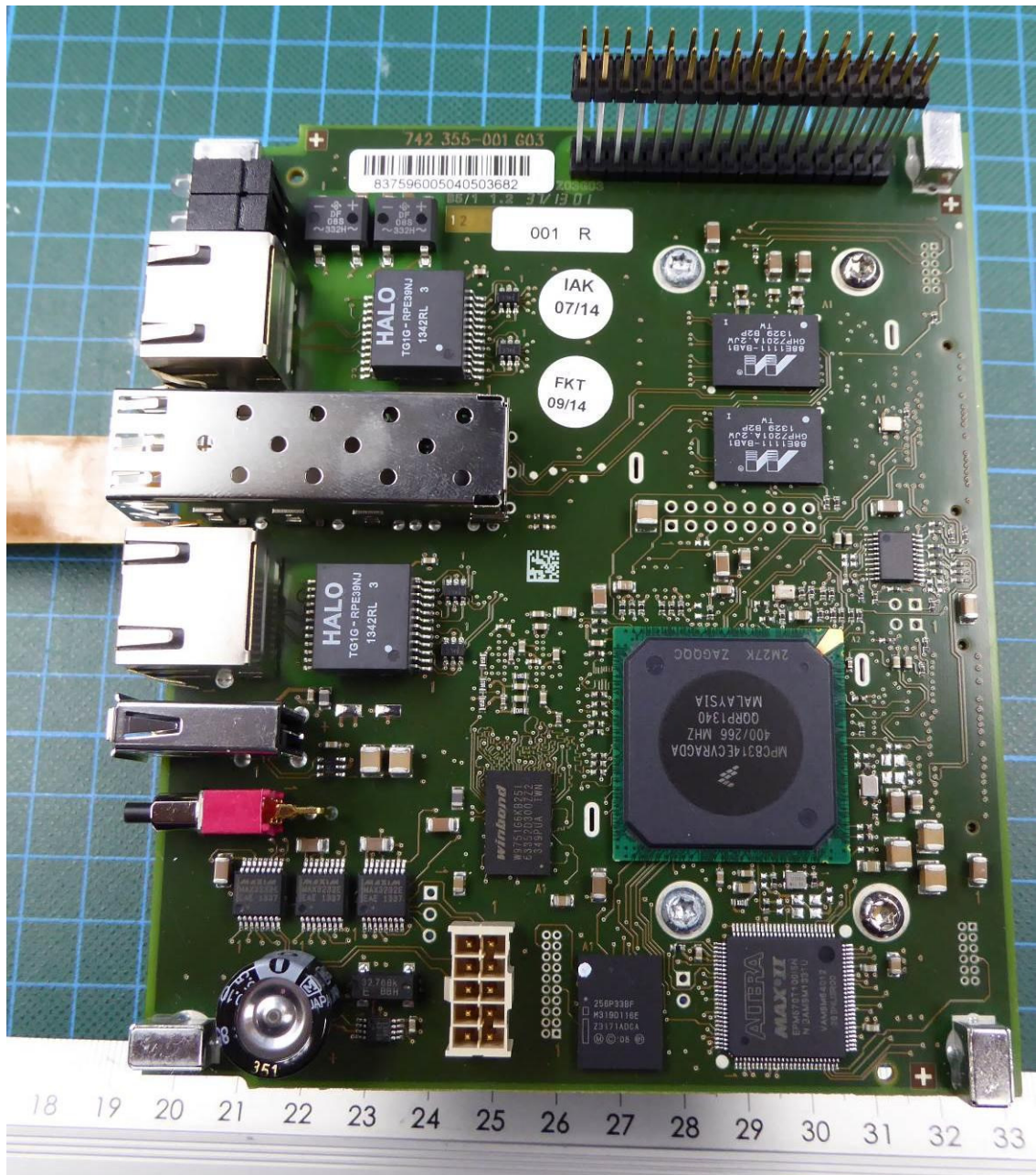
160308_18.jpg: BAT-R – Power supply board top view

ANNEX B: EXTERNAL PHOTOGRAPHS



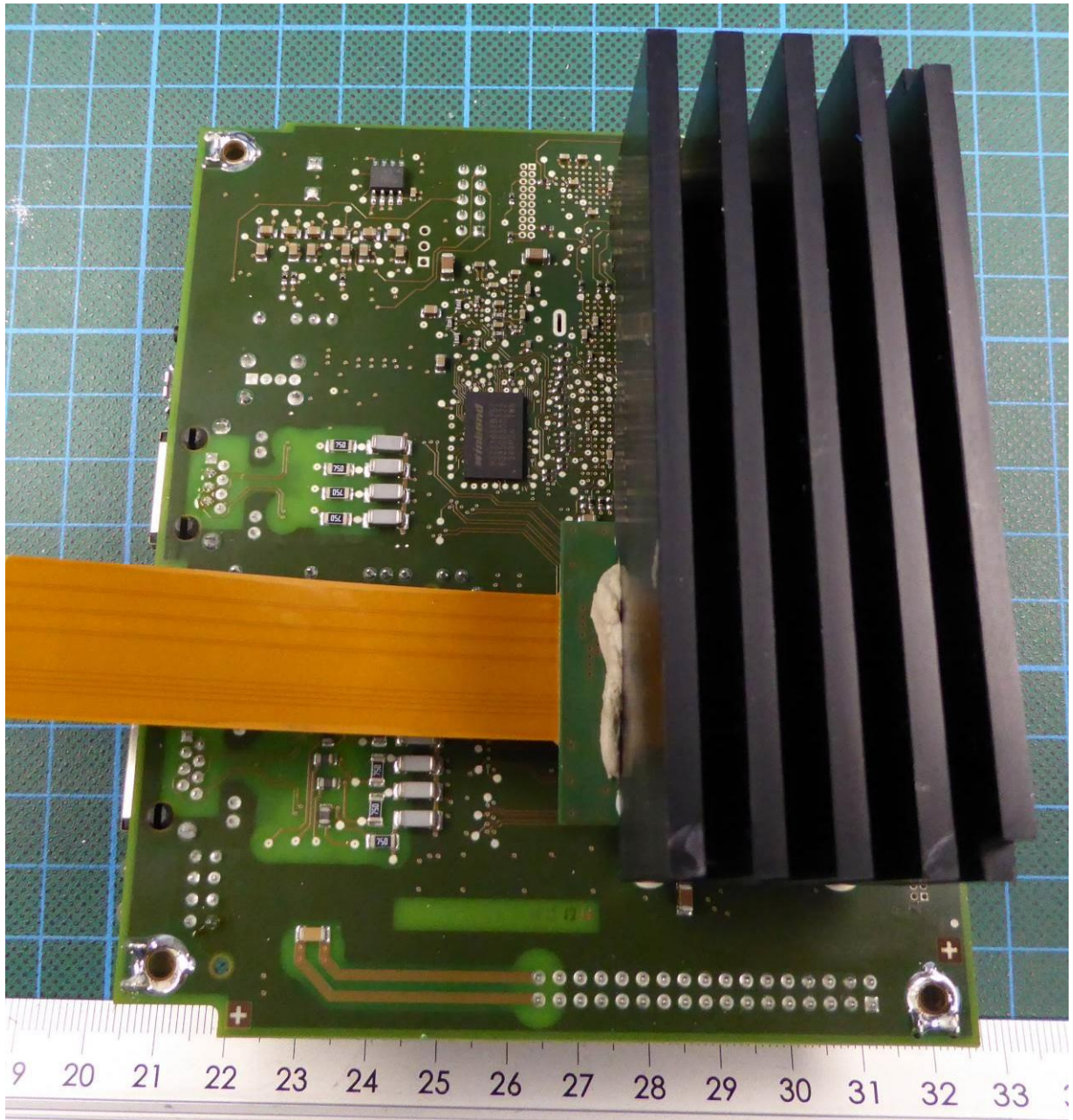
160308_19.jpg: BAT-R – Power supply board bottom view

ANNEX B: EXTERNAL PHOTOGRAPHS



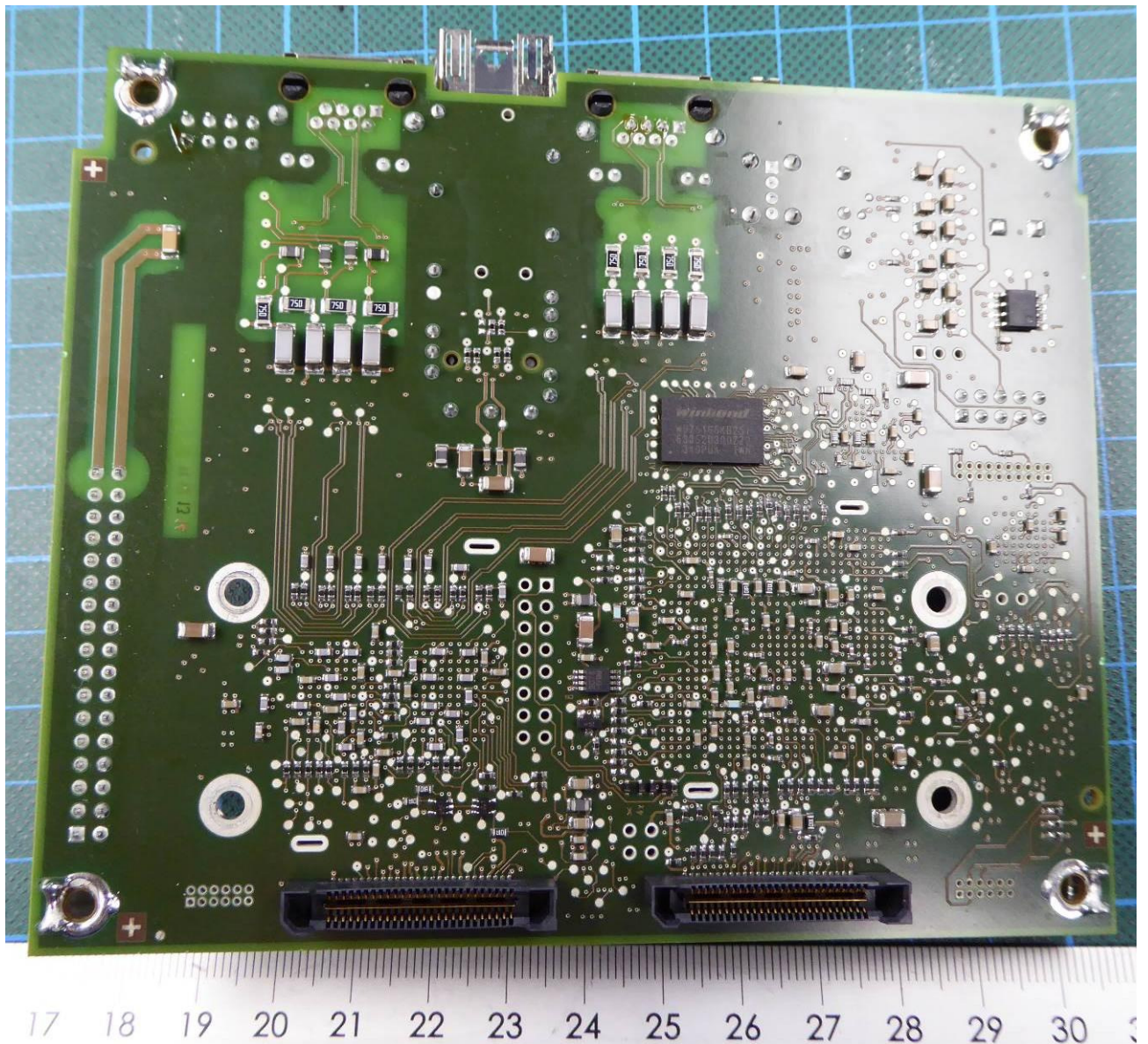
160308_20.jpg: BAT-R – Communication board top view

ANNEX B: EXTERNAL PHOTOGRAPHS



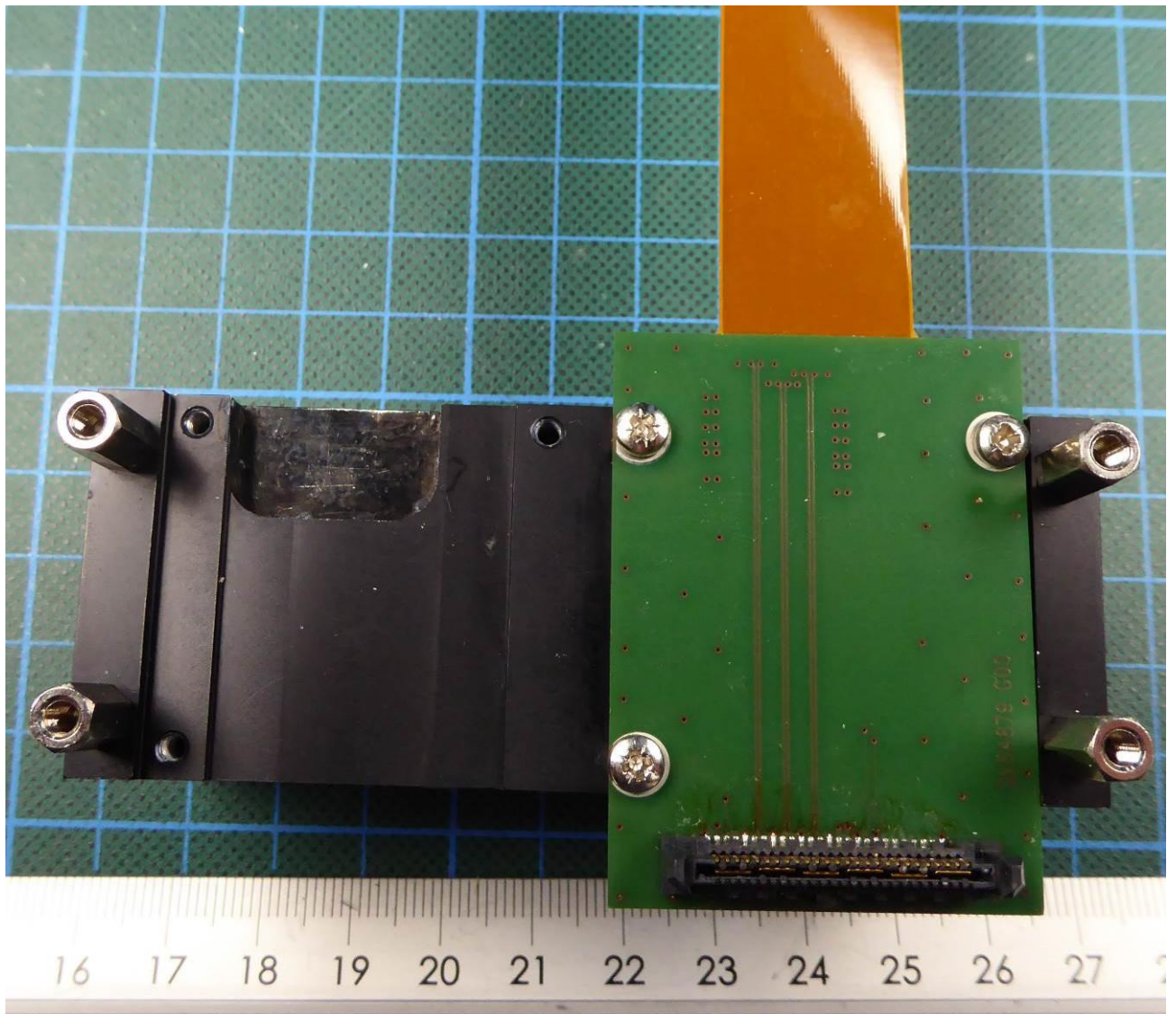
160308_21.jpg: BAT-R – Communication board bottom view with PCI-Express cable

ANNEX B: EXTERNAL PHOTOGRAPHS



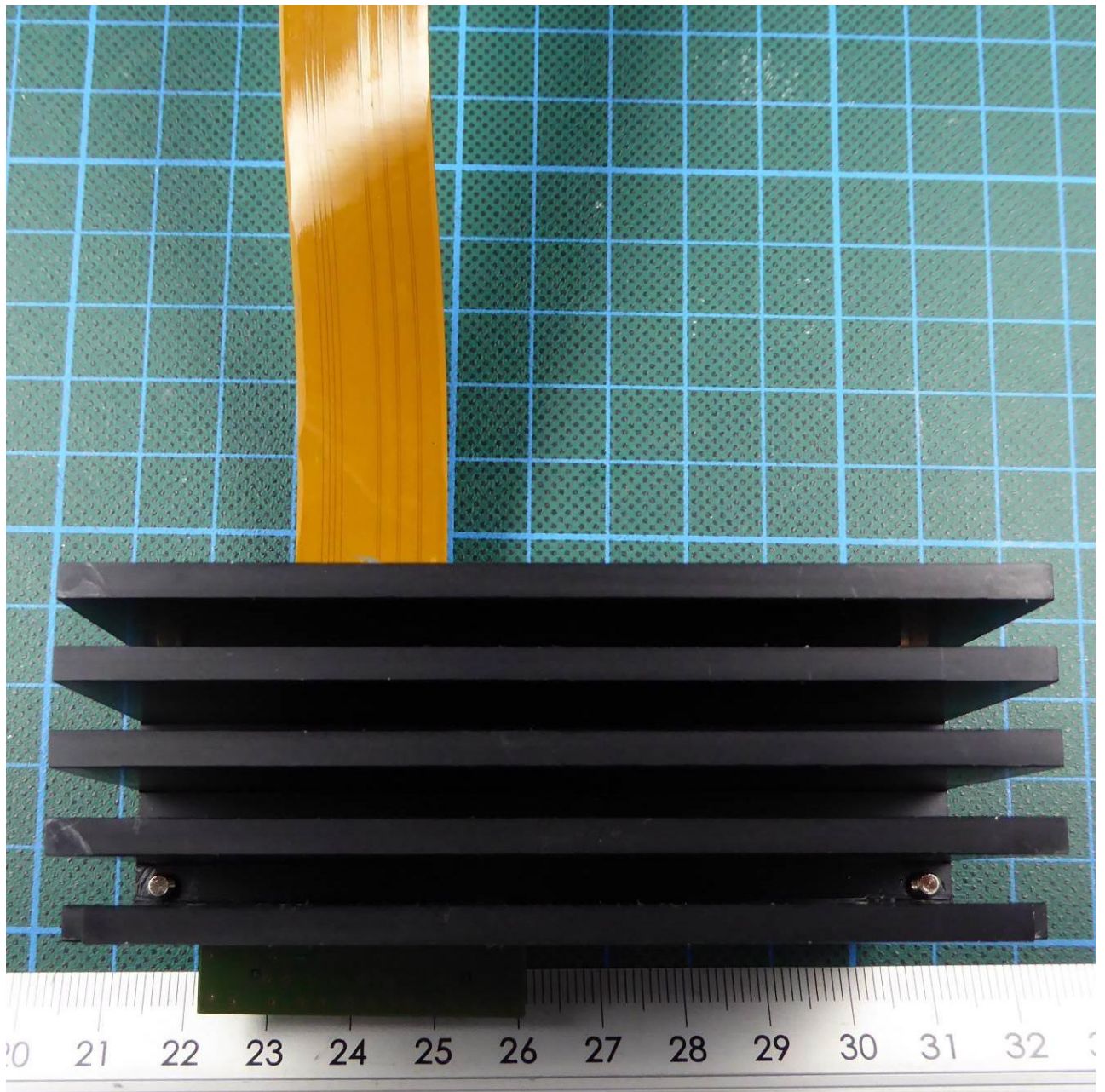
160308_22.jpg: BAT-R – Communication board bottom view without PCI-Express cable

ANNEX B: EXTERNAL PHOTOGRAPHS



160308_23.jpg: BAT-R –PCI-Express cable with Heatspreader bottom view

ANNEX B: EXTERNAL PHOTOGRAPHS



160308_24.jpg: BAT-R –PCI-Express cable with Heatspreader top view