



Specifications Sheet

Object	External Dipole Antenna	Page	1 of 6
Customer		Date	July 16, 2005
System	WLAN/Bluetooth	Rev.	IR
Model Name	WE - 2405TO	Written by	

Electrical Specifications

Frequency Range (MHz)	2400 ~ 2483.5
Band Width (MHz)	83.5
V.S.W.R (Min)	1.9 : 1
Gain (Max)	4.966 (dBi)
Input Impedance	50 (Ω)
Polarization	Linear

Mechanical Specifications

Antenna Size (Width x Length x Height)	182.5 × 10 mm
Weight	N / A
Radiator Material	Copper
Operation Temperature	- 30 ~ 70 (°C)
Operation Humidity	10 ~ 90 (%)

Option	
Remarks	

WINiZEN Co., Ltd.



Fig 1. Return Loss (Agilent E8357A 300KHz~6GHz PNA Series Network Analyzer)



Fig 2. V.S.W.R (Agilent E8357A 300KHz~6GHz PNA Series Network Analyzer)

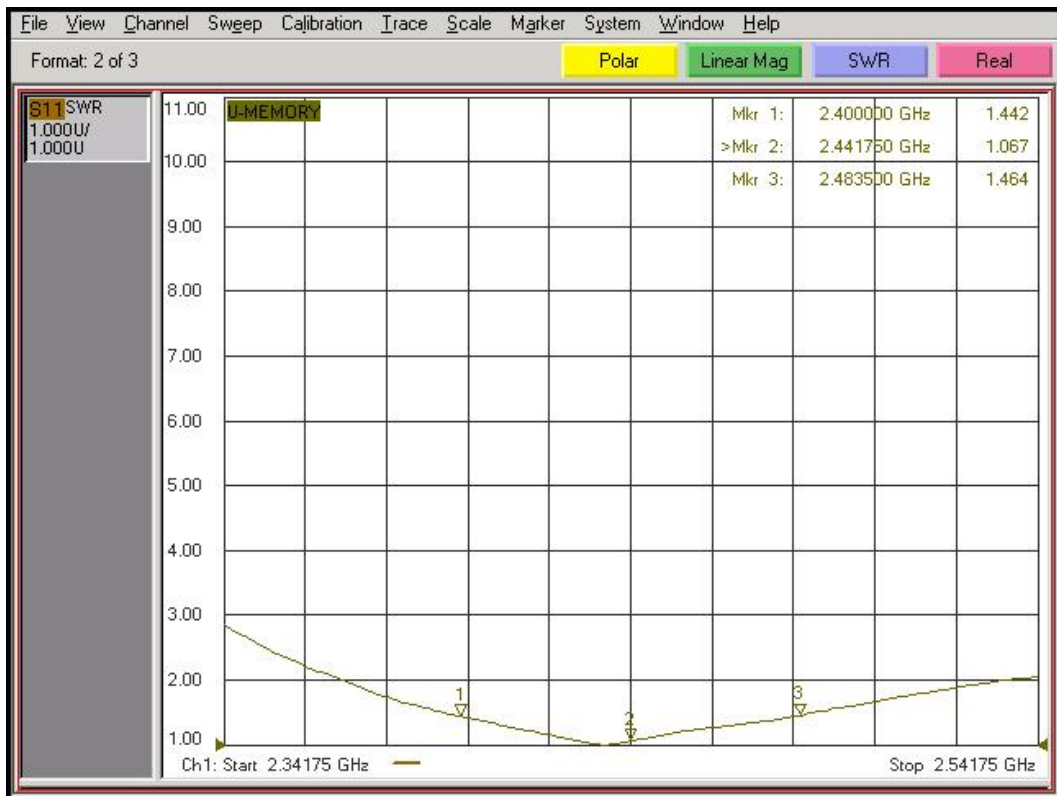


Fig 3. Smith Chart (Agilent E8357A 300KHz~6GHz PNA Series Network Analyzer)

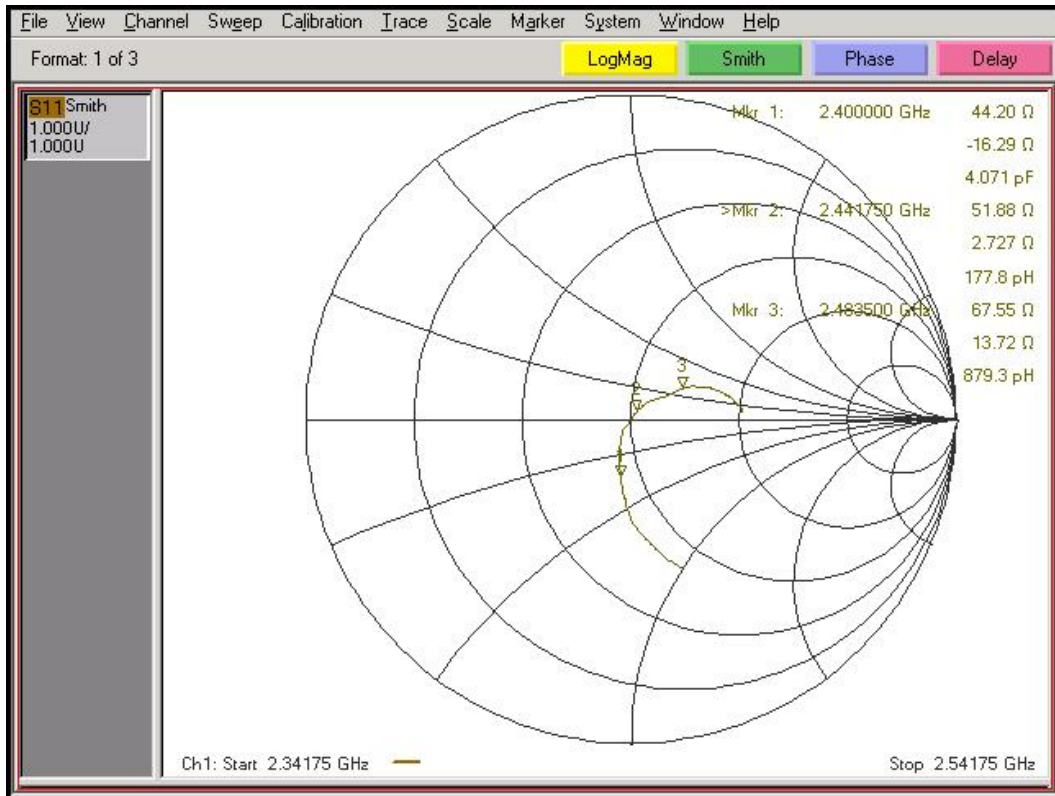


Fig 4. Measurement Configuration

(Hewlett Packard 8722ES 50 MHz~40 GHz S-Parameter Network Analyzer)

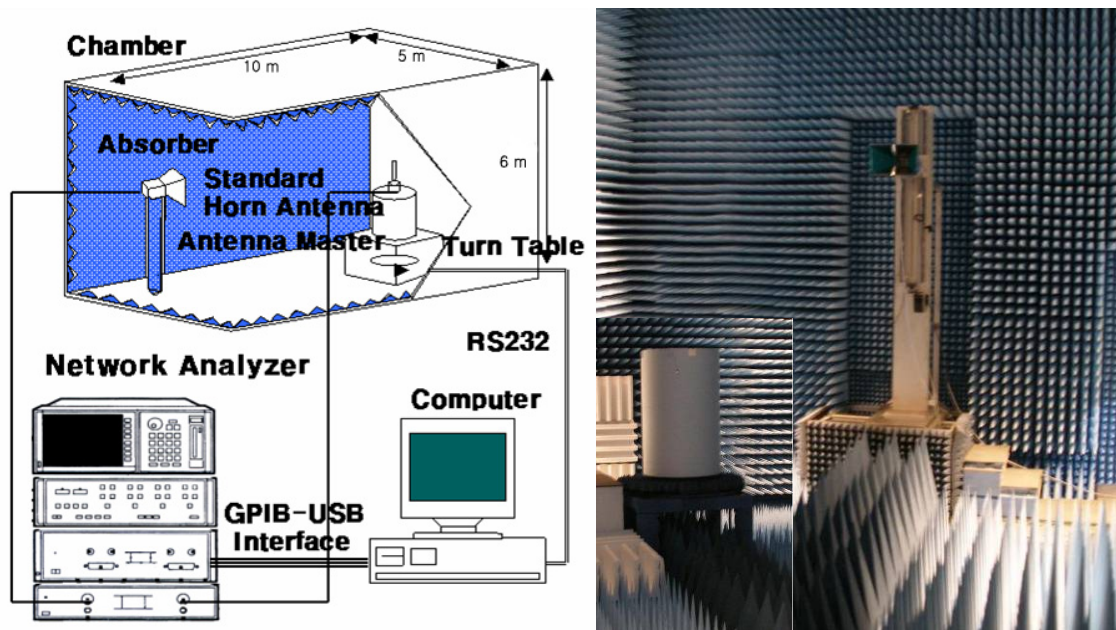
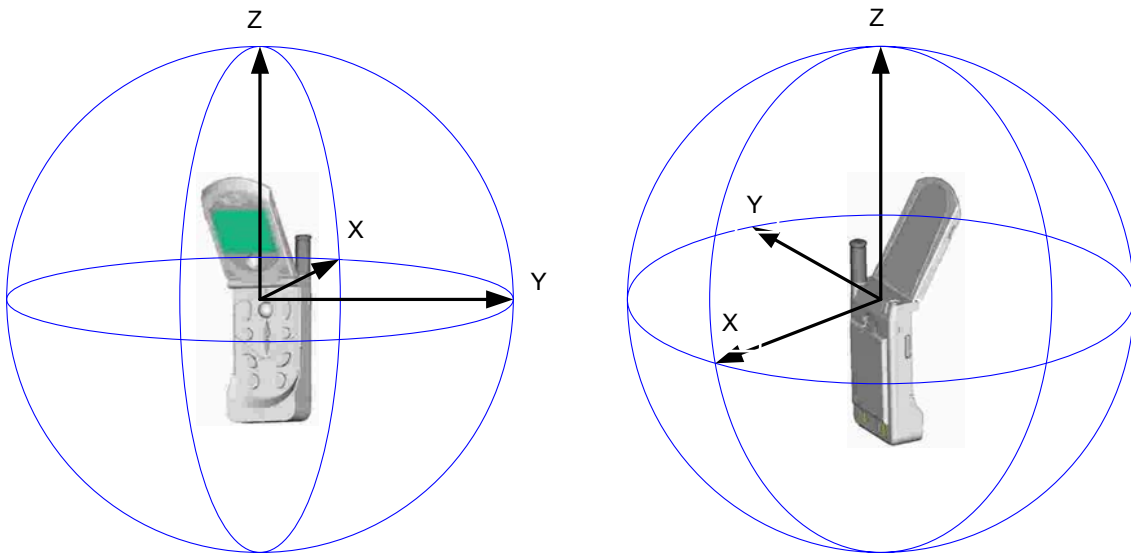


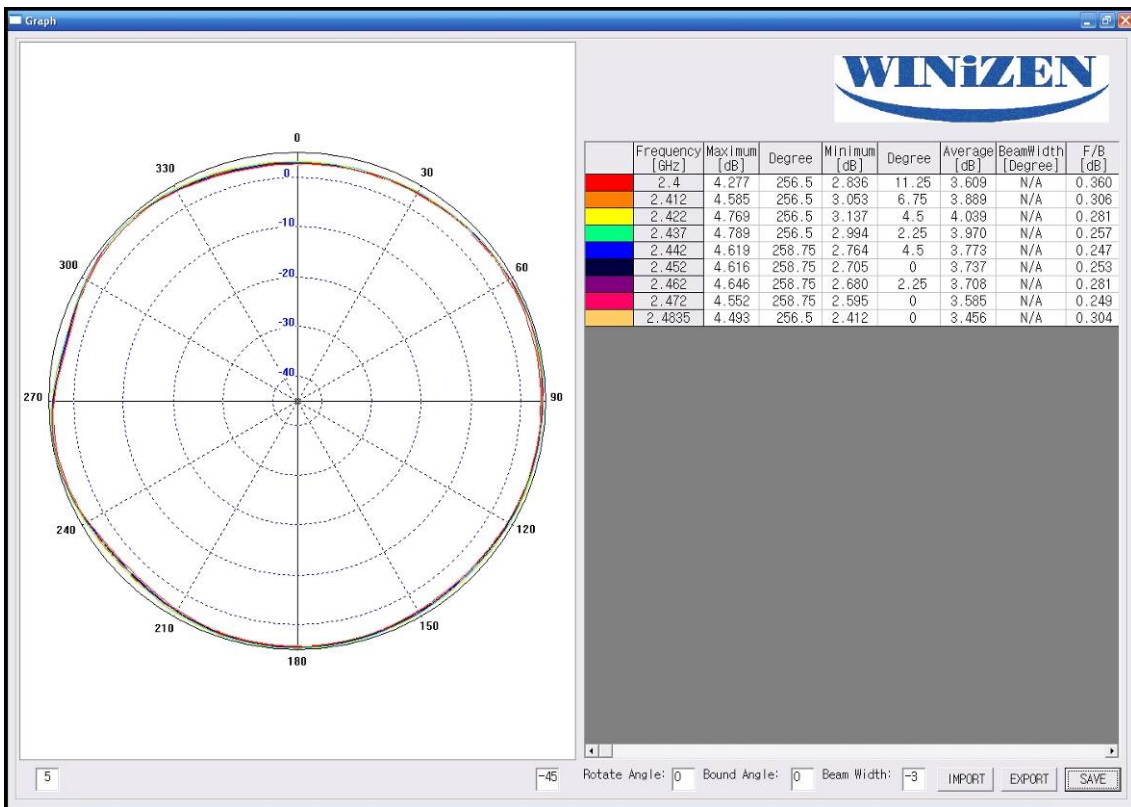
Fig 5. Axis Definitions (Antenna Center)



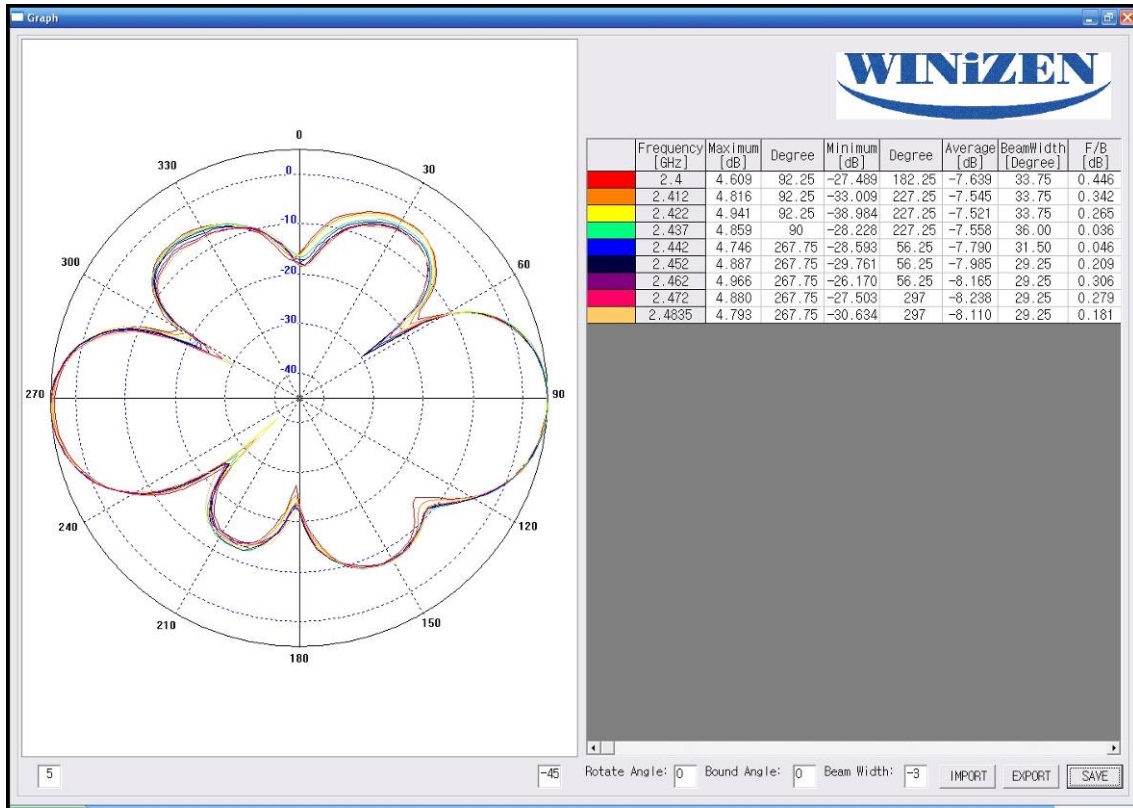
- a. Azimuth Pattern (Co-pol) : XY Plane ; Horn Antenna Polarization : Vertical
- b. Elevation Pattern (Co-pol) : XZ Plane ; Horn Antenna Polarization : Horizontal
- c. Elevation Side Pattern (Co-pol) : YZ Plane ; Horn Antenna Polarization : Horizontal

Fig 6. Gain Patterns

a. Azimuth Pattern



b. Elevation Pattern



c. Elevation Side Pattern

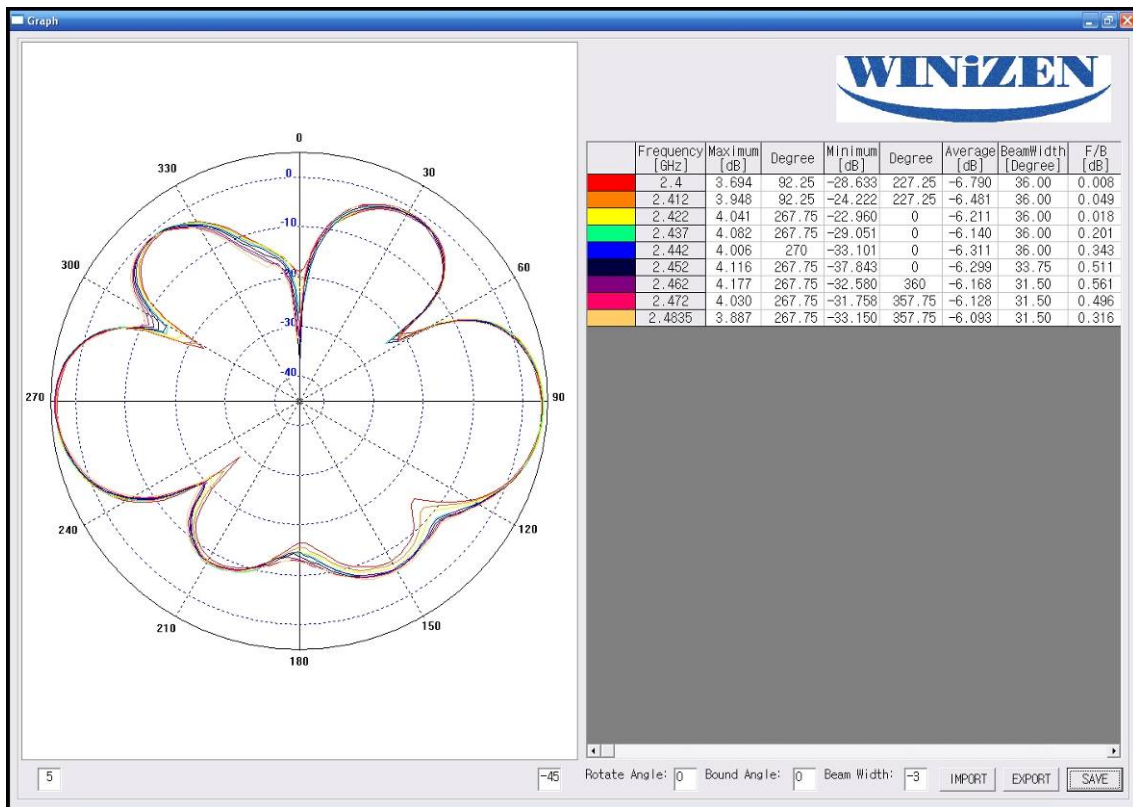
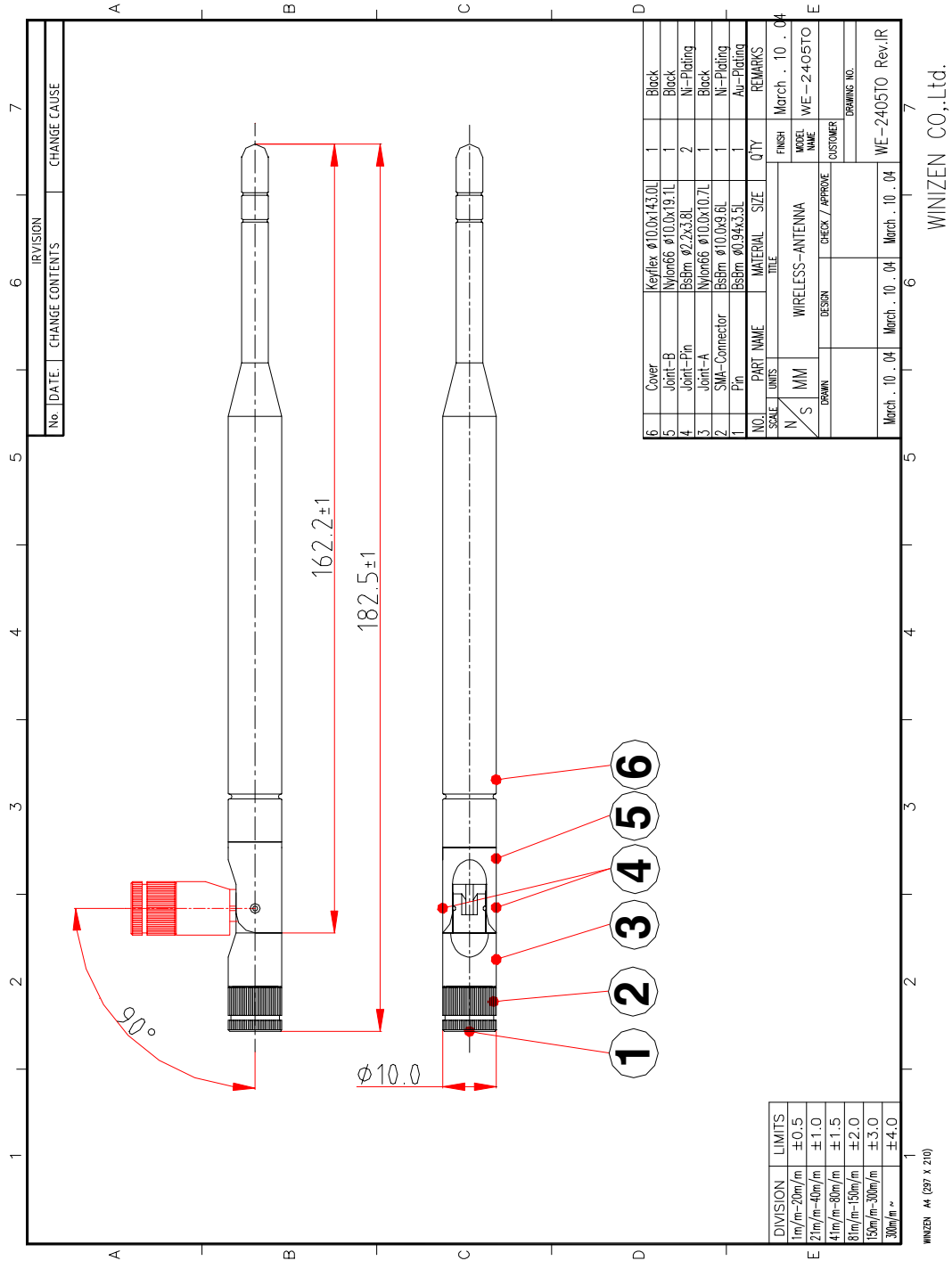


Fig 7. Antenna Mechanical



WINIZEN CO.,Ltd.