

# **M<sub>3</sub>Sky** User Manual

Please read "**the safety guide**" before use and use it in a proper manner.



All the information of user manual and programs in CD can be downloaded at the [mobilecompia](http://mobilecompia.com) homepage.



**MOBILE COMPIA**  
Your Best Mobile Biz Partner

## Note

- This manual is subject to copyright protection along with all relevant rights.
- No part of this document can be copied, reproduced, changed or translated in whole or in part by any means without prior written consent of MOBILECOMPIA Co., Ltd.
- The content of the manual is provided “as-is” and be subject to change at any time without notice.
- MOBILECOMPIA Co., Ltd. makes no warranty of any kind with regard to this manual, including, but not limited to, the implied warranties of merchantability and fitness for a particular purpose.
- Microsoft, ActiveSync, Windows, Windows logos, Windows Mobile 5.0 logos are trademarks, or registered trademarks of Microsoft Corporation in the United States and/or other countries. Microsoft OEM products are licensed by Microsoft Licensing Inc., a entirely owned subsidiary of Microsoft Corporation.
- All other product names in this document or product are company names, trademarks or registered trademarks of the respective owners.

## Copyright and Agreement

- This user manual is provided “as-is”. It may contain editing error or omitting due to the difficulty of expressing technical feature.
- If an application program provided by other supplier using by M3 SKY, refer to the supplier for a program manual.
- The application program providers have the responsibility of indicating their contact number for customer service on M3 SKY terminal, item box, or program.
- MobileCompia Corporation do not warranty any programs produced and added by the third software companies after M3 SKY products are distributed from factories.
- MobileCompia Corporation has the right to ask warranty of any programs to the program providers to meet the needs of mobile networking companies.
- The contents in the user’s manual are protected under the Software Copyright Act. Copy, reproduction, distribution of the contents in the user’s manual without any written agreement notice of MobileCompia Co. Ltd., is considered as criminal actions.
- Windows, MS Office, Outlook, ActiveSync, Internet Explorer programs are the registered brand of Microsoft.
- M3 SKY is the registered brand of MobileCompia Co. Ltd.
- The brands of other products and service referred in this manual belong to corresponding providers.

## Caution when using M3 SKY (1)

- User Caution
  - When the unit is lost or stolen, notify to network provider immediately.
  - Do not rent the unit to third person without authorized permission.
  - Do not use the unit while driving.
  - For technical help, contact designated service centers.
  - Contact responding suppliers directly for questions on applications and work programs other than hardware and basic installed applications.
  - Use supplied adapter and accessories by MobileCompia Co. Ltd.
  - Any defect on a unit while using other batteries, chargers and accessories can not get warranty.
- Carrying and Storage Caution
  - Avoid to use the device under high temperature and humidity. It may cause fatality to the device.
  - Avoid intentional dropping from high elevation. It may cause fatality to the device.
  - Charge batteries fully before the first time use of the device.

## Caution when using M3 SKY (2)

- Do not reconstruct
  - Do not reconstruct M3 SKY for any purpose.
  - It may cause fire in the unit, and wound or electric shock to users.
  - Any defect caused by reconstructing units, can not get warranty.
- Illegal copy of mobile phone is prohibited
  - The person who reproduces mobile phone and uses this mobile phone is considered as criminals.
  - The use of lost or stolen mobile phone is considered as a criminal act.
  - Keeping the lost or stolen mobile phone after turning power off, is considered as a criminal act.

## Size and Features

Used frequency band		GSM 850 (TX) 824 ~ 849 MHz / (RX) 869 ~ 894 MHz GSM 900 (TX) 880 ~ 915 MHz / (RX) 925 ~ 960 MHz GSM 1800 (TX) 1710 ~ 1785 MHz / (RX) 1805 ~ 1880 MHz GSM 1900 (TX) 1850 ~ 1910 MHz / (RX) 1930 ~ 1990 MHz
Band width		200 KHz
External appearance		78.6 x 163.5 x 24.9mm (Width x length x height)
Weight		320g
Transmission output power		Maximum 0.3W
Operational Temperature	Main body	-10 °C ~ +50 °C
	Adapter	-10 °C ~ +50 °C
Relative Humidity		5% ~ 80%
AC Power		Input : AC 100 ~ 250V, 50 ~ 60Hz Output : DC +5.2V, 3.0A

 Supported Frequency Bands can differ depending on the supplied antenna.

# Contents

● Note	2	LED/Battery attaching/detaching	16
● Copyright and Agreement	3	Charging	17
● Caution when using M3	4	How to connect to PC	18
● Size and Features	6	2. Basic Usage	19
1. M3 Introduction	9	Calibration	20
Product Composition	10	Main screen	23
Name and function of each part	12	Input screen	24
Input Buttons	13	3. ActiveSync	29
Soft/Hard Reset	14	ActiveSync Introduction	30
How to use stylus pen	15	Installing ActiveSync	31
		Synchronization of data	32

# Contents

4. How to use internet	33	6. Usage of Device	53
Via GPRS/EDGE	34	Camera	54
Via Wireless LAN	36	Bluetooth	58
Browsing the Web Site	39	IrDA	63
5. How to use the Phone	44	GPS	64
Init Screen	45	Scanner	66
Phone Control	46		
Phone call and receive	47		
Phone book	48		
SMS send and receive	49		
Phone function	51		
Phone setting	52		





# 1. Introduction

- Product Composition
- Name and Function of each part
- Input Buttons
- Soft/Hard Reset
- How to use Stylus pen
- LED Battery Attaching/Detaching
- Charging
- How to connect to PC

## Product Composition (1)

- At the first time of opening the product box, please check if it contains all the basic components, listed as following.



M3 SKY main terminal  
+ 2 units of standard battery



Cradle + USB cable



CD + ActiveSync 4.x



Ear Mic Phone  
+ 2 units of Stylus pen



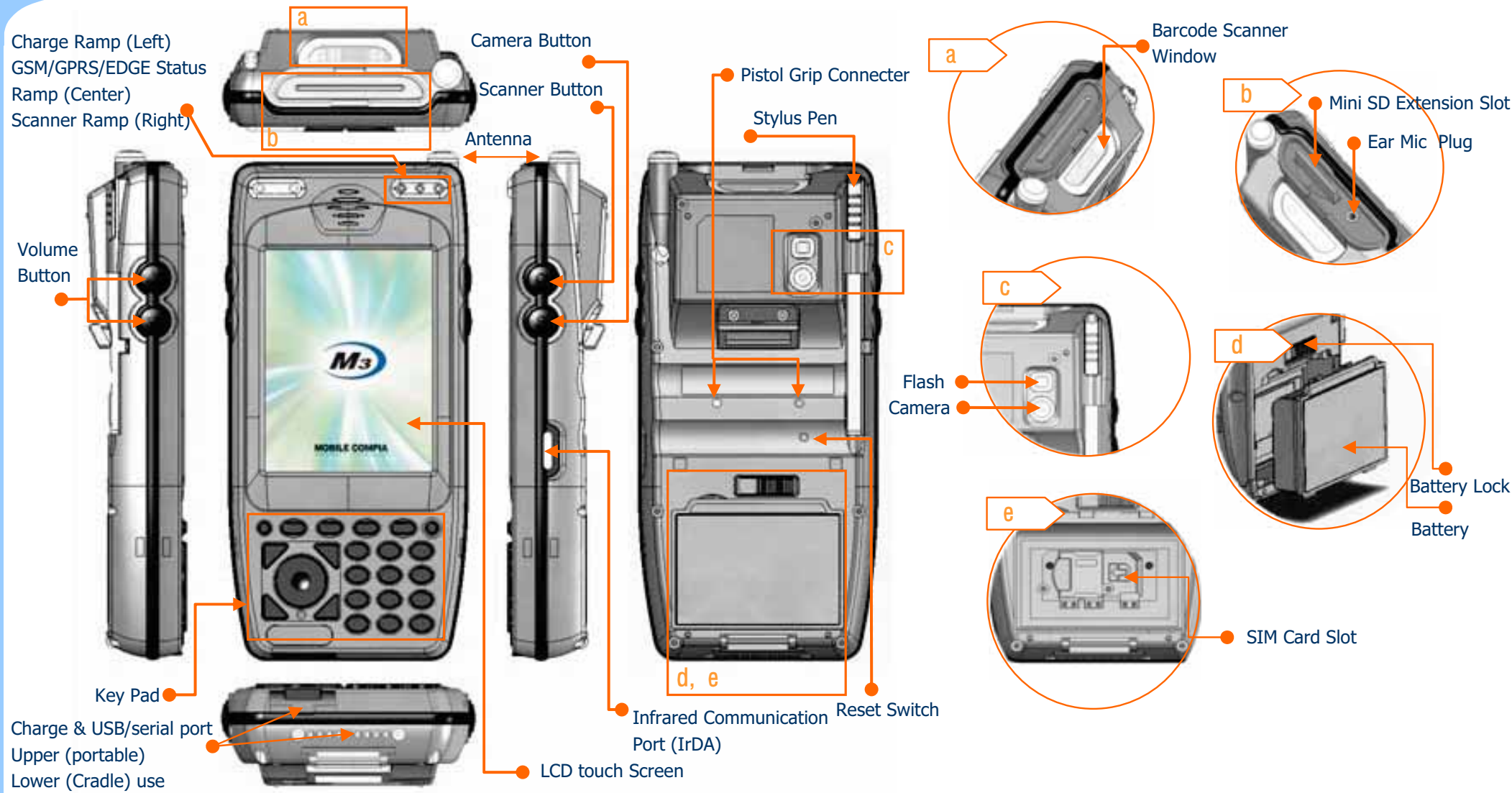
Portable Adapter

 The product components may differ depending on the supplied products.

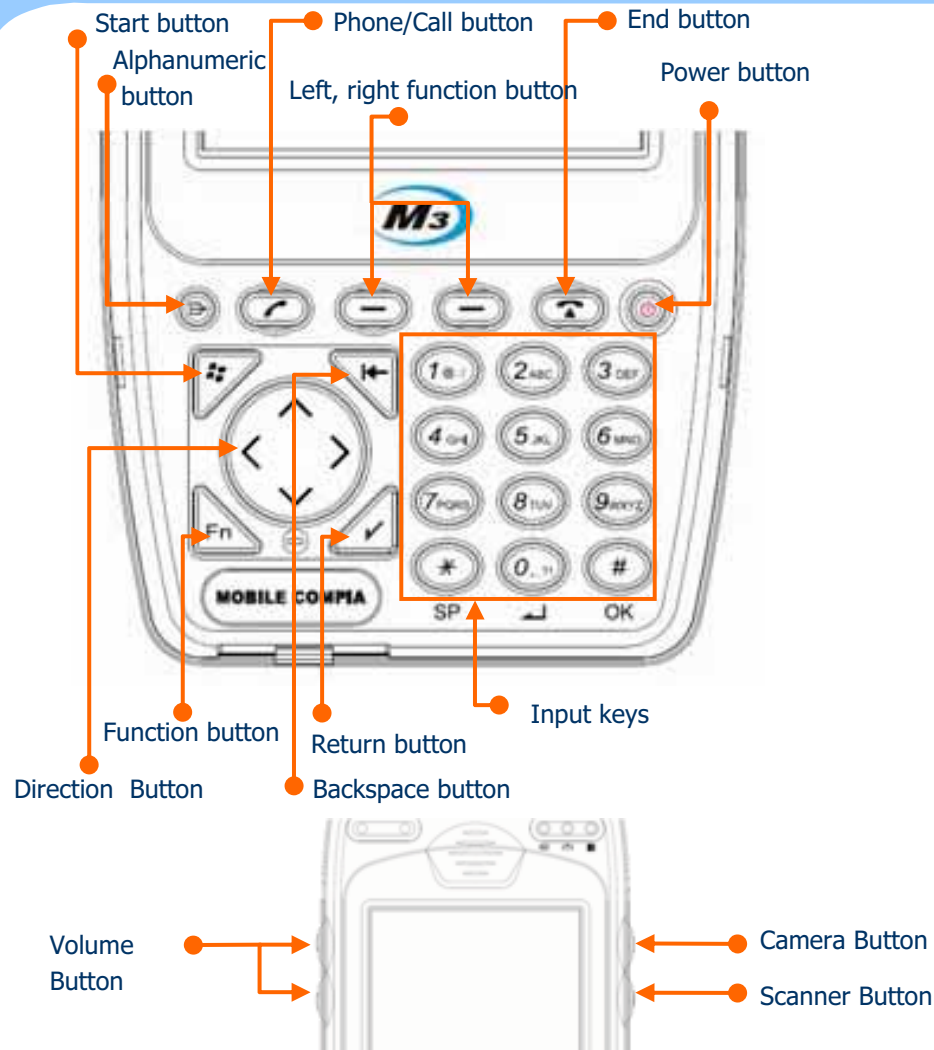
## Product Composition (2)

- How to use the manual
  - This manual provides detailed information to make using the device easier and faster.
  - The content related to phone or communication in this manual is only applicable when the device is equipped with GSM/GPRS/EDGE module for Voice and Data communication.
  - The features described in this manual can not be used when it is not equipped in the device (e.g. GSM, WLAN, Bluetooth, IrDA, Scanner, Camera, GPS).
  - The content of this manual is subject to change without prior notice due to product improvement or modification of its functions, etc.

# Name and function of each part



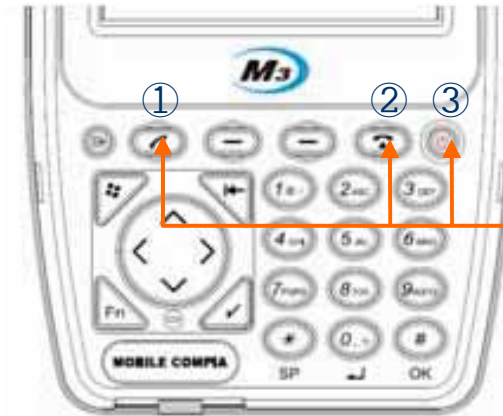
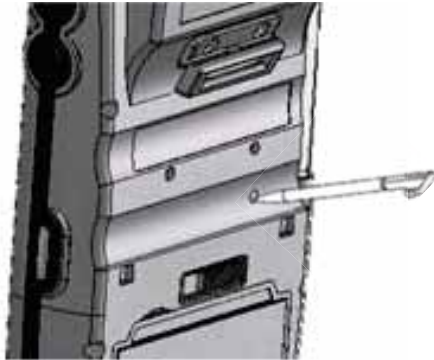
# Input Button



Component	Description
Power button	Press to toggle the device on/off.
	Long press to menu (Backlight, Display, etc) Function
Phone/Call function	press to accept the call or to execute the phone
End function	press to hang-up/reject the call.
Input keys	Press to input alphabet characters or numbers
Left, right function button	press to lunch an assigned application or function
Alphanumeric	press to switch between alphabet and number input
Start button	Press to display the Start menu.
Backspace button	press to move back
Function button	press to Function Key with (*, 0, #)
Direction button	press to move left,right and up,down
Return button	press to confirm the action
Scanner button	Press to launch the barcode data scan application
Camera button	Press to launch the Pictures & Videos
Volume button	Press the top key to increase volume, press the bottom key to decrease volume.

⚠ Some key functions might not be supported, depending on the option.

# Soft/Hard Reset



Press ①+②  
and ③ power button

- **Soft Reset**
  - A soft reset allows your device to get a fresh start, similar to rebooting a computer.
  - This restarts your device and adjusts memory allocation.
  - All records and entries are retained after a soft reset.
  - Unsaved data in open programs may in some cases be lost.
- **To perform a hard reset :**
  - Press the power button for more than 12 seconds to turn off the power (can be confirmed by LCD off)
  - While pressing call and end button, please press the power button shortly.
  - When the [CLEAN BOOT WARNING] window will pop up with message "All data will be lost! Do you want to continue?"  
"1. YES 0. NO, please press 1 to perform the Hard Reset.
- **Hard Reset**
  - A hard reset removes power to your device.
  - This erases all records and entries, deletes all additional programs you have installed, and restores the device's default factory settings.
  - Never perform a hard reset unless a soft reset does not correct your problem.

 Please mind that you need to set up the standard timezone date, and time. After power off.

# How to use Stylus Pen

- **Tap**

Tap the touch screen one time using a Stylus pen to select and execute items and files.



- **Drag**

It is used when you select the text. Please drag the desired part with stylus pen attached on the screen.

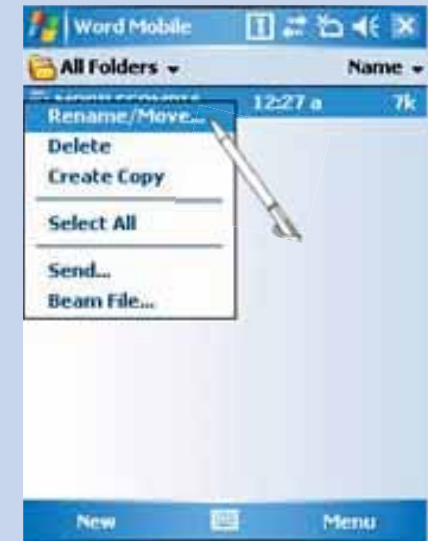


- **Long Press**

Leave Stylus pen touching the screen for long and you can select the menu on the pop-up screen.

You can also select functions available in the designated item using the pop-up menu.

The function of the pop-up menu can be different according to the program.





## LED / Battery attaching/detaching

- LED Alarm
  - Informs Charging, Scanner Status.

Type	LED Status	Details
LED for charging	Red Green	Charging Charging complete
GSM /GPRS Status LED	Blue Blinking	GSM/GPRS Standby (within range of phone/internet)
	Blue On	GSM/GPRS in use (phone/SMS/internet in use)
	Blue OFF	GSM/GPRS is off or out of range
Scanner LED	Green	When the barcode data is successfully read

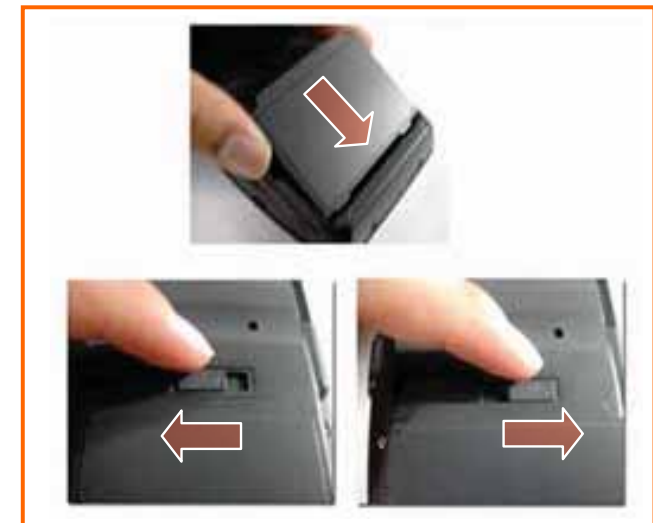
- Battery attaching/detaching

- Attaching Battery

As picture shown, put the battery pack to back of PDA, and lock the battery pack with locking device.

- Detaching Battery

Press locking device to the right, then using upper notch, detach the battery from main body.





# Charging

- Connect plug-in from charger to charge jack of main body, or charge jack of cradle, and then place main body onto cradle.
- Charging LED

Type	LED Status	Details
Direct charging to main body	Red Green	Charging Charging Complete
Cradle Charging (Extra battery charging)	Red Green	Charging Charging Complete

- When charging, the status of the battery attached to main body can be confirmed by the LED left of upper corner of main body. Also the status of Sub-battery can be confirmed by the LED right of low corner of Cradle.

- Charging in Cradle



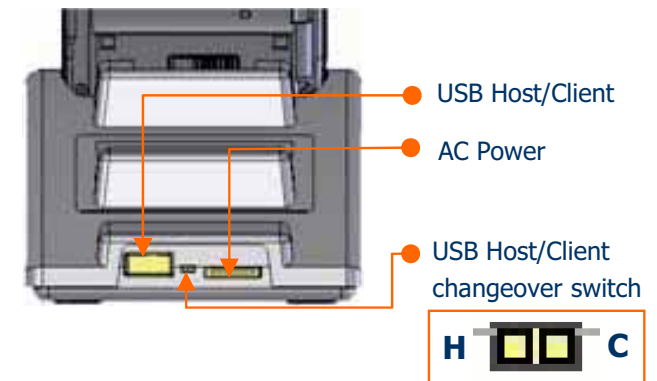
- Charging using portable adapter



- ⚠ Do not use any other charger except one (5.2 V / 3A) provided .
- ⚠ Make sure to handle it gentle; damage with excessive force may cause no warranty.
- ⚠ Incongruent change of battery can cause the explosion.
- ⚠ When attached battery is completely discharged, plug charger to main body, then reset the device to check if screen is back on. To use, do at least 10 minute charging.

## How to connect to PC

- A cradle of M3 SKY supports charging and USB connection.
- Connecting step of cradle of M3 SKY is as following.
  - Connect charger to USB cradle. (24pin connector)
  - Connect charger to power source. (to wall)
  - Connect USB cable of USB cradle to USB port of desktop PC.
  - Place M3 SKY onto docking cradle then execute Synchronization with Desktop PC.
- The location of USB port can be at the back, front or side of PC and the shape of USB port is identical on Desktop PC and Notebook.
- USB host function is available by putting USB cable into USB port of Cradle.



Connecting to Cradle



## 2. Basic Usage

- Calibration
- Main screen
- Input Screen

# Calibration (1)

- Calibrate the touch screen as shown below, at first time use or when cold (hard) booted.



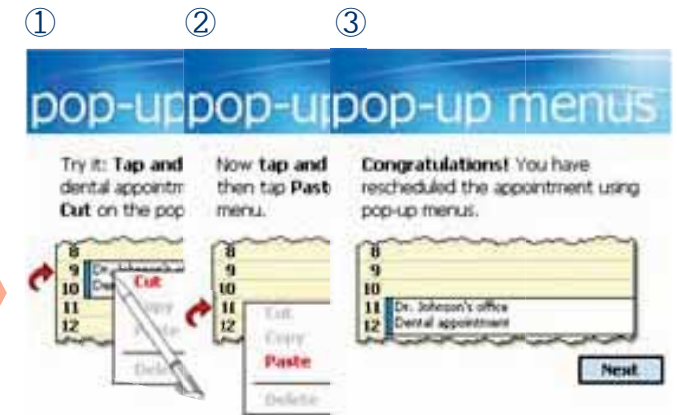
Tap the screen one time with a Stylus pen



Tap the (+) mark with the Stylus pen as it moves around.



You can see the screen how to use the Stylus. If you don't need it, click the Skip.



- 1 Press and hold the Stylus pen on the screen then select the Cut on the pop-up menu.
- 2 Press and hold the Stylus pen like the arrow on screen, Tap the Paste on the pop-up menu.
- 3 When all processes are complete, click the Next.

## Calibration (2)

- Calibration continue....



Set up the standard time zone date, and time.



To set up a password, tap 'Next' otherwise tap 'Skip'.



To set up a password set up a password type and password.



To set up an e-mail account, tap 'Next' otherwise tap 'Skip'.

## Calibration (3)

- Calibration continue....



Choose outlook e-mail to set up an e-mail account and then tap the 'Next'.(POP3/IMAP/Outlook /E-mail)

If you choose outlook E-mail or POP3/IMAP and then tap the 'Next', you should set up it step by step.



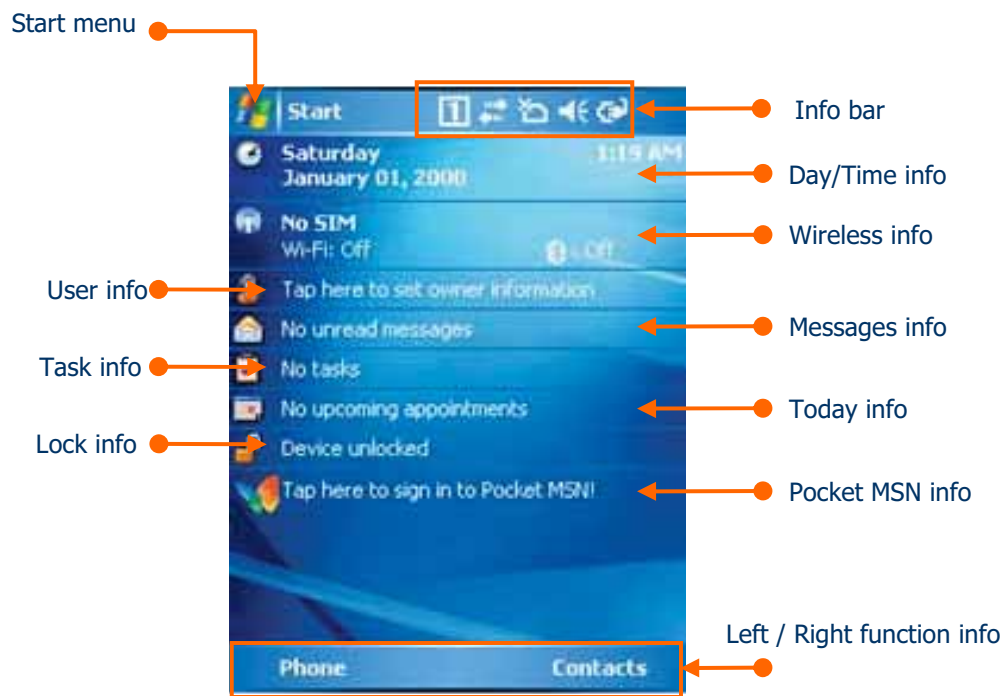
When all processes are complete, tap the screen to start system.



You can see the screen above after the Calibration.

# Main Screen

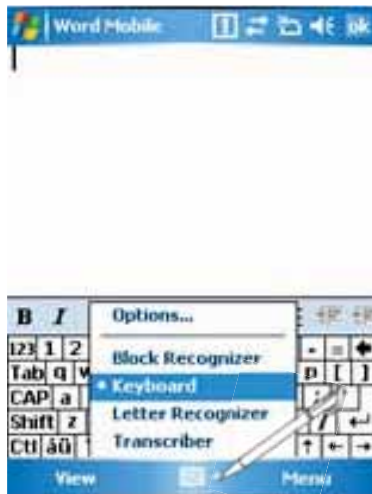
- Main screen
  - Main Screen is set below



Button	function
Start menu	Select the program you want to use.
Info bar	View the power, modem, sound, input mode and connecting view.
Day/Time info	View the current date and time.
Wireless info	View the Wireless power and state.
User info	View the personal information.
Messages info	View the Messages received.
Task info	View the task information.
Today info	View the Today's information.
Lock info	View the screen / Lock information.
Pocket MSN info	View the Pocket MSN information.
Left/Right Function info	View the Left / Right information.

# Input Screen (1)

- To use Input
  - Process this program " Start > Programs > Word Mobile".
- To use the Keyboard Input



Tap the arrow next to the keyboard icon and then select the keyboard on the menu screen as a picture above.



This is the Keyboard Input Screen.

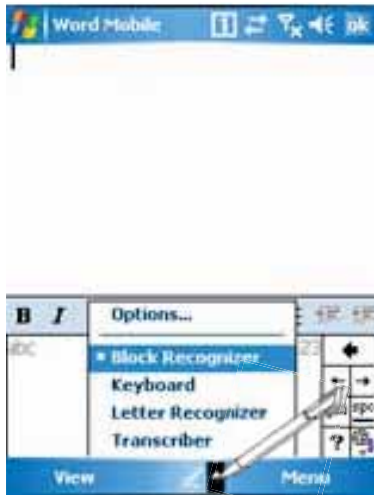


You can input the letter, number and characters when you click the each icon on the keyboard Input screen.

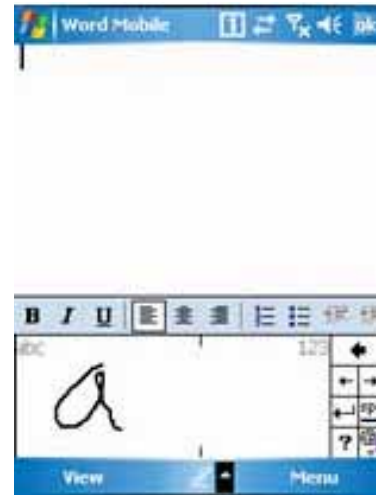


## Input Screen (2)

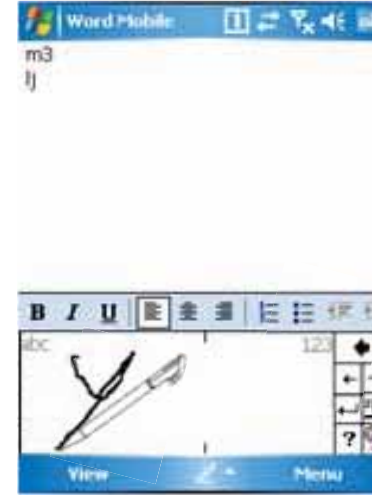
- Usage of Block Recognizer input.



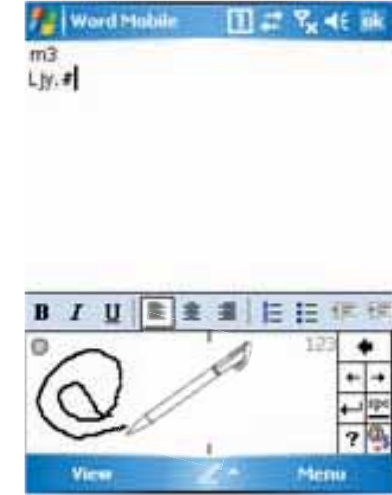
Tap the arrow next to the keyboard icon and then select the Block Recognizer on the menu screen as a picture above



It is the screen of block recognizer input.



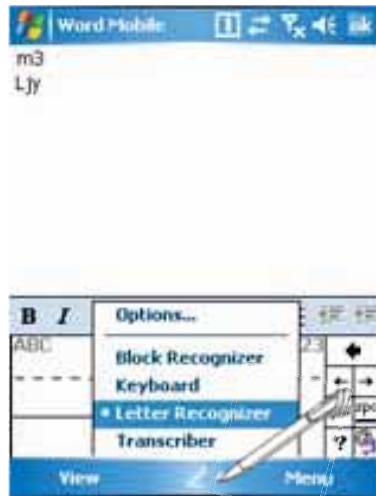
In this input screen you can input letters in 'abc' and numbers in '123' each in the input box seen on the screen.



In the input screen of block recognizer you can input special letters and characters by tapping the input box once.

## Input Screen (3)

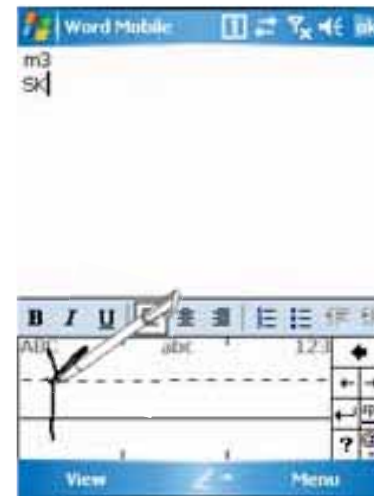
- Usage of Letter Recognizer



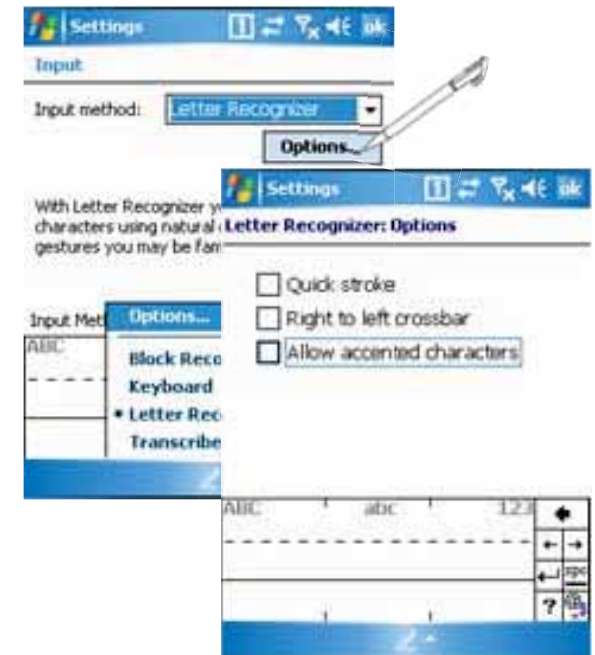
Select the arrow next to the keyboard icon and then Select the 'Letter Recognizer' on the menu screen as the picture above.



This is the 'Letter Recognizer' screen.



In the 'Letter Recognizer' input screen, you can input the capital letters in 'ABC', the small letters in 'abc' and numbers in '123' each in the input box seen on the screen.



Please choose 'Options...' on the input menu. Select 'Letter Recognizer' as input method and then click 'Options...'. Here you can configure the input modes.

## Input Screen (4)

- Using transcriber input
  - Transcriber is a writing recognizer program. It provides you various writing input and input menu.



Select the arrow next to the keyboard icon and then select the Transcriber on the menu like the picture.



This is the Transcriber input screen.

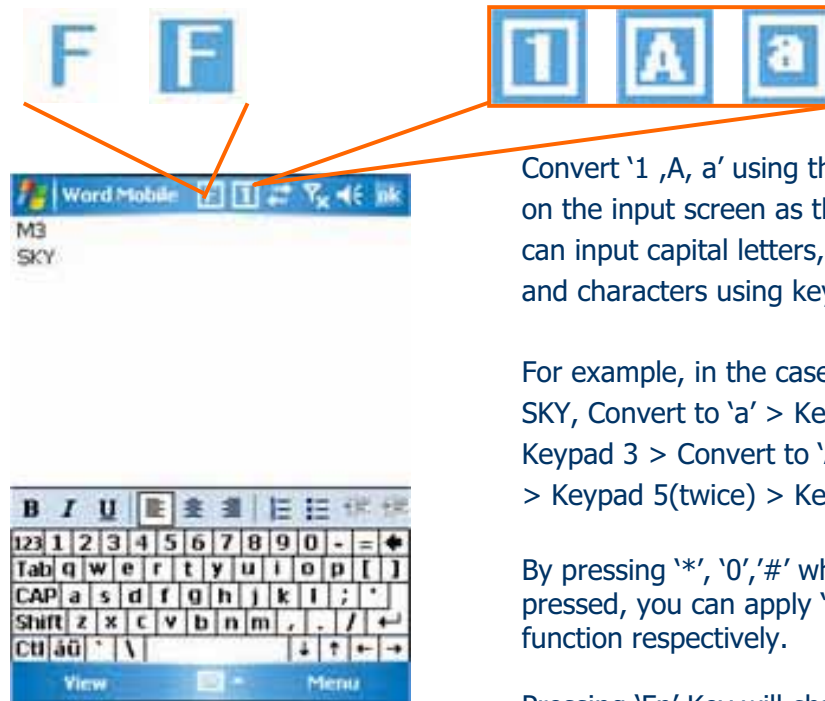
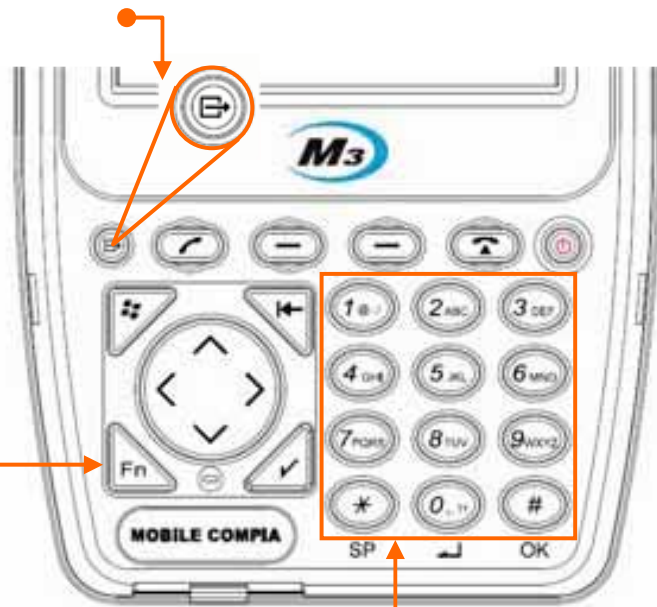


If you input letters, numbers and characters on the screen with the stylus pen, it would be written automatically on the place where the cursor is blinking. You do not have to concern about the input box when using transcriber.

# Input Screen (5)

- Input by using Keypad
  - You can input numbers and letters by using Keypad.

Alphanumeric button



Convert '1 ,A, a' using the input convert button on the input screen as the left picture. Then you can input capital letters, small letters, numbers and characters using keypads.

For example, in the case of inputting the M3 SKY, Convert to 'a' > Keypad 6 > convert to '1' > Keypad 3 > Convert to 'A' > Keypad 7(4 times) > Keypad 5(twice) > Keypad 9 (3 times)

By pressing '\*', '0', '#' while 'Fn' button is pressed, you can apply 'Space', 'Enter' and 'OK' function respectively.

Pressing 'Fn' Key will change the function mode in following order : 'Fn' one time mode -> 'Fn' hold mode -> 'Fn' disable mode



## 3. ActiveSync

- ActiveSync Introduction
- Installing ActiveSync
- Synchronization of Data
- ActiveSync Troubleshooting

# ActiveSync Introduction

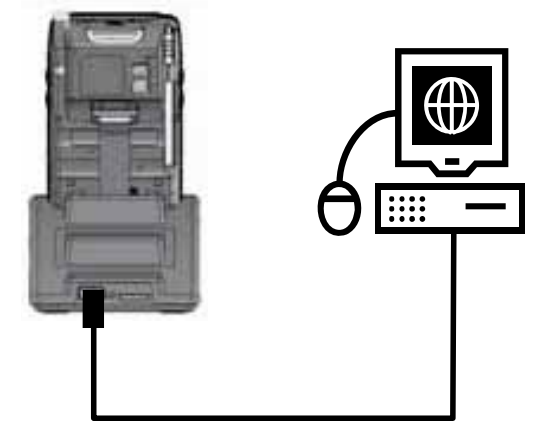
- Sync is an abbreviation of “Synchronization” and refers to the process of making data in PDA and desktop computer to be same by linking both data.
  - Sync is an abbreviation of “Synchronization” and refers to the process of making data in PDA and desktop computer to be same by linking both data. When either PDA or PC modifies data, it updates others to the most recent data.
  - Not all the data is synchronized at same time. It follows the option settings of ActiveSync, provided by Microsoft.
- By linking M3 SKY and computer, you can make data in both devices in the same status (synchronization) or install, copy, move, delete programs for business purpose and others.
- It is compulsory to install this program in order to install business programs, synchronize data, back up and synchronize contact numbers in an address book, etc.



Do not connect USB of Cradle to desktop PC before installing Active Sync to desktop PC.. It may cause a desktop PC cannot recognize PDA since Active Sync contains PDA program driver.

# ActiveSync install / connect

- To install ActiveSync
  - Select the ActiveSync program in the CD provided, and then install it to the computer.
  - Once the installation is complete, connecting window will start. Connect the cradle with PC using USB cable, and then dock the device on the cradle.
  - When the device is recognized on the PC, Connection will be established after assigning the port for it automatically.
- The definition of Partnership
  - It is the process of paring PC with PDA in order to exchange the data each other. Via this process, the data on the PC and on the PDA can be synchronized.
  - ※ The synchronization is available with Outlook 2003 or above version. It is not supported on the outlook express which is provided together with Windows OS.



USB connection to PC



Please re-try the synchronization if connection is disturbed by strong noise or static.

-To install ActiveSync on the host computer, download version 4.1 or higher from the Microsoft web site at <http://www.microsoft.com>. Refer to the installation included with the ActiveSync software.

-Microsoft recommends installing ActiveSync on the host computer before connecting the mobile computer.



# Synchronization of Data

- If you see the Microsoft ActiveSync window in the desktop PC, you can find an option icon. If you click this option icon, taps such as "Sync Options", "Sync Mode", "Rules" will appear.
- "Sync Options" is a menu that you can select an item to synchronize.
  - Contact, Calendar, E-mail, Tasks, Memo, Favorite, Files, Media, etc.
- "Sync Mode" enables you to choose synchronization methods. According to the selected synchronization mode, there are 3 following methods:
  - Continuously while the device is connected: In this mode, if you want to carry out synchronization, connect the device to the desktop computer. ActiveSync will immediately start synchronization and synchronize according to the user's input of changes in a computer or the device.
  - Only upon connection: If you want to carry out the synchronization after the first synchronization on a manual basis, click Sync.
  - Manually: In this mode, ActiveSync will not run automatically. In order to carry out synchronization, click Sync.
- Synchronization is the process of updating M3 and desktop PC after comparing their data. Any files including personal organizer management data, etc in M3 can synchronize with those in the desktop PC.

## **When Troubleshooting the ActiveSync, Check the solutions below.**

- Ensure the correct USB cable is used in the cradle with USB port of the PC.
- Ensure the power input cable of M3 Sky or LCD.
- Please re-try the Synchronization after Soft-reset or Hard-reset. Finish the running program and save the data for sure before resetting.





## 4. How to use Internet

- Via GPRS/EDGE
- Via Wireless LAN
- Browsing the Web Site

## Via GPRS/EDGE (1)

- To connect to the Internet via GPRS/EDGE(1)



Tab 'Start > Settings > Connections'



Select 'Add a new modem connection' of 'My ISP' in the 'Connections'.



Put the name you want into the 'Enter a name for the connection'. Then select the 'cellular Line(GPRS)' in the 'Select a modem'.

- ⚠ GPRS/EDGE service is optional.
- ⚠ It is not available in the device which does not have GSM module installed.

## Via GPRS/EDGE (2)

- To connect to the Internet via GPRS/EDGE(2)



Input the Access point name suitable to the SIM Card / Operator company of Network then Tap the 'Next'.



Tap the 'Finish' after input the User name and password according to the setting. (In some cases, it is required to set IP address at the advanced menu.)



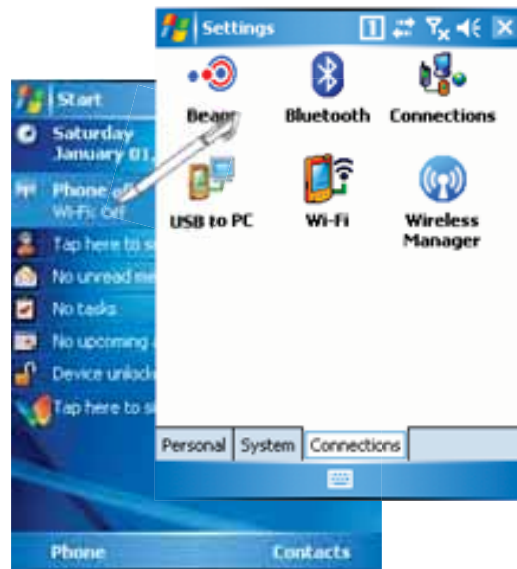
Select the 'Manage existing connections' on the Connections. Choose the ISP which you want to connect to as picture above. \* The saved settings automatically applied at connecting.



You can explore the Internet using GPRS / EDGE connection.

## Via Wireless LAN (1)

- You can use the Wireless Network Via Wireless LAN.
- M3 SKY supports IEEE 802.11b and 802.11g.
- To connect the Wireless LAN (AP must be on and functioning)

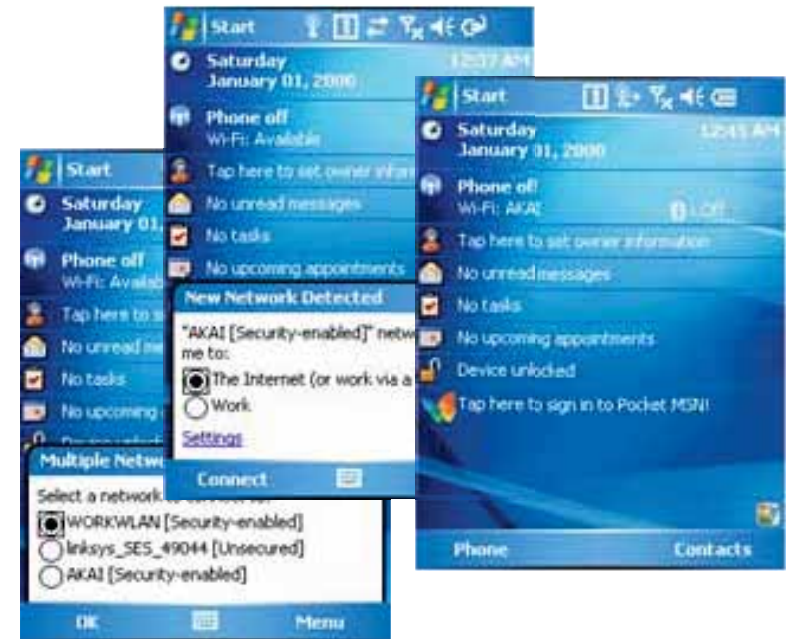


On the Today Main screen, you select Wireless state bar or go to 'Start > Settings > Connections>' Wireless Manager.




Tap the WI-Fi on the 'Wireless Manager' to turn WLAN on.

To connect directly on the Main Screen



When the dialogue box is appeared, Select the AP you want and then, you can connect the Network with it.

 Wireless LAN is optional. You can only use WLAN, when the WLAN module is built in to the device.

## Via Wireless LAN (2)

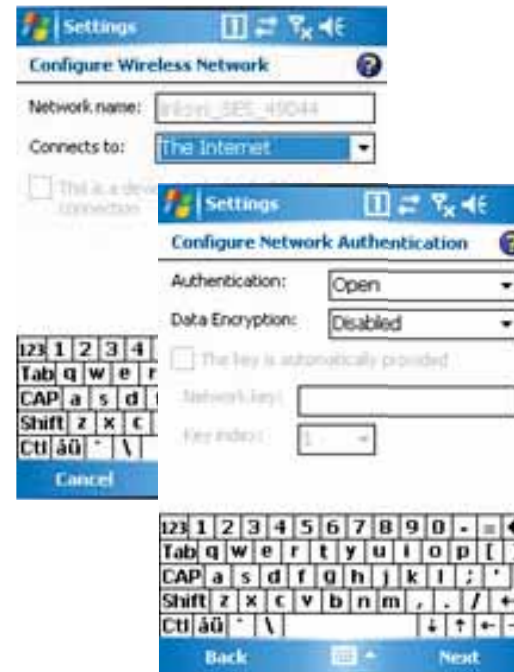
- To connect via Wi-Fi menu



On the settings screen, you select Wi-Fi Icon.  
You can also tap Start > Settings > Connections>Wi-Fi.



Configure the connect type then click the 'Next'.



Configure the connect type then click the 'Next'.  
Input the authentication data then click the 'Next'.



After configure Network authentication, tap the 'Finish'. You can see the wireless Networks available.



## Via Wireless LAN (3)

- Continue from the last page
  - Configure DHCP / Static IP



Tap an adapter to modify setting on the wireless LAN card and select the 'Edit'.



If you configure the IP as DHCP,  
Click the 'Use Server-assigned IP address.'  
If you configure the IP as Static,  
Click the 'Use Specific IP address.'

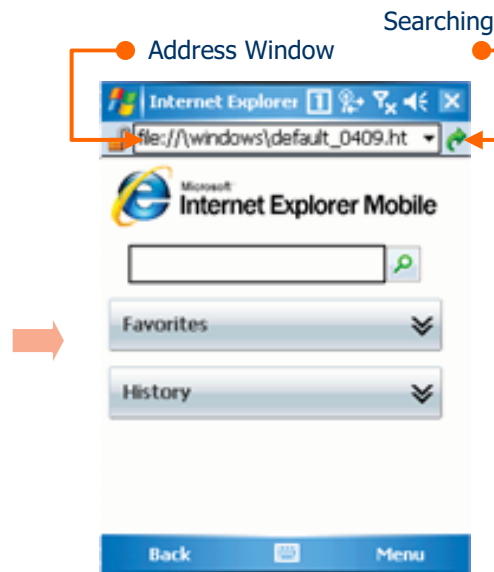
# Browsing the Web Site (1)

- Microsoft Internet Explorer
  - Via GPRS / EGDE , Wireless LAN and Activesync connection, you can browse the web.
  - You can download programs and files by accessing the Internet.

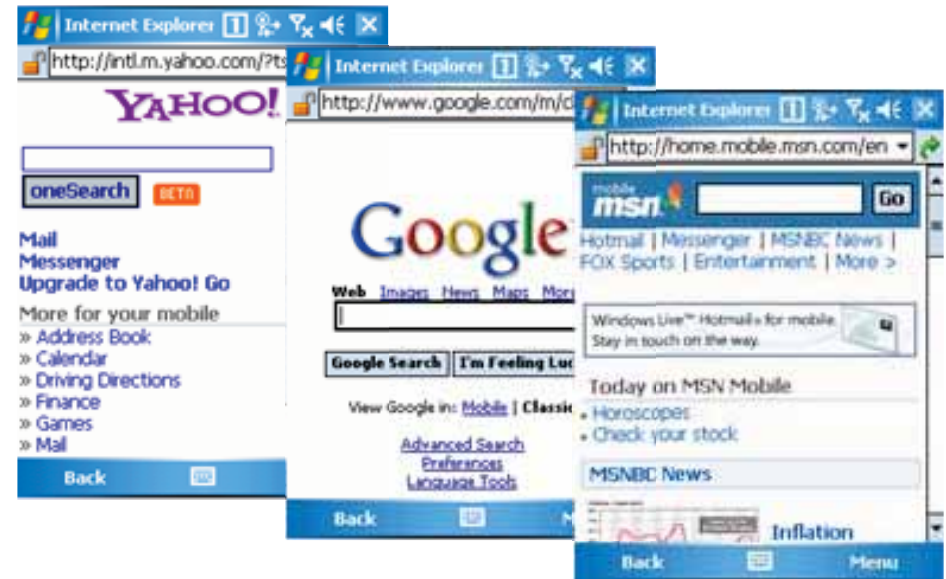
To use the Internet Explorer



Tap 'Start > Internet Explorer



This is the Internet Explorer processing screen.



Input the address you want on the address window in upper of the screen, then click the 'search'. It will try to connect to that web address via Wireless network that is connected.

## Browsing the Web Site (2)

- Continue from the last page.



On the 'Menu > Favorites...' you can see the list of sites that you have saved and browse to it directly. The favorite page is like the picture above.



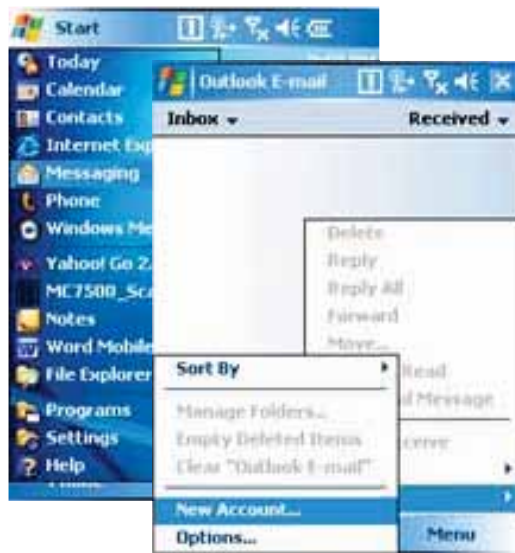
On the Menu > History... You can see the list of sites that you have recently visited. The history page is like the picture above.

⚠ See the 'Start > Help' if you want to know more about how to use the Internet Explorer



## Browsing the Web Site(3)

- To set up an e-mail account



Process the 'Start > Messaging'. Select the 'Menu > Tools > New Account...' in the Outlook E-mail box.



Set an E-mail provider for 'other' then tap 'Next.'



Input the E-mail address on the Enter e-mail address, then tap 'Next'.



When the Status is for completed, tap the 'Next'.

## Browsing the Web Site (4)

- Continue from last page



Set an E-mail provider for 'other' then tap 'Next'.



Select the Account Type and put the Name then tap 'Next'.



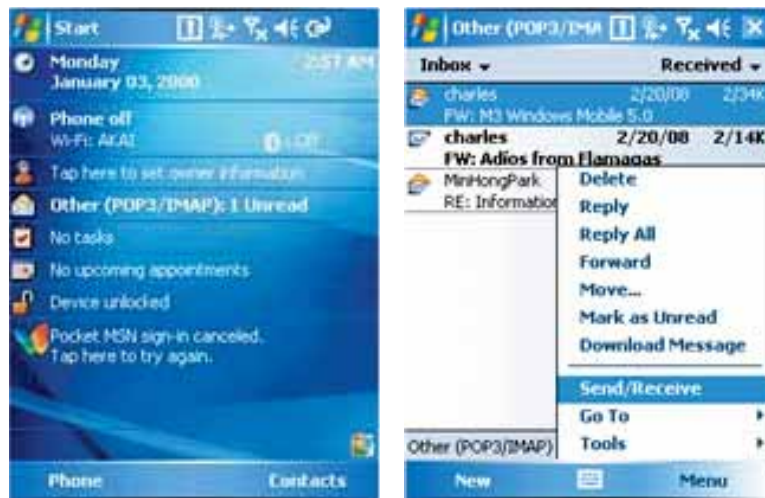
Input the 'Incoming mail, Outgoing mail, Domain' then select 'Finish'.  
\* For detailed setting menu, please click 'Options'.



After finishing the setting you can send and receive E-mail using the e-mail account.

## Browsing the Web Site(5)

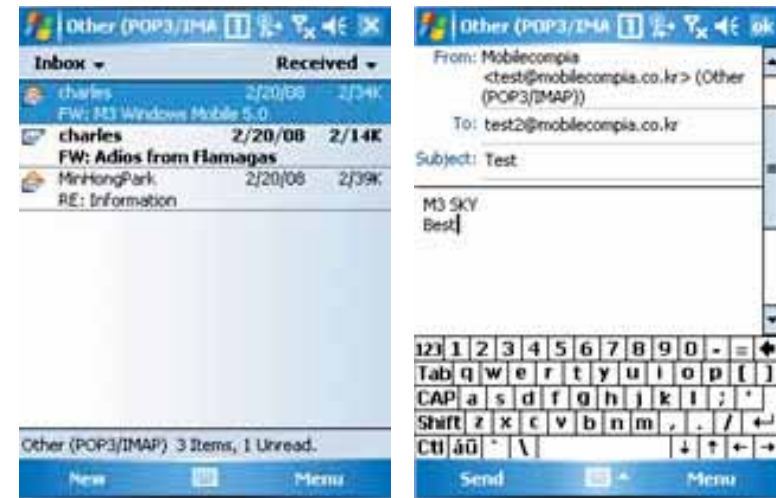
- To send and receive an E-mail



< To receive an e-mail>

Select the 'Message' on the 'Today'

Select the 'Send / Receive' in the 'Menu' and check the received mail.



<To send an e-mail>

After process the 'Message' program , select the 'New' .

You can send an e-mail when you select the 'Send' after writing a new e-mail.

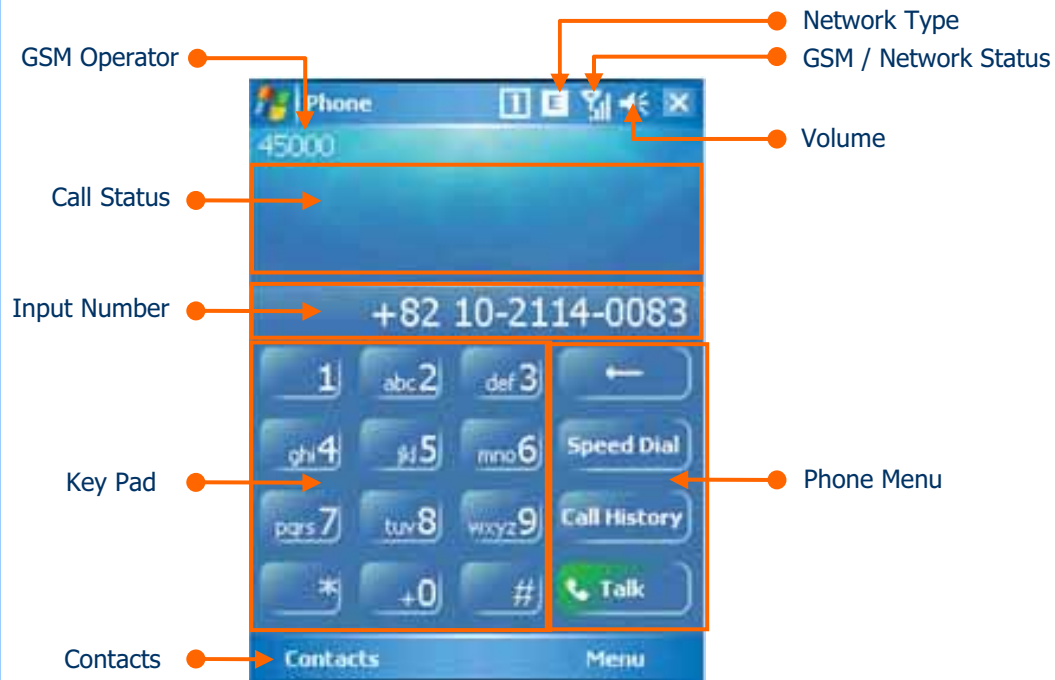


## 5. How to use the Phone

- Init Screen
- Phone Control
- Phone call and receive
- Phone book
- SMS send and receive
- Phone functions
- Phone setting

# Init Screen

- Phone Main Screen



GSM Operator	It indicates the current Network Provider.
Call Status	It shows Call Status.
Input Number	It shows Inputted Numbers.
Key Pad	It is used to dial the number and can be used as speed-dial.
Contact	It shows Phone Book Dialog.
Network Type	It displays the availability of GPRS and EDGE connection.
GSM/Network Status	It indicates the signal strength.
Volume	It is Volume on/off and vibrate
Phone Menu	Talk, End, Speed Dial, Call History, etc menu...

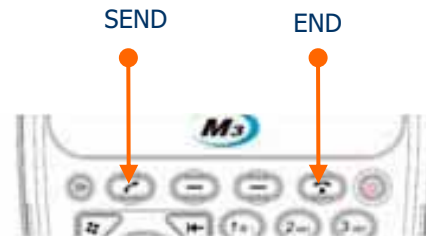
# Phone Control

- Phone Program On/Off



You can turn on and off phone in Wireless Manager

- Phone Call Send/End



Select the SEND and END button like the picture above to start and finish the Phone program.



Tap the Phone button on the left bottom of the Today Screen and then you can process the Phone program. Also you can finish the program using the X button.



# Phone Call and Receive

- Phone Call



To make a call:  
1. Input number via program keypad or device keypad.  
2. Make a call by pressing the 'Talk' button on the program, or pressing 'SEND' button on the device.

To hang up:  
Press the 'END' button on the program or on the device.

- Phone Receive

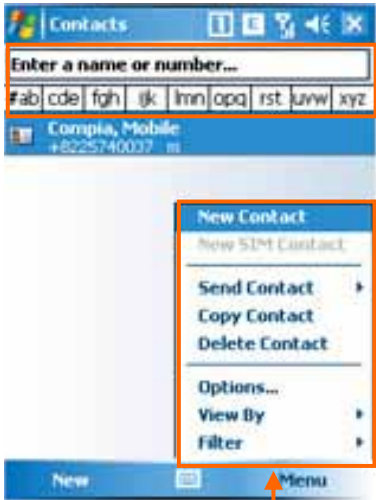


When you get the Incoming Call, you can receive the phone call tapping the Answer button. If you don't want to receive it just tap the Ignore button.

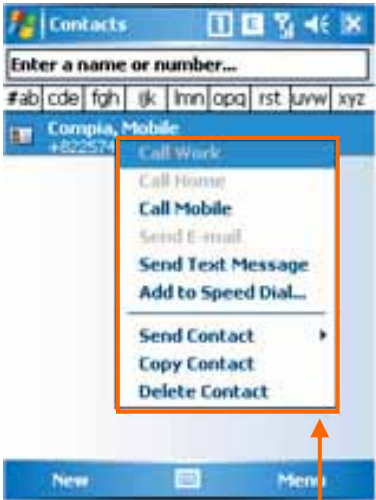
# Phonebook

- To use Phonebook

Searching  
A name or  
Number.



Contacts Menu



Contacts Option

Searching Contacts		You can search the contacts by writing the name and number or tapping.
Contacts Menu	New Contact	Input the new contact
	New SIM Contact	Input the contact to the SIM Card.
	Send Contact	Transmit the information of Contact by BEAM or SMS.
	Copy/Delete	Copy or delete the Contact
	Options	Set the Options for Contact.
	View By	See the Contact by Type ( Name , Company, Number ... )
	Filter	Filter the information you want.
Contacts Option	Call W/H/M	Call by the number on the Contact.
	Send E-mail	Send an E-mail by the address on the Contact.
	Send SMS	Send SMS by the number on the Contact.
	Add to Speed Dial	Add the number on the Contact to Speed Dial.
	Send Contact	Send the information of Contact by BEAM or SMS.
	Copy/Delete	Copy and Delete the Contact.

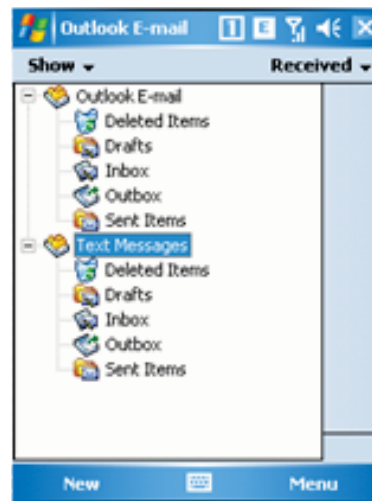


# SMS send and receive(1)

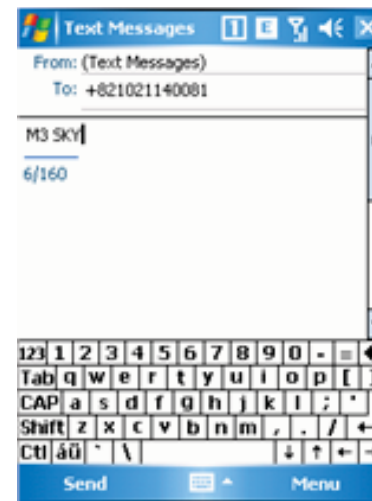
- How to send SMS



Select 'message information' menu on the main screen to send SMS. You can also send SMS by selecting 'SMS send' menu on Contacts or any other applications.



Change to the 'Text Messages' on the Message Program like the picture above and tap the 'New' on the bottom.



Input the phone number and message. Tap the send to send SMS.



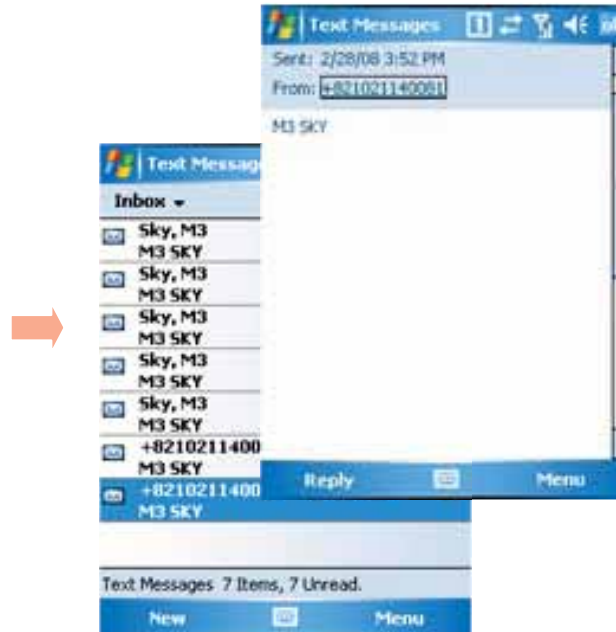
You can see the pop-up screen when SMS is sent successfully.

## SMS sent and receive (2)

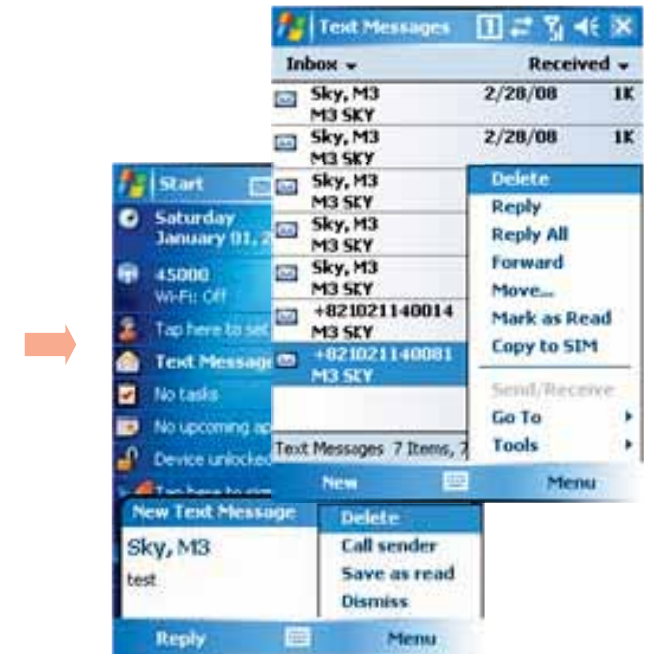
- How to receive SMS



When connected to the GSM network, new message arrival will be alerted a picture above.



By tapping one of the received messages, the content will be displayed on the separate window as picture above.



Controlling received SMS can be done by using the menu on the 'New Text Message' alert window or on the Text Messages program.

# Controls while on the phone

- Functions while on the phone



You can use various functions when you select the button on the bottom while talking on the phone.



Keypad	Change to Mode available to input the Number on the screen.
Mute	Setting for receiver not to hear my voice while on the phone.
Hold	Hold for a moment while on the phone
Contact	Move to Contact
End	End phone call

Featured functions while on the phone



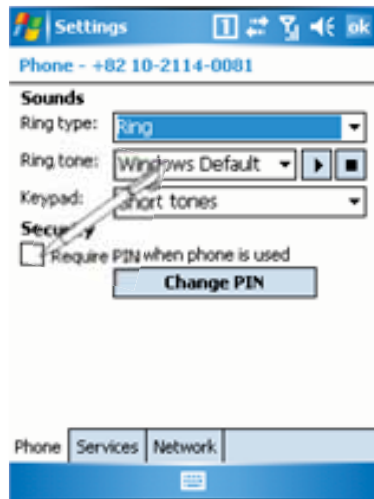
You can see the list of recent calls by selecting 'Call History'.



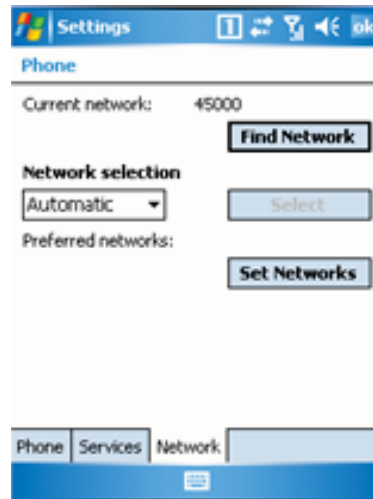
You can take a memo While talking on the phone by selecting the Note.

# Phone setting

## ● Phone setting



Tap the 'Start > Settings > Personal tap > Phone' and in that menu you can set the Security and Sounds. Check the 'Require PIN when phone is used' check box when PIN lock is required.



Tap the 'Start > Personal Tab > Phone > Network' to set an information related to the Network. ( Change the Network ..)



Tap the 'Start > Personal Tab > Phone > Services Tab ' to set an information related to the Service. ( In the Network or SIM )

Call Barring	Block the calling to the specific number.
Caller ID	Turn on or off the Caller ID function. If it is enabled, your number will be shown to the receiver.
Call Forwarding	You can forward the incoming call to the other number.
Call Waiting	You can receive another call while you are talking on the phone.
Voice Mail Text Messages	Set the SMS Service Center number and Voice Mail number.
Fixed Dialing	Limit the available phone functions using PIN2.

Description of Service Menus

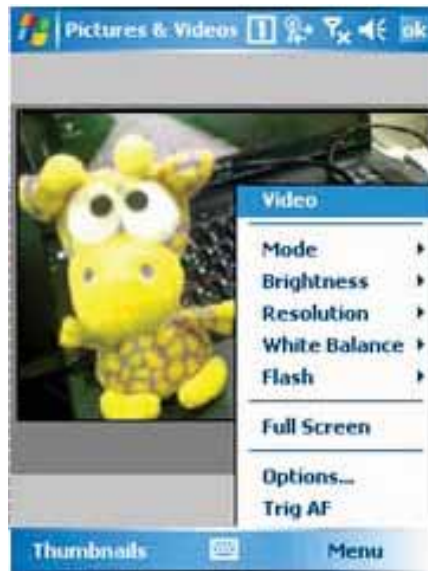
## 6. Usage of Device

- Camera
- Bluetooth
- IrDA
- GPS
- Scanner



# To use the Camera (1)

- Notice before taking pictures
  - The camera equipped with the M3 Sky is supported 2 mega pixels.



Camera Program Processing Screen

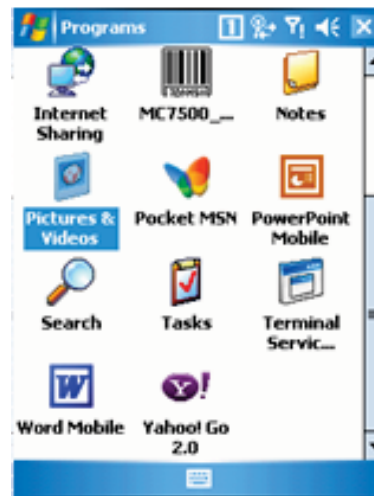
Function	Still	Video	Comment
Mode	Normal, Burst, Timer	N/A	Setting for taking photo
Brightness	-3, -2, -1, 0, +1, +2, +3		Setting for Brightness
Resolution	QCIF, QVGA, CIF, VGA ,SVGA, SXGA, UXGA	QCIF, QVGA	Setting for size
White Balance	Automatic, Sunny, Cloudy, Fluorescent, Incandescent		Setting for White balance
Flash	Flash ON, Flash OFF		Setting for Flash ON/OFF
AF	Trig AF		Setting for Auto Focus

- ⚠ Camera is optional. On the device with no built-in camera, Camera function can not be used.
- ⚠ QCIF(176x144), QVGA(320x240), CIF(352x288), VGA(640x480), SVGA(800x600)  
SXGA(1280x960), UXGA(1600x1200)



## To use the camera (2)

- To process the camera program
  - You can process the camera program when you tap the camera button or tap the camera icon on the 'picture or video'.



Select the 'Start > Programs > Pictures & Video'.

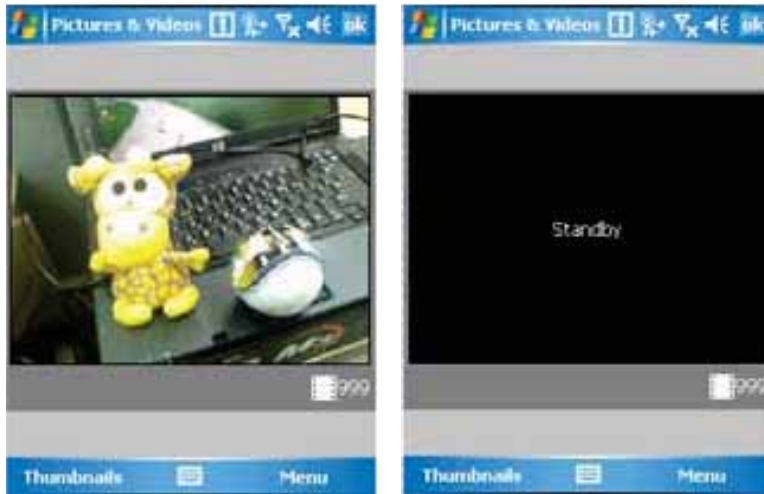


You can process the camera program when you select the camera icon on the Picture & Video or select the camera icon in the menu.

⚠ Tap the 'Menu > Options ... > Camera Tab' and then you can set the route of the storage memory , name and quality. You can set the Video on the Video Tab.

## To use the camera (3)

- Taking a Still photo



Execute the camera program first. Move around to focus the desired item.

Finally press the camera button to take a picture.

After executing the camera program, Preview mode will be changed to standby mode after certain amount of time.

In order to start Preview Mode again, just tap the screen or press the camera button.



After taking a picture, the captured image will be displayed on the screen.

If you want to execute the camera program, tap the camera button at the bottom or click the camera icon on the left of window.

You can see the list of pictures taken previously by tapping 'Thumbnails' in the Camera shooting mode.



## To use the camera (4)

- Taking videos



If you want to take a video, select 'Menu > Videos' after executing the camera program.



While taking a video, you can either stop (by tapping stop button) or pause. (by tapping pause button)



If you want to watch the video taken, Select the 'Thumbnails' first to see the list of video files available. When you select the video you want, you can play the video recorded.

# Bluetooth Communication(1)

- Bluetooth On / Off



On the 'Today Main Screen', select the Wireless State bar or Tap 'Start > Settings > Connections and select 'Wireless Manager'.



To turn on/off Bluetooth, tap the Bluetooth on the Wireless Manager



The status of Bluetooth can be seen on the wireless status bar on the main screen.

- ⚠ Bluetooth is optional. Device without built-in Bluetooth can not use Bluetooth service.
- ⚠ Bluetooth support the transmission and reception of files between the serial connecting service and Windows Mobile device.

# Bluetooth Communication(2)

- Setting the Bluetooth
  - On the Bluetooth setting screen, you can set the Mode, connecting to BT device and COM settings



You can set the Bluetooth mode and establish connection when you tap the 'Bluetooth' icon on the Start > Settings > Connections.



In the Mode tab, you can turn on/off Bluetooth and make visible or invisible the device from outside.



In the device tab, you can search and connect to other Bluetooth devices.



In the COM Ports tab, you can set incoming Port and outgoing Port.

## Bluetooth Communication(3)

- To connect the Bluetooth
  - you can establish the connection by searching, matching pin code and selecting the service.



You can search the Bluetooth device available when you select the 'Add new device...' on the Device Tab. Select a device to connect with and tap 'Next'. Also you can select the 'Refresh' button if there is no device available.



Enter a Passcode to establish a secure connection. The passcode can be fixed one or the one which is negotiated between two parties in before hand.



It shows the service available on the Bluetooth device.



It shows the registered devices. To add more device, please tab 'Add new device'.

## Bluetooth Communication(4)

- How to make the serial connection via Bluetooth
  - It is possible to assign the registered device to the COM port.



Once the device is registered, please tap 'COM Ports' tab and then select 'New Outgoing Port'.



Select the device you want to add and tap 'Next'.



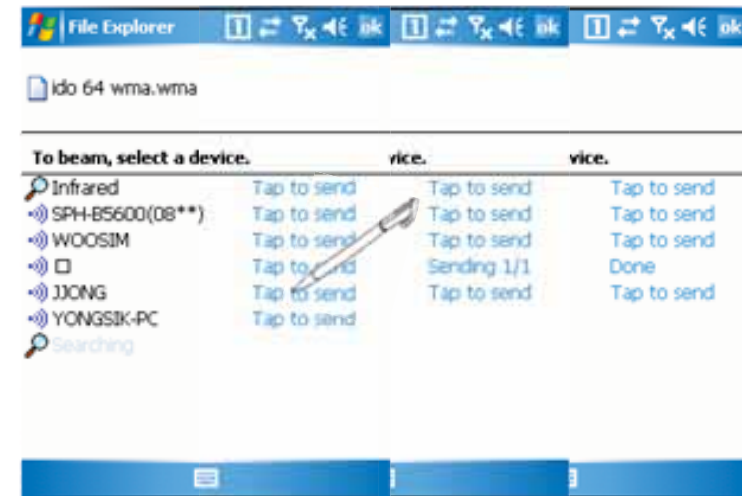
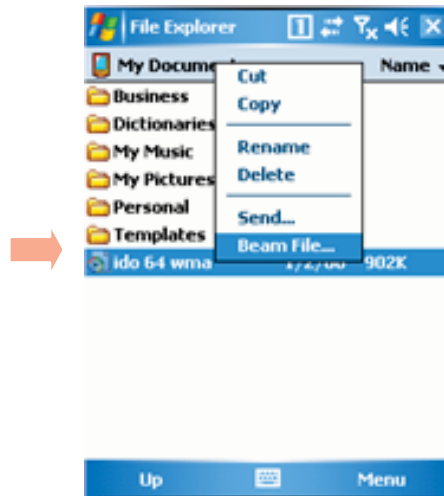
Select the port which is available, and then tab 'Finish'.



Once the connection is made, you can use the available service.

## Bluetooth Communication(5)

- Transferring files via Bluetooth connection.
  - It is possible to transfer files between Windows Mobile devices via Bluetooth.



In order to transfer files via Bluetooth connection, please go to 'Start > Settings > Connections > Beam' and then Check the 'Receive all incoming Beams'.

Select the file you want to transfer in the File Explorer. Press the file name long and tab 'Beam File'.

By tapping 'Beam File', the list of available Bluetooth devices shown. Please choose the device to transfer the file to.



# IrDA Communication

- To connect via IrDA

M3 Sky can communicate with desktop, notebook, pocket PC as well as other PDA that has OBEX protocol for the IrDA communication.

**To use infrared communication**

- Locate Infrared communication port to be in series with an infrared (IrDA) port with other device.
  - Press a quick link icon > Infrared communication menu.
  - Infrared communication program is started and you can exchange data.
  - If you want to have a serial communication with the device like printer, it is possible by connecting the COM Port.
- ※ It is advised to communicate within the shortest distance.  
Shorter distance makes data transmission faster.



Connecting to IrDA Printer

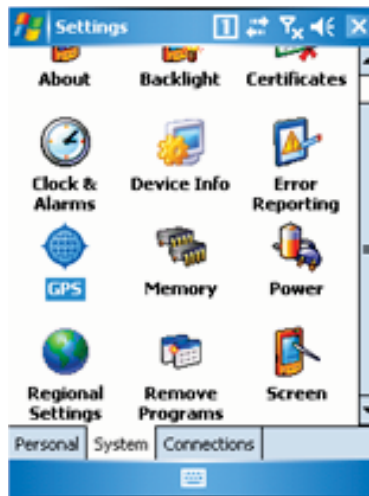


File transmission between PDA

⚠ IrDA port is optional. Device without IrDA port can not use this feature.

# To use the GPS(1)

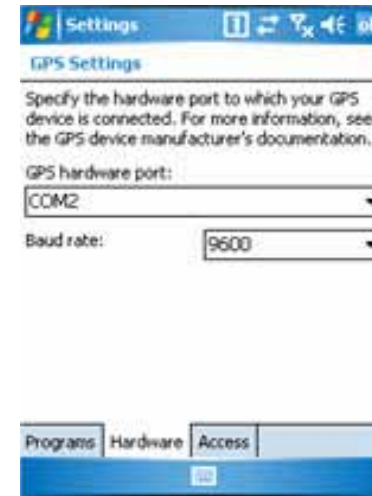
- To set the GPS
  - Tap the 'Start > Settings > System Tab > GPS' and then you can set the information related to the GPS.
  - You don't have to set additional information when there is a single program which uses GPS data. When there are more than one program which use GPS data, you need to set the program port and hardware port required for each program.




Select the GPS on the System Tab.



Set the GPS Program Port which is not yet used.



Set the Hardware port of the device.  
GPS hardware port for M3 sky is COM2 and with baud rate of 9600.

 GPS is optional. GPS feature is not available on the unit with no GPS module integrated.



## To use the GPS(2)

- To Connect the GPS
  - When there is a single GPS program, please use the GPS hardware port (COM2). When there are more than one GPS program, please use the pre-defined GPS program port.



Execute the GPS program you want.



Set the COM Port and Baud Rate.



It is available to use various application using GPS like searching the current location.

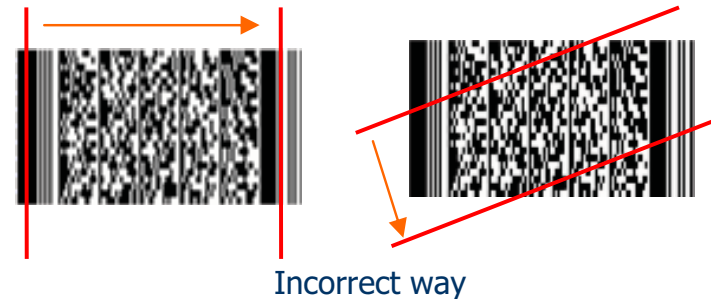
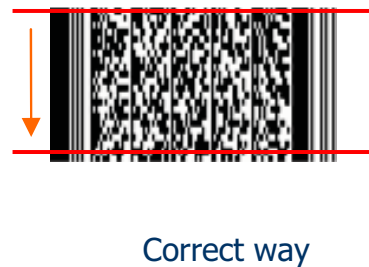
 Sample GPS map is not provided by MobileCompia

## To use the scanner

- How to use scanner
  - Usage of 1D Scanner



- Usage of 2D Scanner



- ⚠ Scanner is optional. You can not use scan feature with no scanner enabled device.
- ⚠ 2D Barcode Scanner is optional. Only with 2D Barcode scanner enabled device, you can do 2D barcode scan.



## **M<sub>3</sub>** in the World



[www.mobilecompia.co.kr](http://www.mobilecompia.co.kr)

copyright ©Mobile Compia Corporation 2008 All Right Reserved

## **Federal Communications Commission (FCC) Interference Statement**

The device complies with Part 15 of FCC rules. Operation is subject to the following two conditions:

- This device may not cause harmful interference.
- This device must accept any interference received, including interference that may cause undesired operations.

This device has been tested and found to comply with the limits for a Class B digital device pursuant to Part 15 of the FCC Rules. These limits are designed to provide reasonable protection against harmful interference in a residential installation. This device generates, uses, and can radiate radio frequency energy, and if not installed and used in accordance with the instructions, may cause harmful interference to radio communications. However, there is no guarantee that interference will not occur in a particular installation.

If this device does cause harmful interference to radio/television reception, which can be determined by turning the device off and on, the user is encouraged to try to correct the interference by one or more of the following measures:

- 1** Reorient or relocate the receiving antenna.
- 2** Increase the separation between the equipment and the receiver.
- 3** Connect the equipment into an outlet on a circuit different from that to which the receiver is connected.
- 4** Consult the dealer or an experienced radio/TV technician for help.

### FCC RF Exposure Information

**WARNING!** Read this information before operating the phone.

In August 1996, the Federal Communications (FCC) of the United States, with its action in Report and Order FCC 96-326, adopted an updated safety standard for human exposure to radio frequency (RF) electromagnetic energy emitted by FCC regulated transmitters. Those guidelines are consistent with the safety standard previously set by both U.S. and international standards bodies.

The design of this phone complies with the FCC guidelines and these international standards.

### CAUTION

Use only the supplied and approved antenna. Use of unauthorized antennas or modifications could impair call quality, damage the phone, void your warranty and/or result in violation of FCC regulations. Do not use the phone with a damaged antenna. If a damaged antenna comes into contact with skin, a minor burn may result. Contact your local dealer for a replacement antenna.

### Body-worn Operation

This device was tested for typical body-worn operations with the back of the phone kept 0.79 inches (2cm) between the user's body and the back of the phone. To comply with FCC RF exposure requirements, a minimum separation distance of 0.79 inches (2cm) must be maintained between the user's body and the back of the phone. Third-party belt-clips, holsters, and similar accessories containing metallic components should not be used. Body-worn accessories that cannot maintain 0.79 inches (2cm) separation distance between the user's body and the back of the phone, and have not been tested for typical body-worn operations may not comply with FCC RF exposure limits and should be avoided.