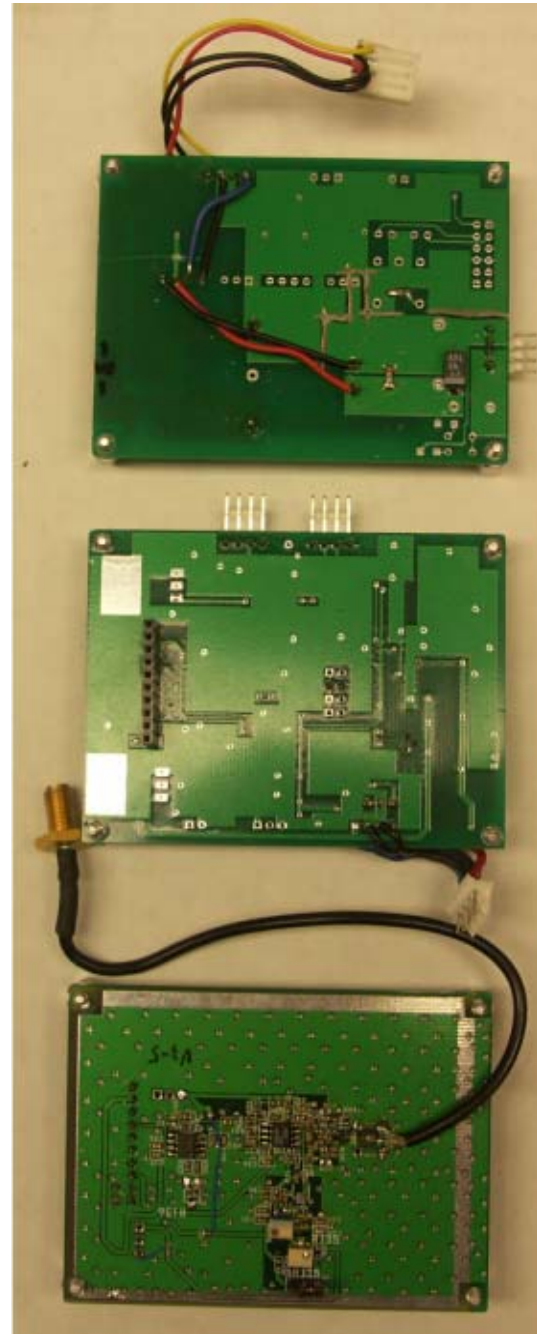


1. Internal Photos

1.1. Receiver circuitry



Fig.1 (a) Top view of receiver PCBs



(b) Bottom view of receiver PCBs

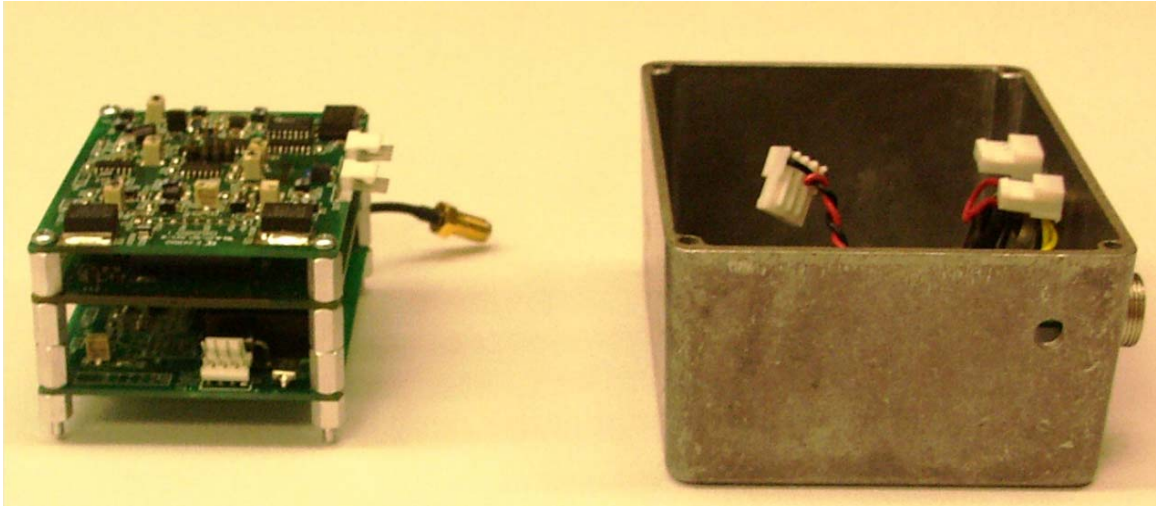


Figure 2 PCBs stacked up for installation

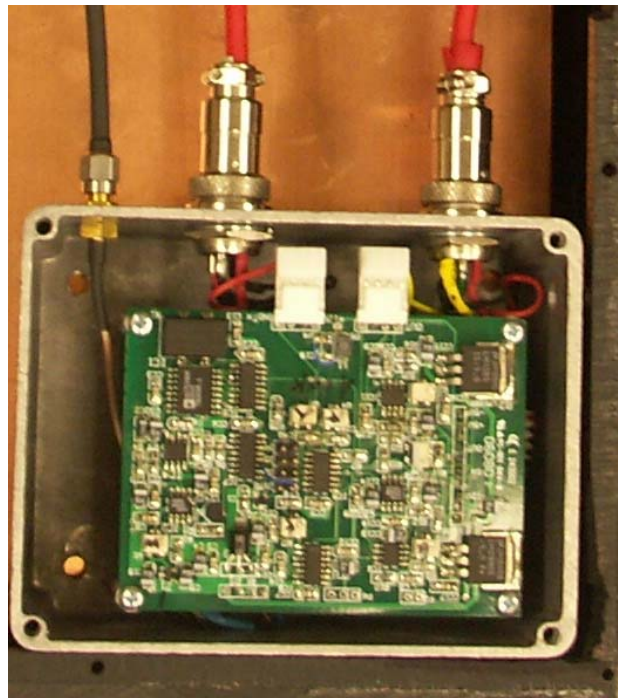


Figure 3 down side view of the stacked PCBs

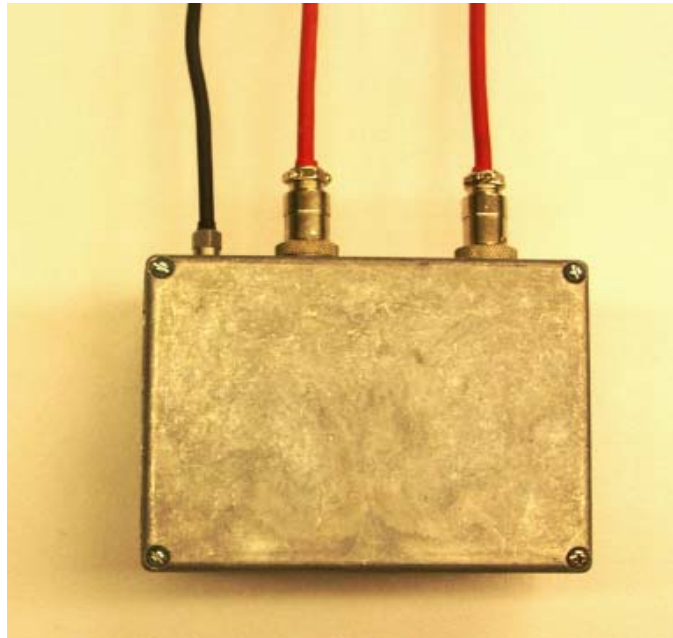


Figure 4 Circuit boards installed in the aluminum box

1.2. Transmitter circuitry

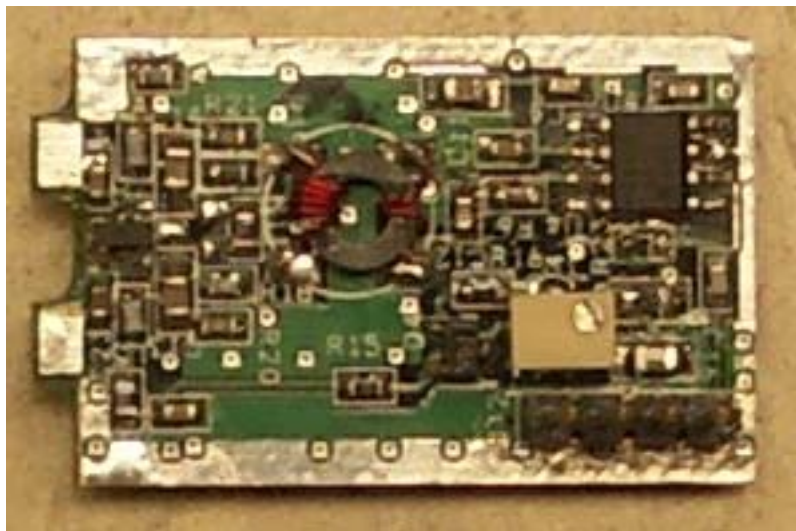


Figure 5 top view of the transmitter board

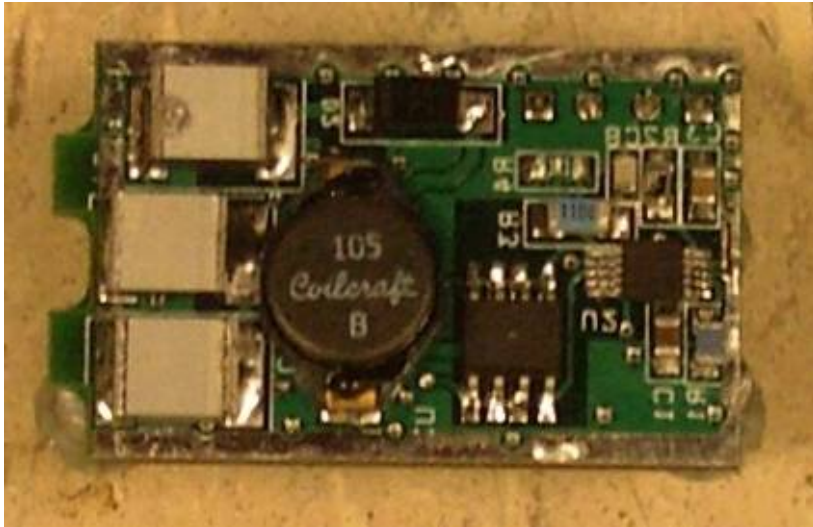


Figure 6 Bottom view of the transmitter board

1.3. Antenna setup

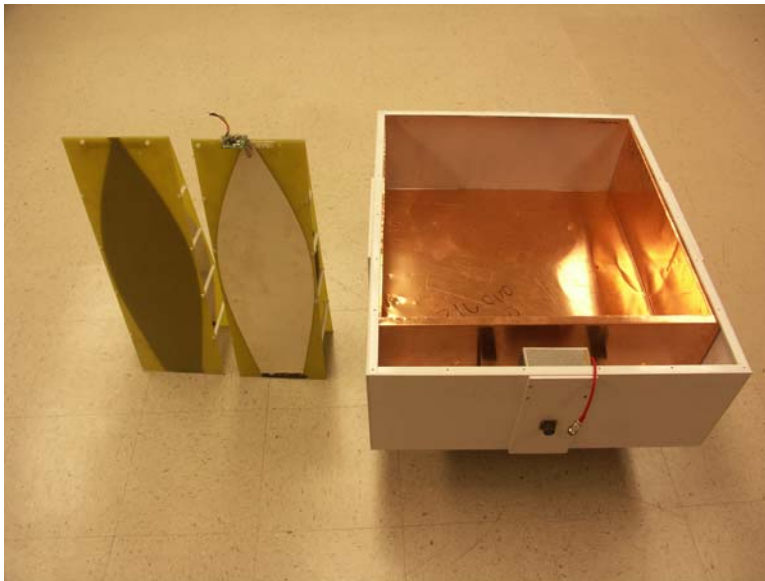


Figure 7 TEM horn antennas and the enclosure



Figure 81 TEM horn antennas installed in the box

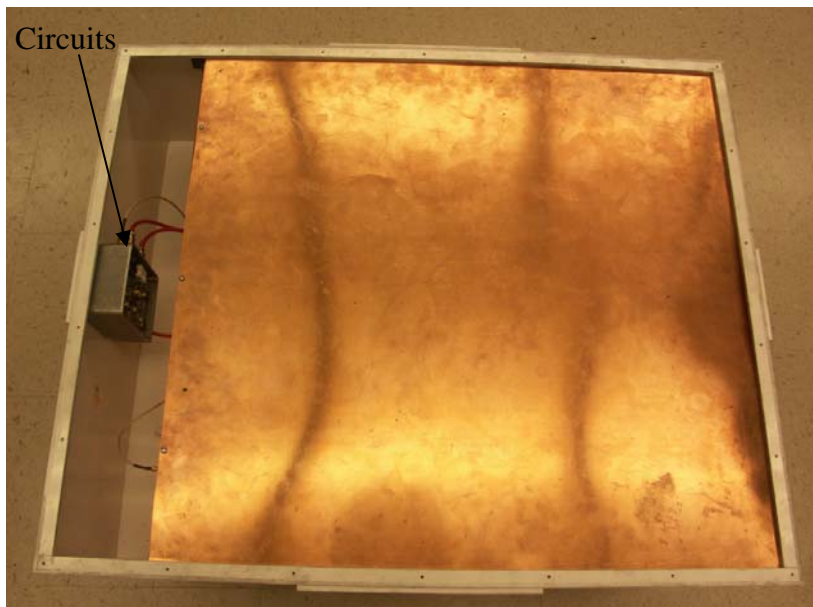


Figure 9 Antenna shielded in a copper box