

1. Internal Photos

1.1. Receiver circuitry



Fig.1 Top view of receiver PCBs

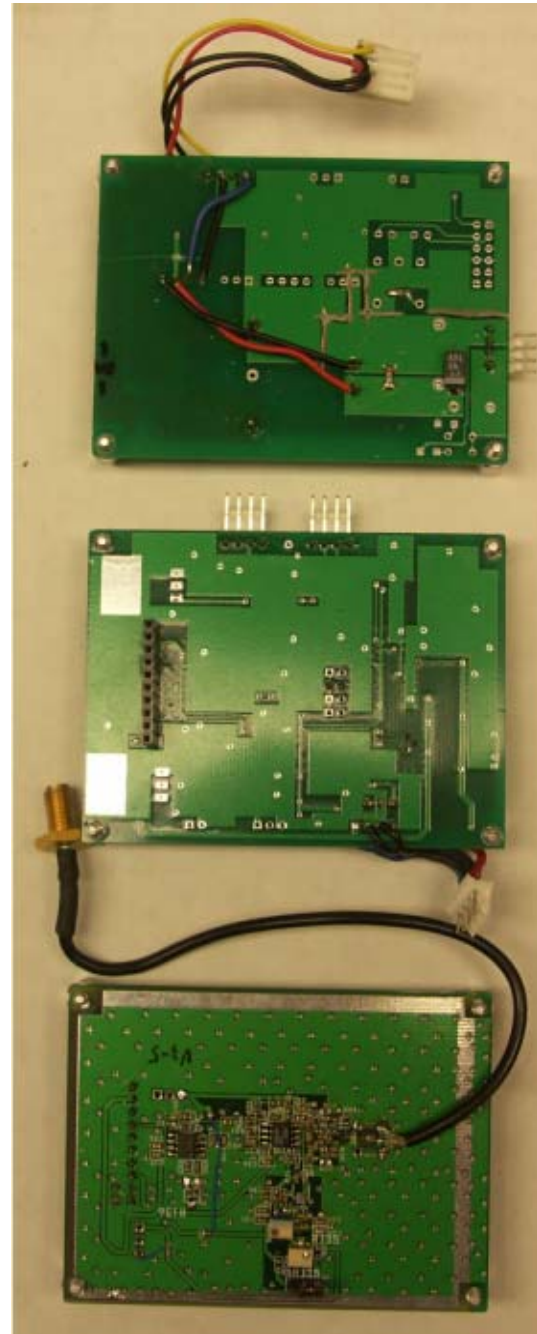


Fig.2 Bottom view of receiver PCBs

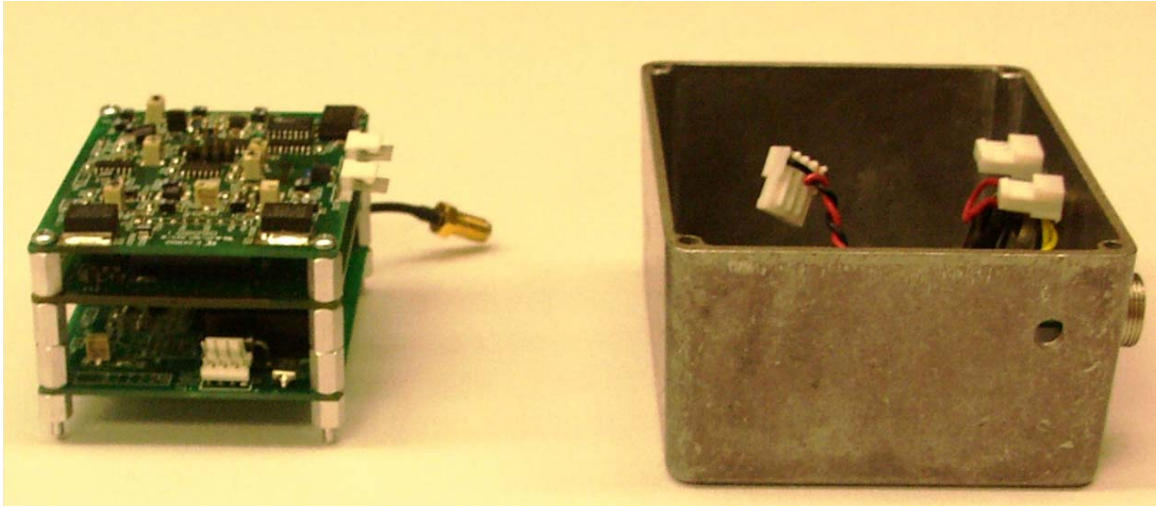


Figure 1 PCBs stacked up for installation

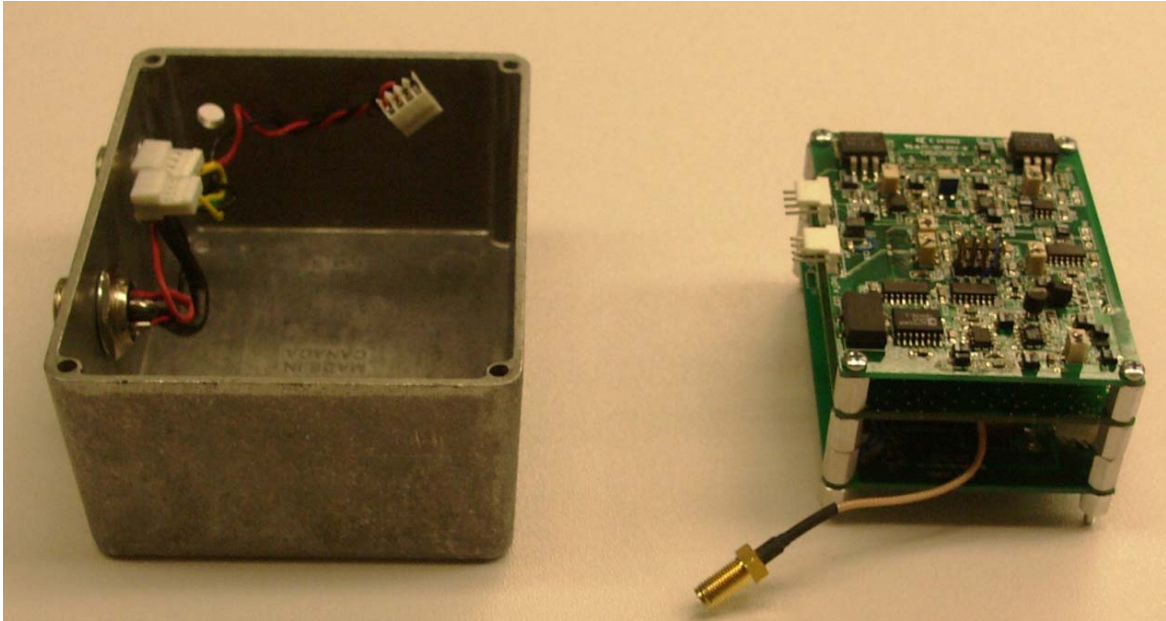


Figure 2 Right hand side view of the stacked PCBs

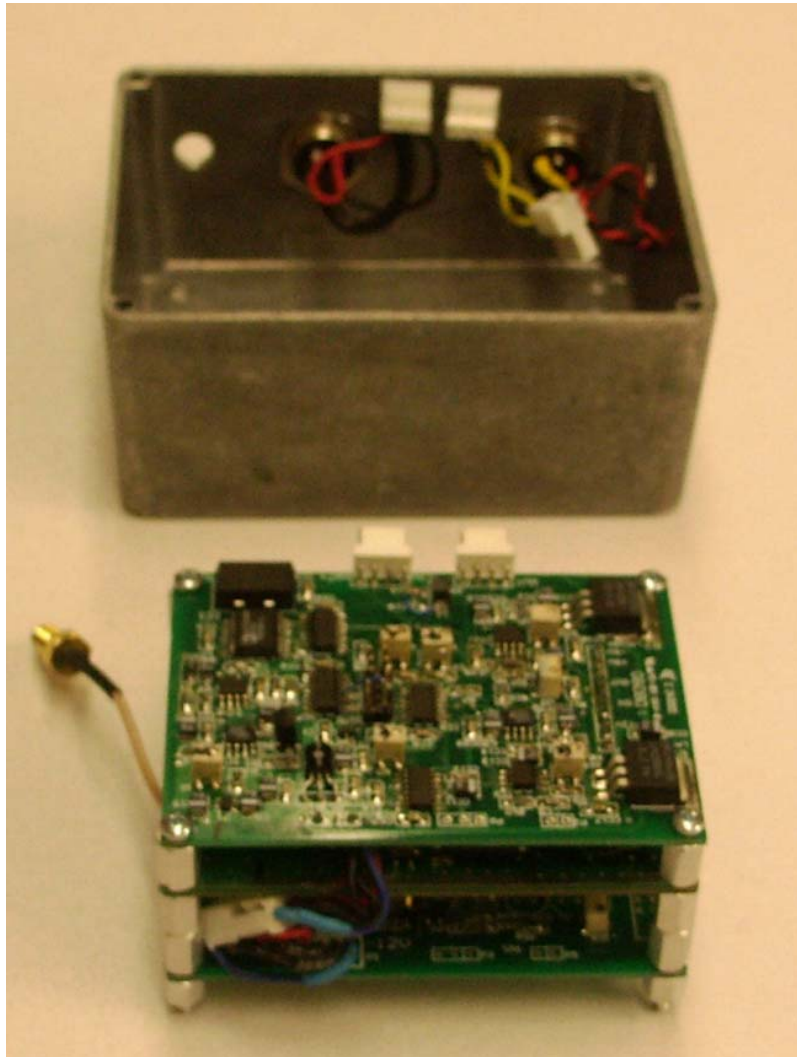


Figure 3 up side view of the stacked PCBs

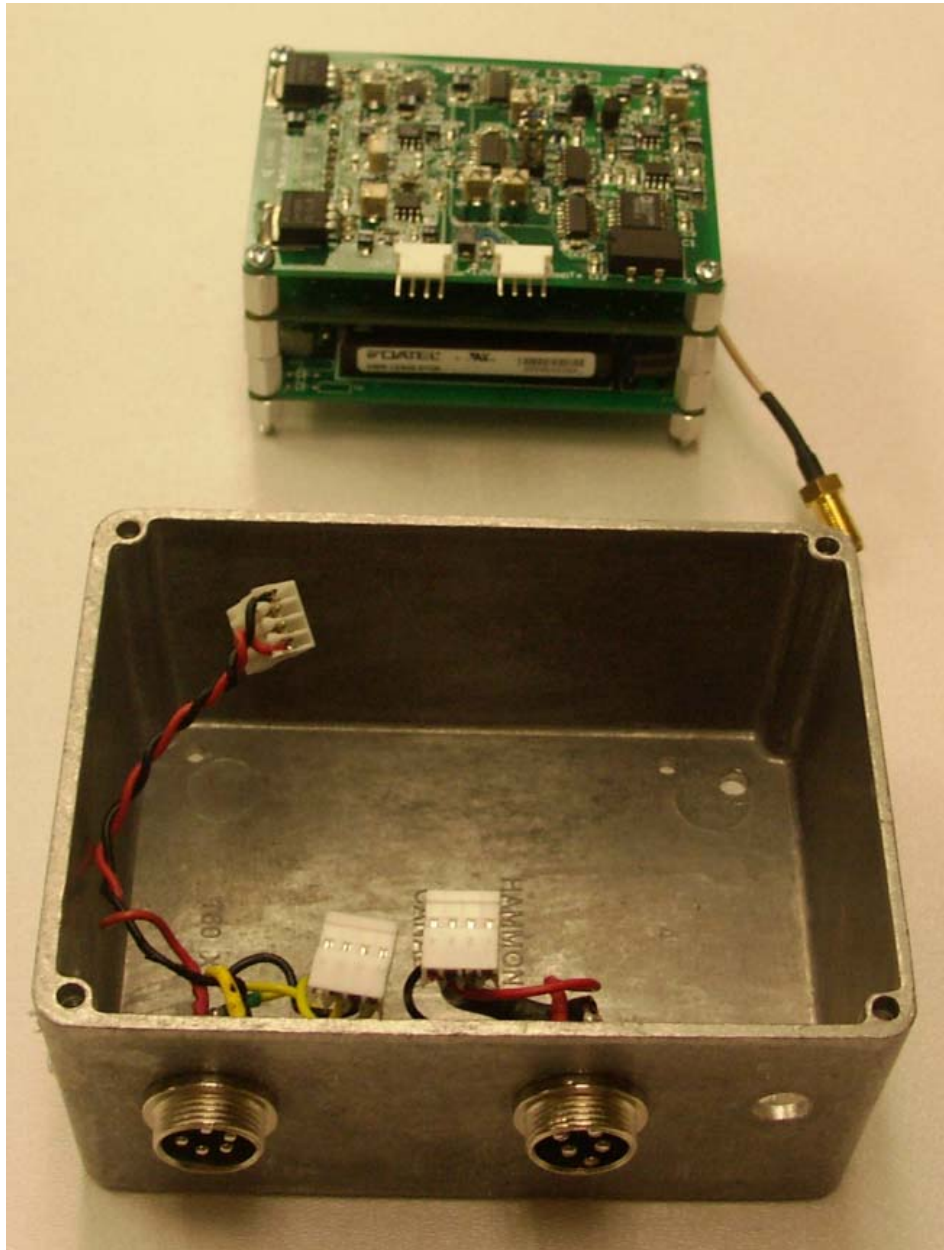


Figure 4 down side view of the stacked PCBs

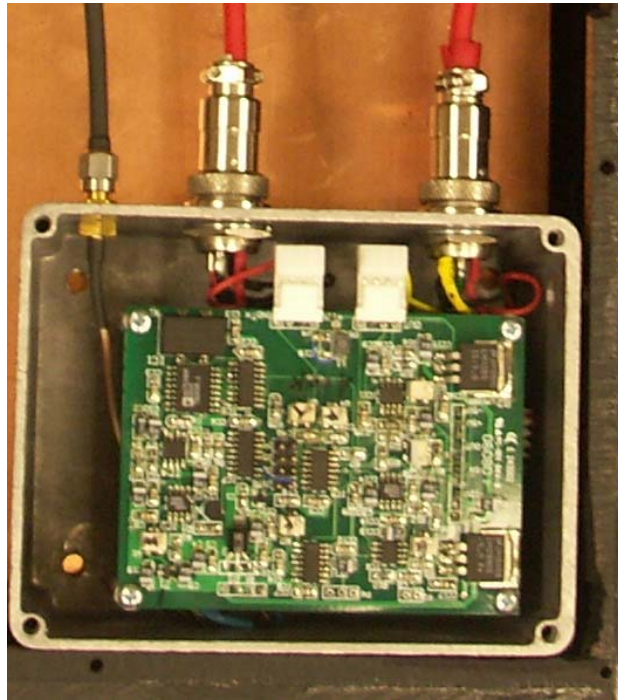


Figure 5 Circuit boards installed in the aluminum box

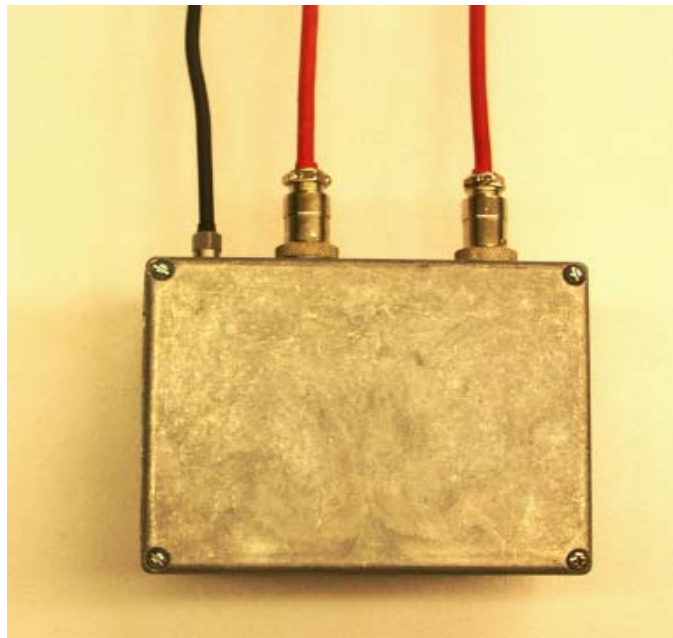


Figure 6 the receiver box is sealed

1.2. Transmitter circuitry

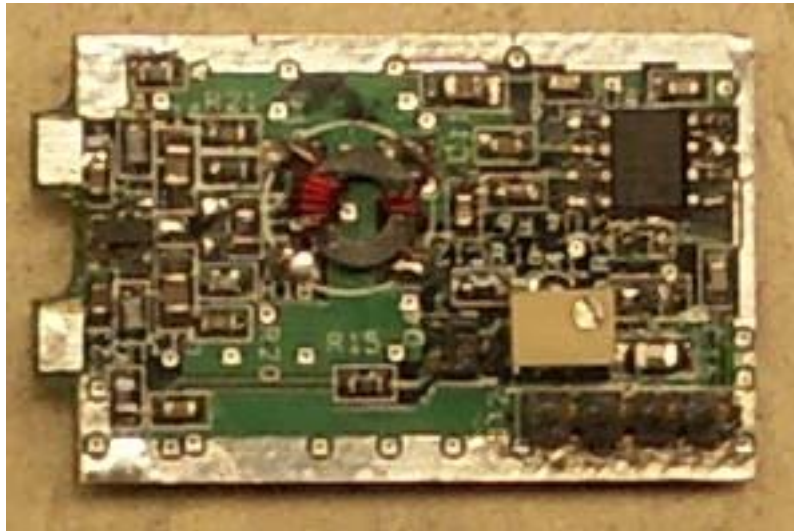


Figure 7 top view of the transmitter board

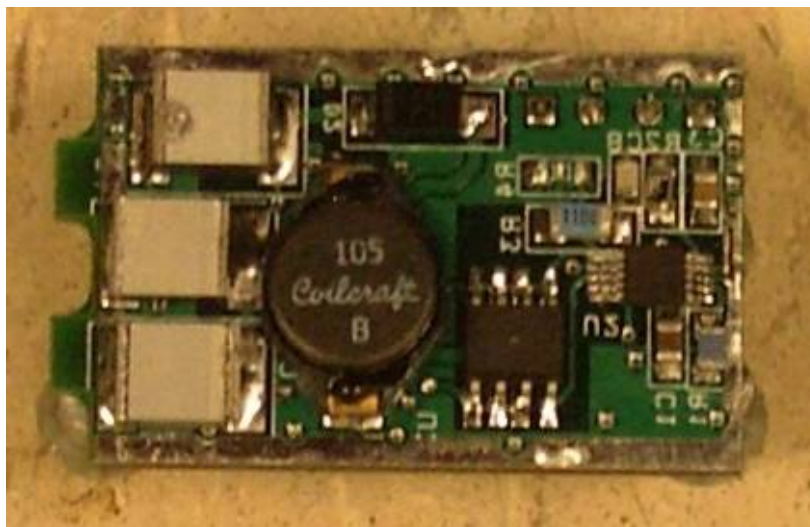


Figure 8 Bottom view of the transmitter board

1.3. Antenna setup

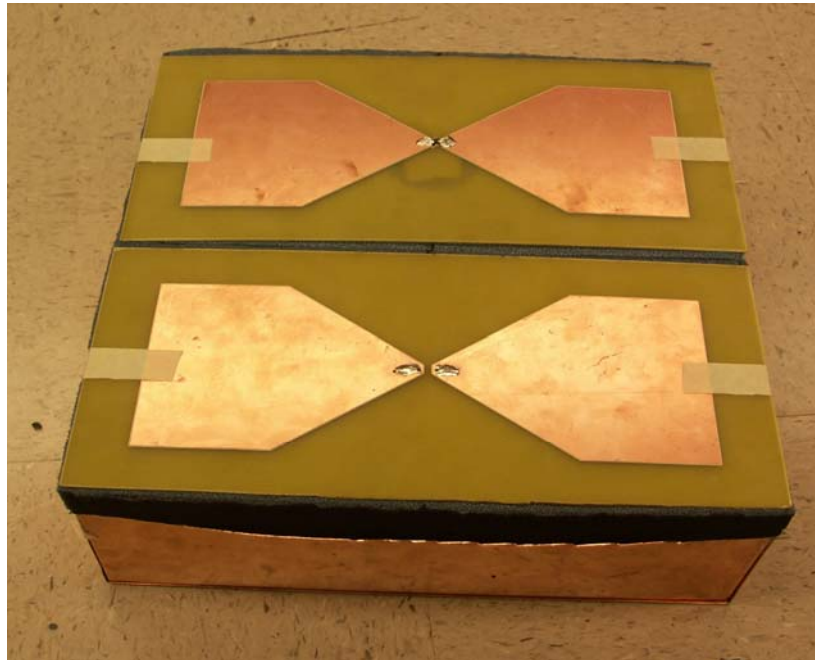


Figure 9 Bowtie antennas

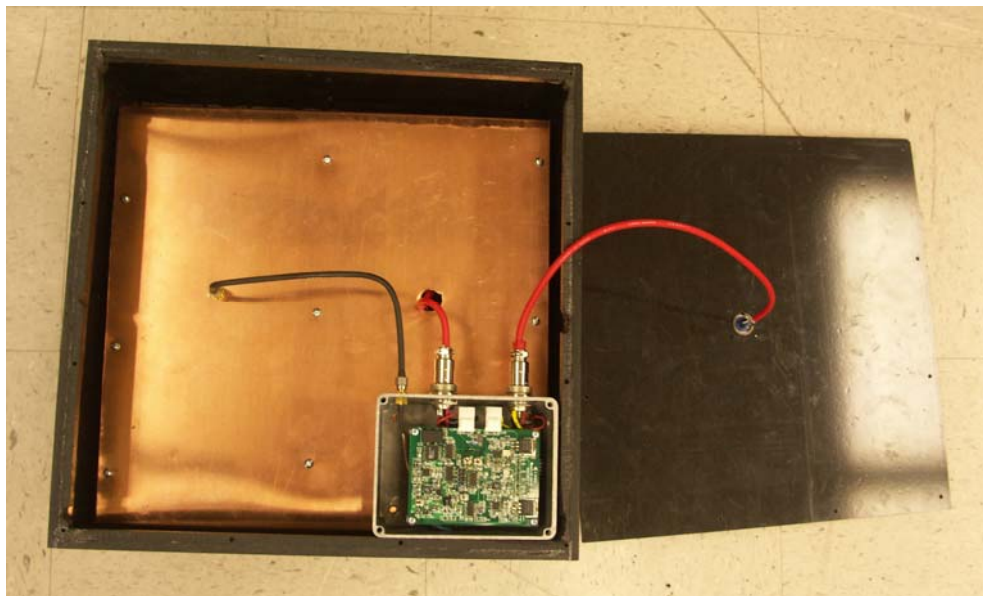


Figure 10 Electrical circuits are mounted on top of the antenna shielding box