

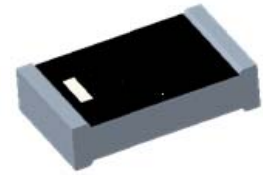
2.4GHz 3216 Chip Antenna: ANT3216R24003KL0

Application:

WLAN, 802.11b/g, Bluetooth, etc...

Features

SMD, high reliability, ultra compact, Omni-directional...



Part number

ANT 3216 R 2400 3K L0
 (1) (2) (3) (4) (5)

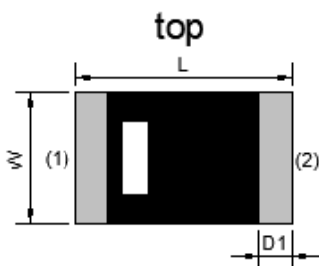
| | |
|--------------------|---------------|
| (1)Size Code | 3.2x1.6mm |
| (2) Packing | Tape and reel |
| (3) Frequency | 2.4GHz |
| (4) Packing Number | 3K |
| (5)Code | L0 |

Electrical Specification

| | |
|---------------------------|------------------|
| Working FrequencyRange | 2400 ~2484 MHz |
| Peak Gain | 1.08dBi (Typ.) |
| Impedance | 50 Ohm |
| VSWR | 2.5(Max) |
| Polarization | Linear |
| Azimuth Beamwidth | Omni-directional |
| Operation Temperature(°C) | -40~85°C |

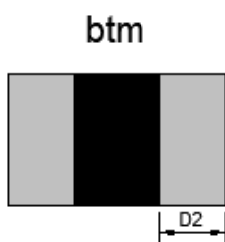
The specification is defined on HEK EVB.

Dimension and Terminal Configuration



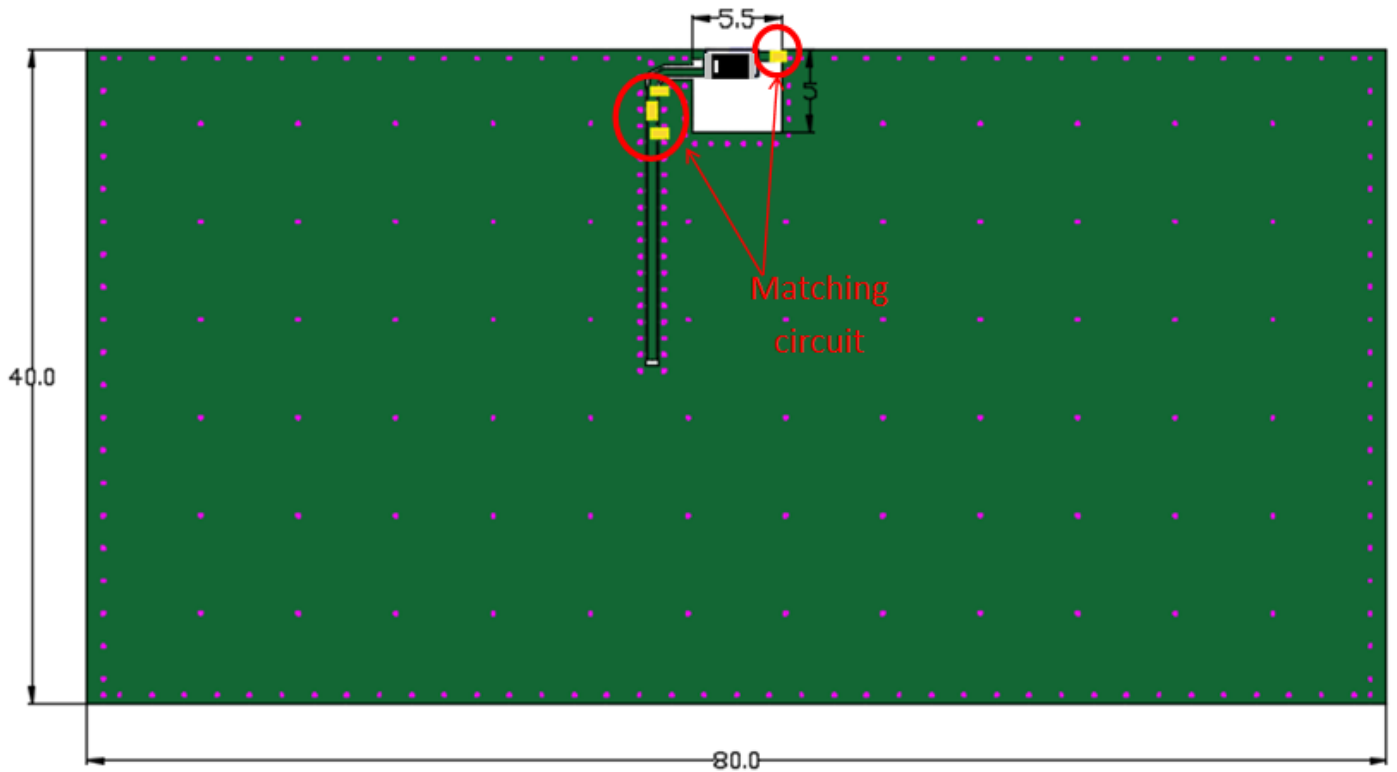
| Dimension (mm) | |
|----------------|-----------|
| L | 3.20±0.15 |
| W | 1.60±0.15 |
| T | 0.60±0.10 |
| D1 | 0.50±0.15 |
| D2 | 1.30±0.15 |

| No. | Terminal Name |
|-----|---------------|
| 1 | Feeding |
| 2 | Ground |

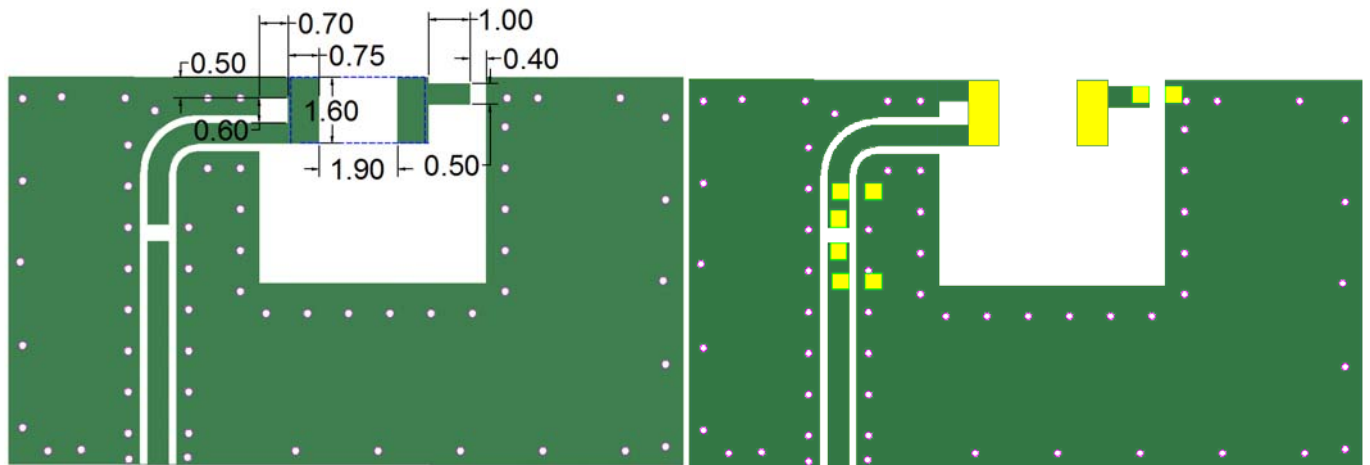


Evaluation Board Reference

PCB Dimension



Antenna Layout Reference

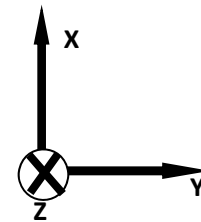
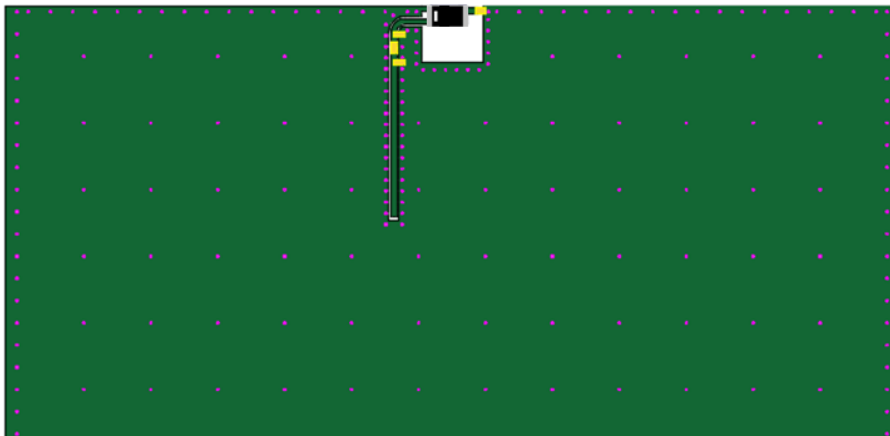
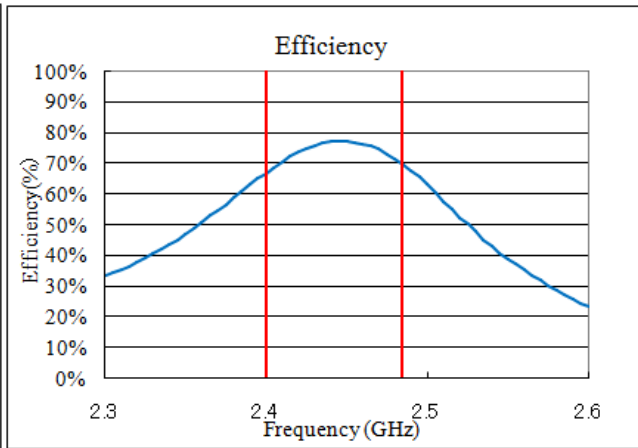
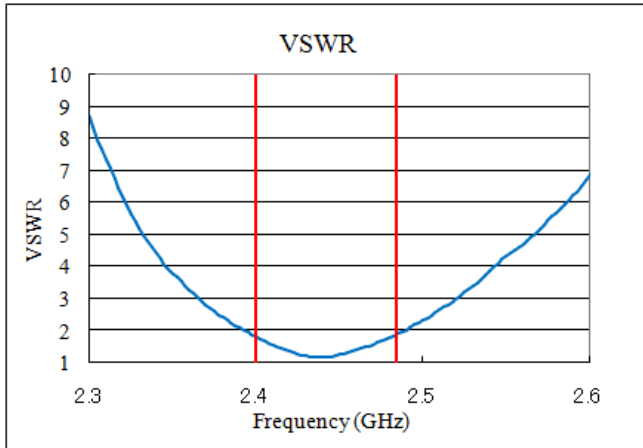


Unit : mm

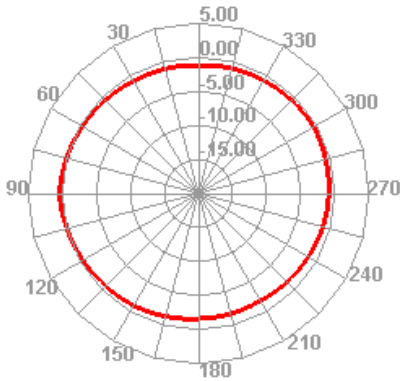
2.4GHz 3216 Chip Antenna: ANT3216R24003KL0

Electrical Characteristics

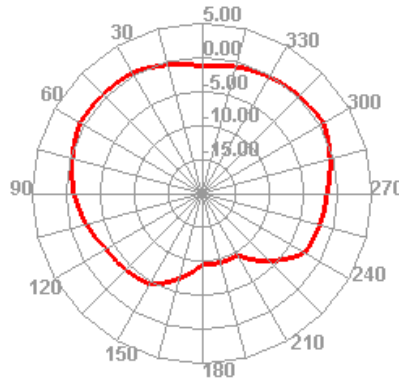
VSWR



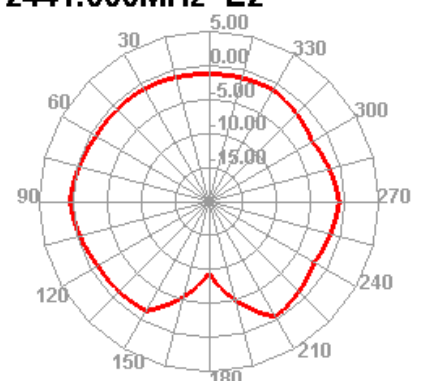
2441.000MHz H



2441.000MHz E1



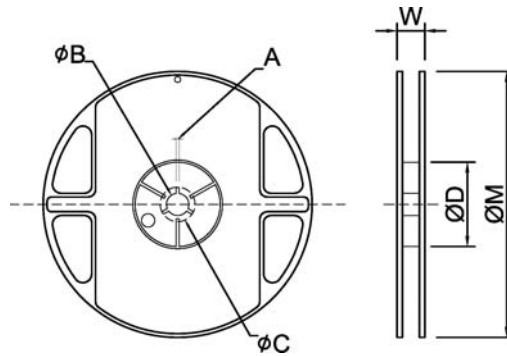
2441.000MHz E2



Taping Specifications

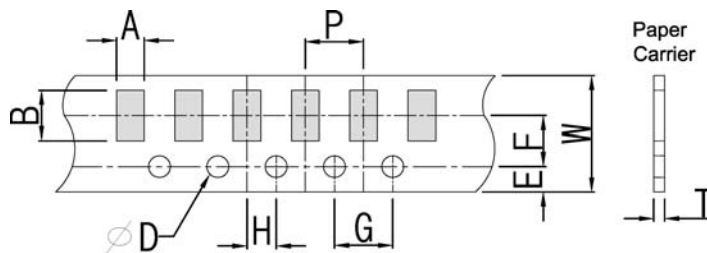
Reel and Taping Specification

Reel Specification



| TYPE | SIZE | | A | ψB | ψC | ψD | W | ψM |
|------|------|---------|---------|----------|----------|----------|----------|----------|
| 3216 | 7" | 3K/Reel | 2.0±0.5 | 13.5±1.0 | 21±1.0 | 60±1.0 | 11.5±2.0 | 178±2.0 |

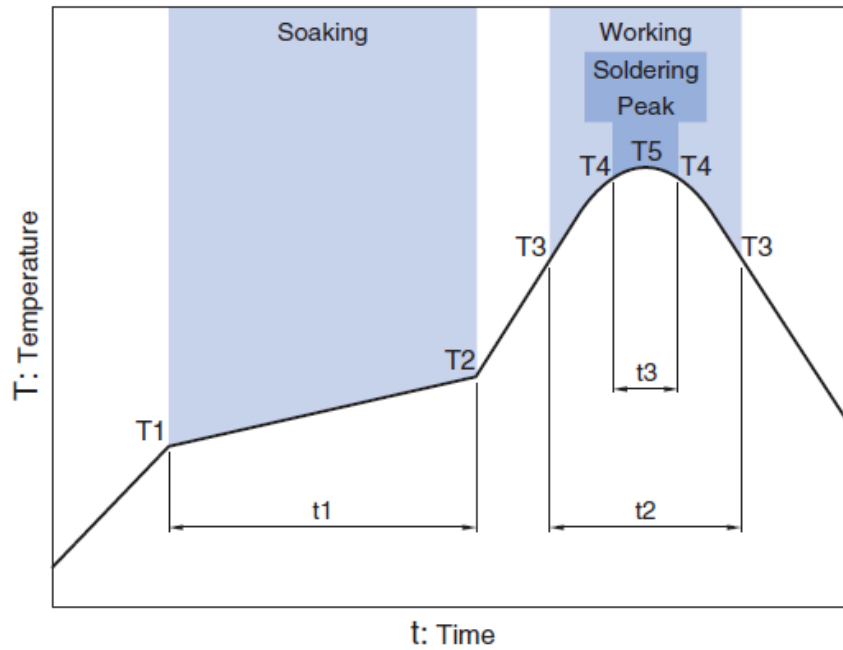
Taping Specification



| Packaging | Type | A | B | W | E | F | G | H | T | ψD | P |
|------------|------|-----------|-----------|----------|-----------|----------|----------|----------|-----------|---------------------|---------|
| Paper Type | 3216 | 1.90±0.20 | 3.50±0.20 | 8.0±0.20 | 1.75±0.10 | 3.5±0.05 | 4.0±0.10 | 2.0±0.05 | 0.75±0.10 | 1.50 +0.10 -0 | 4.0±0.1 |

Recommended Reflow Profile

Pb free solder



| Soaking | | Working | | Soldering | | Peak | |
|---------|-------|--------------|-------|-----------------|--------------|--------------|------------|
| Temp. | Time | Temp. | Time | Temp. | Time | Temp. | |
| T1 | T2 | t1 | T3 | t2 | T4 | t3 | T5 |
| 150°C | 180°C | 60 to 120sec | 230°C | more than 30sec | 247 to 253°C | within 10sec | 260°C Max. |

AUG. 2022 Ver.H01