

# Internal Photos of DynaFlex

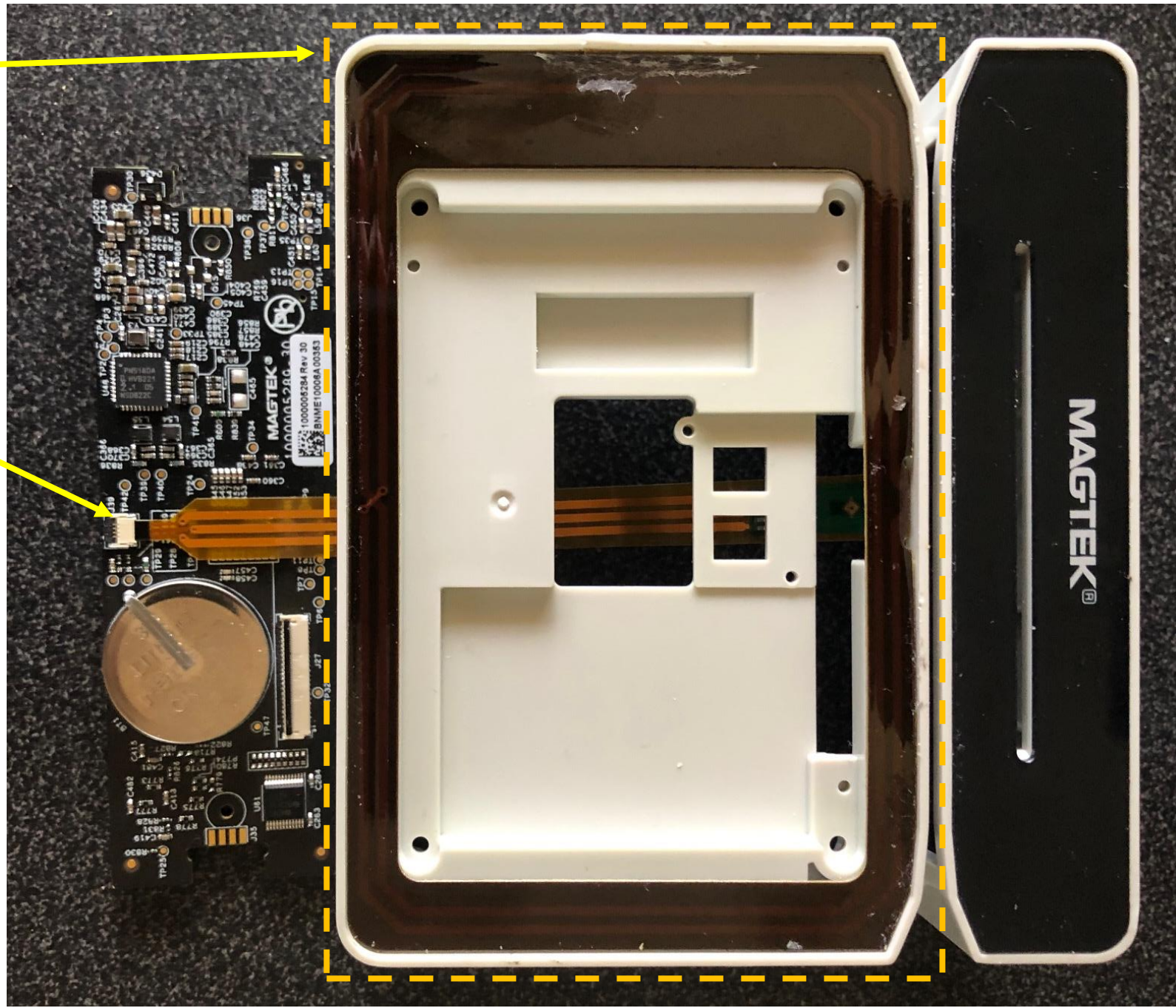




Loop Antenna

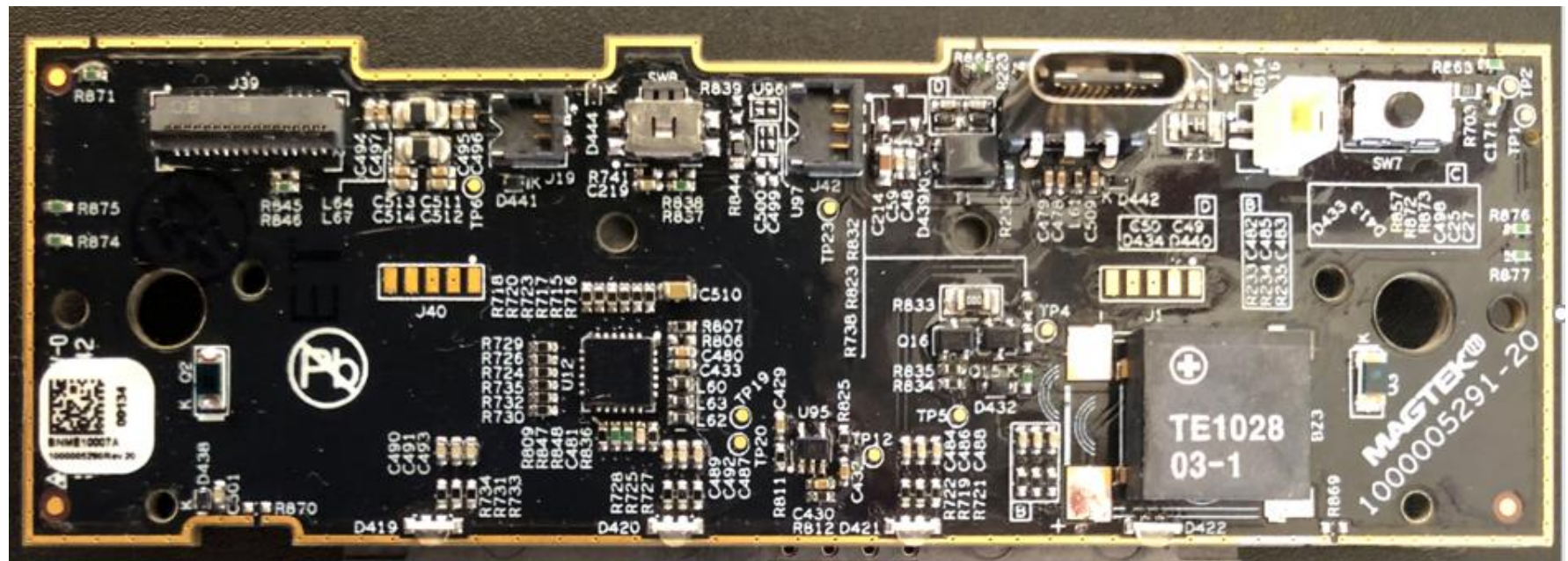
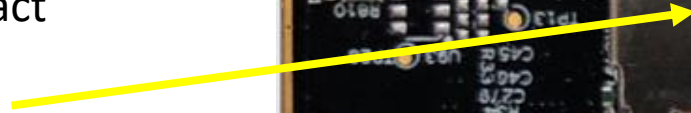


Connection to Antenna





Contact Block for Chip Card reader. This is an OEM part. There is no components under the metal. The 8 Pins shown are part of the contact block.



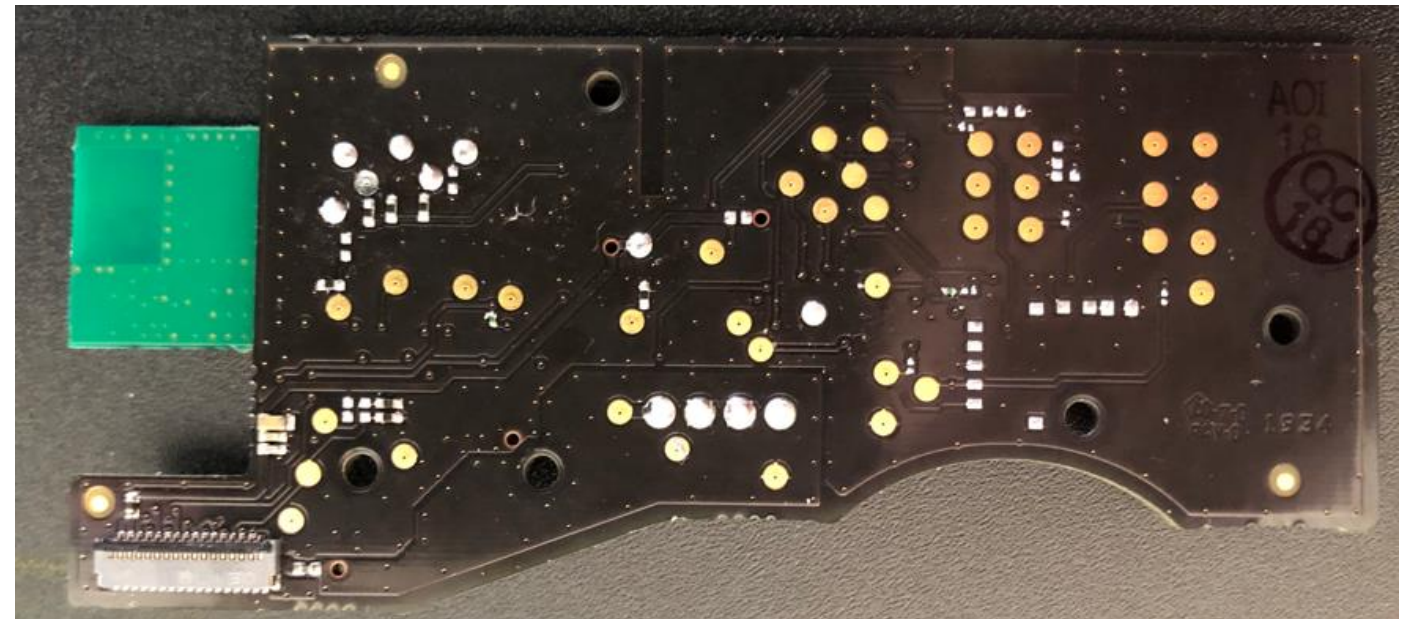
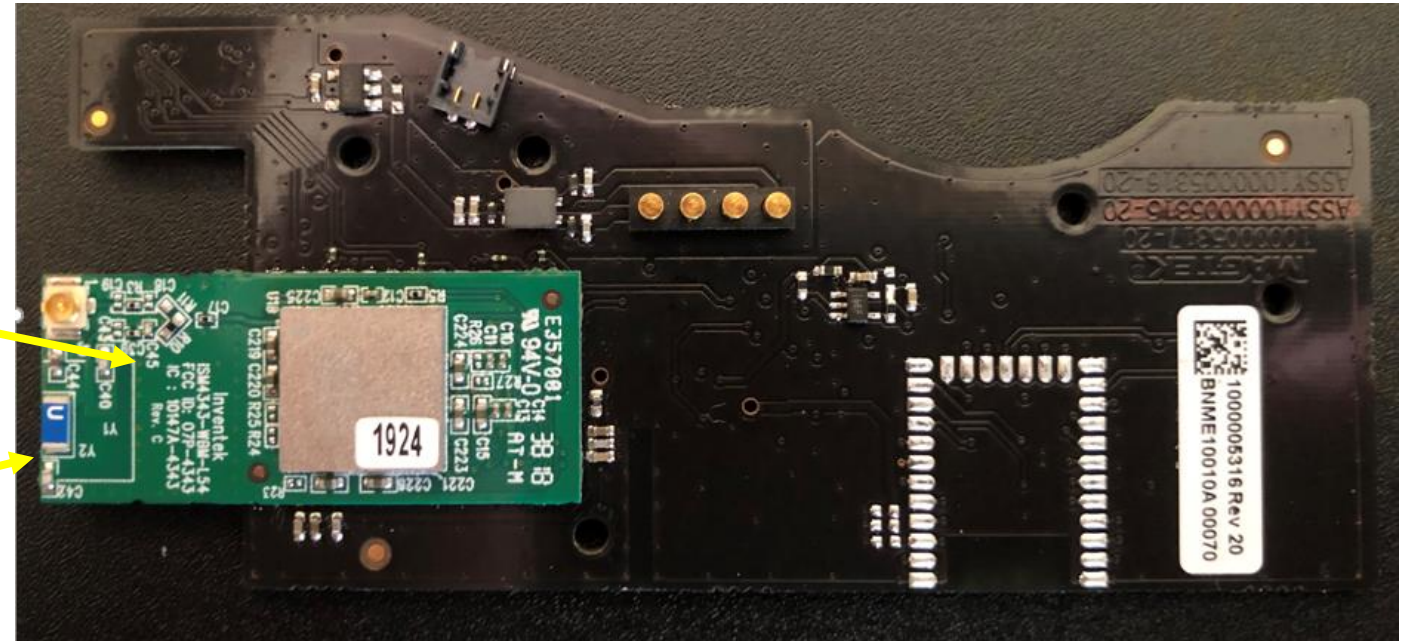




Communication board  
802.11

802.11 module

chip antenna

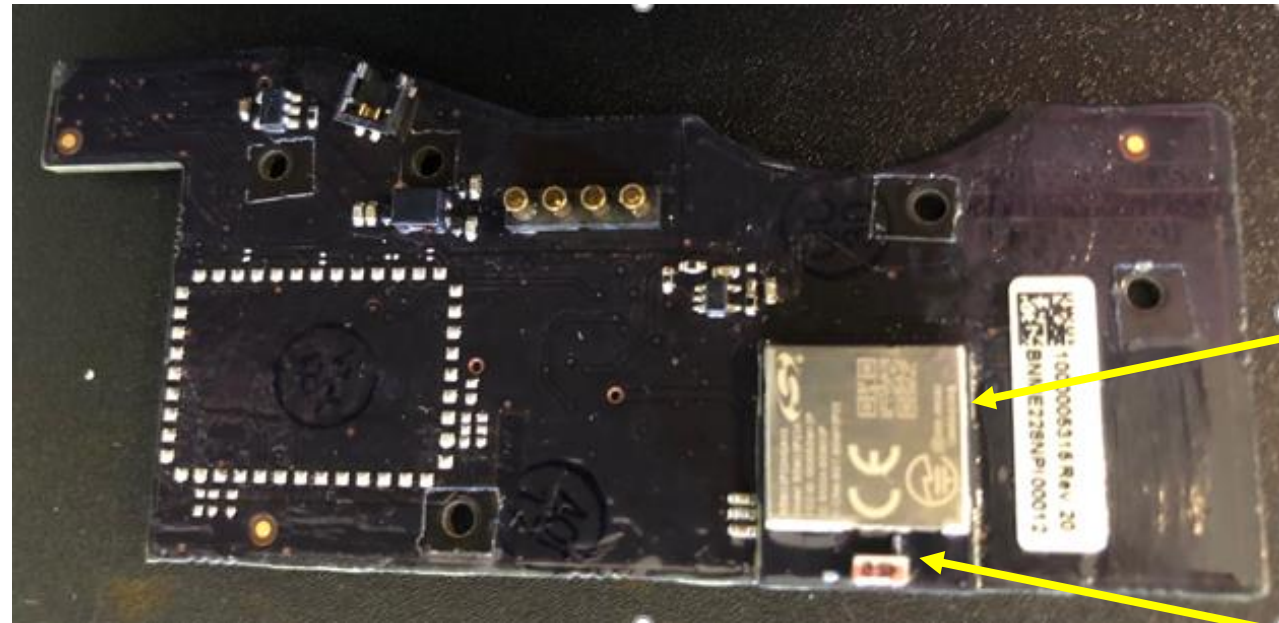




Communication board  
Bluetooth LE



Bluetooth LE module  
with shield removed



Bluetooth LE  
module

Bluetooth LE  
chip antenna

