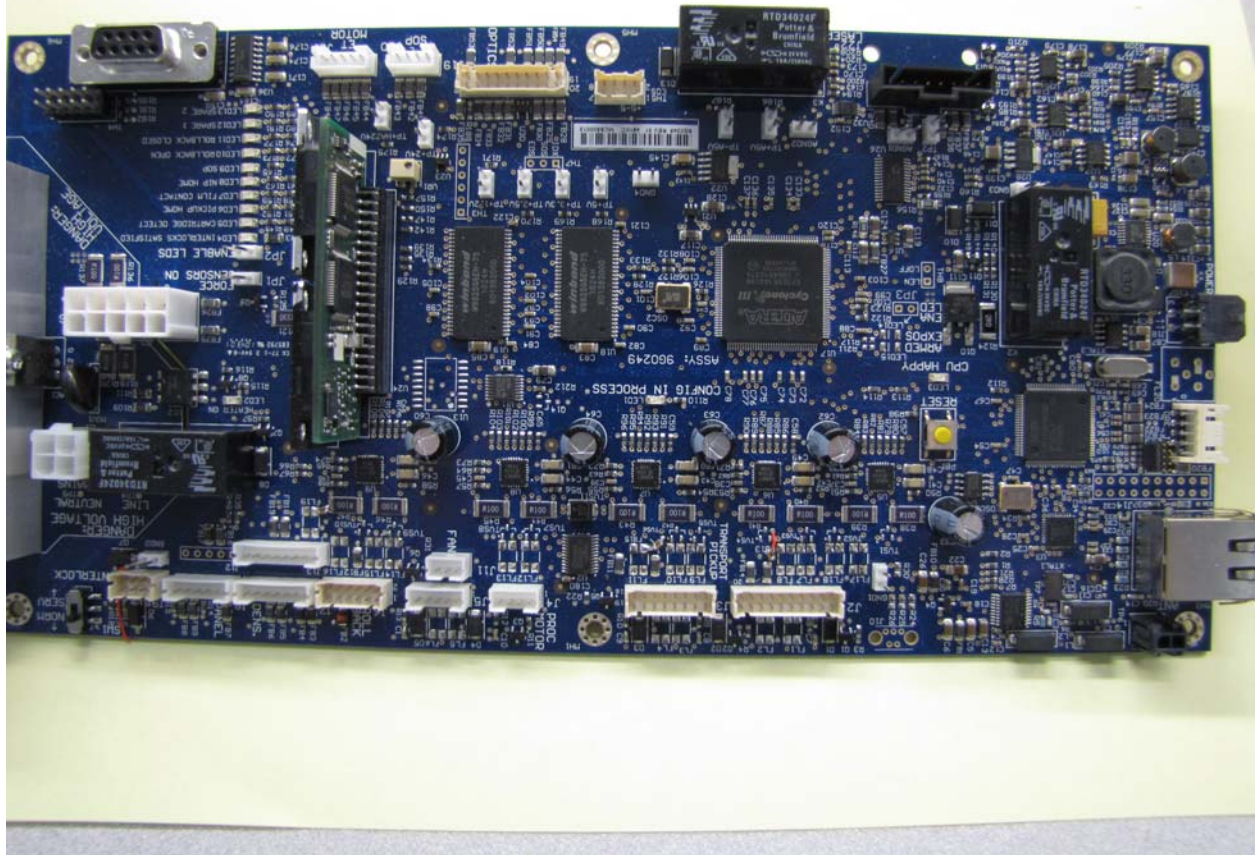
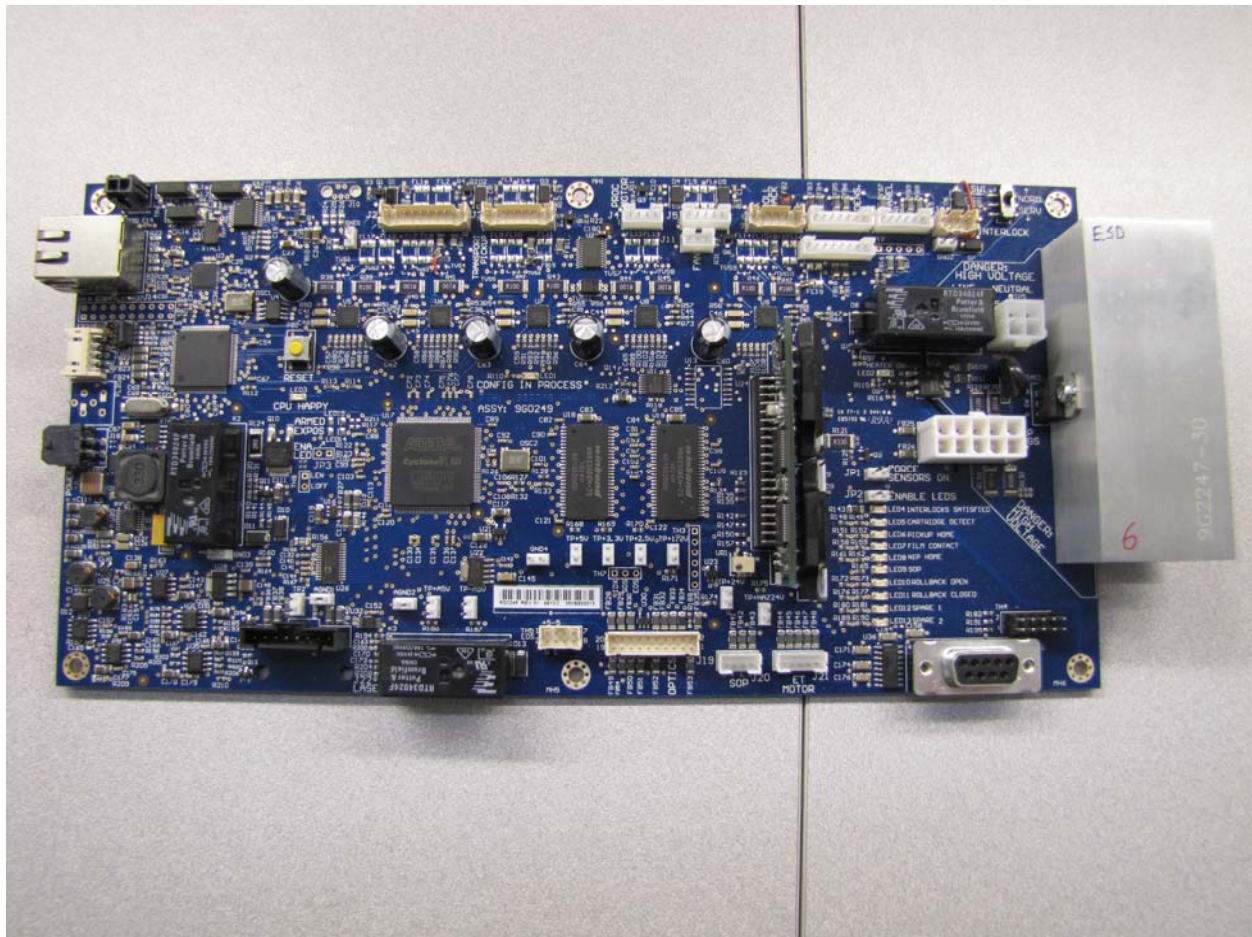


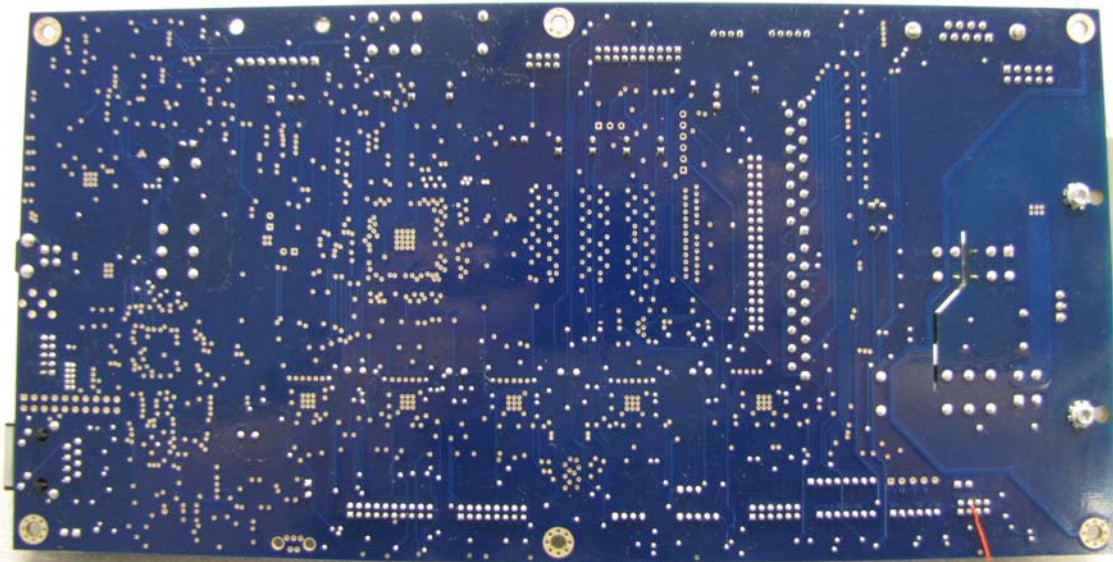
MCS Board Front



MCS Board Front – alternate view

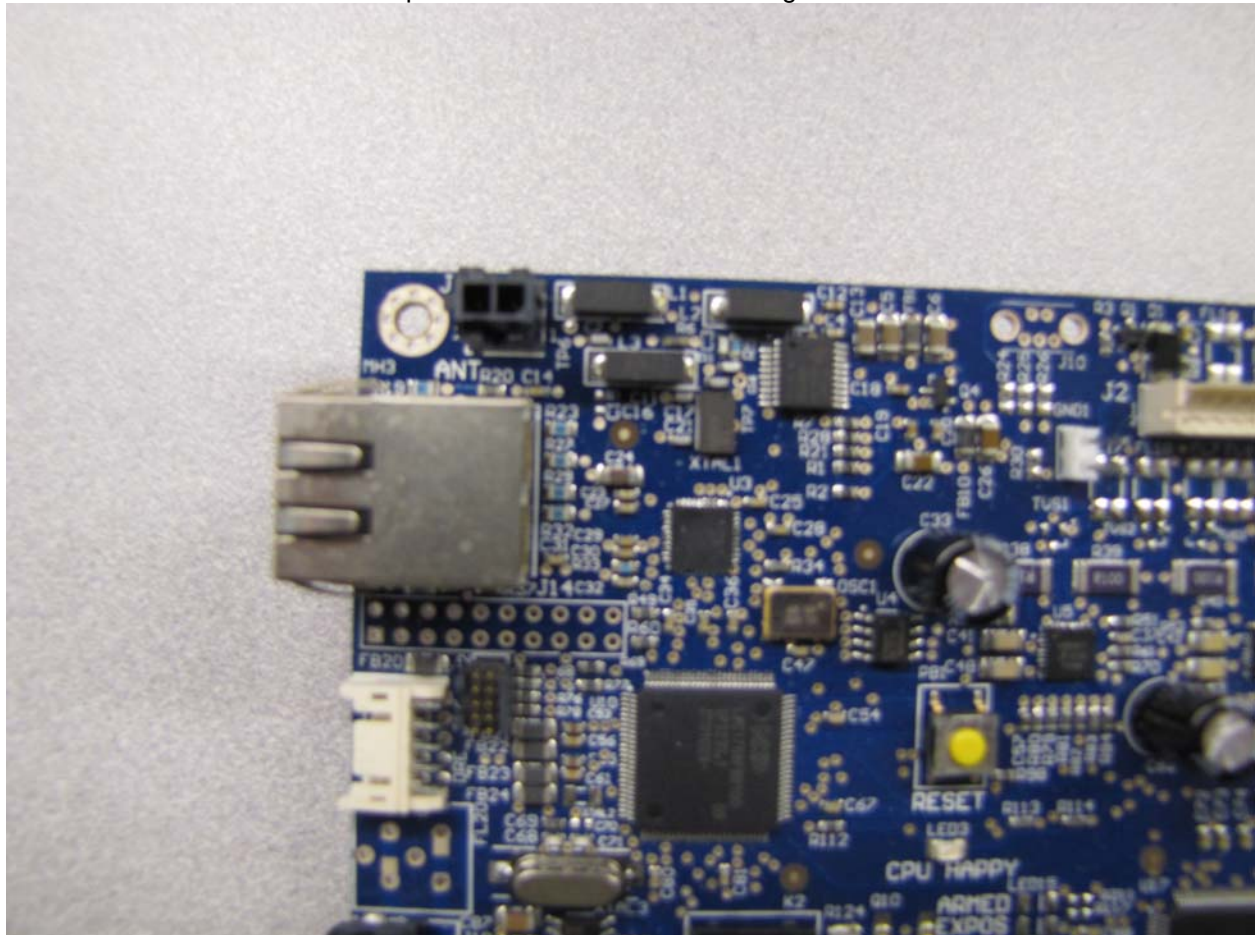


MCS Board Front - Rear

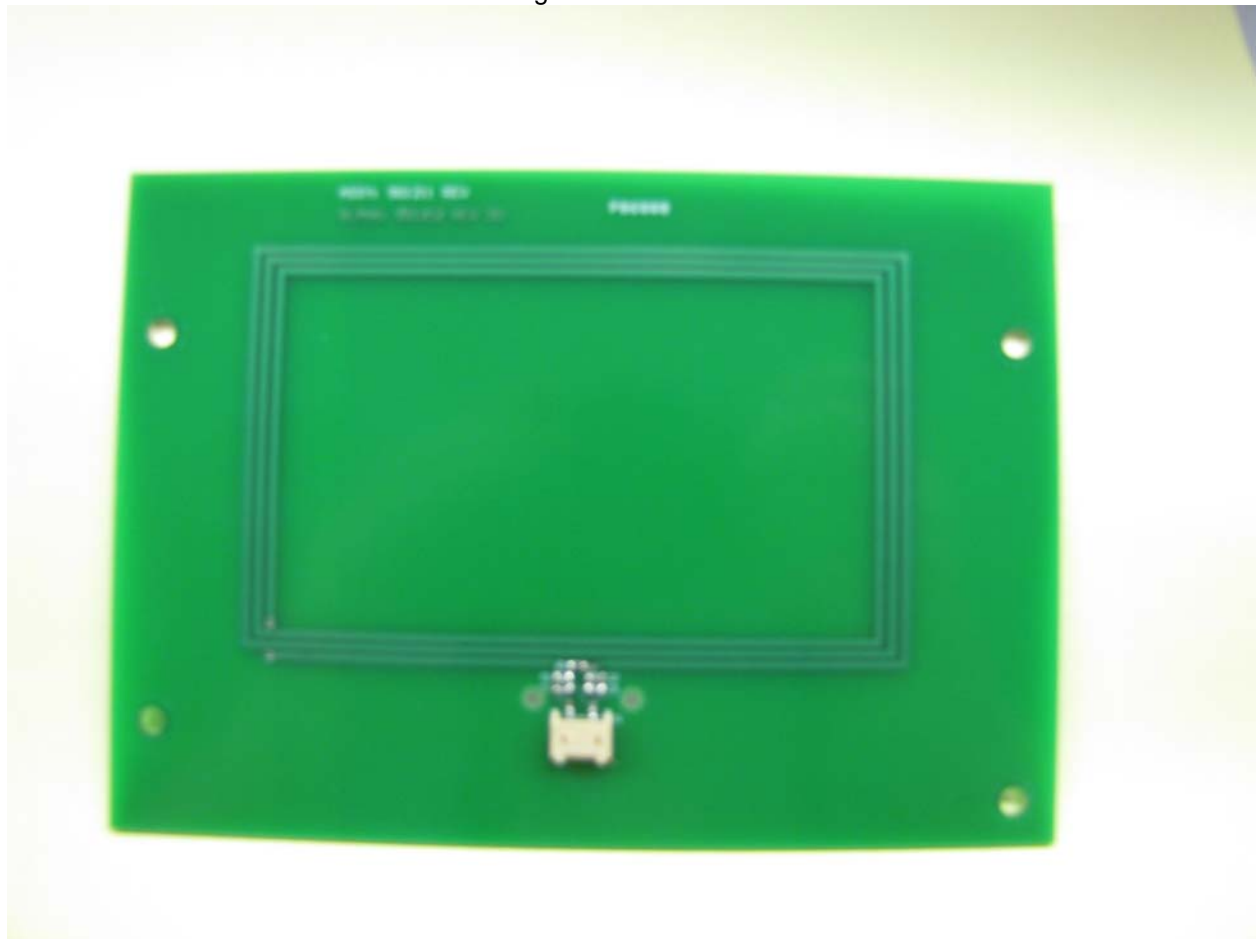




Two pin connector on MCS to RF-Tag Antenna.



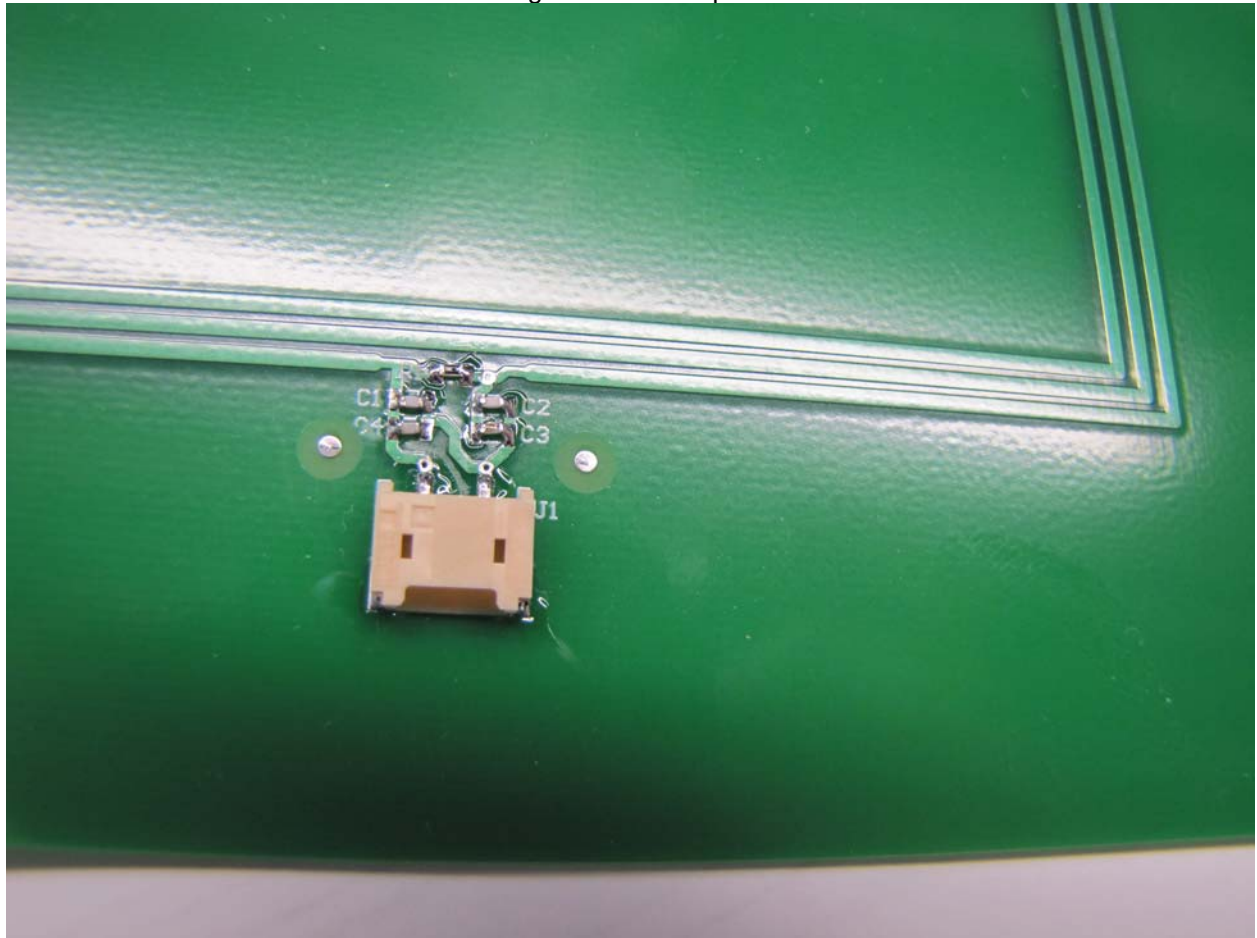
RF-Tag Antenna Board Front



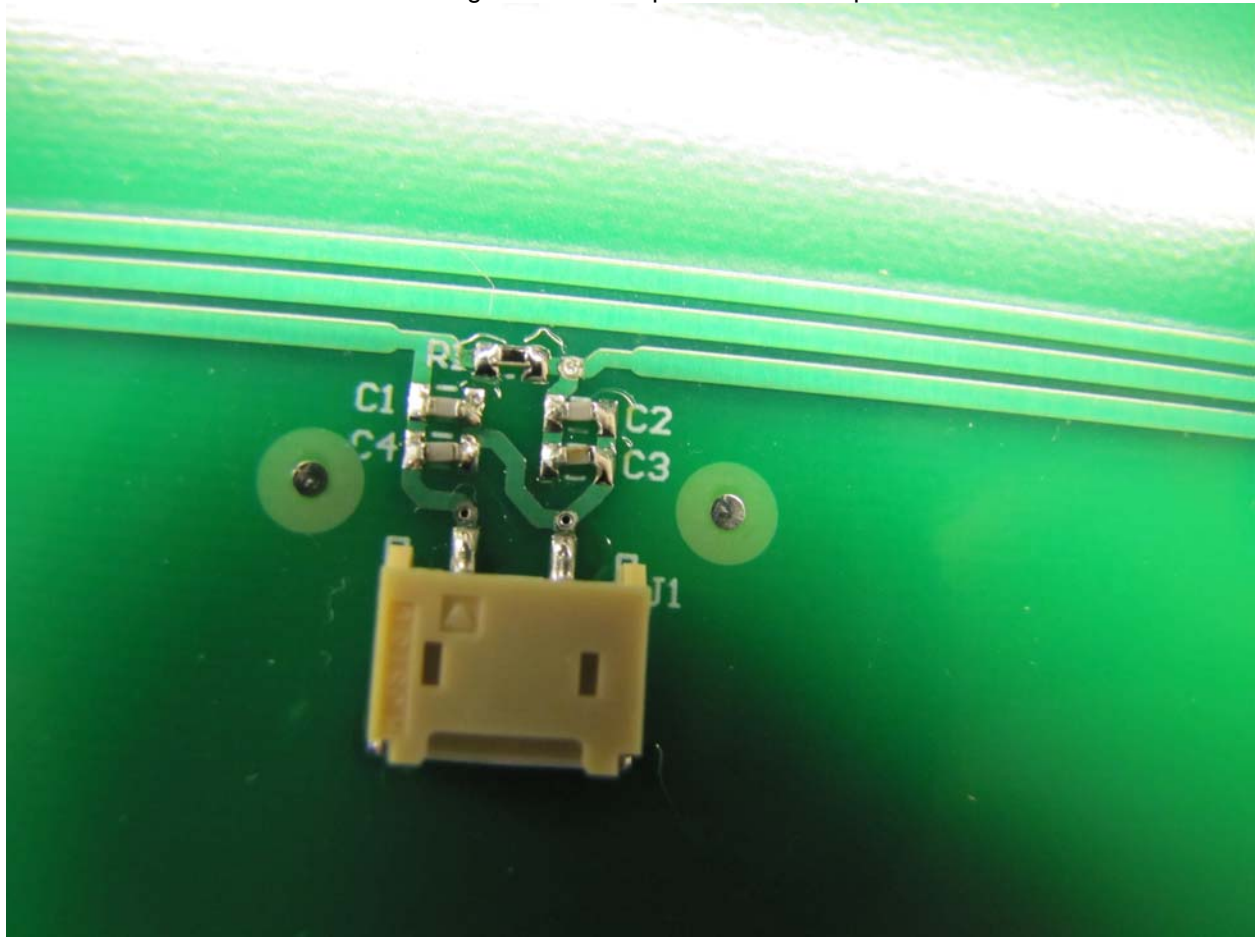
RF-Tag Antenna Board Rear



RF-Tag Antenna Components



RF-Tag Antenna Components - Closeup





RF-Tag Antenna Inside 5700



RF-Tag Board from left outside

