

Labeling Information

Panasonic Model: R8U1FA6550Z
P/N: R8U1FA6550Z

BTv4.0 Dual Mode USB HCI Module

FCC ID: U6YBT800
IC: 219P-BT800

Rev. A

Nov. 10, 2017

1. Scope

This document describes the labeling artwork, location, and justification for the location of such labels for the Panasonic Bluetooth module, R8U1FA6550Z.

2. Label Artwork

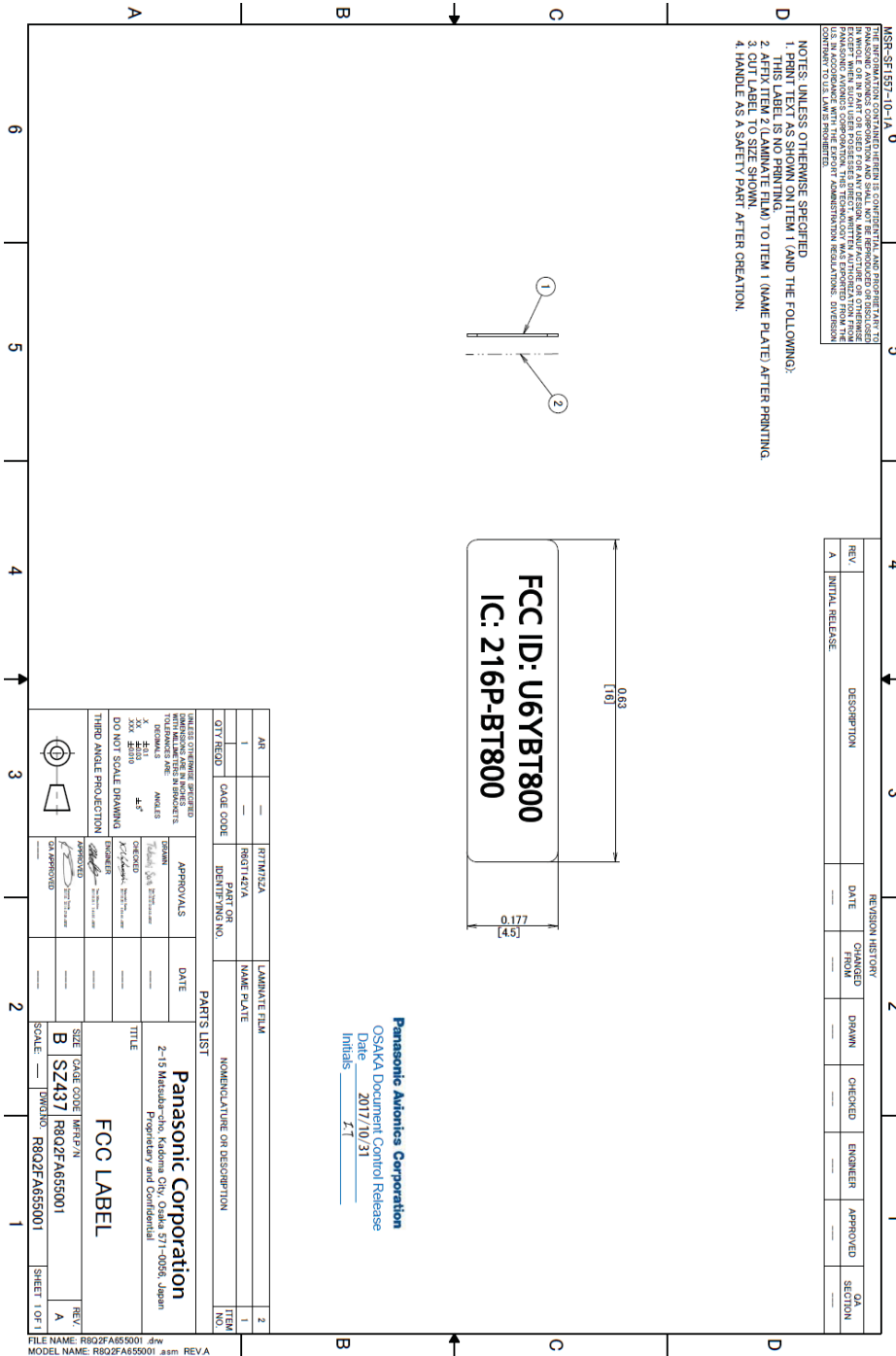


Fig. 1

3. Justification for Placement Location

This section describes the justification for the placement of the new ID & part number labels on the antenna board. The original version of the Bluetooth module circuit manufactured by Laird has been modified to remove the onboard chip antenna as seen below in fig. 2.

The Laird radio circuit is then placed onto the antenna board. The antenna board and the radio module circuit now becomes the entire module. The antenna board is not a host, and only contains the modified radio circuit module, tuning circuit, TVS, and a connector for power and USB data which then connects to a host.

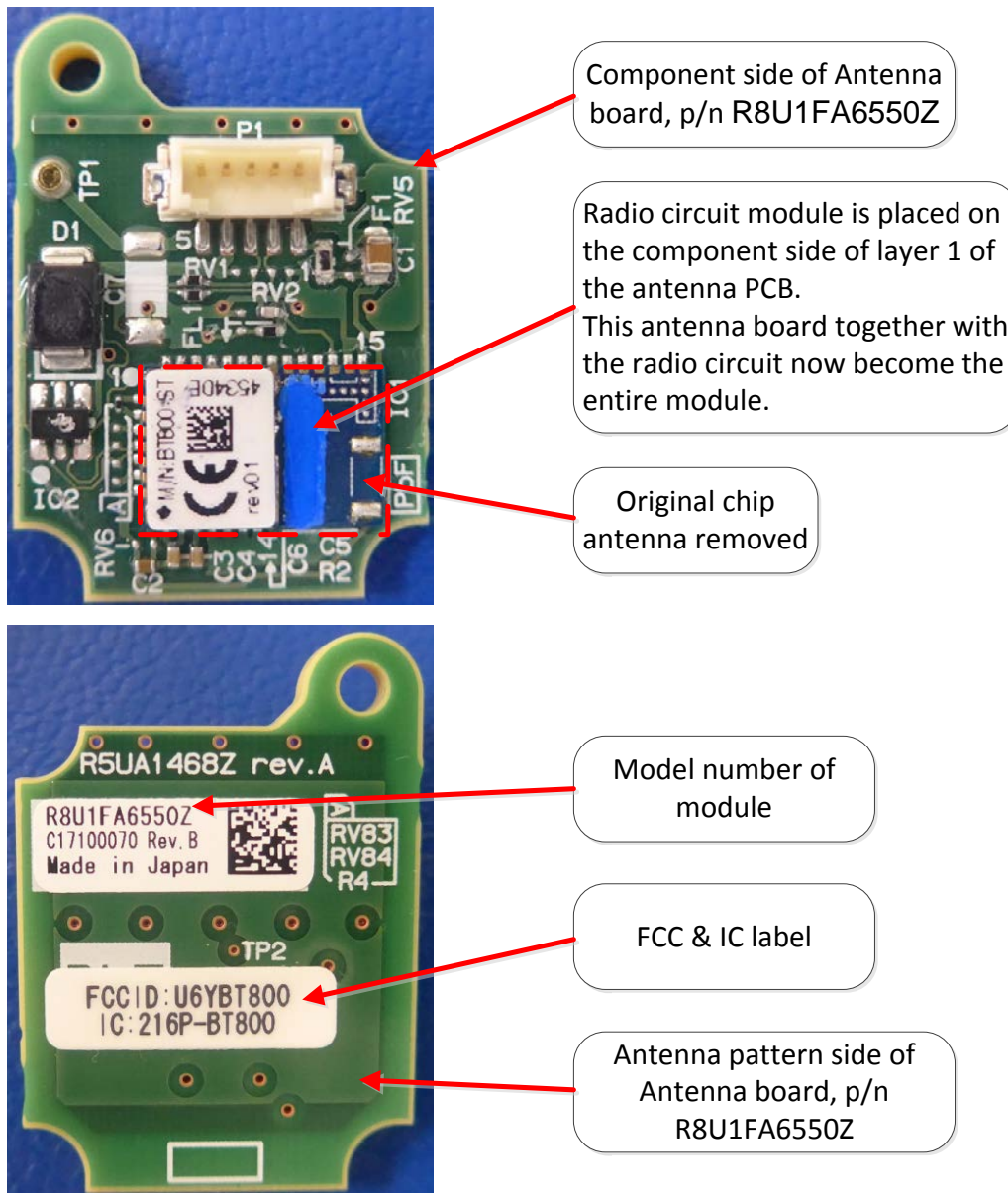


Fig. 2