

VÉRITÉ

Receiver-in-the-ear

INSTRUCTIONS FOR USE



TABLE OF CONTENTS

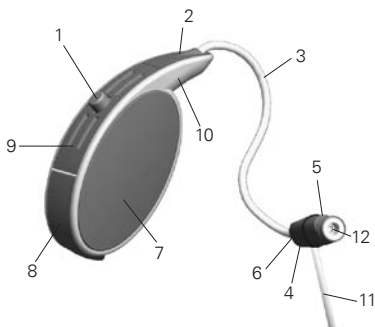
Instrument overview	7
Ear piece overview	8
ON/OFF	9
Placement	10
Removal	12
Change programs	13
Telephone calls	14
Battery indicator	16
Maintenance	17
Battery exchange	21
Battery information	22
Optional accessories	24

Troubleshooting	26
Safety guidelines	29
Environmental protection	33
Interference	34
Product approval, precautions and markings	35
Information to the user regarding the radio communication part of the device	36
Declaration of conformity	38
International warranty	40
Your program configuration	41
Repair	43

Congratulations on the purchase of **Vérité** from Bernafon. Please take the time to read the entire contents of this booklet before using your new hearing instruments. It contains instructions and important information about your hearing instruments and batteries.

Instrument overview

- | | |
|-----------------------------|------------------|
| 1 Program button | 7 Shell |
| 2 Connector plug | 8 Battery drawer |
| 3 Wire | 9 Wind filter |
| 4 Left/Right indicator | 10 Housing |
| 5 Speaker | 11 Ear Grip |
| 6 Speaker unit size marking | 12 NoWax filter |



Ear piece overview

Domes, Micro Molds and Power Molds are ear pieces used to secure the speaker unit in your ear canal and to protect the sound outlet (20) from wax. The Micro Mold has a marking (21) (red = right; blue = left). The marking should point upward in the ear canal. The removal tab (22) is for easy removal.

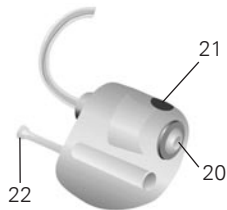
Open Dome



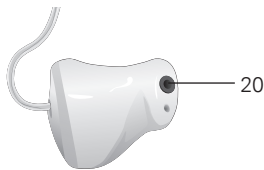
Tulip Dome



Micro Mold



Power Mold



On/Off

On:

Close the battery compartment completely until a click is felt. The hearing instrument will then make a long beep.

Off:

Open the battery door slightly with your finger until a click is felt. Keep your instruments switched off when not worn.

For protection, place them in the product case.

Note: Never force the battery drawer open or closed.



Placement

- 1) Look for the side marking:
left = blue; right = red.
- 2) Position the instrument
behind your ear.
- 3) Then grasp the speaker
unit between thumb and
index finger. The dome
or Micro Mold should point
towards the ear canal
opening. Gently push the
speaker unit into your
ear canal, until the wire
sits flush against
the side of your head.



If you have an Ear Grip attached to the speaker, gently push it into your ear as shown.



When looking in the mirror the device should be almost invisible.

Note: Do not force the speaker too deeply in your ear canal. Do not apply grease or oil on the ear piece as this may damage the speaker.

Removal

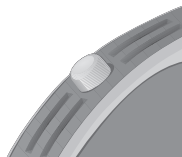
To remove the speaker unit, grasp the wire with thumb and index finger. Do not pull on the Ear Grip. Gently pull the speaker out of your ear.

Important: Do not remove by pulling on the instrument, as the speaker unit may be damaged at the connector.

If the dome is not correctly attached and falls off in the ear canal, please see your medical practitioner.

Change programs

Your hearing instruments may have up to four listening programs. Use the push button to change between these programs. When the hearing instrument is turned on, it will automatically be in program 1. Your hearing instrument will beep in the following sequence when you move between programs:



Move to program 1: one beep

Move to program 2: two beeps

Move to program 3: three beeps

Move to program 4: four beeps

Note: Not all fittings will result in 4 programs; your individual setting may have less.

Telephone calls

If you have an Open Dome or a Tulip Dome, place the telephone directly on the ear as you would normally.

If you have a Power Dome or a Custom Mold hold the telephone higher up towards the top of the ear so the telephone sound outlet is close to the microphone. To avoid whistling, keep the phone at an angle relative to the head (see picture).



Auto Phone

The hearing instrument has an Auto Phone functionality. When the hearing instrument is close to a telephone receiver, the Auto Phone will activate a phone program.

When you end your telephone conversation, the hearing instrument will automatically return to the previous program. Not all telephones can activate the Auto Phone. The telephone receiver may need to have a special magnet fitted. Please follow the separate instructions for mounting the magnet, which is available from your hearing care professional.

Auto Phone warning

If you use an Auto Phone magnet: Keep magnets out of reach of children and pets. If a magnet is swallowed, see a doctor immediately. Do not wear the magnet in a breast pocket and always keep it 30 cm away from active implantable devices. Preferably, use the telephone with the magnet on the opposite side from a pacemaker or other active implants. Keep the magnet 30 cm away from credit cards and other magnetically sensitive devices.

Battery indicator

When the battery is about to run out, the instrument will beep at regular intervals. This warning indicates that the battery should be replaced soon.

Maintenance

General

- Do not wash the instrument or the speaker unit
- Do not use without a dome or a Micro Mold
- Do not remove the speaker unit

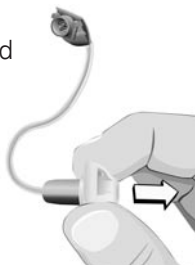
Treat Vérité like other delicate electronic devices; for details see «Safety Guidelines» (page 29).

Cleaning the dome

Clean the speaker unit and dome after use with a dry cloth. If you find earwax remaining on the dome, exchange it.

Changing the dome

Exchange the domes of your hearing instrument with every battery change.



1) Hold the speaker unit firmly.

2) Grasp the dome with the fingertips of the opposite hand and pull it off.



3) Wipe the speaker unit with a dry cloth to make sure it is free from earwax.

4) With clean hands, take a fresh dome out of the package and push it onto the speaker unit as far as it will go.



Make sure that the dome seats fully on the speaker unit. If the dome is not correctly attached and falls off in the ear canal, please see your medical practitioner.

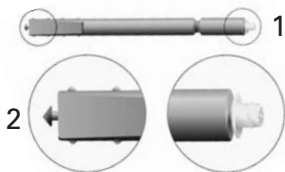
Cleaning the Custom Mold

Clean your Custom Mold after every use by wiping it with a dry cloth. In most cases, there is a hole through the Custom Mold (below the speaker unit). This is the vent. If the vent is plugged with wax, insert the cleaning tool (supplied) from the opposite end (nearest the speaker wire), and push through to remove the wax.



Replace the wax protection (WaxStop) whenever needed following this procedure:

- 1) Take the stick with the new WaxStop on it (1).
On the opposite end is a removal socket for the used WaxStop (2).



- 2) Insert the removal part (2) into the opening of the used WaxStop and pull it slowly out. Keep the stick straight.



- 3) To insert the new WaxStop turn the stick around and place the new filter in the sound outlet and gently remove the stick.



- 4) WaxStop cannot be reused; throw the stick away.



Battery exchange

Your hearing instrument needs a size 312 battery.
To insert a new battery:

1) Use your fingernail to gently swing the battery drawer fully open, but do not force it.

2) Take out the used battery.

3) Remove the sticker from the new battery (if applicable).

4) Place the fresh battery into the drawer with the flat, smooth side up (“+” sign) as shown in the drawing.

5) Close battery drawer securely.



Note: Vérité will not work if the battery is inserted incorrectly and can be damaged by doing this. Correct battery insertion is very important.

Battery information

- Battery life will vary with conditions of use. Ask your hearing care professional for more information.
- Always keep spare batteries on hand. These are available from your hearing care professional.
- A used battery should be replaced immediately.
- If you are not going to use your hearing instruments for a few days, remove the batteries.
- Only use batteries recommended by your hearing care professional, since poor quality batteries can produce a harmful substance.
- At bedtime, or at times when you are not wearing your hearing instrument, open the battery drawer fully. This may help to conserve battery power and reduce the impact of moisture.

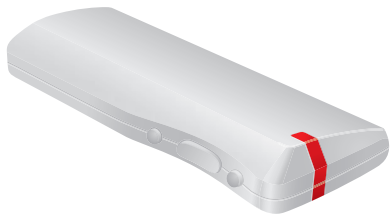
- If the hearing instrument will be stored for a long period of time, be sure to remove the battery. Keep the instrument in a place where it will not be exposed to heat or moisture.
- Any moisture found on a battery should be wiped off immediately, with a soft cloth.
- Used batteries should be returned to your battery supplier or hearing care professional for disposal.
- Never dispose of batteries by burning them. There is a risk that they may explode and cause injury.
- Never dispose of batteries with household waste. They cause environmental pollution.

Note: Always remove zinc-air-batteries before drying your hearing instrument with the help of a drying kit. Drying out zinc-air batteries shortens their life time.

Optional accessories

You may have chosen to purchase one of Vérité's two options:

Remote control – can operate both volume and program changes. Ask your hearing care professional for a demonstration. See the separate instruction booklet for complete operating instructions.



SoundGate (wireless communication interface) – can operate volume and program changes and also connects to sound equipment (MP3 players, computers, cell phones, GPS, etc.) either through Direct Audio Input (DAI) or through a Bluetooth™ communication link. See the separate instruction booklet for complete operating instructions.



Troubleshooting

Domes

Symptom

Potential solution

No or too little sound

Dome blocked
by earwax

Exchange dome

Battery low or dead

Exchange battery

Dome fell off during removal

Dome was not sitting
correctly on speaker unit

Carefully remove dome
if you cannot reach it
contact your medical
professional

Custom Molds

Symptom

Potential solution

No or little sound

Mold blocked
by earwax

Clean mold with
dry cloth and
replace wax filter

Wax filter blocked
by earwax

Replace wax filter

Battery low or dead

Change battery

Device beeps

Low battery

Change battery

Device whistles

Mold not fully
inserted

Reposition

Generic issues

No sound

Device muted

Press button on remote control for 3 seconds to unmute

Device off

Switch on

Speaker blocked

Consult hearing care professional for changing

Safety guidelines

Hearing instruments and batteries can be dangerous if swallowed or improperly used. Such actions can result in severe injury, permanent hearing loss or even fatality.

Familiarize yourself completely with the following general warnings before using your hearing instruments.

- Hearing instruments should be used only as directed and adjusted by your trained hearing care professional. Misuse or improper adjustments can result in sudden and permanent hearing loss.
- Hearing aids will not restore normal hearing or prevent hearing loss resulting from organic conditions.
- Never allow others to wear your hearing instruments, because they are adjusted for your hearing requirements and may permanently damage another person's hearing.

- A slap to your ear while wearing the instrument could be harmful. Avoid wearing your hearing instrument while playing contact sports (e.g. rugby, football etc.).
- Be aware that use of a hearing instrument may cause excess earwax to build up in the ear canal which may require removal by a trained medical professional.
- In rare cases, a hearing aid or earmold may cause a discharge from the ear or allergic reaction. See a physician immediately if these conditions occur.
- A hearing aid or earmold is a custom-made product. If you experience discomfort or irritation of your ear, please see your hearing specialist immediately for modification of the instrument or earmold at the point of irritation.
- Hearing instruments, their parts and batteries should be kept out of reach of infants, children and anyone who might swallow these items or otherwise cause themselves injury.

- Discard batteries and keep them out of sight of infants, small children, persons of mental incapacity or pets.
- Clean your hearing instruments and their parts on a regular basis only with products that are recommended by your hearing care professional. Microorganisms from unclean instruments may cause skin irritations.
- Be careful with leaking battery liquid, as it is a hazardous substance.
- Never try to recharge non-rechargeable batteries.
- Never change the battery or adjust the controls of the hearing instrument in front of infants, small children and persons of mental incapacity.
- Never put your hearing instrument or batteries in your mouth, they could easily be swallowed.
- Keep batteries away from medications. Batteries are easily mistaken for pills.

- In case a battery or hearing instrument is swallowed, see a doctor immediately.
- Be aware of the possibility that your instruments may stop functioning without notice. Keep this in mind while you circulate in traffic or otherwise depend on warning sounds.
- Traffic or other warning sounds may also be reduced in level by a directional microphone when these sounds are coming from behind you.
- Never insert cleaning tools into the sound outlet or microphone inlet. This could damage the hearing instruments.

Environmental protection

This device contains electronic components. Therefore the Directive 2002/96/EC on waste electrical and electronic equipment applies.

Help to protect the environment by not disposing of your hearing instruments or batteries with your unsorted household waste. Please recycle your hearing instruments and batteries according to your local regulations or return them to your hearing care professional for disposal.



Interference

Your hearing instrument has been thoroughly tested for interference according to stringent international standards. However, new technological developments constantly create new products and some may emit electromagnetic radiation causing unforeseen interference with hearing instruments. Examples include induction cooking appliances, shop alarm systems, mobile phones, fax machines, personal computers, X-rays, computerized tomography (CT scans), etc.

Your hearing instruments are designed to comply with the most stringent Standards of International Electromagnetic Compatibility. However, your hearing instrument may cause interference with other medical devices. Such interference can also be caused by radio signals, power line disturbances, airport metal detectors, electromagnetic fields from other medical devices and electrostatic discharges.

Product approval, precautions and markings

The hearing instrument contains a radio transmitter using short range magnetic induction technology working at 3.84 MHz. The magnetic field strength of the transmitter is $< -42 \text{ dB}\mu\text{A/m @ 10m}$.

The emission power from the radio system is well below international emission limits for human exposure. For comparison, the radiation of the hearing instrument is lower than unintended electromagnetic radiation from for example halogen lamps, computer monitors, dishwashers etc. The hearing instrument complies with international standards concerning Electromagnetic Compatibility.

Due to the limited size available on the instruments all relevant approval markings are found in this document.

Information to the user regarding the radio communication part of the device

Bernafon AG
VE 505



FCC ID U6XFURITE1
IC: 7031A-FURITE1

Statement of compliance:

This device complies with part 15 of the FCC Rules and RSS-210 of Industry Canada. Operation is subject to the following two conditions:

- (1) This device may not cause harmful interference,
and
- (2) This device must accept any interference received, including interference that may cause undesired operation.

This Class B digital apparatus complies with Canadian ICES-003.

Note: This equipment has been tested and found to comply with the limits for a Class B digital device, pursuant to part 15 of the FCC Rules. These limits are designed to provide reasonable protection

against harmful interference in a residential installation. This equipment generates, uses and can radiate radio frequency energy and, if not installed and used in accordance with the instructions, may cause harmful interference to radio communications. However, there is no guarantee that interference will not occur in a particular installation. If this equipment does cause harmful interference to radio or television reception, which can be determined by turning the equipment off and on, the user is encouraged to try to correct the interference by one or more of the following measures:

- Reorient or relocate the receiving antenna.
- Increase the separation between the equipment and receiver.
- Connect the equipment into an outlet on a circuit different from that to which the receiver is connected.
- Consult the dealer or an experienced radio/TV technician for help.

Caution: Changes or modifications not expressly approved by Bernafon AG could void the user's authority to operate the equipment.

Declaration of conformity

This device is in conformance with the requirements of the Directive 93/42/EEC of the Council of the European Communities concerning medical devices, MDD. This is certified by applying the following marking:



This device complies with the essential requirements of the Directive 1999/5/EC of the European Parliament on radio equipment and telecommunications terminal equipment, R&TTE. It operates as an inductive application in a harmonized frequency band according to the Commission Decision 2008/432/EC and may be used in all member states of the EU and EFTA. This is certified by applying the following marking:



Declaration of conformity is available at:

Bernafon AG
Morgenstrasse 131
3018 Bern
Switzerland

International warranty




Your hearing instruments are covered by a limited warranty, covering defects in materials and workmanship. This warranty covers the hearing instruments themselves, but not accessories such as batteries, tubing, earmolds, etc.

This warranty is void if a defect is the result of misuse or mistreatment. The warranty is also void if the hearing instruments have been repaired by nonauthorized service personnel.

Please review your warranty with your hearing care professional and make sure that your warranty card is completed correctly.

Your program configuration

Your hearing instruments are programmed the following way:

Program	Beeps	Function
1	1 	_____
2	2 	_____
3	3 	_____
4	4 	_____

Right and left instruments synchronized.

When this feature is active, changes made to one instrument are automatically made in the other through a wireless communication link.

Active

Inactive

Data logging and learning

The data logging and learning features store information relating to the use of your hearing instruments such as changes made to the volume control and the push button. This information can be used by the hearing care professional to further adjust your hearing device to your individual needs. If you do not want this feature to be active, please ask your hearing care professional, to switch it off.

Repair

If your hearing instrument requires repair, you should contact your hearing care professional.

Place stamp with dispenser name and address here:

Bernaфон Australia Pty. Ltd.

12/97 Castlemaine Street
Milton QLD 4064
Australia
Freecall 1800 809 111
Phone +61 7 3250 0300
Fax +61 7 3250 0372
www.bernaфон.com.au

Bernaфон, LLC

200 Cottontail Lane, Bldg. B
Somerset, NJ 08873
USA
Phone +1 888-941-4203
Fax +1 732-560-4877
www.bernaфон-us.com

Manufacturer:**Bernaфон AG**

Morgenstrasse 131
3018 Bern
Switzerland
Phone +41 31 998 15 15
Fax +41 31 998 15 90
www.bernaфон.com

Bernaфон Canada Ltd.

500 Trillium Drive Unit 15
Kitchener, Ontario N2R 1A7
Canada
Toll free 1 800 265 8250
Phone +1 519 748 6669
Fax +1 519 748 9158
www.bernaфон.ca

Bernaфон UK

Cadzow Industrial Estate
Low Waters Road
Hamilton
ML3 7QE Scotland
Phone +44 1698 285 968
Fax +44 1698 421 456
www.bernaфон.co.uk

Bernaфон New Zealand Ltd.

Level 1, Building F
27-29 William Pickering Drive
Albany, Auckland 0632
New Zealand
Free Call 0800 442 257
Phone +64 9 920 42 40
Fax +64 9 920 42 43
www.bernaфон.co.nz

www.hear-it.org

**For more information about
hearing and hearing loss**

01.09/BAG/956-79-310-00/subject to change

bernaфон 
Your hearing • Our passion