

E-TOP 11n Dual-Band USB Dongle

User Guide of WU318d

Installing the software of USB Adapter	3
Configuring your wireless network (with Wireless Utility)	5
Pin Input Config (PIN).....	11
Push Button (PBC)	15
Radio Off.....	18
Disable Adapter.....	19
Access Point Mode	21
Uninstalling the software	23
Wireless Zero Configuration Troubleshooting	25
Federal Communication Commission Interference Statement	31

Federal Communication Commission Interference Statement

This equipment has been tested and found to comply with the limits for a Class B digital device, pursuant to Part 15 of the FCC Rules. These limits are designed to provide reasonable protection against harmful interference in a residential installation.

This equipment generates, uses and can radiate radio frequency energy and, if not installed and used in accordance with the instructions, may cause harmful interference to radio communications. However, there is no guarantee that interference will not occur in a particular installation. If this equipment does cause harmful interference to radio or television reception, which can be determined by turning the equipment off and on, the user is encouraged to try to correct the interference by one of the following measures:

- . Reorient or relocate the receiving antenna.
- . Increase the separation between the equipment and receiver.
- . Connect the equipment into an outlet on a circuit different from that to which the receiver is connected.
- . Consult the dealer or an experienced radio/TV technician for help.

FCC Caution:

To assure continued compliance, any changes or modifications not expressly approved by the party responsible for compliance could void the user's authority to operate this equipment. (Example - use only shielded interface cables when connecting to computer or peripheral devices).

This transmitter must not be co-located or operating in conjunction with any other antenna or transmitter.

This device complies with Part 15 of the FCC Rules.

Operation is subject to the following two conditions:

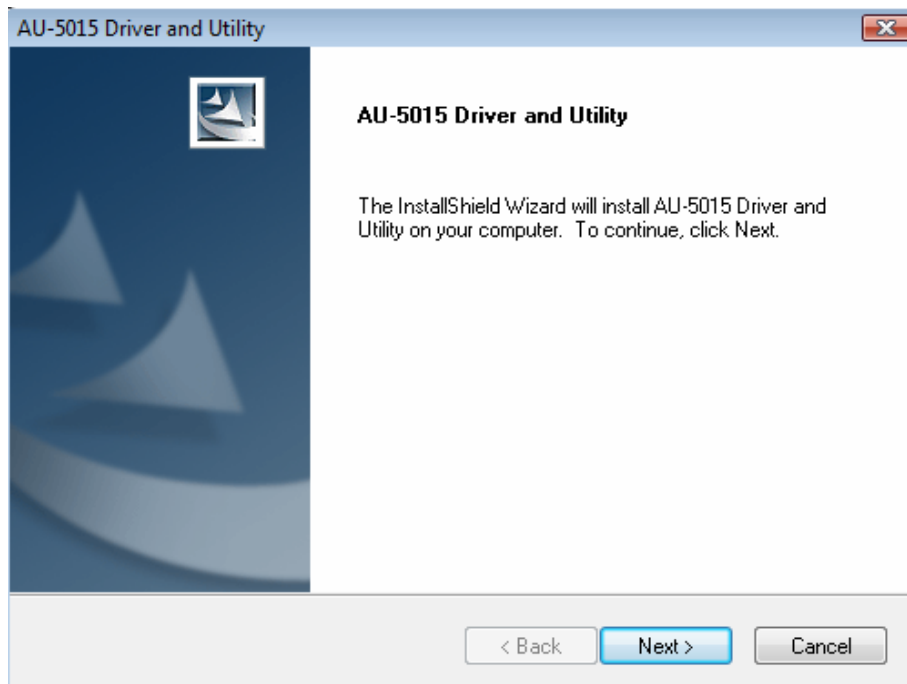
- (1) This device may not cause harmful interference, and
- (2) This device must accept any interference received, including interference that may cause undesired operation.

802.11a (UNII) RF exposure statement

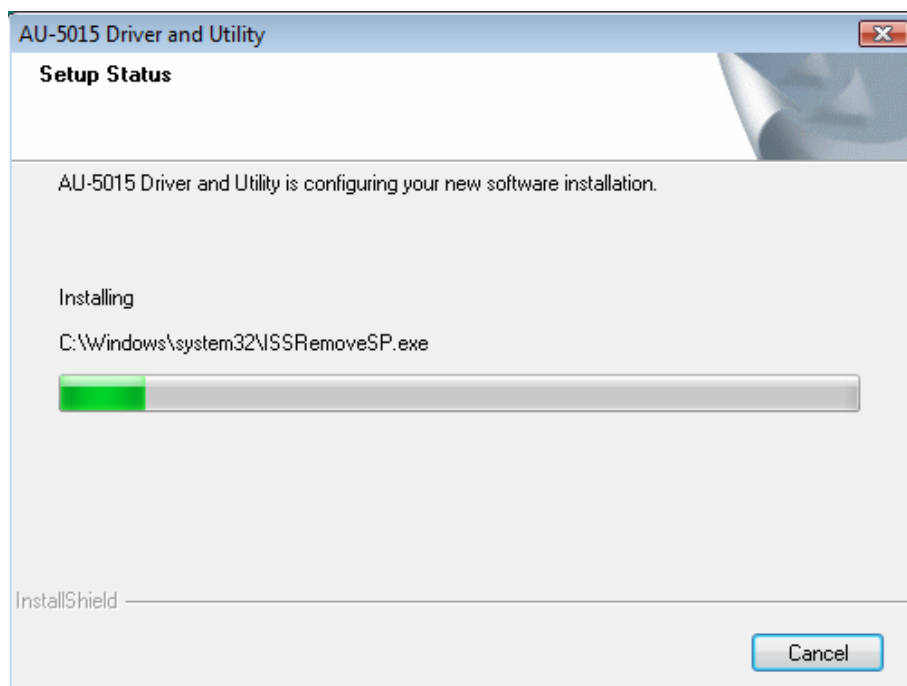
According to FCC 15.407(e), the device is intended to operate in the frequency band of 5.15GHz to 5.25GHz under all conditions of normal operation. Normal operation of this device is restricted to indoor use only to reduce any potential for harmful interference to co-channel MSS operations.

Installing the software of USB Adapter

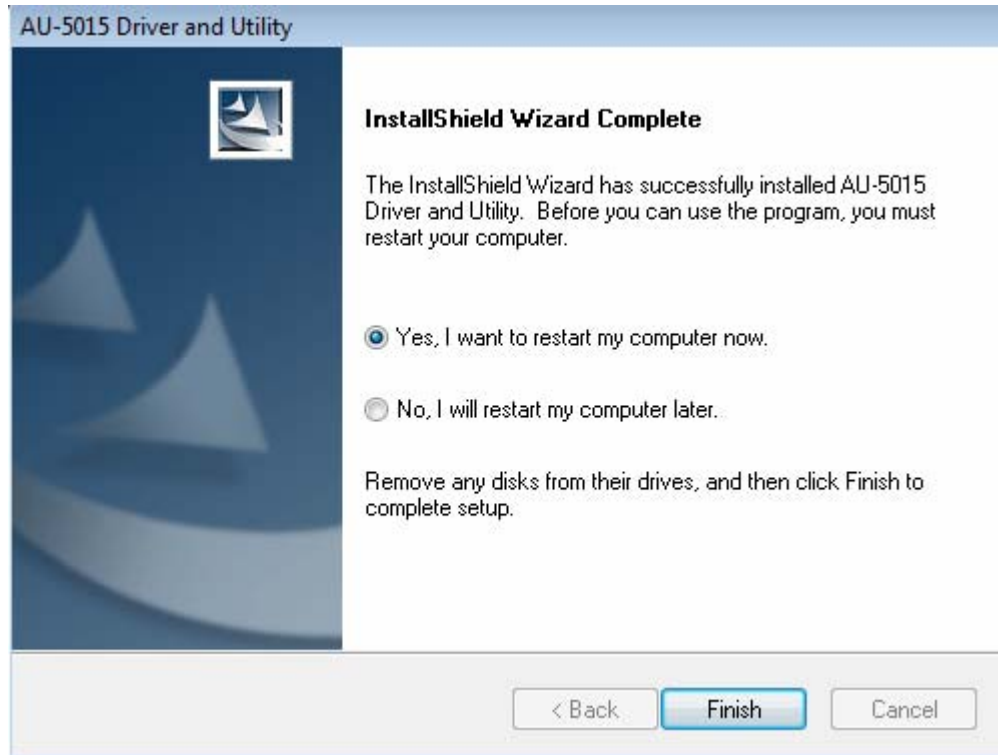
1. Select the setup file to install. The setup program will detect user's language automatically.
2. The setup program will install the driver and utility to computer. Please click the "Next" button to continue.



3. The software installation should begin. This may take a few minutes.



4. Once the installation success, click “Yes” to restart your system (recommended). Otherwise, click “No” to restart your system later.



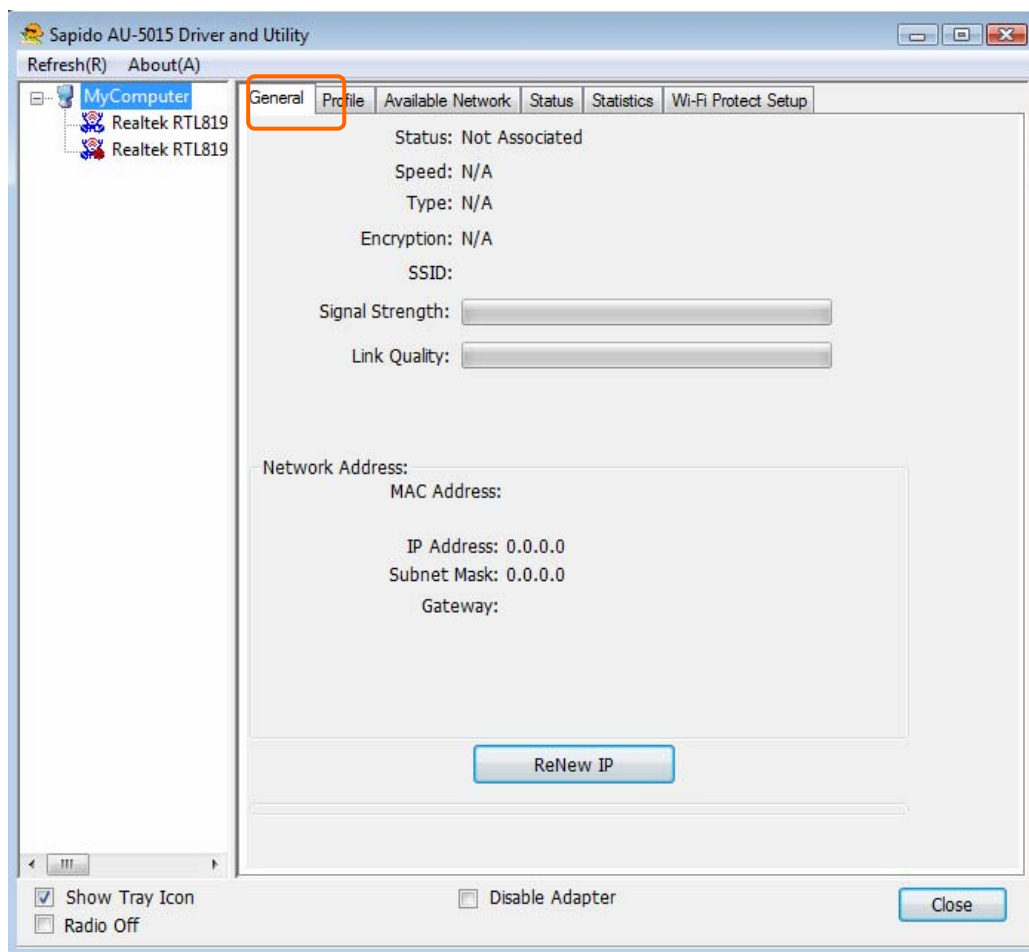
5. Once the installation complete, you may now configure your wireless network.

Configuring your wireless network (with Wireless Utility)

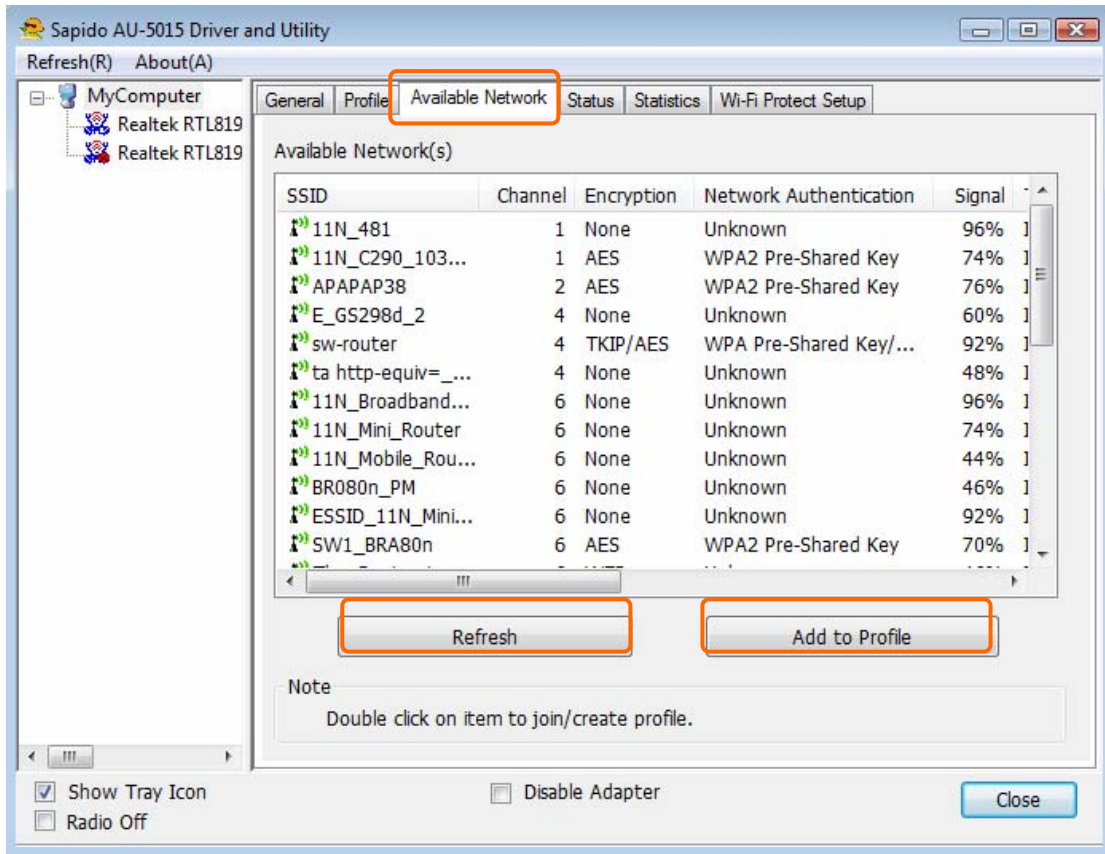
1. Windows XP users, if you chose “Microsoft Zero Configuration Tool” during the software installation please skip to page 11.
2. Double click on the computer with wireless signal icon in your taskbar or the shortcut icon on the desktop.



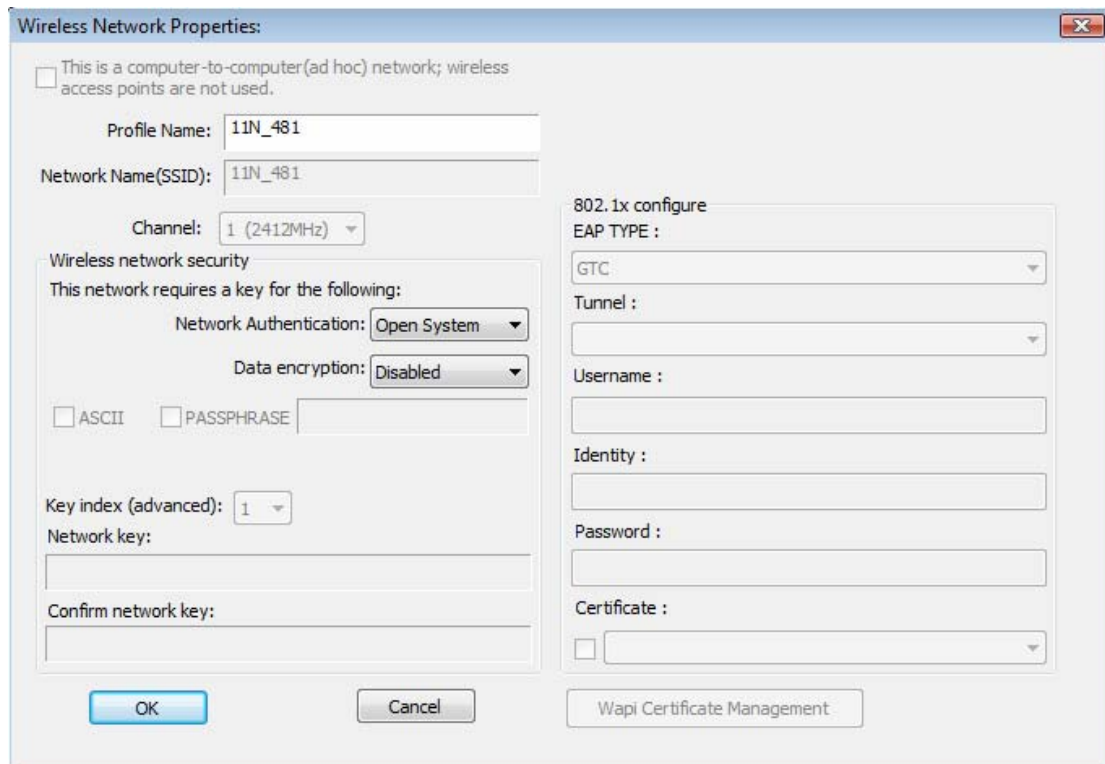
3. It should pop up the Wireless Utility window. And then utility shows the connecting wireless network that connected automatically or was the default network in profile.



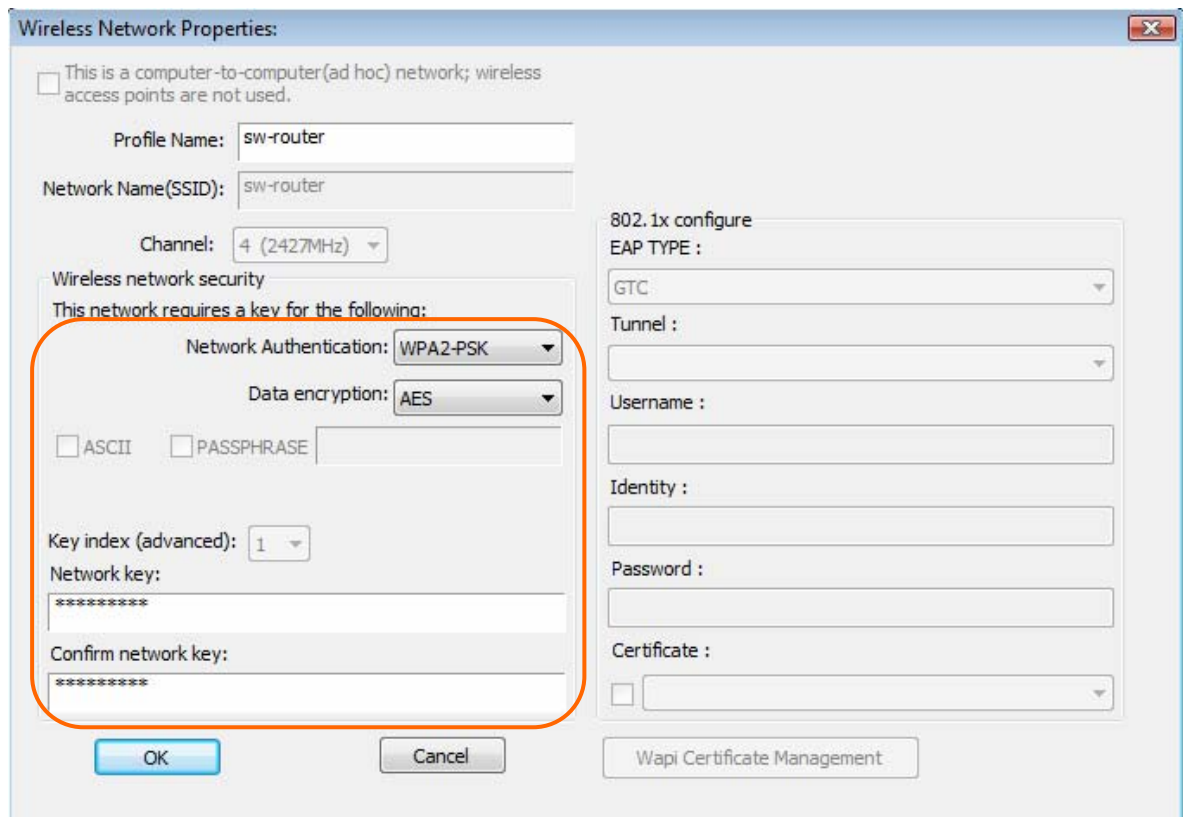
- Click the “Available Network” tab to the wireless network surveying page. Click the “Refresh” button to scan the area for wireless network(s). Once the scan completed, select the desired wireless network from the list and double click it or click the “Add to Profile” button.



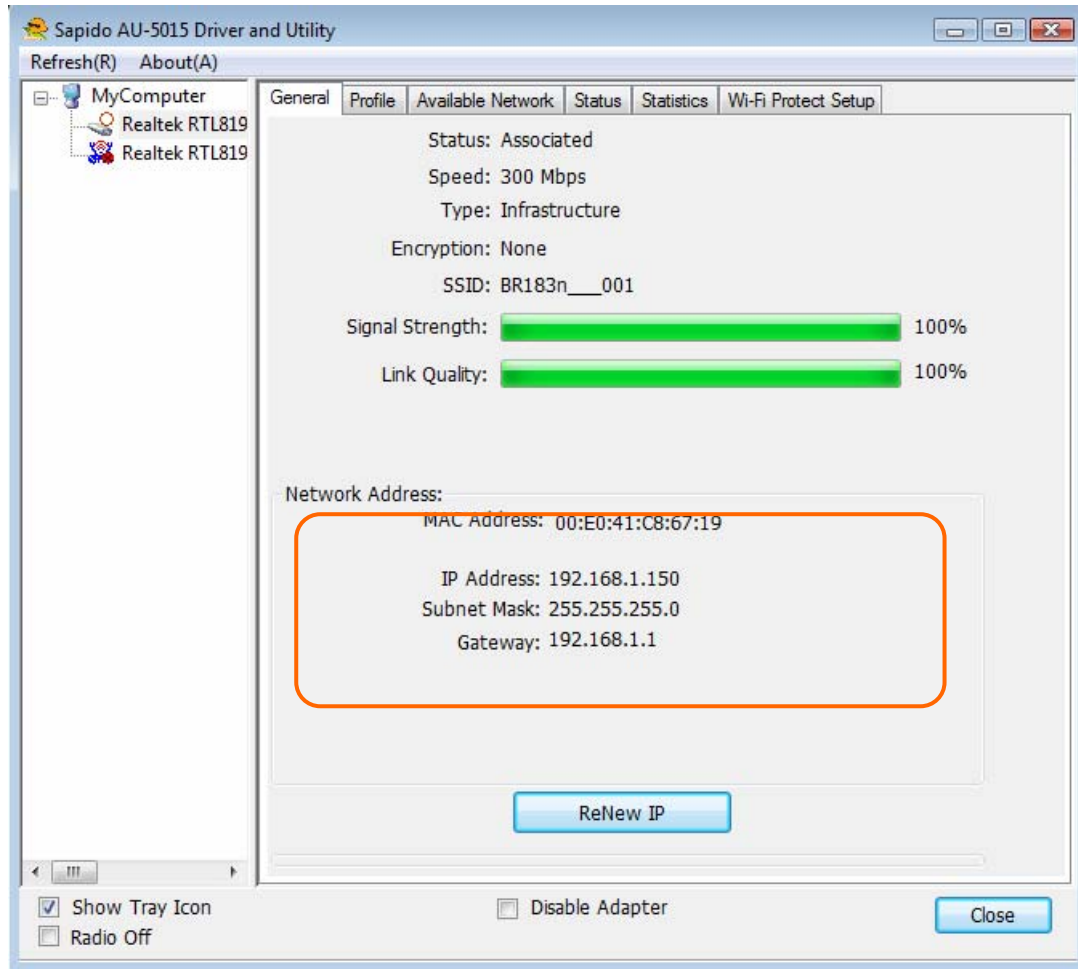
- It should pop up the wireless Network Properties window. If you do not have any wireless security (WEP, WPA, WPA2, and etc.) set on your wireless network, simply click the “OK” button and skip to step7. If you do have wireless securities on your wireless network, configure the security setting in “Wireless network security” column.



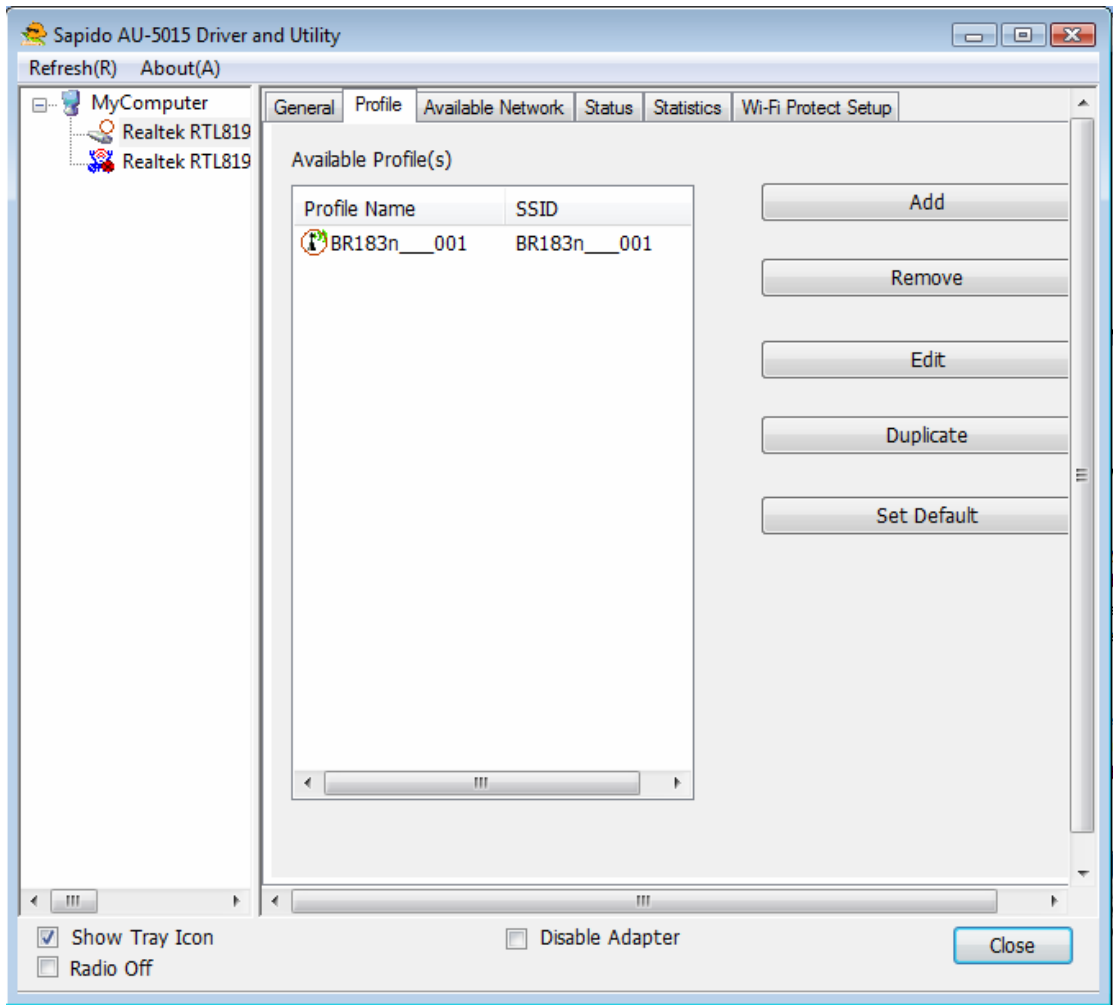
6. Set your wireless securities settings, when it completed, click the “OK” button. Select the Network Authentication and Data encryption to set the encryption type.
 - If you have WEP, typically you select the format and enter your WEP key below the Data encryption.
 - If you have WPA-PSK or WPA2-PSK, typically you only enter your key in the “Network Key” and type again to confirm it.
 - If you have 802.1x configure, typically you only configure your setting in 802.1x configure column.



7. After connected to wireless network, utility will back to “General” page and show the wireless network status. Once the wireless network connected successfully, the Network Address will show the AU-5015 has gotten the IP address from DHCP.

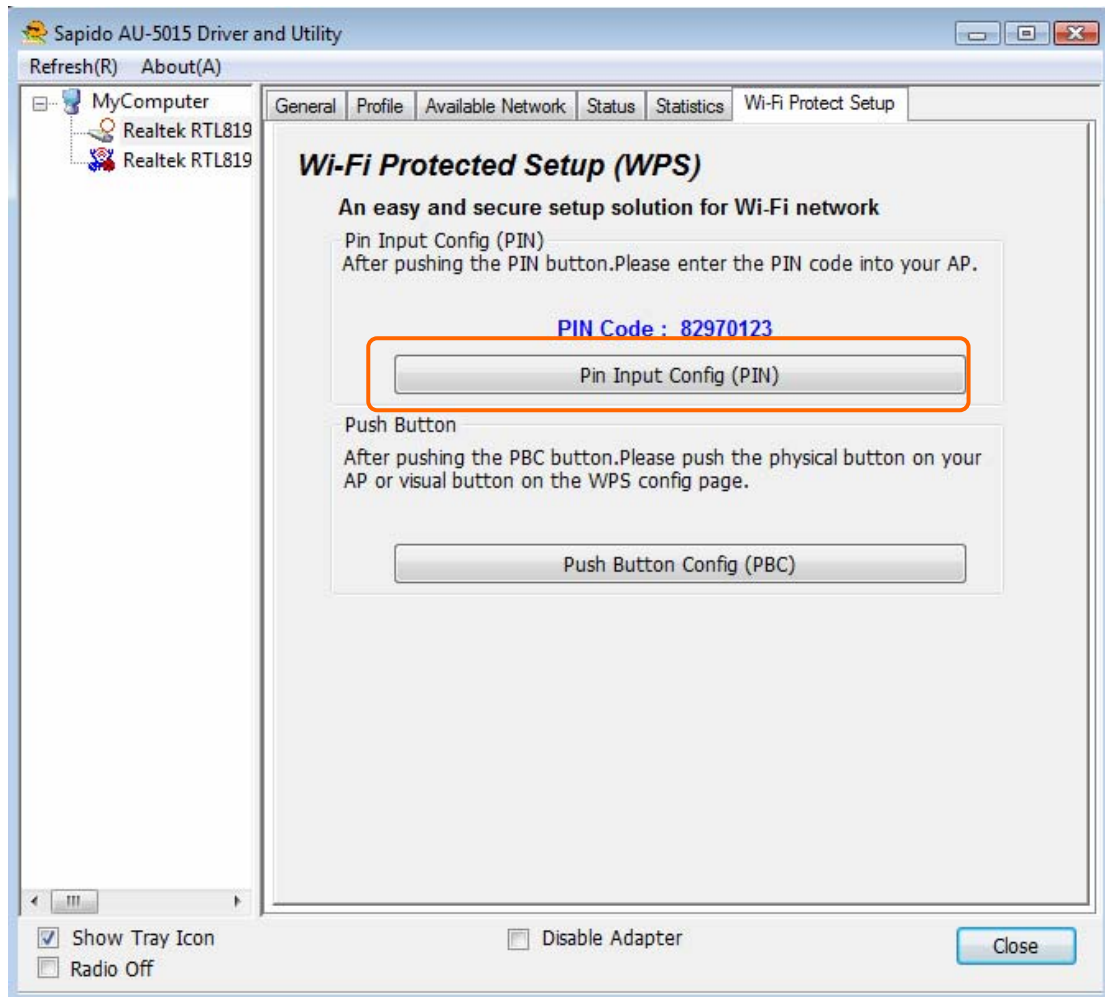


8. Click the "Profile" tab to check the profile page. The wireless network configuration has added in Available Profile(s). It could remove, edit, duplicate and set default the profiles in this page.



Wi-Fi Protect Setup (WPS)

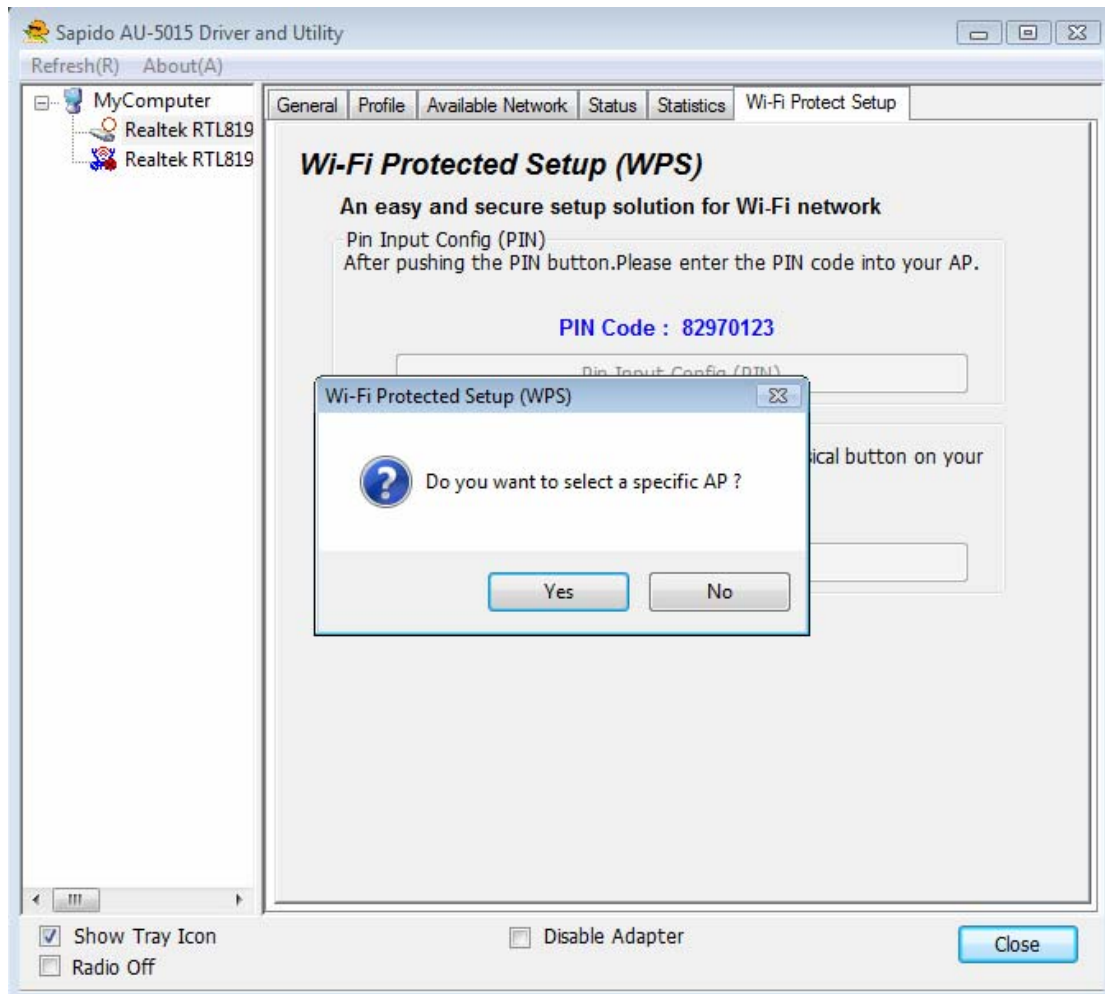
WPS is an easy and secure setup solution for Wi-Fi network. Please click the Wi-Fi Protect Setup tab. AU-5015 has two methods, PIN (Pin Input Config) and PBC (Push Button Config), to setup the network.



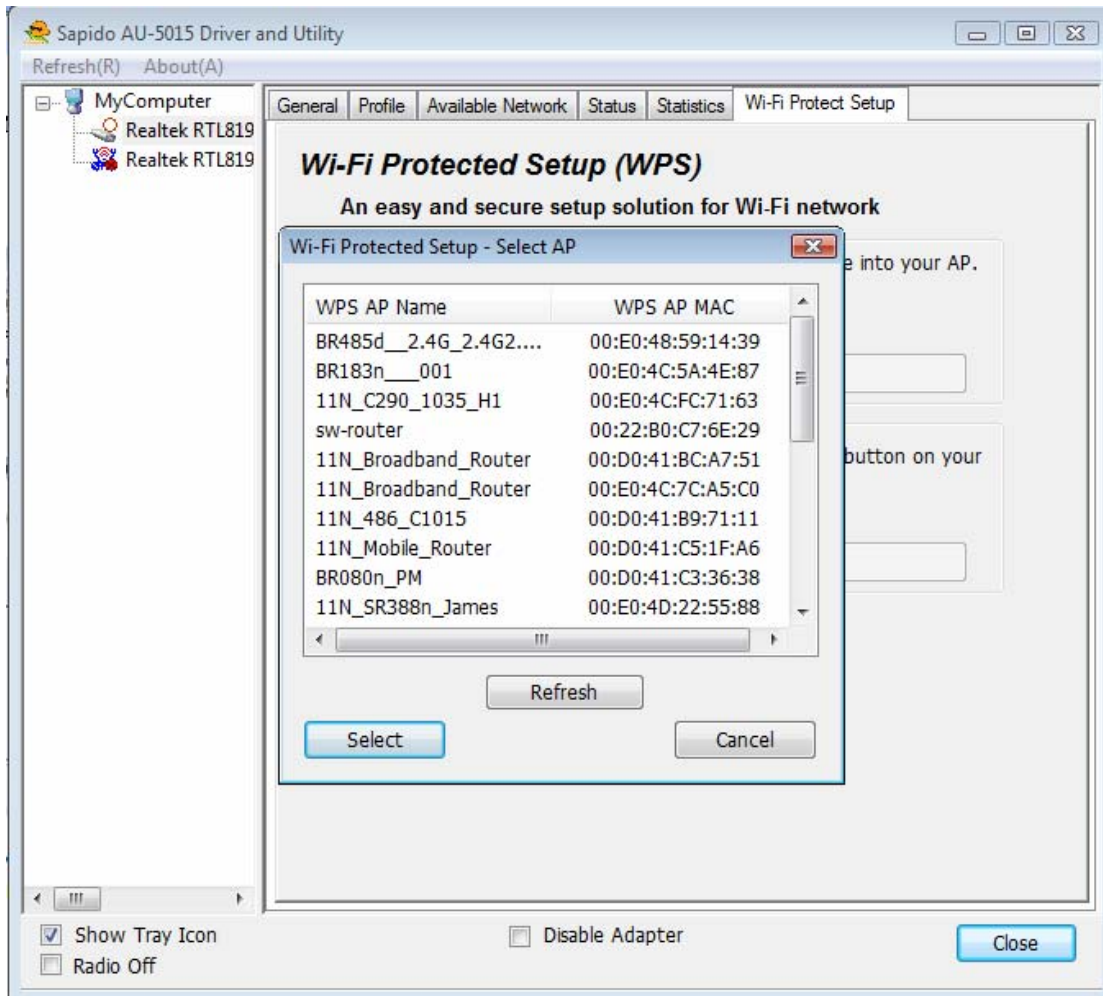
Pin Input Config (PIN)

1. Click on the “Pin Input Config (PIN)” button, and then it should pop up a message box. If you want to connect to a specific AP, please click the “Yes” button. Or please click the “No” button to continue and skip to step3.

Note: Every time you click the tab to change the page, the PIN code will be changed.

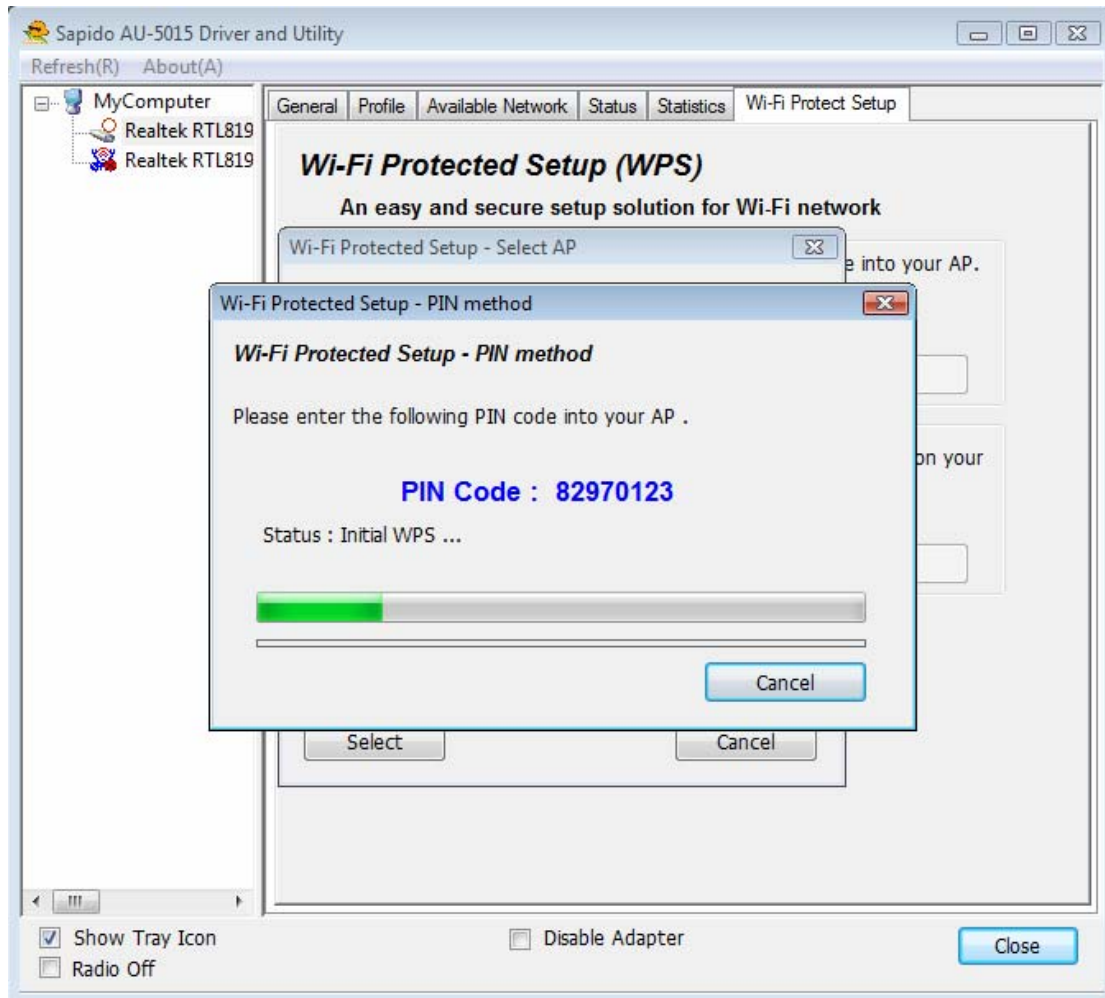


2. Select the specific AP which you want to connect. If you can not find the WPS AP in this page, please click the “Refresh” button. And then click the “Select” button.



- AU-5015 is waiting for the AP to establish the connection. And then enter the PIN code into the AP that you want to connect. For example, the AP uses BR360n to be the connecting device. Enter the PIN code into client pin number and then clicks the "Start PIN" button.

Note: The PIN function in AP should be started before the WPS setup in AU-5015 times out.



Wi-Fi Protected Setup

This page allows you to change the setting for WPS (Wi-Fi Protected Setup). Using this feature could let your wireless client automatically synchronize its setting and connect to the Access Point in a minute without any hassle.

Disable WPS

Apply Change

Reset

Self-PIN Number: 99956042

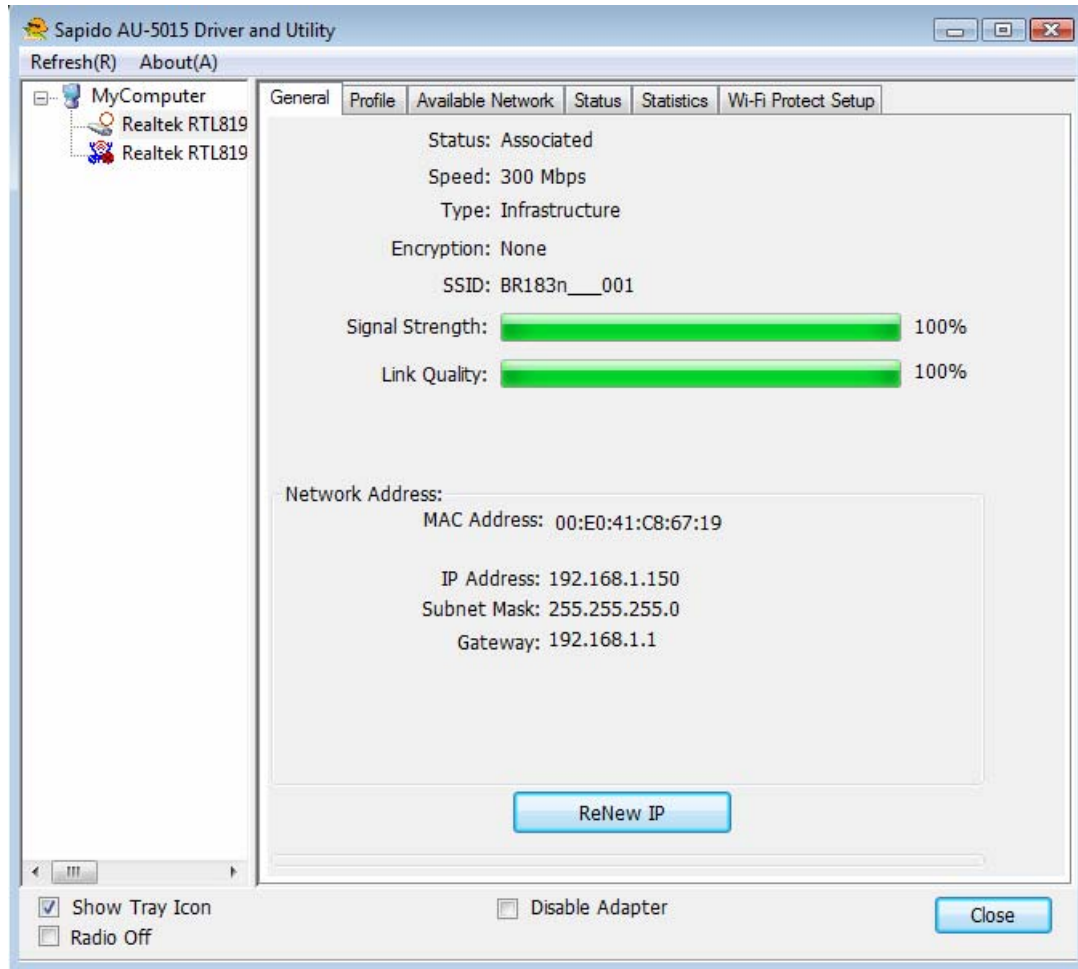
Push Button Configuration:

Client PIN Number:

Current Key Info:

Authentication	Encryption	Key
Open	None	N/A

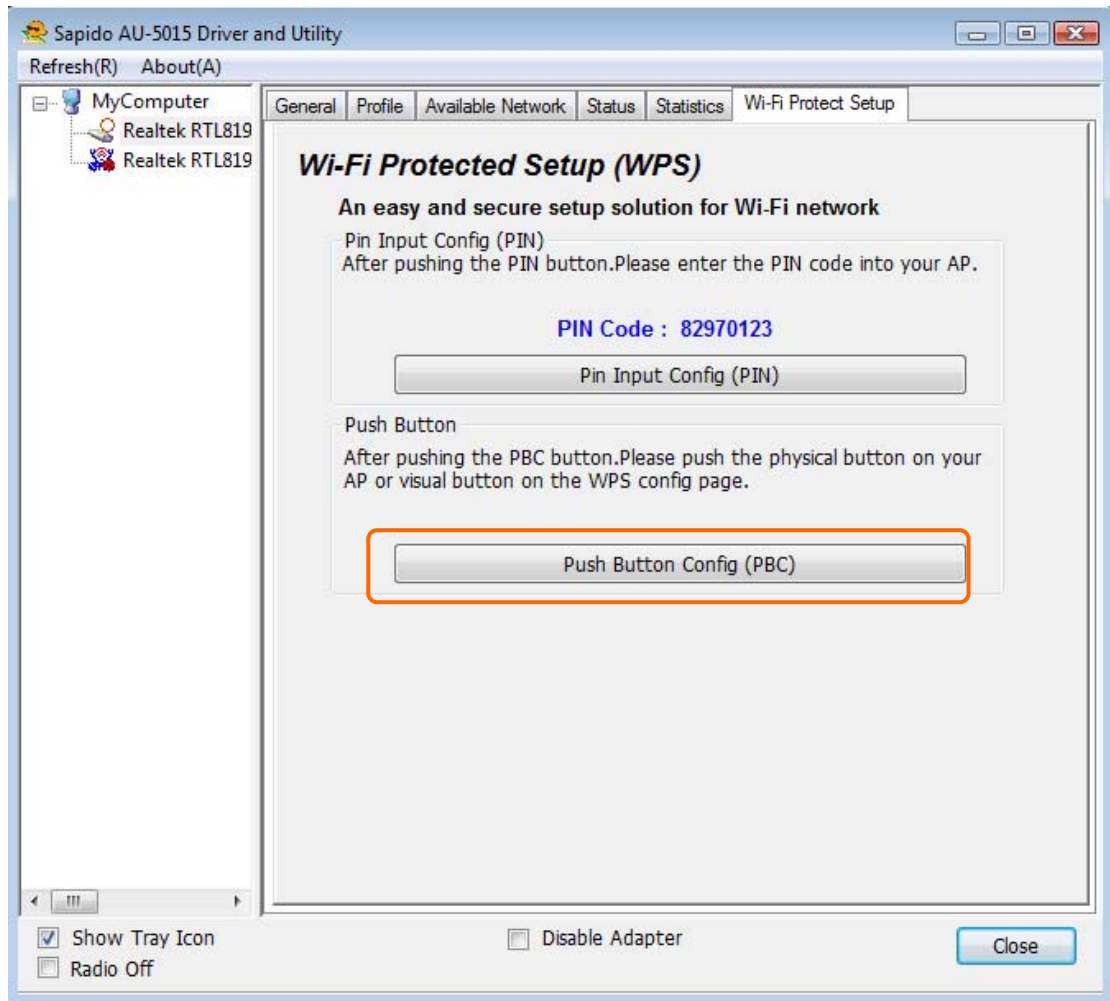
- Once the WPS connected successfully, wireless utility will show the connection status.



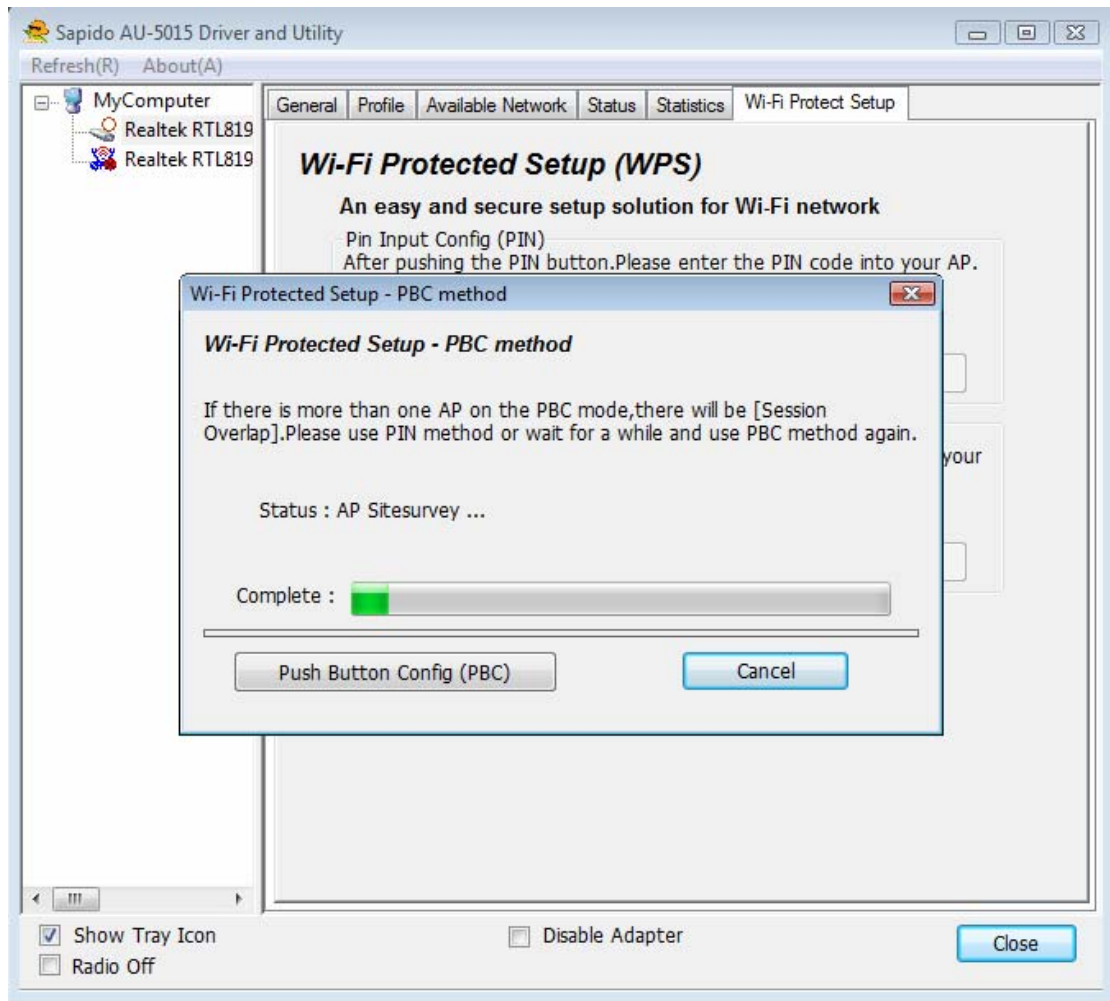
Push Button (PBC)

1. Click on the “Push Button Config (PBC)” button.

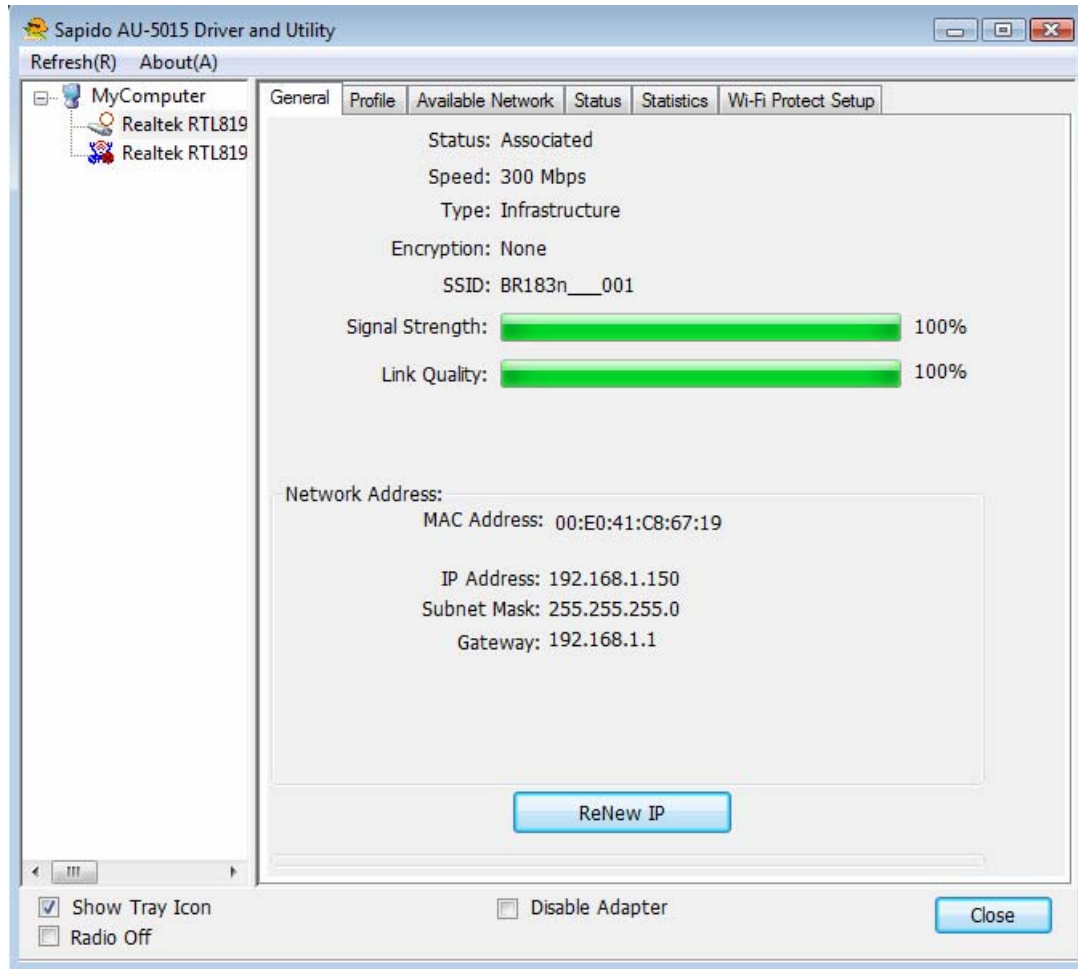
Note: The PBC button can click the visual button on the page or push the physical button on AP.



2. AU-5015 is waiting for the other AP to start the PBC function. The other AP starts the PBC function should be before AU-5015 WPS times out.

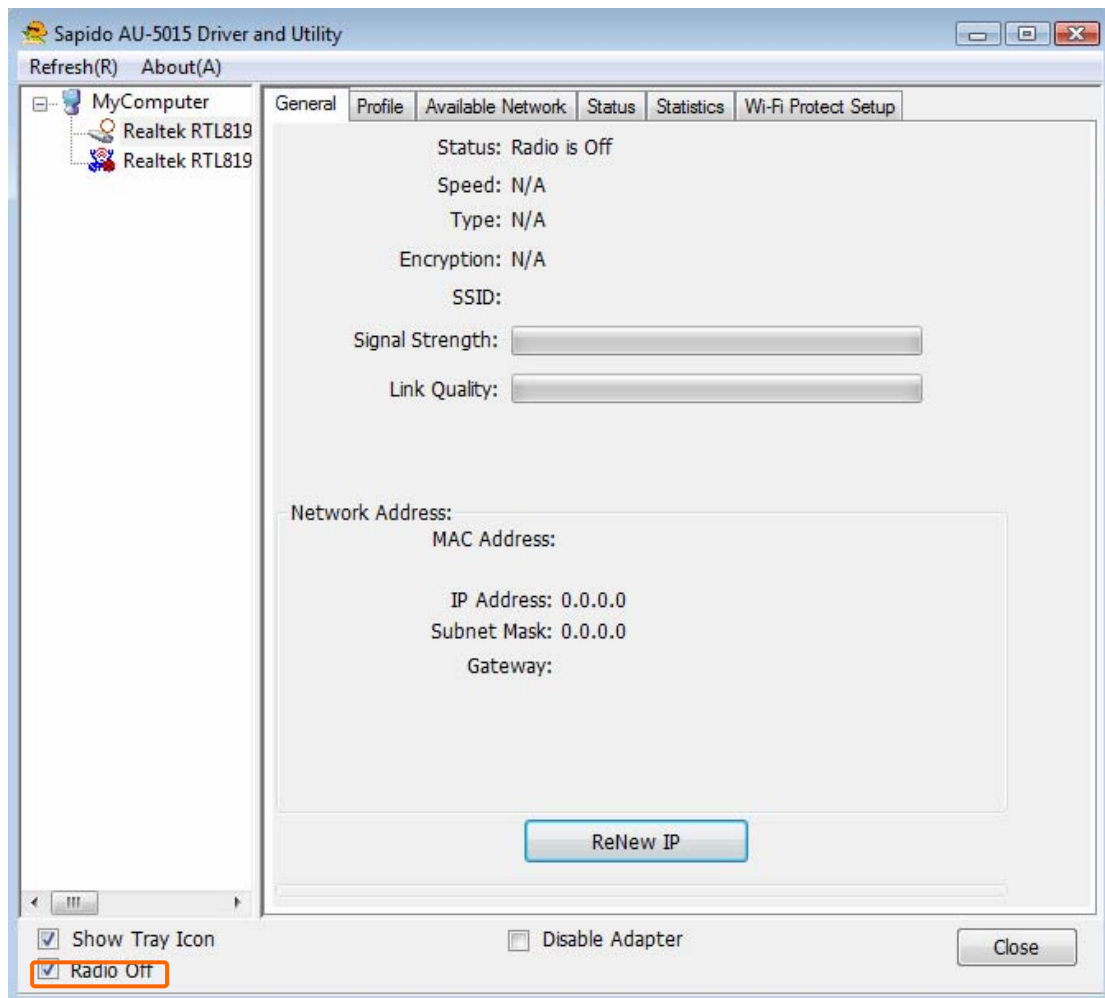


3. Once WPS connected successfully, Wireless Utility will show the connection status.



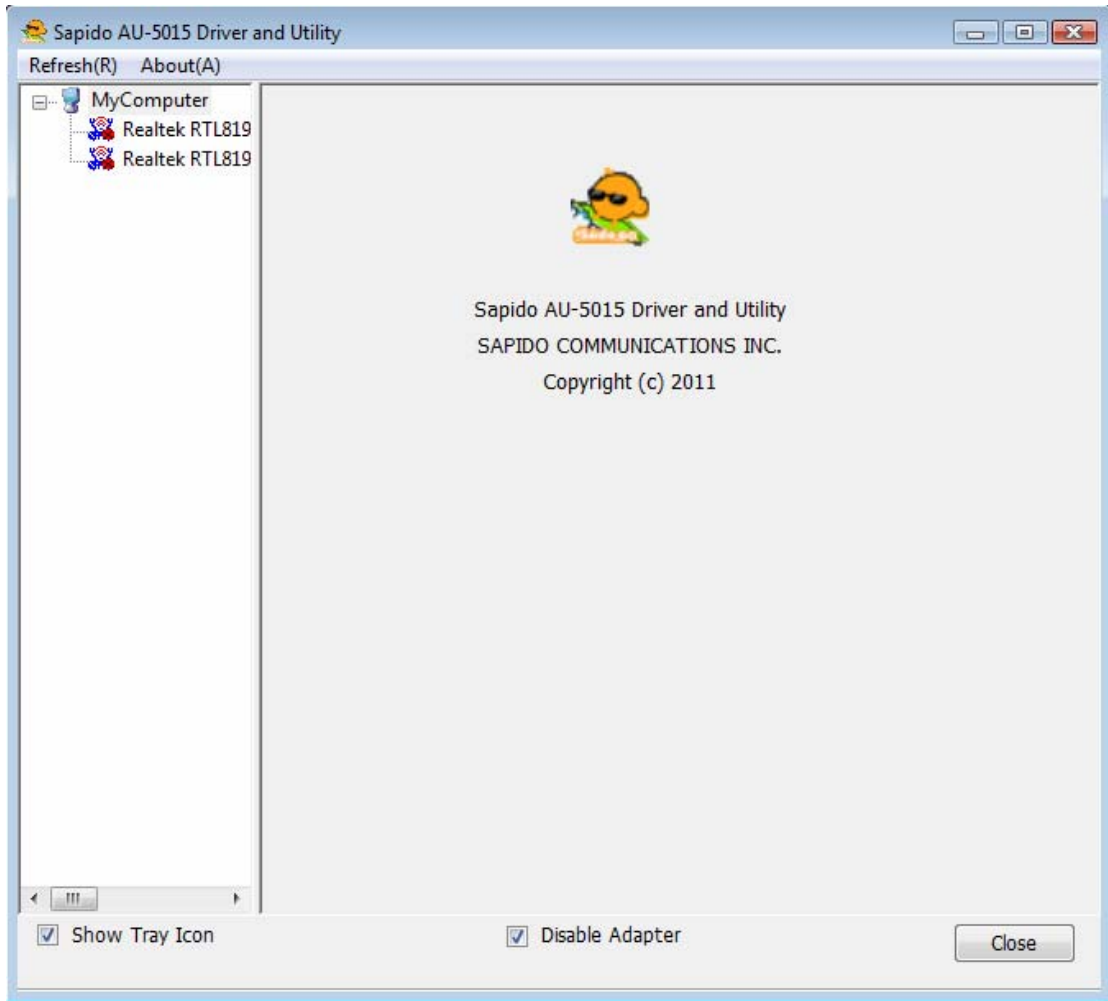
Radio Off

Enable the Radio Off will turn off the radio function. It means AU-5015 will turn off the wireless function. The wireless network connection will be disconnected.



Disable Adapter

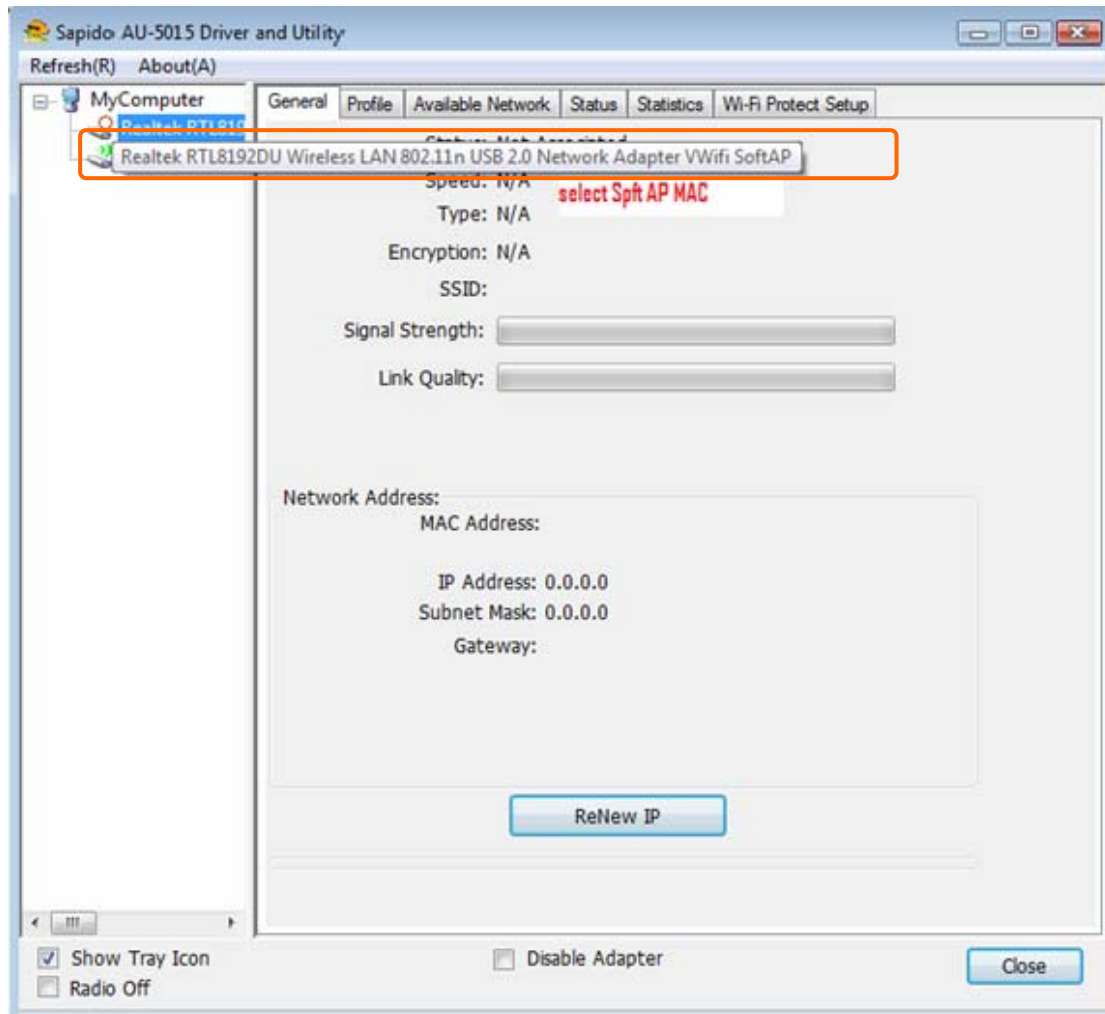
Disable the AU-5015 adapter will turn off the USB adapter function. It means all functions of AU-5015 will be turn off.



Access Point Mode

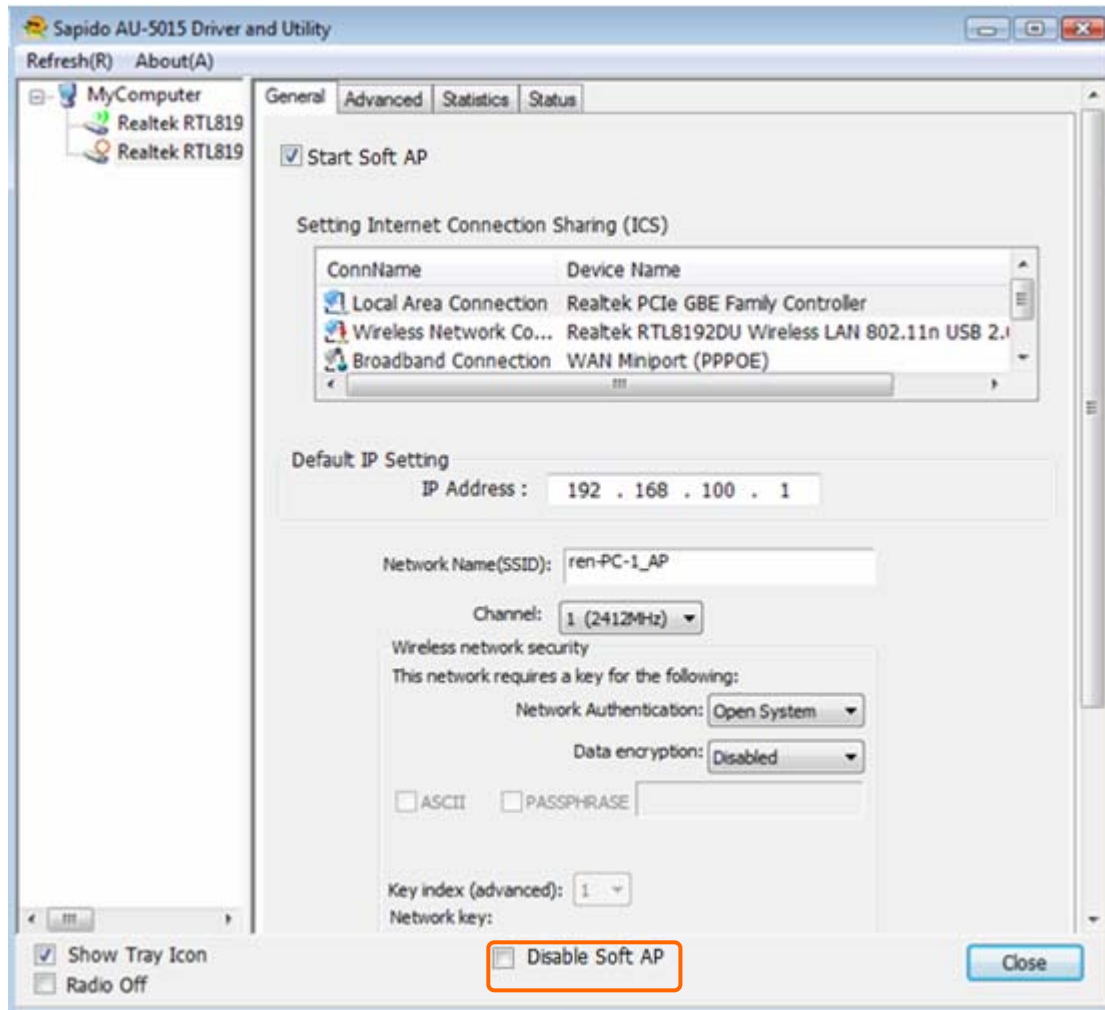
Access Point Mode can share your network to others. In ICS panel users can select which network to be shared.

Mouse double click the SoftAP network adapter to switch to soft AP mode.



Note :

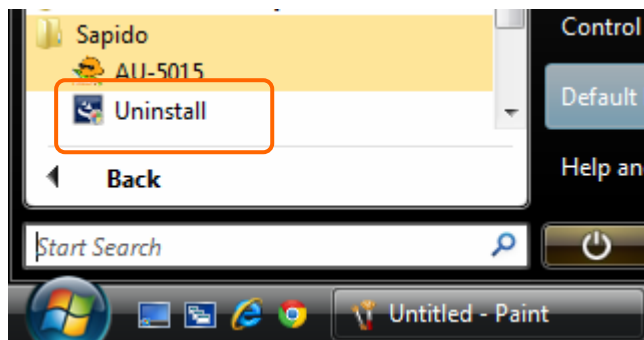
1. When using access point function , please disable softap network adapter (disable " Disable Sort AP")
2. Mouse double click the SoftAP network adapter to switch to soft AP mode and disable "Disable Adapter" to enable soft AP mode
3. If you do not want to use access point mode , please disable softap network adapter (enable "Disable Sort AP") , then dongle can get better performance



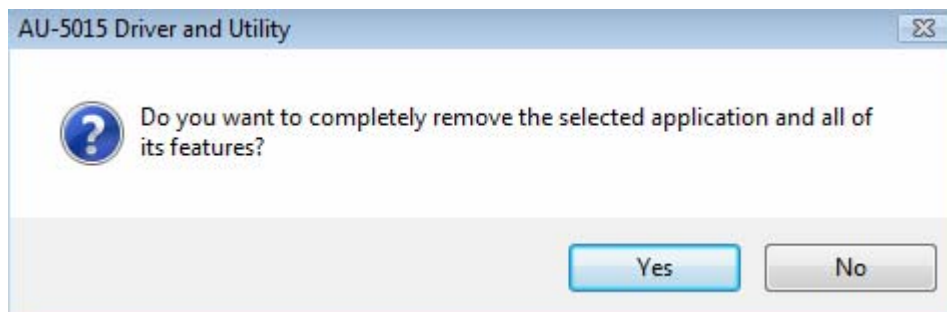
1. **SoftAP Start**
Enable softap function, "Disable Soft AP item" will be selected when disable this item.
2. **Setting Internet Connection Sharing (ICS)**
Mouse click one interface for network sharing
3. **Network Name**
Give a SSID to shared network.
4. **Channel**
Select a channel for shared network.
5. **Network Authentication**
Select authentication type for shared network.
6. **Data encryption**
Select to enable/disable data encryption.
7. **Network Key**
Setup network key for shared network.

Uninstalling the software

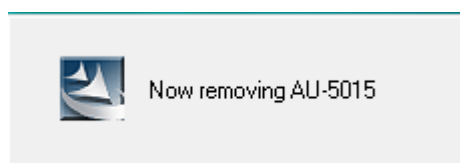
1. Click on your start menu. Next go to “Programs” or “All Programs”. Next go to the folder “Wireless”. Next select “Uninstall”.



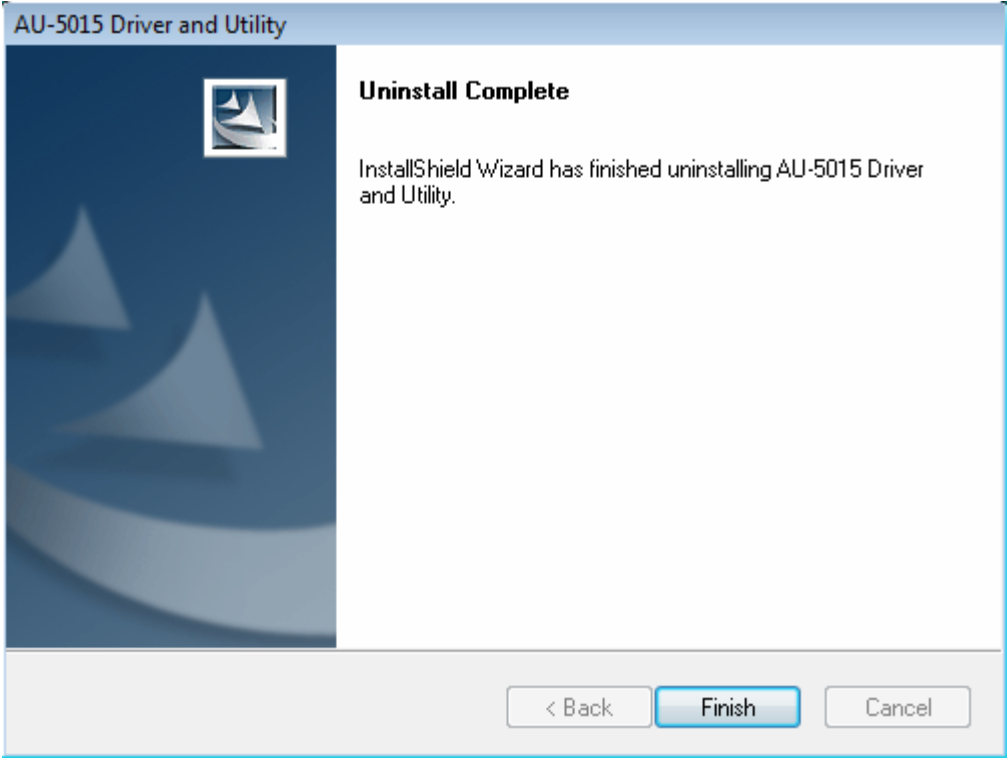
2. The uninstall window should pop up. Click on “Yes” button.



1. The uninstall process should begin and may take a few minutes. Once completed, click “Finish” to close the uninstall window.

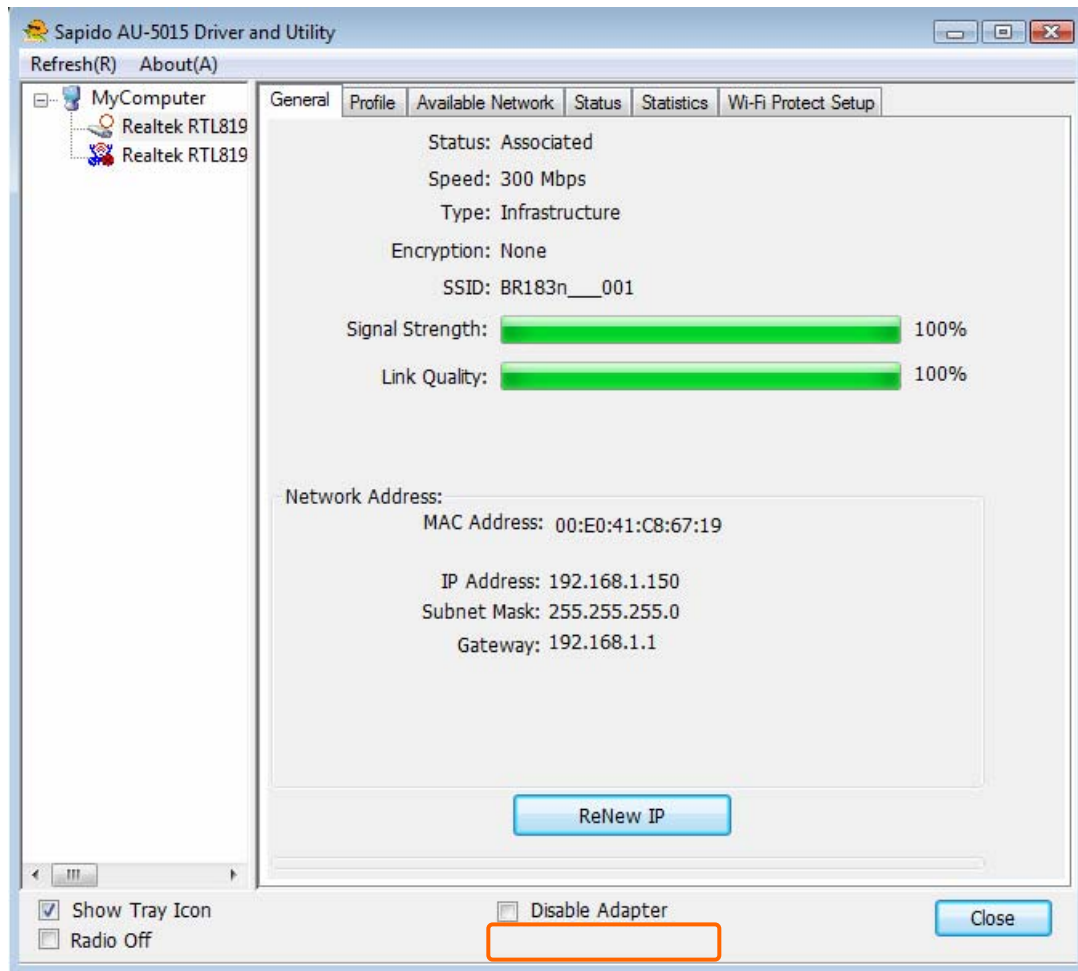


2. Once it's complete, click the “Finish” button to exit the uninstall program.

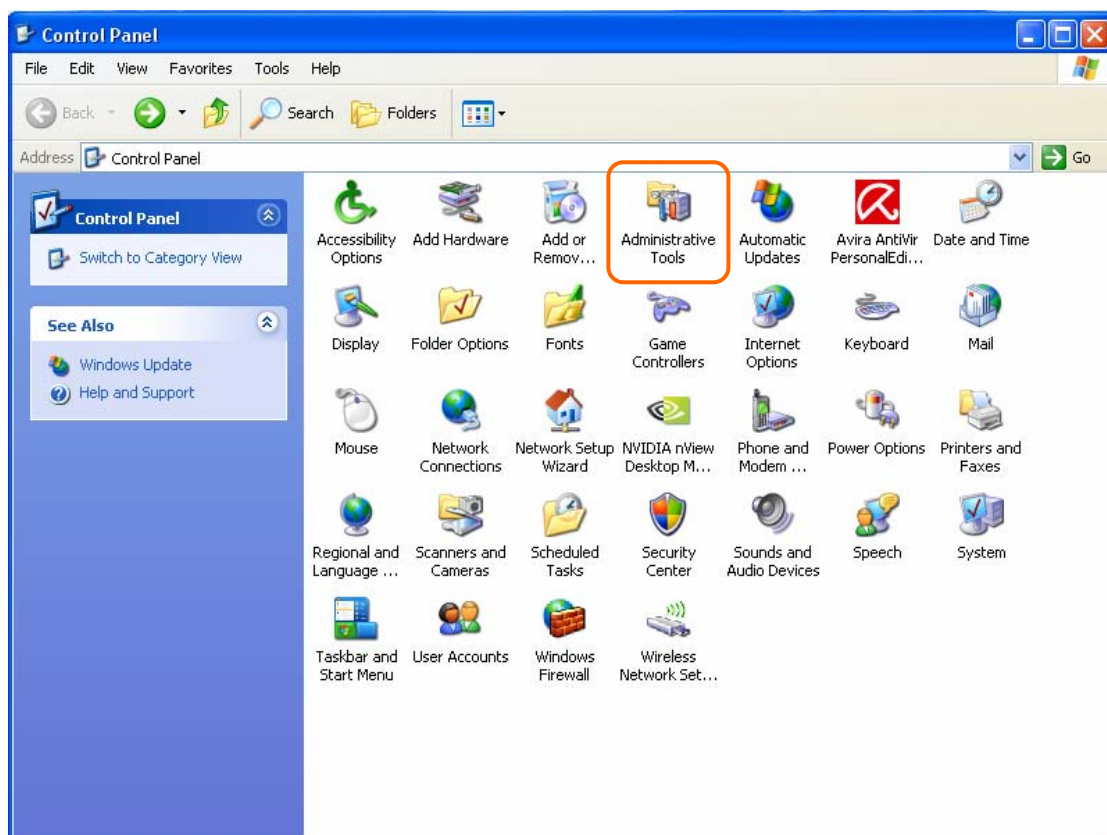
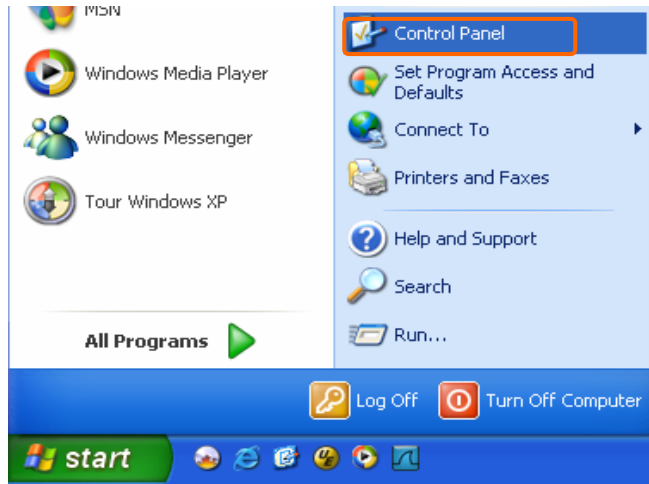


Wireless Zero Configuration Troubleshooting

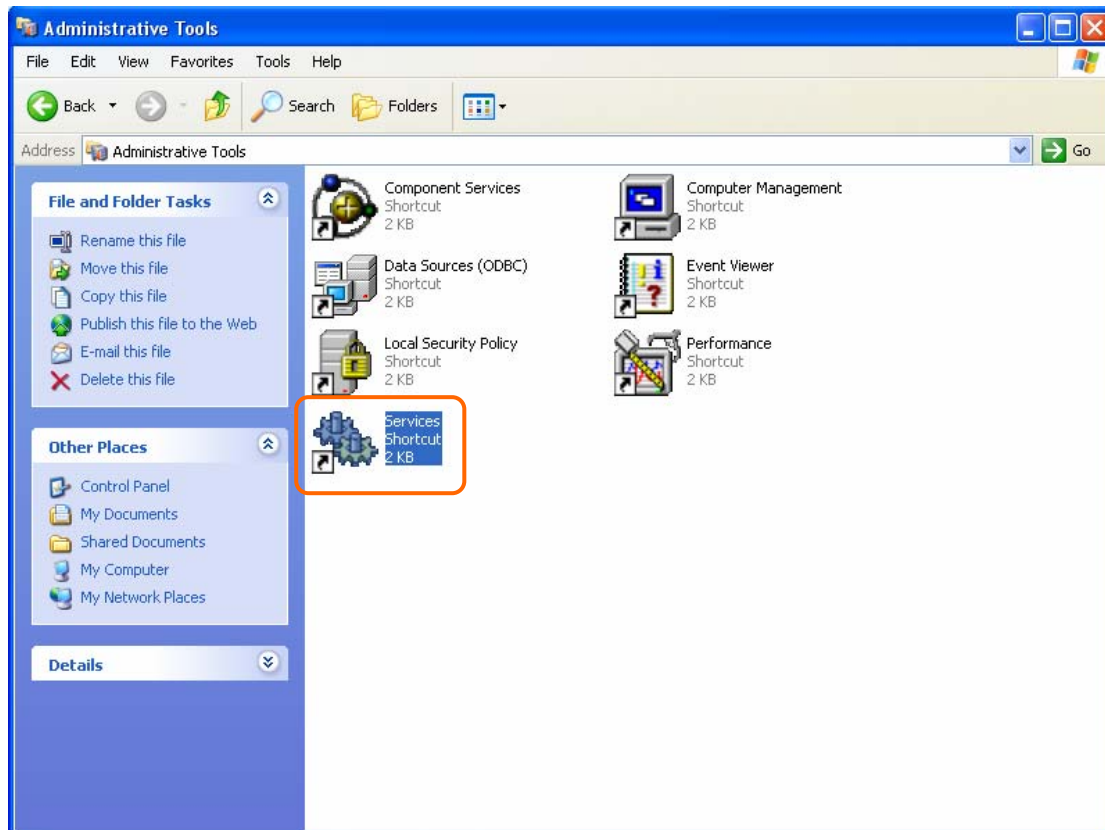
If you are Windows XP user and you can not see the check option of “Windows Zero Config”, such as following figure, please do the following steps.



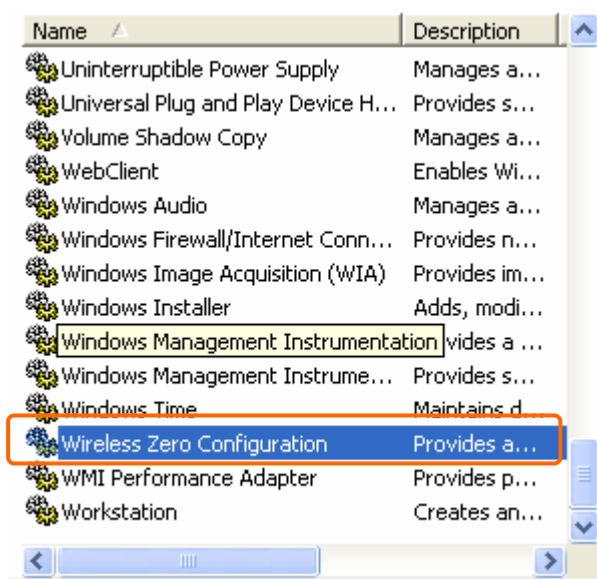
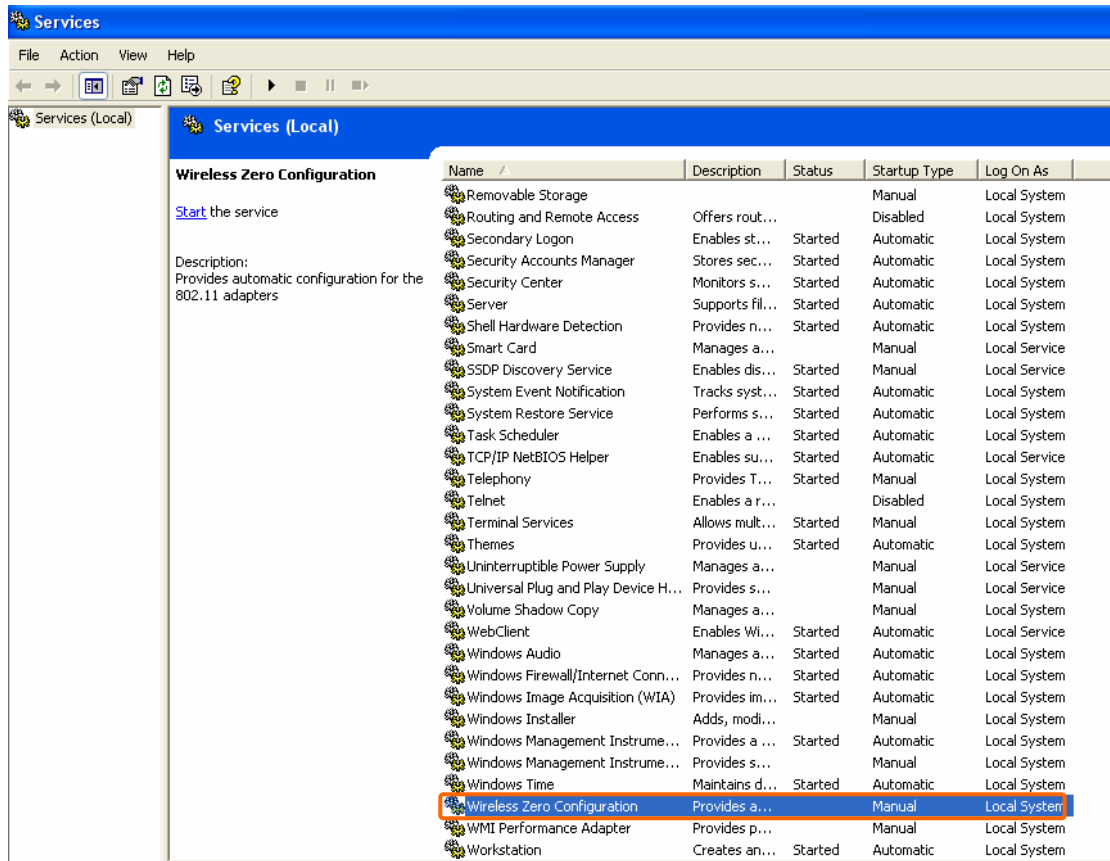
1. Click on your start menu and then click the “control panel” into control panel. Next click the “Administrative Tools”.



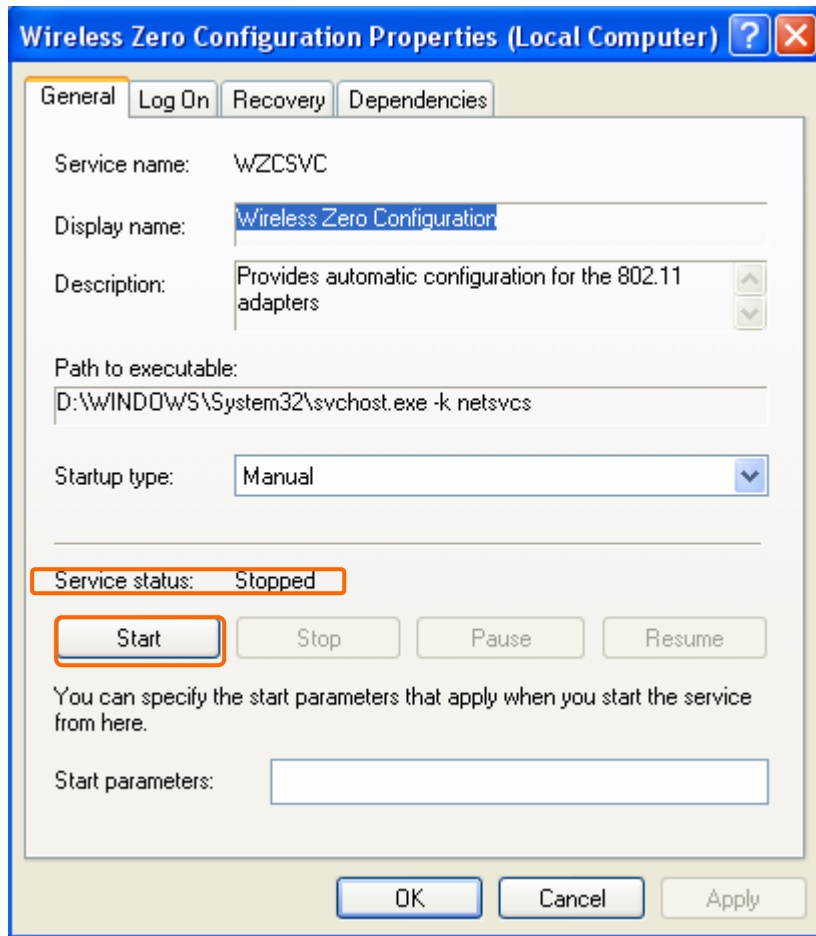
2. Click on the “Services” item.



3. It will pop up the Services window. Select the "Wireless Zero Configuration" or "Wireless Configuration" item and double click it.



- It will pop up the Wireless Zero Configuration Properties window. The “Service status” should be in “Stopped” state now. Click the “Start” button to enable the Wireless Zero Configuration function.



5. Once the setting completes, the “Service status” become to “Started”. Click the “OK” button to finish it and the AU-5015 Wireless Utility can see the check option of “Windows Zero Config”.

