

RB-TX20C Antenna data information

Project:	RB-TX20C
R+D Engineer:	Josep Soler
R+D Reviewer:	Gemma Reverter
Revision:	00
Data:	23/04/2024

INDEX

1. Antenna data	3
2. Radiation diagram	3

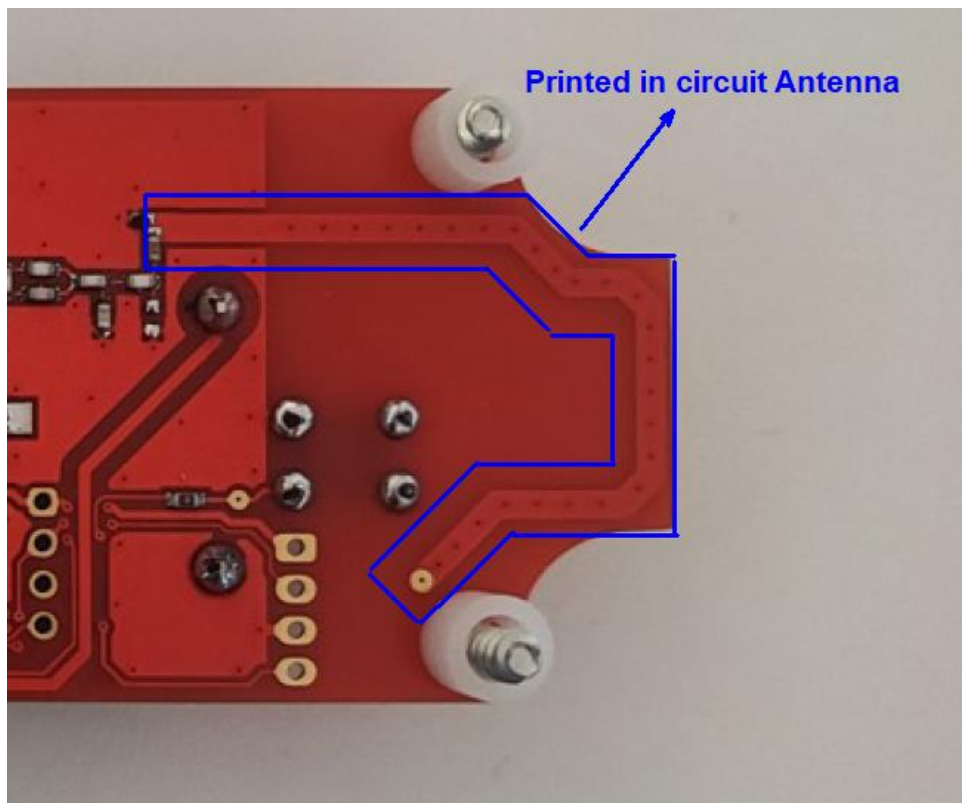
Confidential

1. Antenna data

Type of antenna	Printed in circuit
Antenna gain	0dBi

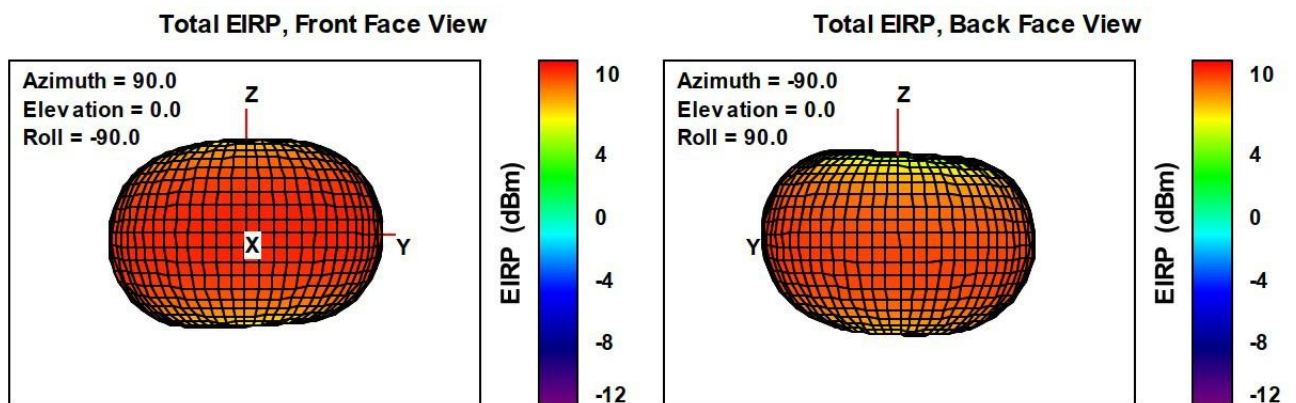
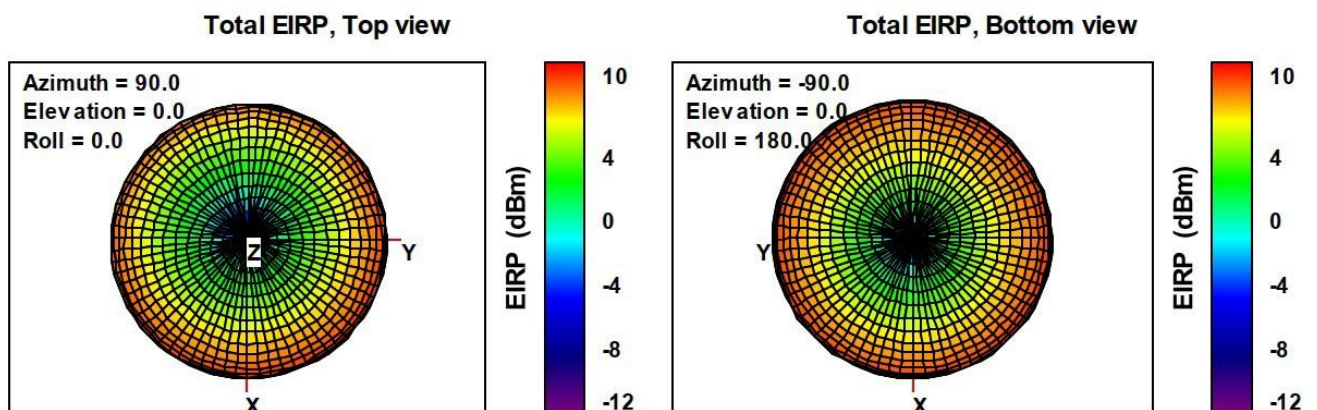
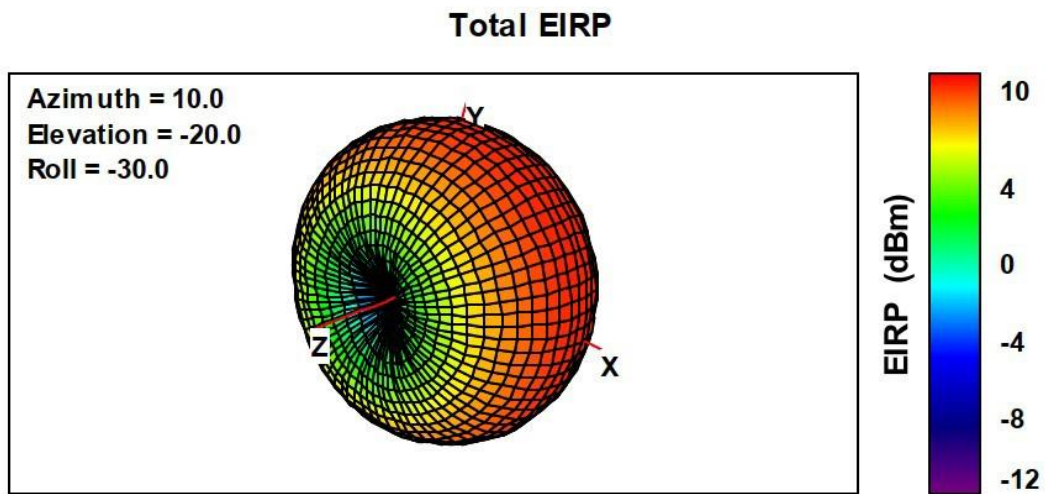
2. Radiation diagram

The EUT was placed inside a fully anechoic test system and hold on a multi- axis positioning system. The EUT was then power supplied and Equivalent Isotropically Radiated Power (EIRP) measurements were performed using a power spectrum analyzer. EIRP measurements were performed at intervals of 15 degrees along the theta and phi axes and at both horizontal and vertical polarizations.

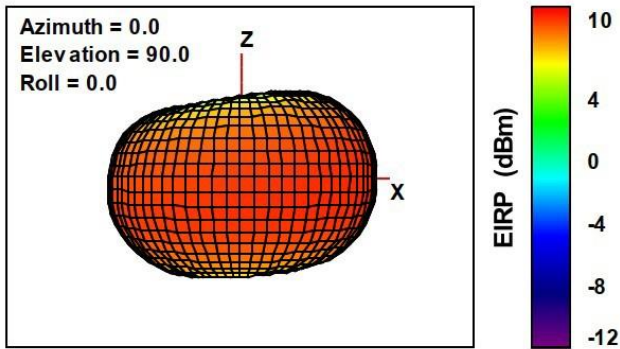


2.1 Frequency band

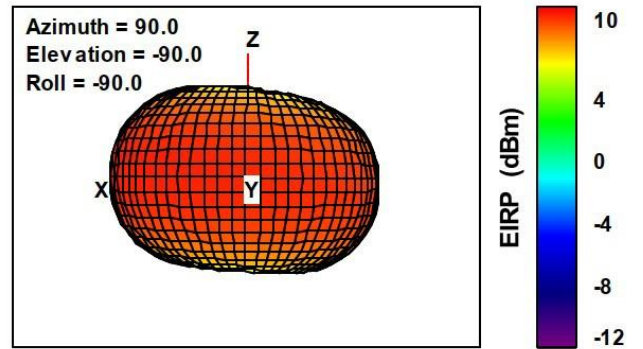
The 3D radiation pattern of the EUT is illustrated in the following figures.



Total EIRP, Left Side View



Total EIRP, Right Side View



2.2 Peak EIRP results

Peak EIRP results for this EUT are presented below.

Frequency (MHz)	Maximum E.I.R.P. measured (dBm)	Input power to the Antenna (dBm)	Calculated Antenna gain (dBi)	Theta Angle (°)	Phi Angle (°)	Polarization
915.65	10.0	10.0	0.0	90	50	Horizontal