

GPRMNHIDIC

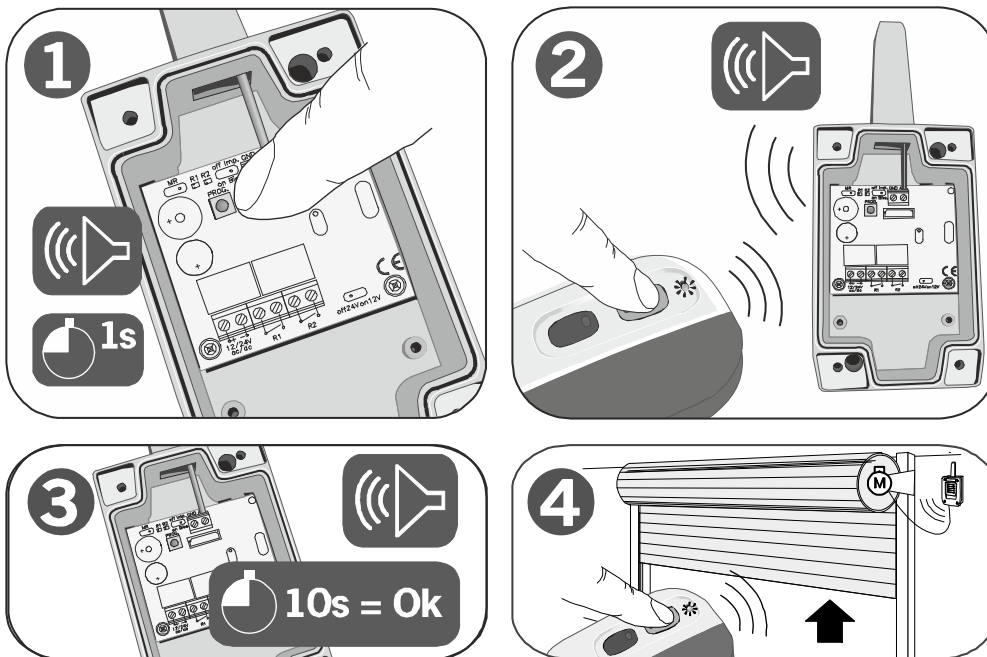
EN / FR



TECHNICAL DATA / DONNÉES TECHNIQUES

Frequency / Fréquence	868,35MHz
Power supply / Alimentation	3Vdc CR2032
Power consumption / Consommation	12mA
Radiated power / Puissance	<1mW
Working temperature / Température fonctionnement	-20°C - +55°C

MANUAL PROGRAMMING / PROGRAMMATION MANUELLE



JCM TECHNOLOGIES, SA,
C/ COSTA D'EN PARATGE, 6, 08500 VIC(BARCELONA), SPAIN

Before disposing of the equipment, remove the batteries and dispose of them at a proper place of disposal.
Avant de mettre l'équipement au rebut, retirez les piles et jetez-les dans un endroit approprié.



FCC COMPLIANCE / CONFORMITÉ FCC

Model / Modèle: GPRMNHIDIC-CAM

FCC ID: U5Z-GOMIN

Regulatory Notice available at: https://cdn.icm-tech.com/downloads/pdf/CE/FCC_Compliance_EN.pdf

FCC - Regulatory Notices

Changes or modifications not expressly approved by the party responsible for compliance could void the user's authority to operate the equipment.

This device complies with part 15 of the FCC Rules.

Operation is subject to the following two conditions:

1. This device may not cause harmful interference.
2. This device must accept any interference received, including interference that may cause undesired operation.

RF exposure safety

This device complies with the FCC RF exposure limits and has been evaluated in compliance with **portable** exposure condition.

There is no limitation as to which distance can be used from the human body.

Class B device notice

Note: This equipment has been tested and found to comply with the limits for a Class B digital device, pursuant to part 15 of the FCC Rules. These limits are designed to provide reasonable protection against harmful interference in a residential installation. This equipment generates, uses and can radiate radio frequency energy and, if not installed and used in accordance with the instructions, may cause harmful interference to radio communications. However, there is no guarantee that interference will not occur in a particular installation. If this equipment does cause harmful interference to radio or television reception, which can be determined by turning the equipment off and on, the user is encouraged to try to correct the interference by one or more of the following measures:

- Reorient or relocate the receiving antenna.
- Increase the separation between the equipment and receiver.
- Connect the equipment into an outlet on a circuit different from that to which the receiver is connected.
- Consult the dealer or an experienced radio/TV technician for help.

ISED COMPLIANCE / CONFORMITÉ ISED

Model / Modèle: GPRMNHIDIC-CAM

IC: 8572A-GOMINI

Regulatory Notice available at: https://cdn.icm-tech.com/downloads/pdf/CE/ISED_Compliance_EN.pdf

ISED - Regulatory Notices

Changes or modifications not expressly approved by the party responsible for compliance could void the user's authority to operate the equipment.

This device complies with ISED license-exempt RSS(s).

Operation is subject to the following two conditions:

1. This device may not cause harmful interference.
2. This device must accept any interference received, including interference that may cause undesired operation.

RF exposure safety

This device complies with the ISED RF exposure limits and has been evaluated in compliance with **portable** exposure condition.

There is no limitation as to which distance can be used from the human body.

CAN ICES-003 (B)

This Class B digital apparatus complies with Canadian ICES-003.

ISED - Avis de Conformité Réglementaire

Les changements ou modifications non expressément approuvés par la partie responsable de la conformité peuvent annuler le droit de l'utilisateur à utiliser l'équipement.

L'équipement est conforme aux CNR d'ISED applicables aux appareils radio exempts de licence.

L'exploitation est autorisée aux deux conditions suivantes:

1. L'appareil ne doit pas produire de brouillage.
2. L'appareil doit accepter tout brouillage radioélectrique subi, même si le brouillage est susceptible d'en compromettre le fonctionnement

Sécurité d'exposition aux RF

Cet appareil est conforme aux limites d'exposition RF d'ISDE et a été évalué conformément aux conditions d'exposition portable.

Il n'y a aucune limitation quant à la distance qui peut être utilisée par rapport au corps humain.

CAN NMB-003 (B)

Cet appareil numérique de classe B est conforme à la norme canadienne NMB-003.

User manual printed inside the cardboard box:

TECHNICAL DATA Freq. 868,35MHz 3Vdc CR2032/12mA
DONNÉES TECHNIQUES e.r.p. <1mW Temp. -20°C-+55°C

COD. 3201578 / 1.0

JCM TECHNOLOGIES, SA
C/ COSTA D'EN PARATGE, 6
08500 VIC(BARCELONA)
SPAIN

ISED COMPLIANCE / CONFORMITÉ ISED
Model / Modèle: GPRMNHIDIC
IC: 8572A-GOMINI
https://cdn.jcm-tech.com/downloads/pdf/CE/ISED_Compliance_EN.pdf

FCC COMPLIANCE / CONFORMITÉ FCC
FCC ID: U5Z-GOMIN
https://cdn.jcm-tech.com/downloads/pdf/CE/FCC_Compliance_EN.pdf

MANUAL PROGRAMMING / PROGRAMMATION MANUELLE

Before disposing of the equipment, remove the batteries and dispose of them at a proper place of disposal. Avant de mettre l'équipement au rebut, retirez les piles et jetez-les dans un endroit approprié.

1

2

3

4

10s = Ok

A

GPRMNHIDIC-CAM

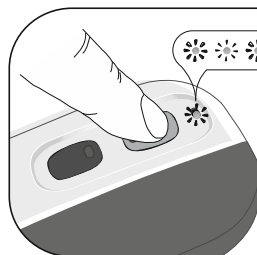
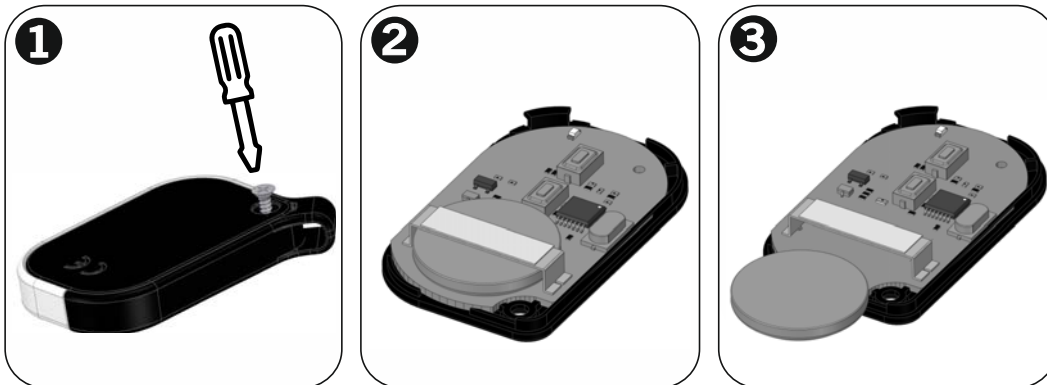
EN / FR



TECHNICAL DATA / DONNÉES TECHNIQUES

Frequency / Fréquence	868,35MHz
Power supply / Alimentation	3Vdc CR2032
Power consumption / Consommation	12mA
Radiated power / Puissance	<1mW
Working temperature / Température fonctionnement	-20°C - +55°C

BATTERY REPLACEMENT / REMPLACEMENT DE LA BATTERIE



**Low battery,
LED blinks**

**Batterie faible,
la LED clignote**

CAMDEN DOOR CONTROLS

5502 Timberlea Blvd, Mississauga, ON L4W 2T7, Canada

Before disposing of the equipment, remove the batteries and dispose of them at a proper place of disposal.
Avant de mettre l'équipement au rebut, retirez les piles et jetez-les dans un endroit approprié.



FCC COMPLIANCE / CONFORMITÉ FCC

Model / Modèle: GPRMNHIDIC-CAM

FCC ID: U5Z-GOMIN

Regulatory Notice available at: https://cdn.motion-line.com/downloads/pdf/CERT/CERT_FCC_Compliance_EN.pdf

FCC - Regulatory Notices

Changes or modifications not expressly approved by the party responsible for compliance could void the user's authority to operate the equipment.

This device complies with part 15 of the FCC Rules.

Operation is subject to the following two conditions:

1. This device may not cause harmful interference.
2. This device must accept any interference received, including interference that may cause undesired operation.

RF exposure safety

This device complies with the FCC RF exposure limits and has been evaluated in compliance with **portable** exposure condition.

There is no limitation as to which distance can be used from the human body.

Class B device notice

Note: This equipment has been tested and found to comply with the limits for a Class B digital device, pursuant to part 15 of the FCC Rules. These limits are designed to provide reasonable protection against harmful interference in a residential installation. This equipment generates, uses and can radiate radio frequency energy and, if not installed and used in accordance with the instructions, may cause harmful interference to radio communications. However, there is no guarantee that interference will not occur in a particular installation. If this equipment does cause harmful interference to radio or television reception, which can be determined by turning the equipment off and on, the user is encouraged to try to correct the interference by one or more of the following measures:

- Reorient or relocate the receiving antenna.
- Increase the separation between the equipment and receiver.
- Connect the equipment into an outlet on a circuit different from that to which the receiver is connected.
- Consult the dealer or an experienced radio/TV technician for help.

ISED COMPLIANCE / CONFORMITÉ ISED

Model / Modèle: GPRMNHIDIC-CAM

IC: 8572A-GOMINI

Regulatory Notice available at: https://cdn.motion-line.com/downloads/pdf/CERT/CERT_ISED_Compliance_EN.pdf

ISED - Regulatory Notices

Changes or modifications not expressly approved by the party responsible for compliance could void the user's authority to operate the equipment.

This device complies with ISED license-exempt RSS(s).

Operation is subject to the following two conditions:

1. This device may not cause harmful interference.
2. This device must accept any interference received, including interference that may cause undesired operation.

RF exposure safety

This device complies with the ISED RF exposure limits and has been evaluated in compliance with **portable** exposure condition.

There is no limitation as to which distance can be used from the human body.

CAN ICES-003 (B)

This Class B digital apparatus complies with Canadian ICES-003.

ISED - Avis de Conformité Réglementaire

Les changements ou modifications non expressément approuvés par la partie responsable de la conformité peuvent annuler le droit de l'utilisateur à utiliser l'équipement.

L'équipement est conforme aux CNR d'ISED applicables aux appareils radio exempts de licence.

L'exploitation est autorisée aux deux conditions suivantes:

1. L'appareil ne doit pas produire de brouillage.
2. L'appareil doit accepter tout brouillage radioélectrique subi, même si le brouillage est susceptible d'en compromettre le fonctionnement

Sécurité d'exposition aux RF

Cet appareil est conforme aux limites d'exposition RF d'ISDE et a été évalué conformément aux conditions d'exposition portable.

Il n'y a aucune limitation quant à la distance qui peut être utilisée par rapport au corps humain.

CAN NMB-003 (B)

Cet appareil numérique de classe B est conforme à la norme canadienne NMB-003.

User manual printed inside the cardboard box:


TECHNICAL DATA Freq. 868,35MHz 3Vdc CR2032/12mA
DONNÉES TECHNIQUES e.r.p. <1mW Temp. -20°C-+55°C


COD. 3201678 / 0.0 CAMDEN DOOR CONTROLS
5502 Timberlea Blvd.
Mississauga, ON L4W 2T7
Canada

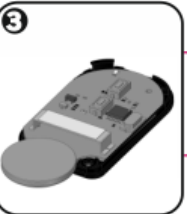
ISED COMPLIANCE / CONFORMITÉ ISED
Model / Modèle: GPRMNHIDIC-CAM
IC: 8572A-GOMINI
https://cdn.motion-line.com/downloads/pdf/CERT/CERT_ISED_Compliance_EN.pdf


FCC COMPLIANCE / CONFORMITÉ FCC
FCC ID: U5Z-GOMIN
https://cdn.motion-line.com/downloads/pdf/CERT/CERT_FCC_Compliance_EN.pdf


BATTERY REPLACEMENT / REMPLACEMENT DE LA BATTERIE

1 

2 

3 



 **Low battery, LED blinks**
Batterie faible, la LED clignote

Before disposing of the equipment, remove the batteries and dispose of them at a proper place or disposal. Avant de mettre l'équipement au rebut, retirez les piles et jetez-les dans un endroit approprié.