

Quick Setup

Get the Alula App

Power Kit Installation

Doorbell Installation

Doorbell Setup



Doorbell (x1)



Mounting Plate (x2)
Pick the one for best surveillance angle.



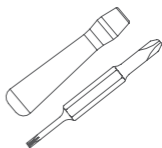
Plate Foam (x1)
Stabilize the mounting plate when installing it on the rough surface.



Power Kit (x1)



Drill Bit (x1)



Screwdriver (x1)



Mounting Screw (x3)



Anchor (x3)



Wire Connector (x4)



Security Screw (x1)



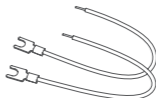
Fixing Screw (x2)



Wire Harness (x1)

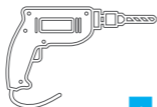


Fuse Wire (x1)



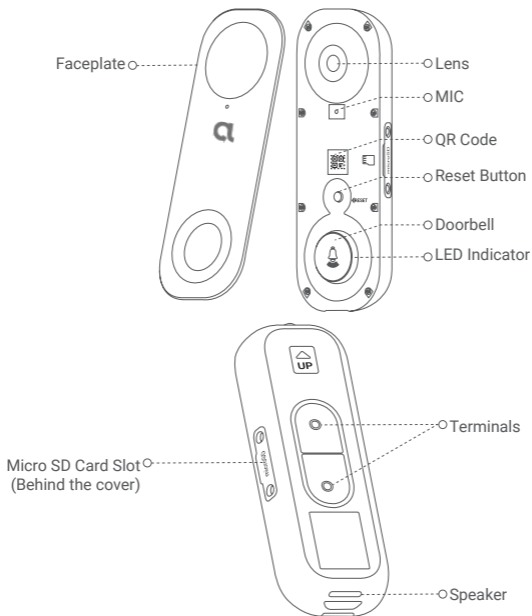
U-shaped Wire (x2)

Tools You May Need



Drill (x1)

Basics



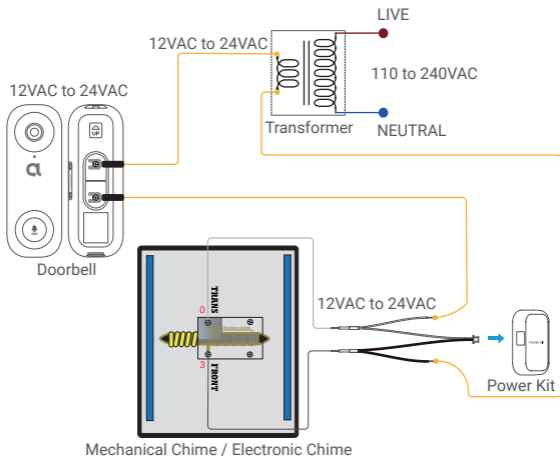
Name	Description
LED Indicator	Red <ul style="list-style-type: none">• Solid Red: Doorbell is starting up.• Fast-flashing Red: Doorbell exception (e.g. Micro SD card error). Blue <ul style="list-style-type: none">• Solid Blue: Doorbell is functioning properly.• Fast-flashing Blue: Doorbell is ready for Wi-Fi connection.
Micro SD Card (sold separately)	Initialize the card in the Alula app before using it.
Reset Button	Hold for 5 seconds to reset and enter to Wi-Fi configuration mode.

Get the Alula App

1. Connect your mobile phone to Wi-Fi (suggested).
2. Search for "Alula" in App Store or Google Play™.
3. Download and install the Alula app.
4. Launch the app, and sign into user account.

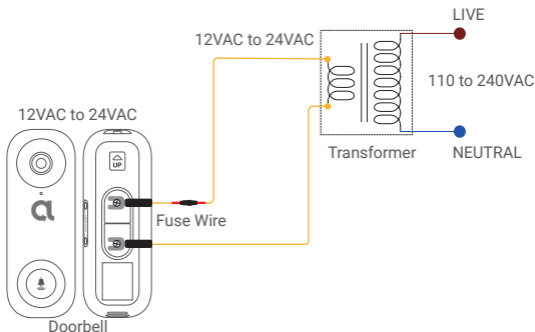
Alula doorbell with chime

- i** If you have mechanical chime or electronic chime installed in your home, install the power kit and doorbell, and connect the wires as shown in the figure below.



Alula doorbell with no chime

- i** If no chime is installed, skip power kit installation, install the doorbell, and connect the wires as shown in the figure below.

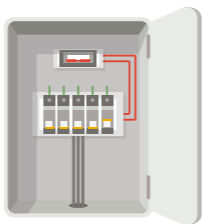


- i** • We recommend installing a new transformer to bring the output 12 to 24 volts.
- Please refer to Quick Start Guide of your chime or transformer for the chime or transformer installing details.

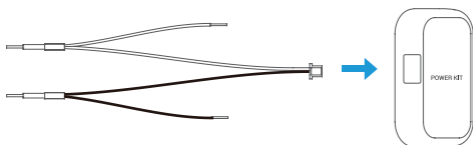
Power Kit Installation

i The power kit ensures that your doorbell gets the power it needs, so be sure to install it before you install your Doorbell.

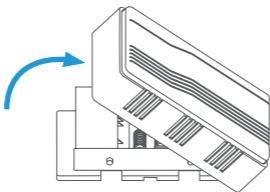
1 Shut off the electricity at the breaker that controls doorbell's circuit.



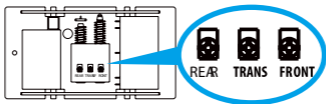
2 Insert one end of the wire harness into the power kit.



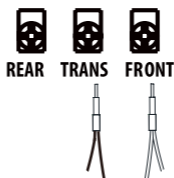
3 Remove the cover from your mechanical chime.



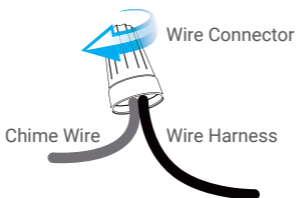
4 Remove the existing chime wires in the terminals named TRANS and FRONT.



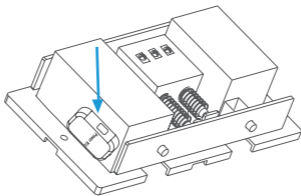
- 5 Connect the wire harness to the chime's terminals named TRANS and FRONT.



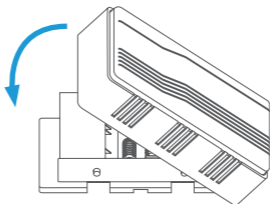
- 6 Insert the existing chime wire and the other end of the wire harness into the wire connector and twist it tightly. Repeat this step with the other chime wire.



- 7 Mount the power kit to the side of the chime.



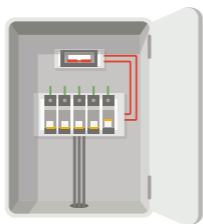
- 8 Put back the chime cover.



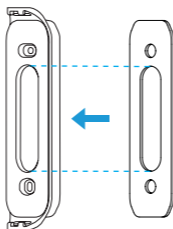
Doorbell Installation

i Recommended Installation Height: 1.2 m (4 ft) above the ground.

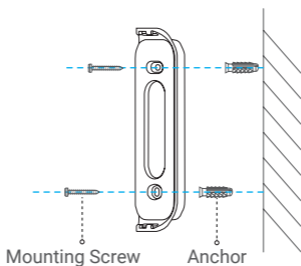
1 Shut off the electricity at the breaker that controls doorbell's circuit.



2 (Optional) When the wall is uneven, paste the plate foam to the mounting plate.



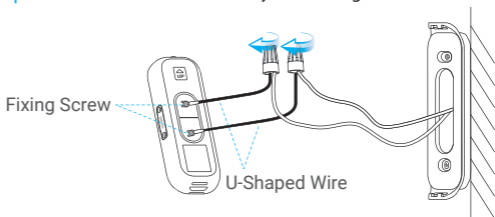
3 Using your mounting plate as a template, mark the location of the two mounting holes on your wall, and insert anchors, then fix the mounting plate to the wall.



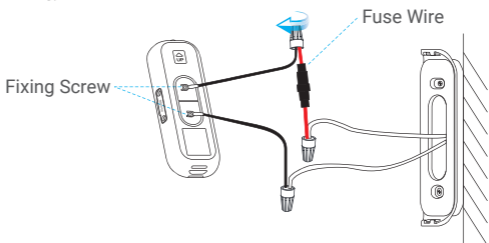
i Recommended Hole Depth: 25 to 30 mm (1 inch to 1.2 inch).

- 4 If you have a chime installed, follow **Option A**;
If not, follow **Option B**.

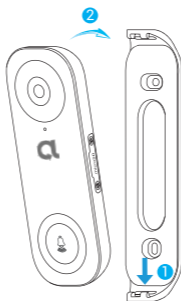
Option A Connect doorbell with your existing doorbell wires.



Option B Connect the fuse wire with your existing doorbell wire.



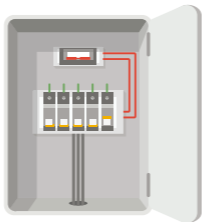
- 5 Install the doorbell to the mounting plate.



- 6 Insert the security screw into the top of the mounting plate to secure the doorbell.



- 7 Restore the electricity at the breaker.

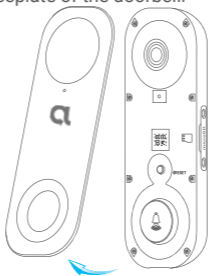


- i** Doorbell is powered on when its indicator flashes blue quickly. If not, make sure your electricity is off and check the wiring. If yes, proceed to doorbell setup.

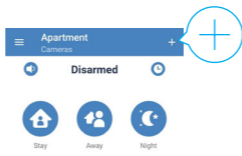
Doorbell Setup

- 1 Add your doorbell to Alula app.

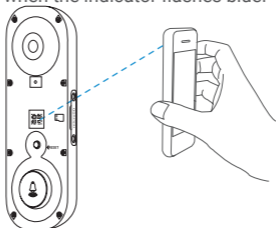
1. Remove the faceplate of the doorbell.



2. Log in to your Alula account.
3. In the Cameras tab, tap “+” on the upper-right corner to go to the Scan QR Code interface.



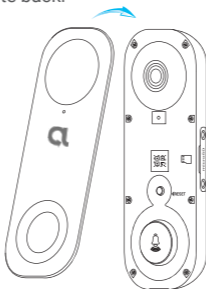
4. Scan the QR code on the device or the cover of this quick start guide when the indicator flashes blue.



5. Follow the wizard to add the doorbell to the Alula app.

i If you want to change the Wi-Fi which your doorbell has connected to, press and hold the reset button for 5s and repeat this part.

6. Put the faceplate back.

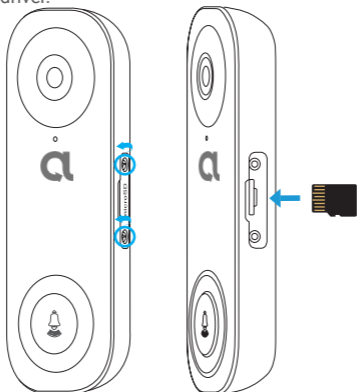


2 Choose the corresponding chime type.

1. In the Alula app, tap the Chime Type in the Device Settings interface to go to the Chime Type interface.
2. Choose the chime type which you have installed in your home.

Install the Micro SD Card

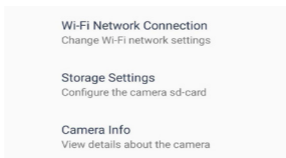
1. Remove the cover on the side of the doorbell with the screwdriver.
2. Insert a micro SD card (sold separately) into the slot until a click.
3. Place the cover back on, and tighten the screws with the screwdriver.



- i** After installing the micro SD card, you should initialize the card in the Alula app before using it.

Initialize Micro SD Card

1. In the Alula app, tap the Storage Settings in the Device Settings interface to check the micro SD card status.



2. If the card status displays as Uninitialized, tap to initialize it.
3. The status will then change to Normal and it can store videos.

1 I have installed my doorbell, but the chime in my home doesn't function.

Please confirm the following details.

1. Make sure the right input voltage range (12V to 24V) has been used. Your doorbell is designed to work with at least 12 volts of AC power, which is in line with a majority of standard doorbell systems. Doorbell running at a lower voltage (or runs on DC rather than AC) may cause chime malfunction.
2. Select the right chime type (same as the product label) in the Alula app.
3. Power on the doorbell and wait for 10 minutes to 3 hours, and then try again.

2 I have failed to connect my doorbell to Wi-Fi.

1. Make sure your doorbell is not blocked by firewall or any limitation in your network.
2. Do not connect too many devices to the router.
3. Make sure the static IP setting is disabled and the router can distribute IP address to your device (DHCP is on).

3 My doorbell is offline frequently.

1. Make sure the doorbell has received strong and stable Wi-Fi signal.
2. Make sure your router and the internet is functional.
3. The doorbell requires at least 2 Mbps uploading speed, please make sure the bandwidth of the network is sufficient, and do not have too many devices connected to the router.
4. If all the troubleshooting techniques listed above does not resolve the problem, please delete the device from your Alula account, reset and re-add.

About this Manual

The Manual includes instructions for using and managing the product. Pictures, charts, images and all other information hereinafter are for description and explanation only. The information contained in the Manual is subject to change, without notice, due to firmware updates or other reasons.

Revision Record

New release – February, 2021

Legal Disclaimer

TO THE MAXIMUM EXTENT PERMITTED BY APPLICABLE LAW, THE PRODUCT DESCRIBED, WITH ITS HARDWARE, SOFTWARE AND FIRMWARE, IS PROVIDED "AS IS", WITH ALL FAULTS AND LIMITATIONS, AND ALULA DISCLAIMS ALL WARRANTIES, EXPRESS, IMPLIED, OR STATUTORY, INCLUDING WITHOUT LIMITATION, ANY IMPLIED WARRANTIES OF MERCHANTABILITY, OR FITNESS FOR A PARTICULAR PURPOSE, AND NON-INFRINGEMENT OF THIRD PARTY. ALULA DISCLAIMS ALL OTHER OBLIGATIONS AND LIABILITIES WITH RESPECT TO ANY DEFECT OR DEFICIENCY APPLICABLE TO OR RESULTING DIRECTLY OR INDIRECTLY FROM THIS PRODUCT. IN NO EVENT WILL ALULA, ITS DIRECTORS, OFFICERS, EMPLOYEES, OR AGENTS BE LIABLE TO YOU FOR ANY INCIDENTAL, CONSEQUENTIAL, PUNITIVE, INDIRECT OR SPECIAL DAMAGES, INCLUDING, BUT NOT LIMITED TO, BUSINESS INTERRUPTION, LOST PROFITS, LOSS OF USE, LOSS OF OPPORTUNITY OR LOSS OF DATA OR DOCUMENTATION, IN CONNECTION WITH THE USE OF THIS PRODUCT, EVEN IF ALULA HAS BEEN ADVISED OF THE POSSIBILITY OF SUCH DAMAGES.

THE MAXIMUM TOTAL LIABILITY OF ALULA, REGARDLESS OF THE FORM OF ACTION OR THE REASON FOR THE RECOVERY, SHALL BE LIMITED TO DIRECT MONETARY NOT TO EXCEED THE ORIGINAL PURCHASE PRICE OF THE PRODUCT.

ALULA IS NOT LIABLE FOR ANY DAMAGE AS THE RESULT OF THE NEGLIGENCE OR WILLFUL MISCONDUCT OF DEALER, INSTALLER, USER OR ANY THIRD PARTY; B) PRODUCT INTERRUPTION OR SERVICE TERMINATION CAUSED BY: (i) IMPROPER INSTALLATION OR USAGE OTHER THAN AS REQUESTED; (ii) MODIFICATION OF THE PRODUCT NOT MADE BY ALULA; (iii) COMBINATION OF THE PRODUCT WITH MATERIALS OTHER THAN AS DIRECTED BY ALULA; (iv) THE PROTECTION OF NATIONAL OR PUBLIC INTERESTS; OR (v) FORCE MAJEURE. IF THIS PRODUCT IS CONNECTED TO THE INTERNET, ALULA DOES NOT TAKE RESPONSIBILITY FOR ABNORMAL OPERATION OF THE PRODUCT, PRIVACY LEAKAGE OR OTHER DAMAGES RESULTING FROM CYBER ATTACK, HACKER ATTACK, VIRUS INSPECTION, OR OTHER INTERNET SECURITY RISKS.

SURVEILLANCE LAWS AND DATA PROTECTION LAWS VARY BY JURISDICTION. PLEASE CHECK ALL RELEVANT LAWS IN YOUR JURISDICTION BEFORE USING THIS PRODUCT IN ORDER TO ENSURE THAT YOUR USE CONFORMS TO APPLICABLE LAW. ALULA SHALL NOT BE LIABLE IN THE EVENT THAT THIS PRODUCT IS USED FOR ANY ILLEGITIMATE PURPOSES.

IN THE EVENT OF ANY CONFLICTS BETWEEN THE FOREGOING AND THE APPLICABLE LAW, THE LATTER PREVAILS.



Quick Start Guide

Scan the QR code with the Alula App to add the device to your account

Please keep QR Code for further reference.

About this Manual

The Manual includes instructions for using and managing the product. Pictures, charts, images and all other information hereinafter are for description and explanation only. The information contained in the Manual is subject to change, without notice, due to firmware updates or other reasons.

Revision Record

New release – February, 2021

Legal Disclaimer

TO THE MAXIMUM EXTENT PERMITTED BY APPLICABLE LAW, THE PRODUCT DESCRIBED, WITH ITS HARDWARE, SOFTWARE AND FIRMWARE, IS PROVIDED "AS IS", WITH ALL FAULTS AND LIMITATIONS, AND ALULA DISCLAIMS ALL WARRANTIES, EXPRESS, IMPLIED, OR STATUTORY, INCLUDING WITHOUT LIMITATION, ANY IMPLIED WARRANTIES OF MERCHANTABILITY, OR FITNESS FOR A PARTICULAR PURPOSE, AND NON-INFRINGEMENT OF THIRD PARTY. ALULA DISCLAIMS ALL OTHER OBLIGATIONS AND LIABILITIES WITH RESPECT TO ANY DEFECT OR DEFICIENCY APPLICABLE TO OR RESULTING DIRECTLY OR INDIRECTLY FROM THIS PRODUCT. IN NO EVENT WILL ALULA, ITS DIRECTORS, OFFICERS, EMPLOYEES, OR AGENTS BE LIABLE TO YOU FOR ANY INCIDENTAL, CONSEQUENTIAL, PUNITIVE, INDIRECT OR SPECIAL DAMAGES, INCLUDING, BUT NOT LIMITED TO, BUSINESS INTERRUPTION, LOST PROFITS, LOSS OF USE, LOSS OF OPPORTUNITY OR LOSS OF DATA OR DOCUMENTATION, IN CONNECTION WITH THE USE OF THIS PRODUCT, EVEN IF ALULA HAS BEEN ADVISED OF THE POSSIBILITY OF SUCH DAMAGES.

THE MAXIMUM TOTAL LIABILITY OF ALULA, REGARDLESS OF THE FORM OF ACTION OR THE REASON FOR THE RECOVERY, SHALL BE LIMITED TO DIRECT MONETARY NOT TO EXCEED THE ORIGINAL PURCHASE PRICE OF THE PRODUCT.

ALULA IS NOT LIABLE FOR ANY DAMAGE AS THE RESULT OF THE NEGLIGENCE OR WILLFUL MISCONDUCT OF DEALER, INSTALLER, USER OR ANY THIRD PARTY; B) PRODUCT INTERRUPTION OR SERVICE TERMINATION CAUSED BY: (i) IMPROPER INSTALLATION OR USAGE OTHER THAN AS REQUESTED; (ii) MODIFICATION OF THE PRODUCT NOT MADE BY ALULA; (iii) COMBINATION OF THE PRODUCT WITH MATERIALS OTHER THAN AS DIRECTED BY ALULA; (iv) THE PROTECTION OF NATIONAL OR PUBLIC INTERESTS; OR (v) FORCE MAJEURE.

IF THIS PRODUCT IS CONNECTED TO THE INTERNET, ALULA DOES NOT TAKE RESPONSIBILITY FOR ABNORMAL OPERATION OF THE PRODUCT, PRIVACY LEAKAGE OR OTHER DAMAGES RESULTING FROM CYBER ATTACK, HACKER ATTACK, VIRUS INSPECTION, OR OTHER INTERNET SECURITY RISKS.

SURVEILLANCE LAWS AND DATA PROTECTION LAWS VARY BY JURISDICTION. PLEASE CHECK ALL RELEVANT LAWS IN YOUR JURISDICTION BEFORE USING THIS PRODUCT IN ORDER TO ENSURE THAT YOUR USE CONFORMS TO APPLICABLE LAW. ALULA SHALL NOT BE LIABLE IN THE EVENT THAT THIS PRODUCT IS USED FOR ANY ILLEGITIMATE PURPOSES.

IN THE EVENT OF ANY CONFLICTS BETWEEN THE FOREGOING AND THE APPLICABLE LAW, THE LATTER PREVAILS.

Regulatory Information

FCC Information

This device complies with Part 15 of the FCC Rules. Operation is subject to the following two conditions:

- (1) This device may not cause harmful interference, and
- (2) This device must accept any interference received, including interference that may cause undesired operation.

Note: This product has been tested and found to comply with the limits for a Class B digital device, pursuant to Part 15 of the FCC Rules. These limits are designed to provide reasonable protection against harmful interference in a residential installation. This product generates, uses, and can radiate radio frequency energy and, if not installed and used in accordance with the instructions, may cause harmful interference to radio communications. However, there is no guarantee that interference will not occur in a particular installation. If this product does cause harmful interference to radio or television reception, which can be determined by turning the equipment off and on, the user is encouraged to try to correct the interference by one or more of the following measures:

- Reorient or relocate the receiving antenna.
- Increase the separation between the equipment and receiver.
- Connect the equipment into an outlet on a circuit different from that to which the receiver is connected.
- Consult the dealer or an experienced radio/TV technician for help.

Please take attention that changes or modification not expressly approved by the party responsible for compliance could void the user's authority to operate the equipment.

This equipment should be installed and operated with a minimum distance 20cm between the radiator and your body.

Industry Canada ICES-003 Compliance

This device meets the CAN ICES-3 (B)/NMB-3(B) standards requirements.

This device complies with Industry Canada licence-exempt RSS standard(s). Operation is subject to the following two conditions:

- (1) this device may not cause interference, and
- (2) this device must accept any interference, including interference that may cause undesired operation of the device.

Under Industry Canada regulations, this radio transmitter may only operate using an antenna of a type and maximum (or lesser) gain approved for the transmitter by Industry Canada. To reduce potential radio interference to other users, the antenna type and its gain should be so chosen that the equivalent isotropically radiated power (e.i.r.p.) is not more than that necessary for successful communication.

This equipment complies with IC RSS-102 radiation exposure limits set forth for an uncontrolled environment. This equipment should be installed and operated with minimum distance 20cm between the radiator & your body.

- (i) the device for operation in the band 5150-5250 MHz is only for indoor use to reduce the potential for harmful interference to co-channel mobile satellite systems;
- (ii) the maximum antenna gain permitted for devices in the bands 5250-5350 MHz shall comply with the e.i.r.p. limit; and
- (iii) the maximum antenna gain permitted for devices in the band 5725-5825 MHz shall comply with the e.i.r.p. limits

specified for point-to-point and non point-to-point operation as appropriate.

Le présent appareil est conforme aux CNR d'Industrie Canada applicables aux appareils radio exempts de licence.

L'exploitation est autorisée aux deux conditions suivantes :

- (1) l'appareil ne doit pas produire de brouillage, et
- (2) l'utilisateur de l'appareil doit accepter tout brouillage radioélectrique subi, même si le brouillage est susceptible d'en compromettre le fonctionnement.

ce matériel est conforme aux limites de dose d'exposition aux rayonnements, FCC / CNR-102 énoncée dans un autre environnement. cette équipement devrait être installé et exploité avec distance minimale de 20 entre le radiateur et votre corps.

- (i) Les dispositifs fonctionnant dans la bande 5150-5250 MHz sont réservés uniquement pour une utilisation à l'intérieur

afin de réduire les risques de brouillage préjudiciable aux systèmes de satellites mobiles utilisant les mêmes canaux.
(ii) le gain d'antenne maximal autorisé pour les appareils dans les bandes 5250-5350 MHz doivent respecter le pire limiter;
et
(iii) le gain d'antenne maximal autorisé pour les appareils dans la bande 5725-5825 MHz doivent respecter le pire limites
spécifiées pour le point-à-point et l'exploitation non point à point, le cas échéant.

Safety Instruction

CAUTION: RISK OF EXPLOSION IF BATTERY IS REPLACED BY AN INCORRECT TYPE.

DISPOSE OF USED BATTERIES ACCORDING TO THE INSTRUCTIONS.

BATTERY IS NOT USER REPLACEABLE.

Due to the product shape and dimension, the name and address of the importer/manufacturere are printed on the package.

Customer Service

For more information, please visit alula.com. Need help?

Please visit alula.com/contact for our local contact details.