



Product Profile

Product Name : Smart Tiny Pet Feeder

Customer Name : NGDISCRO006

Customer Model No. : TBD
(EYENIMAL)

EWIG Model No. : NGDISCRO006

Revision History :

31 Mar 2020 First draft

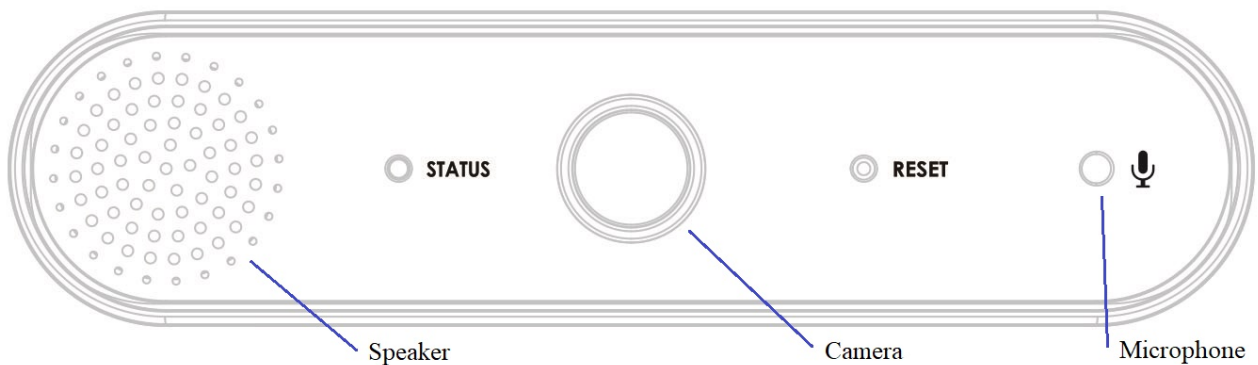
1. Feature list

Feature	Descriptions	Remarks
Wireless communication	Pet feeder connection with Smart device through Wi-Fi network	For control feeding and monitoring through internet (client mode) or direct connect (AP mode) with smart device.
Feeding	- Manually immediate feeding - Programmable feeding schedule on APP	
Camera	View, take photo & video recording	Photo & video will keep in your Smart device
Announcement	Using default sounds or Record your own voice. Total recording time up to 10 sec (To be further confirm)	Say Hello to your pet if you wish.
Microphone	Listening voice from outside	Single way communication ONLY
Speaker	Let you talk back to outside	
Clock	Clock is to be sync & show on Wi-Fi/APP	Clock sync during first Wi-Fi connection (Network time)
Power supply	Power adapter operate: ● Input: 100V~240V AC ● Output: 5VDC 2.4A	Adapter to be consigned by customer.
Feeding on schedule	Max 12 feeding schedules per day	
Feeding quantity	10 grams per drop	Depends on rotator design
Led status indication	Indication for AP mode or Client mode	
10% low food level pre warning	- ON-APP real time low food level indication - Google push low food level notification (during feeding)	
APP platform	iOS and Android version	Five languages could be selected on APP UI depends on language setting on smart device. English, French, German, Italian and Spanish.

This document is strictly confidential and intended solely for EWIG internal reference. Any dissemination, reproduction or distribution of this document other than to its intended recipient is strictly prohibited.

2. Key and Panel Assignment

- 2.1 Reset key – reset to factory default setting
- 2.2 Status Led indicator
 - AP mode
 - Client mode
- 2.3 Microphone – listen voice of your pet
- 2.4 Speaker – send voice to your pet
- 2.5 Camera



3. Product specification

- 3.1 Pet Food Storage and Feeding:
 - 10% low food level detection and indicate on APP (Google Push Notification)
- 3.2 Camera Specifications:
 - 3.2.1 Image Sensor = 1/2.9" CMOS
 - 3.2.2 Maximum sensor resolution = 1920 x 1080p @ 15fps
 - 3.2.3 View Angle = 150deg (Diagonal).
 - 3.2.4 H.264 MJPE format
 - 3.2.5 Steaming: 15fps @ 1080p
 - 3.2.6 Max. 4 users simultaneously monitoring
 - 3.2.7 Video recording (on smart device)
 - 3.2.8 Picture taking (on smart device)
 - 3.2.9 Audio ADPCM
- 3.3 Voice Paging for meal
 - 3.3.1 One factory default meal announcement = 10 seconds;

This document is strictly confidential and intended solely for EWIG internal reference. Any dissemination, reproduction or distribution of this document other than to its intended recipient is strictly prohibited.

3.3.2 User custom recoding announcement = 10 seconds;

3.4 Wi-Fi Range – 20m (line of sight)

IEEE802.11 b/g/n, 2.4GHz.

3.5 Size – L298 x W242 x H???mm **TBC**

3.6 Weight - **TBC**

3.7 Power – AC/DC adaptor: Input 100~240V ac, Output 5V, 2.4A.

4. Product approval

4.1 CE, FCC, IC, RoHS, REACH (**will quote the testing charge at cost**)

5. Working Condition

5.1 Working Temperature: 0°C ~ +50°C

5.2 Working Humidity: 10% ~ 90% RH

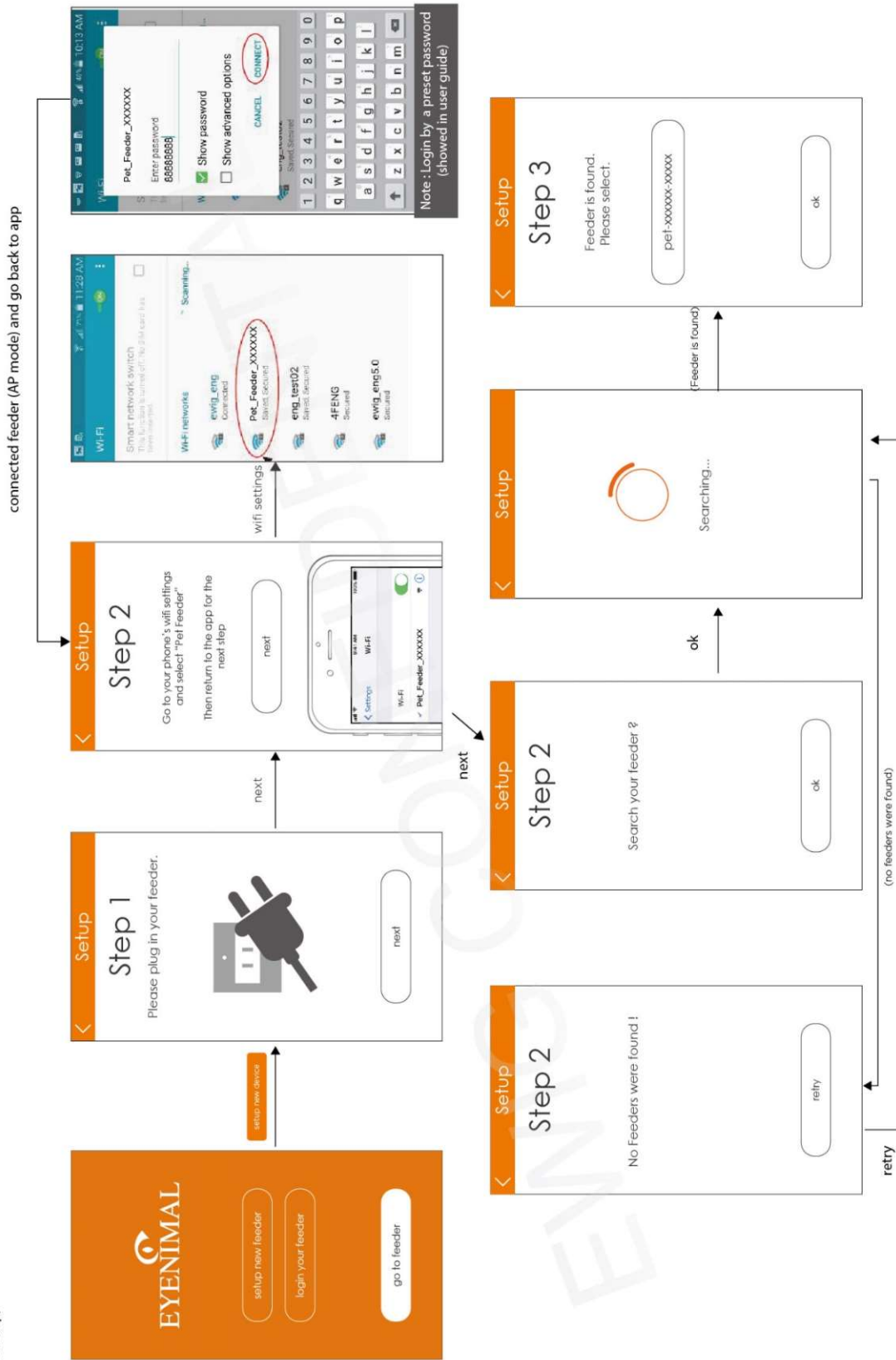
5.3 Storing Temperature: -10°C ~ +60°C

5.4 Storing Humidity: 5% - 90% RH

6. APP UI (20200324)

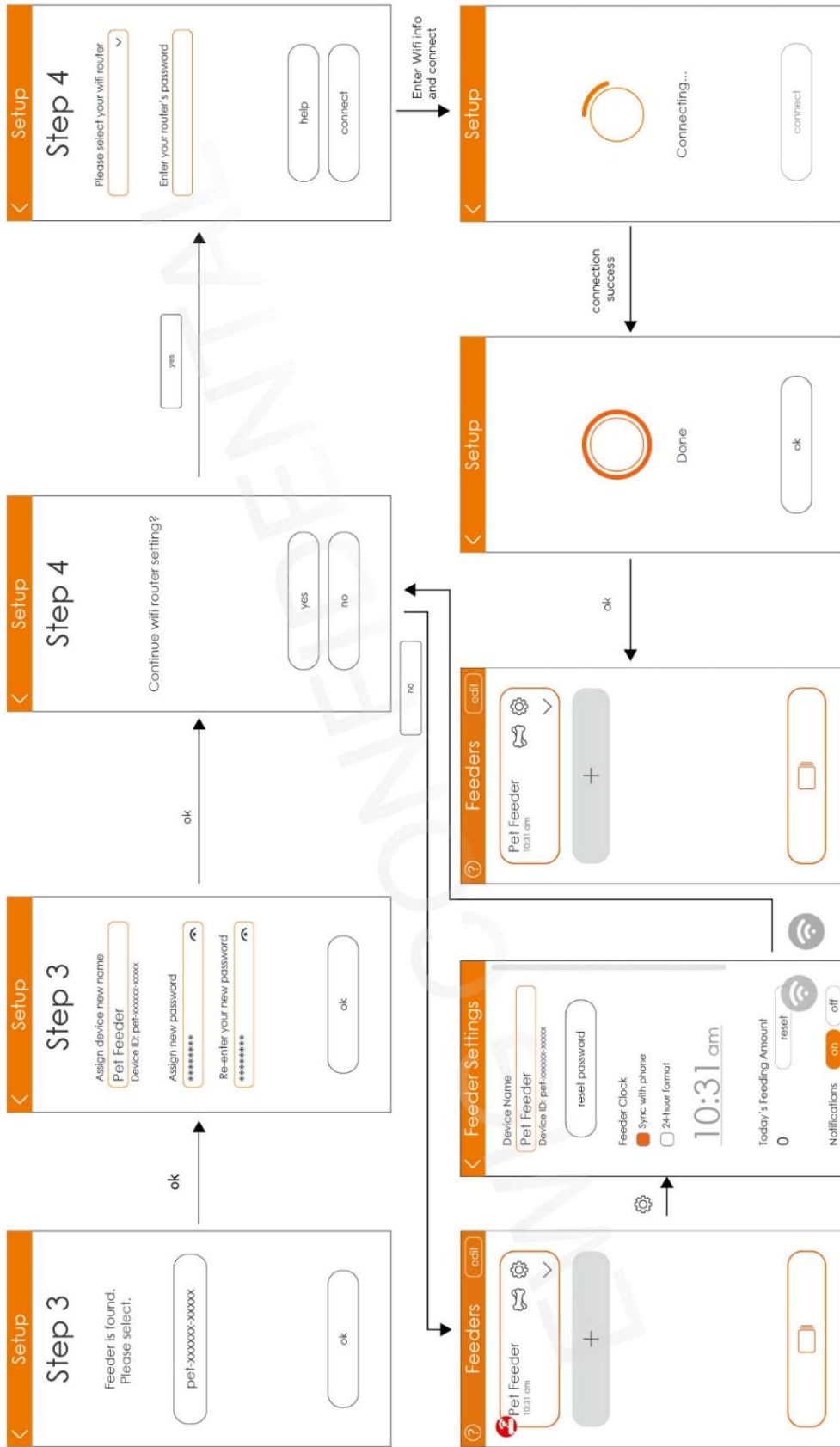
Pet feeder App UI (EYENIMAL)

First time set up

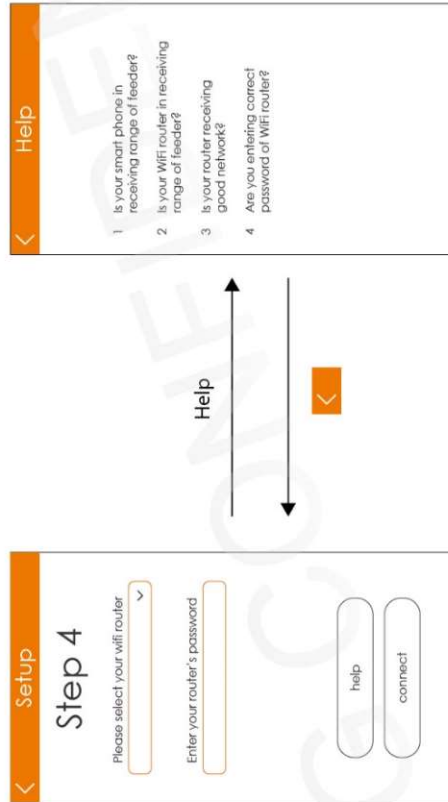


Pet feeder App UI (EYENIMAL)

First time set up



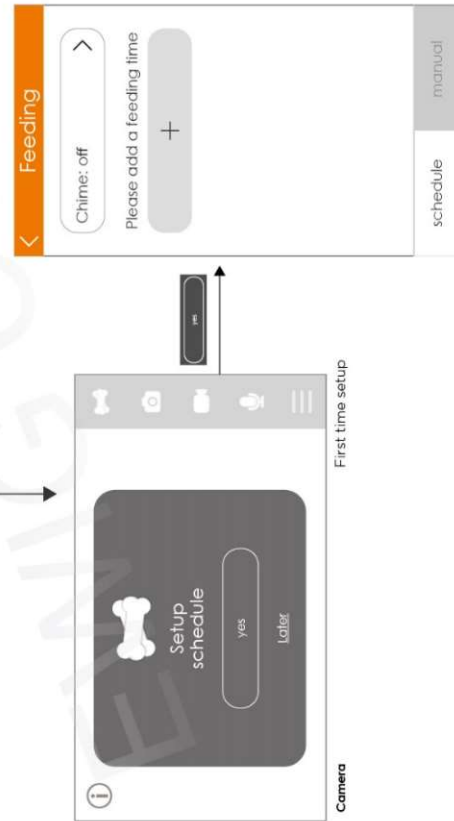
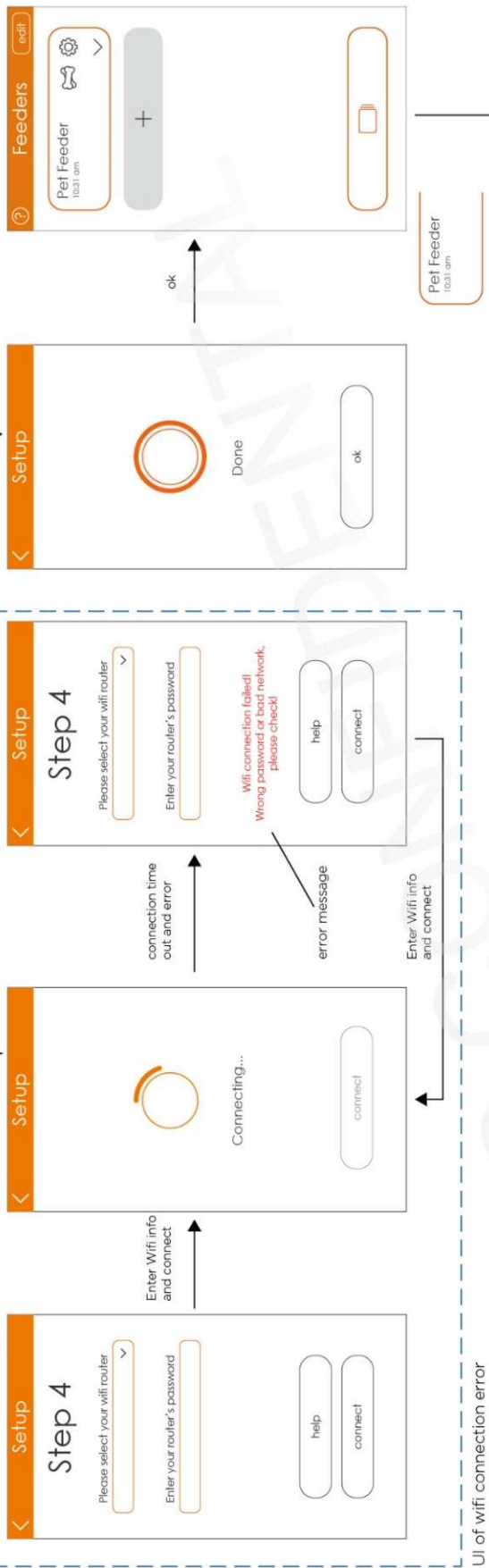
This document is strictly confidential and intended solely for EWIG internal reference. Any dissemination, reproduction or distribution of this document other than to its intended recipient is strictly prohibited.



Pet feeder App UI (EYENIMAL)

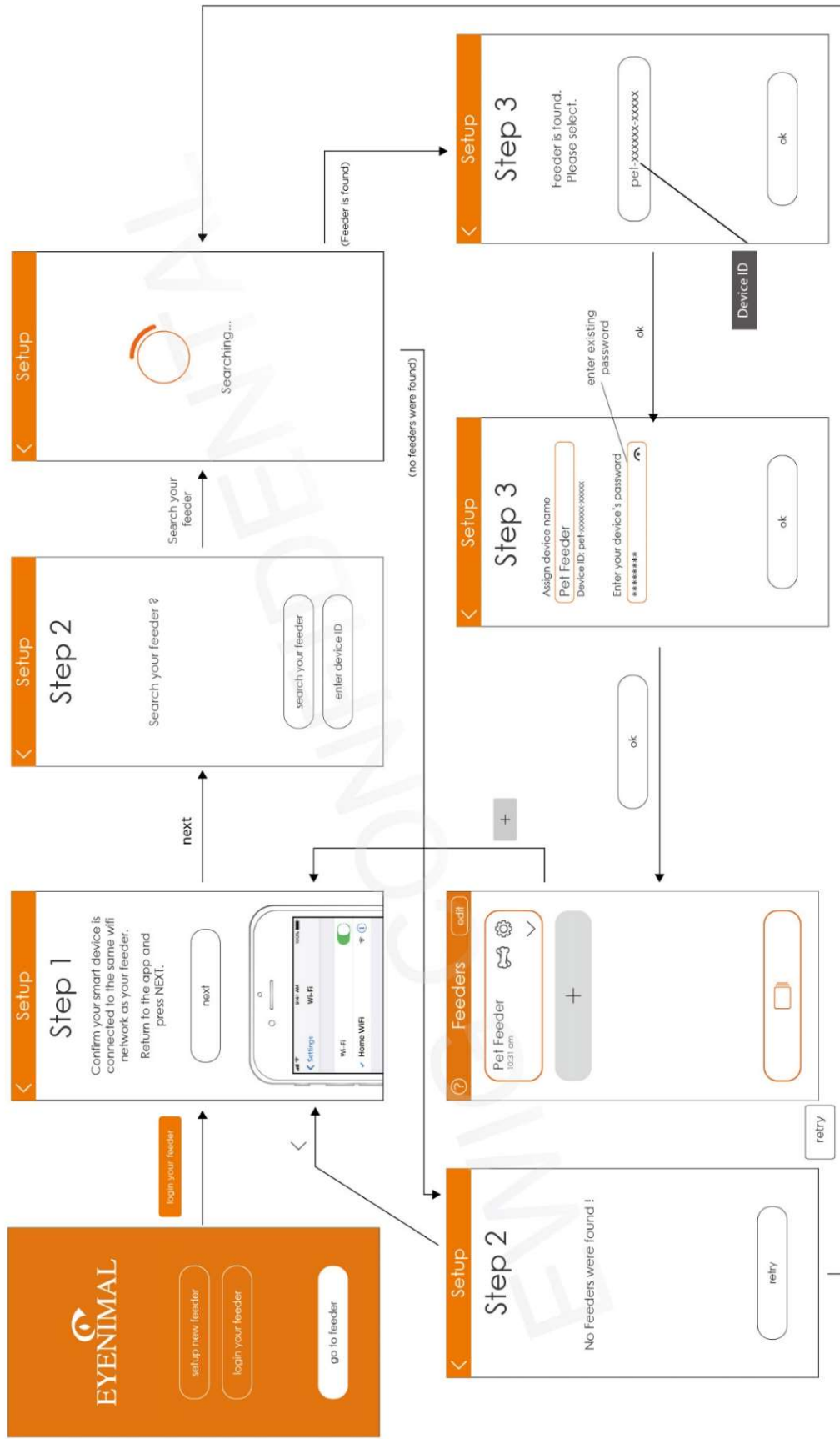
First time set up

When wifi connecting error



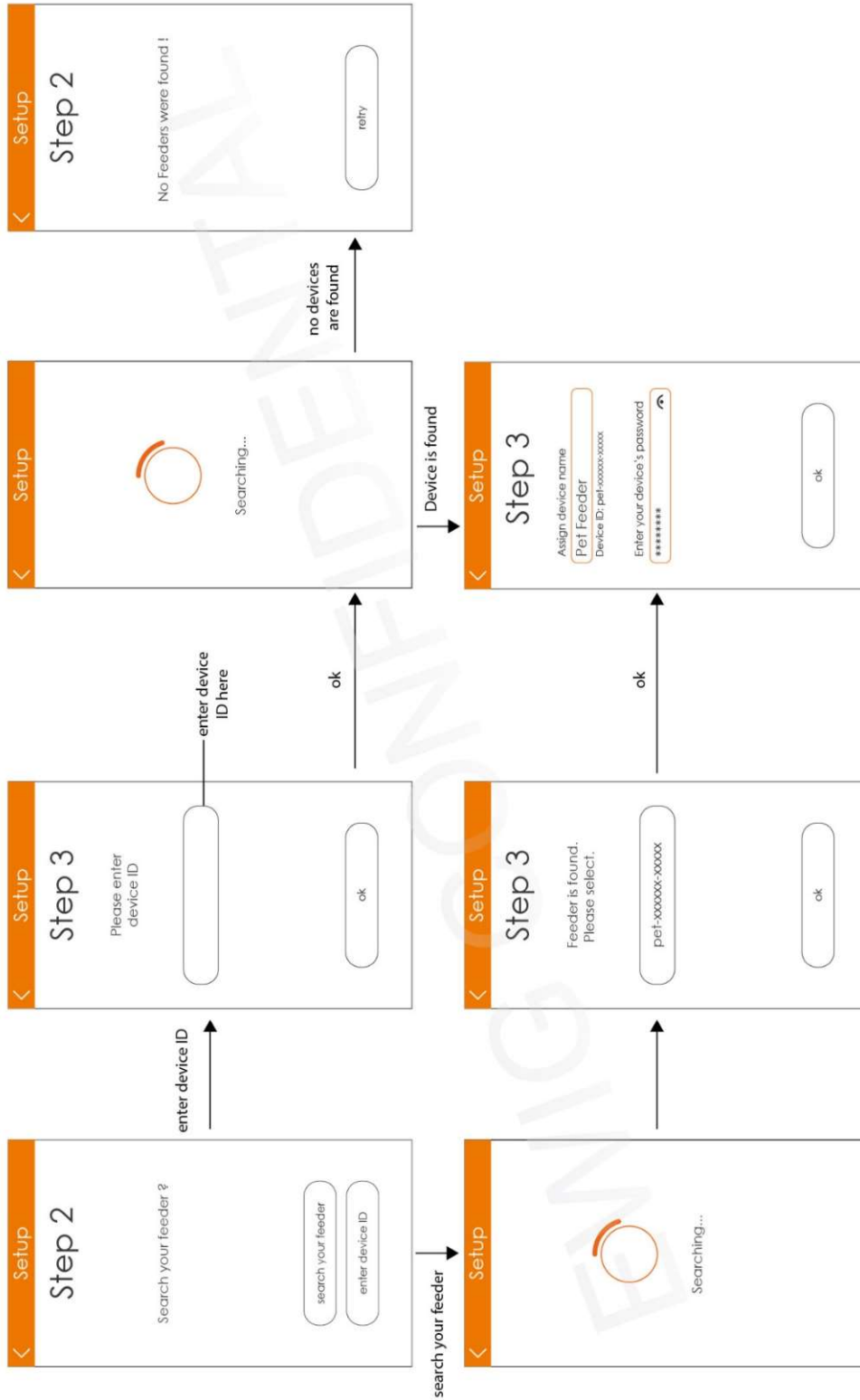
Pet feeder App UI (EYENIMAL)

2nd user login)



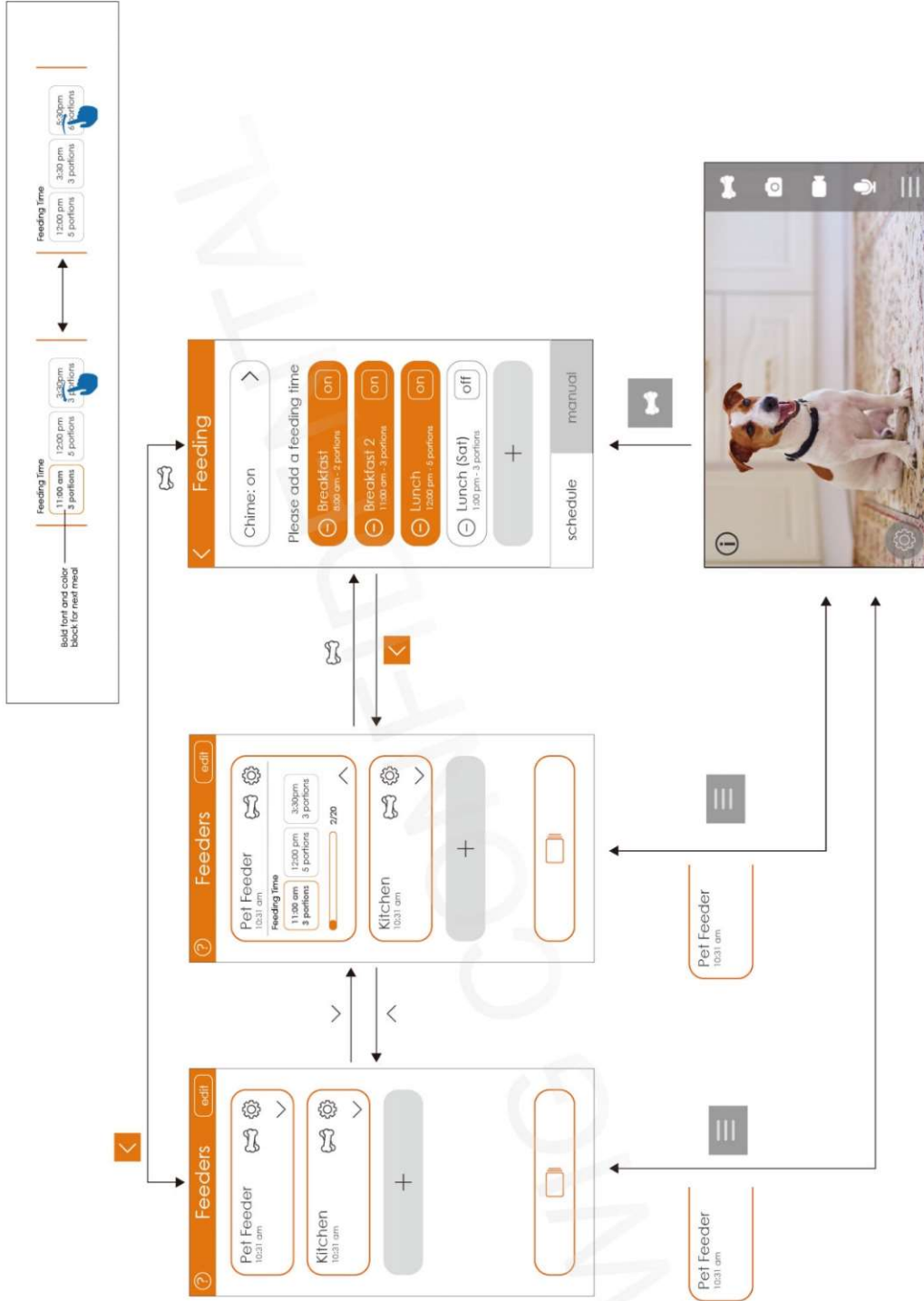
Pet feeder App UI (EYENIMAL)

for 2nd user login (when feeder in WiFi mode) - by search device or enter device ID



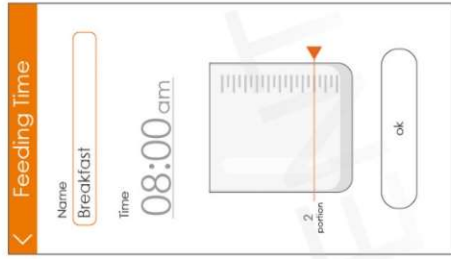
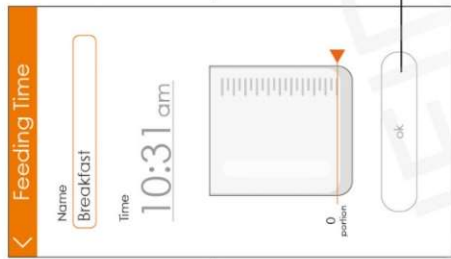
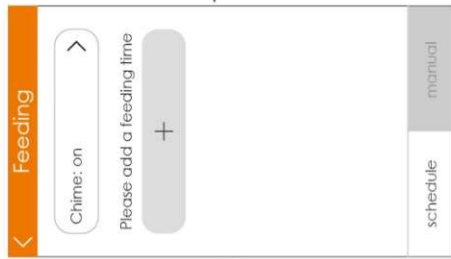
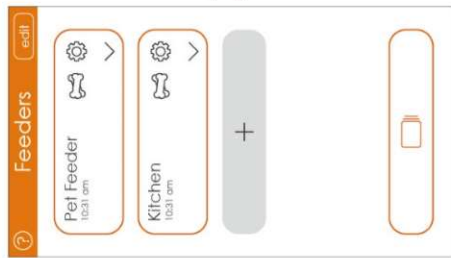
Pet feeder App UI (EYENIMAL)

Feeder page details)

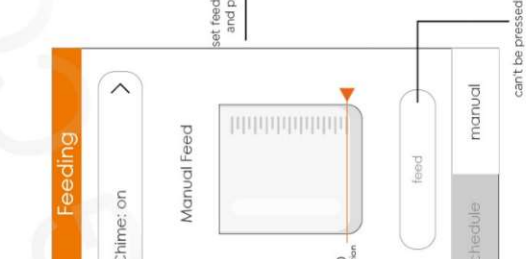
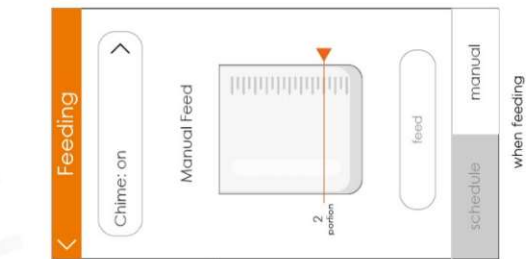
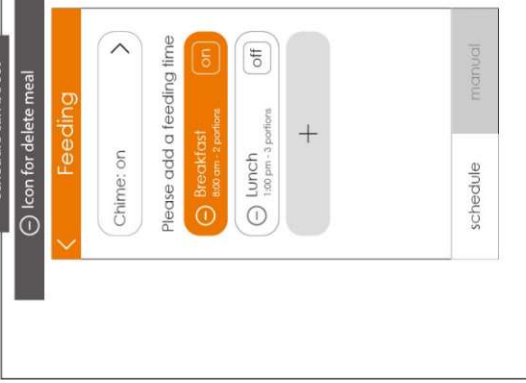


Pet feeder App UI (EYENIMAL)

Feeding)



Note : Max. 12 feeding schedule can be set



can't be pressed when the feeding amount is '0'

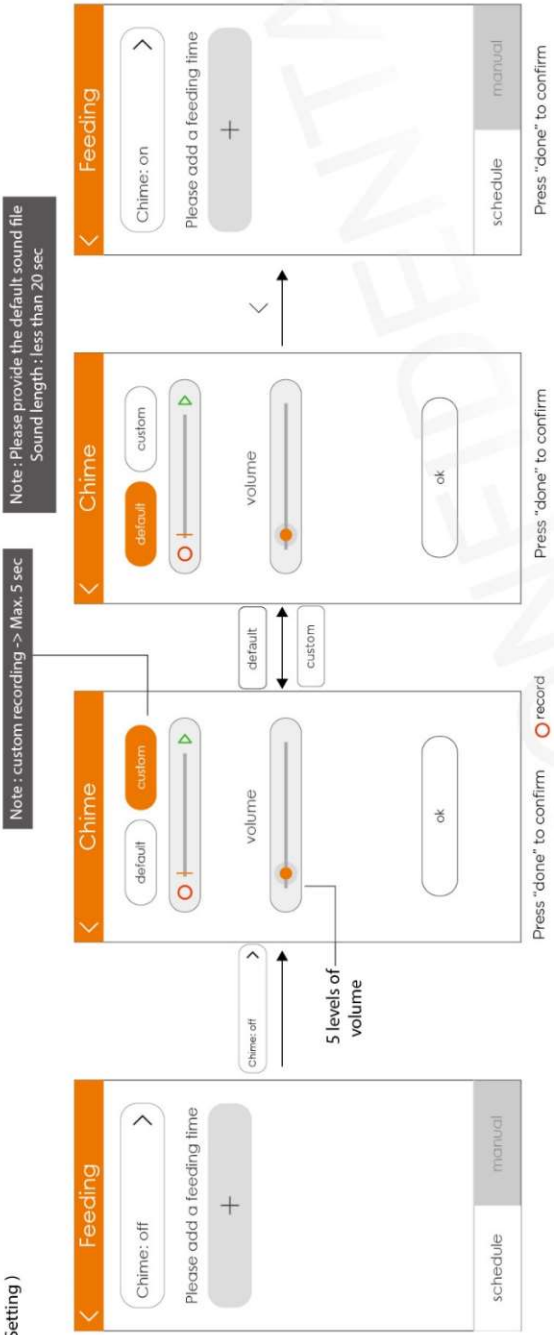
when feeding

can't be pressed when the feeding amount is '0'

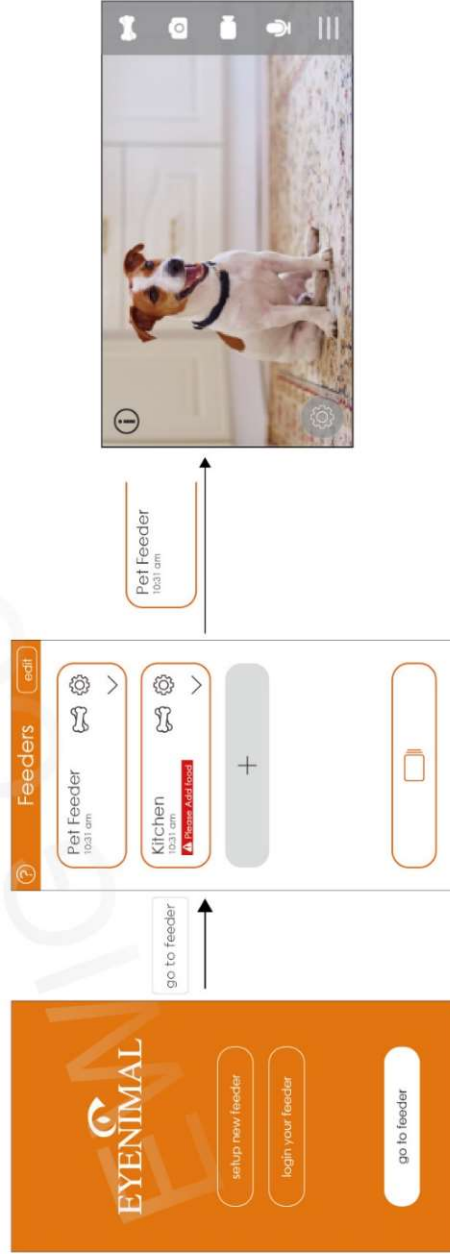
This document is strictly confidential and intended solely for EWIG internal reference. Any dissemination, reproduction or distribution of this document other than to its intended recipient is strictly prohibited.

Pet feeder App UI (EYENIMAL)

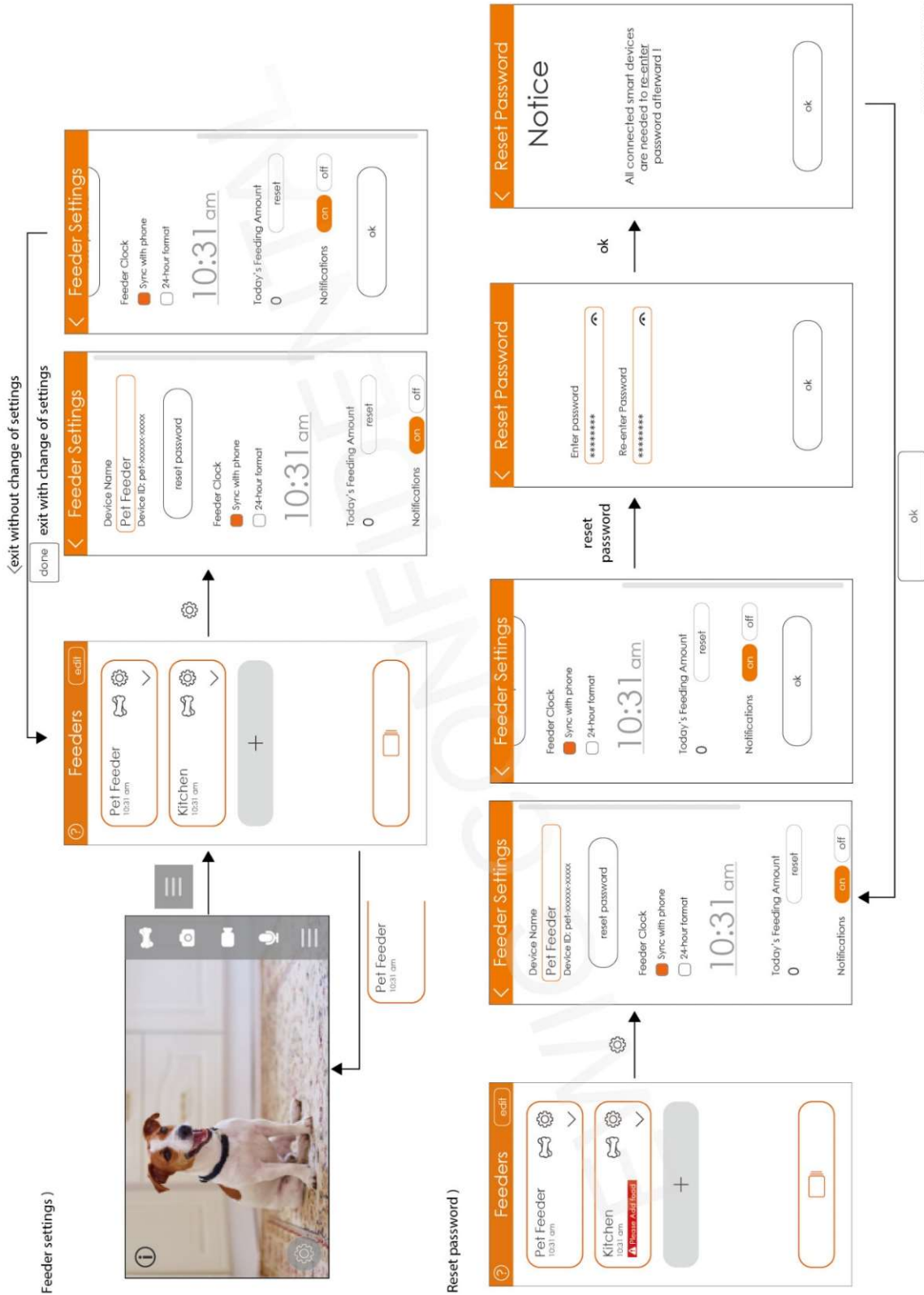
Chime Setting)



Enter the feeder)



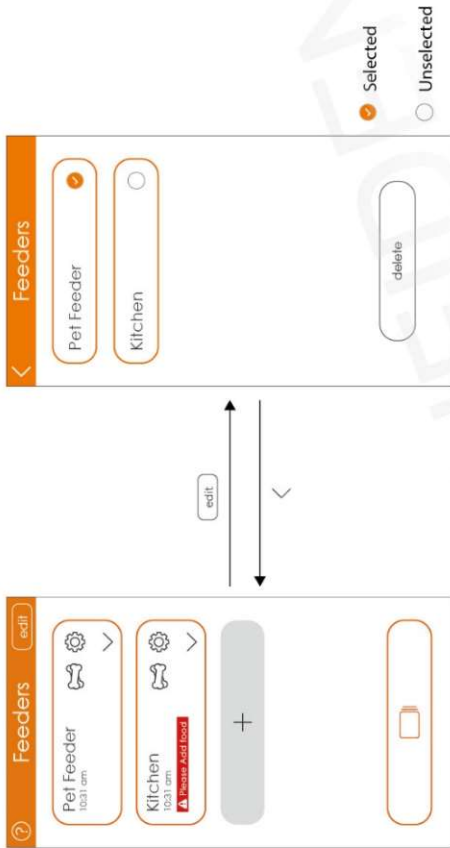
Pet feeder App UI (EYENIMAL)



This document is strictly confidential and intended solely for EWIG internal reference. Any dissemination, reproduction or distribution of this document other than to its intended recipient is strictly prohibited.

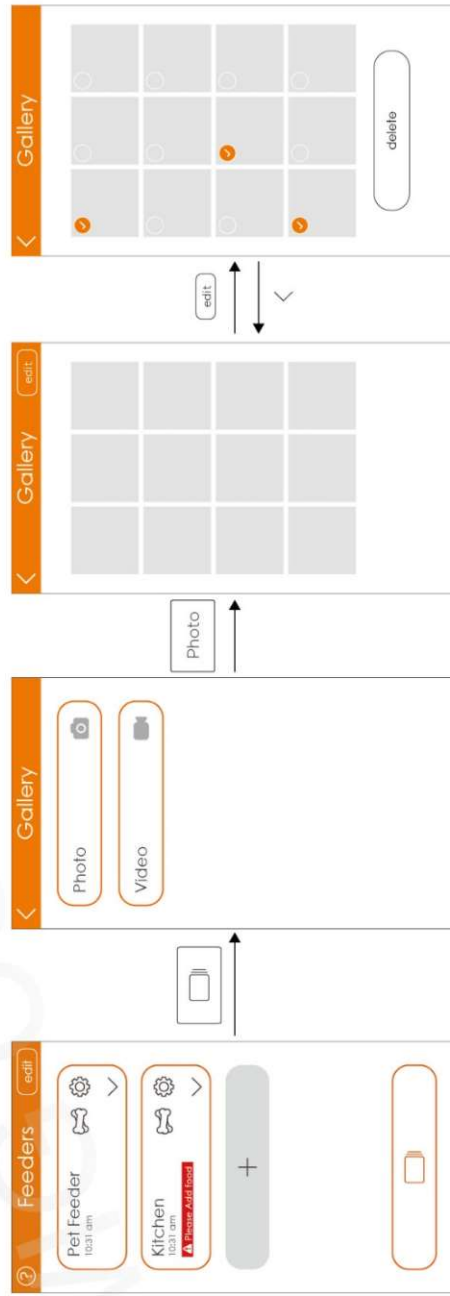
Pet feeder App UI (EYENIMAL)

Delete Feeder)



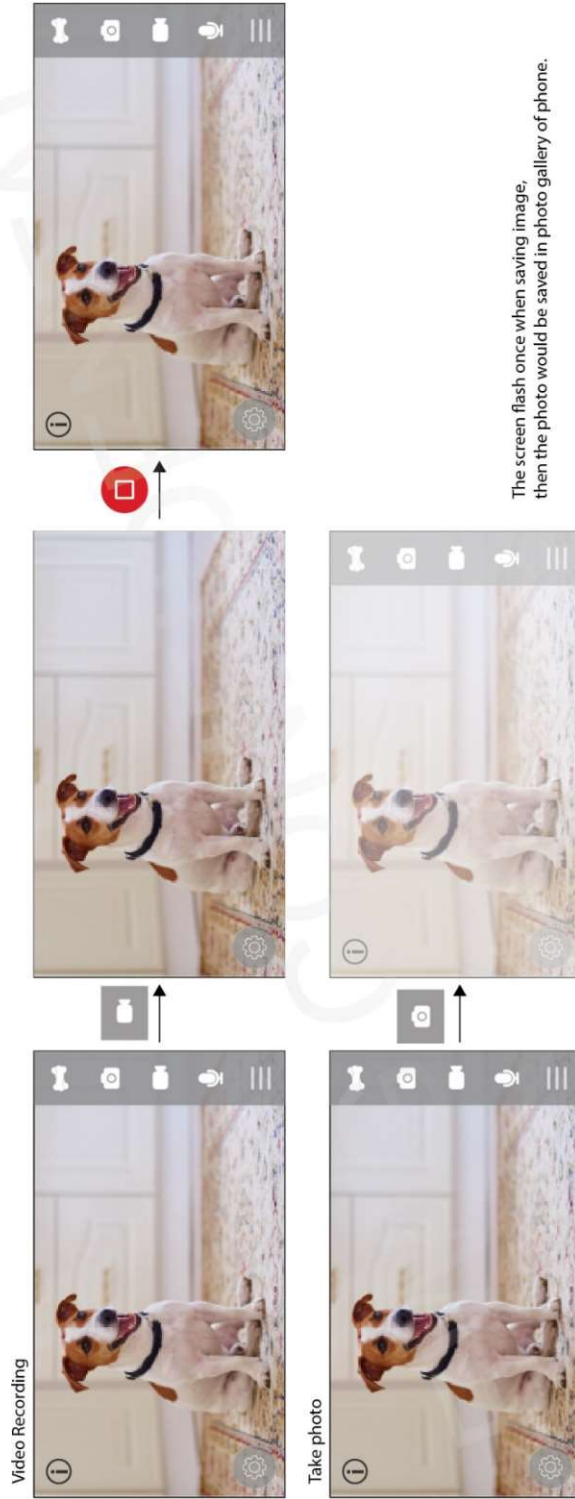
Press delete to delete the selected items

Menu of Photo Gallery)

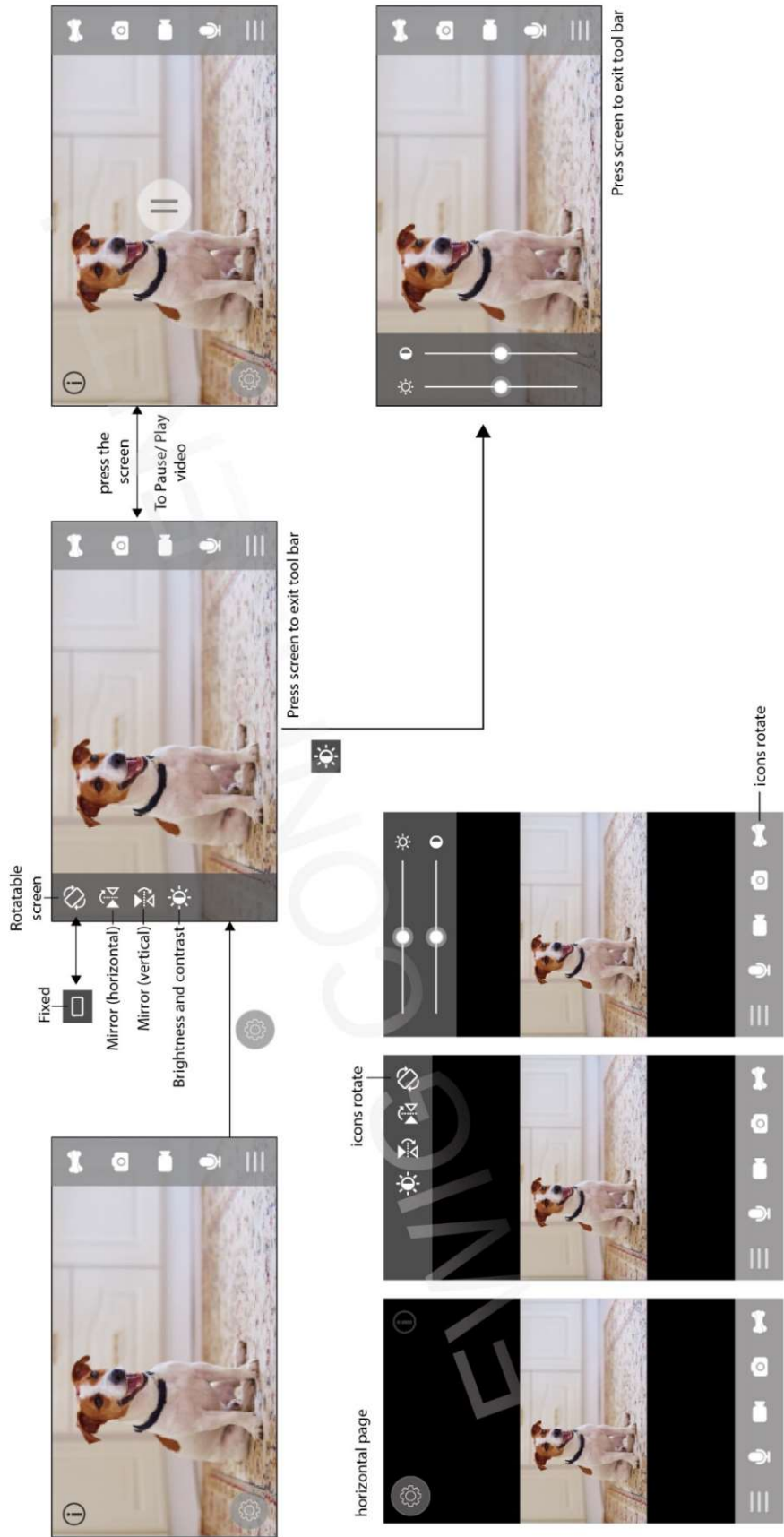


Press delete to delete the selected items

Pet feeder App UI (EYENIMAL)



Pet feeder App UI (EYENIMAL)



This document is strictly confidential and intended solely for EWIG internal reference. Any dissemination, reproduction or distribution of this document other than to its intended recipient is strictly prohibited.

Pet feeder App UI (EYENIMAL)



FCC Statement

This equipment has been tested and found to comply with the limits for a Class B digital device, pursuant to part 15 of the FCC Rules. These limits are designed to provide reasonable protection against harmful interference in a residential installation. This equipment generates, uses and can radiate radio frequency energy and, if not installed and used in accordance with the instructions, may cause harmful interference to radio communications. However, there is no guarantee that interference will not occur in a particular installation. If this equipment does cause harmful interference to radio or television reception, which can be determined by turning the equipment off and on, the user is encouraged to try to correct the interference by one or more of the following measures:

- Reorient or relocate the receiving antenna.
- Increase the separation between the equipment and receiver.
- Connect the equipment into an outlet on a circuit different from that to which the receiver is connected.
- Consult the dealer or an experienced radio/TV technician for help.

Caution: Any changes or modifications to this device not explicitly approved by manufacturer could void your authority to operate this equipment.

This device complies with part 15 of the FCC Rules. Operation is subject to the following two conditions: (1) This device may not cause harmful interference, and (2) this device must accept any interference received, including interference that may cause undesired operation.

RF Exposure Information

This equipment complies with FCC radiation exposure limits set forth for an uncontrolled environment. This equipment should be installed and operated with minimum distance 20cm between the radiator and your body.

ISED Statement

English: This device contains licence-exempt transmitter(s)/receiver(s) that comply with Innovation, Science and Economic Development Canada's licence-exempt RSS(s). Operation is subject to the following two conditions:

- (1) This device may not cause interference.
- (2) This device must accept any interference, including interference that may cause undesired operation of the device.

The digital apparatus complies with Canadian CAN ICES - 3 (B)/NMB - 3(B).

French: Cet appareil contient des émetteurs/récepteurs exempts de licence qui sont conformes aux RSS exemptés de licence d'Innovation, Sciences et Développement économique Canada.

L'exploitation est soumise aux deux conditions suivantes :

- (1) Cet appareil ne doit pas provoquer d'interférences.
- (2) Cet appareil doit accepter toute interférence, y compris les interférences susceptibles de provoquer un fonctionnement indésirable de l'appareil.

L'appareil numérique du ciem conforme canadien peut - 3 (b) / nmb - 3 (b).

This device meets the exemption from the routine evaluation limits in section 2.5 of RSS 102 and compliance with RSS 102 RF exposure, users can obtain Canadian information on RF exposure and compliance.

cet appareil est conforme à l'exemption des limites d'évaluation courante dans la section 2.5 du cnr - 102 et conformité avec rssi 102 de l'exposition aux rf, les utilisateurs peuvent obtenir des données canadiennes sur l'exposition aux champs rf et la conformité.

This equipment complies with Canada radiation exposure limits set forth for an uncontrolled environment.

Cet équipement est conforme aux limites d'exposition aux rayonnements du Canada établies pour un environnement non contrôlé.

This equipment should be installed and operated with minimum distance 20cm between the radiator & your body.

Cet équipement doit être installé et utilisé à une distance minimale de 20 cm entre le radiateur et votre corps.