

Annex 3: Internal photographs of EUT  
to TEST REPORT  
No.: 16-1-0181301T11a

According to:

**FCC Regulations**







Part 15.205  
Part 15.209  
Part 15.247

for

Datalogic S.r.l.

**SKORPIO X4**  
Type:00ANM4HS0GF0A4

FCC ID: U4GSX4WB

| Laboratory Accreditation and Listings                                                                                                                                                                                                                                                                                                                     |                                                                                                                                                                        |                                                                                                                                                         |                                                                                                                                                                                                      |
|-----------------------------------------------------------------------------------------------------------------------------------------------------------------------------------------------------------------------------------------------------------------------------------------------------------------------------------------------------------|------------------------------------------------------------------------------------------------------------------------------------------------------------------------|---------------------------------------------------------------------------------------------------------------------------------------------------------|------------------------------------------------------------------------------------------------------------------------------------------------------------------------------------------------------|
|  <p><b>DAkKS</b><br/>Deutsche<br/>Akkreditierungsstelle<br/>D-PL-12047-01-01</p>                                                                                                                                                                                       |  <p>FEDERAL COMMUNICATIONS COMMISSION<br/><b>FCC</b><br/>USA<br/>MRA US-EU 0003</p> |  <p>Industry Canada<br/>Reg. No.: 3462D-2<br/>Reg. No.: 3462D-3</p> |  <p>Voluntary Controls for<br/>Electromagnetic Emissions<br/>Reg. No.:<br/>R-2666 C-2914,<br/>T-1967, G-301</p> |
|  <p><b>WiFi</b><br/>ALLIANCE<br/>AUTHORIZED<br/>RF LABORATORY</p>                                                                                                                                                                                                      |  <p><b>ctia</b> Authorized<sup>TM</sup><br/>Test Lab<br/>Lab Code: 20011130-00</p> |                                                                                                                                                         |                                                                                                                                                                                                      |
| accredited according to DIN EN ISO/IEC 17025                                                                                                                                                                                                                                                                                                              |                                                                                                                                                                        |                                                                                                                                                         |                                                                                                                                                                                                      |
| <p align="center"><b>CETECOM GmbH</b><br/>Laboratory Radio Communications &amp; Electromagnetic Compatibility<br/>Im Teelbruch 116 • 45219 Essen • Germany<br/>Registered in Essen, Germany, Reg. No.: HRB Essen 8984<br/>Tel.: + 49 (0) 20 54 / 95 19-954 • Fax: + 49 (0) 20 54 / 95 19-964<br/>E-mail: info@cetecom.com • Internet: www.cetecom.com</p> |                                                                                                                                                                        |                                                                                                                                                         |                                                                                                                                                                                                      |

**TABLE OF CONTENTS:**

**1. INTERNAL PHOTOGRAPHS..... 3**

    1.1. Equipment Under Test Assembly ..... 3

    1.2. Equipment Under Test Radio Module +Antennas ..... 14

## 1. Internal photographs

### 1.1. Equipment Under Test Assembly



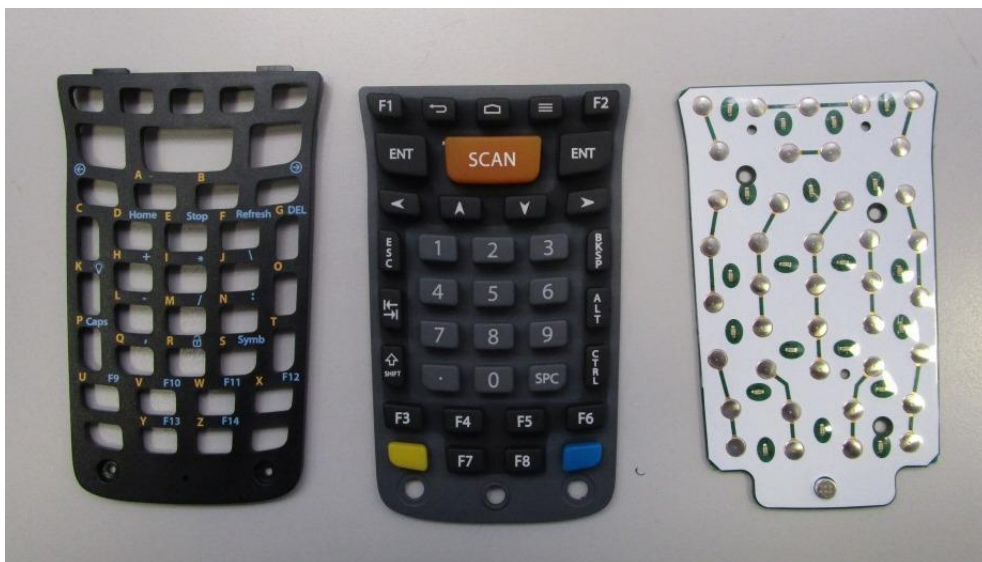
**Photograph 1: SKORPIO X4 – Upper Case Overview**



**Photograph 2: SKORPIO X4 – Keyboard (Full Alphanumeric)**



**Photograph 3: SKORPIO X4 – Keyboard (Numeric)**



**Photograph 4: SKORPIO X4 – Keyboard (Alphanumeric)**



**Photograph 5: SKORPIO X4 - Rear View with battery disconnected**



**Photograph 6: SKORPIO X4 – Handle Assembly disconnected**

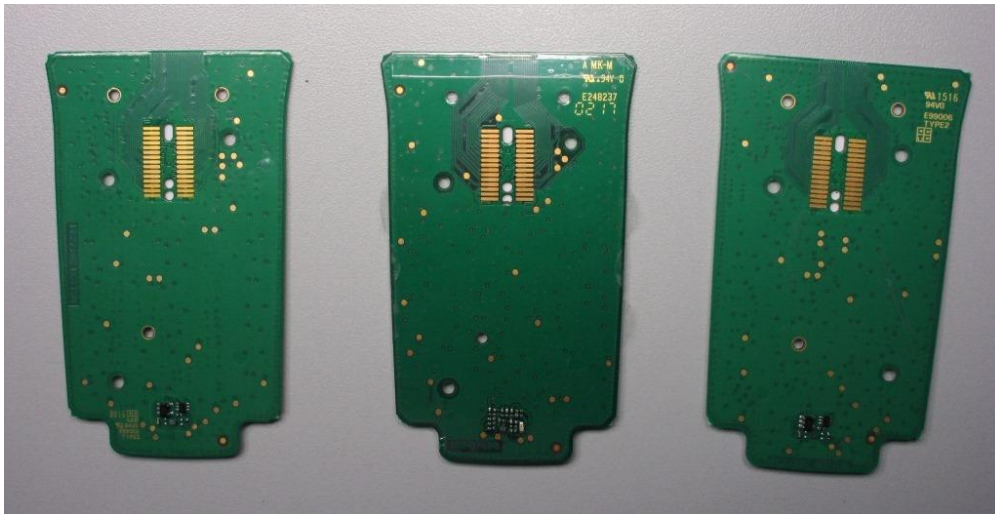




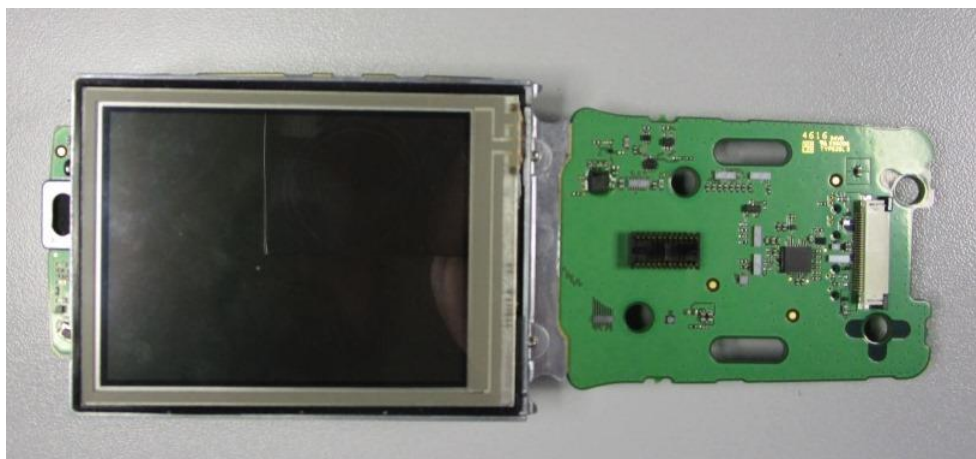
**Photograph 7: SKORPIO X4 – Internal PCB Overview-Front Side**



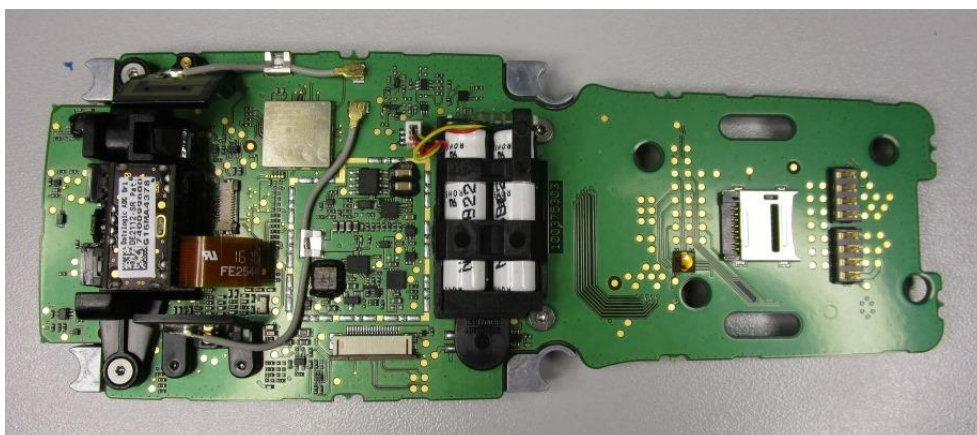
**Photograph 8: SKORPIO X4 – Internal PCB Overview-Bottom Side**



**Photograph 9: SKORPIO X4 – Keyboard (Full Alphanumeric / Numeric / Alphanumeric) Bottom Side**



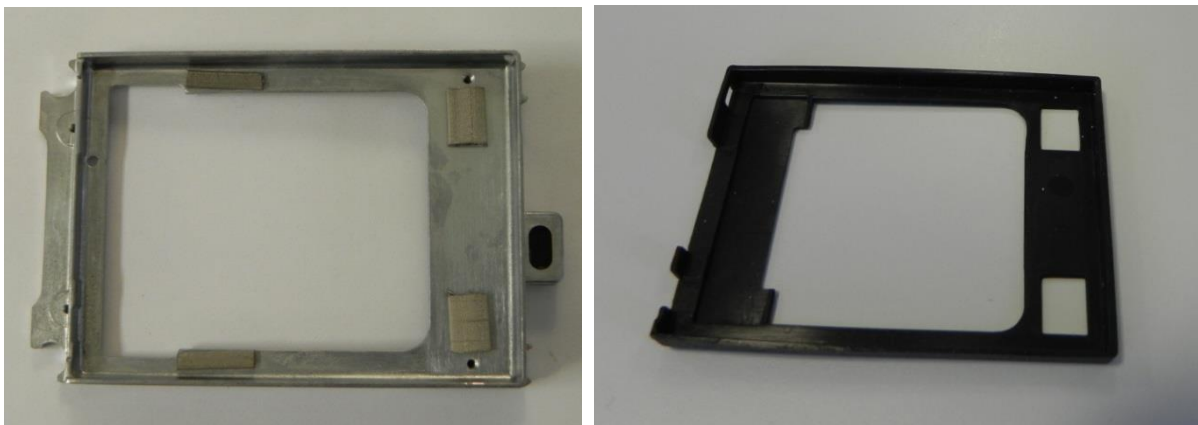
**Photograph 10: SKORPIO X4 –Mainboard Display Assembly Top Side**



**Photograph 11: SKORPIO X4 –Mainboard Assembly Bottom Side**



**Photograph 12: SKORPIO X4 –Display Assembly Top Side**



**Photograph 13: SKORPIO X4 –Display Frame & Cushion**

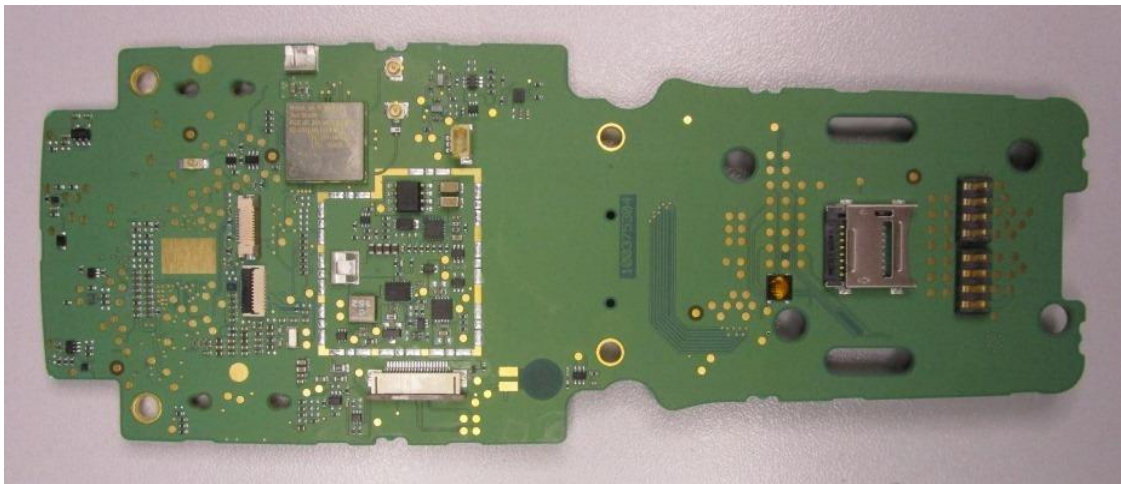


**Photograph 14: SKORPIO X4 –Display Back Side**

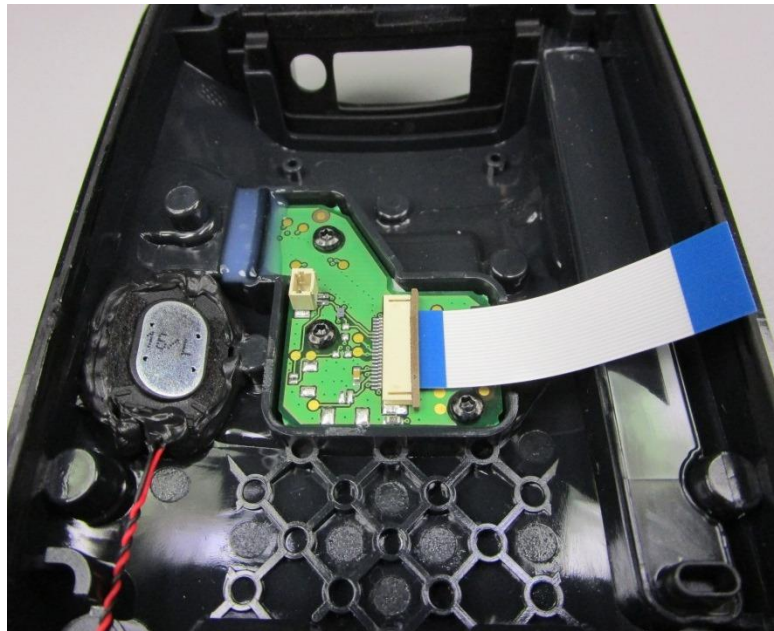




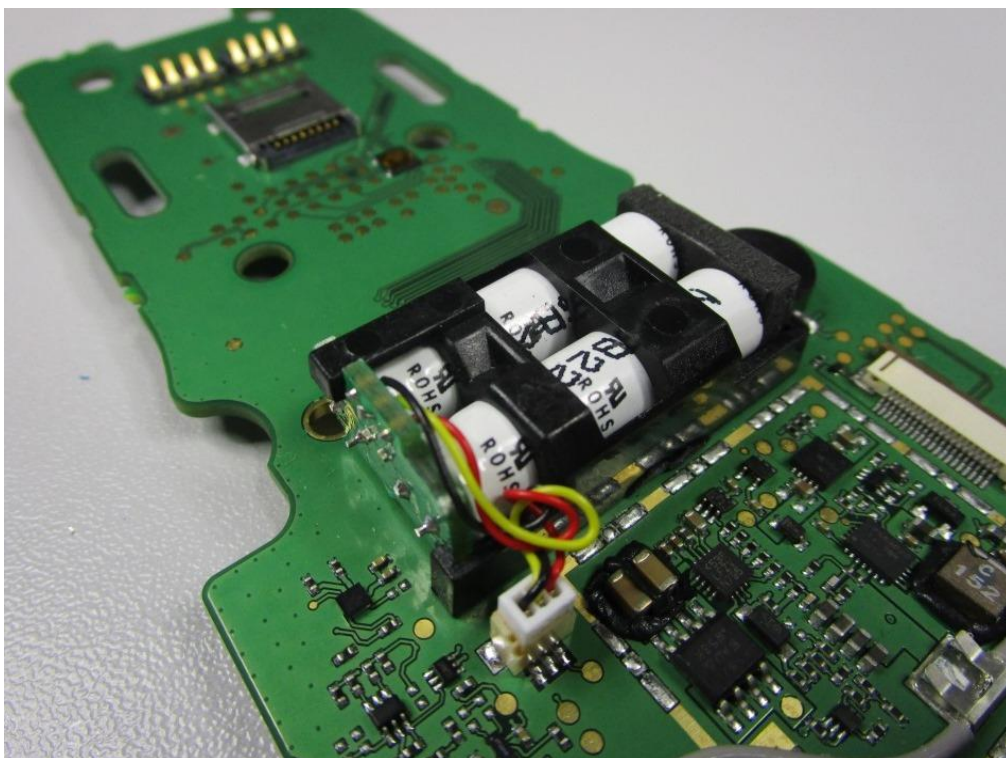
**Photograph 15: SKORPIO X4 –Mainboard Top Side**



**Photograph 16: SKORPIO X4 –Mainboard Bottom Side**



**Photograph 17: SKORPIO X4 -Trigger Board**



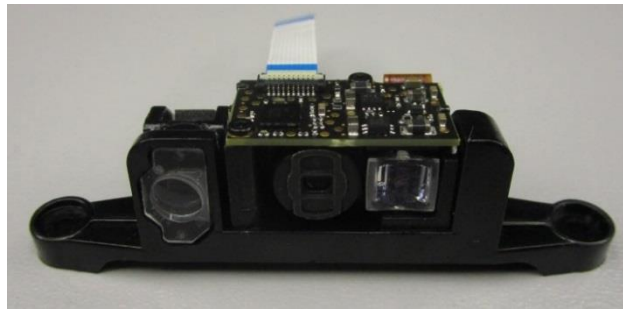
**Photograph 18: SKORPIO X4 -Supercap**



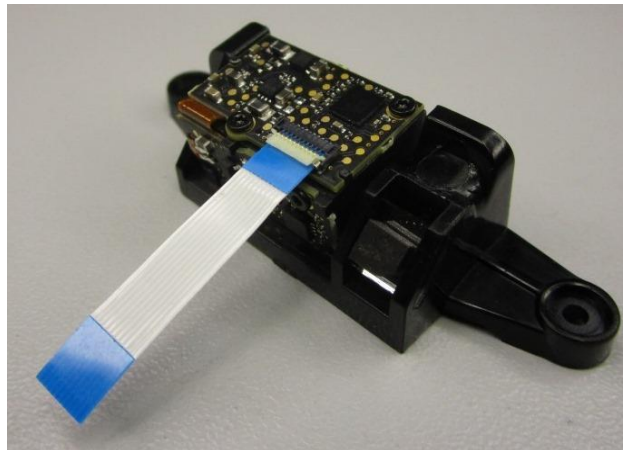
**Photograph 19: SKORPIO X4 – Barcode Reader Assembly-1D Imager**



**Photograph 20: SKORPIO X4 – Barcode Reader Assembly-2D Imager**



**Photograph 21: SKORPIO X4 –1D Imager with plastic support and Green Spot-Front Side**



**Photograph 22: SKORPIO X4 –1D Imager with plastic support and Green Spot-Rear Side**



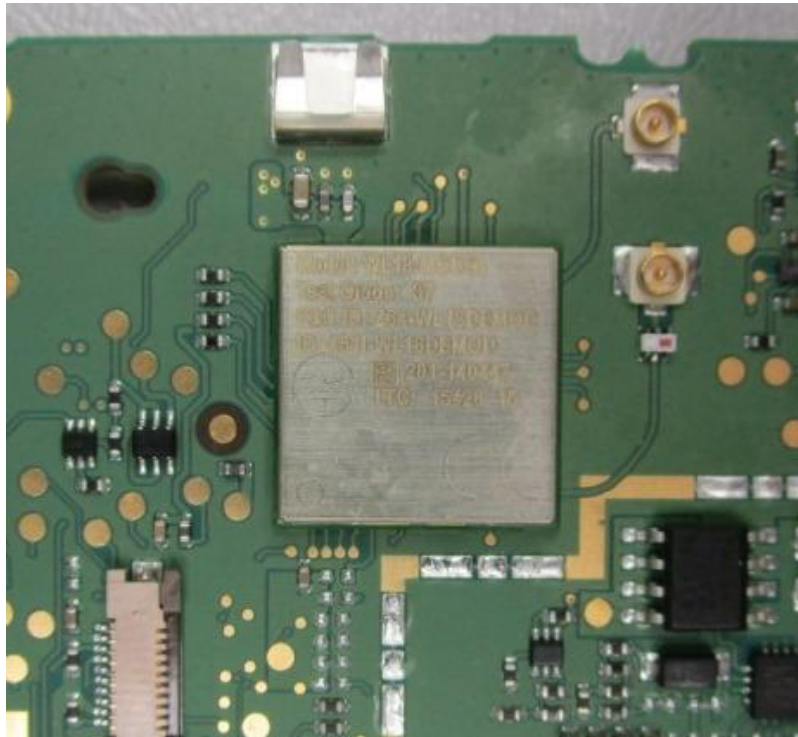


**Photograph 23: SKORPIO X4 -2D Imager with plastic support and Green Spot-Front Side**

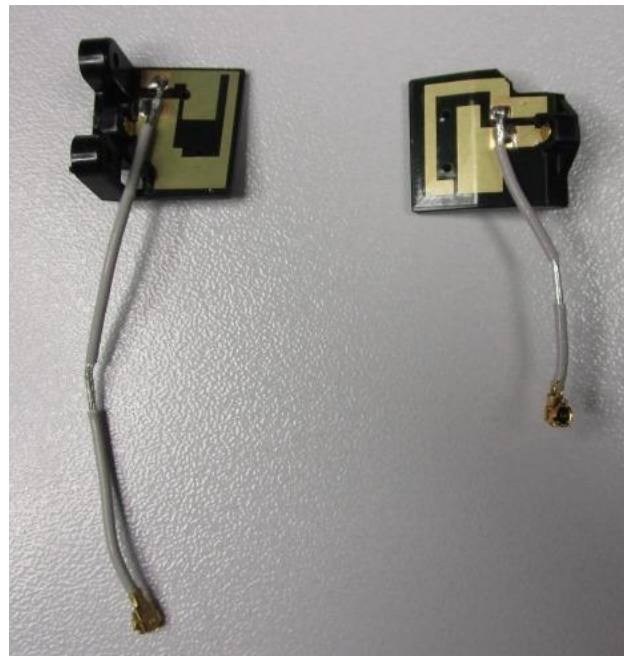


**Photograph 24: SKORPIO X4 -2D Imager with plastic support and Green Spot-Rear Side**

## 1.2. Equipment Under Test Radio Module +Antennas



**Photograph 25: SKORPIO X4 –Integrated Radio Module- WL18MODGI**



**Photograph 26: SKORPIO X4 –Integrated Antennas ANT2 (on left) & ANT1 (on right)**