

Annex 3: Internal photographs of EUT
to TEST REPORT
No.: 16-1-0181301T12a

According to:

FCC Regulations

Part 15.205
Part 15.209
Part 15.247

for

Datalogic S.r.l.

SKORPIO X4
Type:00ANM4HS0GF0A4

FCC ID: U4GSX4WB







Laboratory Accreditation and Listings			
 <p>DAkKS Deutsche Akkreditierungsstelle D-PL-12047-01-01</p>	 <p>FEDERAL COMMUNICATIONS COMMISSION FCC USA MRA US-EU 0003</p>	 <p>Industry Canada Reg. No.: 3462D-2 Reg. No.: 3462D-3</p>	 <p>Voluntary Controls for Electromagnetic Emissions Reg. No.: R-2666 C-2914, T-1967, G-301</p>
 <p>WiFi ALLIANCE AUTHORIZED RF LABORATORY</p>	 <p>ctia AuthorizedTM Test Lab Lab Code: 20011130-00</p>		
accredited according to DIN EN ISO/IEC 17025			
<p>CETECOM GmbH Laboratory Radio Communications & Electromagnetic Compatibility Im Teelbruch 116 • 45219 Essen • Germany Registered in Essen, Germany, Reg. No.: HRB Essen 8984 Tel.: + 49 (0) 20 54 / 95 19-954 • Fax: + 49 (0) 20 54 / 95 19-964 E-mail: info@cetecom.com • Internet: www.cetecom.com</p>			

TABLE OF CONTENTS:

1. INTERNAL PHOTOGRAPHS..... 3

1.1. Equipment Under Test Assembly 3

1.2. Equipment Under Test Radio Module +Antennas 14

1. Internal photographs

1.1. Equipment Under Test Assembly



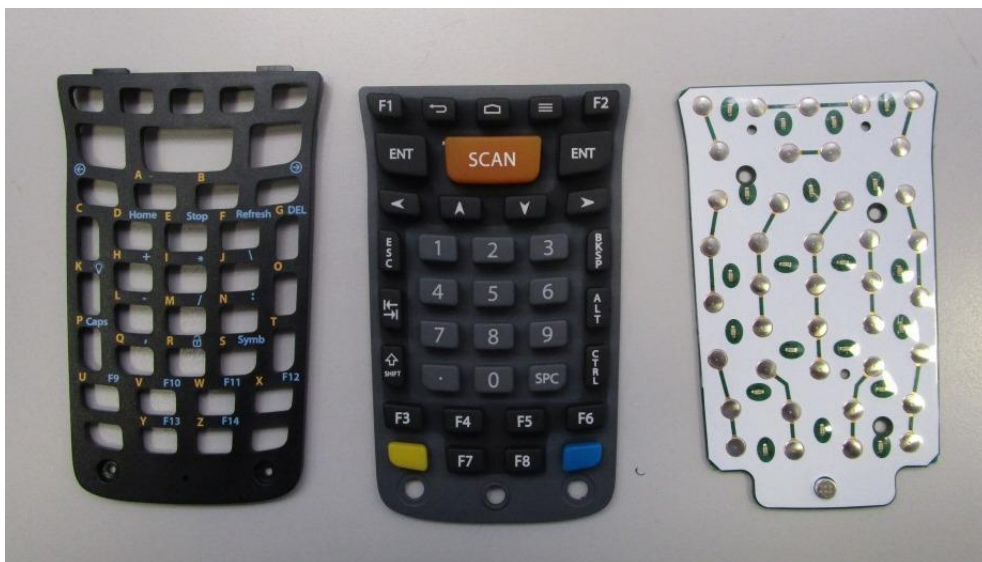
Photograph 1: SKORPIO X4 – Upper Case Overview



Photograph 2: SKORPIO X4 – Keyboard (Full Alphanumeric)



Photograph 3: SKORPIO X4 – Keyboard (Numeric)



Photograph 4: SKORPIO X4 – Keyboard (Alphanumeric)



Photograph 5: SKORPIO X4 - Rear View with battery disconnected



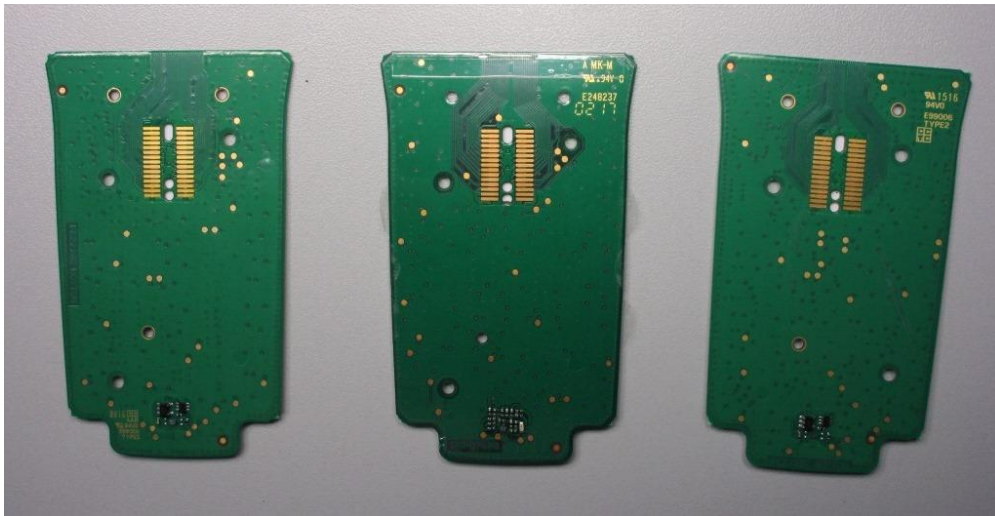
Photograph 6: SKORPIO X4 – Handle Assembly disconnected



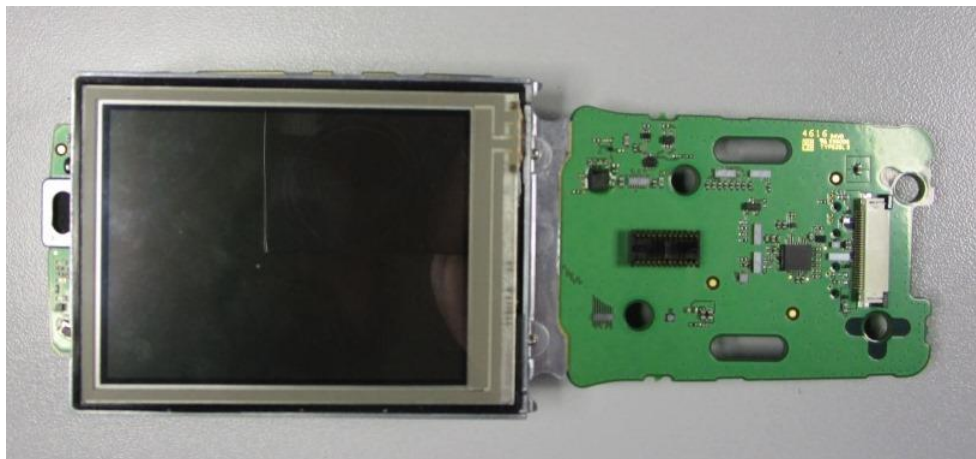
Photograph 7: SKORPIO X4 – Internal PCB Overview-Front Side



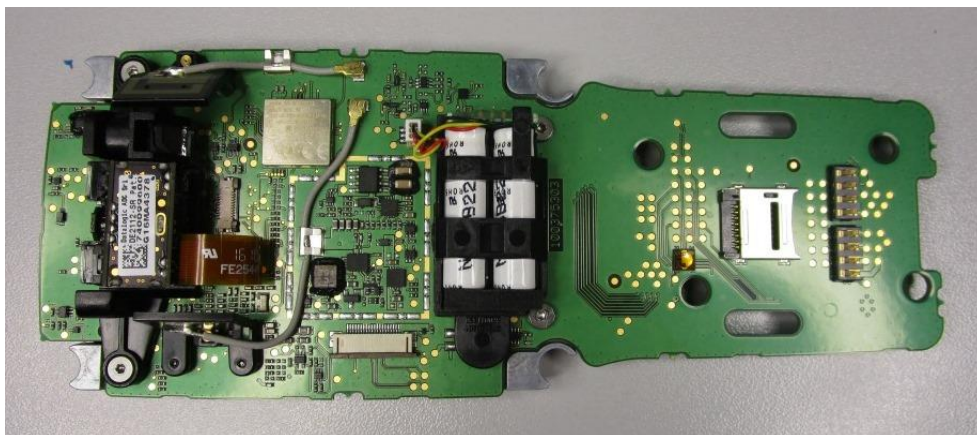
Photograph 8: SKORPIO X4 – Internal PCB Overview-Bottom Side



Photograph 9: SKORPIO X4 – Keyboard (Full Alphanumeric / Numeric / Alphanumeric) Bottom Side



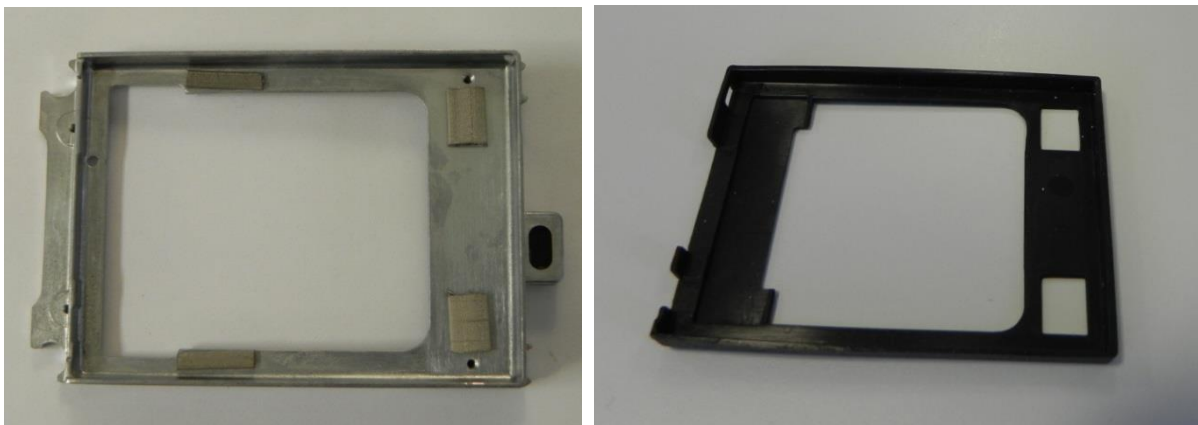
Photograph 10: SKORPIO X4 –Mainboard Display Assembly Top Side



Photograph 11: SKORPIO X4 –Mainboard Assembly Bottom Side



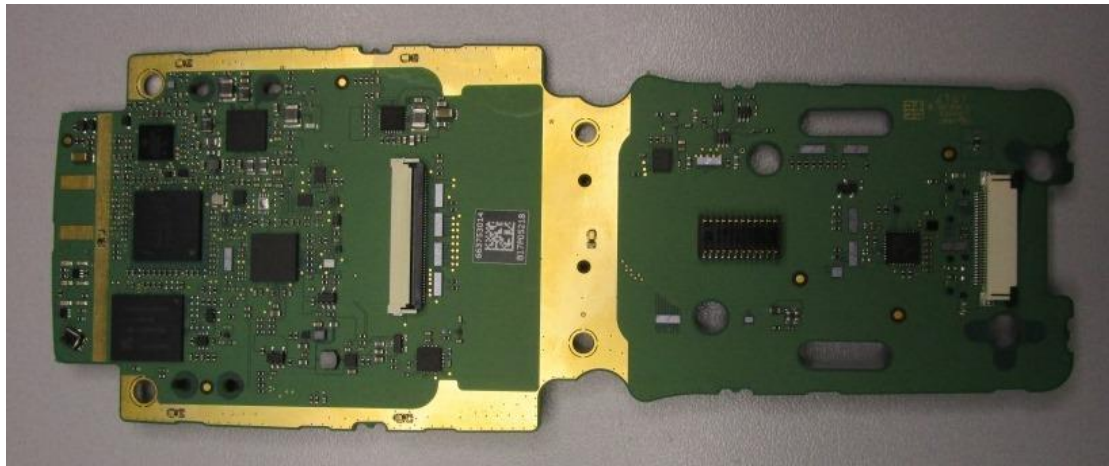
Photograph 12: SKORPIO X4 –Display Assembly Top Side



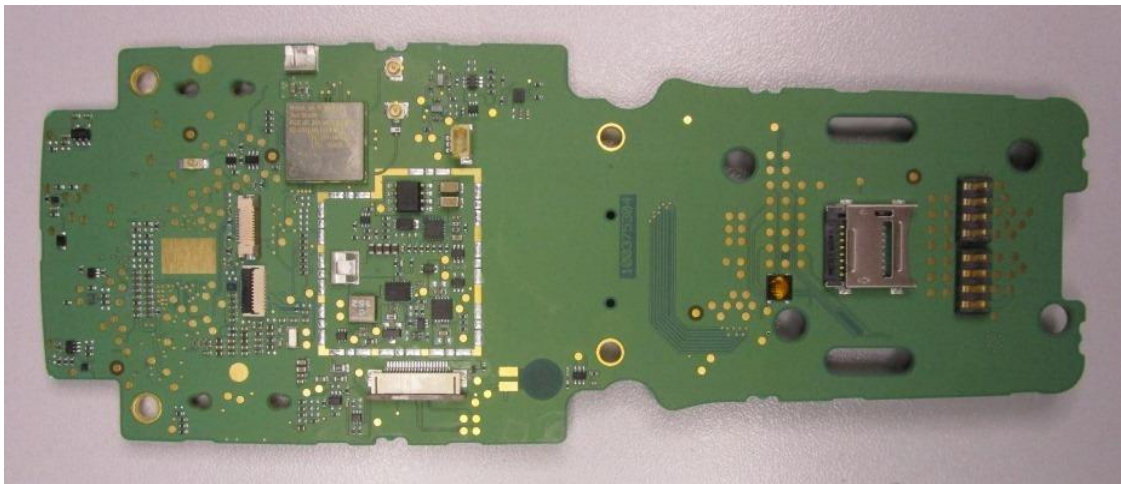
Photograph 13: SKORPIO X4 –Display Frame & Cushion



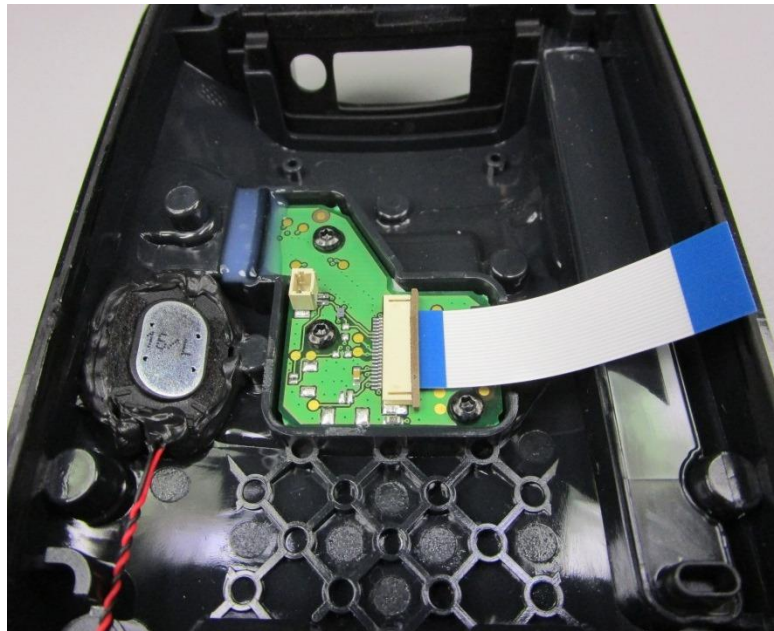
Photograph 14: SKORPIO X4 –Display Back Side



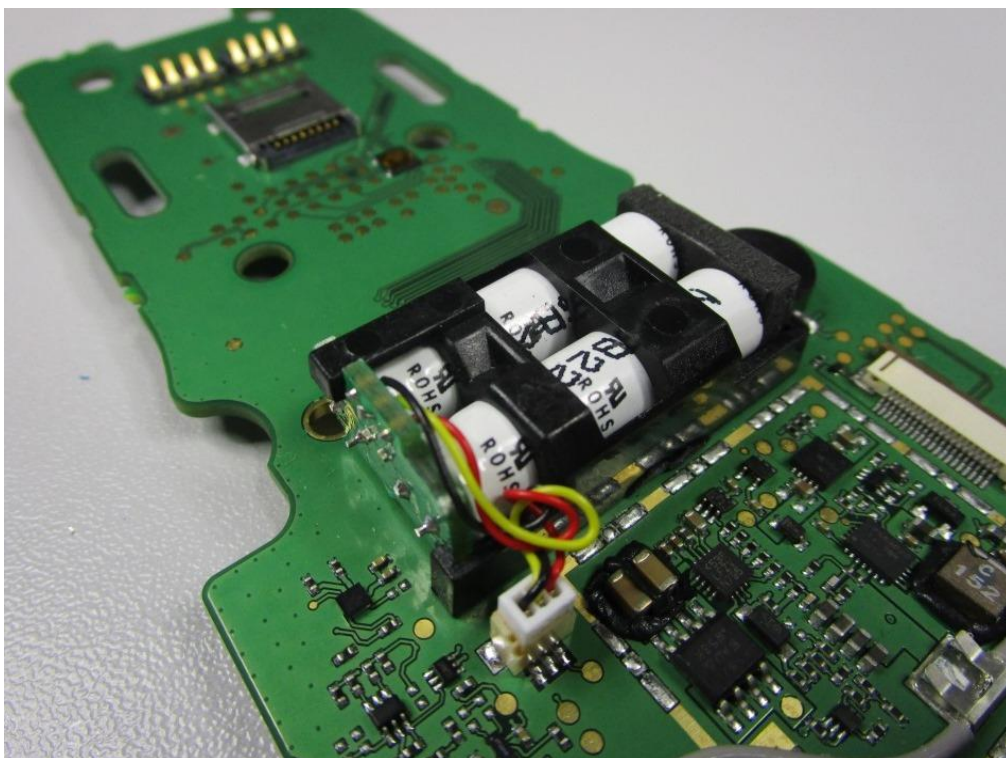
Photograph 15: SKORPIO X4 –Mainboard Top Side



Photograph 16: SKORPIO X4 –Mainboard Bottom Side



Photograph 17: SKORPIO X4 -Trigger Board



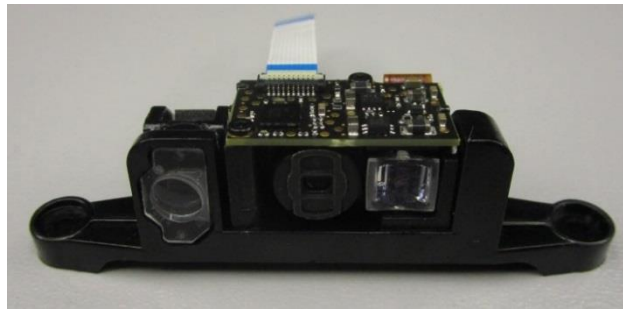
Photograph 18: SKORPIO X4 -Supercap



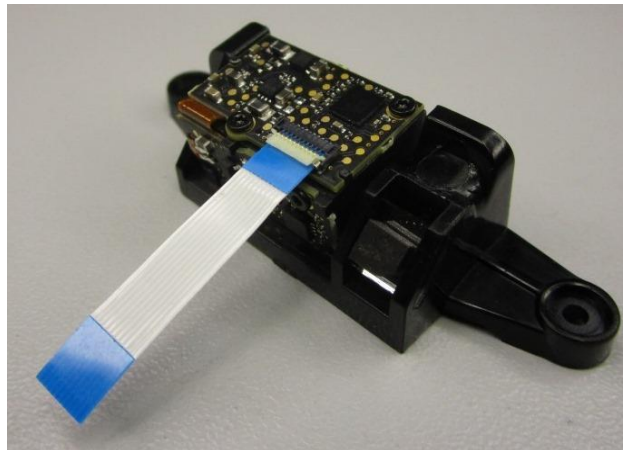
Photograph 19: SKORPIO X4 – Barcode Reader Assembly-1D Imager



Photograph 20: SKORPIO X4 – Barcode Reader Assembly-2D Imager



Photograph 21: SKORPIO X4 -1D Imager with plastic support and Green Spot-Front Side



Photograph 22: SKORPIO X4 -1D Imager with plastic support and Green Spot-Rear Side



Photograph 23: SKORPIO X4 -2D Imager with plastic support and Green Spot-Front Side

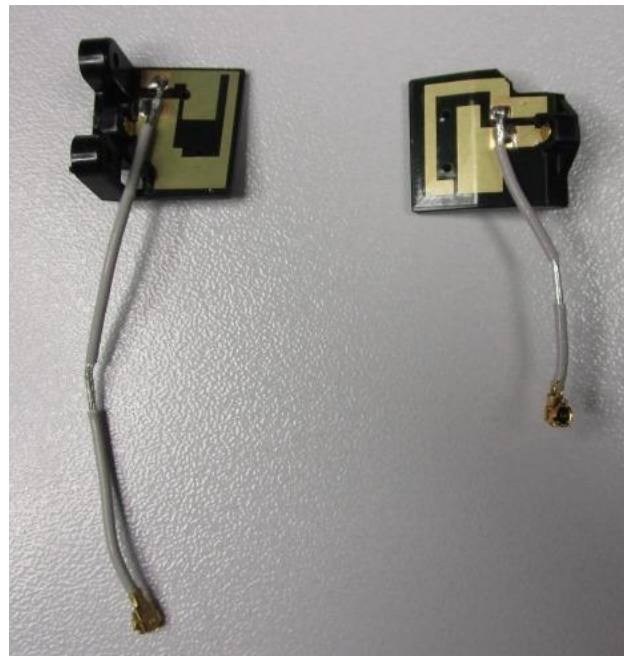


Photograph 24: SKORPIO X4 -2D Imager with plastic support and Green Spot-Rear Side

1.2. Equipment Under Test Radio Module +Antennas



Photograph 25: SKORPIO X4 –Integrated Radio Module- WL18MODGI



Photograph 26: SKORPIO X4 –Integrated Antennas ANT2 (on left) & ANT1 (on right)