

Datalogic S.r.l.
 Via San Vitalino 13
 40012 Calderara di Reno (BO)
 Italy
 Tel. +39 051 3147011
 Fax +39 051 3147205

©2018 Datalogic S.p.A. and/or its affiliates

♦ All rights reserved. ♦ Without limiting the rights under copyright, no part of this documentation may be reproduced, stored in or introduced into a retrieval system, or transmitted in any form or by any means, or for any purpose, without the express written permission of Datalogic S.p.A. and/or its affiliates. Owners of Datalogic products are hereby granted a non-exclusive, revocable license to reproduce and transmit this documentation for the purchaser's own internal business purposes. Purchaser shall not remove or alter any proprietary notices, including copyright notices, contained in this documentation and shall ensure that all notices appear on any reproductions of the documentation. Should future revisions of this manual be published, you can acquire printed versions by contacting your Datalogic representative. Electronic versions may either be downloadable from the Datalogic website (www.datalogic.com) or provided on appropriate media. If you visit our website and would like to make comments or suggestions about this or other Datalogic publications, please let us know via the "Contact Datalogic" page.

Disclaimer

Datalogic has taken reasonable measures to provide information in this manual that is complete and accurate, however, Datalogic reserves the right to change any specification at any time without prior notice. Datalogic and the Datalogic logo are registered trademarks of Datalogic S.p.A. in many countries, including the U.S.A. and the E.U. The Joya logo is a trademark of Datalogic S.p.A. and/or its affiliates, registered in the U.S. and the E.U. All other trademarks and brands are property of their respective owners.

Patents

See www.patents.datalogic.com for patent list.

Reference Documentation

For further information regarding Joya Touch A6 refer to the SDK Help on-line and to the Joya Touch A6 User's Manual, downloadable from our website www.datalogic.com.

Support Through the Website

Datalogic provides several services as well as technical support through its website. Log on to www.datalogic.com and click on the **SUPPORT** link which gives you access to: **Downloads** by selecting your product model from the dropdown list in the Search by Product field for specific Data Sheets, Manuals, Software & Utilities, and Drawings; **Repair Program** for On-Line Return Material Authorizations (RMAs) plus Repair Center contact information; **Customer Service** containing details about Maintenance Agreements; **Technical Support** through email or phone.

Warranty Terms and Conditions

The warranty period is 1 year for the device and 90 days for consumables (e.g. battery, power supply, cable etc.) from date of purchase at our company.



Joya A6
 Multi-Purpose Device for Retail



Quick Start Guide



See the Safety & Regulatory Addendum included with your product for additional regulatory, safety and legal information.

©2018 Datalogic S.p.A. and/or its affiliates. All rights reserved. Datalogic and the Datalogic logo are registered trademarks of Datalogic S.p.A. in many countries, including the U.S. and the E.U.



www.datalogic.com

Out of the Box

The Joya Touch A6 package contains:

- Joya Touch A6 (device with battery included)
- Quick Start Guide
- Safety & Regulatory Addendum

Remove all the components from their packaging; check their integrity and compare them with all the packing documents.



Keep the original packaging for use when sending products to the technical assistance center. Damage caused by improper packaging is not covered under the warranty.

General View

Front View



Back View



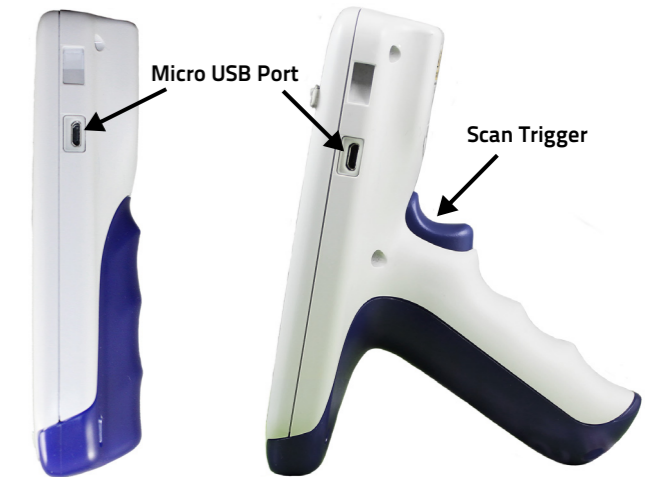
Top View



Side View

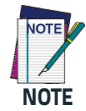
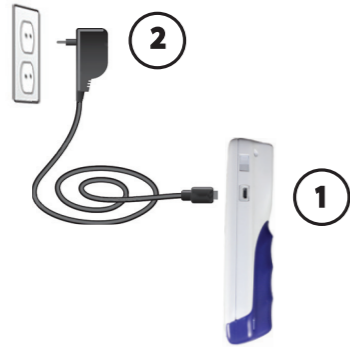
Handheld Models

Pistol Grip Models



Charging Instructions

The Joya Touch A6 is provided with the battery pack already installed and configured in Ship Mode at the factory. To wake the device from Ship Mode, connect it to a power supply (for more information, see the Getting Started section of the Joya Touch A6 User's Manual). The battery pack is initially not fully charged. Before using the device, charge the battery with the Datalogic micro-USB power supply (p/n 94ACC1380).



The Joya Touch A6 gets warm during charging. This is normal and does not mean a malfunction.

Scanning and Imaging Imager Data Capture



LINEAR BARCODE

2D MATRIX SYMBOL



Relative Size and Location of Aiming System Pattern

