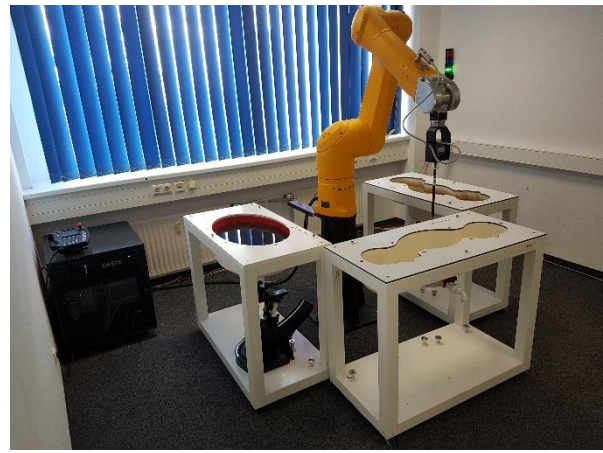


Annex D
Photo documentation

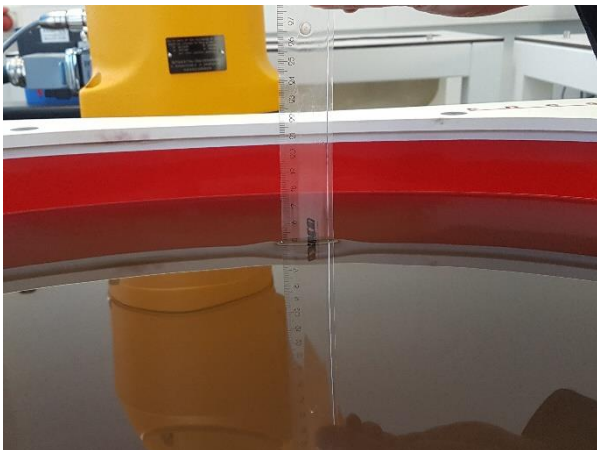
1. SAR measurement System
2. Photographs of Tissue Simulate Liquid
3. Photographs of EUT test position
4. EUT Constructional Details

1. SAR measurement System



2. Photographs of Tissue Simulate Liquid

Photo 1: Tissue Simulant Liquid Body 600-6000MHz



3. Photographs of EUT test position

Photo 1: Front side 0mm



Photo 2: Back side 0mm



Photo 3: Left side 0mm



Photo 4: Right side 0mm



Photo 5: Left touch 0mm

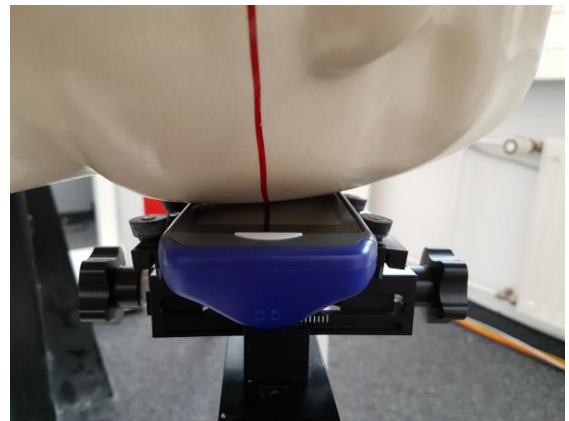
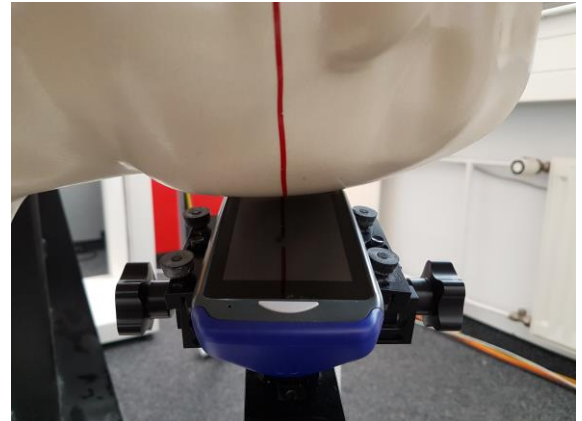


Photo 6: Left tilt 0mm



4. EUT Constructional Details

Photo 1: Front View



Photo 2: Back View



Photo 3: Left View



Photo 4: Right View

