

Appendix D. SAR Test Setup Photos

Body-Worn Exposure Condition



Front (Hand-held) with Holster at 0mm



Front (Wired(GUN)) with Holster at 0mm



Back (Hand-held) with Holster at 0mm

Extremity Exposure Condition



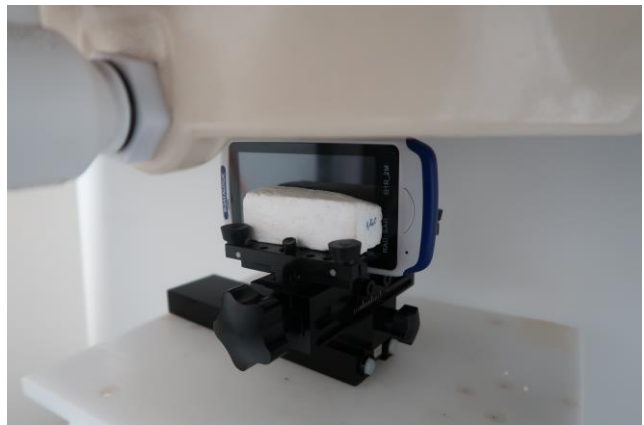
Front(Hand-held) at 0 mm



Back(Hand-held) at 0mm



Left side(Hand-held) at 0 mm



Right side(Hand-held) at 0 mm



Bottom side(Hand-held) at 0 mm