

# ELECTROMAGNETIC EMISSIONS COMPLIANCE REPORT

## UN-INTENTIONAL RADIATOR CERTIFICATION TO FCC PART 18 SUBPART C VERIFICATION REQUIREMENT

OF

**Product Name:** Joya Touch Single Slot Dock Charge Only

**Brand Name:** DATALOGIC

**Model No.:** Joya Touch Single Slot Dock Charge Only

**Added Model(s):** N/A

**Based on SGS  
EMC Report No.:** E1/2017/70205

**Issue Date:** Feb. 26, 2018

**FCC Rule Part:** FCC Rules and Regulations Part 18(2016)

**Prepared for:** Datalogic S.r.l.  
Via S. Vitalino, 13-40012 Lippo di  
Calderara di Reno (BO) - Italy

**Prepared by:** SGS Taiwan Ltd.  
Electronics & Communication Laboratory  
No.2, Keji 1st Rd., Guishan Dist., Taoyuan  
City 333, Taiwan (R.O.C.)



Unless otherwise stated the results shown in this test report refer only to the sample(s) tested and such sample(s) are retained for 90 days only.  
除非另有說明，此報告結果僅對測試之樣品負責，同時此樣品僅保留90天。本報告未經本公司書面許可，不可部份複製。

This document is issued by the Company subject to its General Conditions of Service printed overleaf, available on request or accessible at [www.sgs.com/terms\\_and\\_conditions.htm](http://www.sgs.com/terms_and_conditions.htm) and for electronic format documents, subject to Terms and Conditions for Electronic Documents at [www.sgs.com/terms\\_e-document.htm](http://www.sgs.com/terms_e-document.htm). Attention is drawn to the limitation of liability, indemnification and jurisdiction issues defined therein. Any holder of this document is advised that information contained hereon reflects the Company's findings at the time of its intervention only and within the limits of Client's instructions, if any. The Company's sole responsibility is to its Client and this document does not exonerate parties to a transaction from exercising all their rights and obligations under the transaction documents. This document cannot be reproduced except in full, without prior written approval of the Company. Any unauthorized alteration, forgery or falsification of the content or appearance of this document is unlawful and offenders may be prosecuted to the fullest extent of the law.

**DECLARATION OF COMPLIANCE**

**Applicant:** Datalogic S.r.l.  
Via S. Vitalino, 13-40012 Lippo di Calderara di Reno (BO) - Italy

**Manufacturer:** Datalogic S.r.l.  
Via S. Vitalino, 13-40012 Lippo di Calderara di Reno (BO) - Italy

**Equipment Under Test:** Joya Touch Single Slot Dock Charge Only

**Brand Name:** DATALOGIC

**Model No.:** Joya Touch Single Slot Dock Charge Only

**Added Model(s) :** N/A

**Model Difference:** N/A

**File Number:** MH/2018/10207

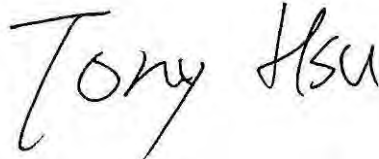
**Date of EUT Received:** Jan. 19, 2018

For the configuration tested, the EUT complied with the standards specified on Page 1.

**Remarks:****We hereby certify that:**

The above equipment was tested by SGS Taiwan Ltd. The test data, data evaluation, test procedures, and equipment configurations shown in this report were made in accordance with the procedures given in ANSI C63.4 :2014, MP-5 and the energy emitted by the sample EUT tested as described in this report is in compliance with conducted and radiated emission limits of FCC Rules Part 18

The test results of this report relate only to the tested sample identified in this report.

**Approved By****Date**

Feb. 26, 2018

**Tony Hsu (Asst. Manager)**

Unless otherwise stated the results shown in this test report refer only to the sample(s) tested and such sample(s) are retained for 90 days only.  
除非另有說明，此報告結果僅對測試之樣品負責，同時此樣品僅保留90天。本報告未經本公司書面許可，不可部份複製。

This document is issued by the Company subject to its General Conditions of Service printed overleaf, available on request or accessible at [www.sgs.com/terms\\_and\\_conditions.htm](http://www.sgs.com/terms_and_conditions.htm) and for electronic format documents, subject to Terms and Conditions for Electronic Documents at [www.sgs.com/terms\\_e-document.htm](http://www.sgs.com/terms_e-document.htm). Attention is drawn to the limitation of liability, indemnification and jurisdiction issues defined therein. Any holder of this document is advised that information contained hereon reflects the Company's findings at the time of its intervention only and within the limits of Client's instructions, if any. The Company's sole responsibility is to its Client and this document does not exonerate parties to a transaction from exercising all their rights and obligations under the transaction documents. This document cannot be reproduced except in full, without prior written approval of the Company. Any unauthorized alteration, forgery or falsification of the content or appearance of this document is unlawful and offenders may be prosecuted to the fullest extent of the law.

## Version

Report Number	Version No.	Description	Date
E1/2017/70205	00	Original report	Oct. 26, 2017
MH/2018/10207	01	Added FCC ID: U4GJNGSSDLITE	Feb. 26, 2018

Unless otherwise stated the results shown in this test report refer only to the sample(s) tested and such sample(s) are retained for 90 days only.

除非另有說明，此報告結果僅對測試之樣品負責，同時此樣品僅保留90天。本報告未經本公司書面許可，不可部份複製。

This document is issued by the Company subject to its General Conditions of Service printed overleaf, available on request or accessible at [www.sgs.com/terms\\_and\\_conditions.htm](http://www.sgs.com/terms_and_conditions.htm) and for electronic format documents, subject to Terms and Conditions for Electronic Documents at [www.sgs.com/terms\\_e-document.htm](http://www.sgs.com/terms_e-document.htm). Attention is drawn to the limitation of liability, indemnification and jurisdiction issues defined therein. Any holder of this document is advised that information contained hereon reflects the Company's findings at the time of its intervention only and within the limits of Client's instructions, if any. The Company's sole responsibility is to its Client and this document does not exonerate parties to a transaction from exercising all their rights and obligations under the transaction documents. This document cannot be reproduced except in full, without prior written approval of the Company. Any unauthorized alteration, forgery or falsification of the content or appearance of this document is unlawful and offenders may be prosecuted to the fullest extent of the law.

# Contents

<b>1. GENERAL INFORMATION.....</b>	<b>5</b>
1.1 APPLICANT & MANUFACTURER INFORMATION .....	5
1.2 GENERAL DESCRIPTION OF EUT .....	5
1.3 DETAILS OF EUT .....	5
1.4 OPERATION PROCEDURE .....	6
1.5 DESCRIPTION OF SUPPORT UNITS .....	6
1.6 MODIFICATION LIST.....	6
1.7 ACCESSORIES CABLE LIST .....	6
1.8 TEST SET-UP CONFIGURATION.....	7
1.9 MEASUREMENT PROCEDURE.....	8
1.10 STANDARDS APPLICABLE FOR TESTING.....	8
1.11 SUMMARY OF RESULTS .....	8
<b>2. EMISSION .....</b>	<b>9</b>
2.1 TEST RESULTS .....	9
2.2 FREQUENCY RANGE.....	9
2.3 LIMITS OF CONDUCTED AND RADIATED EMISSION .....	10
2.3.1 LIMITS OF CONDUCTED EMISSION FOR FCC PART 18, SUBPART C .....	10
2.3.2 LIMITS OF RADIATED EMISSIONS FOR FCC PART 18, SUBPART C .....	12
2.4. TEST OF CONDUCTED EMISSION.....	14
2.4.1 TEST EQUIPMENTS .....	14
2.4.2 OPERATING ENVIRONMENT .....	15
2.4.3 MEASUREMENT DATA.....	16
2.5 TEST OF RADIATED EMISSION.....	22
2.5.1 TEST INSTRUMENTS .....	22
2.5.2 OPERATING ENVIRONMENT .....	22
2.5.3 MEASUREMENT DATA (3M METHOD) .....	23
<b>3. PHOTOGRAPHS OF TEST .....</b>	<b>35</b>
<b>4. PHOTOGRAPHS OF PRODUCT.....</b>	<b>37</b>

Unless otherwise stated the results shown in this test report refer only to the sample(s) tested and such sample(s) are retained for 90 days only.

除非另有說明，此報告結果僅對測試之樣品負責，同時此樣品僅保留90天。本報告未經本公司書面許可，不可部份複製。

This document is issued by the Company subject to its General Conditions of Service printed overleaf, available on request or accessible at [www.sgs.com/terms\\_and\\_conditions.htm](http://www.sgs.com/terms_and_conditions.htm) and for electronic format documents, subject to Terms and Conditions for Electronic Documents at [www.sgs.com/terms\\_e-document.htm](http://www.sgs.com/terms_e-document.htm). Attention is drawn to the limitation of liability, indemnification and jurisdiction issues defined therein. Any holder of this document is advised that information contained hereon reflects the Company's findings at the time of its intervention only and within the limits of Client's instructions, if any. The Company's sole responsibility is to its Client and this document does not exonerate parties to a transaction from exercising all their rights and obligations under the transaction documents. This document cannot be reproduced except in full, without prior written approval of the Company. Any unauthorized alteration, forgery or falsification of the content or appearance of this document is unlawful and offenders may be prosecuted to the fullest extent of the law.

# 1. General Information

## 1.1 Applicant & Manufacturer Information

Applicant : Datalogic S.r.l.  
 Address of Applicant : Via S. Vitalino, 13-40012 Lippo di Calderara di Reno (BO) - Italy  
 e-mail Address of Applicant: : Ruggero.Cacioppo@datalogic.com  
 Manufacturer : Datalogic S.r.l.  
 Address of Manufacturer : Via S. Vitalino, 13-40012 Lippo di Calderara di Reno (BO) - Italy

## 1.2 General Description of EUT

Product Name : Joya Touch Single Slot Dock Charge Only  
 Brand Name : DATALOGIC  
 Model No. : Joya Touch Single Slot Dock Charge Only  
 Added Model(s) : N/A  
 Model Difference : N/A  
 Maximum Energy Generated : Charger:0 ~ 5W  
 FCC ID : U4GJNGSSDLITE

## 1.3 Details of EUT

Power Supply : AC 100~240V, 50~60Hz  
 Modes/Function : Mode 1. Battery LowCharger mode  
 Mode 2. Battery middle Charger mode  
 Mode 3. Battery High Charger mode  
 Worst case : CE, Below RE worst case :  
 Mode 1. Charger mode  
 Highest operate description : 205 kHz  
 Adapter : Model No.: BI24-050300-I  
 I/P : AC 100-240V, 50/60Hz, 0.8A  
 O/P : DC 5V, 3A

Unless otherwise stated the results shown in this test report refer only to the sample(s) tested and such sample(s) are retained for 90 days only.  
 除非另有說明，此報告結果僅對測試之樣品負責，同時此樣品僅保留90天。本報告未經本公司書面許可，不可部份複製。

This document is issued by the Company subject to its General Conditions of Service printed overleaf, available on request or accessible at [www.sgs.com/terms\\_and\\_conditions.htm](http://www.sgs.com/terms_and_conditions.htm) and for electronic format documents, subject to Terms and Conditions for Electronic Documents at [www.sgs.com/terms\\_e-document.htm](http://www.sgs.com/terms_e-document.htm). Attention is drawn to the limitation of liability, indemnification and jurisdiction issues defined therein. Any holder of this document is advised that information contained hereon reflects the Company's findings at the time of its intervention only and within the limits of Client's instructions, if any. The Company's sole responsibility is to its Client and this document does not exonerate parties to a transaction from exercising all their rights and obligations under the transaction documents. This document cannot be reproduced except in full, without prior written approval of the Company. Any unauthorized alteration, forgery or falsification of the content or appearance of this document is unlawful and offenders may be prosecuted to the fullest extent of the law.

### 1.4 Operation Procedure

Mode 1. Battery LowCharger mode

1. Let EUT connect to the transformer and peripheral PDA plug in the EUT to charge.
2. Start the test.

Mode 2. Battery middle Charger mode

1. Let EUT connect to the transformer and peripheral PDA plug in the EUT to charge.
2. Start the test.

Mode 3. Battery High Charger mode

1. Let EUT connect to the transformer and peripheral PDA plug in the EUT to charge.
2. Start the test.

### 1.5 Description of Support Units

PRODUCT	MANUFACTURER	MODEL NO.	SERIAL NO.
Scanner PDA	DATALOGIC	JOYA TOUCH	E17E17511

#### Support Equipment Used in Tested Cable

Cable Type	Core	Length	Shielding/Non-shielding
N/A	N/A	N/A	N/A

### 1.6 Modification List

No modification was made by SGS Taiwan Electronics & Communication Laboratory.

### 1.7 Accessories Cable List

Cable Type	Core	Length	Shielding/Non-shielding
adapter dc output	N/A	1.8m	Non-shielding

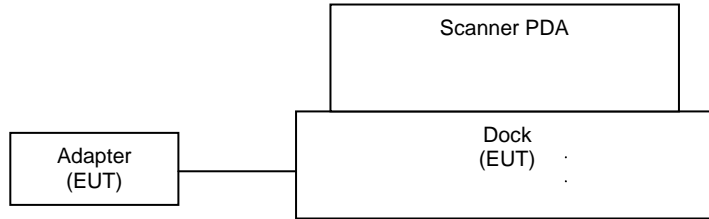
Unless otherwise stated the results shown in this test report refer only to the sample(s) tested and such sample(s) are retained for 90 days only.

除非另有說明，此報告結果僅對測試之樣品負責，同時此樣品僅保留90天。本報告未經本公司書面許可，不可部份複製。

This document is issued by the Company subject to its General Conditions of Service printed overleaf, available on request or accessible at [www.sgs.com/terms\\_and\\_conditions.htm](http://www.sgs.com/terms_and_conditions.htm) and for electronic format documents, subject to Terms and Conditions for Electronic Documents at [www.sgs.com/terms\\_e-document.htm](http://www.sgs.com/terms_e-document.htm). Attention is drawn to the limitation of liability, indemnification and jurisdiction issues defined therein. Any holder of this document is advised that information contained hereon reflects the Company's findings at the time of its intervention only and within the limits of Client's instructions, if any. The Company's sole responsibility is to its Client and this document does not exonerate parties to a transaction from exercising all their rights and obligations under the transaction documents. This document cannot be reproduced except in full, without prior written approval of the Company. Any unauthorized alteration, forgery or falsification of the content or appearance of this document is unlawful and offenders may be prosecuted to the fullest extent of the law.

## 1.8 Test Set-Up Configuration

Mode 1~3



Unless otherwise stated the results shown in this test report refer only to the sample(s) tested and such sample(s) are retained for 90 days only.

除非另有說明，此報告結果僅對測試之樣品負責，同時此樣品僅保留90天。本報告未經本公司書面許可，不可部份複製。

This document is issued by the Company subject to its General Conditions of Service printed overleaf, available on request or accessible at [www.sgs.com/terms\\_and\\_conditions.htm](http://www.sgs.com/terms_and_conditions.htm) and for electronic format documents, subject to Terms and Conditions for Electronic Documents at [www.sgs.com/terms\\_e-document.htm](http://www.sgs.com/terms_e-document.htm). Attention is drawn to the limitation of liability, indemnification and jurisdiction issues defined therein. Any holder of this document is advised that information contained hereon reflects the Company's findings at the time of its intervention only and within the limits of Client's instructions, if any. The Company's sole responsibility is to its Client and this document does not exonerate parties to a transaction from exercising all their rights and obligations under the transaction documents. This document cannot be reproduced except in full, without prior written approval of the Company. Any unauthorized alteration, forgery or falsification of the content or appearance of this document is unlawful and offenders may be prosecuted to the fullest extent of the law.

### 1.9 Measurement Procedure

Conducted Emission Testing was performed according MP-5 in a shielded room with peripherals placed on a table, 0.8m high over a metal floor. It was located more than required distance away from the shielded room wall.

Radiated Emission Testing was performed according to MP-5 at the semi-anechoic chamber (10m) or 966 semi-anechoic chamber (3m) test site. The EUT was placed on a 0.8m high table along with the peripherals. The turn table was separated 3m from the antenna. Cables were placed in a position to produce maximum emissions as determined by experimentation, and operation mode was selected for production of maximum emission.

The frequencies and amplitudes of maximum emission were measured at varying azimuths, antenna heights and antenna polarities. Maximum emission levels are then reported.

### 1.10 Standards Applicable for Testing

Tests to be carried out under FCC Part 18, Subpart C

Test Standards	Status
FCC Part 18, Subpart C	Applicable
Deviation from Standard	No deviation

### 1.11 Summary of Results

Highest Emission					
Standard	Test Type	Result	Phase/Pol.	Frequency(MHz)	Margin(dB)
FCC Part 18 Subpart C	Conducted Emission	PASS	Line	10.7300	-14.80 (AVG)
			Neutral	0.1500	-13.48 (AVG)
	Radiated Emission	PASS	Hor.	0.0138	-30.57 (QP)

Note: The EUT is non-consumer / medical diathermy product. Refer to user manual for detail information.

Unless otherwise stated the results shown in this test report refer only to the sample(s) tested and such sample(s) are retained for 90 days only.  
除非另有說明，此報告結果僅對測試之樣品負責，同時此樣品僅保留90天。本報告未經本公司書面許可，不可部份複製。

This document is issued by the Company subject to its General Conditions of Service printed overleaf, available on request or accessible at [www.sgs.com/terms\\_and\\_conditions.htm](http://www.sgs.com/terms_and_conditions.htm) and for electronic format documents, subject to Terms and Conditions for Electronic Documents at [www.sgs.com/terms\\_e-document.htm](http://www.sgs.com/terms_e-document.htm). Attention is drawn to the limitation of liability, indemnification and jurisdiction issues defined therein. Any holder of this document is advised that information contained hereon reflects the Company's findings at the time of its intervention only and within the limits of Client's instructions, if any. The Company's sole responsibility is to its Client and this document does not exonerate parties to a transaction from exercising all their rights and obligations under the transaction documents. This document cannot be reproduced except in full, without prior written approval of the Company. Any unauthorized alteration, forgery or falsification of the content or appearance of this document is unlawful and offenders may be prosecuted to the fullest extent of the law.



## 2. EMISSION

### 2.1 Test Results

	Results
Conducted Emission	<b>Pass</b>
Radiated Emission	<b>Pass</b>

### 2.2 Frequency Range

Conducted Emission : 9 kHz - 30 MHz

Radiated Emission :

Frequency band in which device operates (MHz)	Range of frequency measurements	
	Lowest frequency	Highest frequency
Below 1.705	Lowest frequency generated in the device, but not lower than 9 kHz	30 MHz.
1.705 to 30	Lowest frequency generated in the device, but not lower than 9 kHz	400 MHz.
30 to 500	Lowest frequency generated in the device or 25 MHz, whichever is lower	Tenth harmonic or 1,000 MHz, whichever is higher.
500 to 1,000	Lowest frequency generated in the device or 100 MHz, whichever is lower	Tenth harmonic.
Above 1,000	.....do	Tenth harmonic or highest detectable emission.

Unless otherwise stated the results shown in this test report refer only to the sample(s) tested and such sample(s) are retained for 90 days only.  
除非另有說明，此報告結果僅對測試之樣品負責，同時此樣品僅保留90天。本報告未經本公司書面許可，不可部份複製。

This document is issued by the Company subject to its General Conditions of Service printed overleaf, available on request or accessible at [www.sgs.com/terms\\_and\\_conditions.htm](http://www.sgs.com/terms_and_conditions.htm) and for electronic format documents, subject to Terms and Conditions for Electronic Documents at [www.sgs.com/terms\\_e-document.htm](http://www.sgs.com/terms_e-document.htm). Attention is drawn to the limitation of liability, indemnification and jurisdiction issues defined therein. Any holder of this document is advised that information contained hereon reflects the Company's findings at the time of its intervention only and within the limits of Client's instructions, if any. The Company's sole responsibility is to its Client and this document does not exonerate parties to a transaction from exercising all their rights and obligations under the transaction documents. This document cannot be reproduced except in full, without prior written approval of the Company. Any unauthorized alteration, forgery or falsification of the content or appearance of this document is unlawful and offenders may be prosecuted to the fullest extent of the law.

## 2.3 Limits of Conducted and Radiated Emission

### 2.3.1 Limits of Conducted Emission for FCC Part 18, Subpart C

According to conduction limits stated in 18.307, when equipment designed to be connected to the public utility (AC) power line, the radio frequency voltage that is conducted back onto the AC power line on any frequency or frequencies shall not exceed the limits in the following tables. Compliance with the provisions of this paragraph shall be based on the measurement of the radio frequency voltage between each power line and ground at the power terminal using a 50  $\mu$ H/50 ohms line impedance stabilization network (LISN).

(a) All induction cooking ranges and ultrasonic equipment:

Frequency of emission (MHz)	Conducted limit (dB $\mu$ V)	
	Quasi-peak	Average
0.009 – 0.05	110	-
0.05 – 0.15	90 – 80*	-
0.15 – 0.5	66 – 56*	56 – 46*
0.5 - 5	56	46
5 - 30	60	50

\*Decreases with the logarithm of the frequency

Unless otherwise stated the results shown in this test report refer only to the sample(s) tested and such sample(s) are retained for 90 days only.  
除非另有說明，此報告結果僅對測試之樣品負責，同時此樣品僅保留90天。本報告未經本公司書面許可，不可部份複製。

This document is issued by the Company subject to its General Conditions of Service printed overleaf, available on request or accessible at [www.sgs.com/terms\\_and\\_conditions.htm](http://www.sgs.com/terms_and_conditions.htm) and for electronic format documents, subject to Terms and Conditions for Electronic Documents at [www.sgs.com/terms\\_e-document.htm](http://www.sgs.com/terms_e-document.htm). Attention is drawn to the limitation of liability, indemnification and jurisdiction issues defined therein. Any holder of this document is advised that information contained hereon reflects the Company's findings at the time of its intervention only and within the limits of Client's instructions, if any. The Company's sole responsibility is to its Client and this document does not exonerate parties to a transaction from exercising all their rights and obligations under the transaction documents. This document cannot be reproduced except in full, without prior written approval of the Company. Any unauthorized alteration, forgery or falsification of the content or appearance of this document is unlawful and offenders may be prosecuted to the fullest extent of the law.

(b) All other part 18 consumer devices:

Frequency of emission (MHz)	Conducted limit (dBμV)	
	Quasi-peak	Average
0.15 – 0.5	66 – 56*	56 – 46*
0.5 - 5	56	46
5 - 30	60	50

\*Decreases with the logarithm of the frequency

(c) RF lighting devices:

Frequency MHz	Emissions (μV)	Emissions (dBμV)
Non-consumer equipment:		
0.45 - 1.6	1000	60
1.6 - 3.0	3000	69.54
Consumer equipment:		
0.45 – 2.51	250	48
2.51 – 3.0	3000	69.5
3.0 - 30	250	48

Unless otherwise stated the results shown in this test report refer only to the sample(s) tested and such sample(s) are retained for 90 days only.

除非另有說明，此報告結果僅對測試之樣品負責，同時此樣品僅保留90天。本報告未經本公司書面許可，不可部份複製。

This document is issued by the Company subject to its General Conditions of Service printed overleaf, available on request or accessible at [www.sgs.com/terms\\_and\\_conditions.htm](http://www.sgs.com/terms_and_conditions.htm) and for electronic format documents, subject to Terms and Conditions for Electronic Documents at [www.sgs.com/terms\\_e-document.htm](http://www.sgs.com/terms_e-document.htm). Attention is drawn to the limitation of liability, indemnification and jurisdiction issues defined therein. Any holder of this document is advised that information contained hereon reflects the Company's findings at the time of its intervention only and within the limits of Client's instructions, if any. The Company's sole responsibility is to its Client and this document does not exonerate parties to a transaction from exercising all their rights and obligations under the transaction documents. This document cannot be reproduced except in full, without prior written approval of the Company. Any unauthorized alteration, forgery or falsification of the content or appearance of this document is unlawful and offenders may be prosecuted to the fullest extent of the law.

### 2.3.2 Limits of Radiated Emissions for FCC Part 18, Subpart C

According to 18.305 (b), the field strength levels of emissions which lie outside the bands specified in §18.301, unless otherwise indicated, shall not exceed the following:

Equipment	Operating Frequency	RF Power (watts)	Field Strength Limit (µV/m)	Distance (Meters)	Field Strength Limit @ 3m (dBµV/m)
Any type unless otherwise specified (miscellaneous)	Any ISM frequency	Below 500	25	300	68
		500 or more	$25 \times \text{SQRT}(\text{power}/500)$	<sup>1</sup> 300	$20 \log(25 \times \sqrt{(\text{power}/500)^2 + 40})$
	Any non-ISM frequency	Below 500	15	300	63.5
		500 or more	$15 \times \text{AQRT}(\text{power}/500)$	300	$20 \log(25 \times \sqrt{(\text{power}/500)^2 + 52.7})$
Industrial heaters and RF stabilized arc welders	On or below 5,725 MHz	Any	10	1,600	64.5
	Above 5,725 MHz	Any	( <sup>2</sup> )	( <sup>2</sup> )	---
Medical diathermy	Any ISM frequency	Any	25	300	68
	Any non-ISM frequency	Any	15	300	63.5
Ultrasonic	Below 490 kHz	Below 500	$2,400/F(\text{kHz})$	300	$20 \log(2,400/F(\text{kHz})) + 40$
	490 to 1,600 kHz	500 or more	$2,400/F(\text{kHz}) \times \text{SQRT}(\text{power}/500)$	300	$20 \log(2,400/F(\text{kHz})) \times \sqrt{(\text{power}/500)^2 + 60.8}$
		Any	$2,400/F(\text{kHz})$	30	$20 \log(2,400/F(\text{kHz})) + 20$
Above 1,600 kHz	Any	15	30	43.5	
Induction cooking ranges	Below 90 kHz	Any	1,500	<sup>4</sup> 30	83.5
	On or above 90 kHz	Any	300	<sup>4</sup> 30	69.5

Unless otherwise stated the results shown in this test report refer only to the sample(s) tested and such sample(s) are retained for 90 days only.  
除非另有說明，此報告結果僅對測試之樣品負責，同時此樣品僅保留90天。本報告未經本公司書面許可，不可部份複製。

This document is issued by the Company subject to its General Conditions of Service printed overleaf, available on request or accessible at [www.sgs.com/terms\\_and\\_conditions.htm](http://www.sgs.com/terms_and_conditions.htm) and for electronic format documents, subject to Terms and Conditions for Electronic Documents at [www.sgs.com/terms\\_e-document.htm](http://www.sgs.com/terms_e-document.htm). Attention is drawn to the limitation of liability, indemnification and jurisdiction issues defined therein. Any holder of this document is advised that information contained hereon reflects the Company's findings at the time of its intervention only and within the limits of Client's instructions, if any. The Company's sole responsibility is to its Client and this document does not exonerate parties to a transaction from exercising all their rights and obligations under the transaction documents. This document cannot be reproduced except in full, without prior written approval of the Company. Any unauthorized alteration, forgery or falsification of the content or appearance of this document is unlawful and offenders may be prosecuted to the fullest extent of the law.

- 1 Field strength may not exceed 10  $\mu\text{V/m}$  at 1600 meters. Consumer equipment operating below 1000 MHz is not permitted the increase in field strength otherwise permitted here for power over 500 watts.
- 2 Reduced to the greatest extent possible.
- 3 Field strength may not exceed 10  $\mu\text{V/m}$  at 1600 meters. Consumer equipment is not permitted the increase in field strength otherwise permitted here for over 500 watts.
- 4 Induction cooking ranges manufactured prior to February 1, 1980, shall be subject to the field strength limits for miscellaneous ISM equipment.

According to 18.305 (c), the field strength limits for RF lighting devices shall be the following:

Frequency (MHz)	Distance (Meters)	Field Strength Limit ( $\mu\text{V/m}$ )	Field Strength Limit @ 3m (dB $\mu\text{V/m}$ )
Non-consumer equipment:			
30 - 88	30	30	49.54
88 - 216	30	50	54
216 - 1000	30	70	56.9
Consumer equipment:			
30 - 88	30	10	40
88 - 216	30	15	43.5
216 - 1000	30	20	46.1

According to 18.307(f): For ultrasonic equipment, compliance with the conducted limits shall preclude the need to show compliance with the field strength limits below 30 MHz unless requested by the Commission.

Unless otherwise stated the results shown in this test report refer only to the sample(s) tested and such sample(s) are retained for 90 days only.  
除非另有說明，此報告結果僅對測試之樣品負責，同時此樣品僅保留90天。本報告未經本公司書面許可，不可部份複製。

This document is issued by the Company subject to its General Conditions of Service printed overleaf, available on request or accessible at [www.sgs.com/terms\\_and\\_conditions.htm](http://www.sgs.com/terms_and_conditions.htm) and for electronic format documents, subject to Terms and Conditions for Electronic Documents at [www.sgs.com/terms\\_e-document.htm](http://www.sgs.com/terms_e-document.htm). Attention is drawn to the limitation of liability, indemnification and jurisdiction issues defined therein. Any holder of this document is advised that information contained hereon reflects the Company's findings at the time of its intervention only and within the limits of Client's instructions, if any. The Company's sole responsibility is to its Client and this document does not exonerate parties to a transaction from exercising all their rights and obligations under the transaction documents. This document cannot be reproduced except in full, without prior written approval of the Company. Any unauthorized alteration, forgery or falsification of the content or appearance of this document is unlawful and offenders may be prosecuted to the fullest extent of the law.

## 2.4. Test of Conducted Emission

### 2.4.1 Test Equipments

#### For Mode 1

SGS Conducted_Emission HWAYA Conducted Room No.A_EMC					
EQUIPMENT TYPE	Manufacturer	Model Number	Serial Number	Calibration Date	Calibration Due
EMI Test Receiver	R&S	ESCI 3	101311	2017/6/23	2018/6/22
Coaxial Cables	EMC Instruments Corp	EMCRG58-BM-BM-3000	160812	2016/8/30	2017/8/29
LISN	SCHWARZBECK	NSLK 8127	8127-648	2017/6/18	2018/6/17
Pulse Limiter	Narda S.T.S.	PMM PL01	1110X30602	2016/8/12	2017/8/11
LISN	Schwarzbeck	NSLK 8128	NSLK8128-300	2017/8/4	2018/8/3
Test S/W	Farad	EZ-EMC	Ver. SGS-03A2	N.C.R.	N.C.R.

SGS Taiwan LTD. Electronics & Communication Laboratory  
No.2, Keji 1st Rd., Guishan Dist., Taoyuan City 333, Taiwan (R.O.C.)  
Measurement Uncertainty of Conducted Emission  
Expanded uncertainty (K=2) of conducted emission is 2.25 dB  
Expanded uncertainty (K=2) of ISN conducted emission is 2.57 dB

Unless otherwise stated the results shown in this test report refer only to the sample(s) tested and such sample(s) are retained for 90 days only.

除非另有說明，此報告結果僅對測試之樣品負責，同時此樣品僅保留90天。本報告未經本公司書面許可，不可部份複製。

This document is issued by the Company subject to its General Conditions of Service printed overleaf, available on request or accessible at [www.sgs.com/terms\\_and\\_conditions.htm](http://www.sgs.com/terms_and_conditions.htm) and for electronic format documents, subject to Terms and Conditions for Electronic Documents at [www.sgs.com/terms\\_e-document.htm](http://www.sgs.com/terms_e-document.htm). Attention is drawn to the limitation of liability, indemnification and jurisdiction issues defined therein. Any holder of this document is advised that information contained hereon reflects the Company's findings at the time of its intervention only and within the limits of Client's instructions, if any. The Company's sole responsibility is to its Client and this document does not exonerate parties to a transaction from exercising all their rights and obligations under the transaction documents. This document cannot be reproduced except in full, without prior written approval of the Company. Any unauthorized alteration, forgery or falsification of the content or appearance of this document is unlawful and offenders may be prosecuted to the fullest extent of the law.

**For Mode 2~3**

SGS Conducted_Emission HWAYA Conducted Room No.A_EMC					
EQUIPMENT TYPE	Manufacturer	Model Number	Serial Number	Calibration Date	Calibration Due
EMI Test Receiver	R&S	ESCI 3	101311	2017/6/23	2018/6/22
Coaxial Cables	EMC Instruments Corp	EMCRG58-BM-BM-3000	160812	2017/8/12	2018/8/11
LISN	SCHWARZBECK	NSLK 8127	8127-648	2017/6/18	2018/6/17
Pulse Limiter	Narda S.T.S.	PMM PL01	1110X30602	2017/8/12	2018/8/11
LISN	Schwarzbeck	NSLK 8128	NSLK8128-300	2017/9/4	2018/9/3
ISN	TESEQ	ISN T800	34384	2018/4/9	2019/4/8
ISN	TESEQ	ISN ST08	36271	2017/9/30	2018/9/29
RF Current Probe	SCHWARZBECK	SW 9605	SW 9605-138	2017/10/13	2018/10/12
Capacitive Voltage Probe	SCHWARZBECK	CVP 9222	9222-031	2017/10/13	2018/10/12
DC LISN	SCHWARZBECK	NNBM 8124	8124-564	2017/12/6	2018/12/5
DC LISN	SCHWARZBECK	NNBM 8124	8124-565	2017/12/6	2018/12/5
High Voltage Probe	SCHWARZBECK	TK 9420	TK 9420-5223	2018/3/13	2019/3/12
Universal Digital Radio Communication Tester	R&S	CMU 200	119988	2018/2/22	2019/2/21
Wideband Radio Communication Tester	R&S	CMW 500	152303	2018/2/21	2019/2/20
Radio Communication Analyzer	Anritsu	MT8820C	6201465315	2017/12/10	2018/12/9
Test S/W	Farad	EZ-EMC	Ver. SGS-03A2	N.C.R.	N.C.R.

SGS Taiwan LTD. Electronics & Communication Laboratory  
No.2, Keji 1st Rd., Guishan Dist., Taoyuan City 333, Taiwan (R.O.C.)  
Measurement Uncertainty of Conducted Emission  
Expanded uncertainty Ulab(K=2) of conducted emission is 2.25 dB  
Expanded uncertainty Ulab(K=2) of ISN conducted emission is 2.57 dB  
Theory values uncertainty Ucispr 16-4-2 :2011+A1\_2014 (K=2) of AC mains conducted Emission is 3.44dB  
Theory values uncertainty Ucispr 16-4-2 :2011+A1\_2014 (K=2) of ISN conducted Emission is 4.59dB

**2.4.2 Operating Environment**

Temperature : 25 degree C

Humidity : 64 %RH

Atmospheric Pressure : 992 hpa

Unless otherwise stated the results shown in this test report refer only to the sample(s) tested and such sample(s) are retained for 90 days only.  
除非另有說明，此報告結果僅對測試之樣品負責，同時此樣品僅保留90天。本報告未經本公司書面許可，不可部份複製。

This document is issued by the Company subject to its General Conditions of Service printed overleaf, available on request or accessible at [www.sgs.com/terms\\_and\\_conditions.htm](http://www.sgs.com/terms_and_conditions.htm) and for electronic format documents, subject to Terms and Conditions for Electronic Documents at [www.sgs.com/terms\\_e-document.htm](http://www.sgs.com/terms_e-document.htm). Attention is drawn to the limitation of liability, indemnification and jurisdiction issues defined therein. Any holder of this document is advised that information contained hereon reflects the Company's findings at the time of its intervention only and within the limits of Client's instructions, if any. The Company's sole responsibility is to its Client and this document does not exonerate parties to a transaction from exercising all their rights and obligations under the transaction documents. This document cannot be reproduced except in full, without prior written approval of the Company. Any unauthorized alteration, forgery or falsification of the content or appearance of this document is unlawful and offenders may be prosecuted to the fullest extent of the law.



### 2.4.3 Measurement Data

#### Model No.:Joya Touch Single Slot Dock Charge Only Mode\_1\_L

Site : Conduction Room      Phase: **L1**      Temperature: 25 ℃  
 Limit: FCC Part 18 Conduction(QP)      Power: AC 120V/60Hz      Humidity: 64 %  
 Mode: Mode 1  
 Note:

#### Conducted Emission



No.	Mk.	Freq.	Reading Level	Correct Factor	Measurement	Limit	Over	Detector	Comment
		MHz	dBuV	dB	dBuV	dBuV	dB		
1		0.1500	39.70	0.34	40.04	66.00	-25.96	QP	
2		0.1500	36.70	0.34	37.04	56.00	-18.96	AVG	
3		0.1740	35.00	0.34	35.34	64.77	-29.43	QP	
4		0.1740	24.50	0.34	24.84	54.77	-29.93	AVG	
5		0.4340	27.60	0.34	27.94	57.18	-29.24	QP	
6		0.4340	21.80	0.34	22.14	47.18	-25.04	AVG	
7		2.4060	26.40	0.47	26.87	56.00	-29.13	QP	
8		2.4060	21.40	0.47	21.87	46.00	-24.13	AVG	
9		3.6220	31.40	0.55	31.95	56.00	-24.05	QP	
10		3.6220	26.50	0.55	27.05	46.00	-18.95	AVG	
11		10.7300	39.40	0.90	40.30	60.00	-19.70	QP	
12	*	10.7300	34.30	0.90	35.20	50.00	-14.80	AVG	

\*:Maximum data    x:Over limit    !:over margin

File :70205\Data :#2

Page: 1

Unless otherwise stated the results shown in this test report refer only to the sample(s) tested and such sample(s) are retained for 90 days only.

除非另有說明，此報告結果僅對測試之樣品負責，同時此樣品僅保留90天。本報告未經本公司書面許可，不可部份複製。

This document is issued by the Company subject to its General Conditions of Service printed overleaf, available on request or accessible at [www.sgs.com/terms\\_and\\_conditions.htm](http://www.sgs.com/terms_and_conditions.htm) and for electronic format documents, subject to Terms and Conditions for Electronic Documents at [www.sgs.com/terms\\_e-document.htm](http://www.sgs.com/terms_e-document.htm). Attention is drawn to the limitation of liability, indemnification and jurisdiction issues defined therein. Any holder of this document is advised that information contained hereon reflects the Company's findings at the time of its intervention only and within the limits of Client's instructions, if any. The Company's sole responsibility is to its Client and this document does not exonerate parties to a transaction from exercising all their rights and obligations under the transaction documents. This document cannot be reproduced except in full, without prior written approval of the Company. Any unauthorized alteration, forgery or falsification of the content or appearance of this document is unlawful and offenders may be prosecuted to the fullest extent of the law.



### Mode\_1\_N

Site : Conduction Room      Phase: **N**      Temperature: 25 °C  
 Limit: FCC Part 18 Conduction(QP)      Power: AC 120V/60Hz      Humidity: 64 %  
 Mode: Mode 1  
 Note:

#### Conducted Emission



No.	Mk.	Freq.	Reading Level	Correct Factor	Measurement	Limit	Over	Detector	Comment
		MHz	dBuV	dB	dBuV	dBuV	dB		
1		0.1500	44.60	0.42	45.02	66.00	-20.98	QP	
2	*	0.1500	42.10	0.42	42.52	56.00	-13.48	AVG	
3		0.1700	40.60	0.42	41.02	64.96	-23.94	QP	
4		0.1700	33.00	0.42	33.42	54.96	-21.54	AVG	
5		0.2940	33.70	0.41	34.11	60.41	-26.30	QP	
6		0.2940	29.10	0.41	29.51	50.41	-20.90	AVG	
7		0.4780	34.60	0.42	35.02	56.37	-21.35	QP	
8		0.4780	29.60	0.42	30.02	46.37	-16.35	AVG	
9		3.5260	32.00	0.47	32.47	56.00	-23.53	QP	
10		3.5260	27.00	0.47	27.47	46.00	-18.53	AVG	
11		10.4780	37.70	0.67	38.37	60.00	-21.63	QP	
12		10.4780	32.40	0.67	33.07	50.00	-16.93	AVG	

\*:Maximum data    x:Over limit    |:over margin

File :70205\Data :#1

Page: 1

Unless otherwise stated the results shown in this test report refer only to the sample(s) tested and such sample(s) are retained for 90 days only.

除非另有說明，此報告結果僅對測試之樣品負責，同時此樣品僅保留90天。本報告未經本公司書面許可，不可部份複製。

This document is issued by the Company subject to its General Conditions of Service printed overleaf, available on request or accessible at [www.sgs.com/terms\\_and\\_conditions.htm](http://www.sgs.com/terms_and_conditions.htm) and for electronic format documents, subject to Terms and Conditions for Electronic Documents at [www.sgs.com/terms\\_e-document.htm](http://www.sgs.com/terms_e-document.htm). Attention is drawn to the limitation of liability, indemnification and jurisdiction issues defined therein. Any holder of this document is advised that information contained hereon reflects the Company's findings at the time of its intervention only and within the limits of Client's instructions, if any. The Company's sole responsibility is to its Client and this document does not exonerate parties to a transaction from exercising all their rights and obligations under the transaction documents. This document cannot be reproduced except in full, without prior written approval of the Company. Any unauthorized alteration, forgery or falsification of the content or appearance of this document is unlawful and offenders may be prosecuted to the fullest extent of the law.

## Mode\_2\_L

Site : Conduction Room      Phase: **L1**      Temperature: 20 °C  
 Limit: FCC Part 18 Conduction(QP)      Power: AC 120V/60Hz      Humidity: 51 %  
 Mode: Mode 2  
 Note:

### Conducted Emission



No.	Mk.	Freq.	Reading Level	Correct Factor	Measurement	Limit	Over	Detector	Comment
		MHz	dBuV	dB	dBuV	dBuV	dB		
1		0.1580	36.80	0.04	36.84	65.57	-28.73	QP	
2		0.1580	29.50	0.04	29.54	55.57	-26.03	AVG	
3		1.8660	28.80	0.22	29.02	56.00	-26.98	QP	
4		1.8660	23.60	0.22	23.82	46.00	-22.18	AVG	
5		2.1300	29.50	0.25	29.75	56.00	-26.25	QP	
6		2.1300	24.40	0.25	24.65	46.00	-21.35	AVG	
7		2.4460	28.50	0.27	28.77	56.00	-27.23	QP	
8		2.4460	23.40	0.27	23.67	46.00	-22.33	AVG	
9		3.7060	31.50	0.36	31.86	56.00	-24.14	QP	
10		3.7060	26.30	0.36	26.66	46.00	-19.34	AVG	
11		10.8940	39.60	0.72	40.32	60.00	-19.68	QP	
12	*	10.8940	34.30	0.72	35.02	50.00	-14.98	AVG	

\*:Maximum data    x:Over limit    !:over margin

File :70205\Data :#3

Page: 1

Unless otherwise stated the results shown in this test report refer only to the sample(s) tested and such sample(s) are retained for 90 days only.

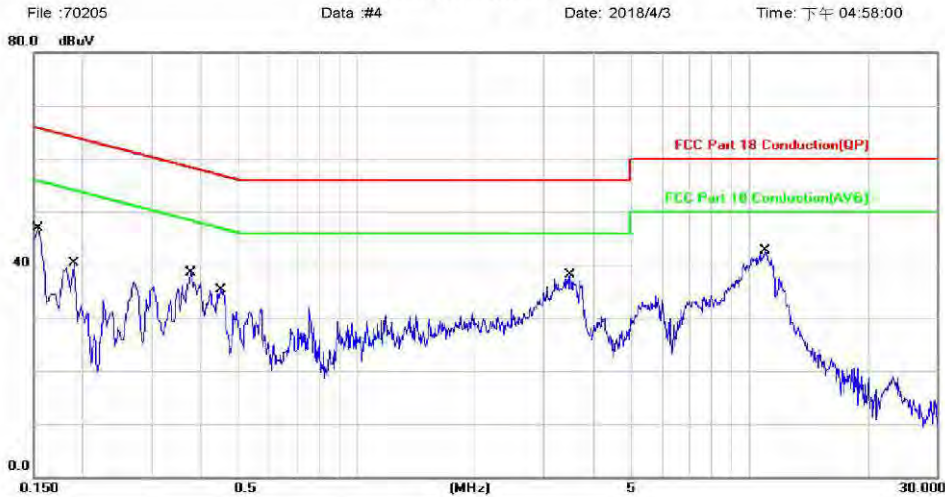
除非另有說明，此報告結果僅對測試之樣品負責，同時此樣品僅保留90天。本報告未經本公司書面許可，不可部份複製。

This document is issued by the Company subject to its General Conditions of Service printed overleaf, available on request or accessible at [www.sgs.com/terms\\_and\\_conditions.htm](http://www.sgs.com/terms_and_conditions.htm) and for electronic format documents, subject to Terms and Conditions for Electronic Documents at [www.sgs.com/terms\\_e-document.htm](http://www.sgs.com/terms_e-document.htm). Attention is drawn to the limitation of liability, indemnification and jurisdiction issues defined therein. Any holder of this document is advised that information contained hereon reflects the Company's findings at the time of its intervention only and within the limits of Client's instructions, if any. The Company's sole responsibility is to its Client and this document does not exonerate parties to a transaction from exercising all their rights and obligations under the transaction documents. This document cannot be reproduced except in full, without prior written approval of the Company. Any unauthorized alteration, forgery or falsification of the content or appearance of this document is unlawful and offenders may be prosecuted to the fullest extent of the law.

## Mode\_2\_N

Site : Conduction Room      Phase: **N**      Temperature: 20 °C  
 Limit: FCC Part 18 Conduction(QP)      Power: AC 120V/60Hz      Humidity: 51 %  
 Mode: Mode 2  
 Note:

### Conducted Emission



No.	Mk.	Freq.	Reading Level	Correct Factor	Measurement	Limit	Over	Detector	Comment
		MHz	dBuV	dB	dBuV	dBuV	dB		
1		0.1540	44.40	0.12	44.52	65.78	-21.26	QP	
2 *		0.1540	42.00	0.12	42.12	55.78	-13.66	AVG	
3		0.1900	37.70	0.11	37.81	64.04	-26.23	QP	
4		0.1900	29.40	0.11	29.51	54.04	-24.53	AVG	
5		0.3780	38.00	0.12	38.12	58.32	-20.20	QP	
6		0.3780	33.10	0.12	33.22	48.32	-15.10	AVG	
7		0.4500	31.30	0.12	31.42	56.88	-25.46	QP	
8		0.4500	27.10	0.12	27.22	46.88	-19.66	AVG	
9		3.5020	33.70	0.27	33.97	56.00	-22.03	QP	
10		3.5020	28.70	0.27	28.97	46.00	-17.03	AVG	
11		10.9940	38.00	0.50	38.50	60.00	-21.50	QP	
12		10.9940	32.70	0.50	33.20	50.00	-16.80	AVG	

\*:Maximum data    x:Over limit    !:over margin

File :70205\Data :#4

Page: 1

Unless otherwise stated the results shown in this test report refer only to the sample(s) tested and such sample(s) are retained for 90 days only.

除非另有說明，此報告結果僅對測試之樣品負責，同時此樣品僅保留90天。本報告未經本公司書面許可，不可部份複製。

This document is issued by the Company subject to its General Conditions of Service printed overleaf, available on request or accessible at [www.sgs.com/terms\\_and\\_conditions.htm](http://www.sgs.com/terms_and_conditions.htm) and for electronic format documents, subject to Terms and Conditions for Electronic Documents at [www.sgs.com/terms\\_e-document.htm](http://www.sgs.com/terms_e-document.htm). Attention is drawn to the limitation of liability, indemnification and jurisdiction issues defined therein. Any holder of this document is advised that information contained hereon reflects the Company's findings at the time of its intervention only and within the limits of Client's instructions, if any. The Company's sole responsibility is to its Client and this document does not exonerate parties to a transaction from exercising all their rights and obligations under the transaction documents. This document cannot be reproduced except in full, without prior written approval of the Company. Any unauthorized alteration, forgery or falsification of the content or appearance of this document is unlawful and offenders may be prosecuted to the fullest extent of the law.



## Mode\_3\_L

Site : Conduction Room      Phase: **L1**      Temperature: 20 °C  
 Limit: FCC Part 18 Conduction(QP)      Power: AC 120V/60Hz      Humidity: 51 %  
 Mode: Mode 3  
 Note:

### Conducted Emission



No.	Mk.	Freq.	Reading Level	Correct Factor	Measurement	Limit	Over	Detector	Comment
		MHz	dBuV	dB	dBuV	dBuV	dB		
1		0.1540	42.50	0.04	42.54	65.78	-23.24	QP	
2		0.1540	37.10	0.04	37.14	55.78	-18.64	AVG	
3		0.1860	33.30	0.03	33.33	64.21	-30.88	QP	
4		0.1860	21.10	0.03	21.13	54.21	-33.08	AVG	
5		0.4140	29.10	0.04	29.14	57.57	-28.43	QP	
6		0.4140	22.40	0.04	22.44	47.57	-25.13	AVG	
7		2.2900	29.60	0.26	29.86	56.00	-26.14	QP	
8		2.2900	24.40	0.26	24.66	46.00	-21.34	AVG	
9		3.5060	33.40	0.35	33.75	56.00	-22.25	QP	
10		3.5060	28.20	0.35	28.55	46.00	-17.45	AVG	
11		10.6980	39.30	0.72	40.02	60.00	-19.98	QP	
12	*	10.6980	33.90	0.72	34.62	50.00	-15.38	AVG	

\*:Maximum data    x:Over limit    !:over margin

File :70205\Data :#6

Page: 1

Unless otherwise stated the results shown in this test report refer only to the sample(s) tested and such sample(s) are retained for 90 days only.

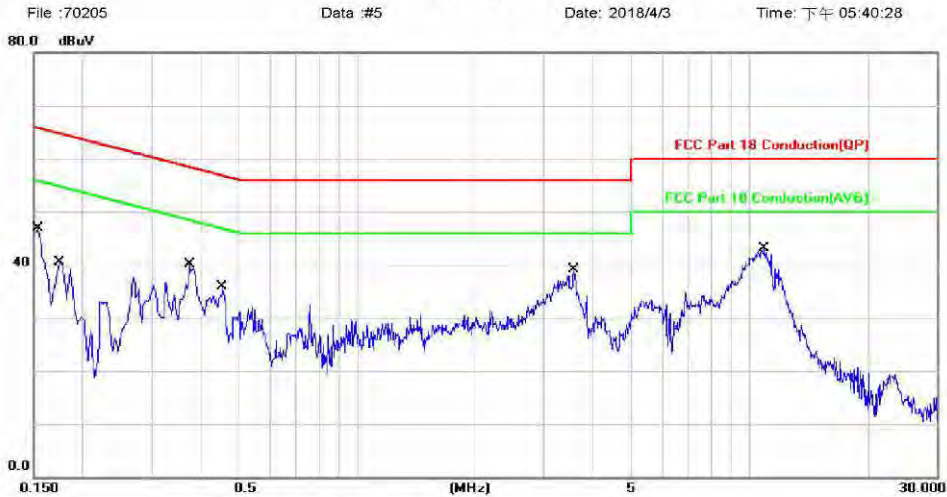
除非另有說明，此報告結果僅對測試之樣品負責，同時此樣品僅保留90天。本報告未經本公司書面許可，不可部份複製。

This document is issued by the Company subject to its General Conditions of Service printed overleaf, available on request or accessible at [www.sgs.com/terms\\_and\\_conditions.htm](http://www.sgs.com/terms_and_conditions.htm) and for electronic format documents, subject to Terms and Conditions for Electronic Documents at [www.sgs.com/terms\\_e-document.htm](http://www.sgs.com/terms_e-document.htm). Attention is drawn to the limitation of liability, indemnification and jurisdiction issues defined therein. Any holder of this document is advised that information contained hereon reflects the Company's findings at the time of its intervention only and within the limits of Client's instructions, if any. The Company's sole responsibility is to its Client and this document does not exonerate parties to a transaction from exercising all their rights and obligations under the transaction documents. This document cannot be reproduced except in full, without prior written approval of the Company. Any unauthorized alteration, forgery or falsification of the content or appearance of this document is unlawful and offenders may be prosecuted to the fullest extent of the law.

## Mode\_3\_N

Site : Conduction Room Phase: **N** Temperature: 20 °C  
 Limit: FCC Part 18 Conduction(QP) Power: AC 120V/60Hz Humidity: 51 %  
 Mode: Mode 3  
 Note:

### Conducted Emission



No.	Mk.	Freq.	Reading Level	Correct Factor	Measurement	Limit	Over	Detector	Comment
		MHz	dBuV	dB	dBuV	dBuV	dB		
1		0.1540	44.30	0.12	44.42	65.78	-21.36	QP	
2 *		0.1540	42.10	0.12	42.22	55.78	-13.56	AVG	
3		0.1740	33.20	0.12	33.32	64.77	-31.45	QP	
4		0.1740	19.30	0.12	19.42	54.77	-35.35	AVG	
5		0.3740	35.00	0.12	35.12	58.41	-23.29	QP	
6		0.3740	31.00	0.12	31.12	48.41	-17.29	AVG	
7		0.4540	33.50	0.12	33.62	56.80	-23.18	QP	
8		0.4540	28.50	0.12	28.62	46.80	-18.18	AVG	
9		3.5780	32.90	0.27	33.17	56.00	-22.83	QP	
10		3.5780	28.10	0.27	28.37	46.00	-17.63	AVG	
11		10.9580	38.20	0.50	38.70	60.00	-21.30	QP	
12		10.9580	32.80	0.50	33.30	50.00	-16.70	AVG	

\*:Maximum data x:Over limit l:over margin

File :70205\Data :#5

Page: 1

Unless otherwise stated the results shown in this test report refer only to the sample(s) tested and such sample(s) are retained for 90 days only.

除非另有說明，此報告結果僅對測試之樣品負責，同時此樣品僅保留90天。本報告未經本公司書面許可，不可部份複製。

This document is issued by the Company subject to its General Conditions of Service printed overleaf, available on request or accessible at [www.sgs.com/terms\\_and\\_conditions.htm](http://www.sgs.com/terms_and_conditions.htm) and for electronic format documents, subject to Terms and Conditions for Electronic Documents at [www.sgs.com/terms\\_e-document.htm](http://www.sgs.com/terms_e-document.htm). Attention is drawn to the limitation of liability, indemnification and jurisdiction issues defined therein. Any holder of this document is advised that information contained hereon reflects the Company's findings at the time of its intervention only and within the limits of Client's instructions, if any. The Company's sole responsibility is to its Client and this document does not exonerate parties to a transaction from exercising all their rights and obligations under the transaction documents. This document cannot be reproduced except in full, without prior written approval of the Company. Any unauthorized alteration, forgery or falsification of the content or appearance of this document is unlawful and offenders may be prosecuted to the fullest extent of the law.

## 2.5 Test of Radiated Emission

### 2.5.1 Test Instruments

SGS Radiated_Below_1GHz HWAYA 966B EMC					
EQUIPMENT TYPE	Manufacturer	Model Number	Serial Number	Calibration Date	Calibration Due
EMI Test Receiver	R&S	ESR 7	101507	2017/5/27	2018/5/26
Biconical Antenna	TESEQ	CBL 6112D	35241	2017/12/20	2018/12/19
Biconical Antenna	SCHWARZBECK	VHBB 9124	9124-560	2017/12/25	2018/12/24
Pre Amplifier	EMC Instruments Corp.	EMC330H	980215	2017/9/30	2018/9/29
Coaxial Cable	EMC Instruments	EMC8D-NM-NM	140919	2017/9/30	2018/9/29
Coaxial Cable	EMC Instruments	EMC8D-NM-NM	140921	2017/9/30	2018/9/29
DC LISN	SCHWARZBECK	NNBM 8124	8124-564	2017/12/6	2018/12/5
DC LISN	SCHWARZBECK	NNBM 8124	8124-565	2017/12/6	2018/12/5
Communication Tester	R&S	CMU200	119988	2018/2/22	2019/2/21
Communication Tester	R&S	CMW500	152303	2018/2/21	2019/2/20
Communication Tester	Anritsu	MT8820C	6201465315	2017/12/10	2018/12/9
Controller	MF	MF-7802	N/A	N.C.R.	N.C.R.
Antenna Master	MF	N/A	N/A	N.C.R.	N.C.R.
Turn Table	MF	N/A	N/A	N.C.R.	N.C.R.
Site NSA	SGS	966 Chamber B	SAC-B	2017/10/8	2018/10/7
Test S/W	Farad	EZ-EMC	6201107337	N.C.R.	N.C.R.
Loop Antenna	COM-POWER	AL-130	121060	2017/5/15	2018/5/14

SGS Taiwan LTD. Electronics & Communication Laboratory  
No.2, Keji 1st Rd., Guishan Dist., Taoyuan City 333, Taiwan (R.O.C.)  
Measurement Uncertainty of Radiated Emission  
Expanded uncertainty Ulab (k=2) of radiated emission measurement is 4.59 dB. (30-1000MHz)  
Theory values uncertainty Ucispr 16-4-2:2011+A1:2014 (K=2) of radiated emission is 5.24 dB. (30MHz ~ 1000MHz)

### 2.5.2 Operating Environment

Temperature : 23 degree C

Humidity : 68 %RH

Atmospheric Pressure : 1002 hpa

Unless otherwise stated the results shown in this test report refer only to the sample(s) tested and such sample(s) are retained for 90 days only.

除非另有說明，此報告結果僅對測試之樣品負責，同時此樣品僅保留90天。本報告未經本公司書面許可，不可部份複製。

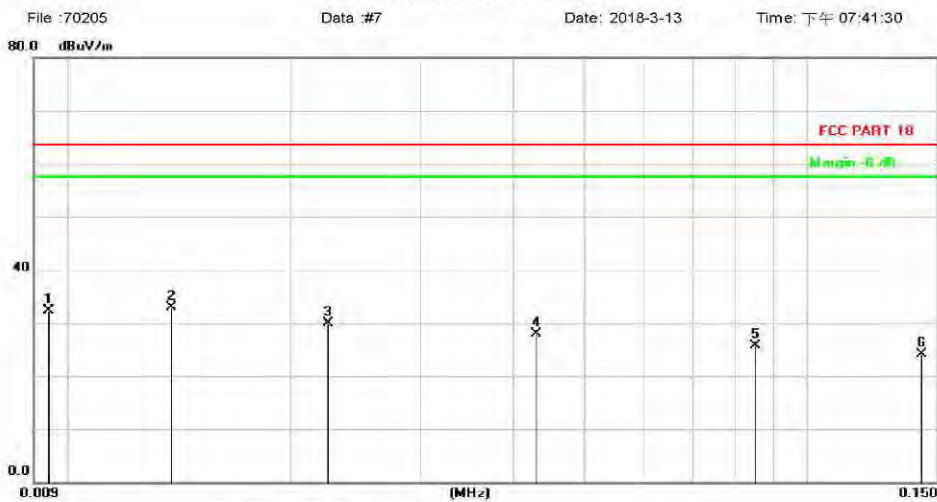
This document is issued by the Company subject to its General Conditions of Service printed overleaf, available on request or accessible at [www.sgs.com/terms\\_and\\_conditions.htm](http://www.sgs.com/terms_and_conditions.htm) and for electronic format documents, subject to Terms and Conditions for Electronic Documents at [www.sgs.com/terms\\_e-document.htm](http://www.sgs.com/terms_e-document.htm). Attention is drawn to the limitation of liability, indemnification and jurisdiction issues defined therein. Any holder of this document is advised that information contained hereon reflects the Company's findings at the time of its intervention only and within the limits of Client's instructions, if any. The Company's sole responsibility is to its Client and this document does not exonerate parties to a transaction from exercising all their rights and obligations under the transaction documents. This document cannot be reproduced except in full, without prior written approval of the Company. Any unauthorized alteration, forgery or falsification of the content or appearance of this document is unlawful and offenders may be prosecuted to the fullest extent of the law.

### 2.5.3 Measurement Data

#### Model No.:Joya Touch Single Slot Dock Charge Only Mode\_1\_H

Site: SGS 966 Chamber B	Polarization: <b>Horizontal</b>	Temperature: 23 °C
Limit: FCC PART 18	Power: AC 120V/60Hz	Humidity: 68 %
Mode: Mode_1	Distance:	
Note:		

#### Radiated Emission



No.	Mk.	Freq.	Reading Level	Correct Factor	Measurement	Limit	Over	Detector	Comment
		MHz	dBuV	dB/m	dBuV/m	dBuV/m	dB		
1		0.0094	12.79	19.52	32.31	63.50	-31.19	QP	
2	*	0.0138	14.56	18.37	32.93	63.50	-30.57	QP	
3		0.0225	13.83	16.02	29.85	63.50	-33.65	QP	
4		0.0430	15.08	12.78	27.86	63.50	-35.64	QP	
5		0.0851	14.03	11.71	25.74	63.50	-37.76	QP	
6		0.1426	12.72	11.46	24.18	63.50	-39.32	QP	

\*:Maximum data    x:Over limit    l:over margin

File :70205\Data :#7

Page: 1

Unless otherwise stated the results shown in this test report refer only to the sample(s) tested and such sample(s) are retained for 90 days only.

除非另有說明，此報告結果僅對測試之樣品負責，同時此樣品僅保留90天。本報告未經本公司書面許可，不可部份複製。

This document is issued by the Company subject to its General Conditions of Service printed overleaf, available on request or accessible at [www.sgs.com/terms\\_and\\_conditions.htm](http://www.sgs.com/terms_and_conditions.htm) and for electronic format documents, subject to Terms and Conditions for Electronic Documents at [www.sgs.com/terms\\_e-document.htm](http://www.sgs.com/terms_e-document.htm). Attention is drawn to the limitation of liability, indemnification and jurisdiction issues defined therein. Any holder of this document is advised that information contained hereon reflects the Company's findings at the time of its intervention only and within the limits of Client's instructions, if any. The Company's sole responsibility is to its Client and this document does not exonerate parties to a transaction from exercising all their rights and obligations under the transaction documents. This document cannot be reproduced except in full, without prior written approval of the Company. Any unauthorized alteration, forgery or falsification of the content or appearance of this document is unlawful and offenders may be prosecuted to the fullest extent of the law.

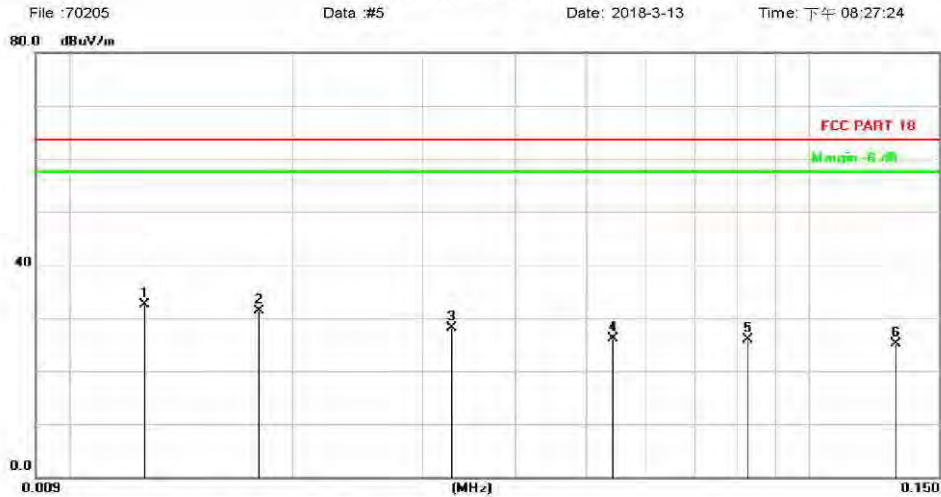


## Mode\_1\_V

Site: SGS 966 Chamber B  
Limit: FCC PART 18  
Mode: Mode\_1  
Note:

Polarization: **Vertical**  
Power: AC 120V/60Hz  
Distance:  
Temperature: 23 °C  
Humidity: 68 %

### Radiated Emission



No.	Mk.	Freq.	Reading Level	Correct Factor	Measurement	Limit	Over	Detector	Comment
		MHz	dBuV	dB/m	dBuV/m	dBuV/m	dB		
1	*	0.0126	13.84	18.70	32.54	63.50	-30.96	QP	
2		0.0180	14.15	17.24	31.39	63.50	-32.11	QP	
3		0.0328	14.32	13.73	28.05	63.50	-35.45	QP	
4		0.0542	13.96	12.11	26.07	63.50	-37.43	QP	
5		0.0824	14.22	11.75	25.97	63.50	-37.53	QP	
6		0.1314	13.63	11.47	25.10	63.50	-38.40	QP	

\*:Maximum data    x:Over limit    !:over margin

File :70205\Data #5

Page: 1

Unless otherwise stated the results shown in this test report refer only to the sample(s) tested and such sample(s) are retained for 90 days only.

除非另有說明，此報告結果僅對測試之樣品負責，同時此樣品僅保留90天。本報告未經本公司書面許可，不可部份複製。

This document is issued by the Company subject to its General Conditions of Service printed overleaf, available on request or accessible at [www.sgs.com/terms\\_and\\_conditions.htm](http://www.sgs.com/terms_and_conditions.htm) and for electronic format documents, subject to Terms and Conditions for Electronic Documents at [www.sgs.com/terms\\_e-document.htm](http://www.sgs.com/terms_e-document.htm). Attention is drawn to the limitation of liability, indemnification and jurisdiction issues defined therein. Any holder of this document is advised that information contained hereon reflects the Company's findings at the time of its intervention only and within the limits of Client's instructions, if any. The Company's sole responsibility is to its Client and this document does not exonerate parties to a transaction from exercising all their rights and obligations under the transaction documents. This document cannot be reproduced except in full, without prior written approval of the Company. Any unauthorized alteration, forgery or falsification of the content or appearance of this document is unlawful and offenders may be prosecuted to the fullest extent of the law.



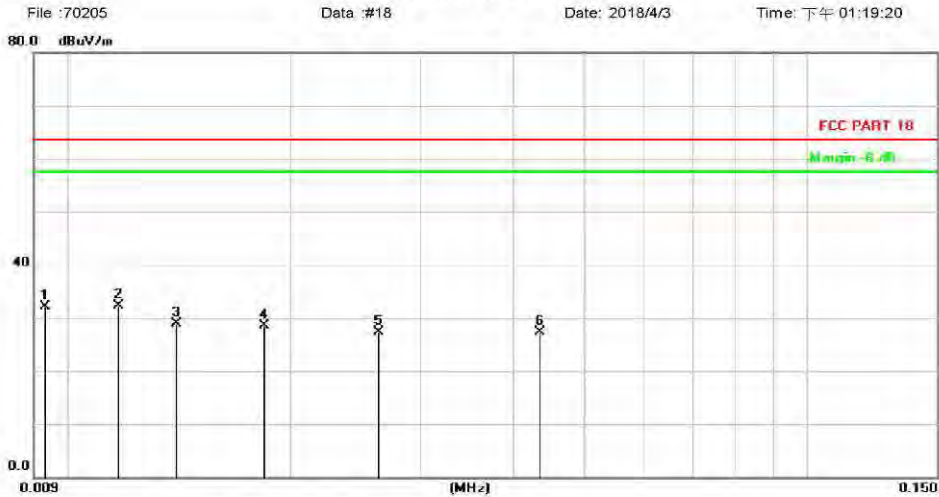
### Mode\_2\_H

Site: SGS 966 Chamber B  
 Limit: FCC PART 18  
 Mode: Mode\_2  
 Note:

Polarization: **Horizontal**  
 Power: AC 120V/60Hz  
 Distance:

Temperature: 22 °C  
 Humidity: 66 %

#### Radiated Emission



No.	Mk.	Freq.	Reading Level	Correct Factor	Measurement	Limit	Over	Detector	Comment
		MHz	dBuV	dB/m	dBuV/m	dBuV/m	dB		
1		0.0093	12.59	19.54	32.13	63.50	-31.37	QP	
2	*	0.0117	13.40	18.94	32.34	63.50	-31.16	QP	
3		0.0140	10.55	18.32	28.87	63.50	-34.63	QP	
4		0.0184	11.43	17.13	28.56	63.50	-34.94	QP	
5		0.0263	12.35	15.00	27.35	63.50	-36.15	QP	
6		0.0435	14.54	12.74	27.28	63.50	-36.22	QP	

\*:Maximum data    x:Over limit    !:over margin

File :70205\Data :#18

Page: 1

Unless otherwise stated the results shown in this test report refer only to the sample(s) tested and such sample(s) are retained for 90 days only.

除非另有說明，此報告結果僅對測試之樣品負責，同時此樣品僅保留90天。本報告未經本公司書面許可，不可部份複製。

This document is issued by the Company subject to its General Conditions of Service printed overleaf, available on request or accessible at [www.sgs.com/terms\\_and\\_conditions.htm](http://www.sgs.com/terms_and_conditions.htm) and for electronic format documents, subject to Terms and Conditions for Electronic Documents at [www.sgs.com/terms\\_e-document.htm](http://www.sgs.com/terms_e-document.htm). Attention is drawn to the limitation of liability, indemnification and jurisdiction issues defined therein. Any holder of this document is advised that information contained hereon reflects the Company's findings at the time of its intervention only and within the limits of Client's instructions, if any. The Company's sole responsibility is to its Client and this document does not exonerate parties to a transaction from exercising all their rights and obligations under the transaction documents. This document cannot be reproduced except in full, without prior written approval of the Company. Any unauthorized alteration, forgery or falsification of the content or appearance of this document is unlawful and offenders may be prosecuted to the fullest extent of the law.

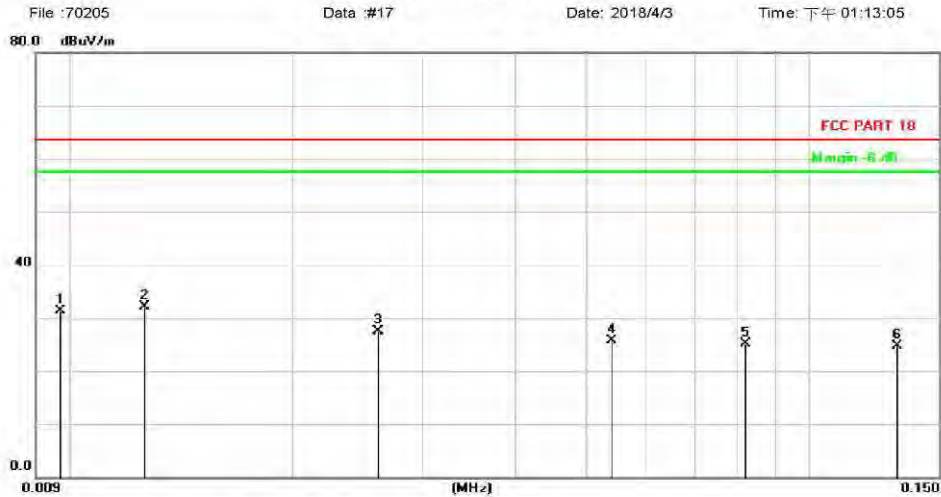
## Mode\_2\_V

Site: SGS 966 Chamber B  
 Limit: FCC PART 18  
 Mode: Mode\_2  
 Note:

Polarization: **Vertical**  
 Power: AC 120V/60Hz  
 Distance:

Temperature: 22 °C  
 Humidity: 66 %

### Radiated Emission



No.	Mk.	Freq.	Reading Level	Correct Factor	Measurement	Limit	Over	Detector	Comment
		MHz	dBuV	dB/m	dBuV/m	dBuV/m	dB		
1		0.0097	11.83	19.46	31.29	63.50	-32.21	QP	
2	*	0.0126	13.46	18.70	32.16	63.50	-31.34	QP	
3		0.0261	12.54	15.05	27.59	63.50	-35.91	QP	
4		0.0541	13.56	12.11	25.67	63.50	-37.83	QP	
5		0.0820	13.41	11.75	25.16	63.50	-38.34	QP	
6		0.1316	13.21	11.47	24.68	63.50	-38.82	QP	

\*:Maximum data    x:Over limit    !:over margin

File :70205\Data :#17

Page: 1

Unless otherwise stated the results shown in this test report refer only to the sample(s) tested and such sample(s) are retained for 90 days only.

除非另有說明，此報告結果僅對測試之樣品負責，同時此樣品僅保留90天。本報告未經本公司書面許可，不可部份複製。

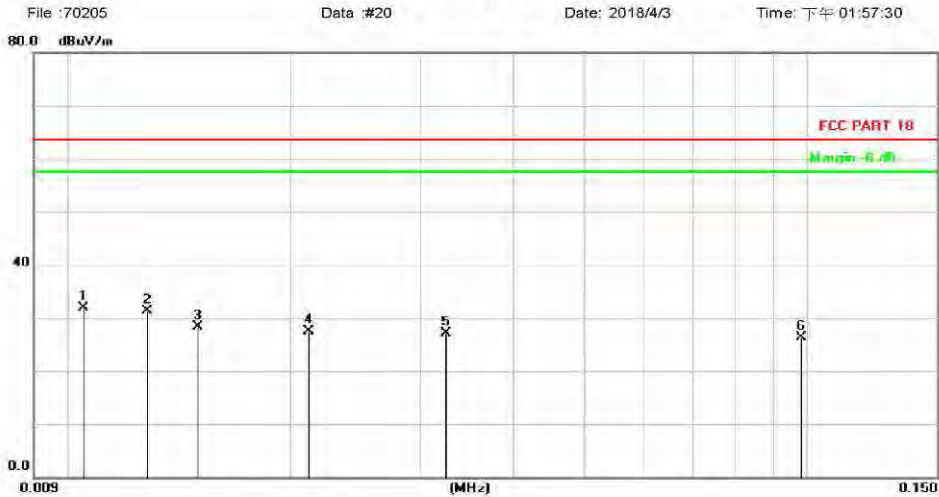
This document is issued by the Company subject to its General Conditions of Service printed overleaf, available on request or accessible at [www.sgs.com/terms\\_and\\_conditions.htm](http://www.sgs.com/terms_and_conditions.htm) and for electronic format documents, subject to Terms and Conditions for Electronic Documents at [www.sgs.com/terms\\_e-document.htm](http://www.sgs.com/terms_e-document.htm). Attention is drawn to the limitation of liability, indemnification and jurisdiction issues defined therein. Any holder of this document is advised that information contained hereon reflects the Company's findings at the time of its intervention only and within the limits of Client's instructions, if any. The Company's sole responsibility is to its Client and this document does not exonerate parties to a transaction from exercising all their rights and obligations under the transaction documents. This document cannot be reproduced except in full, without prior written approval of the Company. Any unauthorized alteration, forgery or falsification of the content or appearance of this document is unlawful and offenders may be prosecuted to the fullest extent of the law.

## Mode\_3\_H

Site: SGS 966 Chamber B  
Limit: FCC PART 18  
Mode: Mode\_3  
Note:

Polarization: **Horizontal**  
Power: AC 120V/60Hz  
Distance:  
Temperature: 22 °C  
Humidity: 66 %

### Radiated Emission



No.	Mk.	Freq.	Reading Level	Correct Factor	Measurement	Limit	Over	Detector	Comment
		MHz	dBuV	dB/m	dBuV/m	dBuV/m	dB		
1	*	0.0105	12.72	19.26	31.98	63.50	-31.52	QP	
2		0.0128	12.62	18.64	31.26	63.50	-32.24	QP	
3		0.0150	10.17	18.05	28.22	63.50	-35.28	QP	
4		0.0212	11.03	16.38	27.41	63.50	-36.09	QP	
5		0.0325	13.26	13.76	27.02	63.50	-36.48	QP	
6		0.0981	14.85	11.53	26.38	63.50	-37.12	QP	

\*:Maximum data    x:Over limit    !:over margin

File :70205\Data :#20

Page: 1

Unless otherwise stated the results shown in this test report refer only to the sample(s) tested and such sample(s) are retained for 90 days only.

除非另有說明，此報告結果僅對測試之樣品負責，同時此樣品僅保留90天。本報告未經本公司書面許可，不可部份複製。

This document is issued by the Company subject to its General Conditions of Service printed overleaf, available on request or accessible at [www.sgs.com/terms\\_and\\_conditions.htm](http://www.sgs.com/terms_and_conditions.htm) and for electronic format documents, subject to Terms and Conditions for Electronic Documents at [www.sgs.com/terms\\_e-document.htm](http://www.sgs.com/terms_e-document.htm). Attention is drawn to the limitation of liability, indemnification and jurisdiction issues defined therein. Any holder of this document is advised that information contained hereon reflects the Company's findings at the time of its intervention only and within the limits of Client's instructions, if any. The Company's sole responsibility is to its Client and this document does not exonerate parties to a transaction from exercising all their rights and obligations under the transaction documents. This document cannot be reproduced except in full, without prior written approval of the Company. Any unauthorized alteration, forgery or falsification of the content or appearance of this document is unlawful and offenders may be prosecuted to the fullest extent of the law.

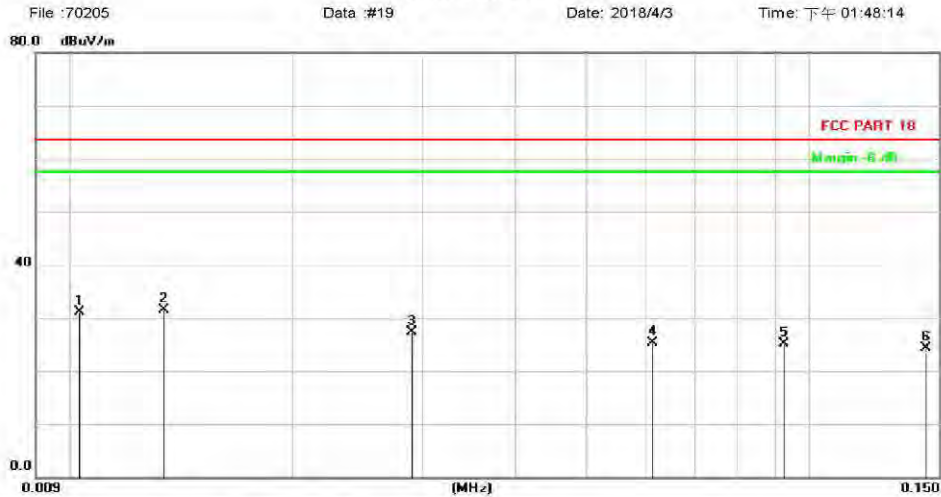
## Mode\_3\_V

Site: SGS 966 Chamber B  
 Limit: FCC PART 18  
 Mode: Mode\_3  
 Note:

Polarization: **Vertical**  
 Power: AC 120V/60Hz  
 Distance:

Temperature: 22 °C  
 Humidity: 66 %

### Radiated Emission



No.	Mk.	Freq.	Reading Level	Correct Factor	Measurement	Limit	Over	Detector	Comment
		MHz	dBuV	dB/m	dBuV/m	dBuV/m	dB		
1		0.0103	11.71	19.32	31.03	63.50	-32.47	QP	
2	*	0.0134	13.04	18.48	31.52	63.50	-31.98	QP	
3		0.0290	12.99	14.27	27.26	63.50	-36.24	QP	
4		0.0614	13.27	12.04	25.31	63.50	-38.19	QP	
5		0.0926	13.41	11.60	25.01	63.50	-38.49	QP	
6		0.1440	12.76	11.46	24.22	63.50	-39.28	QP	

\*:Maximum data    x:Over limit    !:over margin

File :70205\Data #19

Page: 1

Unless otherwise stated the results shown in this test report refer only to the sample(s) tested and such sample(s) are retained for 90 days only.

除非另有說明，此報告結果僅對測試之樣品負責，同時此樣品僅保留90天。本報告未經本公司書面許可，不可部份複製。

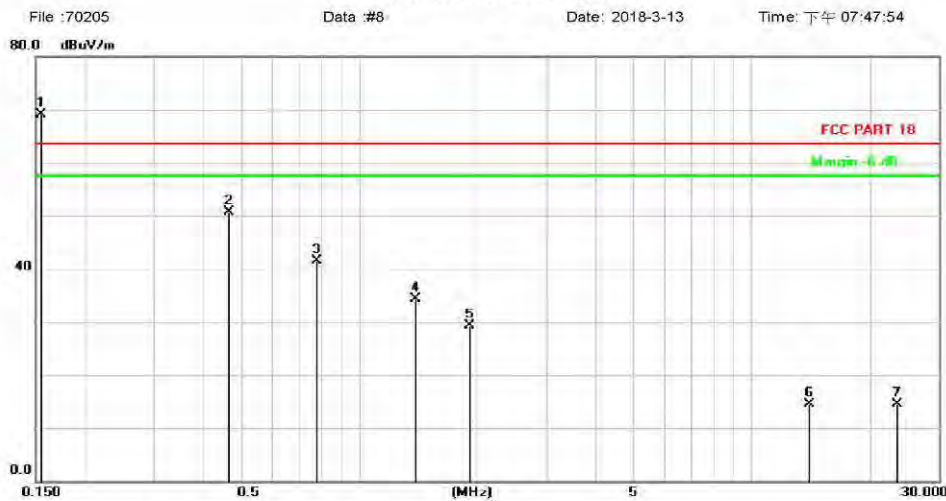
This document is issued by the Company subject to its General Conditions of Service printed overleaf, available on request or accessible at [www.sgs.com/terms\\_and\\_conditions.htm](http://www.sgs.com/terms_and_conditions.htm) and for electronic format documents, subject to Terms and Conditions for Electronic Documents at [www.sgs.com/terms\\_e-document.htm](http://www.sgs.com/terms_e-document.htm). Attention is drawn to the limitation of liability, indemnification and jurisdiction issues defined therein. Any holder of this document is advised that information contained hereon reflects the Company's findings at the time of its intervention only and within the limits of Client's instructions, if any. The Company's sole responsibility is to its Client and this document does not exonerate parties to a transaction from exercising all their rights and obligations under the transaction documents. This document cannot be reproduced except in full, without prior written approval of the Company. Any unauthorized alteration, forgery or falsification of the content or appearance of this document is unlawful and offenders may be prosecuted to the fullest extent of the law.



0.150MHz ~ 30.000MHz  
Mode\_1\_H

Site: SGS 966 Chamber B      Polarization: **Horizontal**      Temperature: 23 °C  
 Limit: FCC PART 18      Power: AC 120V/60Hz      Humidity: 68 %  
 Mode: Mode\_1      Distance:  
 Note:

Radiated Emission



No.	Mk.	Freq.	Reading Level	Correct Factor	Measurement	Limit	Over	Detector	Comment
		MHz	dBuV	dB/m	dBuV/m	dBuV/m	dB		
1	*	0.1548	57.70	11.45	69.15	63.50	5.65	QP	TX
2		0.4661	39.50	11.22	50.72	63.50	-12.78	QP	
3		0.7752	30.24	11.31	41.55	63.50	-21.95	QP	
4		1.3958	23.06	11.26	34.32	63.50	-29.18	QP	
5		1.8980	18.14	11.09	29.23	63.50	-34.27	QP	
6		13.9886	3.07	11.38	14.45	63.50	-49.05	QP	
7		23.3870	3.71	10.72	14.43	63.50	-49.07	QP	

\*:Maximum data    x:Over limit    !:over margin

File :70205\Data :#8

Page: 1

Unless otherwise stated the results shown in this test report refer only to the sample(s) tested and such sample(s) are retained for 90 days only.

除非另有說明，此報告結果僅對測試之樣品負責，同時此樣品僅保留90天。本報告未經本公司書面許可，不可部份複製。

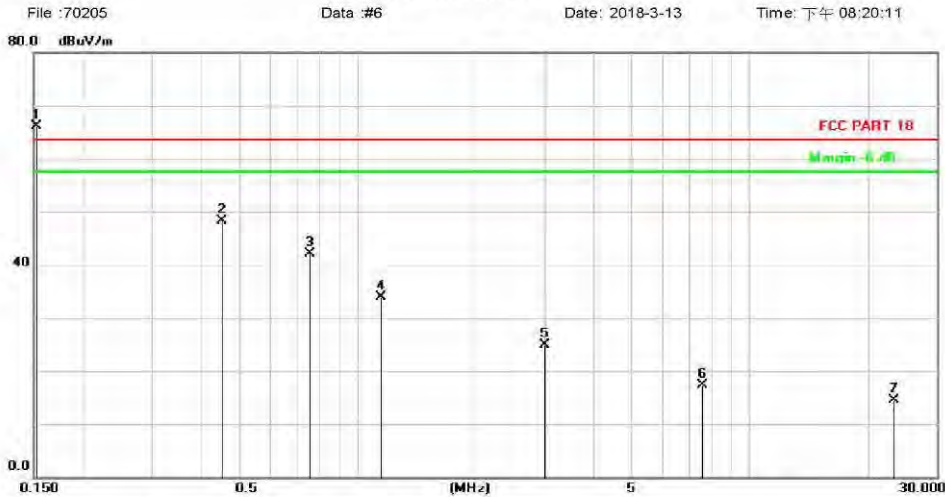
This document is issued by the Company subject to its General Conditions of Service printed overleaf, available on request or accessible at [www.sgs.com/terms\\_and\\_conditions.htm](http://www.sgs.com/terms_and_conditions.htm) and for electronic format documents, subject to Terms and Conditions for Electronic Documents at [www.sgs.com/terms\\_e-document.htm](http://www.sgs.com/terms_e-document.htm). Attention is drawn to the limitation of liability, indemnification and jurisdiction issues defined therein. Any holder of this document is advised that information contained hereon reflects the Company's findings at the time of its intervention only and within the limits of Client's instructions, if any. The Company's sole responsibility is to its Client and this document does not exonerate parties to a transaction from exercising all their rights and obligations under the transaction documents. This document cannot be reproduced except in full, without prior written approval of the Company. Any unauthorized alteration, forgery or falsification of the content or appearance of this document is unlawful and offenders may be prosecuted to the fullest extent of the law.

## Mode\_1\_V

Site: SGS 966 Chamber B  
Limit: FCC PART 18  
Mode: Mode\_1  
Note:

Polarization: **Vertical**  
Power: AC 120V/60Hz  
Distance:  
Temperature: 23 °C  
Humidity: 68 %

### Radiated Emission



No.	Mk.	Freq.	Reading Level	Correct Factor	Measurement	Limit	Over	Detector	Comment
		MHz	dBuV	dB/m	dBuV/m	dBuV/m	dB		
1 *		0.1516	54.73	11.45	66.18	63.50	2.68	QP	TX
2		0.4516	37.05	11.22	48.27	63.50	-15.23	QP	
3		0.7550	30.88	11.30	42.18	63.50	-21.32	QP	
4		1.1473	22.46	11.35	33.81	63.50	-29.69	QP	
5		2.9935	14.13	10.75	24.88	63.50	-38.62	QP	
6		7.5658	6.08	11.20	17.28	63.50	-46.22	QP	
7		23.1404	3.76	10.78	14.54	63.50	-48.96	QP	

\*:Maximum data    x:Over limit    !:over margin

File :70205\Data :#6

Page: 1

Unless otherwise stated the results shown in this test report refer only to the sample(s) tested and such sample(s) are retained for 90 days only.

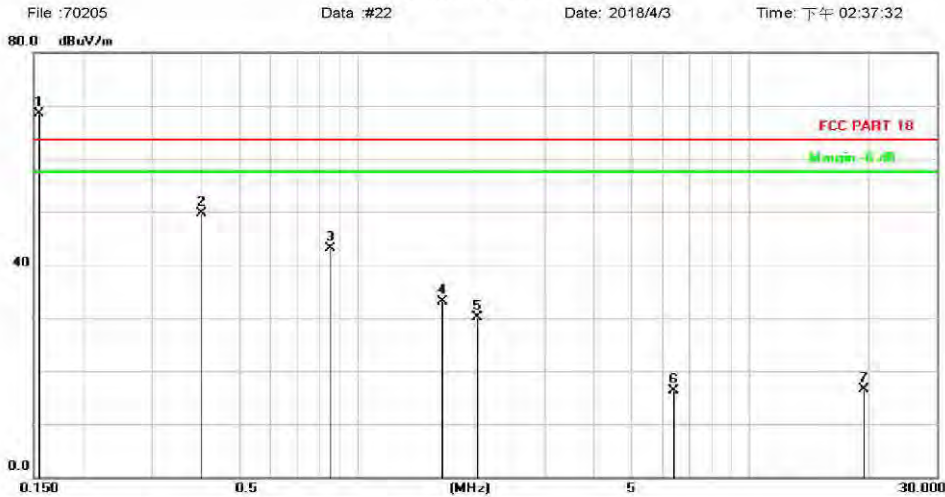
除非另有說明，此報告結果僅對測試之樣品負責，同時此樣品僅保留90天。本報告未經本公司書面許可，不可部份複製。

This document is issued by the Company subject to its General Conditions of Service printed overleaf, available on request or accessible at [www.sgs.com/terms\\_and\\_conditions.htm](http://www.sgs.com/terms_and_conditions.htm) and for electronic format documents, subject to Terms and Conditions for Electronic Documents at [www.sgs.com/terms\\_e-document.htm](http://www.sgs.com/terms_e-document.htm). Attention is drawn to the limitation of liability, indemnification and jurisdiction issues defined therein. Any holder of this document is advised that information contained hereon reflects the Company's findings at the time of its intervention only and within the limits of Client's instructions, if any. The Company's sole responsibility is to its Client and this document does not exonerate parties to a transaction from exercising all their rights and obligations under the transaction documents. This document cannot be reproduced except in full, without prior written approval of the Company. Any unauthorized alteration, forgery or falsification of the content or appearance of this document is unlawful and offenders may be prosecuted to the fullest extent of the law.

## Mode\_2\_H

Site: SGS 966 Chamber B      Polarization: **Horizontal**      Temperature: 22 °C  
 Limit: FCC PART 18      Power: AC 120V/60Hz      Humidity: 66 %  
 Mode: Mode\_2      Distance:  
 Note:

### Radiated Emission



No.	Mk.	Freq.	Reading Level	Correct Factor	Measurement	Limit	Over	Detector	Comment
		MHz	dBuV	dB/m	dBuV/m	dBuV/m	dB		
1	*	0.1546	57.08	11.45	68.53	63.50	5.03	QP	TX
2		0.4017	38.43	11.25	49.68	63.50	-13.82	QP	
3		0.8570	31.82	11.34	43.16	63.50	-20.34	QP	
4		1.6532	21.99	11.17	33.16	63.50	-30.34	QP	
5		2.0224	19.16	11.04	30.20	63.50	-33.30	QP	
6		6.4198	5.07	11.16	16.23	63.50	-47.27	QP	
7		19.5316	4.92	11.50	16.42	63.50	-47.08	QP	

\*:Maximum data    x:Over limit    !:over margin

File :70205\Data :#22

Page: 1

Unless otherwise stated the results shown in this test report refer only to the sample(s) tested and such sample(s) are retained for 90 days only.

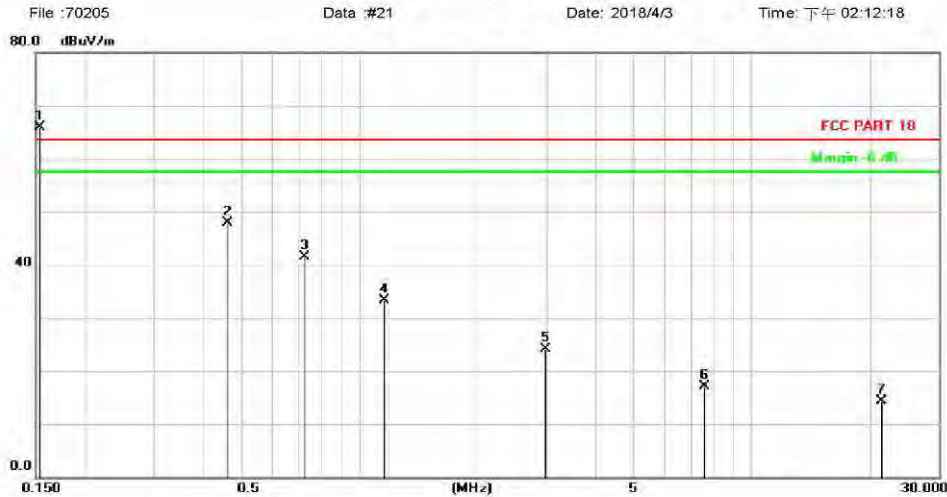
除非另有說明，此報告結果僅對測試之樣品負責，同時此樣品僅保留90天。本報告未經本公司書面許可，不可部份複製。

This document is issued by the Company subject to its General Conditions of Service printed overleaf, available on request or accessible at [www.sgs.com/terms\\_and\\_conditions.htm](http://www.sgs.com/terms_and_conditions.htm) and for electronic format documents, subject to Terms and Conditions for Electronic Documents at [www.sgs.com/terms\\_e-document.htm](http://www.sgs.com/terms_e-document.htm). Attention is drawn to the limitation of liability, indemnification and jurisdiction issues defined therein. Any holder of this document is advised that information contained hereon reflects the Company's findings at the time of its intervention only and within the limits of Client's instructions, if any. The Company's sole responsibility is to its Client and this document does not exonerate parties to a transaction from exercising all their rights and obligations under the transaction documents. This document cannot be reproduced except in full, without prior written approval of the Company. Any unauthorized alteration, forgery or falsification of the content or appearance of this document is unlawful and offenders may be prosecuted to the fullest extent of the law.

## Mode\_2\_V

Site: SGS 966 Chamber B      Polarization: **Vertical**      Temperature: 22 °C  
 Limit: FCC PART 18      Power: AC 120V/60Hz      Humidity: 66 %  
 Mode: Mode\_2      Distance:  
 Note:

### Radiated Emission



No.	Mk.	Freq.	Reading Level	Correct Factor	Measurement	Limit	Over	Detector	Comment
		MHz	dBuV	dB/m	dBuV/m	dBuV/m	dB		
1	*	0.1540	54.44	11.45	65.89	63.50	2.39	QP	TX
2		0.4613	36.67	11.22	47.89	63.50	-15.61	QP	
3		0.7240	30.28	11.29	41.57	63.50	-21.93	QP	
4		1.1580	22.00	11.34	33.34	63.50	-30.16	QP	
5		2.9934	13.45	10.75	24.20	63.50	-39.30	QP	
6		7.5741	5.83	11.20	17.03	63.50	-46.47	QP	
7		21.3720	3.03	11.18	14.21	63.50	-49.29	QP	

\*:Maximum data    x:Over limit    !:over margin

File :70205\Data :#21

Page: 1

Unless otherwise stated the results shown in this test report refer only to the sample(s) tested and such sample(s) are retained for 90 days only.

除非另有說明，此報告結果僅對測試之樣品負責，同時此樣品僅保留90天。本報告未經本公司書面許可，不可部份複製。

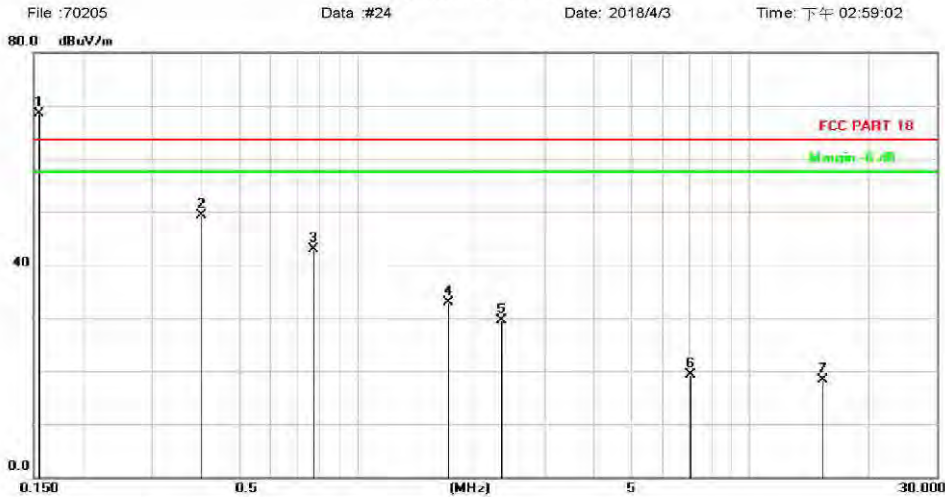
This document is issued by the Company subject to its General Conditions of Service printed overleaf, available on request or accessible at [www.sgs.com/terms\\_and\\_conditions.htm](http://www.sgs.com/terms_and_conditions.htm) and for electronic format documents, subject to Terms and Conditions for Electronic Documents at [www.sgs.com/terms\\_e-document.htm](http://www.sgs.com/terms_e-document.htm). Attention is drawn to the limitation of liability, indemnification and jurisdiction issues defined therein. Any holder of this document is advised that information contained hereon reflects the Company's findings at the time of its intervention only and within the limits of Client's instructions, if any. The Company's sole responsibility is to its Client and this document does not exonerate parties to a transaction from exercising all their rights and obligations under the transaction documents. This document cannot be reproduced except in full, without prior written approval of the Company. Any unauthorized alteration, forgery or falsification of the content or appearance of this document is unlawful and offenders may be prosecuted to the fullest extent of the law.



## Mode\_3\_H

Site: SGS 966 Chamber B      Polarization: **Horizontal**      Temperature: 22 °C  
 Limit: FCC PART 18      Power: AC 120V/60Hz      Humidity: 66 %  
 Mode: Mode\_3      Distance:  
 Note:

### Radiated Emission



No.	Mk.	Freq.	Reading Level	Correct Factor	Measurement	Limit	Over	Detector	Comment
		MHz	dBuV	dB/m	dBuV/m	dBuV/m	dB		
1	*	0.1548	56.96	11.45	68.41	63.50	4.91	QP	TX
2		0.4017	37.99	11.25	49.24	63.50	-14.26	QP	
3		0.7751	31.61	11.31	42.92	63.50	-20.58	QP	
4		1.7071	21.84	11.15	32.99	63.50	-30.51	QP	
5		2.3334	18.58	10.95	29.53	63.50	-33.97	QP	
6		7.0621	8.07	11.18	19.25	63.50	-44.25	QP	
7		15.3880	7.00	11.40	18.40	63.50	-45.10	QP	

\*:Maximum data    x:Over limit    !:over margin

File :70205\Data :#24

Page: 1

Unless otherwise stated the results shown in this test report refer only to the sample(s) tested and such sample(s) are retained for 90 days only.

除非另有說明，此報告結果僅對測試之樣品負責，同時此樣品僅保留90天。本報告未經本公司書面許可，不可部份複製。

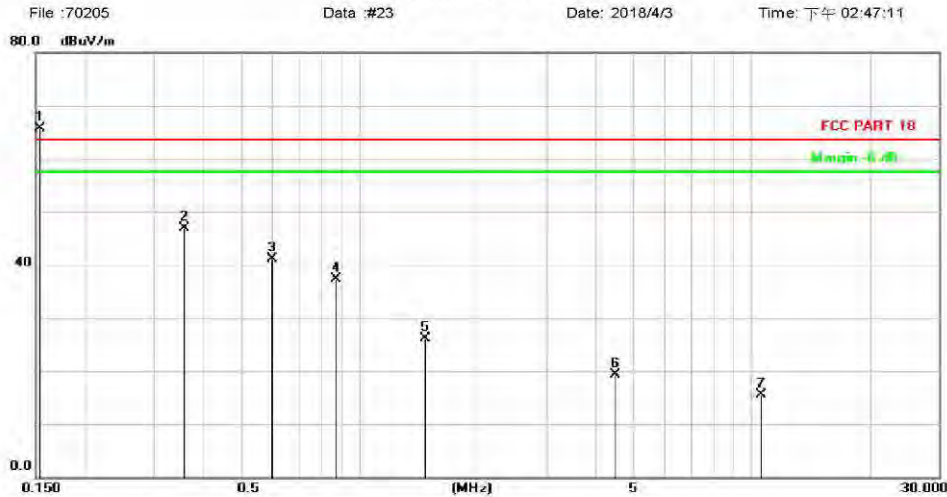
This document is issued by the Company subject to its General Conditions of Service printed overleaf, available on request or accessible at [www.sgs.com/terms\\_and\\_conditions.htm](http://www.sgs.com/terms_and_conditions.htm) and for electronic format documents, subject to Terms and Conditions for Electronic Documents at [www.sgs.com/terms\\_e-document.htm](http://www.sgs.com/terms_e-document.htm). Attention is drawn to the limitation of liability, indemnification and jurisdiction issues defined therein. Any holder of this document is advised that information contained hereon reflects the Company's findings at the time of its intervention only and within the limits of Client's instructions, if any. The Company's sole responsibility is to its Client and this document does not exonerate parties to a transaction from exercising all their rights and obligations under the transaction documents. This document cannot be reproduced except in full, without prior written approval of the Company. Any unauthorized alteration, forgery or falsification of the content or appearance of this document is unlawful and offenders may be prosecuted to the fullest extent of the law.

## Mode\_3\_V

Site: SGS 966 Chamber B  
Limit: FCC PART 18  
Mode: Mode\_3  
Note:

Polarization: **Vertical**  
Power: AC 120V/60Hz  
Distance:  
Temperature: 22 °C  
Humidity: 66 %

### Radiated Emission



No.	Mk.	Freq.	Reading Level	Correct Factor	Measurement	Limit	Over	Detector	Comment
		MHz	dBuV	dB/m	dBuV/m	dBuV/m	dB		
1	*	0.1538	54.26	11.45	65.71	63.50	2.21	QP	TX
2		0.3573	35.65	11.27	46.92	63.50	-16.58	QP	
3		0.6010	29.81	11.24	41.05	63.50	-22.45	QP	
4		0.8756	25.91	11.35	37.26	63.50	-26.24	QP	
5		1.4717	14.90	11.23	26.13	63.50	-37.37	QP	
6		4.5014	8.20	11.03	19.23	63.50	-44.27	QP	
7		10.5080	4.16	11.32	15.48	63.50	-48.02	QP	

\*:Maximum data    x:Over limit    !:over margin

File :70205\Data :#23

Page: 1

Unless otherwise stated the results shown in this test report refer only to the sample(s) tested and such sample(s) are retained for 90 days only.

除非另有說明，此報告結果僅對測試之樣品負責，同時此樣品僅保留90天。本報告未經本公司書面許可，不可部份複製。

This document is issued by the Company subject to its General Conditions of Service printed overleaf, available on request or accessible at [www.sgs.com/terms\\_and\\_conditions.htm](http://www.sgs.com/terms_and_conditions.htm) and for electronic format documents, subject to Terms and Conditions for Electronic Documents at [www.sgs.com/terms\\_e-document.htm](http://www.sgs.com/terms_e-document.htm). Attention is drawn to the limitation of liability, indemnification and jurisdiction issues defined therein. Any holder of this document is advised that information contained hereon reflects the Company's findings at the time of its intervention only and within the limits of Client's instructions, if any. The Company's sole responsibility is to its Client and this document does not exonerate parties to a transaction from exercising all their rights and obligations under the transaction documents. This document cannot be reproduced except in full, without prior written approval of the Company. Any unauthorized alteration, forgery or falsification of the content or appearance of this document is unlawful and offenders may be prosecuted to the fullest extent of the law.

### 3. Photographs of Test

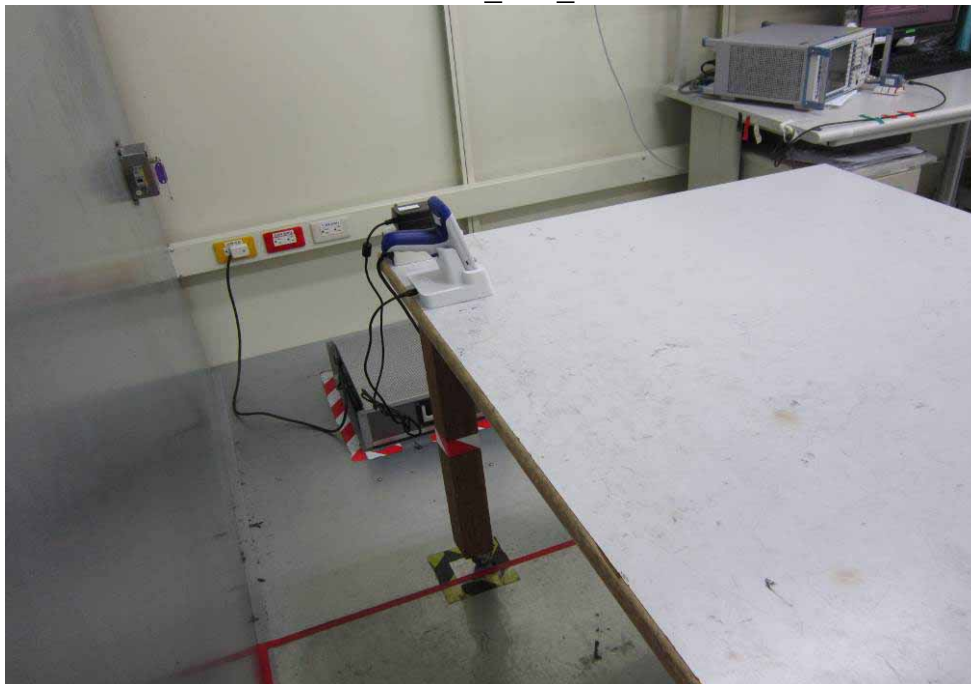
**CE Testing Set-up**

**Model No.:Joya Touch Single Slot Dock Charge Only**

**Mode\_1~3\_+**



**Mode\_1~3\_-**



Unless otherwise stated the results shown in this test report refer only to the sample(s) tested and such sample(s) are retained for 90 days only.  
除非另有說明，此報告結果僅對測試之樣品負責，同時此樣品僅保留90天。本報告未經本公司書面許可，不可部份複製。

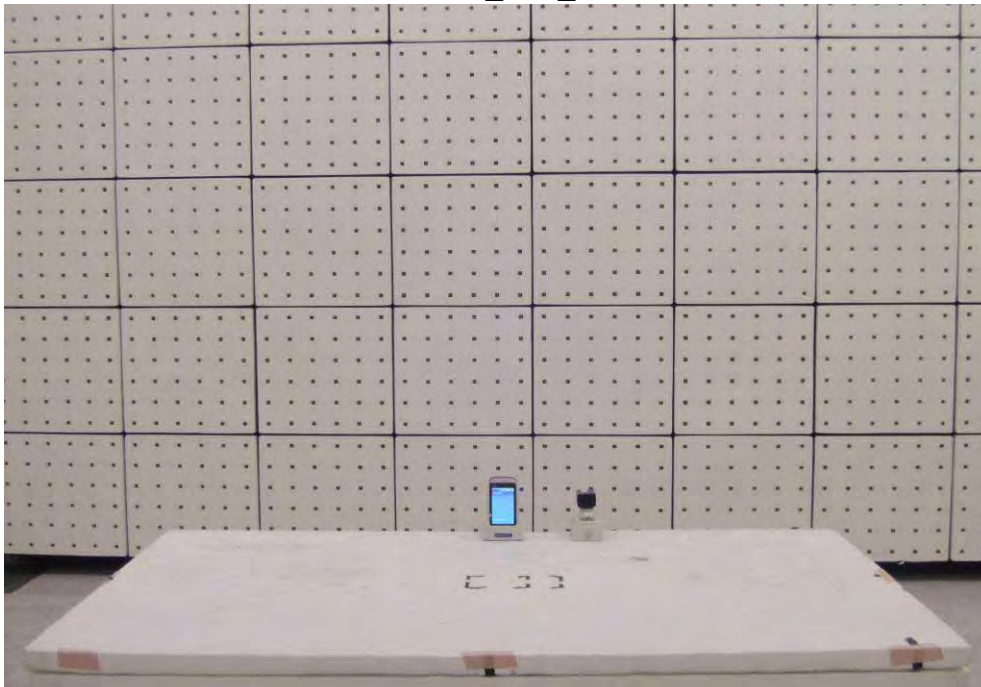
This document is issued by the Company subject to its General Conditions of Service printed overleaf, available on request or accessible at [www.sgs.com/terms\\_and\\_conditions.htm](http://www.sgs.com/terms_and_conditions.htm) and for electronic format documents, subject to Terms and Conditions for Electronic Documents at [www.sgs.com/terms\\_e-document.htm](http://www.sgs.com/terms_e-document.htm). Attention is drawn to the limitation of liability, indemnification and jurisdiction issues defined therein. Any holder of this document is advised that information contained hereon reflects the Company's findings at the time of its intervention only and within the limits of Client's instructions, if any. The Company's sole responsibility is to its Client and this document does not exonerate parties to a transaction from exercising all their rights and obligations under the transaction documents. This document cannot be reproduced except in full, without prior written approval of the Company. Any unauthorized alteration, forgery or falsification of the content or appearance of this document is unlawful and offenders may be prosecuted to the fullest extent of the law.



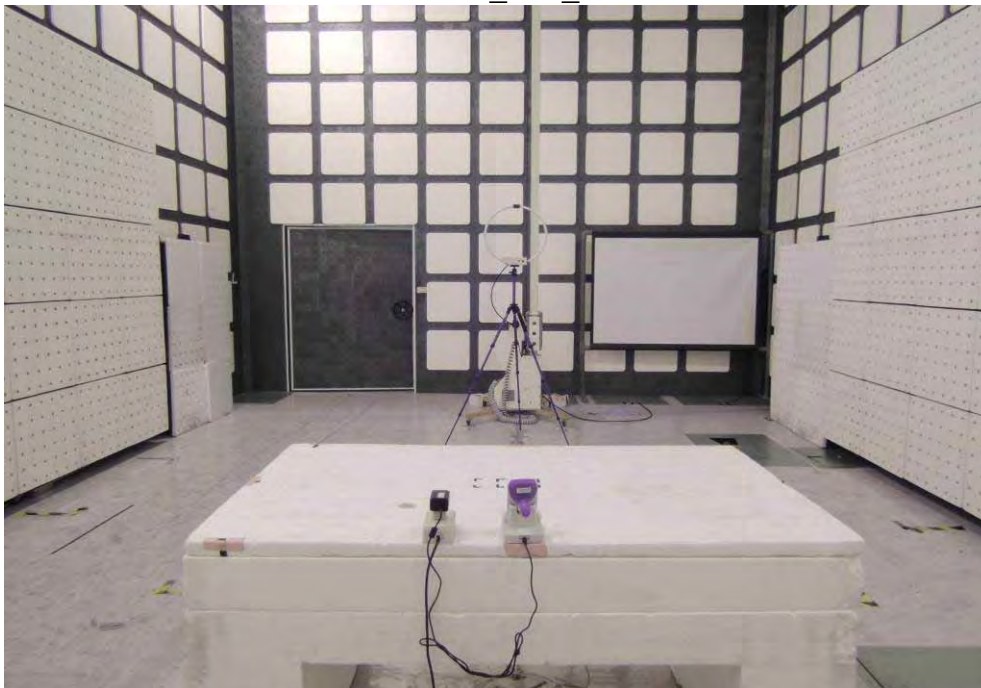
**RE Testing Set-up**

**Model No.:Joya Touch Single Slot Dock Charge Only**

**Mode\_1~3\_+**



**Mode\_1~3\_-**



Unless otherwise stated the results shown in this test report refer only to the sample(s) tested and such sample(s) are retained for 90 days only.

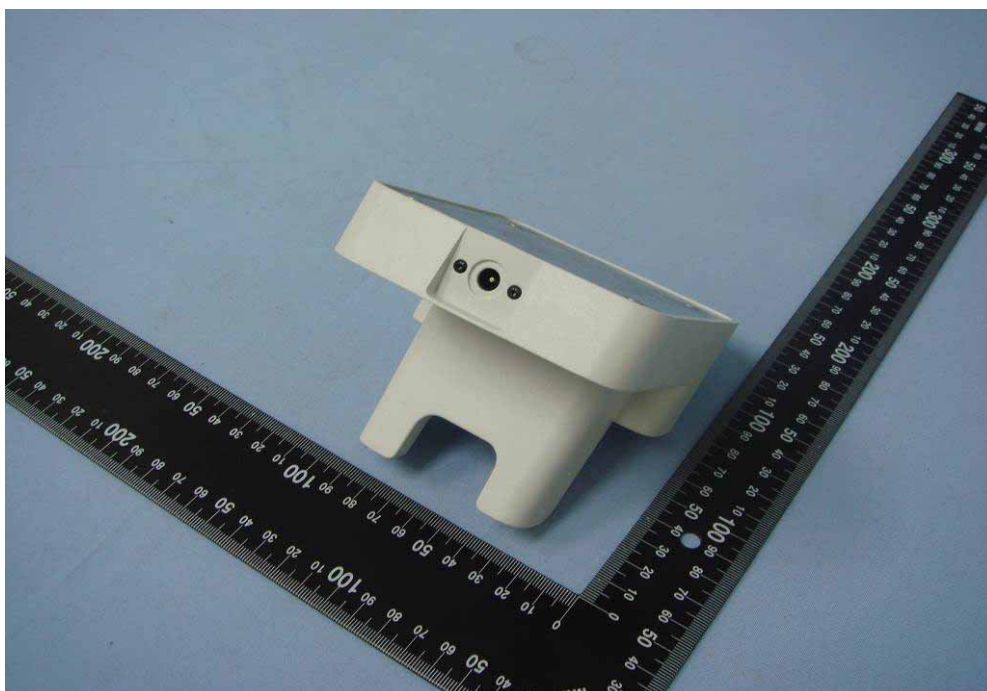
除非另有說明，此報告結果僅對測試之樣品負責，同時此樣品僅保留90天。本報告未經本公司書面許可，不可部份複製。

This document is issued by the Company subject to its General Conditions of Service printed overleaf, available on request or accessible at [www.sgs.com/terms\\_and\\_conditions.htm](http://www.sgs.com/terms_and_conditions.htm) and for electronic format documents, subject to Terms and Conditions for Electronic Documents at [www.sgs.com/terms\\_e-document.htm](http://www.sgs.com/terms_e-document.htm). Attention is drawn to the limitation of liability, indemnification and jurisdiction issues defined therein. Any holder of this document is advised that information contained hereon reflects the Company's findings at the time of its intervention only and within the limits of Client's instructions, if any. The Company's sole responsibility is to its Client and this document does not exonerate parties to a transaction from exercising all their rights and obligations under the transaction documents. This document cannot be reproduced except in full, without prior written approval of the Company. Any unauthorized alteration, forgery or falsification of the content or appearance of this document is unlawful and offenders may be prosecuted to the fullest extent of the law.

# 4. Photographs of Product

**Exterior**

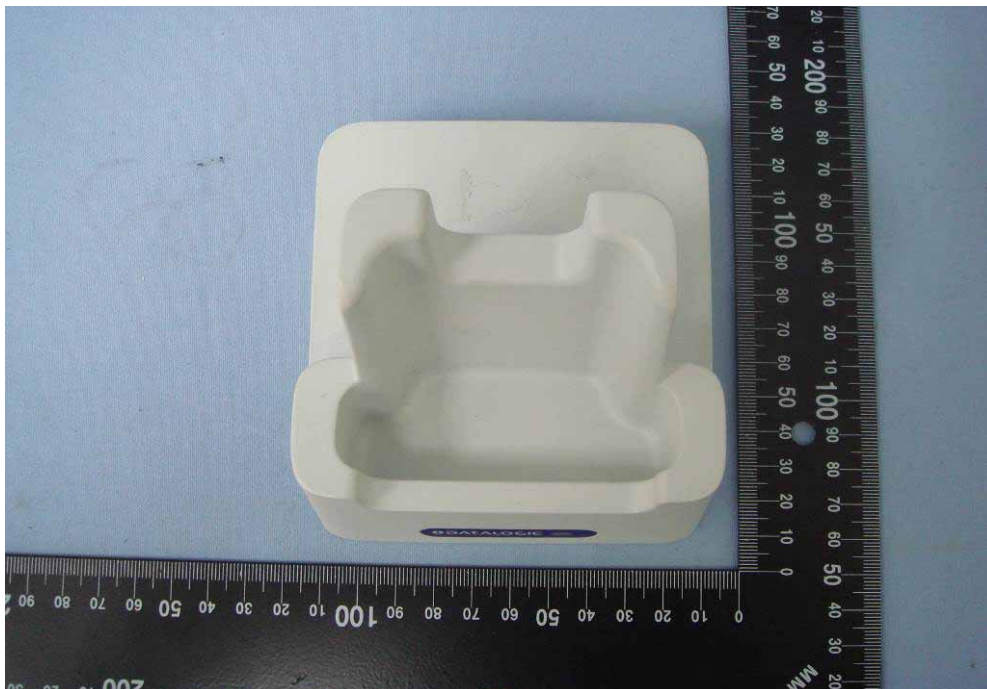
**Model No.:Joya Touch Single Slot Dock Charge Only**



Unless otherwise stated the results shown in this test report refer only to the sample(s) tested and such sample(s) are retained for 90 days only.  
除非另有說明，此報告結果僅對測試之樣品負責，同時此樣品僅保留90天。本報告未經本公司書面許可，不可部份複製。

This document is issued by the Company subject to its General Conditions of Service printed overleaf, available on request or accessible at [www.sgs.com/terms\\_and\\_conditions.htm](http://www.sgs.com/terms_and_conditions.htm) and for electronic format documents, subject to Terms and Conditions for Electronic Documents at [www.sgs.com/terms\\_e-document.htm](http://www.sgs.com/terms_e-document.htm). Attention is drawn to the limitation of liability, indemnification and jurisdiction issues defined therein. Any holder of this document is advised that information contained hereon reflects the Company's findings at the time of its intervention only and within the limits of Client's instructions, if any. The Company's sole responsibility is to its Client and this document does not exonerate parties to a transaction from exercising all their rights and obligations under the transaction documents. This document cannot be reproduced except in full, without prior written approval of the Company. Any unauthorized alteration, forgery or falsification of the content or appearance of this document is unlawful and offenders may be prosecuted to the fullest extent of the law.





Unless otherwise stated the results shown in this test report refer only to the sample(s) tested and such sample(s) are retained for 90 days only.  
除非另有說明，此報告結果僅對測試之樣品負責，同時此樣品僅保留90天。本報告未經本公司書面許可，不可部份複製。

This document is issued by the Company subject to its General Conditions of Service printed overleaf, available on request or accessible at [www.sgs.com/terms\\_and\\_conditions.htm](http://www.sgs.com/terms_and_conditions.htm) and for electronic format documents, subject to Terms and Conditions for Electronic Documents at [www.sgs.com/terms\\_e-document.htm](http://www.sgs.com/terms_e-document.htm). Attention is drawn to the limitation of liability, indemnification and jurisdiction issues defined therein. Any holder of this document is advised that information contained hereon reflects the Company's findings at the time of its intervention only and within the limits of Client's instructions, if any. The Company's sole responsibility is to its Client and this document does not exonerate parties to a transaction from exercising all their rights and obligations under the transaction documents. This document cannot be reproduced except in full, without prior written approval of the Company. Any unauthorized alteration, forgery or falsification of the content or appearance of this document is unlawful and offenders may be prosecuted to the fullest extent of the law.



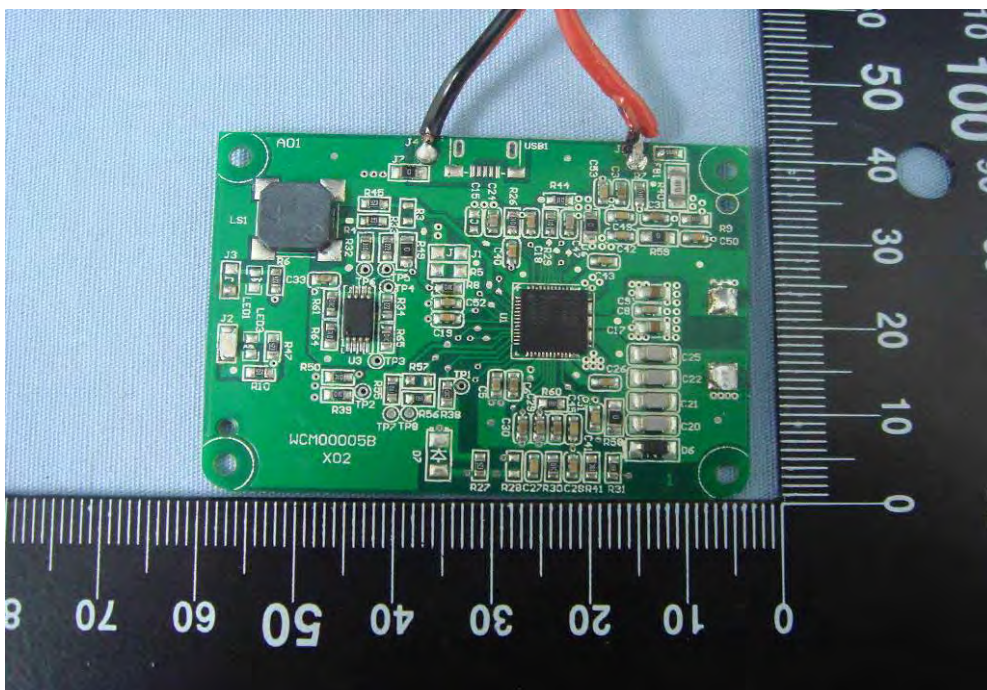
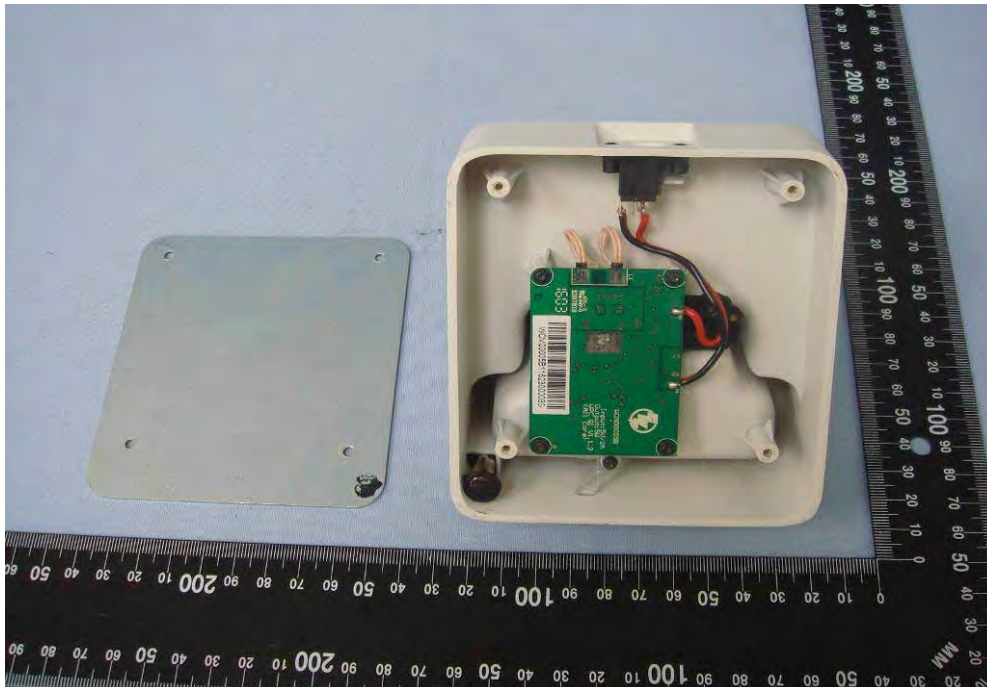
Unless otherwise stated the results shown in this test report refer only to the sample(s) tested and such sample(s) are retained for 90 days only.  
除非另有說明，此報告結果僅對測試之樣品負責，同時此樣品僅保留90天。本報告未經本公司書面許可，不可部份複製。

This document is issued by the Company subject to its General Conditions of Service printed overleaf, available on request or accessible at [www.sgs.com/terms\\_and\\_conditions.htm](http://www.sgs.com/terms_and_conditions.htm) and for electronic format documents, subject to Terms and Conditions for Electronic Documents at [www.sgs.com/terms\\_e-document.htm](http://www.sgs.com/terms_e-document.htm). Attention is drawn to the limitation of liability, indemnification and jurisdiction issues defined therein. Any holder of this document is advised that information contained hereon reflects the Company's findings at the time of its intervention only and within the limits of Client's instructions, if any. The Company's sole responsibility is to its Client and this document does not exonerate parties to a transaction from exercising all their rights and obligations under the transaction documents. This document cannot be reproduced except in full, without prior written approval of the Company. Any unauthorized alteration, forgery or falsification of the content or appearance of this document is unlawful and offenders may be prosecuted to the fullest extent of the law.



**Interior**

**Model No.:Joya Touch Single Slot Dock Charge Only**

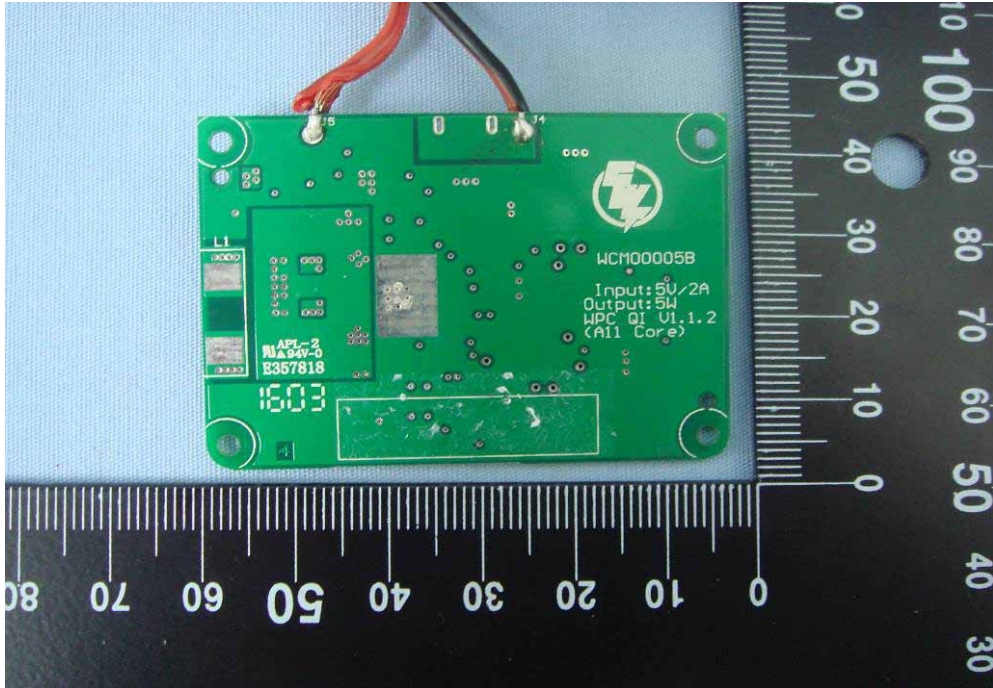


Unless otherwise stated the results shown in this test report refer only to the sample(s) tested and such sample(s) are retained for 90 days only.

除非另有說明，此報告結果僅對測試之樣品負責，同時此樣品僅保留90天。本報告未經本公司書面許可，不可部份複製。

This document is issued by the Company subject to its General Conditions of Service printed overleaf, available on request or accessible at [www.sgs.com/terms\\_and\\_conditions.htm](http://www.sgs.com/terms_and_conditions.htm) and for electronic format documents, subject to Terms and Conditions for Electronic Documents at [www.sgs.com/terms\\_e-document.htm](http://www.sgs.com/terms_e-document.htm). Attention is drawn to the limitation of liability, indemnification and jurisdiction issues defined therein. Any holder of this document is advised that information contained hereon reflects the Company's findings at the time of its intervention only and within the limits of Client's instructions, if any. The Company's sole responsibility is to its Client and this document does not exonerate parties to a transaction from exercising all their rights and obligations under the transaction documents. This document cannot be reproduced except in full, without prior written approval of the Company. Any unauthorized alteration, forgery or falsification of the content or appearance of this document is unlawful and offenders may be prosecuted to the fullest extent of the law.





**\*\* End of Report \*\***

Unless otherwise stated the results shown in this test report refer only to the sample(s) tested and such sample(s) are retained for 90 days only.

除非另有說明，此報告結果僅對測試之樣品負責，同時此樣品僅保留90天。本報告未經本公司書面許可，不可部份複製。

This document is issued by the Company subject to its General Conditions of Service printed overleaf, available on request or accessible at [www.sgs.com/terms\\_and\\_conditions.htm](http://www.sgs.com/terms_and_conditions.htm) and for electronic format documents, subject to Terms and Conditions for Electronic Documents at [www.sgs.com/terms\\_e-document.htm](http://www.sgs.com/terms_e-document.htm). Attention is drawn to the limitation of liability, indemnification and jurisdiction issues defined therein. Any holder of this document is advised that information contained hereon reflects the Company's findings at the time of its intervention only and within the limits of Client's instructions, if any. The Company's sole responsibility is to its Client and this document does not exonerate parties to a transaction from exercising all their rights and obligations under the transaction documents. This document cannot be reproduced except in full, without prior written approval of the Company. Any unauthorized alteration, forgery or falsification of the content or appearance of this document is unlawful and offenders may be prosecuted to the fullest extent of the law.