

Datalogic S.r.l.
Via San Vitalino 13
 40012 Calderara di Reno (BO)
 Italy
 Tel. +39 051 3147011
 Fax +39 051 3147205

2016-2017 Datalogic S.p.A. and/or its affiliates

• All rights reserved. • Without limiting the rights under copyright, no part of this documentation may be reproduced, stored in or introduced into a retrieval system, or transmitted in any form or by any means, or for any purpose, without the express written permission of Datalogic S.p.A. and/or its affiliates. Owners of Datalogic products are hereby granted a non-exclusive, revocable license to reproduce and transmit this documentation for the purchaser's own internal business purposes. Purchaser shall not remove or alter any proprietary notices, including copyright notices, contained in this documentation and shall ensure that all notices appear on any reproductions of the documentation. Should future revisions of this manual be published, you can acquire printed versions by contacting your Datalogic representative. Electronic versions may either be downloadable from the Datalogic website (www.datalogic.com) or provided on appropriate media. If you visit our website and would like to make comments or suggestions about this or other Datalogic publications, please let us know via the "Contact Datalogic" page.

Disclaimer

Datalogic has taken reasonable measures to provide information in this manual that is complete and accurate, however, Datalogic reserves the right to change any specification at any time without prior notice. Datalogic and the Datalogic logo are registered trademarks of Datalogic S.p.A. in many countries, including the U.S.A. and the E.U.

The Joya logo is a trademark of Datalogic S.p.A. and/or its affiliates, registered in the U.S. and the E.U.

All other trademarks and brands are property of their respective owners.

Patents

See www.patents.datalogic.com for patent list.

Support Through the Website

Datalogic provides several services as well as technical support through its website. Log on to www.datalogic.com and click on the **SUPPORT > STORE AUTOMATION** category link. From this page you can select your product model from the dropdown list which gives you access to:

- Downloads** including Data Sheets, Manuals, Software & Utilities, and Drawings;
- Repair Program** for On-Line Return Material Authorizations (RMAs) plus Repair Center contact information;
- Service Program** containing details about Maintenance Agreements;
- Technical Support** through email or phone.

Warranty Terms and Conditions

The warranty period is 1 year for the device and 90 days for consumables (e.g. battery, power supply, cable etc.) from date of purchase at our company.



JOYA TOUCH
Single Slot Dock Locking



Quick Start Guide

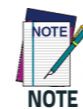


See the **Regulatory Addendum** included with your product for additional regulatory, safety and legal information.

©2016-2017 Datalogic S.r.l. • All rights reserved. Datalogic and the Datalogic logo are registered trademarks of Datalogic S.p.A. in many countries, including the U.S.A. and the E.U.



www.datalogic.com



Read this manual carefully before using the JOYA TOUCH Single Slot Dock Locking. The user is responsible for any damages caused by incorrect use of the equipment or by inobservance of the indication supplied in this manual.

Out of the Box

The JOYA TOUCH Single Slot Dock Locking package contains:

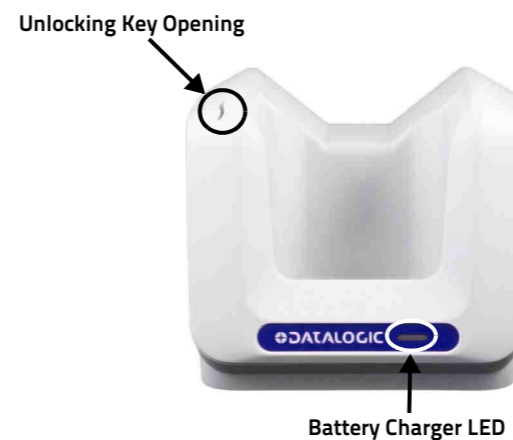
- 1 JOYA TOUCH Single Slot Dock Locking
- 1 metal plate
- 1 unlock key
- 4 cross pan head screws
- 1 round washer head screw
- 1 Quick Start Guide
- 1 Safety & Regulatory Addendum



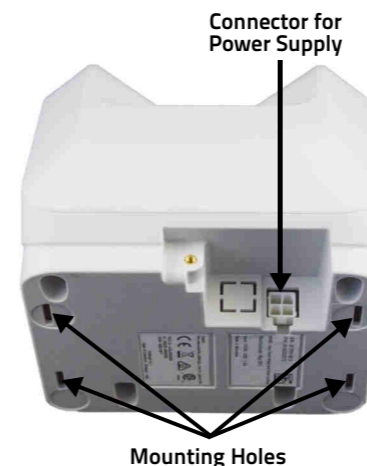
Keep the original packaging for use when sending products to the technical assistance center. Damage caused by improper packaging is not covered under the warranty.

General View

Front View



Bottom View



Accessories

- 91ACC0045 JOYA TOUCH Cradle Unlock Key (5 PCS)
- 91ACC0048 JOYA TOUCH 3-Slot Cradle Power Supply. Line Cord required

Fast the Dock to a Surface

To securely fasten the JOYA TOUCH Single Slot Dock Locking to tables, desks and other surfaces, and to prevent the dock from moving when you remove the device, use the metal plate included in the box.

1. Secure the metal plate to the desired surface with the 4 provided cross pan head screws. We recommend to use a torx-10 screwdriver.



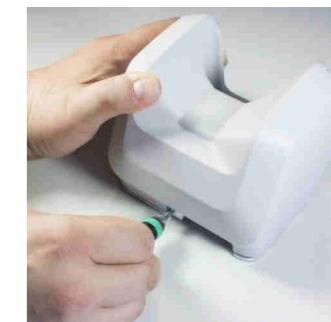
2. Insert the dock into the metal plate. Each protrusion on the metal plate is aligned with a slot in the dock to prevent incorrect insertion.



3. Push the dock backward until it snaps into place.



4. Secure the dock with the provided round washer head screw. Use a cross screwdriver.



Remove the JOYA TOUCH from the Single Slot Dock Locking

The JOYA TOUCH Single Slot Dock Locking can be unlocked using the unlock key provided with the cradle or by software sending an unlock command from the inserted device (see the Joya Touch user's manual or the SDK documentation).

To locally unlock the dock and remove the JOYA TOUCH:

1. Insert the unlock key into the opening and gently press it all the way down:



2. Remove the JOYA TOUCH while keeping the unlock key pressed:



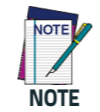
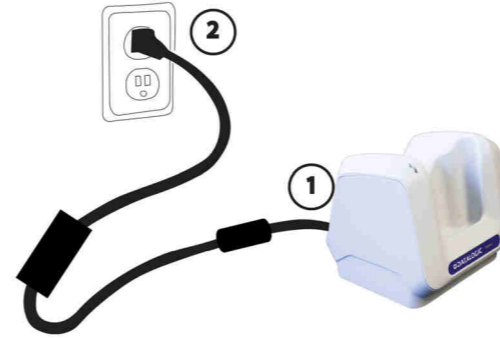
Powering the Dock

To prevent the risk of short-circuiting, first plug the power cord into the power connector on the back of the dock, then connect the power cord to the power supply.



Use only the Datalogic power supply 91ACC0048 to power the JOYA TOUCH Single Slot Dock Locking.

The Single Slot Dock Locking cannot be daisy-chained to a JOYA TOUCH 3-Slot Cradle.



Charge the battery for a minimum of 3 hours.

LED Indicators

LED	Status
Battery Charger LED	
Solid green for 3 seconds	Dock powering on.
Off	Terminal not charging.
Solid red	Terminal charging.
Solid green	Terminal charging complete.
Blinking red (periodic - two pulses)	Terminal charging failure.
Blinking red (periodic - single pulse)	Dock failure.

Radio Technologies and Frequency Bands

The JOYA TOUCH Single Slot Dock Locking incorporates the following radio technologies and supports the corresponding frequencies, as specified below:

Radio Technology	Frequency Bands
NFC (Near Field Communication)	13.56MHz
Wireless Charging (Transmitter)	130kHz

Technical Specifications

Electrical Features	
Consumption	12V 5A
Indicators	Battery Charger LED (bi-color)
Environmental Features	
Operating Temperature*	-10° to 45° C
Storage Temperature	-20 to 70° C
Humidity**	95% non condensing for temperatures < 40° C
Mechanical Features	
Dimensions (L x W x H)	Dock: 124x119.6x114.5mm / 4.9x4.7x4.5in
	Dock with JOYA TOUCH Handheld: 124x119.6x175.7mm / 4.9x4.7x6.9in
	Dock with JOYA TOUCH Pistol Grip: 124x148.8x175.7mm / 4.9x5.9x6.9in
Weight	Dock: 522g/ 18.4oz
	Dock with Metal Plate: 634g/ 22.4oz

* The JOYA TOUCH should be charged at an ambient temperature between 0 and 35° C to achieve the maximum charging rate. Never charge the main device in a closed space where excessive heat can build up. Close to the limits of the working temperature, some display and/or battery performance degradation may occur.

** Multiple rapid humidity and/or temperature variations may cause condensing.

This device must be installed and operated with minimum distance of 10 cm between the radiator and your body.

Datalogic S.r.l.

Via San Vitalino 13
40012 Calderara di Reno (BO)
Italy
Tel. +39 051 3147011
Fax +39 051 3147205

©2017 Datalogic S.p.A. and/or its affiliates

• All rights reserved. • Without limiting the rights under copyright, no part of this documentation may be reproduced, stored in or introduced into a retrieval system, or transmitted in any form or by any means, or for any purpose, without the express written permission of Datalogic S.p.A. and/or its affiliates. Owners of Datalogic products are hereby granted a non-exclusive, revocable license to reproduce and transmit this documentation for the purchaser's own internal business purposes. Purchaser shall not remove or alter any proprietary notices, including copyright notices, contained in this documentation and shall ensure that all notices appear on any reproductions of the documentation. Should future revisions of this manual be published, you can acquire printed versions by contacting your Datalogic representative. Electronic versions may either be downloadable from the Datalogic website (www.datalogic.com) or provided on appropriate media. If you visit our website and would like to make comments or suggestions about this or other Datalogic publications, please let us know via the "Contact Datalogic" page.

Disclaimer

Datalogic has taken reasonable measures to provide information in this manual that is complete and accurate, however, Datalogic reserves the right to change any specification at any time without prior notice. Datalogic and the Datalogic logo are registered trademarks of Datalogic S.p.A. in many countries, including the U.S.A. and the E.U. The JOYA logo is a trademark of Datalogic S.p.A. and/or its affiliates, registered in the U.S. and the E.U. All other brand and product names may be trademarks of their respective owners.

Patents

See www.patents.datalogic.com for patent list.

This product is covered by one or more of the following patents:
Design patents: EP002805218
Utility patents: US7620475.

Cleaning The Dock

Periodically clean the JOYA TOUCH Single Slot Dock Locking using a soft cloth slightly dampened with only water or Isopropyl Alcohol (70%).

Do not use any other cleaning agents (e.g. different alcohol, abrasive or corrosive products, solvents) or abrasive pads to clean the dock.

Do not spray or pour liquids directly onto the dock.

The dock is not water resistant. Keep it dry.

Waste Electrical and Electronic Equipment (WEEE)



Information for the User

At the end of its useful life, the product marked with the crossed out wheeled wastebin must be disposed of separately from urban waste.

For more detailed information about disposal, contact the supplier that provided you with the product in question or consult the dedicated section at the website <http://www.datalogic.com>.

Informazione per gli utenti

L'apparecchiatura che riporta il simbolo del bidone barrato deve essere smaltita, alla fine della sua vita utile, separatamente dai rifiuti urbani.

Per maggiori dettagli sulle modalità di smaltimento, contattare il Fornitore dal quale è stata acquistata l'apparecchiatura o consultare la sezione dedicata sul sito <http://www.datalogic.com>.

Information aux utilisateurs

Au terme de sa vie utile, le produit qui porte le symbole d'un caisson à ordures barré ne doit pas être éliminé avec les déchets urbains.

Pour obtenir des informations complémentaires concernant l'élimination, veuillez contacter le fournisseur auprès duquel vous avez acheté le produit ou consulter la section consacrée au site web <http://www.datalogic.com>.

Benutzerinformation bezüglich

Am Ende des Gerätelebenszyklus darf das Produkt nicht über den städtischen Hausmüll entsorgt werden. Eine entsprechende Mülltrennung ist erforderlich.

Weitere Informationen zu dieser Richtlinie erhalten sie von ihrem Lieferanten über den sie das Produkt erworben haben, oder besuchen sie unsere Homepage unter <http://www.datalogic.com>.

Información para el usuario

Al final de su vida útil, el producto marcado con un símbolo de contenedor de basura móvil tachado no debe eliminarse junto a los desechos urbanos.

Para obtener una información más detallada sobre la eliminación, por favor, póngase en contacto con el proveedor donde lo compró o consultar la sección dedicada en el Web site <http://www.datalogic.com>.



JOYA TOUCH

Single Slot Dock Locking



Safety & Regulatory Addendum



852001130 (Rev. A) July 2017



This document is an addendum to the Quick Start Guide (QSG) for this product. See the QSG for additional product information.



www.datalogic.com



Read carefully the JOYA TOUCH Single Slot Dock Locking Quick Start Guide before performing any type of connection to the JOYA TOUCH Single Slot Dock Locking. The user is responsible for any damage caused by incorrect use of the equipment or by inobservance of the indication supplied in the user manual.

General Safety Rules



CAUTION

- Before using the JOYA TOUCH JOYA TOUCH Single Slot Dock Locking, read this Addendum carefully.
- Before using the JOYA TOUCH devices and the battery packs, read also the JOYA TOUCH Safety & Regulatory Addendum.
- Use only the components and accessories supplied by the manufacturer for the specific JOYA TOUCH being used.
- Do not attempt to disassemble the JOYA TOUCH JOYA TOUCH Single Slot Dock Locking, as it does not contain parts that can be repaired by the user. Any tampering will invalidate the warranty.
- Do not submerge the JOYA TOUCH JOYA TOUCH Single Slot Dock Locking in liquid products.
- For further information or support, refer to the Datalogic web site: www.datalogic.com.

Power Supply

The device is intended to be supplied by a UL Listed/CSA Certified Power Unit LPS/SELV rating 12V, min 5A power source which supplies power via the power connector of the cable.

Any changes or modifications to equipment, not expressly approved by Datalogic could void the user's authority to operate the equipment.

Wireless and Radio Frequencies Warnings



WARNING

Do not attempt to charge any other device different from JOYA TOUCH devices. Make sure there's nothing between charger and the device.

Do not insert nor attach anything, such as stickers, inside the dock slots.

Use only the supplied or an approved replacement antenna. Unauthorized antennas, modifications or attachments could damage the product and may violate laws and regulations.

Most modern electronic equipment is shielded from RF signals. However, certain electronic equipment may not be shielded against the RF signals generated by JOYA TOUCH.

Datalogic recommends persons with pacemakers or other medical devices to follow the same recommendations provided by Health Industry Manufacturers Associations for mobile phones.

Persons with pacemakers should ALWAYS keep this device more than twenty five (25) cm from their pacemaker and/or any other medical device.

Do not install the dock in any area with a potentially explosive atmosphere. Observe restrictions and follow closely any laws, regulations, warnings and best practices on the use of radio equipment near fuel storage areas or fuel distribution areas, chemical plants or where any operation involves use of explosive materials.

Do not store or carry flammable liquids, explosive gases or materials with the device or its parts or accessories.

Areas with a potentially explosive atmosphere are often, but not always, clearly marked or shown.

Sparks in such areas could cause an explosion or fire, resulting in injury or even death.

Marking and European Economic Area (EEA)

In radio systems configured with mobile computers and access points, the frequencies to be used must be allowed by the spectrum authorities of the specific country in which the installation takes place. Be absolutely sure that the system frequencies are correctly set to be compliant with the spectrum requirements of the country. The Radio modules used in this product automatically adapt to the frequencies set by the system and do not require any parameter settings.

Simplified EU Declaration of Conformity

Hereby, Datalogic S.r.l. declares that the radio equipment type JOYA TOUCH Single Slot Dock Locking is in compliance with Directive 2014/53/EU. The full text of the EU declaration of conformity is available at the following internet address: www.datalogic.com.

Statement of compliance

BG

С настоящото Datalogic S.r.l. декларира, че този тип радиосъоръжение JOYA TOUCH Single Slot Dock Locking е в съответствие с Директива 2014/53/ЕС. Цялостният текст на ЕС декларацията за съответствие може да се намери на следния интернет адрес: www.datalogic.com.

ES

Por la presente, Datalogic S.r.l. declara que el tipo de equipo radioeléctrico JOYA TOUCH Single Slot Dock Locking es conforme con la Directiva 2014/53/UE. El texto completo de la declaración UE de conformidad está disponible en la dirección Internet siguiente: www.datalogic.com.

CS

Tímto Datalogic S.r.l. prohlašuje, že typ rádiového zařízení JOYA TOUCH Single Slot Dock Locking je v souladu se směrnicí 2014/53/EU. Úplné znění EU prohlášení o shodě je k dispozici na této internetové adrese: www.datalogic.com.

DE

Hermed erklærer Datalogic S.r.l., at radioudstyrstypen JOYA TOUCH Single Slot Dock Locking er i overensstemmelse med direktiv 2014/53/EU. EU-overensstemmelseserklæringens fulde tekst kan findes på følgende internetadresse: www.datalogic.com.

ET

Käesolevaga deklareerib Datalogic S.r.l., et käesolev raadioseadme tüüp JOYA TOUCH Single Slot Dock Locking vastab direktiivi 2014/53/EL nõuetele. ELi vastavusdeklaratsiooni täielik tekst on kättesaadav järgmisel internetiaadressil: www.datalogic.com

EL

Με την παρούσα ο/η Datalogic S.r.l., δηλώνει ότι ο ραδιοεξοπλισμός JOYA TOUCH Single Slot Dock Locking πληροί την οδηγία 2014/53/EE. Το πλήρες κείμενο της δήλωσης συμμόρφωσης EE διατίθεται στην ακόλουθη ιστοσελίδα στο διαδίκτυο: www.datalogic.com.

EN

Hereby, Datalogic S.r.l. declares that the radio equipment type JOYA TOUCH Single Slot Dock Locking is in compliance with Directive 2014/53/EU. The full text of the EU declaration of conformity is available at the following internet address: www.datalogic.com.

FR

Le soussigné, Datalogic S.r.l., déclare que l'équipement radioélectrique du type JOYA TOUCH Single Slot Dock Locking est conforme à la directive 2014/53/UE. Le texte complet de la déclaration UE de conformité est disponible à l'adresse internet suivante: www.datalogic.com.

HR

Datalogic S.r.l. ovime izjavljuje da je radijska oprema tipa JOYA TOUCH Single Slot Dock Locking u skladu s Direktivom 2014/53/EU. Cjeloviti tekst EU izjave o sukladnosti dostupan je na sljedećoj internetskoj adresi: www.datalogic.com.

IT

Il fabbricante, Datalogic S.r.l., dichiara che il tipo di apparecchiatura radio JOYA TOUCH Single Slot Dock Locking è conforme alla direttiva 2014/53/UE. Il testo completo della dichiarazione di conformità UE è disponibile al seguente indirizzo Internet: www.datalogic.com.

LV

Ar šo Datalogic S.r.l. deklarē, ka radioiekārta JOYA TOUCH Single Slot Dock Locking atbilst Direktīvai 2014/53/ES. Pilns ES atbilstības deklarācijas teksts ir pieejams šādā interneta vietnē: www.datalogic.com.

LT

Aš, Datalogic S.r.l., patvirtinu, kad radijoįrenginių tipas JOYA TOUCH Single Slot Dock Locking atitinka Direktyvą 2014/53/ES. Visas ES atitikties deklaracijos tekstas prieinamas šiuo interneto adresu: www.datalogic.com.

HU

Datalogic S.r.l. igazolja, hogy a JOYA TOUCH Single Slot Dock Locking típusú rádióberendezés megfelel a 2014/53/EU irányelvnek. Az EU-megfelelőségi nyilatkozat teljes szövege elérhető a következő internetes címen: www.datalogic.com.

MT

B'dan, Datalogic S.r.l. niddikjara li dan it-tip ta' taghmir tar-radju JOYA TOUCH Single Slot Dock Locking huwa konformi mad-Direttiva 2014/53/UE. It-test kollu tad-dikjarazzjoni ta' konformita' tal-UE huwa disponibbli f'dan l-indirizz tal-Internet li gejj: www.datalogic.com.

PL

Datalogic S.r.l. niniejszym oświadczam, że typ urządzenia radiowego JOYA TOUCH Single Slot Dock Locking jest zgodny z dyrektywą 2014/53/UE. Pełny tekst deklaracji zgodności UE jest dostępny pod następującym adresem internetowym: www.datalogic.com.

PT

O(a) abaixo assinado(a) Datalogic S.r.l. declara que o presente tipo de equipamento de rádio JOYA TOUCH Single Slot Dock Locking está em conformidade com a Diretiva 2014/53/UE. O texto integral da declaração de conformidade está disponível no seguinte endereço de Internet: www.datalogic.com.

RO

Prin prezenta, Datalogic S.r.l. declară că tipul de echipamente radio JOYA TOUCH Single Slot Dock Locking este în conformitate cu Directiva 2014/53/UE. Textul integral al declarației UE de conformitate este disponibil la următoarea adresă internet: www.datalogic.com.

SK

Datalogic S.r.l. týmto vyhlasuje, že rádiové zariadenie typu JOYA TOUCH Single Slot Dock Locking je v súlade so smernicou 2014/53/EÚ. Úplné EÚ vyhlásenie o zhode je k dispozícii na tejto internetovej adrese: www.datalogic.com.

SL

Datalogic S.r.l. potrjuje, da je tip radijske opreme JOYA TOUCH Single Slot Dock Locking skladen z Direktivo 2014/53/EU. Celotno besedilo izjave EU o skladnosti je na voljo na naslednjem spletnem naslovu: www.datalogic.com

FI

Datalogic S.r.l. vakuuttaa, että radiolaitetyyppi JOYA TOUCH Single Slot Dock Locking on direktiivin 2014/53/EU mukainen. EU-vaatimustenmukaisuusvakuutuksen täysimittainen teksti on saatavilla seuraavassa internetosoitteessa: www.datalogic.com.

SV

Härmed försäkrar Datalogic S.r.l. att denna typ av radioutrustning JOYA TOUCH Single Slot Dock Locking överensstämmer med direktiv 2014/53/EU. Den fullständiga texten till EU-försäkran om överensstämmelse finns på följande webbadress: www.datalogic.com.

Information for the User

ENGLISH

Contact the competent authority responsible for the management of radio frequency devices of your country to verify any possible restrictions or licenses required.

ITALIANO

Prendi contatto con l'autorità competente per la gestione degli apparati a radio frequenza del tuo paese, per verificare eventuali restrizioni o licenze.

DEUTSCH

Wenden Sie sich an die für Radiofrequenzgeräte zuständige Behörde Ihres Landes, um zu prüfen ob es Einschränkungen gibt, oder eine Lizenz erforderlich ist.

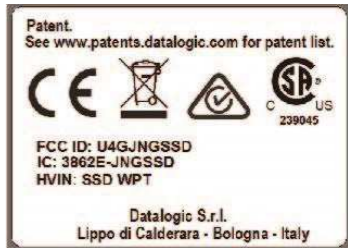
FRANÇAIS

Contactez l'autorité compétente en la gestion des appareils à radio fréquence de votre pays pour vérifier d'éventuelles restrictions ou licences.

ESPAÑOL

Contacta la autoridad competente para la gestión de los dispositivos de radio frecuencia de tu país, para verificar cualesquiera restricciones o licencias posibles requerida.

FCC/IC Labeling



FCC Compliance

This device complies with Part 15 of the FCC Rules.

Operation is subject to the following two conditions:

- (1) this device may not cause harmful interference, and
- (2) this device must accept any interference received, including interference that may cause undesired operation.

NOTICE:

Changes or modifications made to this equipment not expressly approved by Datalogic S.r.l. may void the FCC authorization to operate this equipment.

NOTE: This equipment has been tested and found to comply with the limits for a Class B digital device, pursuant to Part 15 of the FCC Rules. These limits are designed to provide reasonable protection against harmful interference in a residential installation. This equipment generates, uses and can radiate radio frequency energy and, if not installed and used in accordance with the instructions, may cause harmful interference to radio communications. However, there is no guarantee that interference will not occur in a particular installation. If this equipment does cause harmful interference to radio or television reception, which can be determined by turning the equipment off and on, the user is encouraged to try to correct the interference by one or more of the following measures:

- Reorient or relocate the receiving antenna.
- Increase the separation between the equipment and receiver.
- Connect the equipment into an outlet on a circuit different from that to which the receiver is connected.
- Consult the dealer or an experienced radio/TV technician for help.

This device complies with Part 18 of the FCC Rules. This equipment generates uses and can radiate radio frequency energy and, if not installed and used in accordance with the instructions, may cause harmful interference to radio communications. If this equipment does cause harmful interference to radio or television reception, which can be determined by turning the equipment off and on, the user is encouraged to try to correct the interference by one or more of the following measures:

- Increase the separation between the equipment and any other radio device.
- Connect the equipment into an outlet on a circuit different from that to which the receiver is connected.

ISED Compliance

NOTICE:

This device complies with Industry Canada licence-exempt RSS standard(s).

Operation is subject to the following two conditions:

- (1) this device may not cause harmful interference, and
- (2) this device must accept any interference received, including interference that may cause undesired operation.

Le présent appareil est conforme aux CNR d'Industrie Canada applicables aux appareils radio

exempts de licence. L'exploitation est autorisée aux deux conditions suivantes:

- (1) l'appareil ne doit pas produire de brouillage, et
- (2) l'utilisateur de l'appareil doit accepter tout brouillage radioélectrique subi, même si le brouillage est susceptible d'en compromettre le fonctionnement.

Radiofrequency Radiation Exposure Information

This device was tested for E and H field to demonstrate compliance with RF exposure limits, according to international Standards covering human exposure to electromagnetic fields from radio devices.

More information about the relevant Standards for RF exposure measurement methods and procedures may be found in the CE DoC included in the product user manual available at www.datalogic.com website and at the FCC public listing www.fcc.gov under the FCC IDs specified in the FCC/IC labeling section.

This device is compliant with RF exposure limits for general population/uncontrolled exposure specified in Council Recommendation 1999/519/EC Annex II.

Radio Technologies and Frequency Bands

The JOYA TOUCH Single Slot Dock Locking incorporates the following radio technologies and supports the corresponding frequencies, as specified below:

Radio Technology	Frequency Bands
NFC (Near Field Communication)	13.56MHz
Wireless Charging (Transmitter)	130kHz

NOTES