

Annex 3: Internal photographs of EUT  
to T E S T R E P O R T  
No.: 17-1-0180901T18a

According to:

**FCC Regulations**







Part 15.207  
Part 15.247  
Part 15.407

for

Datalogic S.r.l.

**FALCON X4**  
**Type E00ANM4HS0GF0A4**

FCC ID: U4GFX4WB

Laboratory Accreditation and Listings			
 <b>DAkKS</b> Deutsche Akkreditierungsstelle D-PL-12047-01-01	 <b>FCC</b> FEDERAL COMMUNICATIONS COMMISSION USA • CANADA • MEXICO MRA US-EU 0003	 <b>Industry Canada</b> Reg. No.: 3462D-1 Reg. No.: 3462D-2 Reg. No.: 3462D-3	 <b>VCEI</b> Voluntary Controls for Electromagnetic Emissions Reg. No.: R-2666 C-2914, T-1967, G-301
 <b>WiFi</b> ALLIANCE AUTHORIZED RF LABORATORY	 <b>ctia</b> Authorized Test Lab Lab Code: 20011130-00		
accredited according to DIN EN ISO/IEC 17025			
<p align="center"> <b>CETECOM GmbH</b>            Laboratory Radio Communications &amp; Electromagnetic Compatibility            Im Teelbruch 116 • 45219 Essen • Germany            Registered in Essen, Germany, Reg. No.: HRB Essen 8984            Tel.: + 49 (0) 20 54 / 95 19-954 • Fax: + 49 (0) 20 54 / 95 19-964            E-mail: info@cetecom.com • Internet: www.cetecom.com         </p>			

## TABLE OF CONTENTS:

<b>1. INTERNAL PHOTOGRAPHS.....</b>	<b>3</b>
1.1. Equipment Under Test Assembly .....	3
1.2. Equipment Under Test Radio Module +Antennas .....	12

## **1. Internal photographs**

### **1.1. Equipment Under Test Assembly**



**Photograph 1: FALCON X4 – Upper Case Overview**



**Photograph 2: FALCON X4 – Keyboard (Numeric)**



**Photograph 3: FALCON X4 – Keyboard (Alphanumeric)**

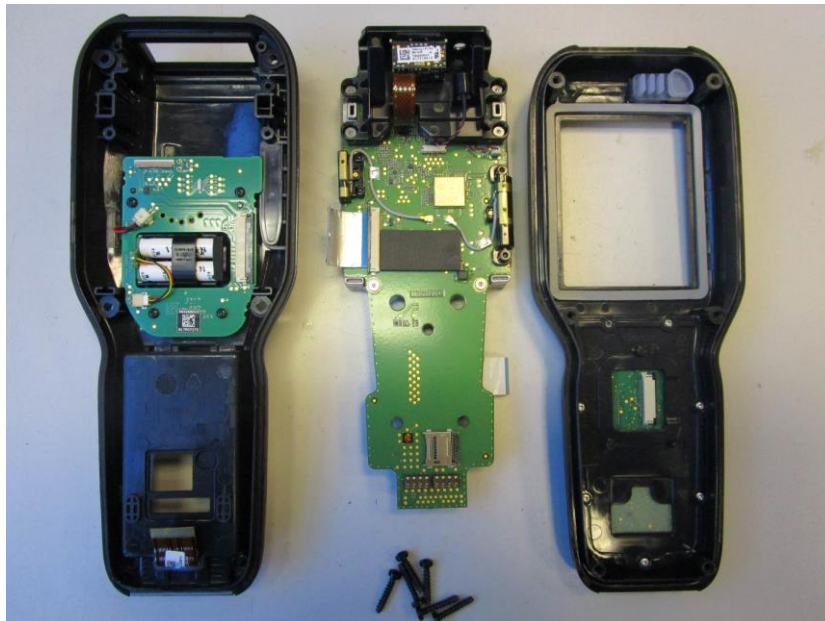


**Photograph 4: FALCON X4 – Handle Assembly disconnected**

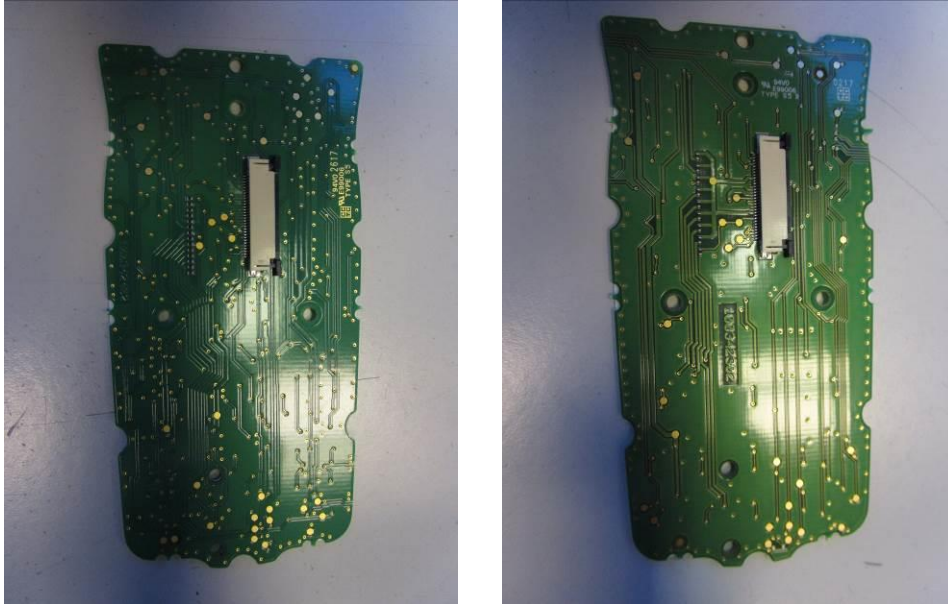




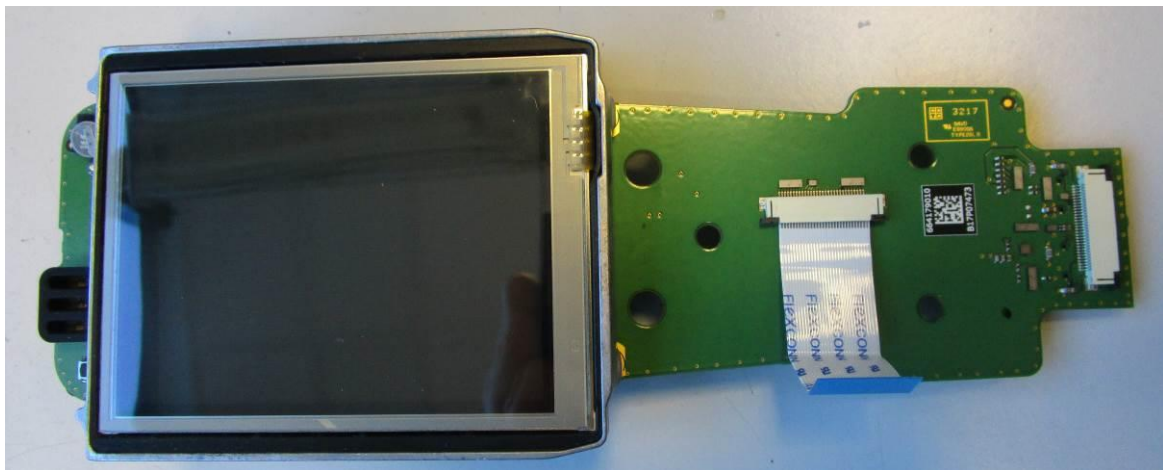
**Photograph 5: FALCON X4 – Internal PCB Overview-Front Side**



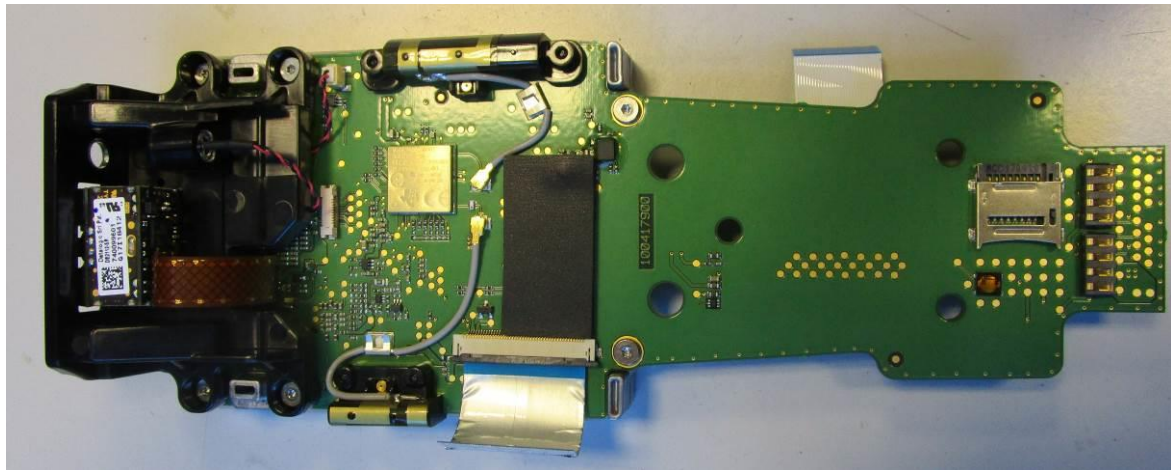
**Photograph 6: FALCON X4 – Internal PCB Overview-Bottom Side**



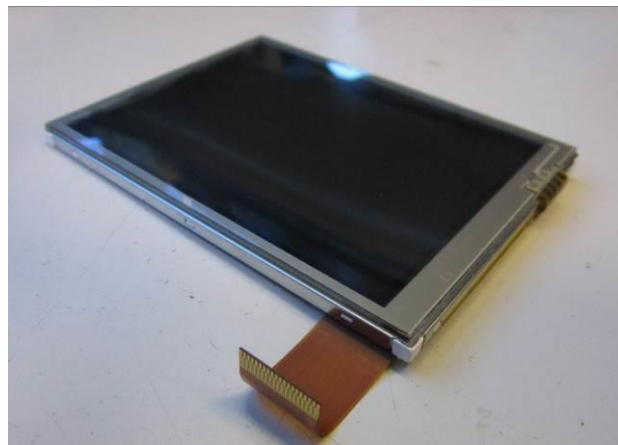
**Photograph 7: FALCON X4 – Keyboard ( Numeric / Alphanumeric) Bottom Side**



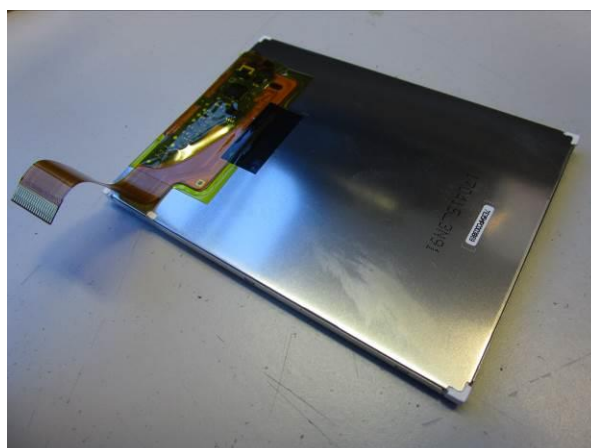
**Photograph 8: FALCON X4 –Mainboard Display Assembly Top Side**



**Photograph 9: FALCON X4 –Mainboard Assembly Bottom Side**

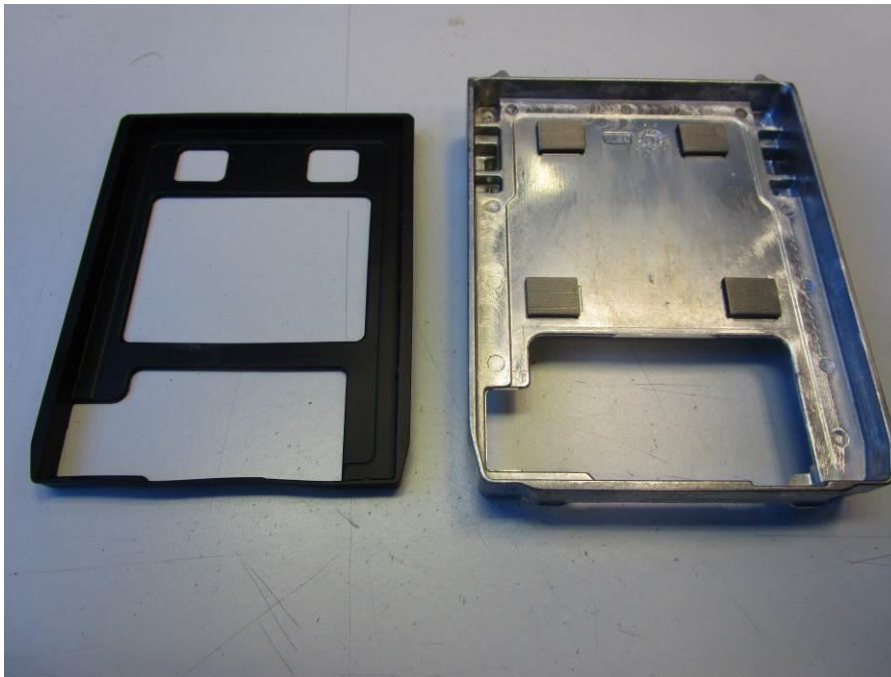


**Photograph 10: FALCON X4 –Display Assembly Top Side**

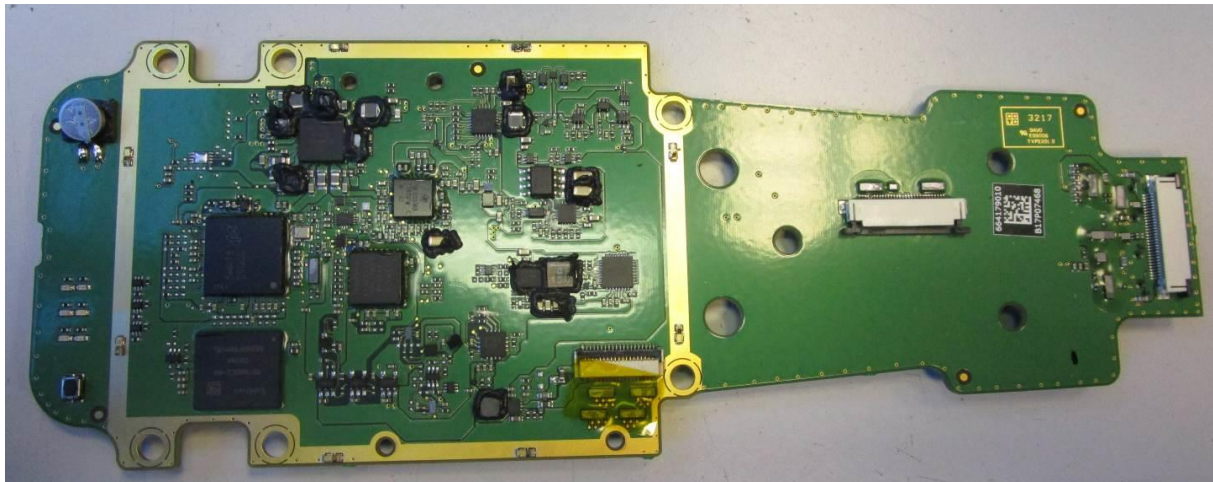


**Photograph 11: FALCON X4 –Display Assembly Back Side**



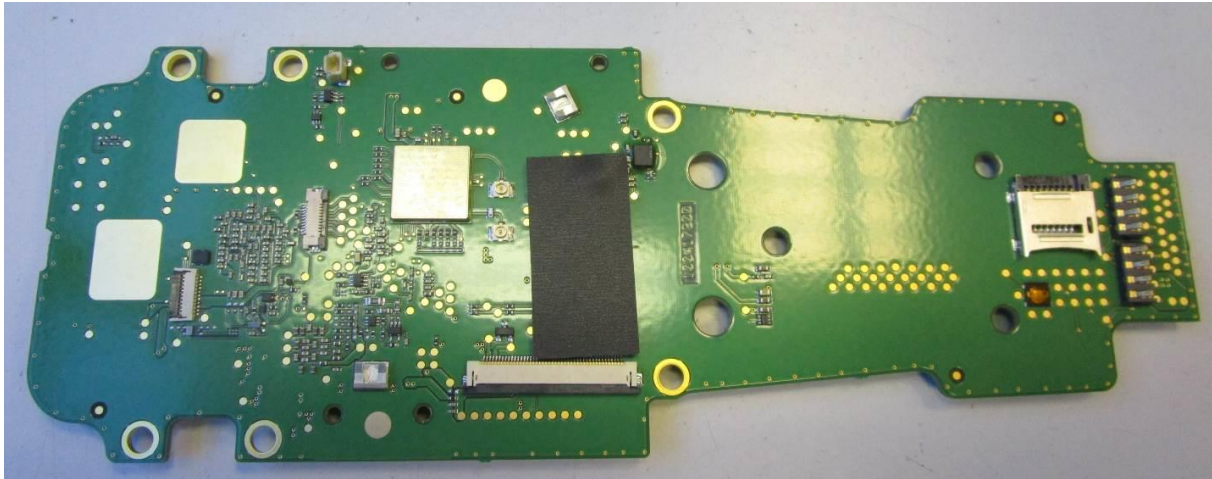


**Photograph 12: FALCON X4 -Display Frame & Cushion**

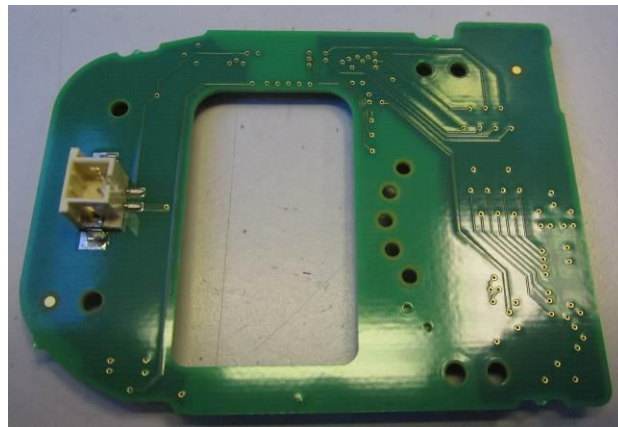


**Photograph 13: FALCON X4 -Mainboard Top Side**





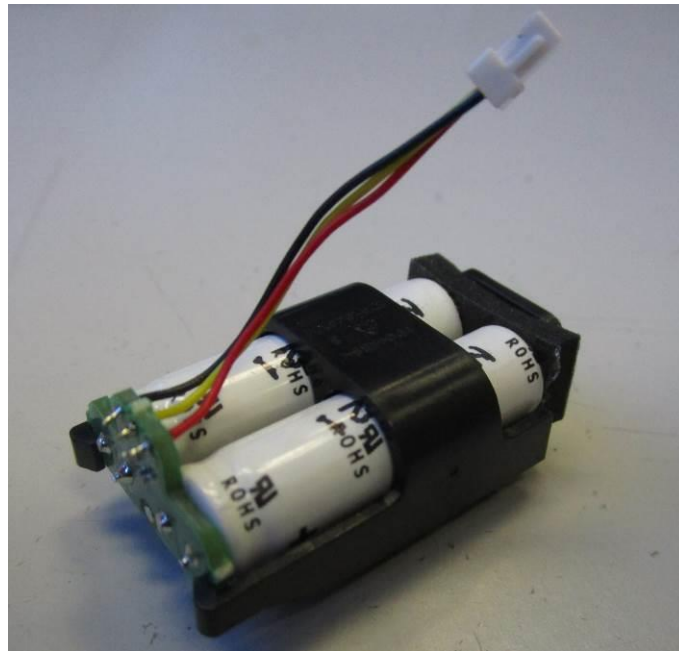
**Photograph 14: FALCON X4 –Mainboard Bottom Side**



**Photograph 15: FALCON X4 –Trigger Board Back side**



**Photograph 16: FALCON X4 –Trigger Board Front Side**



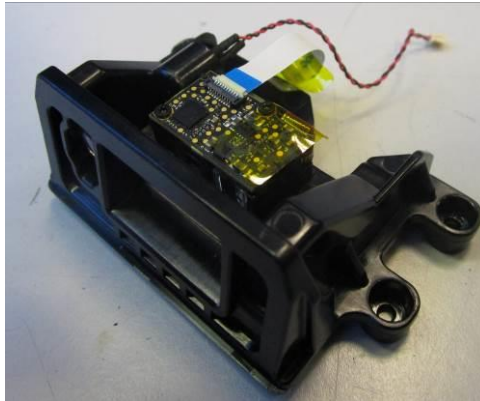
**Photograph 17: FALCON X4 –Supercap**



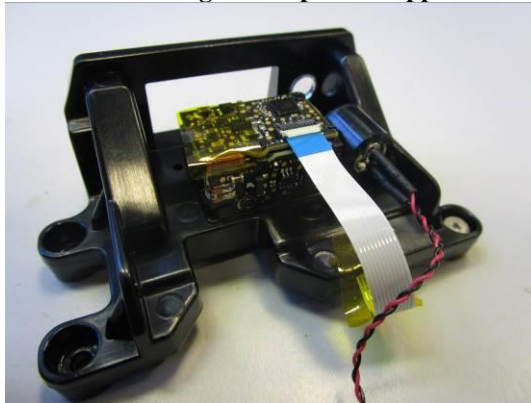
**Photograph 18: FALCON X4 – Barcode Reader Assembly-1D Imager**



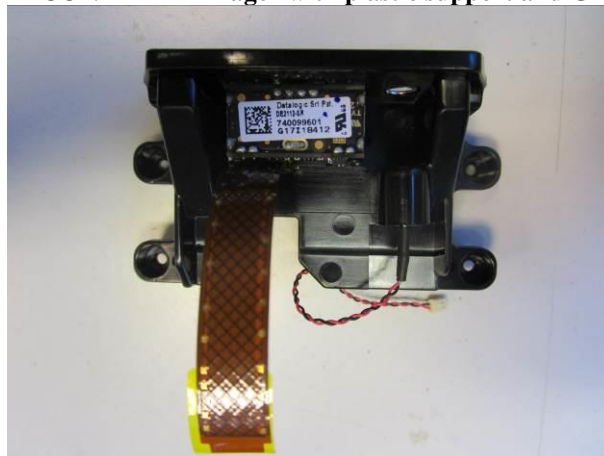
**Photograph 19: FALCON X4 – Barcode Reader Assembly-2D Imager**



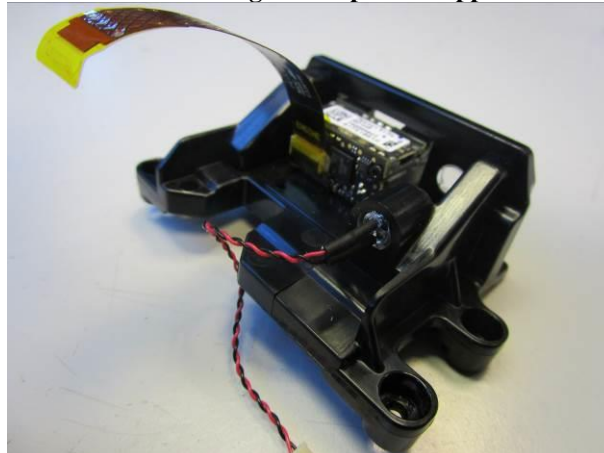
**Photograph 20: FALCON X4 -1D Imager with plastic support and Green Spot-Front Side**



**Photograph 21: FALCON X4 -1D Imager with plastic support and Green Spot-Rear Side**



**Photograph 22: FALCON X4 -2D Imager with plastic support and Green Spot-Top Side**



**Photograph 23: FALCON X4 -2D Imager with plastic support and Green Spot-Rear Side**



## 1.2. Equipment Under Test Radio Module +Antennas



Photograph 24: FALCON X4 –Integrated Radio Module- WL18MODGI



Photograph 25: FALCON X4 –Integrated Antennas ANT2 (on left) & ANT1 (on right)