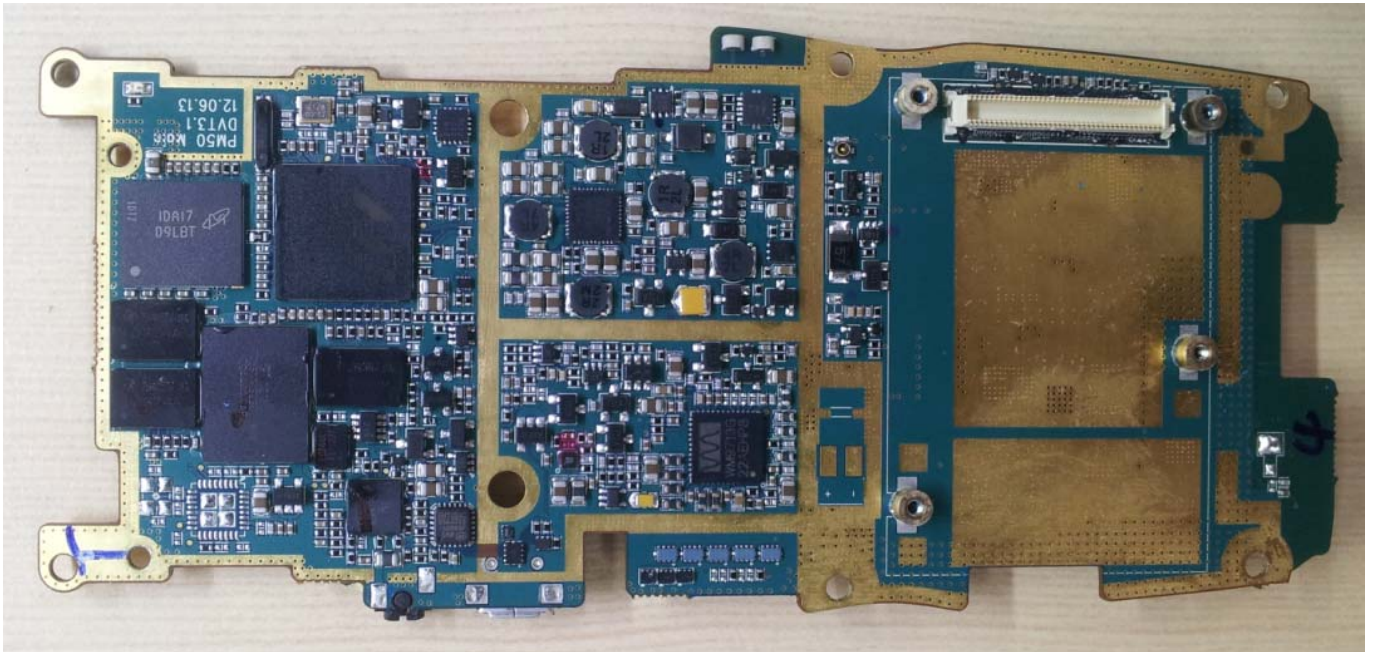
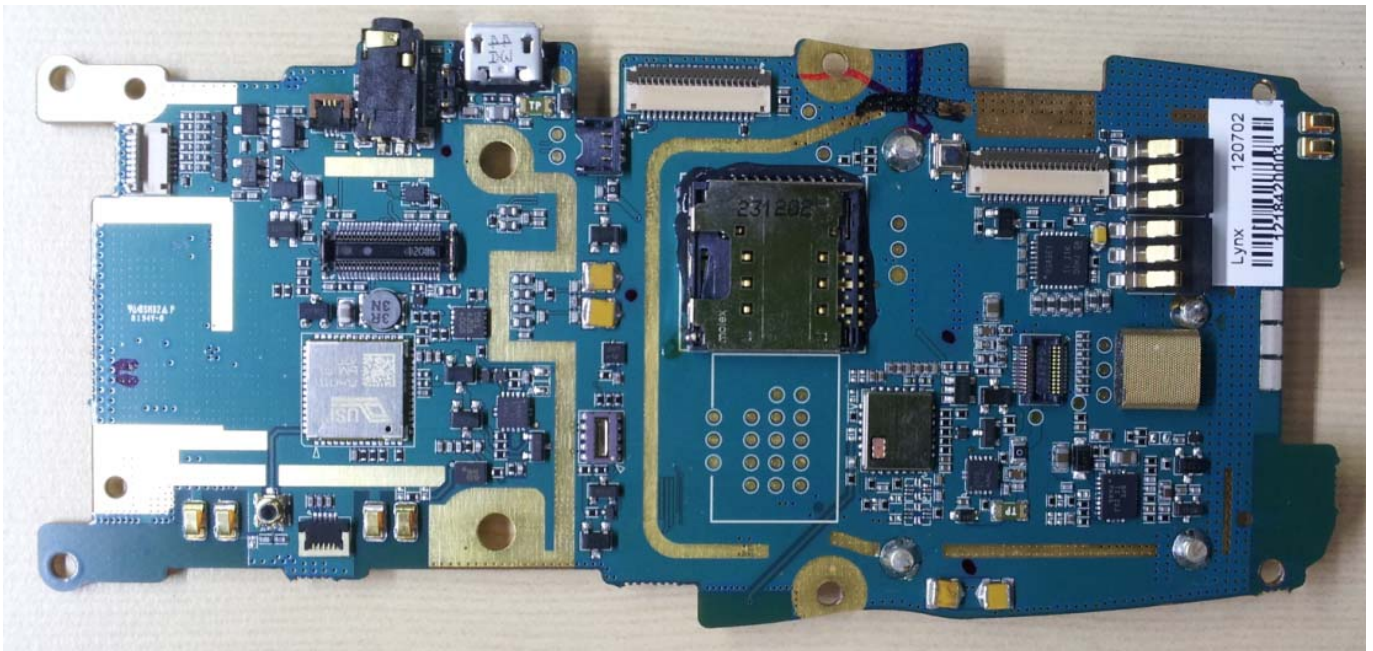


# Internal Photos

## 1. Main PCB



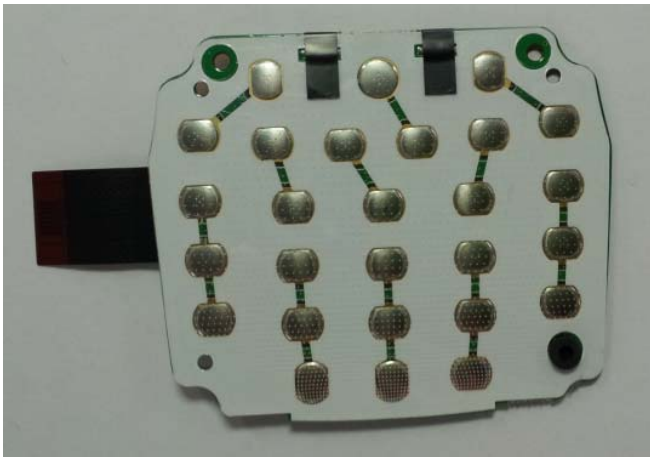
< Main PCB Front Side >



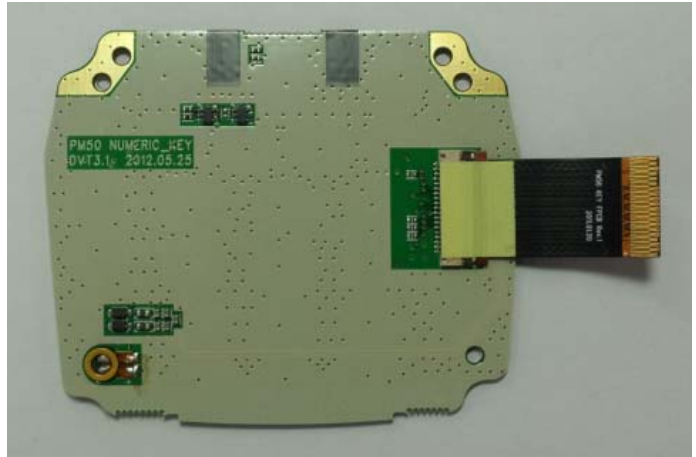
< Main PCB Rear Side >

# Internal Photos

## 2. Key PCB – Numeric Key

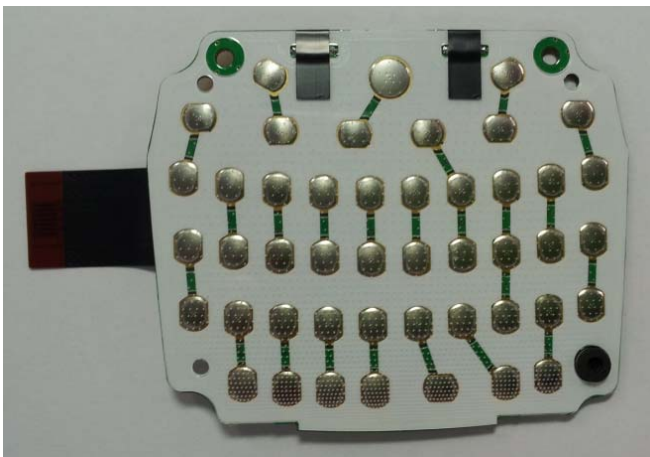


<Front Side>

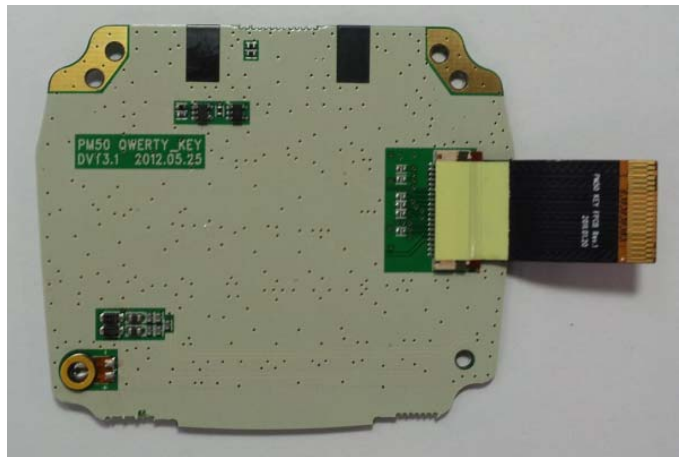


<Rear Side>

## 3. Key PCB – Qwerty Key

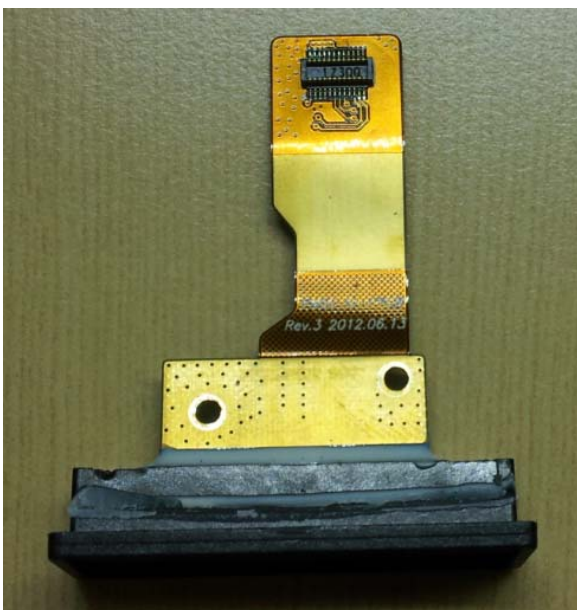


<Front Side>



<Rear Side>

## 4. IO PCB



<Front Side>

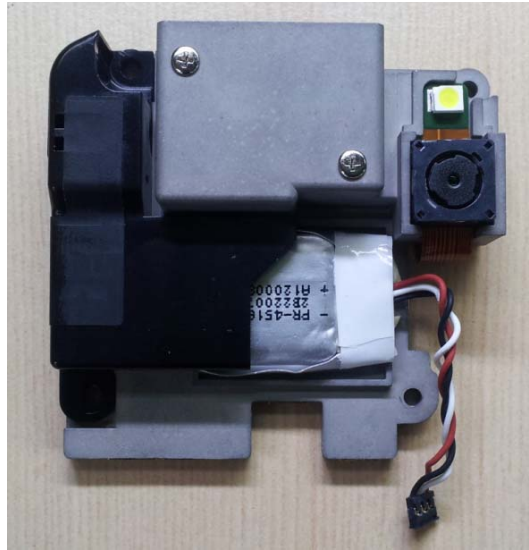


<Rear Side>



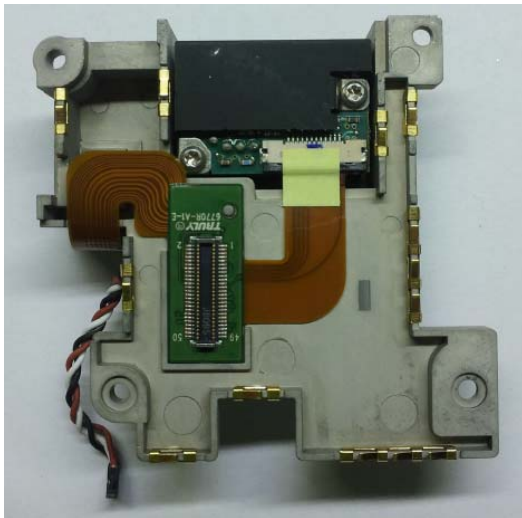
# Internal Photos

## 5. Scanner Bracket Module Ass'y



<Front Side>

1D Scanner & Camera



2D Scanner & Camera



<Rear Side>