

HAC_E_Dipole_835

DUT: HAC-Dipole 835 MHz

Communication System: CW; Frequency: 835 MHz; Duty Cycle: 1:1
 Medium: Air Medium parameters used: $\sigma = 0$ S/m, $\epsilon_r = 1$; $\rho = 0$ kg/m³
 Ambient Temperature : 23.4 °C

DASY5 Configuration:

- Probe: EF3DV3 - SN4047; ConvF(1, 1, 1) @ 835 MHz; Calibrated: 2019/1/30
- Sensor-Surface: (Fix Surface)
- Electronics: DAE4 Sn699; Calibrated: 2019/1/3
- Phantom: HAC Test Arch with AMCC; Type: SD HAC P01 BA;
- Measurement SW: DASY52, Version 52.10 (2); SEMCAD X Version 14.6.12 (7470)

E Scan - measurement distance from the probe sensor center to CD835 = 10mm & 15mm/Hearing Aid Compatibility Test at 15mm distance (41x361x1): Interpolated grid: dx=0.5000 mm, dy=0.5000 mm

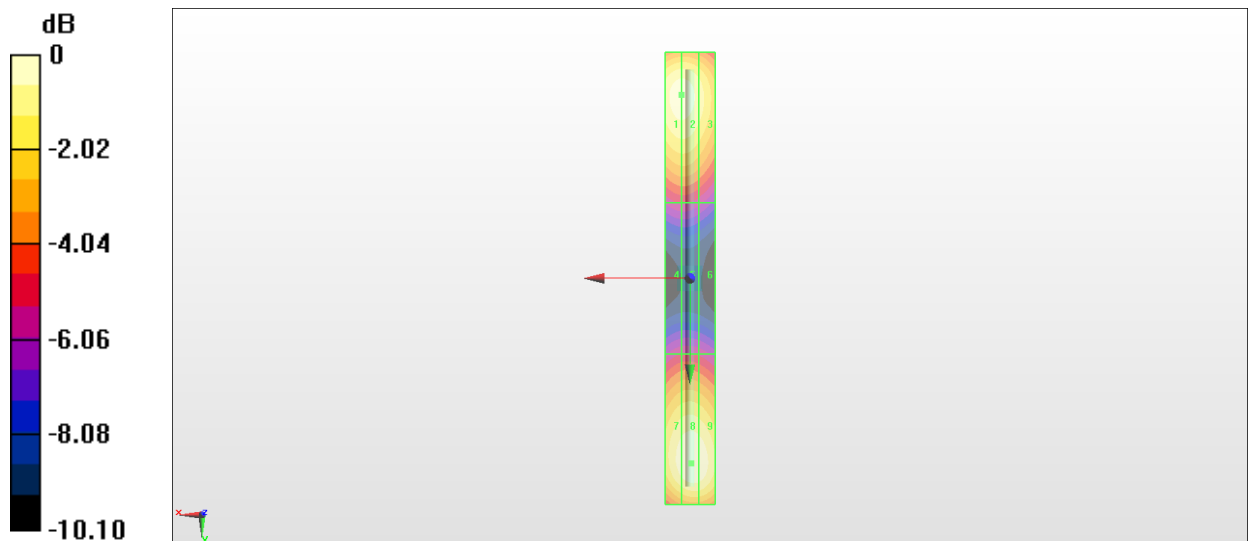
Device Reference Point: 0, 0, -6.3 mm
 Reference Value = 132.1 V/m; Power Drift = -0.05 dB
 PMR not calibrated. PMF = 1.000 is applied.
 E-field emissions = 112.6 V/m
 Average value of Total=(108.5+112.6) / 2 = 110.55 V/m

PMF scaled E-field

Grid 1 M4 108.2 V/m	Grid 2 M4 108.5 V/m	Grid 3 M4 102.1 V/m
Grid 4 M4 61.06 V/m	Grid 5 M4 61.11 V/m	Grid 6 M4 59.54 V/m
Grid 7 M4 108.4 V/m	Grid 8 M4 112.6 V/m	Grid 9 M4 110.9 V/m

Cursor:

Total = 112.6 V/m
 E Category: M4
 Location: -0.5, 73.5, 9.7 mm



0 dB = 112.4 V/m = 41.02 dBV/m

HAC_E_Dipole_1880

DUT: HAC Dipole 1880 MHz

Communication System: CW; Frequency: 1880 MHz; Duty Cycle: 1:1

Medium: Air Medium parameters used: $\sigma = 0 \text{ S/m}$, $\epsilon_r = 1$; $\rho = 0 \text{ kg/m}^3$

Ambient Temperature : 23.4 °C

DASY5 Configuration:

- Probe: EF3DV3 - SN4047; ConvF(1, 1, 1) @ 1880 MHz; Calibrated: 2019/1/30
- Sensor-Surface: (Fix Surface)
- Electronics: DAE4 Sn699; Calibrated: 2019/1/3
- Phantom: HAC Test Arch with AMCC; Type: SD HAC P01 BA;
- Measurement SW: DASY52, Version 52.10 (2); SEMCAD X Version 14.6.12 (7470)

E Scan - measurement distance from the probe sensor center to CD1880 = 10mm & 15mm/Hearing Aid Compatibility Test at 15mm distance (41x181x1): Interpolated grid: dx=0.5000 mm, dy=0.5000 mm

Device Reference Point: 0, 0, -6.3 mm

Reference Value = 166.4 V/m; Power Drift = -0.08 dB

PMR not calibrated. PMF = 1.000 is applied.

E-field emissions = 90.17 V/m

Average value of Total=(86.65+90.17) / 2 = 88.41 V/m

PMF scaled E-field

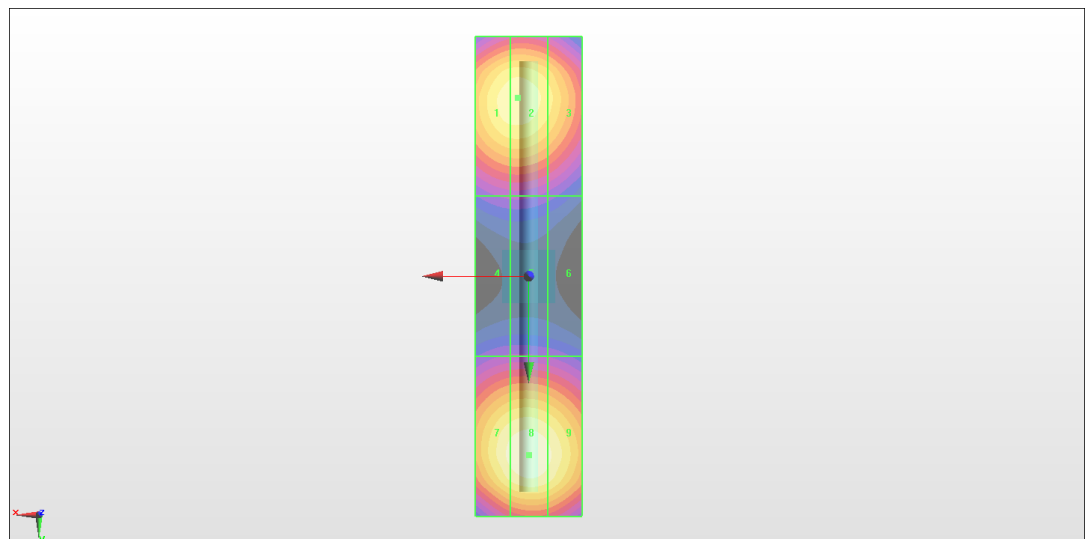
Grid 1 M3 86.40 V/m	Grid 2 M3 86.65 V/m	Grid 3 M3 82.90 V/m
Grid 4 M3 64.86 V/m	Grid 5 M3 64.96 V/m	Grid 6 M3 64.11 V/m
Grid 7 M3 88.14 V/m	Grid 8 M3 90.17 V/m	Grid 9 M3 88.05 V/m

Cursor:

Total = 90.17 V/m

E Category: M3

Location: 0, 33.5, 9.7 mm



0 dB = 90.15 V/m = 39.10 dBV/m