

Annex 3: EUT Internal Photographs to
TEST REPORT
 No.: 2-20842790-15-11b

According to:
FCC Regulations
 Part 18.305
 Part 18.307

for

Datalogic ADC S.r.l.
JOYA TOUCH 3-SLOT CRADLE

FCC-ID: U4GJNG3SD
 IC: 3862E-JNG3SD
 PMN: JOYA TOUCH 3-SLOT CRADLE
 HVIN: 3SD WPT







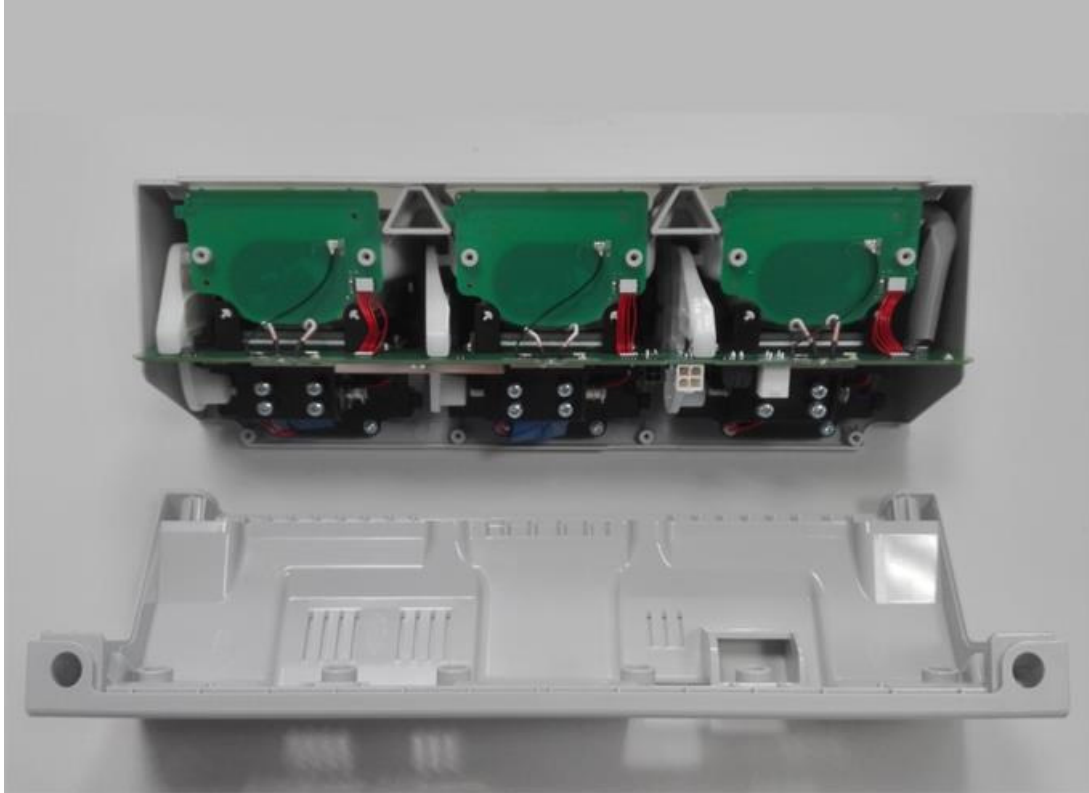
Laboratory Accreditation and Listings			
 Deutsche Akkreditierungsstelle D-PL-12047-01-01	 FEDERAL COMMUNICATIONS COMMISSION USA MRA US-EU 0003	 Industry Canada Reg. No.: 3462D-1 Reg. No.: 3462D-2 Reg. No.: 3462D-3	 Voluntary Controls for Electromagnetic Emissions Reg. No.: R-2666 C-2914, T-1967, G-301
 WiFi ALLIANCE AUTHORIZED RF LABORATORY	 ctia Authorized Test Lab Lab Code: 20011130-00		
accredited according to DIN EN ISO/IEC 17025			
<p align="center"> CETECOM GmbH Laboratory Radio Communications & Electromagnetic Compatibility Im Teelbruch 116 • 45219 Essen • Germany Registered in Essen, Germany, Reg. No.: HRB Essen 8984 Tel.: + 49 (0) 20 54 / 95 19-954 • Fax: + 49 (0) 20 54 / 95 19-964 E-mail: info@cetecom.com • Internet: www.cetecom.com </p>			

Table of contents

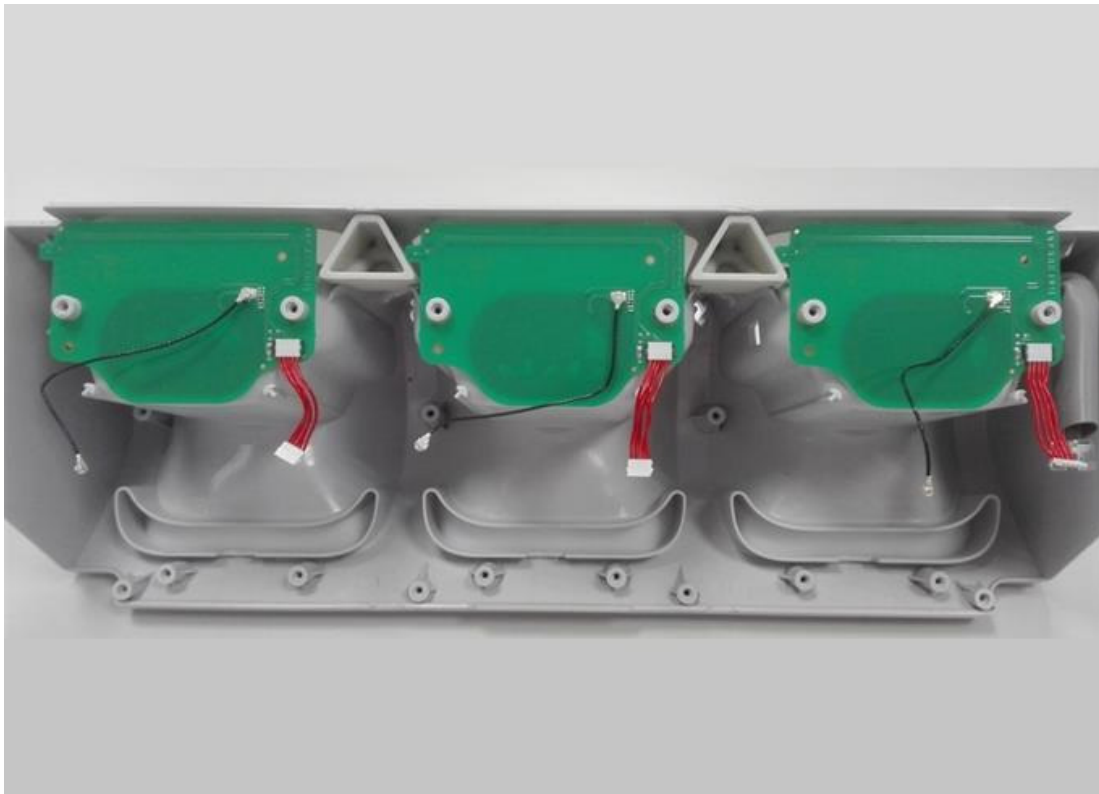
1. INTERNAL PHOTOGRAPHS OF EUT:	3
1.1. EUT Photographs.....	3

1. Internal photographs of EUT:

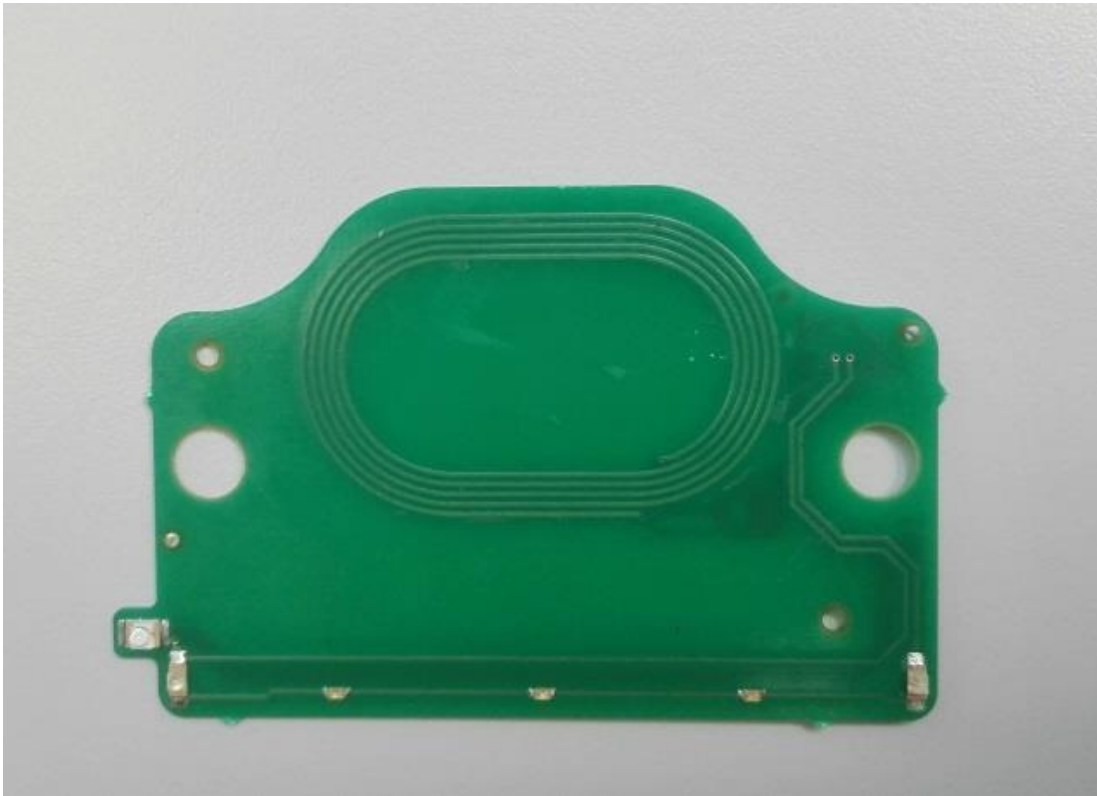
1.1. EUT Photographs



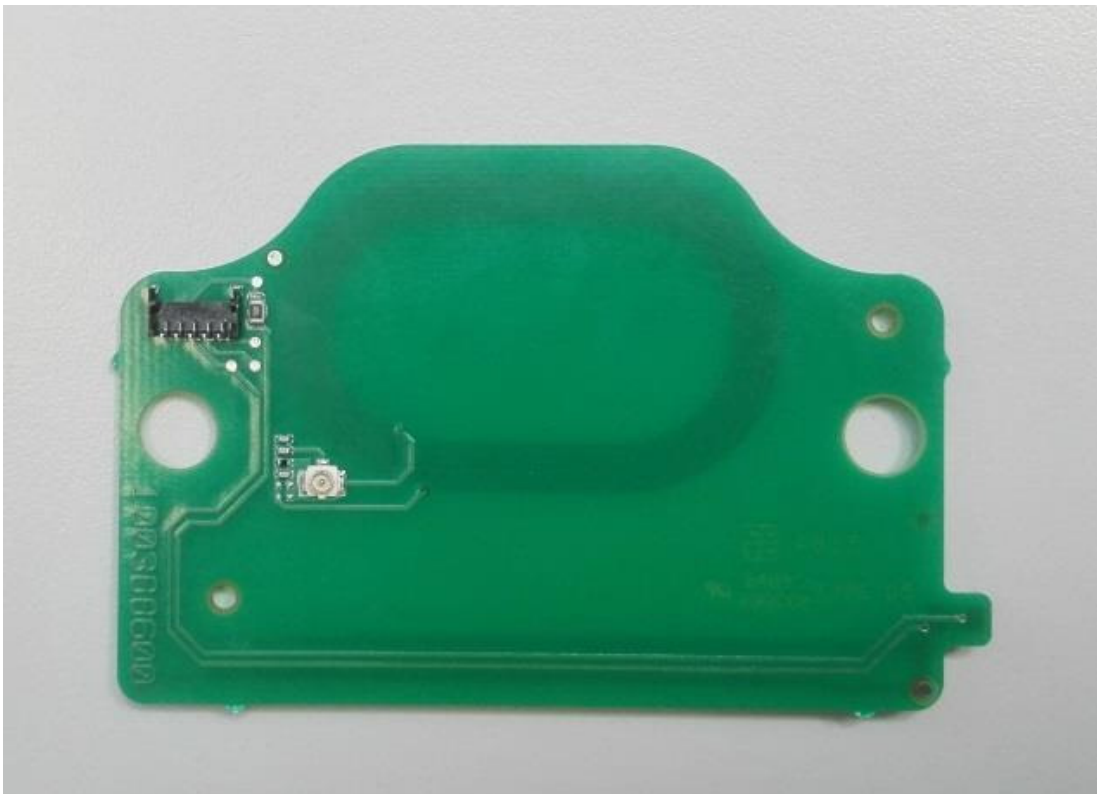
Photograph 1: EUT A Internal Overview



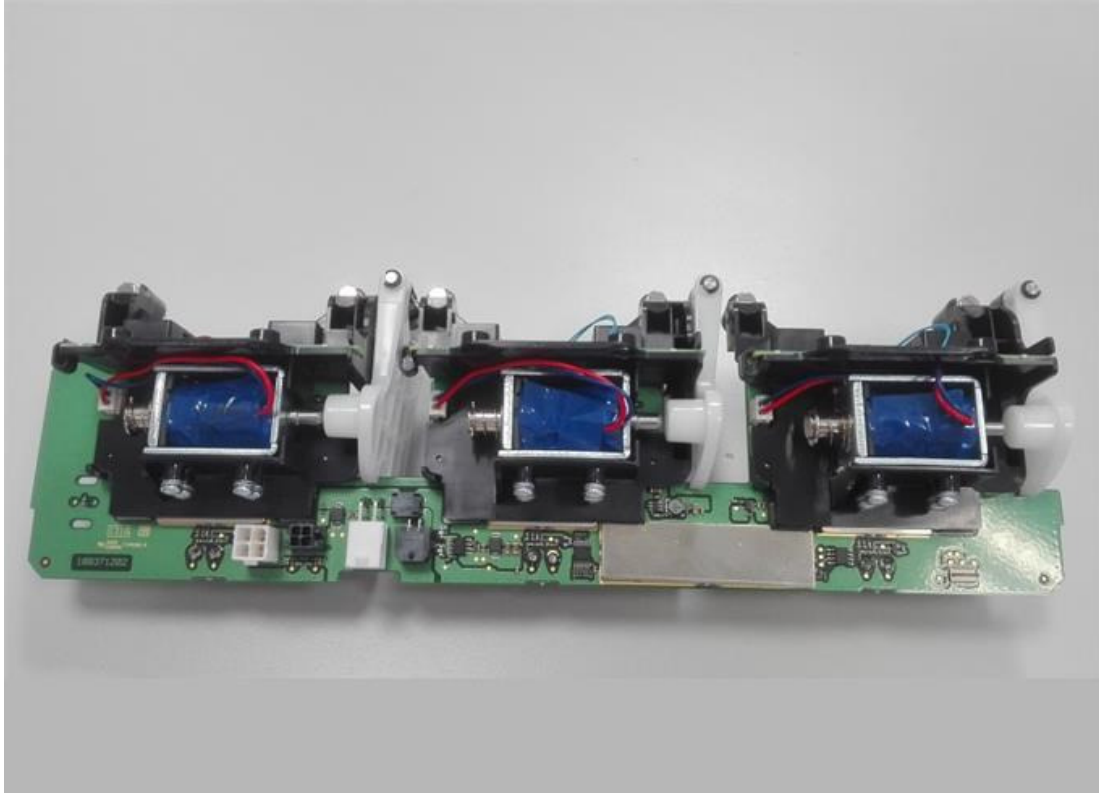
Photograph 2: EUT A Upper housing with NFC Antennas



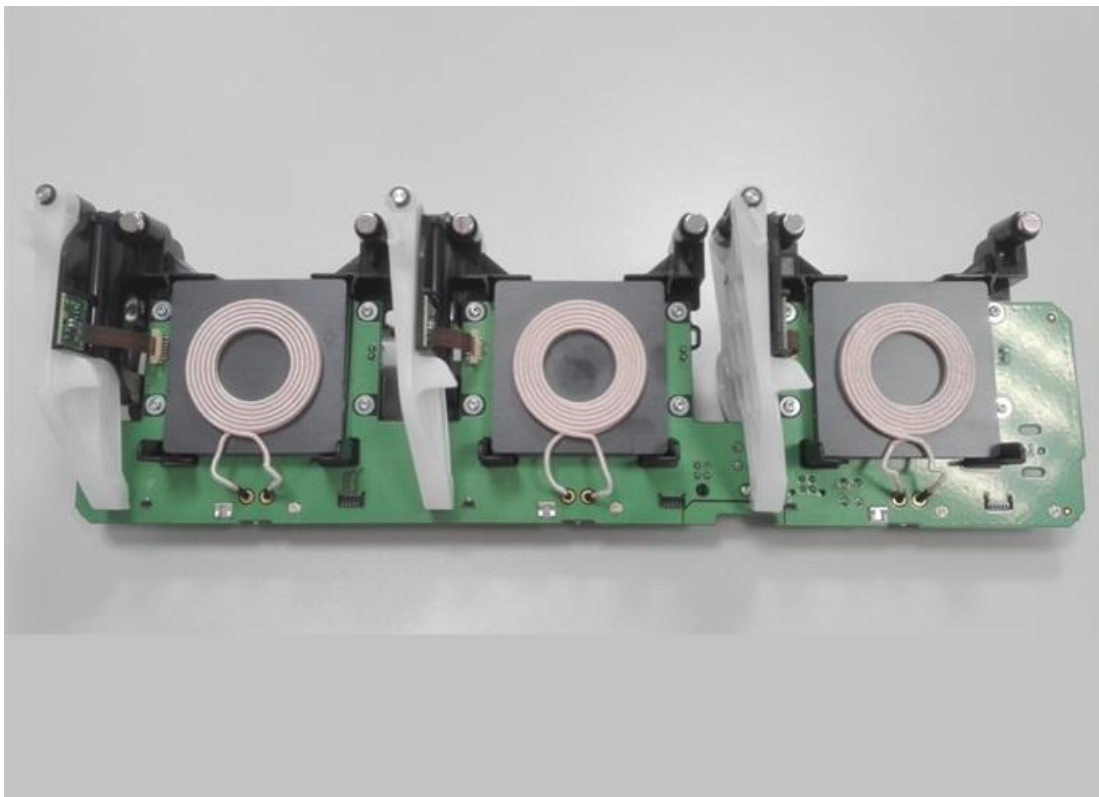
Photograph 3: EUT A NFC Tx Antenna Upper side



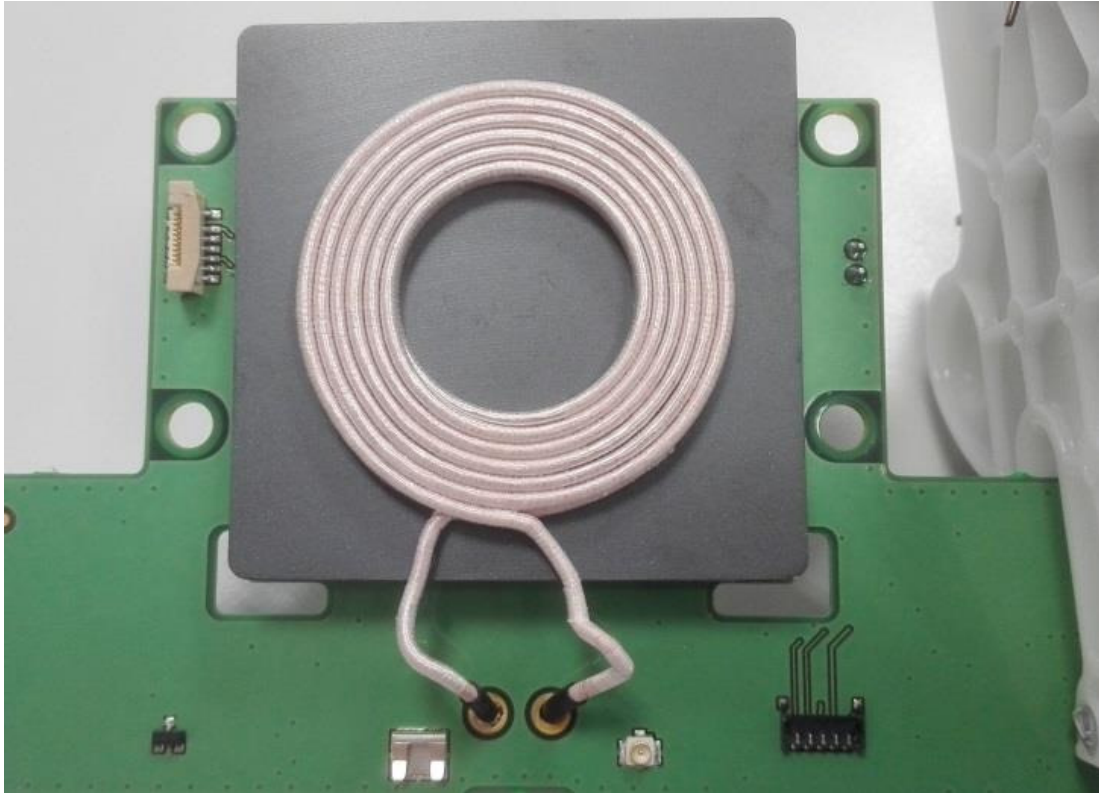
Photograph 4: EUTA NFC Tx Antenna Lower side



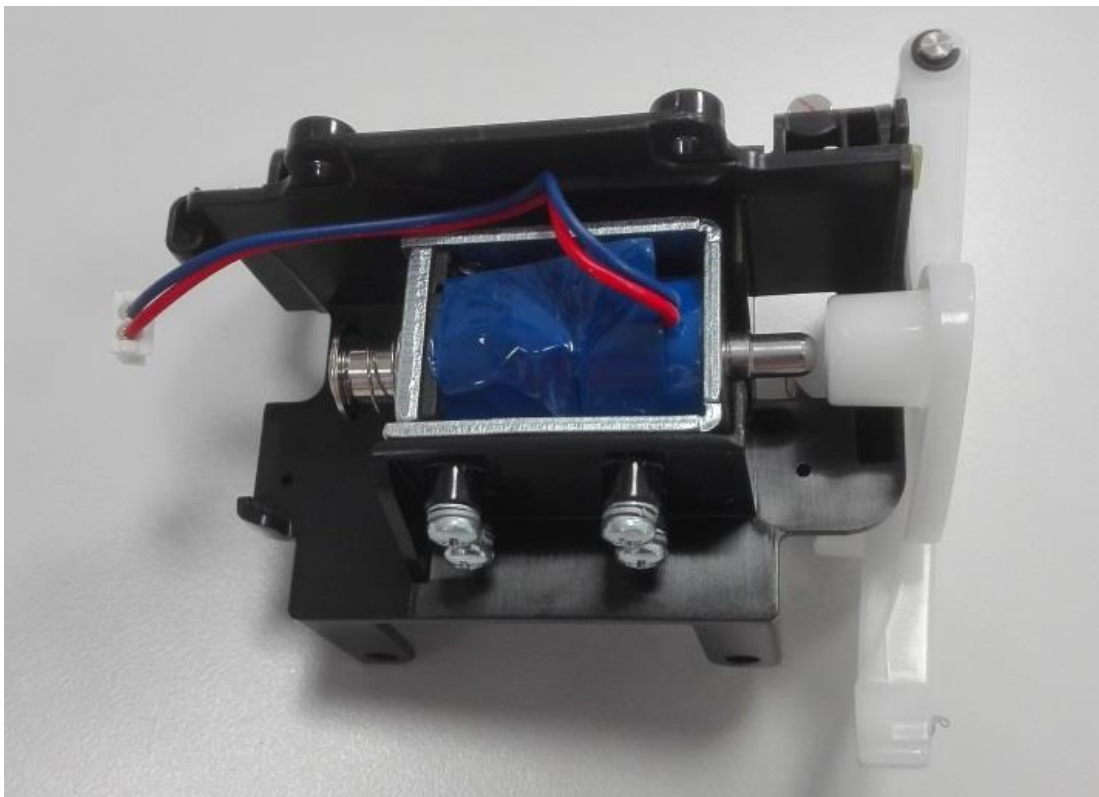
Photograph 5:EUT A Internal Assembly Upper side



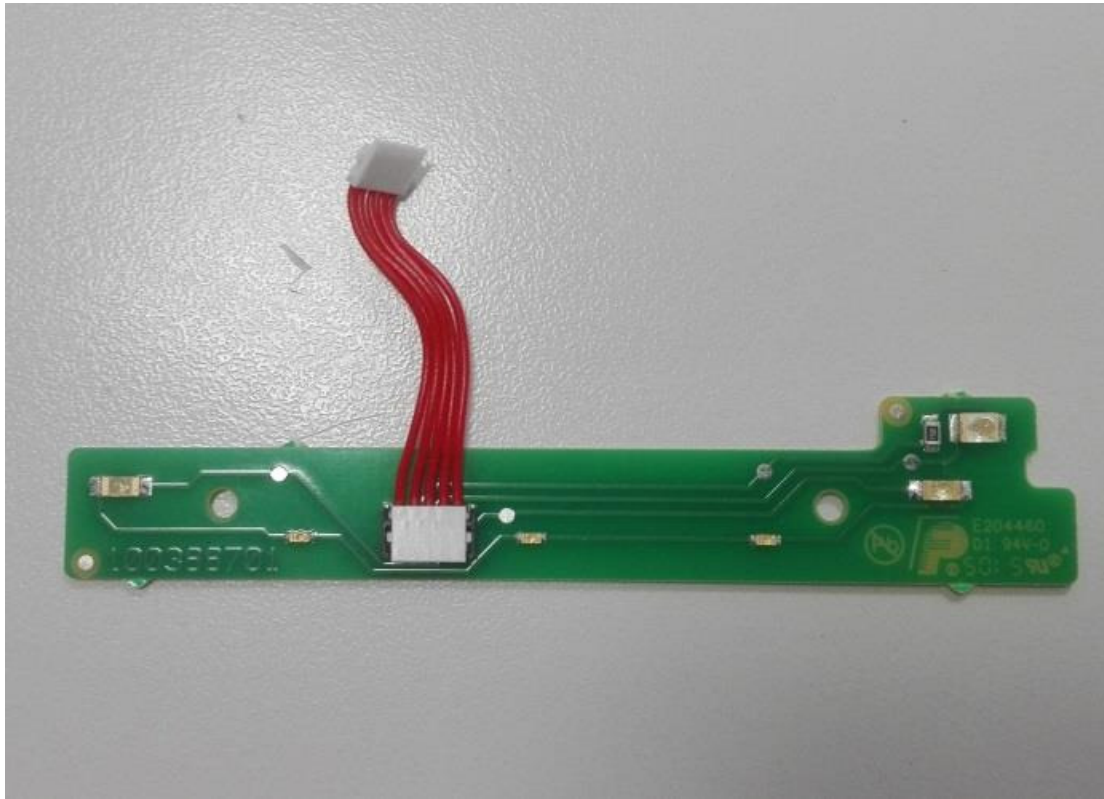
Photograph 6:EUT A Internal Assembly Lower side (3 Primary Inductive TX coils)



Photograph 7: EUT A WPT Primary Inductive TX coil (RWC5353FE120-510)



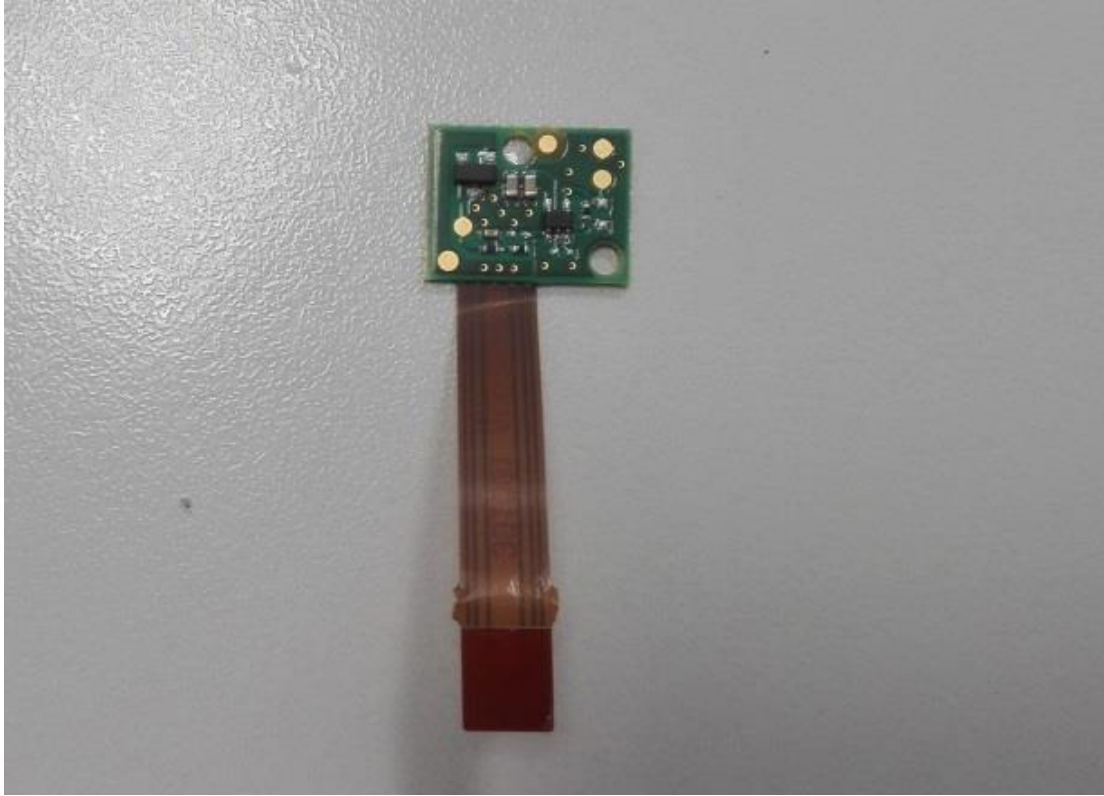
Photograph 8: EUT A Solenoid support



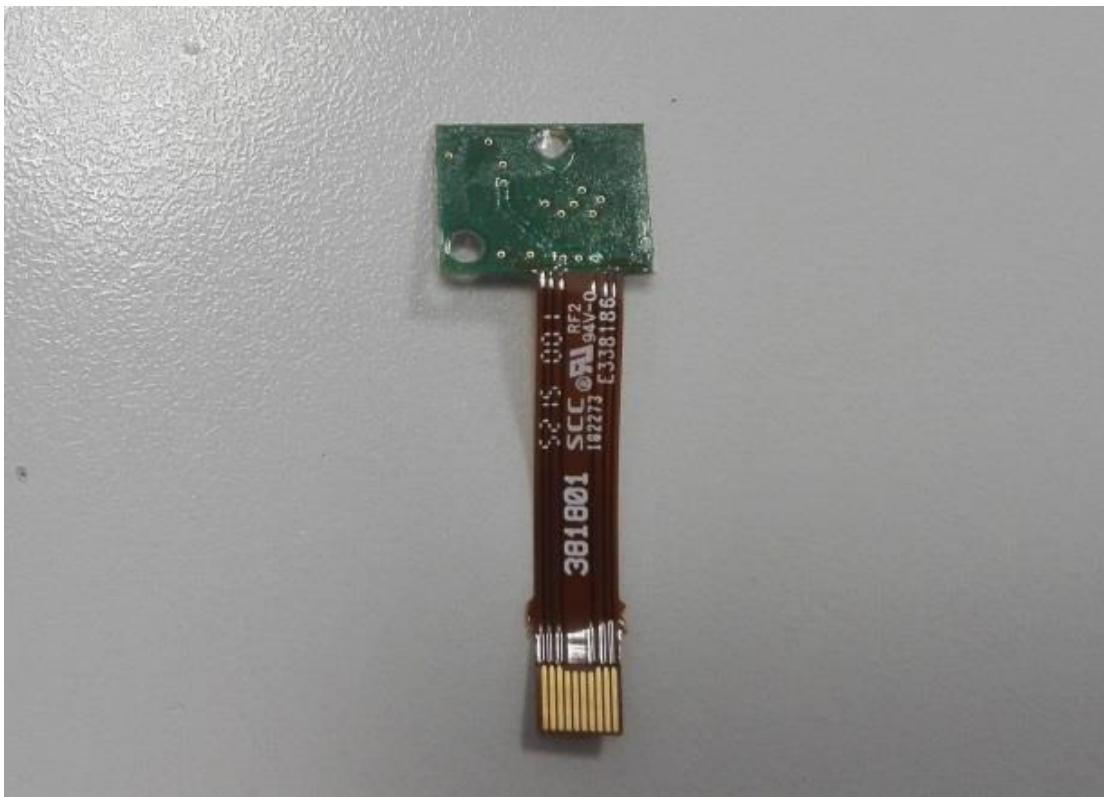
Photograph 9:EUT A LED Board Upper side



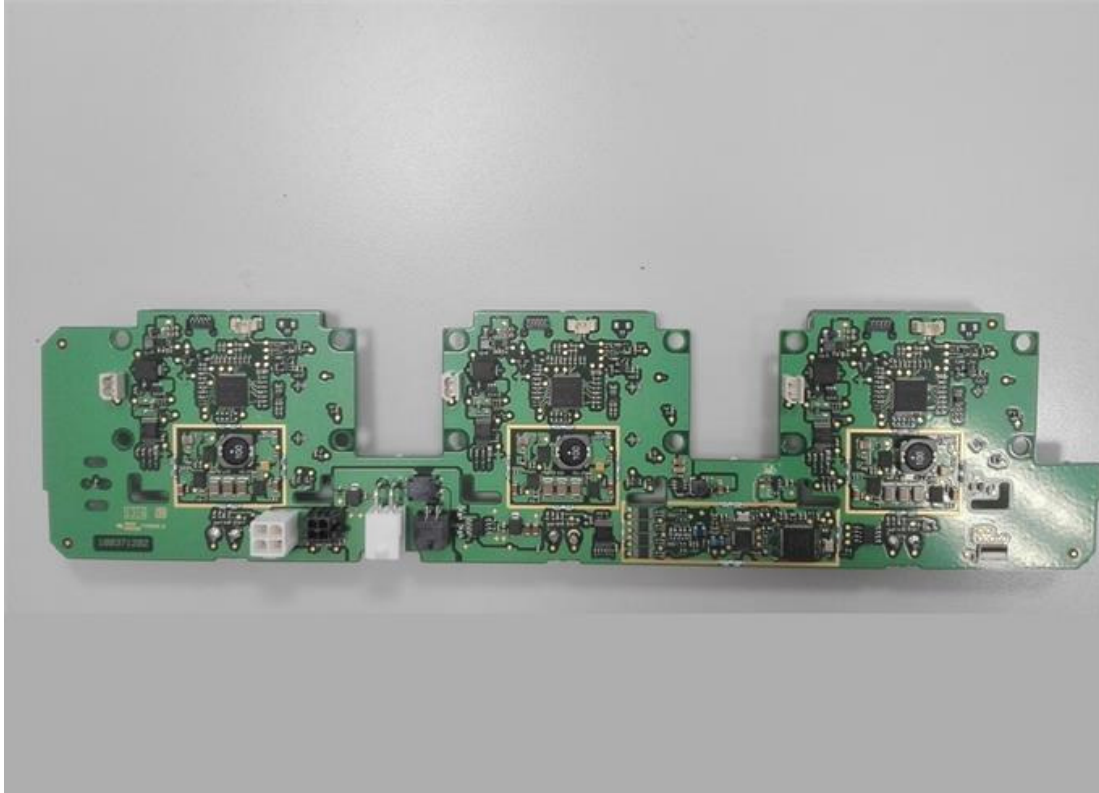
Photograph 10:EUT A LED Board Upper side



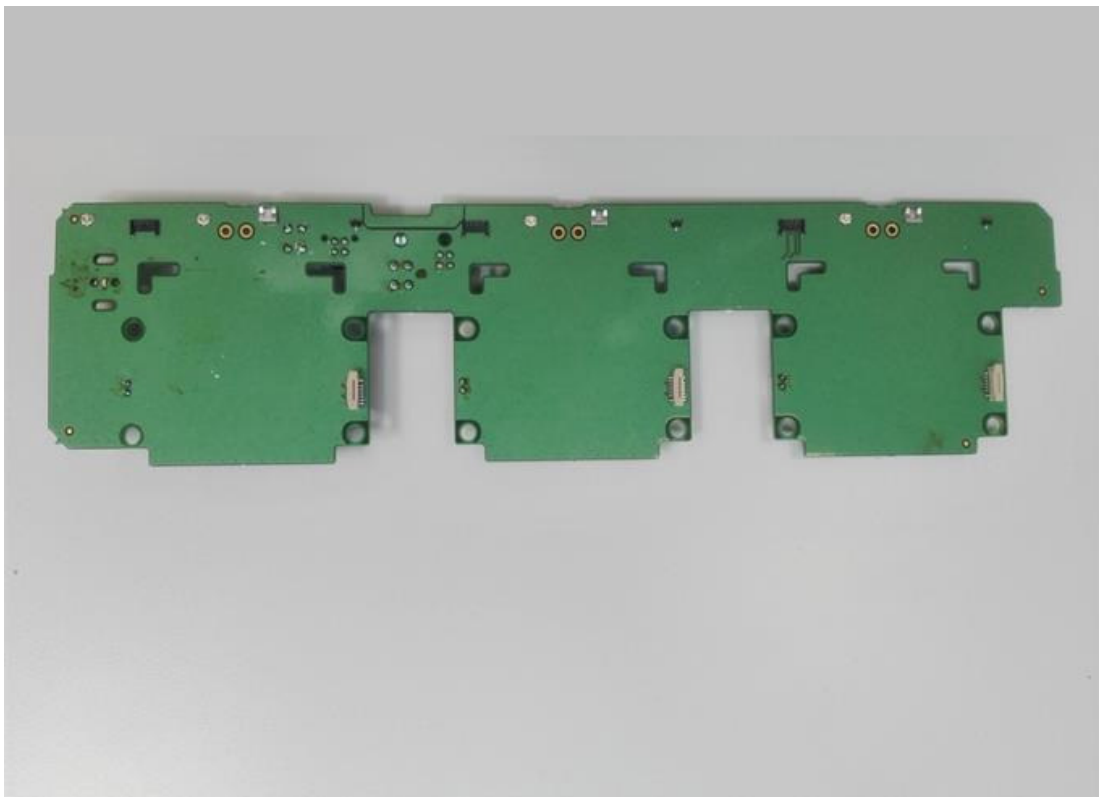
Photograph 11:EUT A Sensor Board Upper side



Photograph 12:EUT A Sensor Board Lower side



Photograph 13:EUT A Mainboard Upper side



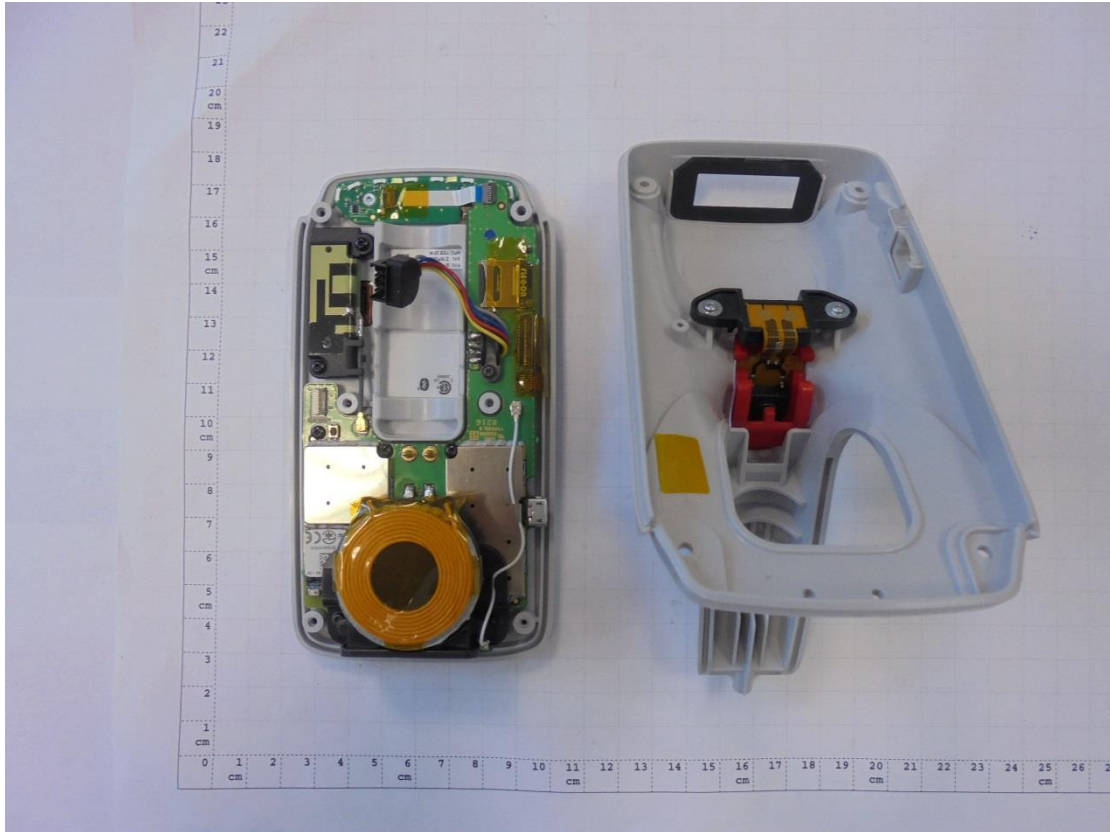
Photograph 14:EUT A Mainboard Lower side



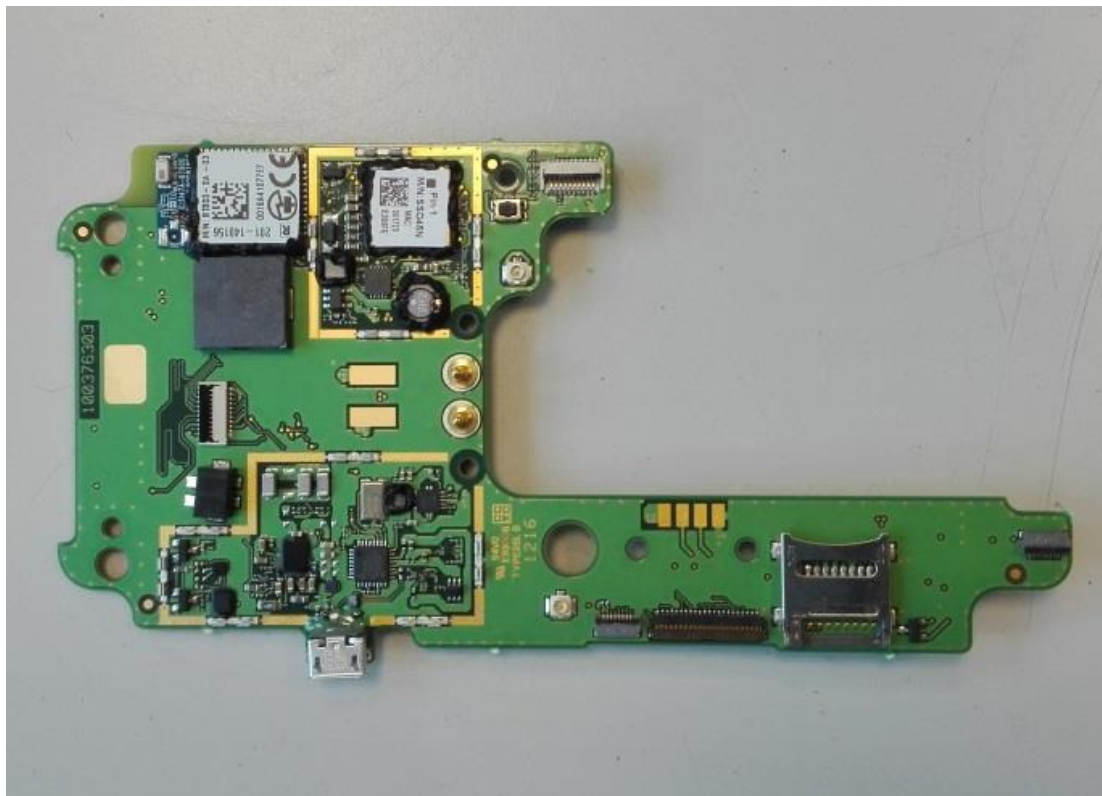
Photograph 15:EUT A Solenoid



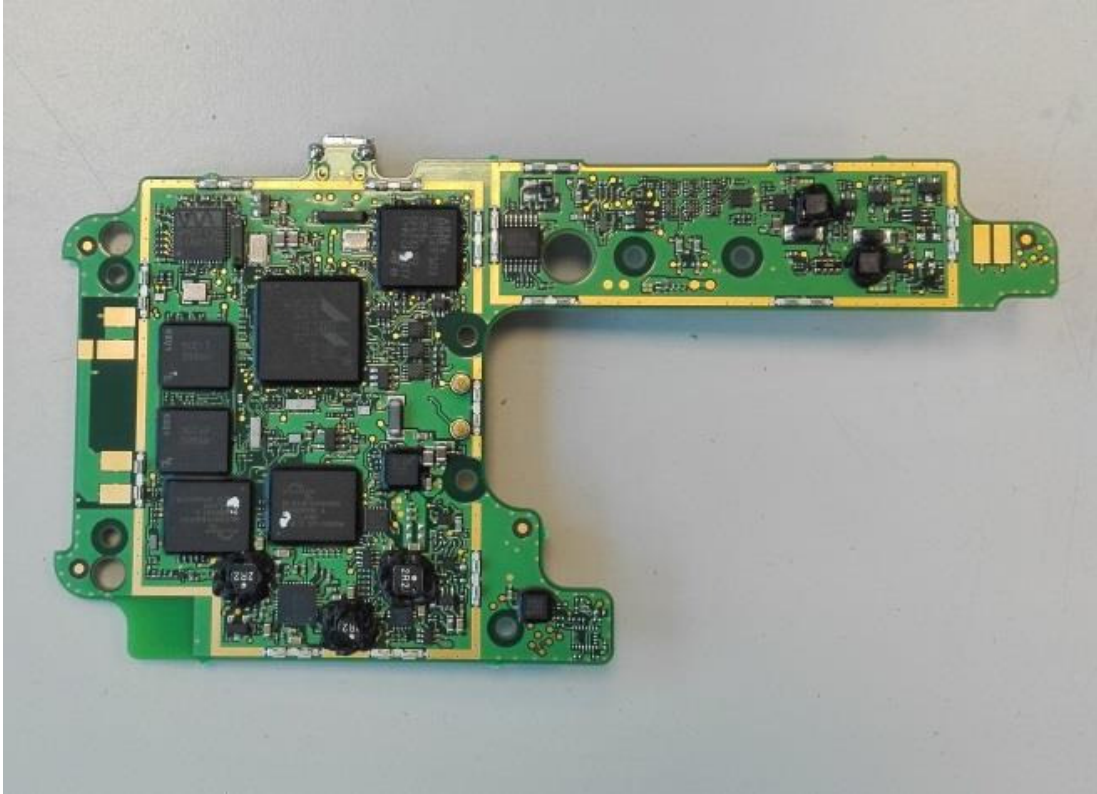
Photograph 16: AE1 Rear side



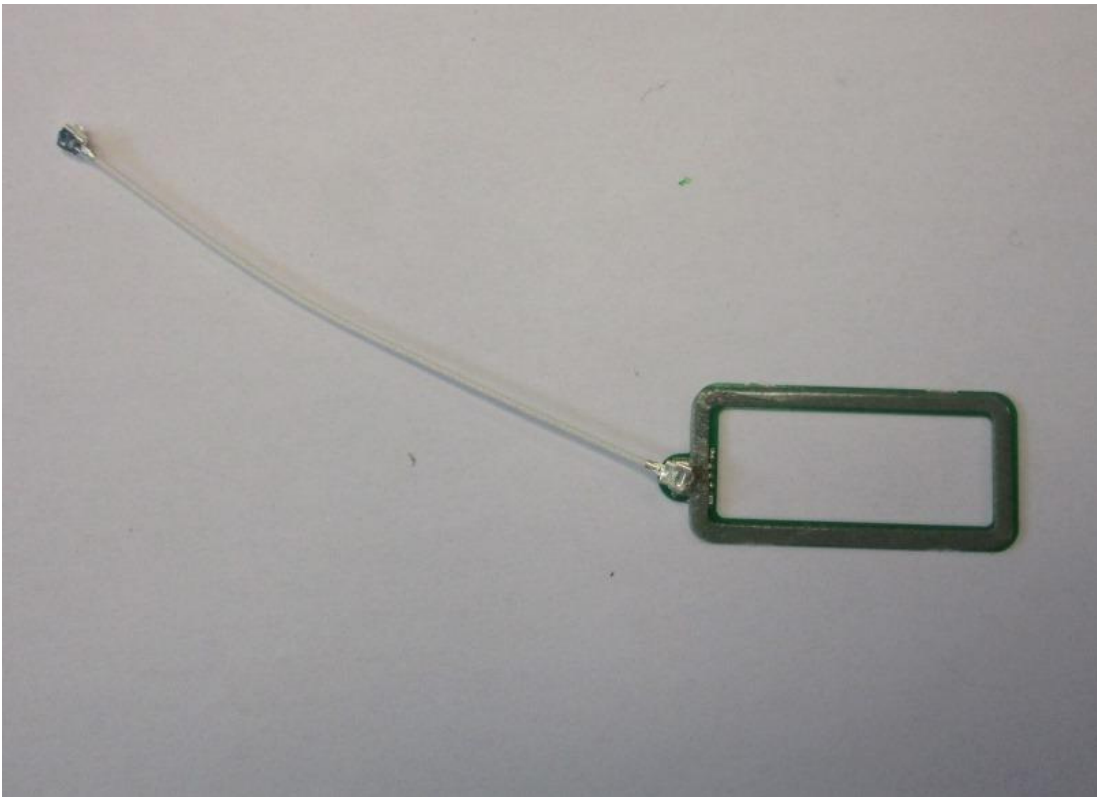
Photograph 17: AE2 / AE3 rear side with enclosure



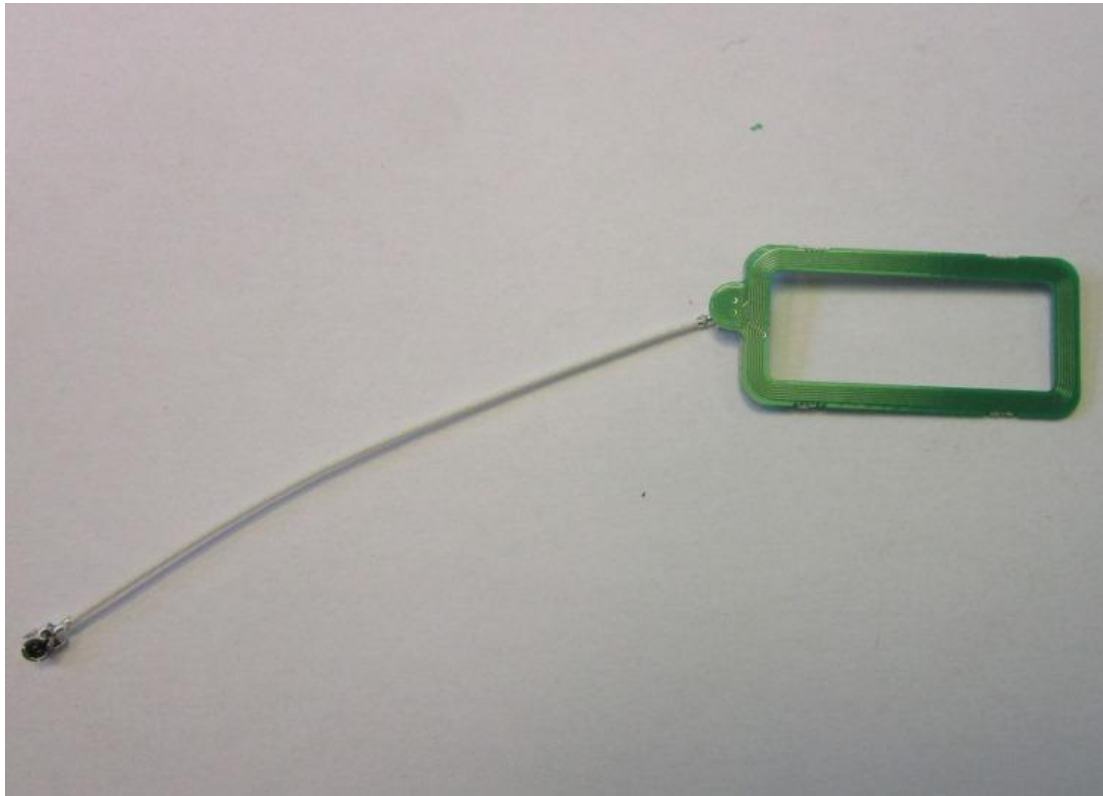
Photograph 18: AE1 / AE2 / AE3 Mainboard_top side



Photograph 19: AE1 /AE2/ AE3 Mainboard_bottom side



Photograph 20: AE1 /AE2/ AE3 NFC Passive tag_upper side



Photograph 21: AE1 /AE2/ AE3 NFC Passive tag_lower side