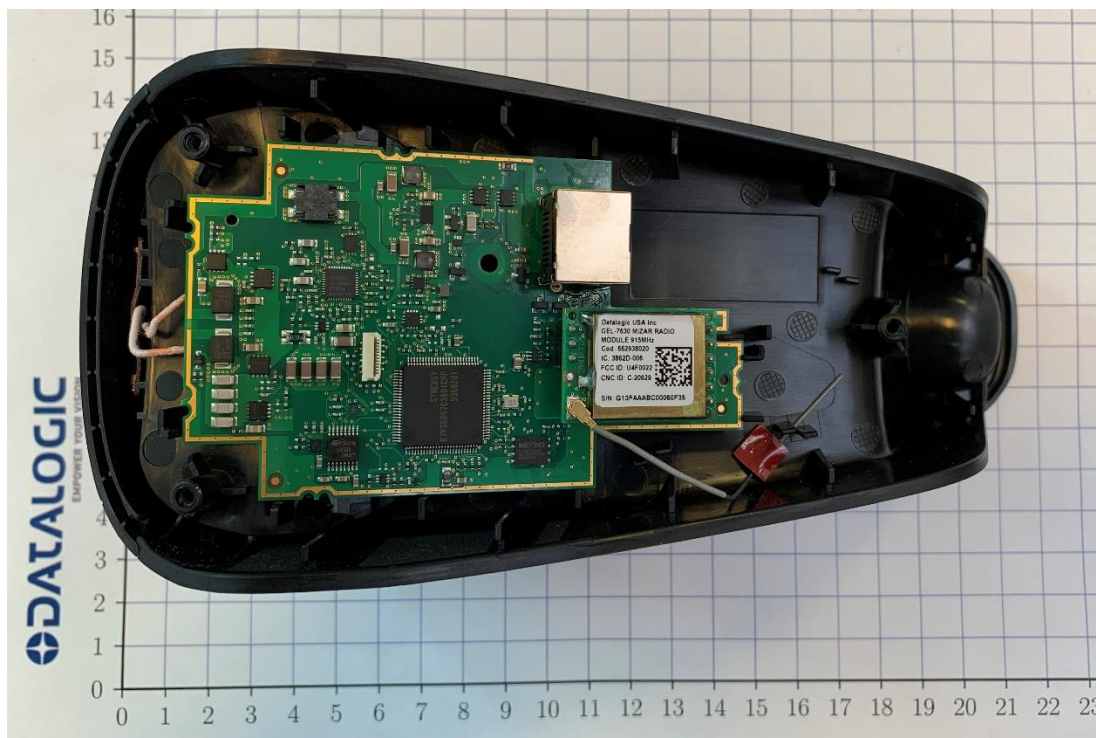


Product's Photos

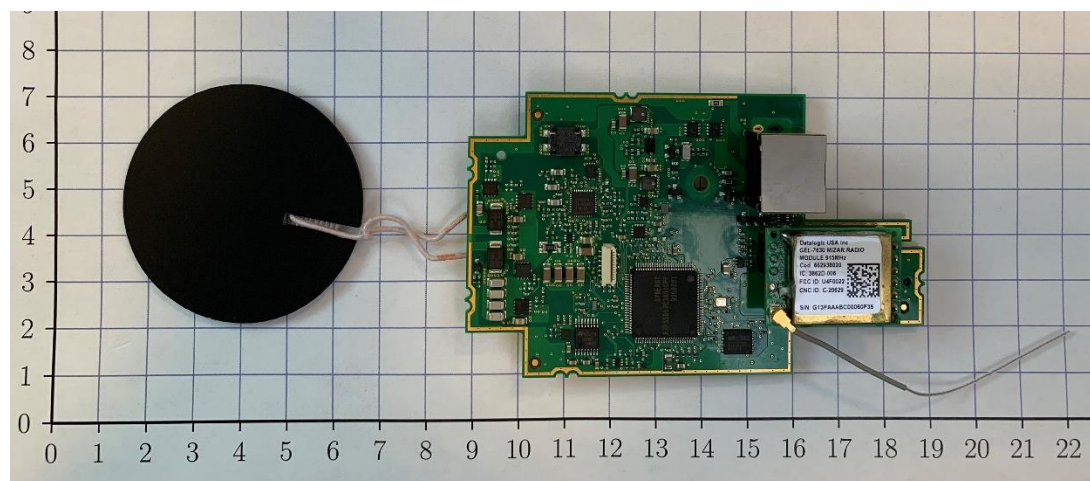
Product: GRYPHON™ GM4200 SERIES

1. WLC4190 Base charger

1.1. Internal



Bottom Side without lower enclosure WLC4190 910 MHz version



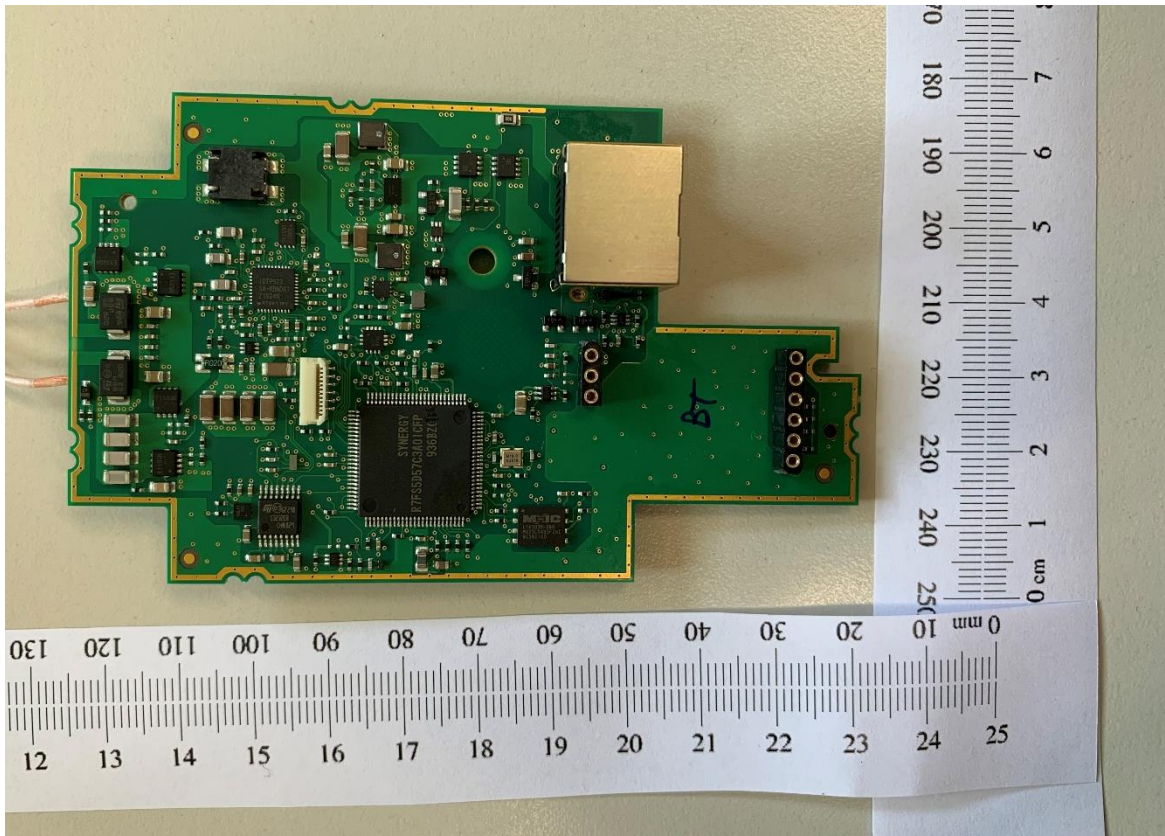
Internal assembly of WLC4190 910 MHz version

Datalogic S.r.l. Società con socio unico | Gruppo Datalogic | Direzione e Coordinamento Datalogic S.p.A.

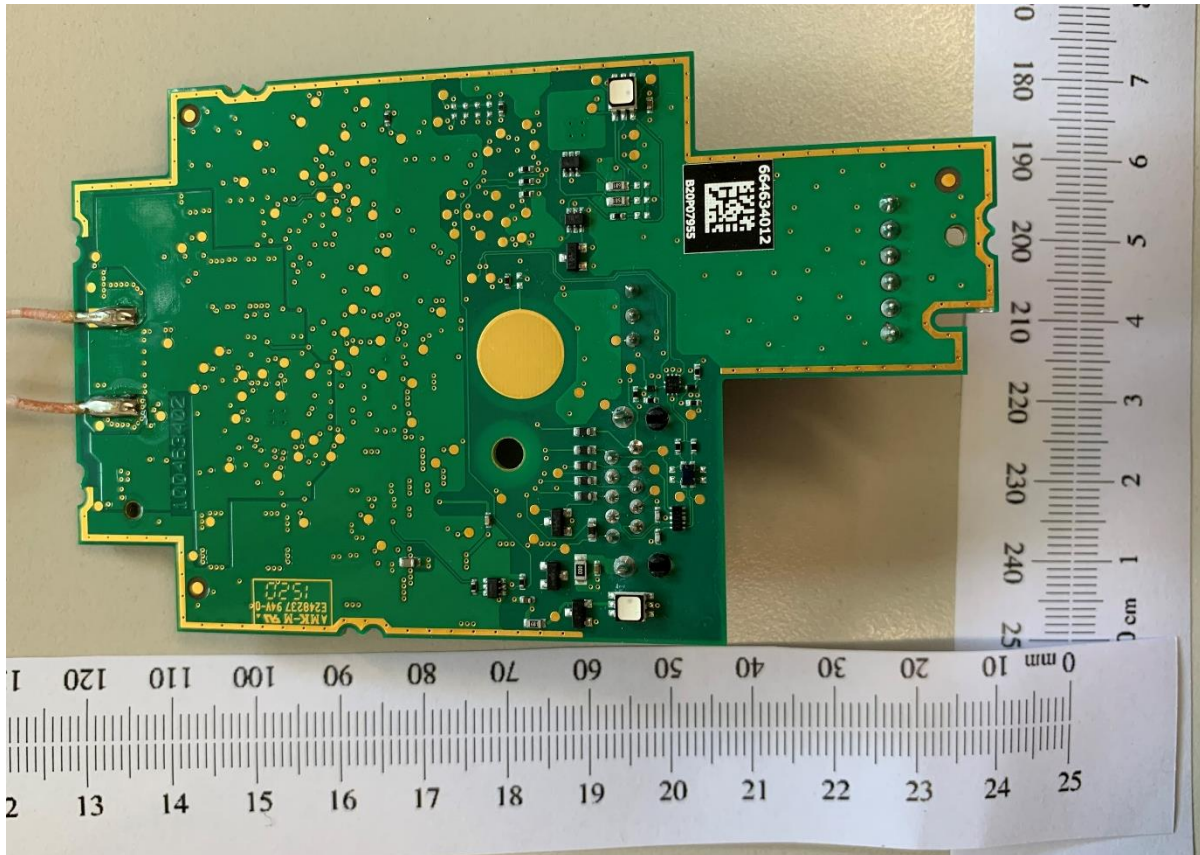
Sede legale e amministrativa: via San Vitalino, 13 | 40012, Lippo di Calderara di Reno | Bologna | Italy

Stabilimento: via Lavino 265 | 40050, Monte San Pietro | Bologna | Italy

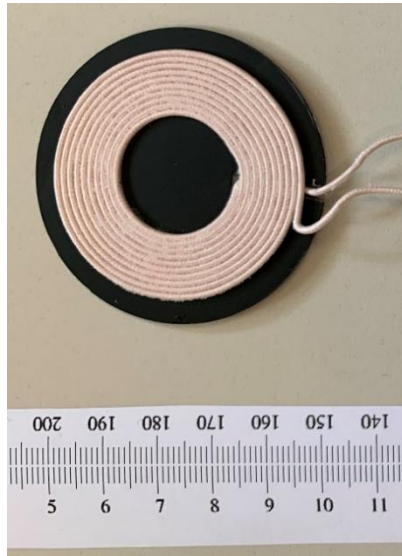
Tel. +39 051 3147011 | Fax. +39 051 3147288 | www.datalogic.com



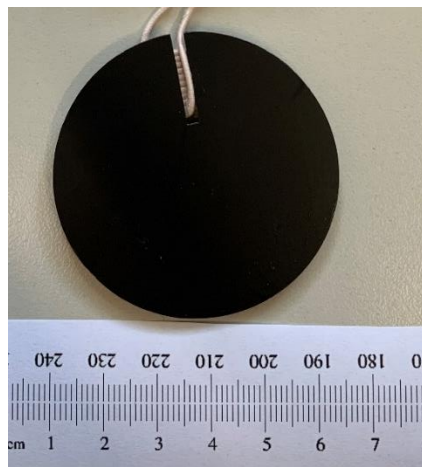
Main Board Side 1



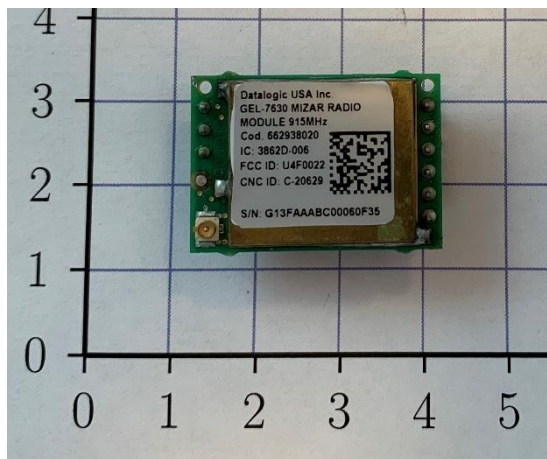
Main Board Side 2



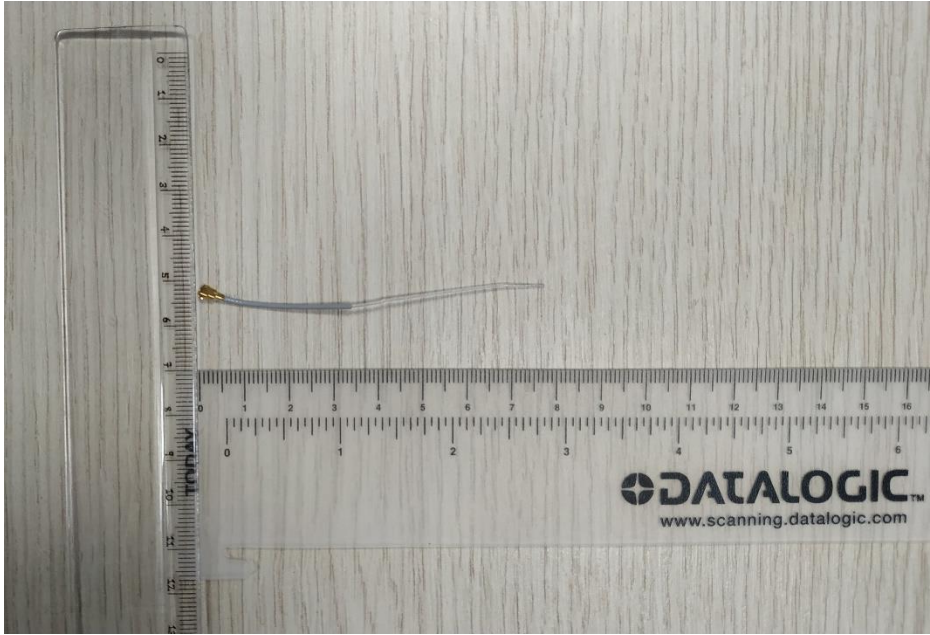
TX Coil side 1



TX Coil side 2



Radio Module with label



Antenna 910 MHz