



## BT-VRG-STD Module

### Installation Instructions Notice d'Installation

The aim of this document is to provide information on how to install BT-VRG-STD module into Datalogic products. The integration can be done only by authorized Datalogic personnel.

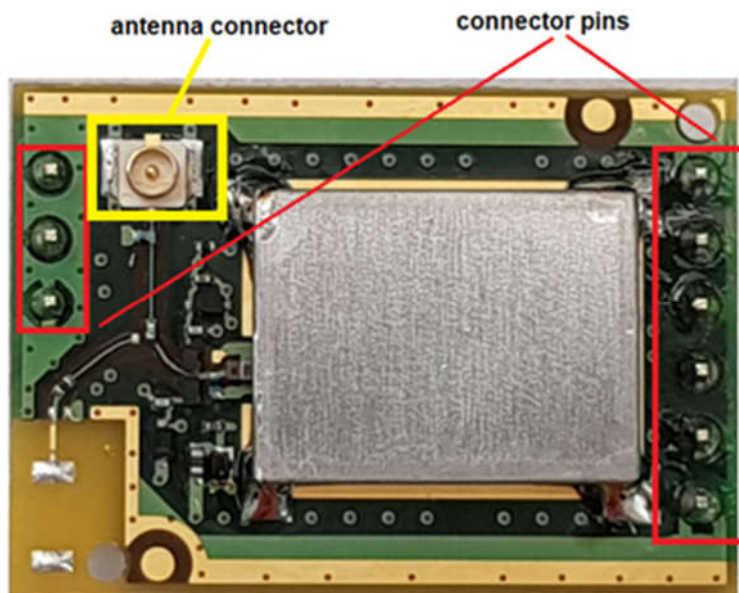
BT-VRG-STD is a Bluetooth module supporting BR, ERD and LE features.

It can be used only with the antenna Molex, part number 47950-0011, connected to the antenna connector on the module by means of its U.FL coaxial connector.

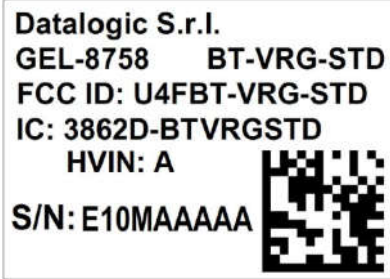
The module has two rows of connector pins with different number of connectors on each side allowing the integration without mistake of Datalogic products, developed with the same connector pins structure (see picture below)

Once installed the module onto the end product's motherboard, plug in the antenna using its connector.

This module cannot be installed with any other radio transmitter not authorized for use.



Module is labelled as below



For products integrating the BT-VRG-STD module labelling must show:  
"Contains FCC ID: U4FBT-VRG-STD" (for FCC) and "Contains IC: 3862D-BTVRGSTD (for IC).

After integration of the module into host products the host product manufacturer must ensure compliance with FCC Part 15B requirements.

#### Compliance statements

##### FCC

This device complies with Part 15 of the FCC Rules. Operation is subject to the following two conditions:

- (1) this device may not cause harmful interference, and
- (2) this device must accept any interference received, including interference that may cause undesired operation.

**RF Exposure:** This module can be used in mobile applications with a separation distance of at least 20cm from all persons in accordance with FCC §2.1091.

In accordance with KDB 447497 D01, section 4.3.1, this module is exempt from Head/Body SAR testing when installed in a host product with a Head/Body to antenna separation distance of  $\geq 6$ mm.

If the module is to be used with a smaller separation distance than the above SAR must be performed.

In accordance with KDB 447497 D01, section 4.3.1, this module is exempt from Extremity SAR testing when installed in a host product with a Extremity to antenna separation distance of  $\geq 5$ mm.

If the module is to be used with a smaller separation distance than the above SAR must be performed.

## ISED

This device complies with ISED's license-exempt RSSs. Operation is subject to the following two conditions:

- (1) This device may not cause interference; and
- (2) This device must accept any interference, including interference that may cause undesired operation of the device.

**RF Exposure: This module can be used in mobile applications applications with a separation distance of at least 20cm from all persons in accordance with RSS-102 Issue 5**

**In accordance with RSS-102, section 2.5.1, this module is exempt from Head/Body SAR testing when installed in a host product with a Head/Body to antenna separation distance of  $\geq 16$ mm.**

**If the module is to be used with a smaller separation distance than the above SAR must be performed.**

**In accordance with RSS-102, section 2.5.1, this module is exempt from Limb-Worn/Extremity SAR testing when installed in a host product with a Limb-Worn/Extremity to antenna separation distance of  $\geq 10$ mm.**

**If the module is to be used with a smaller separation distance than the above SAR must be performed.**

Le present appareil est conforme aux CNR ISED applicable aux appareils radio exempts de licence. L'exploitation est autorisée aux deux conditions suivantes:

- (1) L'appareil ne doit pas produire de brouillage, et
- (2) L'utilisateur de l'appareil doit accepter tout brouillage radioélectrique subi, même si le brouillage est susceptible d'en compromettre le fonctionnement

**Exposition RF: Ce module peut être utilisé dans des applications mobiles avec une distance de séparation d'au moins 20 cm par rapport à toutes les personnes, conformément à la norme RSS-102, édition 5.**

**Conformément à la section 2.5.1 du RSS-102, ce module est exempté de test SAR tête / corps lorsqu'il est installé dans un produit hôte avec une distance de séparation antenne tête / corps  $\geq 16$  mm.**

**Si le module doit être utilisé avec une distance de séparation inférieure à celle indiquée ci-dessus, un test SAR doit être effectué.**

**Conformément à la section 2.5.1 du RSS-102, ce module est exempté de test de SAR / extrême-membre lorsqu'il est installé dans un produit hôte avec une distance de séparation d'antenne supérieure / supérieure-à-antenne de  $\geq 10$  mm.**

**Si le module doit être utilisé avec une distance de séparation inférieure à celle indiquée ci-dessus, un test SAR doit être effectué.**