

External Photographs



Photograph 1 – Front View of the EUT, Mounted on Stand for Testing



Photograph 2 – Back View of the EUT, Mounted on Stand for Testing



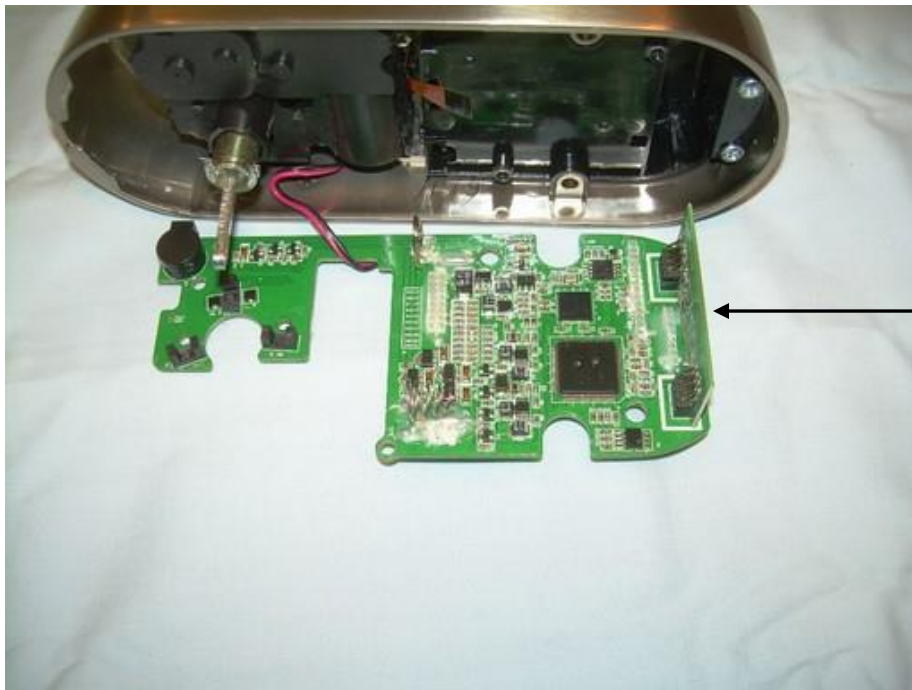
Photograph 3 – View of EUT with Battery Cover Removed



Photograph 4 – View of PCBs and Frame installed in EUT



Photograph 5 – Main PCB Mounting in Housing View



Photograph 6 – View of Radio PCB connected to Main PCB