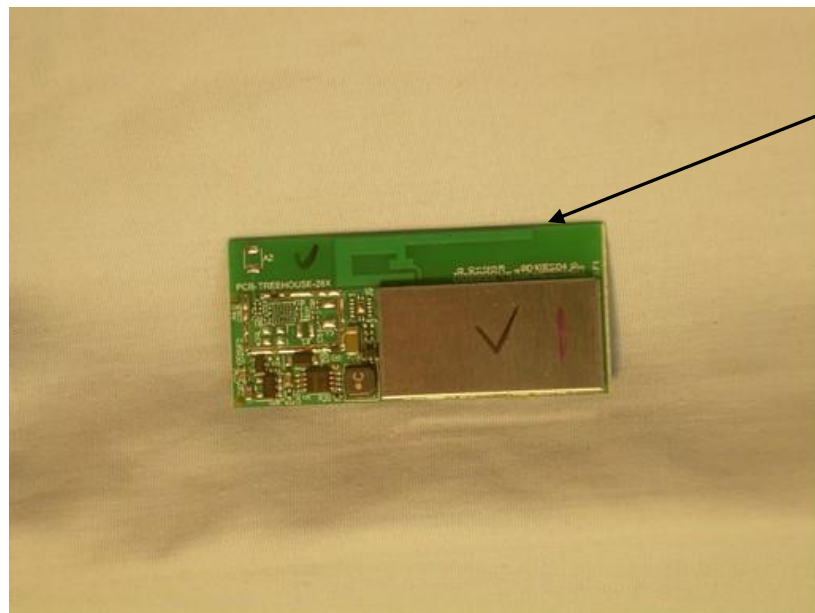


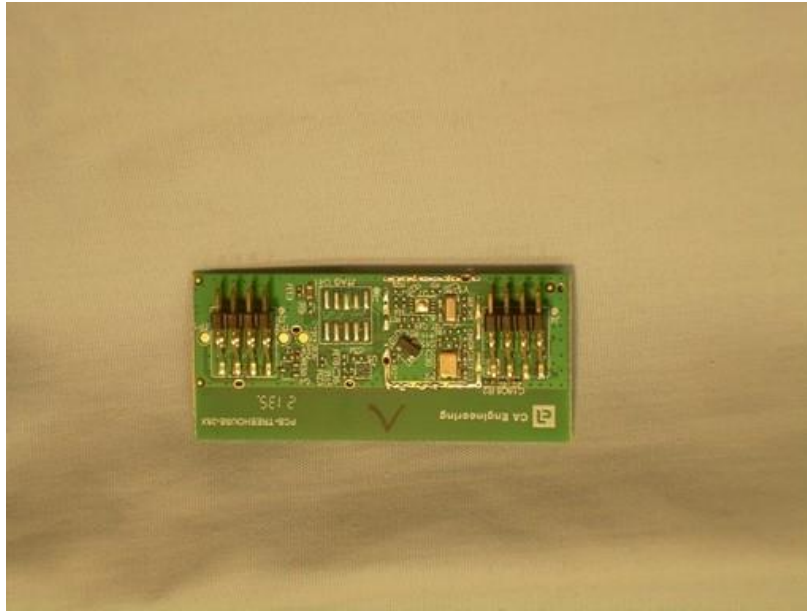
## Internal Photographs



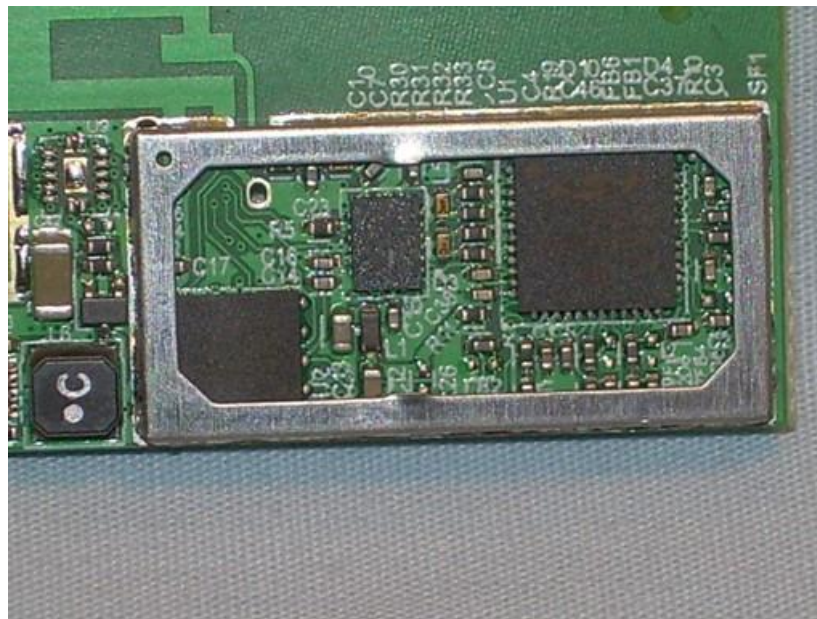
**Photograph 1 – Radio PCB Mounted to Main PCB**



**Photograph 2 – View of the Top Side of the Radio PCB**



**Photograph 3 – View of the Bottom Side of the Radio PCB**



**Photograph 4 – View of the Circuitry under the RF Shield**



**Photograph 5 – Full View of the Combined PCBAs**