



Excellence in Compliance Testing

Certification Exhibit

FCC ID: U4A-SCYPROX3

IC: 6982A-SCYPROX3

FCC Rule Part: 15.209

IC Radio Standards Specification: RSS-210

ACS Report Number: 10-0443.W06.11.A

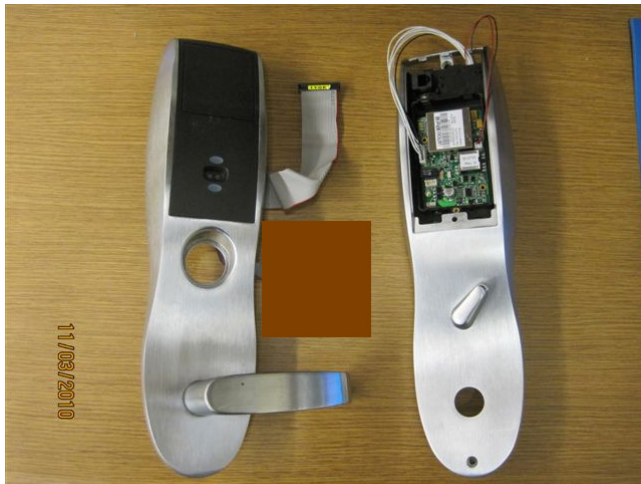
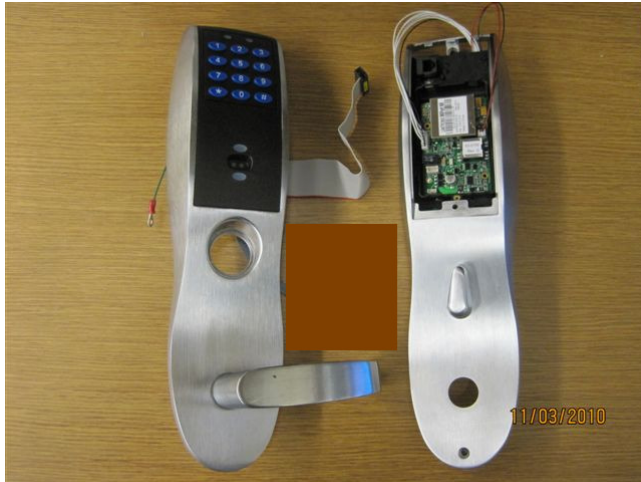
Manufacturer: Assa Abloy

Model: S1-PA/PK, S2-PA/PK,

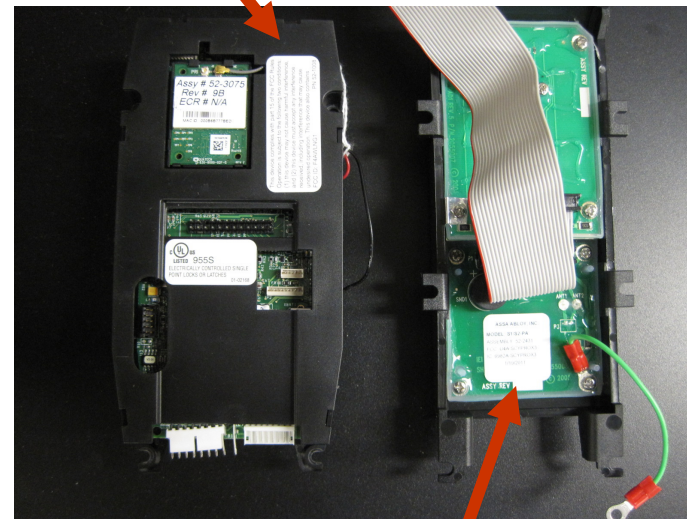
TCIP1-M802/M803, TCWI1-M802/M803

Label Information

S1-PA/PK and TCIP1-M802/M803 (FCC Model/ID/IC and Part 15 labels) – Lock Escutcheon



**S1-PA/PK and TCIP1-M802/M803
FCC Part 15 Label**



**S1-PA/PK and TCIP1-M802/M803
FCC Model/ID/IC Label**

S1-PA/PK and TCIP1-M802/M803 (FCC Model/ID/IC and Part 15 labels) – Lock Escutcheon



**S1-PA/PK and TCIP1-M802/M803
FCC Model/ID/IC Labels**

S1-PA/PK and TCIP1-M802/M803 (FCC Model/ID/IC and Part 15 labels) – Lock Escutcheon

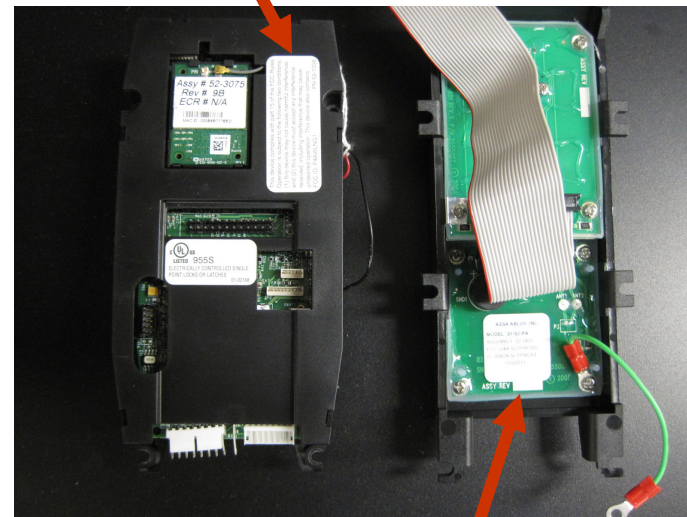


**S1-PA/PK and TCIP1-M802/M803
FCC Part 15 Label**

S2-PA/PK and TCWI1-M802/M803 (FCC Model/ID/IC and Part 15 labels) – Lock Escutcheon



**S2-PA/PK and TCWI1-M802/M803
FCC Part 15 Label**



**S2-PA/PK and TCWI1-M802/M803
FCC Model/ID/IC Label**

S2-PA/PK and TCWI1-M802/M803 (FCC Model/ID/IC and Part 15 labels) – Lock Escutcheon



**S2-PA/PK and TCWI1-M802/M803
FCC Model/ID/IC Labels**



S2-PA/PK and TCWI1-M802/M803 (FCC Model/ID/IC and Part 15 labels) – Lock Escutcheon



S2-PA/PK and TCWI1-M802/M803
FCC Part 15 Label