



Excellence in Compliance Testing

Certification Exhibit

**FCC ID: U4A-SCYICLS2
IC: 6982A-SCYICLS2**

**FCC Rule Part: 15.225
IC Radio Standards Specification: RSS-210**

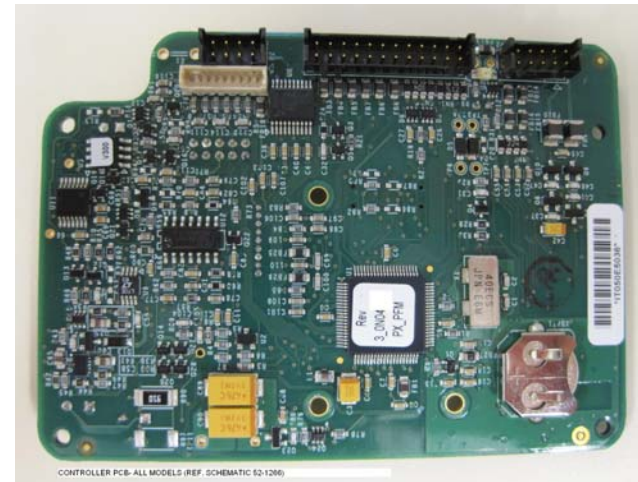
ACS Report Number: 11-0071.W06.11.A

Manufacturer: Assa Abloy, Inc.
Model: P1-IM/IKM, TCPIP-M819/M820, P2-IM/IKM, TCPWI-M819/M820

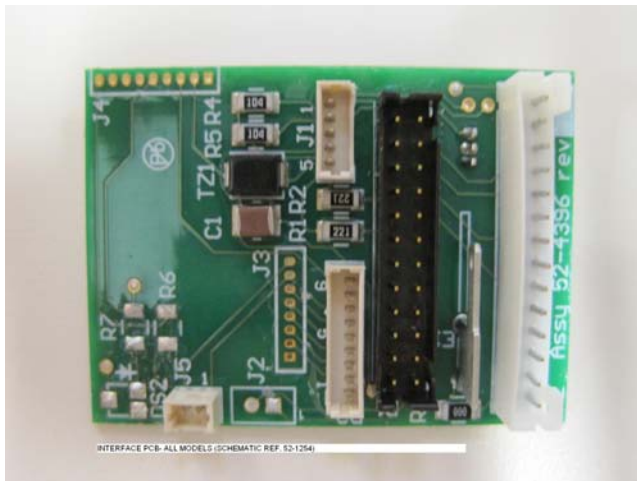
Internal Photos

CONTROLLER PCB- P1-IM/IKM, P2-IM/IKM, TCPIP-M819/M820, TCPWI-M819/M820

REF. SCHEMATIC 52-1266



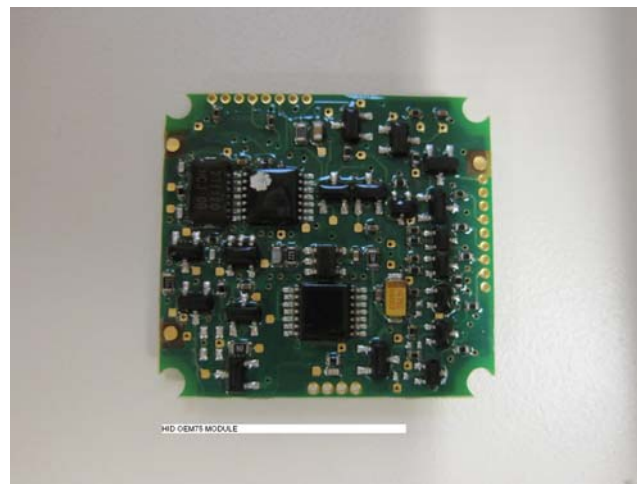
INTERFACE PCB- P1-IM/IKM, P2-IM/IKM, TCPIP-M819/M820, TCPWI-M819/M820
REF. SCHEMATIC 52-1254



HID 13.56 MHz ANTENNA PCB- P1-IM/IKM, P2-IM/IKM, TCPIP-M819/M820,
TCPWI-M819/M820

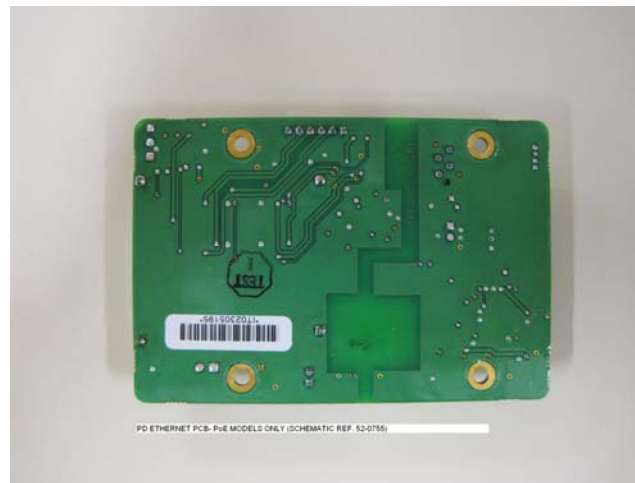


HID OEM75 PCB- P1-IM/IKM, P2-IM/IKM, TCP/IP-M819/M820, TCPWI-M819/M820



PD ETHERNET PCB (PoE MODELS ONLY)- P1-IM/IKM, TCPIP-M819/M820

REF. SCHEMATIC 52-0755



QUATECH 802.11 RADIO AND NANOBLUE ANTENNA (WiFi MODELS ONLY) P2-IM/IKM and TCPWI-M819/M820

