



Excellence in Compliance Testing

---

## **Certification Exhibit**

**FCC ID: U4A-SCYICLS0  
IC: 6982A-SCYICLS0**

**FCC Rule Part: 15.225  
IC Radio Standards Specification: RSS-210**

**ACS Report Number: 11-0125.W06.11.A**

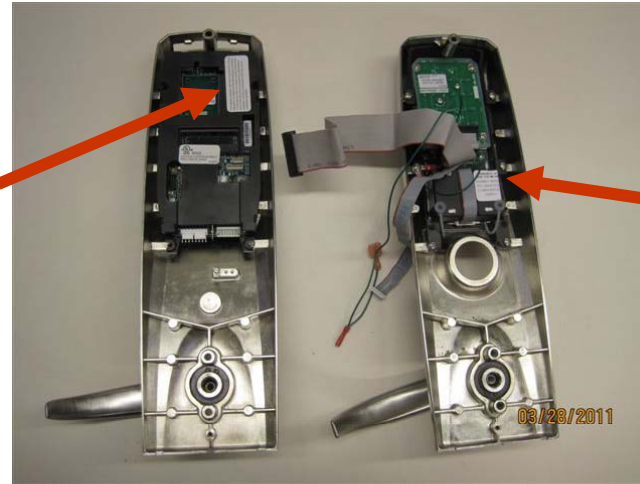
Manufacturer: Assa Abloy, Inc.  
Models: TCWI1-M812/M813, TCIP1-M812/M813

## **Label Information**

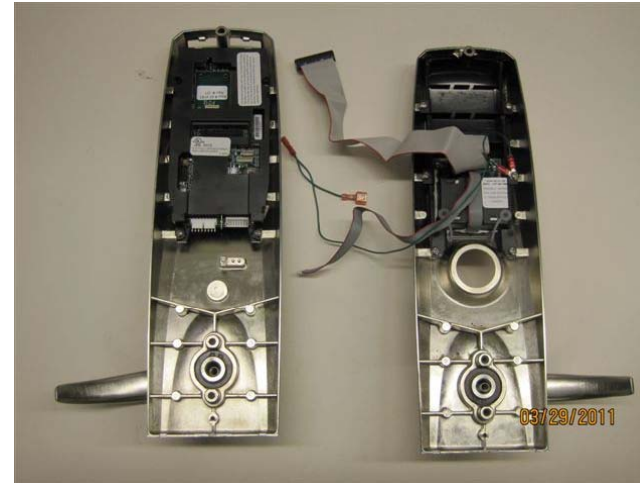
TCIP1-M812/M813 (FCC Model/ID/IC and Part 15 labels) – Mortise Lock Escutcheon



TCIP1-M812/M813  
FCC Part  
15 Label



TCIP1-M812/M813  
FCC  
Model/ID/IC  
Label



ACS Certification Test Report Number: 10-0199.W06.11.A

TCIP1-M812/M813 (FCC Model/ID/IC and Part 15 labels) – Mortise Lock Escutcheon



**TCIP1-  
M812/M813**  
**FCC**  
**Model/ID/IC**  
**Label**

**ACS Certification Test Report Number: 10-0199.W06.11.A**

TCIP1-M812/M813 (FCC Model/ID/IC and Part 15 labels) – Mortise Lock Escutcheon



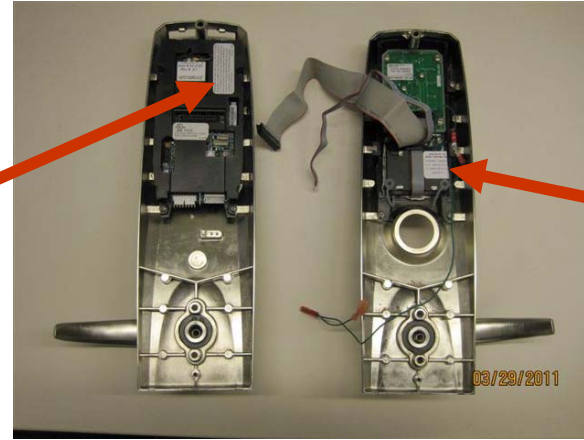
TCIP1-  
M812/M813  
FCC Part 15  
Label

ACS Certification Test Report Number: 10-0199.W06.11.A

TCWI1-M812/M813 (FCC Model/ID/IC and Part 15 labels) – Mortise Lock Escutcheon



TCWI1-M812/M813  
FCC Part 15  
Label



TCWI1-M812/M813  
FCC  
Model/ID/IC  
Label



ACS Certification Test Report Number: 10-0199.W06.11.A

TCW11-M812/M813 (FCC Model/ID/IC and Part 15 labels) – Mortise Lock Escutcheon



**TCW11-  
M812/M813  
FCC  
Model/ID/IC  
Label**

**ACS Certification Test Report Number: 10-0199.W06.11.A**

TCWI1-M812/M813 (FCC Model/ID/IC and Part 15 labels) – Mortise Lock Escutcheon



TCWI1-M812/M813  
FCC Part 15  
Label

ACS Certification Test Report Number: 10-0199.W06.11.A