



Excellence in Compliance Testing

Certification Exhibit

**FCC ID: U4A-MODBLE9052
IC: 6982A-MODBLE9052**

**FCC Rule Part: 15.247
IC Radio Standards Specification: RSS-247**

ACS Project Number: 15-0143

Manufacturer: Assa Abloy Inc.
Model: BLE9052

Label Information

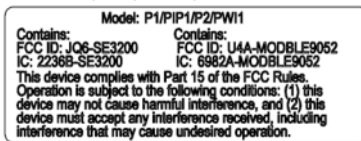
Steven Pfalzgraf
EM Product Engineer

June 15, 2015

Sample Label:

There are 2 labels required for the model P1\P2\WI1\IP1. The host requires a label that states the modules used within the device. The BLE module requires its FCC ID located on it.

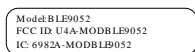
The P1\P2\WI1\IP1 HOST label with text as seen below



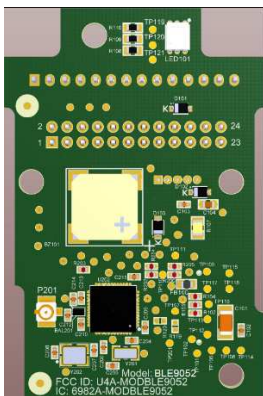
Applied to mounting housing of the HOST as seen below



The Model: BLE9052 Assembly: 52-9052 label with text as seen below



Applied to the assembly 52-9052 via silkscreen as below



Sincerely,

Steven Pfalzgraf
Product Development Engineer