

Certification Exhibit

**FCC ID: U4A-MODBLE9052
IC: 6982A-MODBLE9052**

**FCC Rule Part: 15-0247
IC Radio Standards Specification: RSS-247**

ACS Project Number: 15-0143

**Manufacturer: Assa Abloy Inc.
Model: BLE9052**

External / Internal Photos

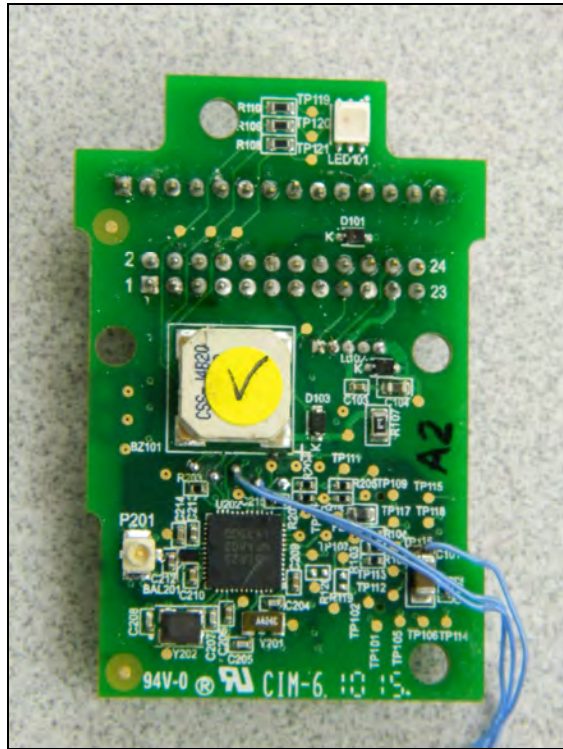


Figure 1: Module

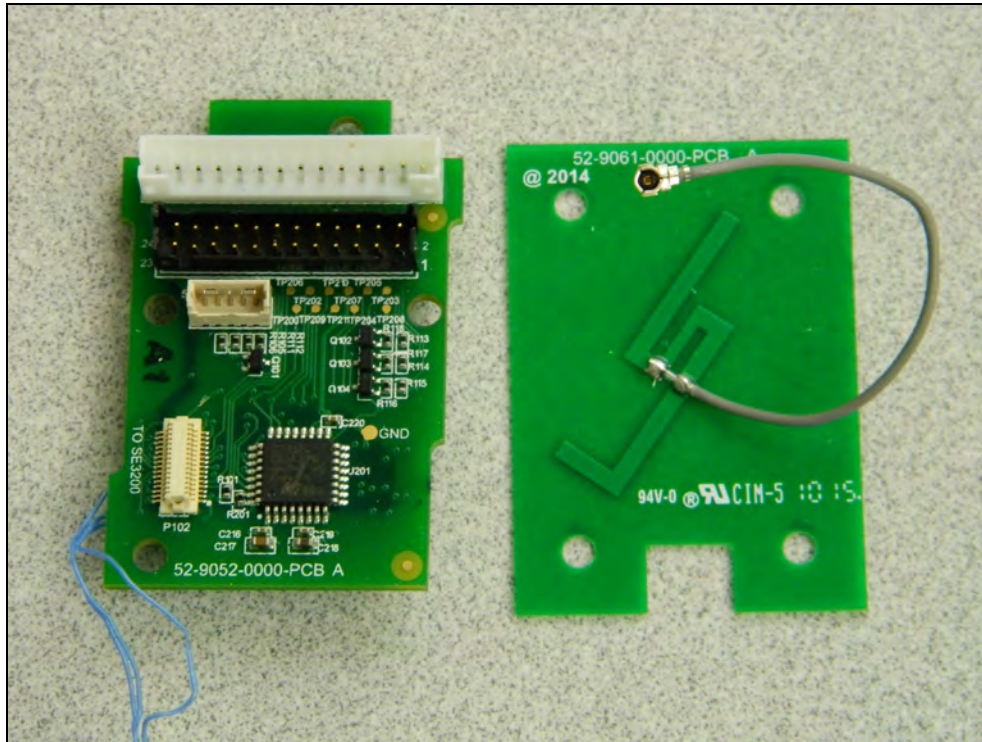


Figure 2: Module with Antenna



Figure 3: External Photo – Host – Passport 1000 P2 BIKMPS\C 10 Line Battery



Figure 4: External Photo – Host – Passport 1000 P2 BIKMPS\C 10 Line Battery



Figure 5: External Photo – Host – Passport 1000 P2 BIKMPS\C 8200 Battery



Figure 6: External Photo – Host – Passport 1000 P2 BIKMPS\C 8200 Battery



Figure 7: External Photo – Host – Passport 1000 P2 BIKMPS\C 80 Series Battery

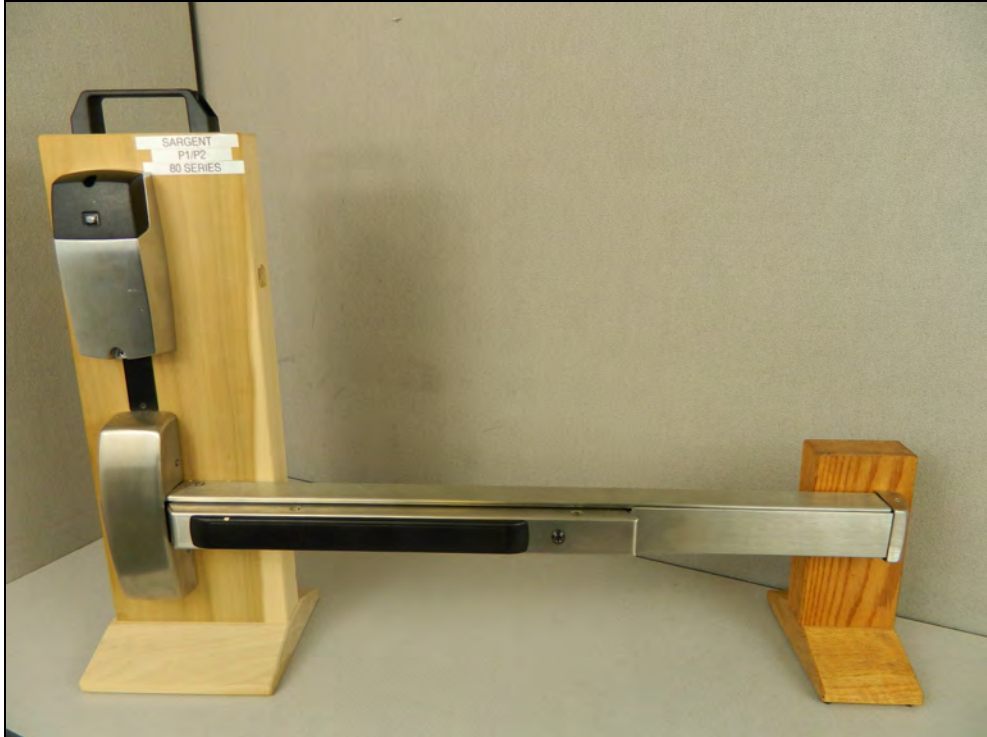


Figure 8: External Photo – Host – Passport 1000 P2 BIKMPS\C 80 Series Battery



Figure 9: External Photo – Host – Passport 1000 P2 BIKMPS\C 10 Line Hardwire



Figure 10: External Photo – Host – Passport 1000 P2 BIKMPS\C 10 Line Hardwire

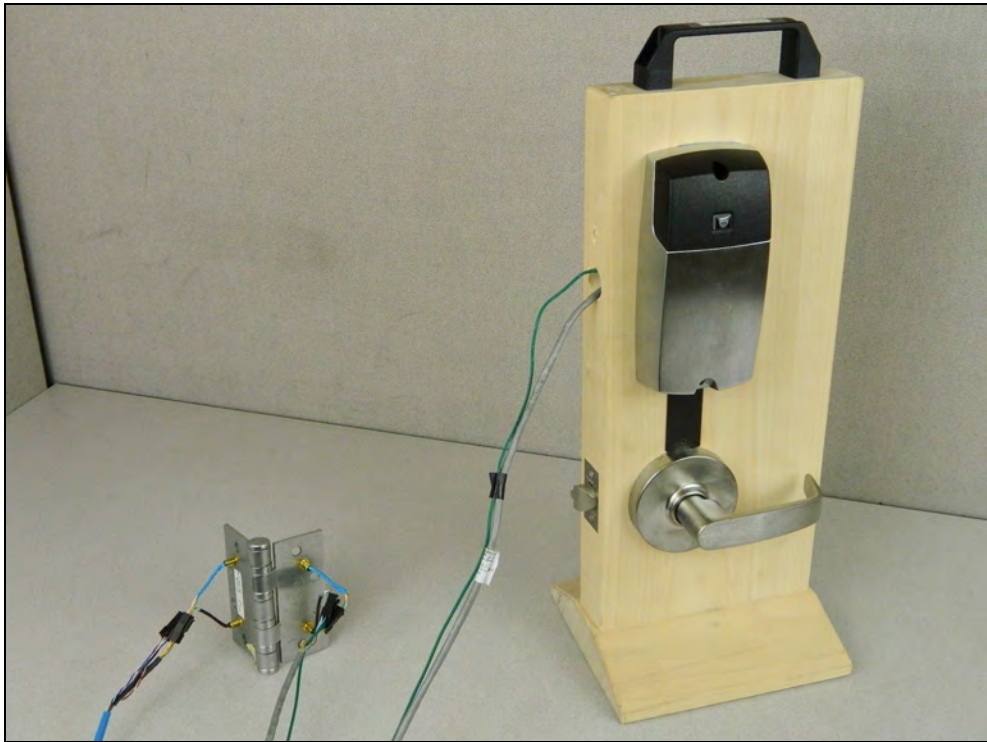


Figure 11: External Photo – Host – Passport 1000 P1 BIKMPSiC 10 Line PoE



Figure 12: External Photo – Host – Passport 1000 P1 BIKMPSiC 10 Line PoE

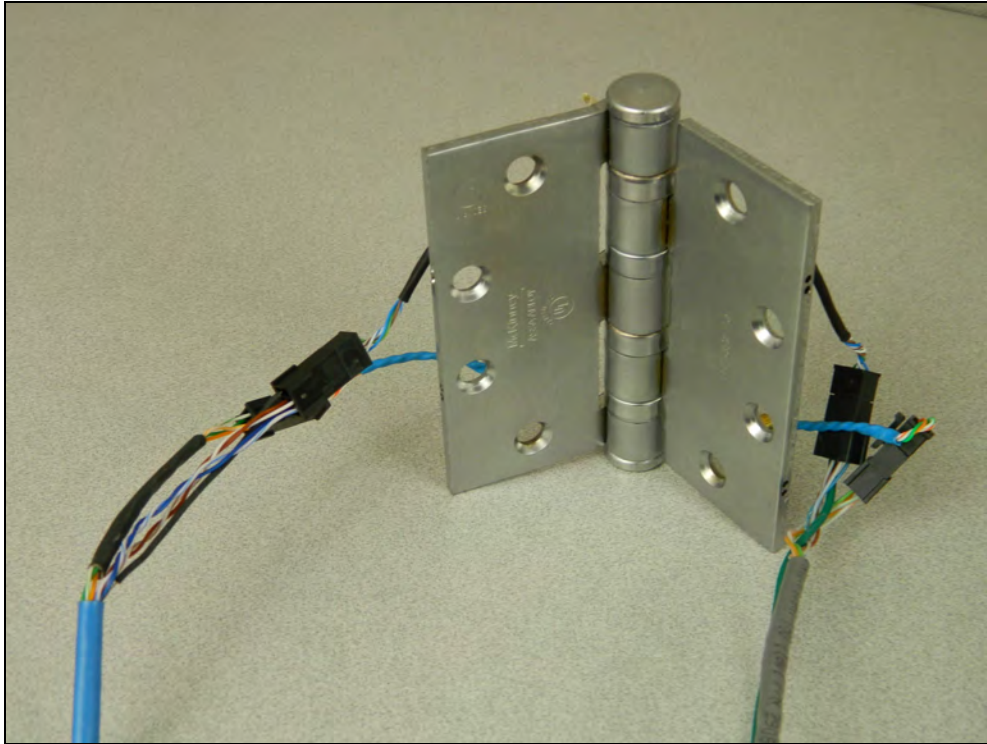


Figure 13: External Photo – Host – Passport 1000 P1 BIKMPS\C 10 Line PoE (Hinge)

*Note: All Corbin Russwin Access7000 host models are identical to the Sargent Passport host models shown in this exhibit.

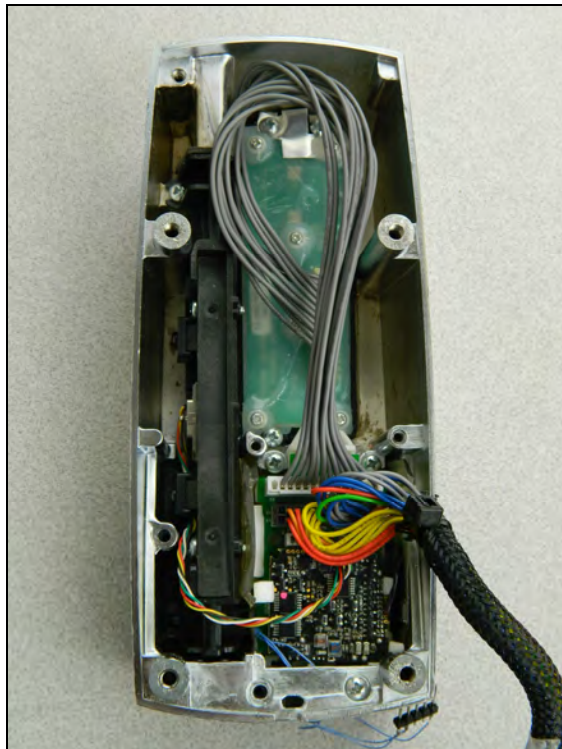


Figure 14: Module Internal to Host

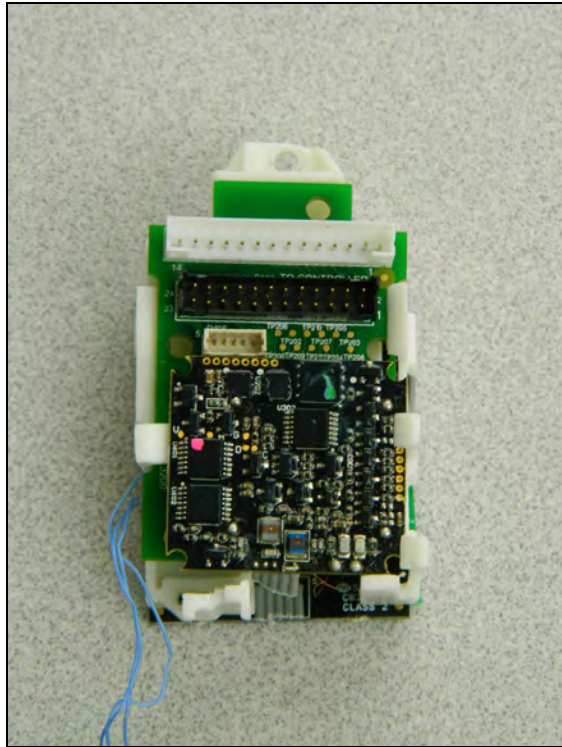


Figure 15: Module

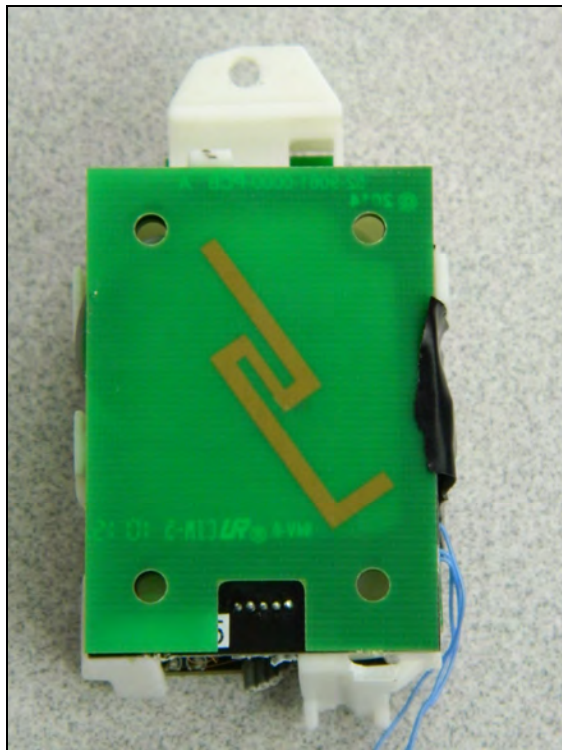


Figure 16: Module

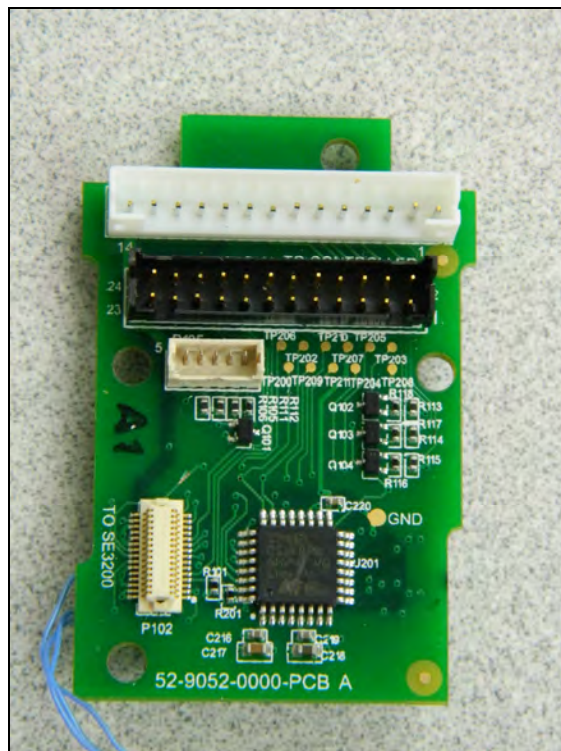


Figure 17: Module (Ready for Host)