

Certification Exhibit

**FCC ID: U4A-MODBLE9051
IC: 6982A-MODBLE9051**

**FCC Rule Part: 15-0247
IC Radio Standards Specification: RSS-247**

ACS Project Number: 15-0143

Manufacturer: Assa Abloy Inc.
Model: BLE9051

External / Internal Photos

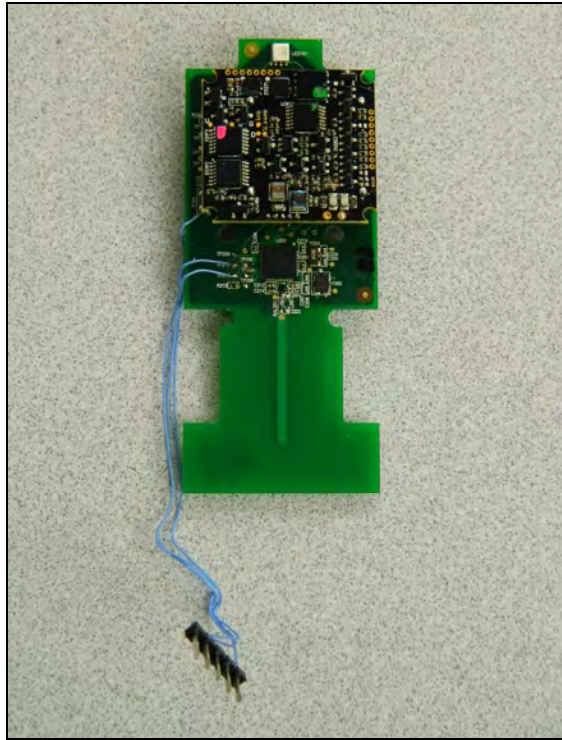


Figure 1: Module

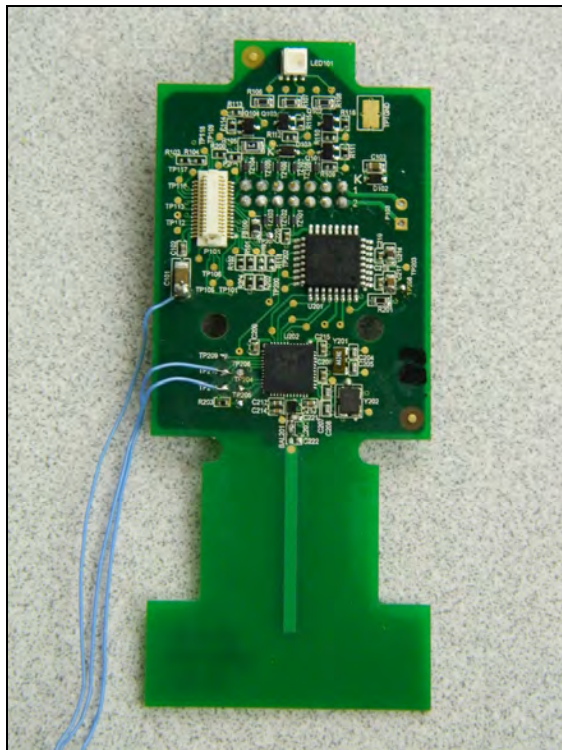


Figure 2: Module

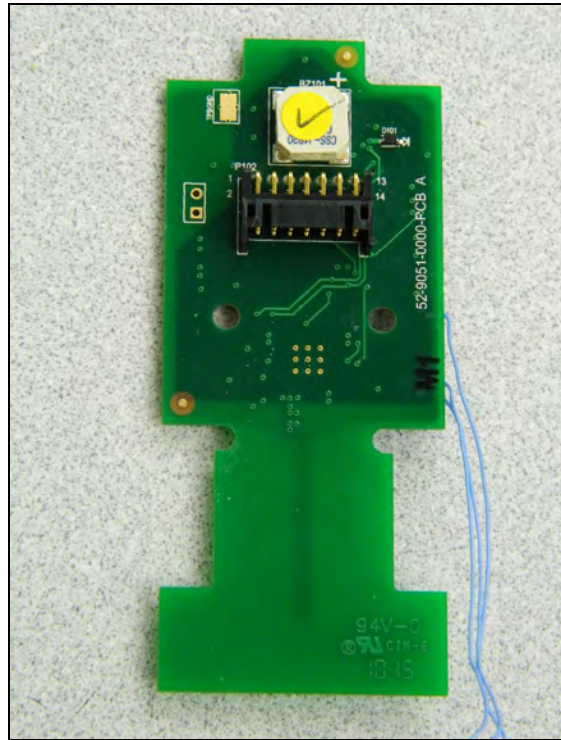


Figure 3: Module Antenna



Figure 4: External Photo – Host – Sargent IN120 BIPS/C-Mx 7900/8200 Series Battery



Figure 5: External Photo – Host – Sargent IN120 BIPS/C-Mx 7900/8200 Series Battery



Figure 6: External Photo – Host – Sargent IN120 BIPS/C-Mx 10 Line Battery



Figure 7: External Photo – Host – Sargent IN120 BIPS/C-Mx 10 Line Battery



Figure 8: External Photo – Host – Sargent IN120 BIPS/C-x 7900/8200 Series Hardwire



Figure 9: External Photo – Host – Sargent IN120 BIPS/C-x 7900/8200 Series Hardware

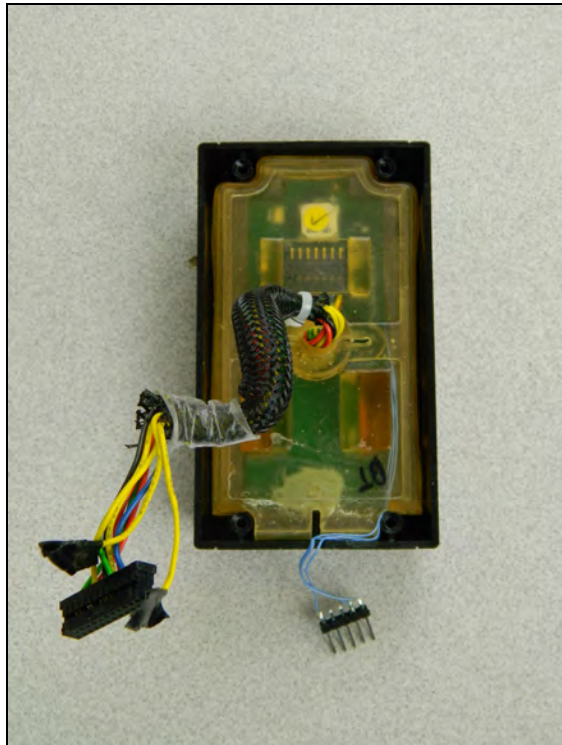


Figure 10: Module Internal to Host

*Note: All Corbin Russwin host models are identical to the Sargent host models shown in this exhibit.