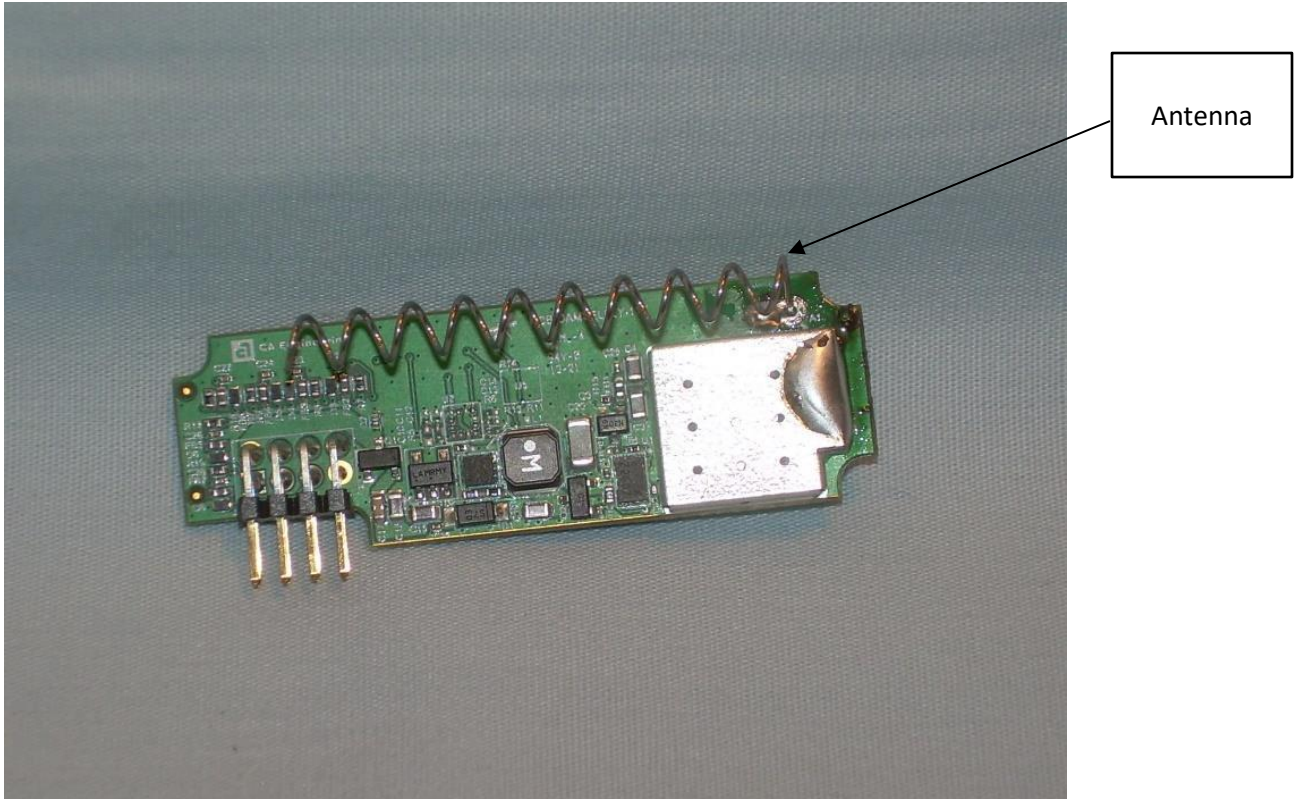
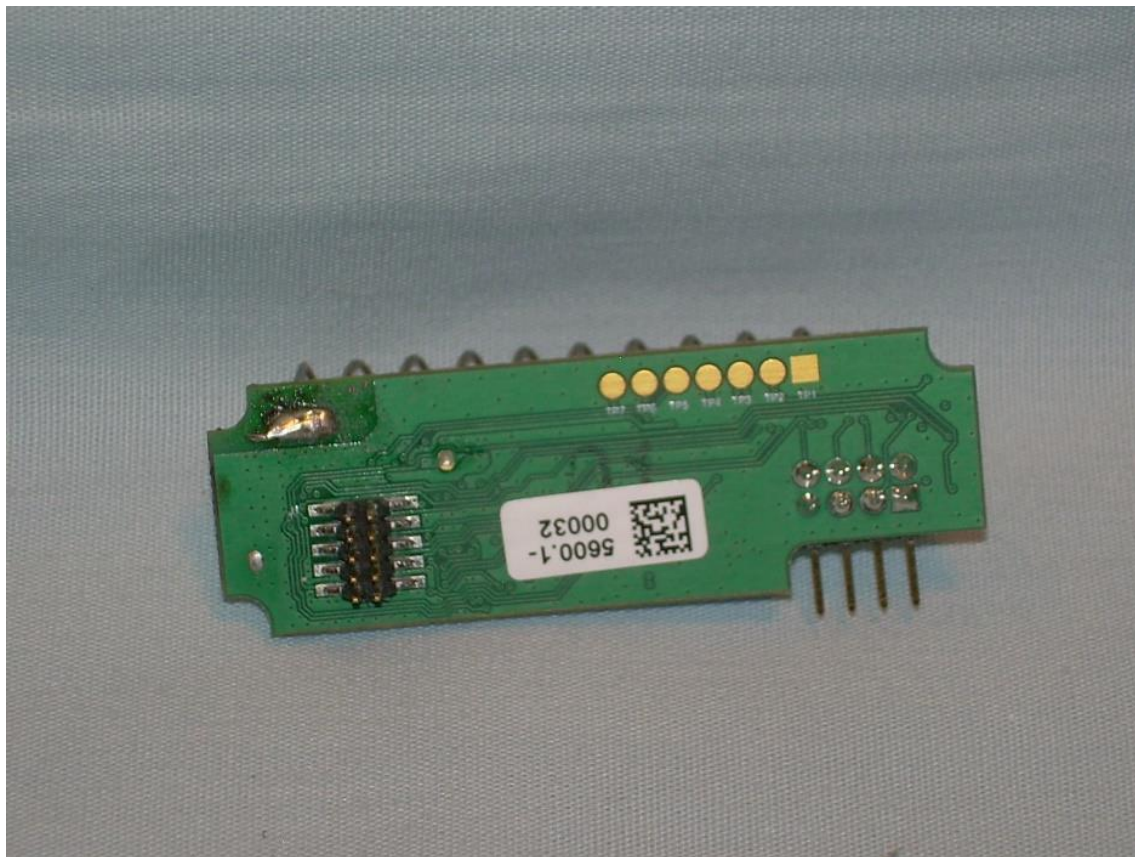


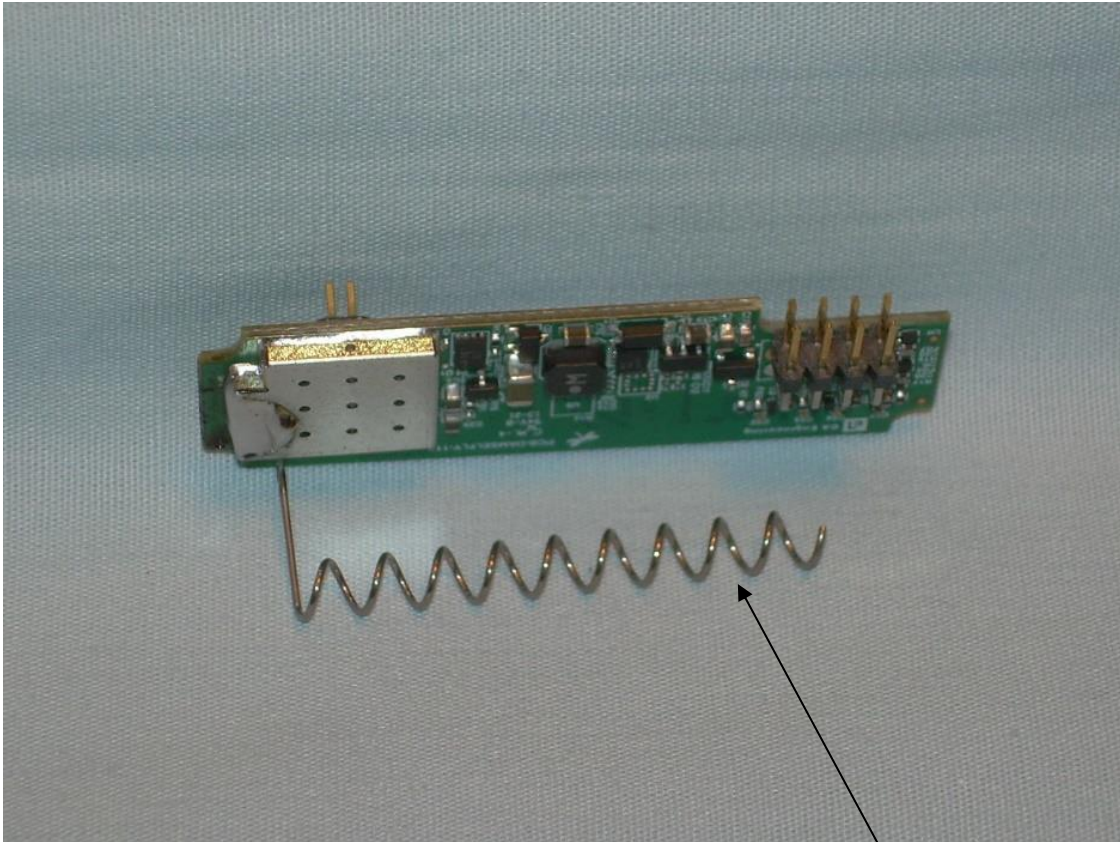
External Photographs



Photograph 1 – Front View of the EUT

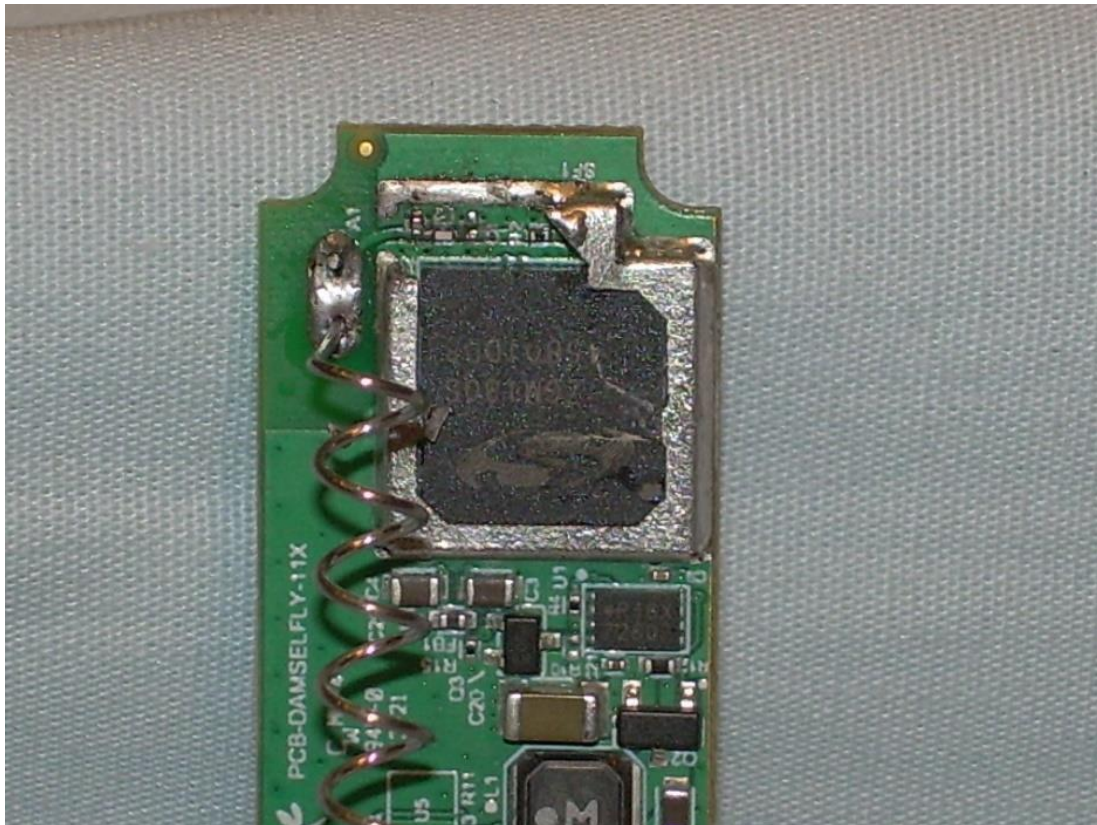


Photograph 2 – Back View of the EUT



Photograph 3 – Side View of the EUT

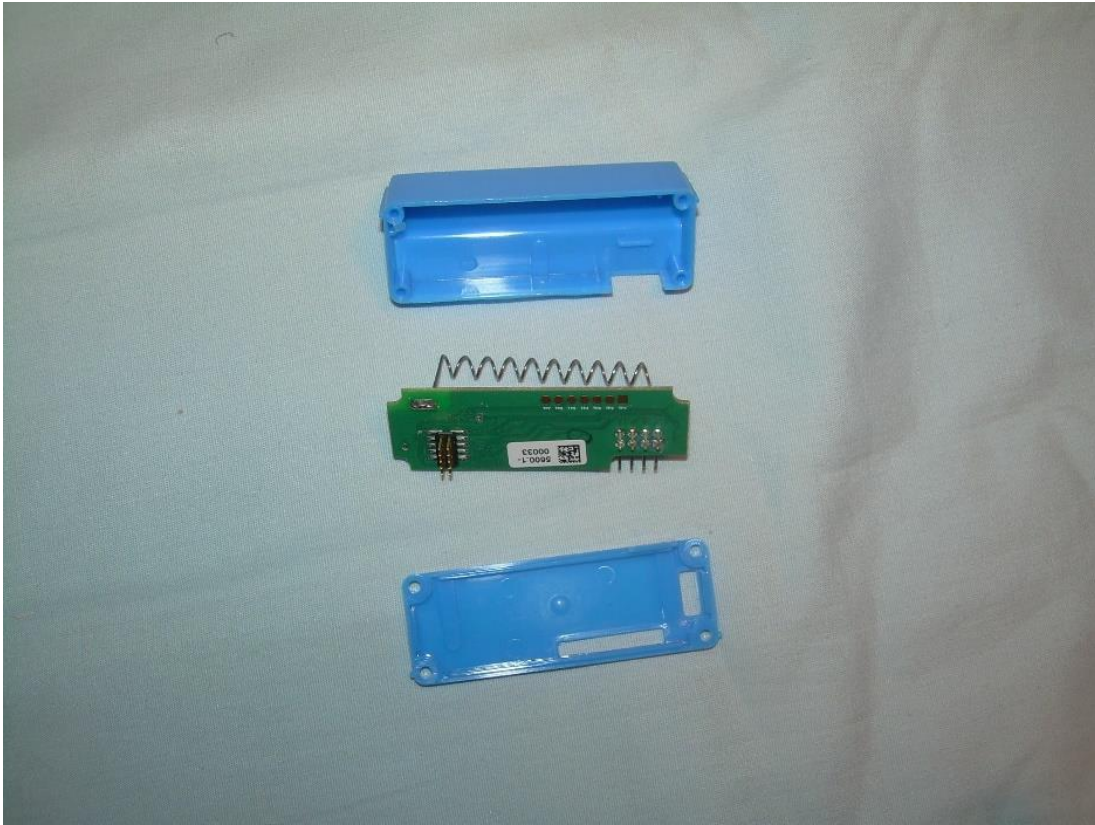
Antenna



Photograph 4 – View of the Circuitry Under the Shield



Photograph 5 – View of the PCB as mounted in Housing



Photograph 6 – View of the PCB in relation to housing