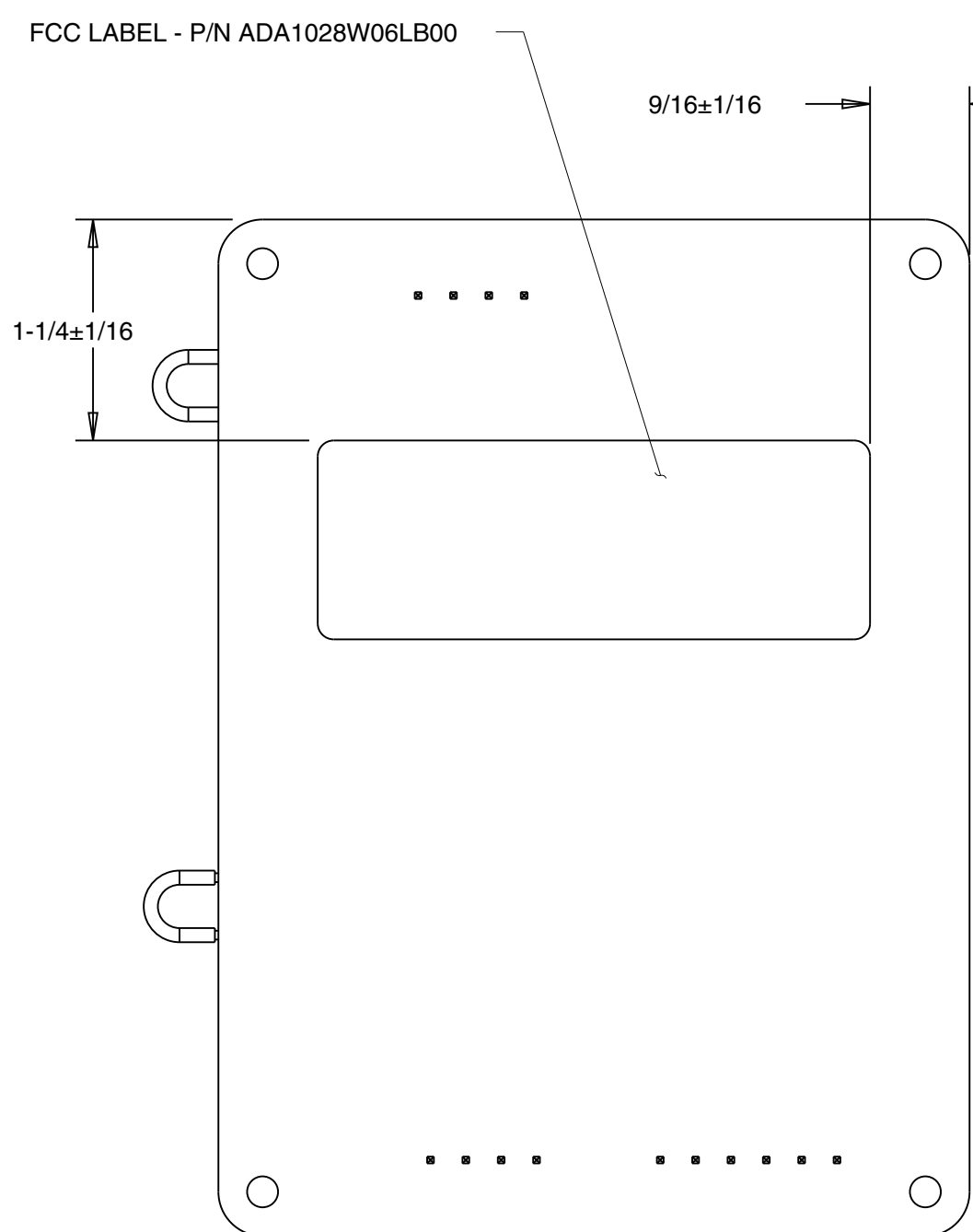
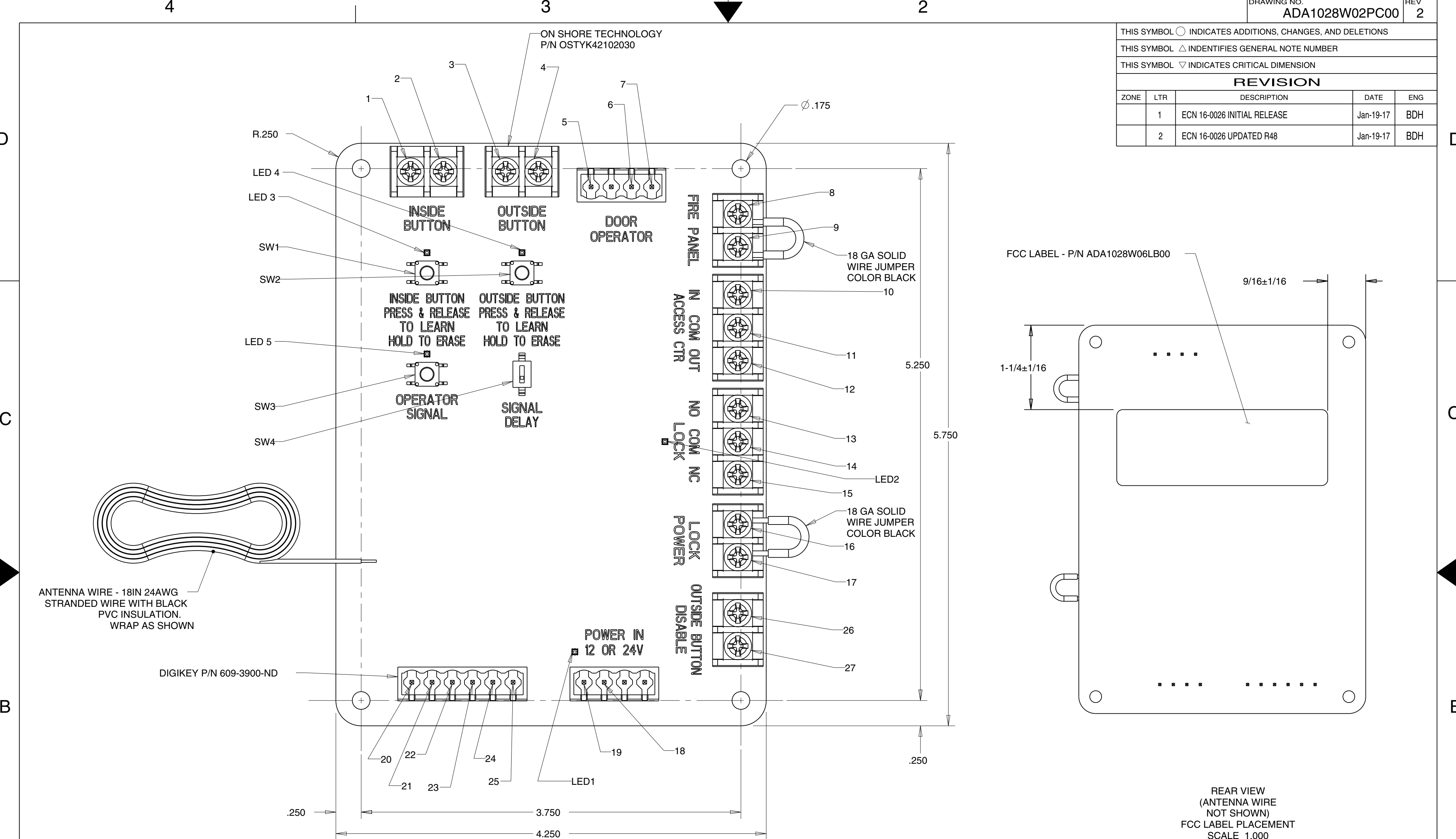


THIS SYMBOL ○ INDICATES ADDITIONS, CHANGES, AND DELETIONS
 THIS SYMBOL △ IDENTIFIES GENERAL NOTE NUMBER
 THIS SYMBOL ▽ INDICATES CRITICAL DIMENSION

REVISION				
ZONE	LTR	DESCRIPTION	DATE	ENG
	1	ECN 16-0026 INITIAL RELEASE	Jan-19-17	BDH
	2	ECN 16-0026 UPDATED R48	Jan-19-17	BDH



- Inputs/Outputs:
1. Power input – Gnd (19), 12 OR 24VDC (18)
 2. Output to Operator – Sig (5), Ground (6), 24VDC (7)
 3. INSIDE switch Input – (1/2)
 4. OUTSIDE Switch Input – (3/4)
 5. Switch to manually transmit RF signal to operator (SW3) with LED5
 6. Switch to learn/reset INSIDE RF button (SW1) with LED3
 7. Switch to learn/reset OUTSIDE RF button (SW2) with LED4
 8. RF signal from INSIDE activate button (RF1)
 9. RF signal from OUTSIDE activation button (RF2)
 10. Fire panel - (8/9)
 11. Access Control – In, COM, Out (10/11/12)
 12. Lock connector – NO, COM, NC (13/14/15) with LED2
 13. Signal Delay selector switch (SW4)
 14. Sensor – (GND, 24VDC, COM, OCC, SSS, ODS) – (20/21/22/23/24/25)
 15. Antenna – the interface module will have an antenna for receiving signals.
 (The antenna can be extended outside the metal enclosure for improved signal reception.)
 16. Audible beeper for programming feedback
 17. Disable Outside Pushbutton (26/27)

NOTES:
 1. SEE SHEETS 2-5 FOR SCHEMATIC
 2. REFER TO ADA1028W02PC00_BOM.PDF FOR BILL OF MATERIAL
 3. REFER TO ADA1028W02PC00_TEST_PROCEEDURE.XLS FOR TEST PROCEEDURE.

NOTICE TO PERSONS RECEIVING THE DRAWING AND/OR TECHNICAL INFORMATION:
 Yale Security Inc. claims proprietary rights to the material disclosed herein. This drawing and/or technical information is issued in confidence for engineering information only and may not be reproduced or used to manufacture anything shown or referred to herein without direct written permission from Yale Security Inc. to the user.
 This drawing and/or technical information is the property of Yale Security Inc. and is loaned for mutual assistance to be returned when its purpose has been served.

THIS IS A Pro/E GENERATED DRAWING/ALL CHANGES TO THIS DRAWING MUST BE MADE AT THE Pro/E SYSTEM.

Surface / Finish:	DRAWING COMPLIES WITH ANSI Y14.5M - 1994	Material: N/A	Heat Treatment: XXX	UNLESS OTHERWISE SPECIFIED: TWO PLACE DECIMAL ±0.01 THREE PLACE DECIMAL ±0.005 ANGULAR: ± 0.5 FRACTIONAL ± 1/64 SURFACE FINISH
Volume:	Weight:	Surface Area:	Created(YYYY-MM-DD): 2017-01-19	Designed by: BDH
ASSA ABLOY		Door Control		Scale: 1.500
Yale Security Inc		ASSY - WIRELESS INTERFACE MODULE		Dwg Size: C
Monroe DC		Alternate ID: ADA1028W02PC00		Projection: Third Angle
				Rev: 2

4

3

2

DRAWING NO. ADA1028W02PC00 REV 2

THIS SYMBOL ○ INDICATES ADDITIONS, CHANGES, AND DELETIONS				
THIS SYMBOL △ IDENTIFIES GENERAL NOTE NUMBER				
THIS SYMBOL ▽ INDICATES CRITICAL DIMENSION				
REVISION				
ZONE	LTR	DESCRIPTION	DATE	ENG
		SEE SHEET 1	Jan-19-17	

D

D

C

C

B

B

A

A

THIS IS A Pro/E GENERATED DRAWING/ALL CHANGES TO THIS DRAWING MUST BE MADE AT THE Pro/E SYSTEM.

Surface / Finish:		DRAWING COMPLIES WITH ANSI Y14.5M - 1994		Material: N/A		Heat Treatment: XXX		UNLESS OTHERWISE SPECIFIED: TWO PLACE DECIMAL ±0.01 THREE PLACE DECIMAL ±0.005 ANGULAR: ± 0.5				
Volume:		Surface Area:		Created(YYYY-MM-DD): 2017-01-19		Designed by: BDH		Drawn by: BDH		Scale: 1.500	Dwg Size: C	Projection: Third Angle
ASSA ABLOY Yale Security Inc Monroe DC				DOOR CONTROL ASSY - WIRELESS INTERFACE MODULE				Alternate ID: ADA1028W02PC00				
Document ID:										Rev: 2		

4

3

2

1

4

3

2

DRAWING NO. ADA1028W02PC00 REV 2

THIS SYMBOL ○ INDICATES ADDITIONS, CHANGES, AND DELETIONS				
THIS SYMBOL △ IDENTIFIES GENERAL NOTE NUMBER				
THIS SYMBOL ▽ INDICATES CRITICAL DIMENSION				
REVISION				
ZONE	LTR	DESCRIPTION	DATE	ENG
		SEE SHEET 1	Jan-19-17	

D

D

C

C

B

B

A

A

THIS IS A Pro/E GENERATED DRAWING/ALL CHANGES TO THIS DRAWING MUST BE MADE AT THE Pro/E SYSTEM.

Surface / Finish:		DRAWING COMPLIES WITH ANSI Y14.5M - 1994		Material: N/A		Heat Treatment: XXX		UNLESS OTHERWISE SPECIFIED: TWO PLACE DECIMAL ±0.01 THREE PLACE DECIMAL ±0.005 ANGULAR: ± 0.5					
Volume:		Surface Area:		Created(YYYY-MM-DD): 2017-01-19		Designed by: BDH		Drawn by: BDH		Scale: 1.500	Dwg Size: C	Projector: Third Angle	63
ASSA ABLOY Yale Security Inc Monroe DC				DOOR CONTROL ASSY - WIRELESS INTERFACE MODULE				Alternate ID: ADA1028W02PC00			Document ID:	Rev: 2	

4

3

2

1

4

3

2

DRAWING NO. ADA1028W02PC00 REV 2

THIS SYMBOL ○ INDICATES ADDITIONS, CHANGES, AND DELETIONS				
THIS SYMBOL △ IDENTIFIES GENERAL NOTE NUMBER				
THIS SYMBOL ▽ INDICATES CRITICAL DIMENSION				
REVISION				
ZONE	LTR	DESCRIPTION	DATE	ENG
		SEE SHEET 1	Jan-19-17	

D

D

C

C

B

B

A

A

THIS IS A Pro/E GENERATED DRAWING/ALL CHANGES TO THIS DRAWING MUST BE MADE AT THE Pro/E SYSTEM.

Surface / Finish:		DRAWING COMPLIES WITH ANSI Y14.5M - 1994		Material: N/A		Heat Treatment: XXX		UNLESS OTHERWISE SPECIFIED: TWO PLACE DECIMAL ±0.01 THREE PLACE DECIMAL ±0.005 ANGULAR: ± 0.5					
Volume:		Surface Area:		Created(YYYY-MM-DD): 2017-01-19		Designed by: BDH		Drawn by: BDH		Scale: 1.500	Dwg Size: C	Projection: Third Angle	63
ASSA ABLOY Yale Security Inc Monroe DC				DOOR CONTROL ASSY - WIRELESS INTERFACE MODULE				Alternate ID: ADA1028W02PC00			Document ID:	Rev: 2	

4

3

2

1

4

3

2

DRAWING NO. ADA1028W02PC00 REV 2

THIS SYMBOL ○ INDICATES ADDITIONS, CHANGES, AND DELETIONS				
THIS SYMBOL △ IDENTIFIES GENERAL NOTE NUMBER				
THIS SYMBOL ▽ INDICATES CRITICAL DIMENSION				
REVISION				
ZONE	LTR	DESCRIPTION	DATE	ENG
		SEE SHEET 1	Jan-19-17	

D

D

C

C

B

B

A

A

THIS IS A Pro/E GENERATED DRAWING/ALL CHANGES TO THIS DRAWING MUST BE MADE AT THE Pro/E SYSTEM.

Surface / Finish:		DRAWING COMPLIES WITH ANSI Y14.5M - 1994		Material: N/A		Heat Treatment: XXX		UNLESS OTHERWISE SPECIFIED: TWO PLACE DECIMAL ±0.01 THREE PLACE DECIMAL ±0.005 ANGULAR: ± 0.5 FRACTIONAL ± 1/64 SURFACE FINISH		
Volume:	Weight:	Surface Area:	Created(YYYY-MM-DD): 2017-01-19	Designed by: BDH	Drawn by: BDH	Scale: 1.500	Dwg Size: C	Projection: Third Angle	63	
ASSA ABLOY Yale Security Inc Monroe DC				DOOR CONTROL ASSY - WIRELESS INTERFACE MODULE				Alternate ID: ADA1028W02PC00		
Document ID:								Rev: 2		

4

3

2

1