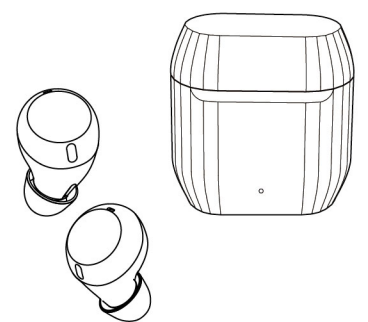


T100 ANC

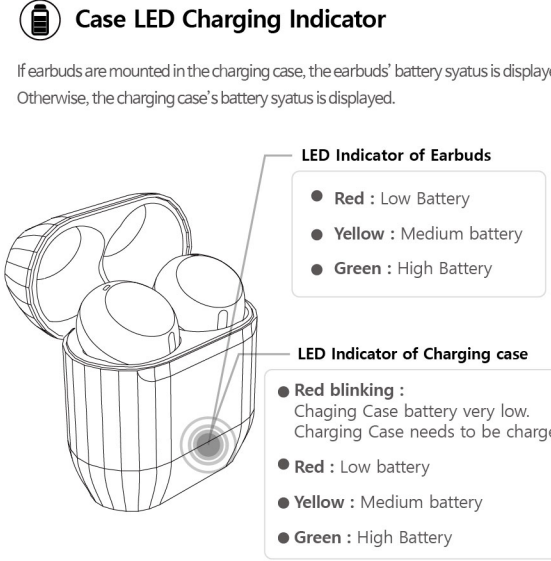
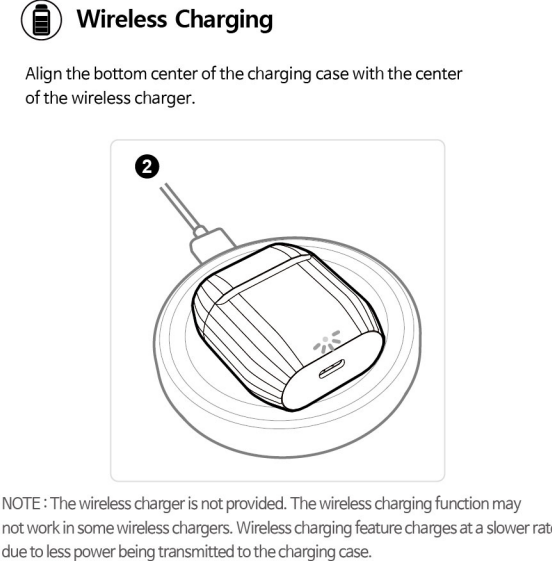
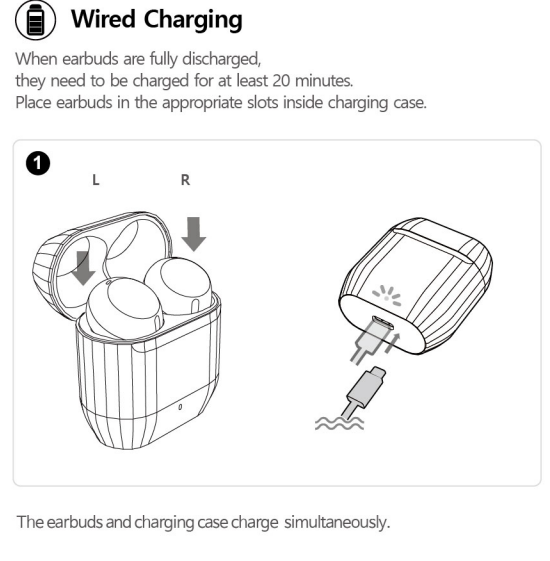
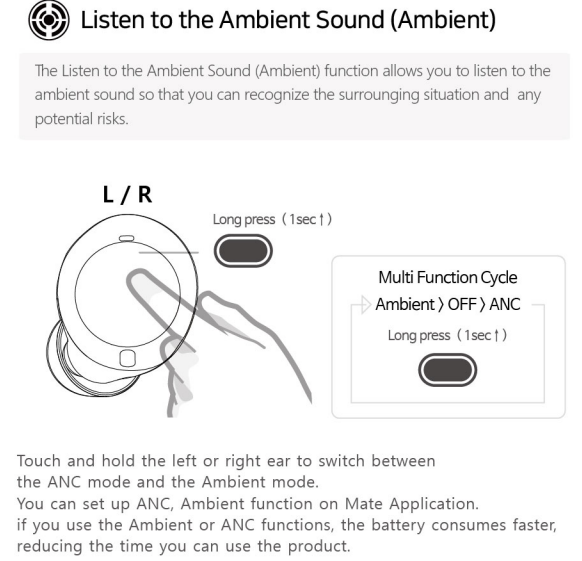
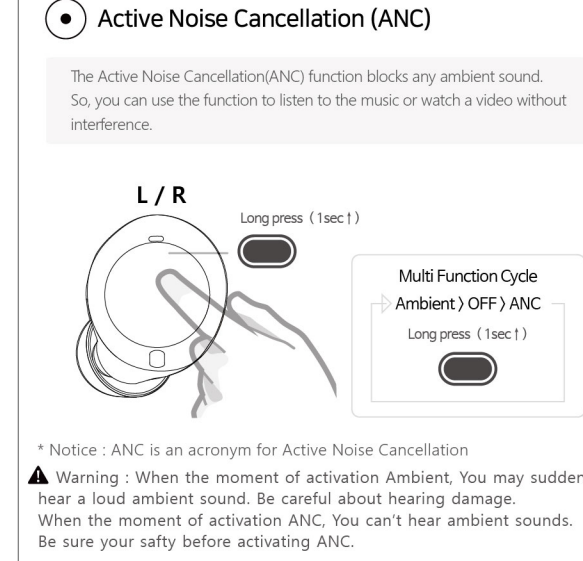
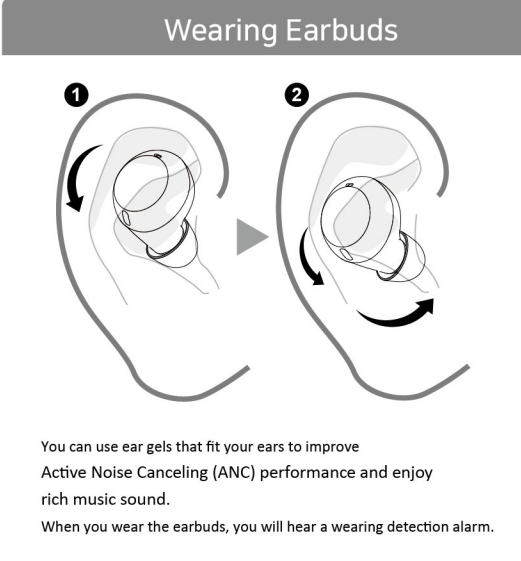
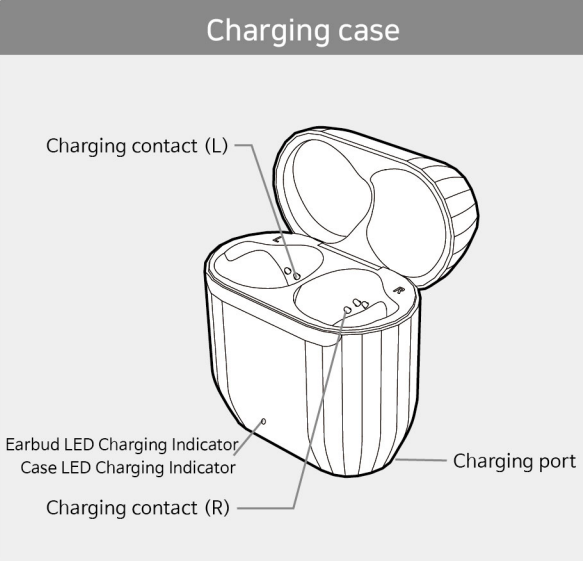
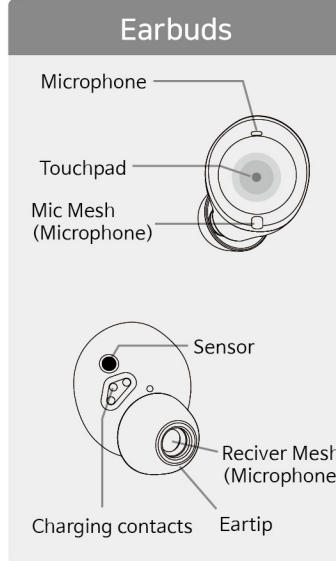


Please read the Important Safety Information for the proper use of this product. After reading, store this User Manual in a place easily accessible to all users.

Images may differ in appearance from the actual product. Contents subject to change without prior notice.

Bluetooth® is a registered trademark of Bluetooth SIG, Inc. worldwide.

CAUTION
Make sure authentic components are used. Using a non-authentic component may damage the product and thus void the warranty. Actual product design may differ from images shown in manual.

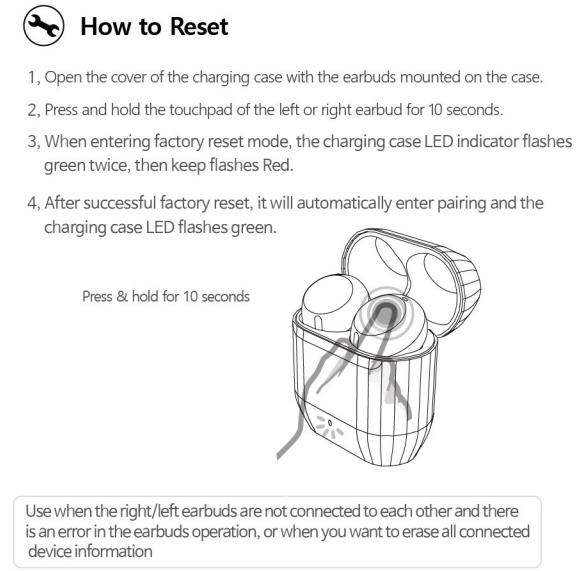
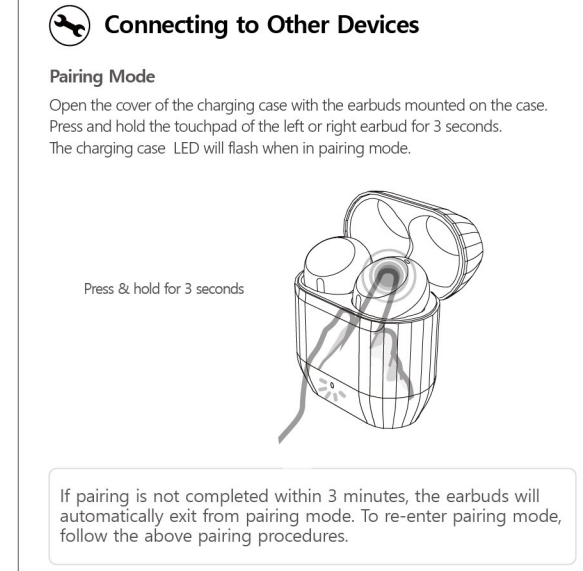
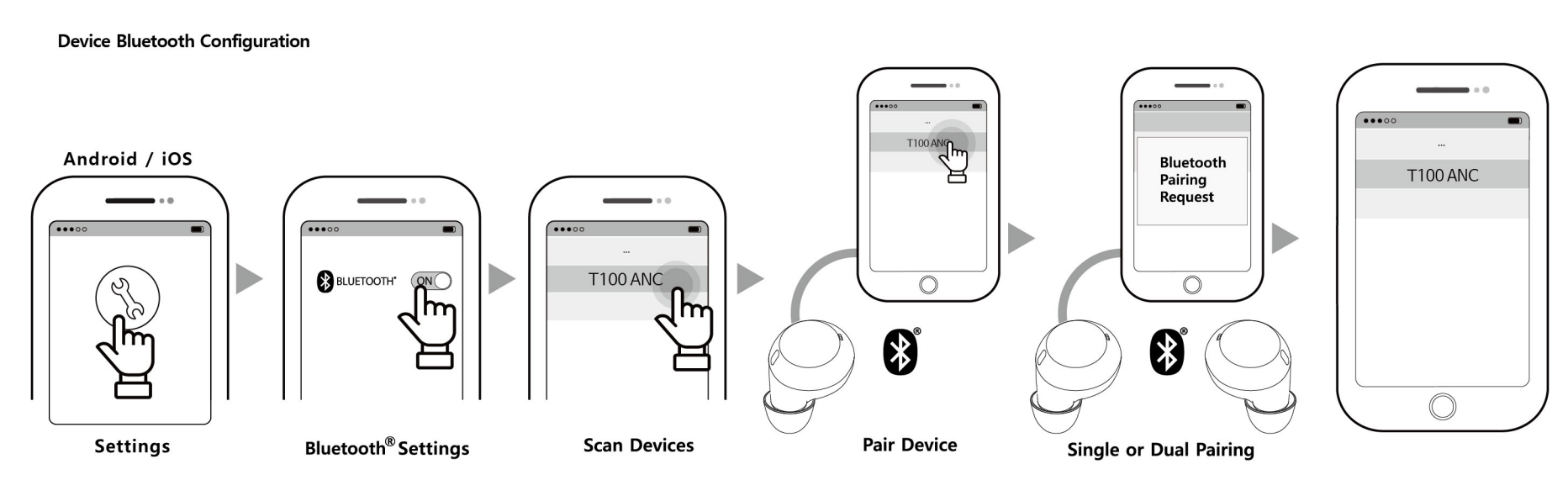


1 Connection

How to pair

- Turn on the Bluetooth function on the mobile phone or the device to be connected. Open the cover of the charging case with the earbuds mounted on the case. Press and hold the touchpad of the left or right earbud for 3 to 5 seconds until the battery status indicator blinks in blue.
- After initial pairing, the earbuds will automatically reconnect to the previously connected devices when turned on.

The earbuds will disconnect from connected device once they are placed back into charging case and cover is closed.



M MATE APP Installation

Install MATE APP and experience vary & useful functions via continuous firmware update.

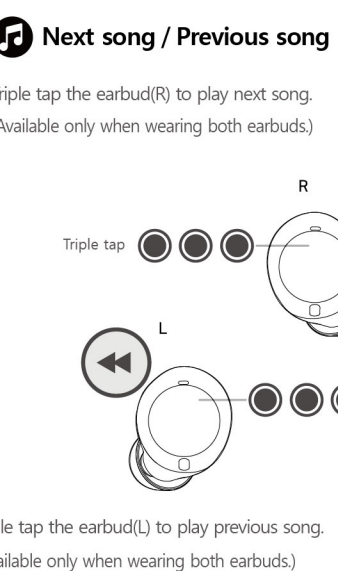
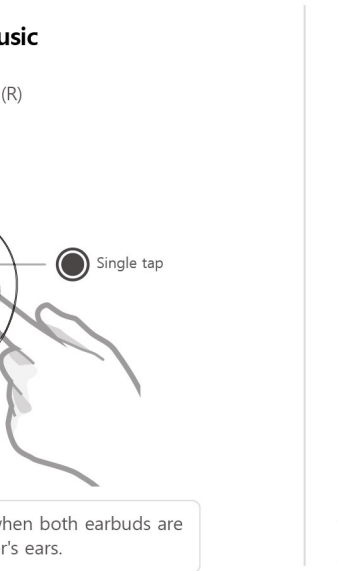
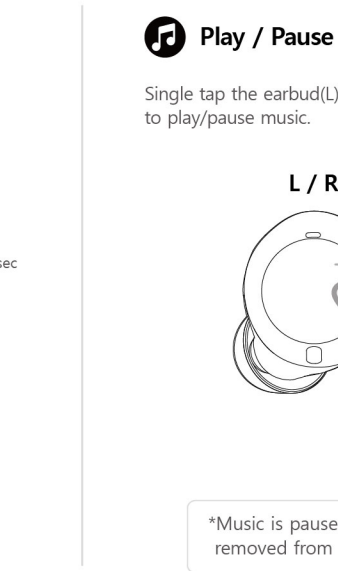
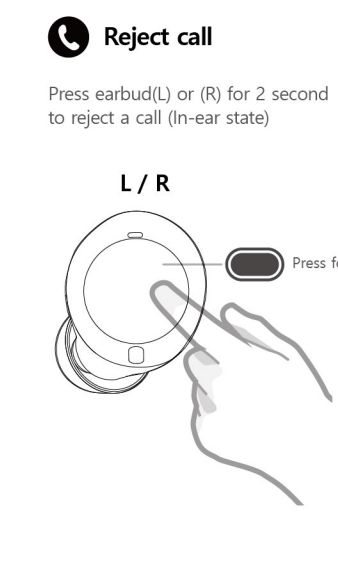
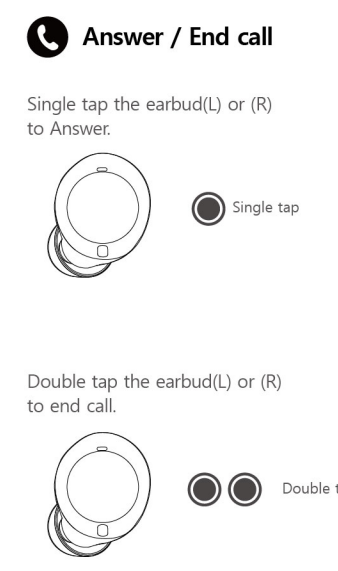
Download MATE APP on Google Playstore(Android), App Store(iOS)

SPECIFICATION

Bluetooth® specification	Ver 5.2
Profiles	HSP/ HFP/ A2DP/ AVRCP
Battery	Charging case : 410mAh Lithium-ion polymer Earbud : 60mAh Lithium-ion polymer
RCV	Dynamic 8mm Driver
Play time	Up to 8 hours(ANC OFF), Up to 7 hours(ANC ON) 16 additional hours with Charging case
Rated input voltage	Charging case : 5V ⚡ 500mA Earbud : 5V ⚡ 120mA
Noise control	3Mics Hybrid Active Noise Cancelling
Splash & Sweat Resistant (IPX4)	
FCC ID : U3WT100ANC	

Duration if use may vary depending on the connected device, features being used, settings, signal strength, operating temperature, frequency band, and other method of use.

2 Operation of touchpad



*Music is paused when both earbuds are removed from user's ears.

CAUTION

- Do not disassemble, adjust, or repair the product arbitrarily.
- Do not place the product near excessive heat or flammable material.
- Do not arbitrarily replace the battery, as it may explode.
- The product may be damaged if an incompatible recharger is used.
- Make sure that an infant or child does not swallow a magnet or a small component of the product.
- Failure to do so may result in fire or electric shock.
- For your safety, do not wear the product while it is being charged.
- If you have a medical device implanted, contact your doctor before using this device.
- Do not pull the earphone cable with excessive force.
- For your safety, do not remove the battery incorporated in the product.
- The lithium-ion polymer battery is a hazardous component which can cause injury.
- Battery replacement by an unqualified professional can cause damage to your device.
- If the product is exposed to excessive sweat, clean the product.
- Make sure to keep the earpits clean at all times.
- Make sure to clean sweat and liquid before charging to prevent corrosion on the earbuds.
- Using a power source other than the charger, such as a computer and auxiliary battery, may result in a slower charging speed due to a lower electric current.
- The product may be heated when it is being charged. This is normal and product will stop charging if the battery's temperature rise over the threshold.

WARNING

- Canal type earphones may cause inflamed when used for a long time or worn dirty (dust, sweat, etc.) on them.
- Do not drop the product from a high place.
- Make sure there is no water, alcohol, or benzene in contact with the product.
- Do not store the product in a wet or dusty place.
- Do not place heavy objects on the product.
- It is not waterproof and should not be submerged in water. (Product is sweat and water resistant (IPX4).
- Make sure that infant, child and pet does not swallow, suck or put in mouth.
- Do not wear the earbuds in high-traffic areas, such as roads or crosswalks. Doing so may result in accidents due to slowed reaction times.
- Do not wear earbuds in driving for your safety.
- The headset contains magnets in its earbuds.
- The American Heart Association (AHA) and the Medicines and Healthcare Products Regulatory Agency (MHRA) both warn that magnets can affect the operation of implanted pacemakers, cardioverters, defibrillators, insulin pumps or other electro medical devices (collectively, "Medical Device") within the range of 15 cm (6 inches). If you are a user of any of these Medical Devices, DO NOT USE THE HEADSET UNLESS YOU HAVE CONSULTED WITH YOUR PHYSICIAN.
- Do not store your headset near magnetic fields. Magnetic stripe cards, including credit cards, phone cards, passbooks, and boarding passes, may be damaged by magnetic fields.
- Avoiding hearing damage
Permanent hearing loss may occur if you use your headset at a high volume.
Set the volume to a safe level. Over time you can become accustomed to a higher volume that may sound normal but can be damaging to your hearing.
If you experience ringing in your ears or muffled speech, stop listening and have your hearing checked.
The louder the volume, the less time that is required before your hearing could be affected.
- Using headsets safely
Use of headsets to listen to music while operating a vehicle is not recommended and is illegal in some areas. Be careful and attentive while driving. Stopping using this device if you find it disruptive or distracting while operating any type of vehicle or performing any other activity that requires your full attention.

REGULATORY INFORMATION

FCC NOTICE TO USERS:
This device complies with part 15 of the FCC Rules. Operation is subject to the following two conditions:
(1) This device may not cause harmful interference, and
(2) This device must accept any interference received, including interference that may cause undesired operation.
Changes or modifications not expressly approved by the manufacturer (or party responsible for compliance) could void the user's authority to operate the equipment.

ADDITIONAL INFORMATION

Bluetooth® connection precautions
- To avoid problems when connecting your headset to another device, place the devices close to each other.
- Ensure that your headset and the other Bluetooth® device are within the Bluetooth® connection range (10 m).
- The distance may vary depending on the environment the devices are used in.
- Ensure that there are no obstacles between the headset and a connected device, including human bodies, walls, corners, or fences etc.

Standard Limited Warranty

Bluecom declares product warranty as described in the user manual. The warranty period starts from the date of purchase. If the purchase date has not been identified, warranty period will be counted three months after the date of manufacture.

Subject and Warranty Period
1, Main unit, USB cable, Free of charge warranty period 1 year from date of purchase
2, Packing box, user manual, etc., are not guaranteed to be replaced

What is not covered under warranty?
This Limited Warranty is conditioned upon proper use of the Product. This Limited Warranty does not cover: (a) defects or damage resulting from accident, misuse, abnormal use, abnormal conditions, improper storage, exposure to liquid, moisture, dampness, sand or dirt, neglect, or unusual physical, electrical or electromechanical stress; (b) scratches, dents and cosmetic damage, unless caused by BLUECOM; (c) defects or damage resulting from excessive force; (d) equipment that has the serial number or the QR code removed, defaced, damaged, altered or made illegible; (e) ordinary wear and tear; (f) defects or damage resulting from the use of Product in conjunction or connection with accessories, products, or ancillary/peripheral equipment not furnished or approved by BLUECOM; (g) defects or damage resulting from improper testing, operation, maintenance, installation, service, or adjustment not furnished or approved by BLUECOM, including but not limited to installation of unauthorized software and unauthorized root access, both of which shall void this limited warranty; (h) defects or damage resulting from external causes such as collision with an object, fire, flooding, dirt, windstorm, lightning, earthquake, exposure to weather conditions, theft, blown fuse, or improper use of any electrical source; (i) defects or damage resulting from cellular signal reception or transmission, or viruses or other software problems introduced into the Product; or (j) Product used or purchased outside the United States. This Limited Warranty covers batteries only if battery capacity falls below 80% of rated capacity or the battery leaks, and this Limited Warranty does not cover any battery if the battery has been charged by a battery charger not specified or approved by BLUECOM for charging the battery.

How to obtain Warranty Service
To obtain service under this Limited Warranty, you must return the Product to BLUECOM's designated location in an adequate container for shipping, accompanied by the sales receipt or comparable proof of sale showing the original date of purchase by the first consumer purchaser, the serial number of the Product and the seller's name and address.
To obtain assistance on where to deliver the Product, please e-mail BLUECOM support desk at support@blue.com.kr. If BLUECOM determines that any Product is not covered by this Limited Warranty, you must pay all parts, shipping, and labor charges for the repair or return of such Product.

Bluecom Co.,Ltd
116, Venture-ro Yeosu-si Jeon-si, Korea