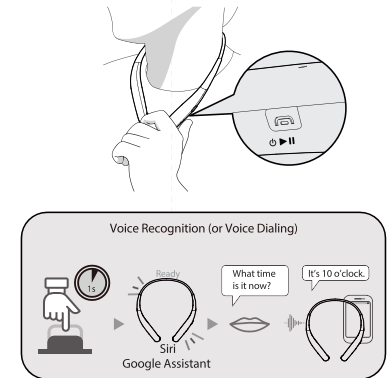
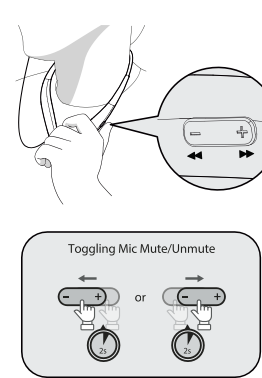
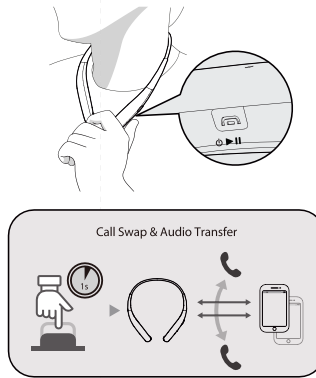
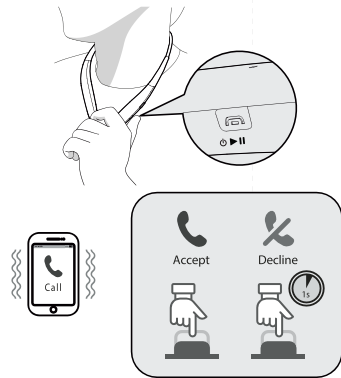
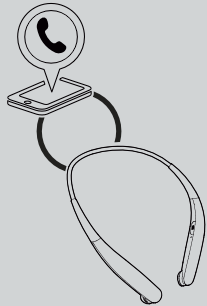
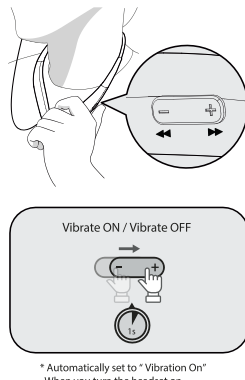
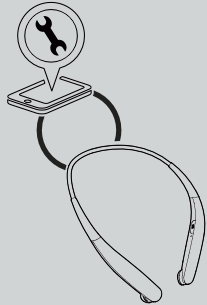


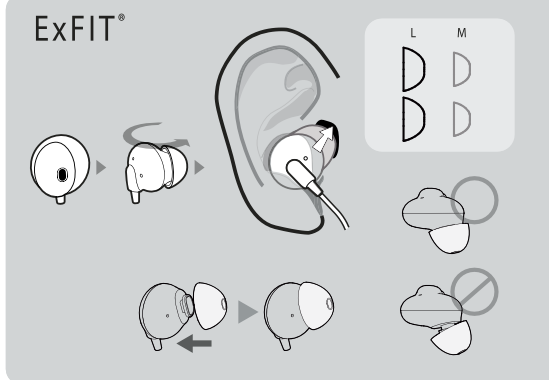
4 Call



5 Setting



* Automatically set to "Vibration On" When you turn the headset on.



SPECIFICATION

Bluetooth [®] specification	Ver 5.0
Profiles	HSP/HFP/A2DP/AVRCP
Battery	220mAh Li-Polymer
Audio	HD Voice, ExFIT [™]
RCV	14mm Power Driver Receiver
Usage Time	15 hours
Noise Reduction	Noise Reduction / Echo Cancellation
Water resistant	IPX4

Duration of use may vary depending on the connected mobile device, features being used, settings, signal strength, operating temperature, frequency band, and other methods of use.

IMPORTANT SAFETY INSTRUCTIONS

- CAUTION**
- Do not disassemble, adjust, or repair the product arbitrarily.
 - Do not place the product near excessive heat or flammable material.
 - Do not arbitrarily replace the battery, as it may explode.
 - The product may be damaged if an incompatible charger is used.
 - Make sure that an infant or child does not swallow a magnet or a small component of the product.
 - Failure to do so may result in fire or electric shock.
 - For your safety, do not wear the product while it is being charged.
 - If you have a medical device implanted, contact your doctor before using this device.
 - Do not pull the earphone cable with excessive force.
 - For your safety, do not remove the battery incorporated in the product.
 - The lithium-ion polymer battery is a hazardous component which can cause injury.
 - Battery replacement by an unqualified professional can cause damage to your device.
 - If the product is exposed to excessive sweat, clean the product.
 - Keep the earphone gel tip clean.
 - Do not bend or twist the headset excessively.
- WARNING**
- Do not drop the product from a high place.
 - Make sure there is no water, alcohol, or benzene in contact with the product.
 - Do not store the product in a wet or dusty place.
 - Do not place heavy objects on the product.
 - It is not waterproof and should not be submerged in water. (Product is sweat and water resistant IPX4)
 - The headset contains magnets in its earbuds.
 - The American Heart Association (AHA) and the Medicines and Healthcare Products Regulatory Agency (MHRA) both warn that magnets can affect the operation of implanted pacemakers, cardioverters, defibrillators, insulin pumps or other electro medical devices (collectively, "Medical Device") within the range of 15 cm (6 inches). If you are a user of any of these Medical Devices, DO NOT USE THE HEADSET UNLESS YOU HAVE CONSULTED WITH YOUR PHYSICIAN.
 - Do not store your headset near magnetic fields. Magnets, stripe cards, including credit cards, phone cards, passbooks, and boarding passes, may be damaged by magnetic fields.
 - Avoiding hearing damage
 - Permanent hearing loss may occur if you use your headset at a high volume.
 - Set the volume to a safe level. Over time you can become accustomed to a higher volume that may sound normal but can be damaging to your hearing.
 - If you experience ringing in your ears or muffled speech, stop listening and have your hearing checked.
 - The louder the volume, the less time that is required before your hearing could be affected.

Important Safety Information

Avoiding hearing damage

Permanent hearing loss may occur if you use your headset at a high volume.

Set the volume to a safe level. Over time you can become accustomed to a higher volume that may sound normal but can be damaging to your hearing.

If you experience ringing in your ears or muffled speech, stop listening and have your hearing checked. The louder the volume, the less time that is required before your hearing could be affected.

Hearing experts suggest that to protect your hearing:

- Limit the amount of time you use the headset at a high volume.
- Avoid turning up the volume to block out noisy surroundings.
- Turn the volume down if you can't hear people speaking near you.

Using headsets safely

Listening to music while operating a vehicle is not recommended and is illegal in some areas. Be careful and attentive while driving. Stop using this device if you find it disruptive or distracting while operating any type of vehicle or performing any other activity that requires your full attention.

Declaration of Confirmation

FCC NOTICE TO USERS:

This device complies with part 15 of the FCC Rules.

Operation is subject to the following two conditions:
(1) This device may not cause harmful interference, and
(2) This device must accept any interference received, including interference that may cause undesired operation.

Changes or modifications not expressly approved by the manufacturer or party responsible for compliance could void the user's authority to operate the equipment.

FCC Part 15.105 statement

This equipment has been tested and found to comply with the limits for a Class B digital device, pursuant to Part 15 of the FCC Rules.

These limits are designed to provide reasonable protection against harmful interference in a residential installation. This equipment generates, uses and can radiate radio frequency energy and, if not installed and used in accordance with the instructions, may cause harmful interference to radio communications.

However, there is no guarantee that interference will not occur in a particular installation. If this equipment does cause harmful interference to radio or television reception, which can be determined by turning the equipment off and on, the user is encouraged to try to correct the interference by one or more of the following measures:
- Reorient or relocate the receiving antenna.
- Increase the separation between the equipment and receiver.
- Connect the equipment into an outlet on a circuit different from that to which the receiver is connected.

- Consult the dealer or an experienced radio/TV technician for help.

To comply with the FCC RF exposure compliance requirements, no change to the antenna or the device is permitted. Any change to the antenna or the device could result in the device exceeding the RF exposure requirements and void the user's authority to operate the device.

Bluetooth[®] is a registered trademark of Bluetooth SIG, Inc. worldwide.

Additional Information

1. Radio frequency exposure

This Bluetooth wireless headset BCS-200 is a radio transmitter and receiver. When in operation it communicates with a Bluetooth-equipped mobile device by receiving and transmitting radio frequency (RF) electromagnetic fields (microwaves) in the frequency range 2.4 to 2.4835 GHz.

2. Bluetooth connection precautions

The following environments affect the range and reception of Bluetooth signals:

- When walls, metal, human bodies, or other obstacles exist between the Bluetooth device and the connected device.
- When equipment that uses 2.4 GHz frequency signals (wireless LANs, wireless phones, microwave ovens, etc.) is placed near the devices being used.

3. Potentially explosive atmosphere

Turn off your electronic device when in any area with a potentially explosive atmosphere. Although this is uncommon, your electronic device could generate sparks. Sparks in such areas could cause an explosion or fire resulting in bodily injury or even death. Areas with a potentially explosive atmosphere are often but not always clearly marked.

4. Emergency calls

IMPORTANT!

This Bluetooth headset and the electronic device connected to the headset, operate using radio signals and mobile and landline networks, as well as user-programmed functions, which cannot guarantee connection under all conditions. Therefore you should never rely solely upon any electronic device for essential communications (e.g., medical emergencies). Remember, in order to make or receive calls, the headset and the electronic device connected to the headset must be switched on and in a service area with adequate mobile signal strength. Emergency calls may not be possible on all mobile phone networks or when certain network services and/or phone features are in use. Check with your local service provider.

5. Battery information

A rechargeable battery has a long service life if treated properly. A new battery or one that has not been used for a long period of time could have reduced capacity the first few times it is used. Do not expose the battery to extreme temperatures, never above +50°C (+122°F) or below -10°C (+14°F). For maximum battery capacity, use the battery at room temperature. If the battery is used in low temperatures, the battery capacity will be reduced. The battery can only be charged in temperatures between +10°C (+50°F) and +45°C (+113°F).