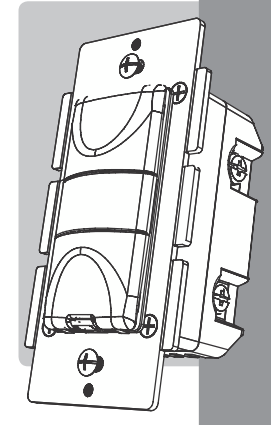


This device complies with part 15 of the FCC and Industry Canada Radiofrequency Interference Regulations. Operation is subject to the following conditions: 1. This device may not cause harmful interference... FCC NOTE: The manufacturer is not responsible for any radio-TV interference caused by unauthorized modifications to the equipment...

MANUAL • MANUEL • MANUAL



IN-WALL Smart Motion Dimmer French required Intelligent Gradateur sans fil Spanish de pared reductor inalámbrico de luz inteligente

Con approval conforme al paragrafo 15 de normativas FCC e/IC por el modelo... Nota de la FCC: Este dispositivo cumple con las disposiciones de la parte 15 de las normas FCC... Nota de la IC: Este dispositivo cumple con las disposiciones de la parte 15 de las normas FCC...

IN-WALL Smart Motion Dimmer French required Intelligent Gradateur sans fil Spanish de pared reductor inalámbrico de luz inteligente

DO NOT RETURN THIS STORE TO RETURN TO THE STORE NO PRODUCTO MAS SIN PRODUCTO A LA TIENDA.

If you have any problems or questions, contact our tech support team at: 1-800-453-4444, option 1. Mon-Fri 9 AM - 5 PM EST. This is our best point-of-contact product support, accessories, electronic (PDF) format manuals and more...

WARNING ADVERTENCIA

RISK OF FIRE, RISK OF ELECTRICAL SHOCK, RISK OF BURNS. CONTROLING APPLIANCES: CERTAIN ELECTRIC APPLIANCES MAY BE DAMAGED BY THIS DIMMER. READ THE USER MANUAL FOR THE APPLIANCE AND THE DIMMER'S USER MANUAL TO UNDERSTAND THE APPLIANCE'S REQUIREMENTS FOR OPERATION...

AVERTISSEMENT

RISQUE D'INCENDIE, RISQUE DE CHOC ÉLECTRIQUE, RISQUE DE BRÛLURES. CONTRÔLER LES APPLIQUÉS: CERTAINES APPAREILS ÉLECTRIQUES PEUVENT ÊTRE ENDOMMAGÉS PAR CE RÉGULATEUR. LIRE LE MANUEL D'UTILISATION DE L'APPLIQUÉ ET LE MANUEL D'UTILISATION DU RÉGULATEUR POUR COMPRENDRE LES EXIGENCES DE FONCTIONNEMENT DE L'APPLIQUÉ...

NE PAS UTILISER AVEC MÉTIERS À LA VIE ou ÉQUIPEMENT À LA VIE. NE PAS UTILISER AVEC MÉTIERS À LA VIE ou ÉQUIPEMENT À LA VIE. NE PAS UTILISER AVEC MÉTIERS À LA VIE ou ÉQUIPEMENT À LA VIE.

WARRANTY: JASCO Products warrants this product to be free from manufacturing defects for a period of one year from the original date of purchase...

WARRANTY: JASCO Products garantiza este producto de estar libre de defectos de fabricación durante un periodo de un año a partir de la fecha original de compra por parte del consumidor. Este producto es susceptible de ser dañado por el uso incorrecto o inadecuado de los productos de terceros...

WARRANTY: JASCO Products garantiza este producto de estar libre de defectos de fabricación durante un periodo de un año a partir de la fecha original de compra por parte del consumidor. Este producto es susceptible de ser dañado por el uso incorrecto o inadecuado de los productos de terceros...

JASCO Products Company, Building 8, 116 McMurray Blvd., Oklahton City, TX 73114

OPERATING TEMPERATURE: 32°F to 104°F (0°C to 40°C). OPERATING HUMIDITY: 5% to 95% RH. DIMMER SWITCH: 120VAC, 60Hz, 150W. DIMMER SWITCH: 120VAC, 60Hz, 150W.

FCC / ICZ 337800-0101. ICES 6644-210008. JASCO Products Company. Model# ZWAVE1000-26392. 26392 (REV. 03/16) (revised)

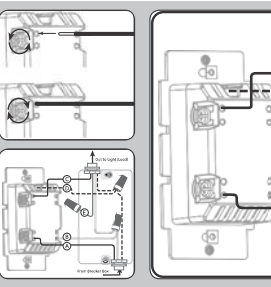
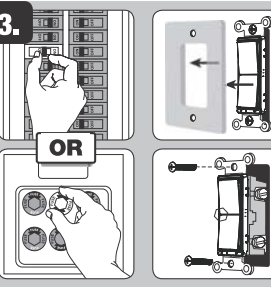
Tools You Will Need: Phillips screwdriver, Wire cutters, Wire strippers, Voltage tester.

Scan to view installation guide. Z-Wave Certified Wireless Lighting Control. Centre-Drive Commands and range extender. Control instructions for Elimination controller by Z-Wave®.

Z-WAVE INTEROPERABILITY: This product can be installed and operated by any Z-Wave network with other Z-Wave certified devices that are listed on the Z-Wave website...

INTEROPERABLE Z-WAVE: This device is interoperable with other Z-Wave devices. For more information on Z-Wave interoperability, visit the Z-Wave website...

Z-WAVE INTEROPERABILITY: This product can be installed and operated by any Z-Wave network with other Z-Wave certified devices that are listed on the Z-Wave website...



WARNING - SHOCK HAZARD: Turn OFF the power to the branch circuit for the switch before wiring the device. All wiring connections must be made with the POWER OFF to avoid personal injury and/or damage to the switch.

WARNING - SHOCK HAZARD: Turn OFF the power to the branch circuit for the switch before wiring the device. All wiring connections must be made with the POWER OFF to avoid personal injury and/or damage to the switch.

- 1. Top (Breaker) - Press to install dimmer on pass through terminal. 2. Bottom (Breaker) - Press to install dimmer on pass through terminal. 3. Single, Dual and Triple Gang Boxes: When installing the dimmer into a multi-gang pass box it may be necessary to break out one or both sides of the pass box...

- 4. Top (Breaker) - Press to install dimmer on pass through terminal. 5. Bottom (Breaker) - Press to install dimmer on pass through terminal. 6. Single, Dual and Triple Gang Boxes: When installing the dimmer into a multi-gang pass box it may be necessary to break out one or both sides of the pass box...

- 7. Mount the wall plate. 8. Realign power to be turned on/off at base or circuit breaker and test system. 9. Disconnect the light from the existing switch. 10. Connect the black wire that is going to the load to the power terminal.

- 7. Mount the wall plate. 8. Realign power to be turned on/off at base or circuit breaker and test system. 9. Disconnect the light from the existing switch. 10. Connect the black wire that is going to the load to the power terminal.

4. Adding your device to a Z-Wave network. 1. Follow the instructions for your Z-Wave certified controller to include the smart switch to the Z-Wave network. 2. Once the controller is ready to include your smart switch, single press and release the top or bottom switch on the smart switch to include it to the network.

5. Adding your device to a Z-Wave network. 1. Follow the instructions for your Z-Wave certified controller to include the smart switch to the Z-Wave network. 2. Once the controller is ready to include your smart switch, single press and release the top or bottom switch on the smart switch to include it to the network.

Programming options: Translation: Wire Holding & Press & Hold until the LED flashes 1x. Translation: Tap 3x. MODE: ON, OFF, DIMMER, SENSITIVITY, SCHEDULE. LEVEL: 1 to 5. TIME: 1 to 30. TO SET: A (1) to A (5).

7. The Jasco brand Add-on switch is required for Multi-Switch 3-way or 4-way installations. Connecting the transfer switch of this switch to a standard, non-Jasco brand switch may cause damage or result in improper function. If this switch is a 3-way or 4-way multi-switch installation, do not connect the transfer wire to any power outlet, except Jasco brand Add-on switches are correctly installed.