

LAUNCH INTO WATER:

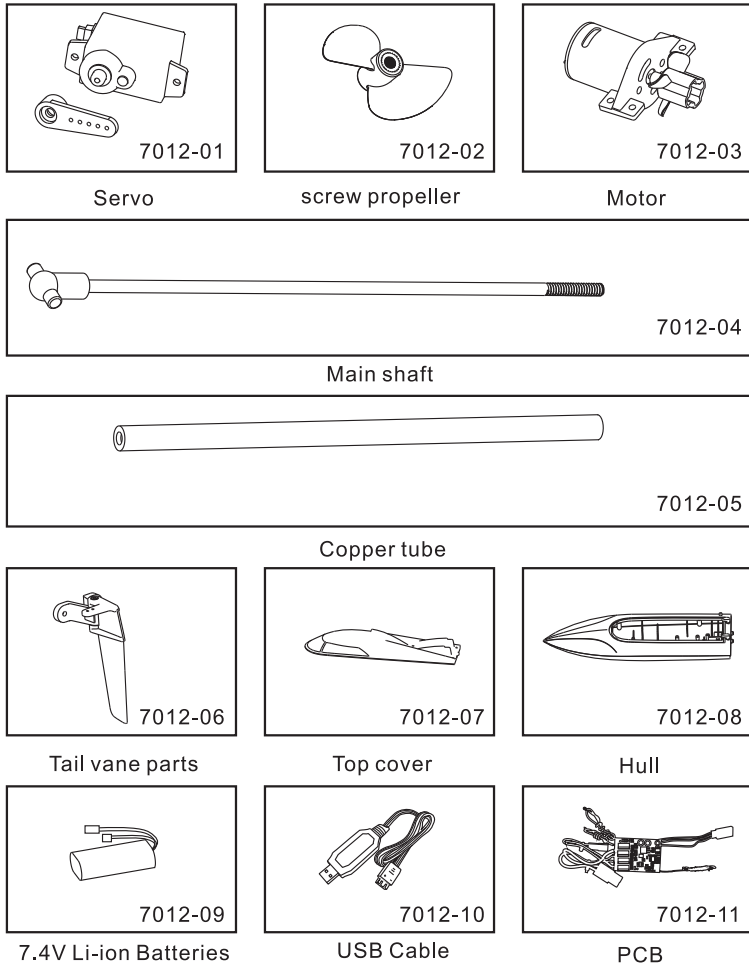
Note:

1. Users under the age of 14 must operate under the guidance of adults.
2. Users should not run the ship on water surface with swimmers to avoid injuring people;
3. Users should observe whether impurities exist in water or not before the ship is launched into water for running, if excessive impurities are available in water, the screw propeller can be stuck in navigation, we suggest that the model should not be operated on the water surface.
4. The remote control distance of the product is about 80m, please do not exceed the remote control range, otherwise the ship will loss control.

MAINTENANCE:

1. The battery should be taken off when the ship does not navigate.
2. The model surface should avoid long-term insolation of sunshine and oil taint to prevent lacquer painting damage, and the surface should be wiped cleanly with clear water after use.
3. When the model is not used for long time, water in the hull should be wiped to avoid component aging.
4. When the ship is not used for long time, the battery in the transmitter should be taken out to prevent the battery from leaking, thereby damaging remote controller;

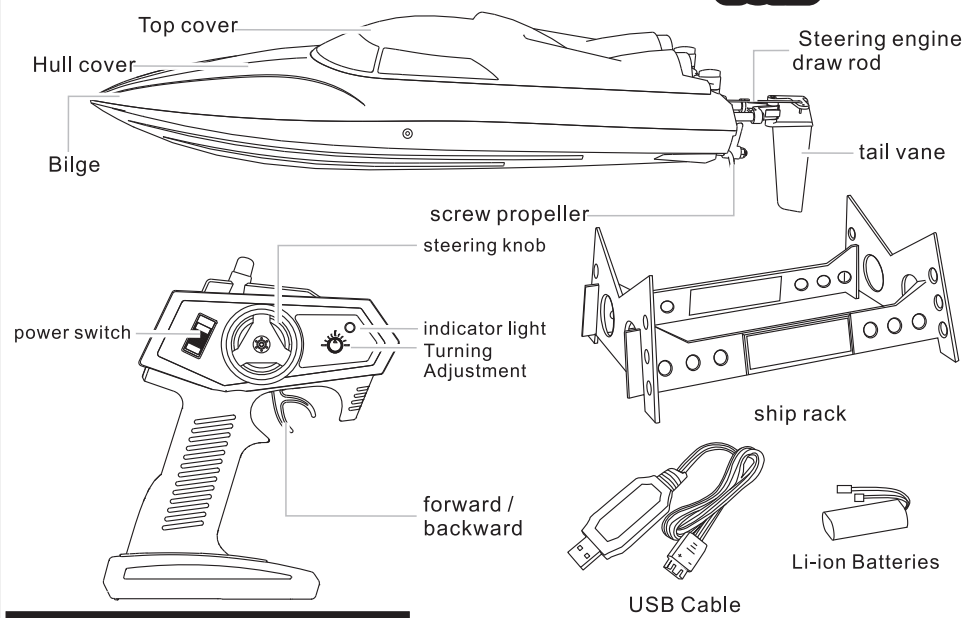
SPARE PARTS PICTURES:



NAME OF CONTAINED PARTS:

SHUANG MA[®]

7012



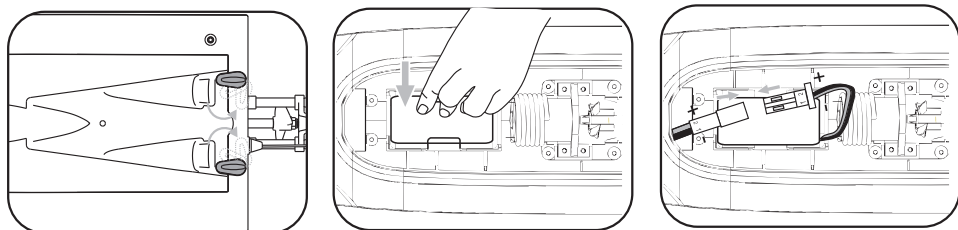
PRODUCT INTRODUCTION:

1. The product adopts water cooling system with 380 type main motor to complete power system, and adopts a standard 9g steering engine to complete the radio steering function.
2. It is configured with 7.4V Li-ion Batteries.
3. The maximum speed is about 5 m / s
4. Hull specifications: Hull length: 460mm Hull width: 120mm Hull height: 116mm

ATTENTION:

1. **ALIGNING CODE INSTRUCTION**
After the remote control and hull are installed with batteries, turn on the remote control switch. When the indicator light of the remote control turns green, the code matching is successful
2. **Function description of propeller against accidental injury**
After matching the remote with the ship successfully, the propeller can only run at a super low speed to prevent accident injure.
3. **Capsize Reversion :**
While the boat is capsized, quickly switching the trigger back and forth for normal functioning.
4. **Four modes of remote control indicator**
 1. Red and green flashing alternately: the remote control is not matched
 2. Green light: successful code matching, normal ship
 3. Red light: when the power of the ship is low, the speed will slow down. In this state, the ship needs to be driven back to replace the battery
 4. Flashing green light: the remote control distance of the ship is too far, and the speed will slow down. In this state, the ship needs to move back
 5. Flashing red light: remote control battery needs to be replaced in case of low power
5. **Voice alert description**
 1. Intermittent alert sound: instruction base on the modes of remote indicator.
 2. Long time alert sound: the ship is out of power or the propeller is stuck

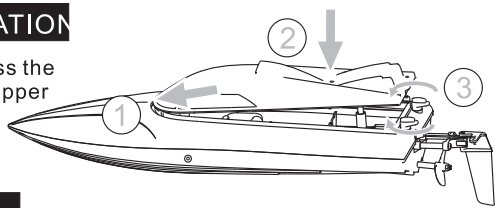
BATTERY INSTALLATION:



1. The ship is placed at the ship rack, and please confirm that the ship hull cover can be taken out after being placed flatly;
2. The Li-ion Batteries placed into the battery holder of the hull.
3. The battery is connected with a faucet on a receiving plate.

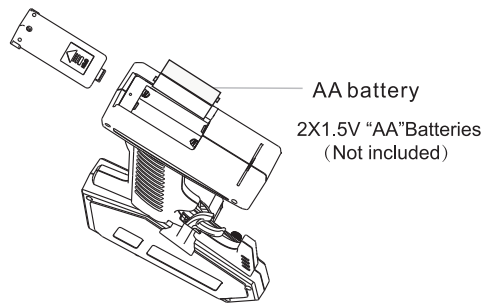
SHIP TOP COVER INSTALLATION

Insert the top cover into the hull, press the top cover lightly, and then turn the caper button until the top cover is tightened up. (as illustrated)



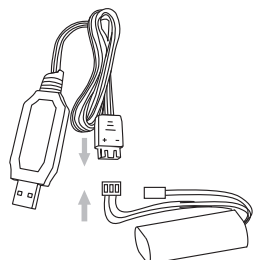
ASSEMBLY TRANSMITTER:

Battery installation: open the battery cover of the remote controller, place AA alkaline batteries correctly according to electrode indication in the battery box, and then cover the battery cover, and tighten the screw. (as illustrated)

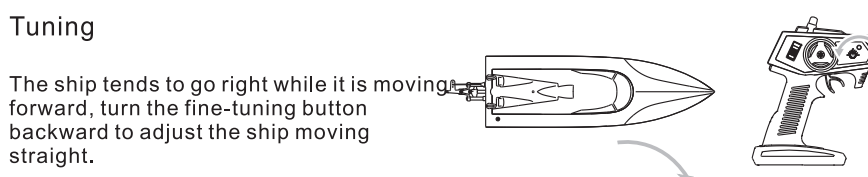
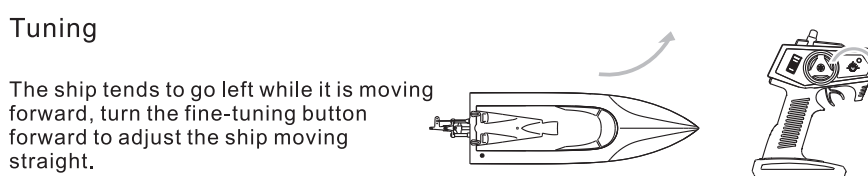
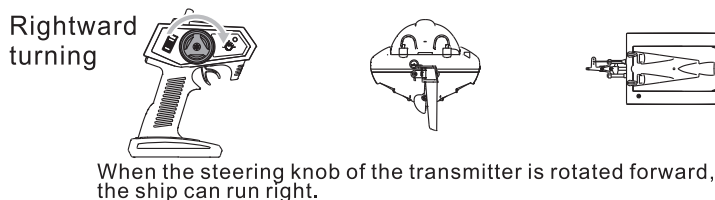
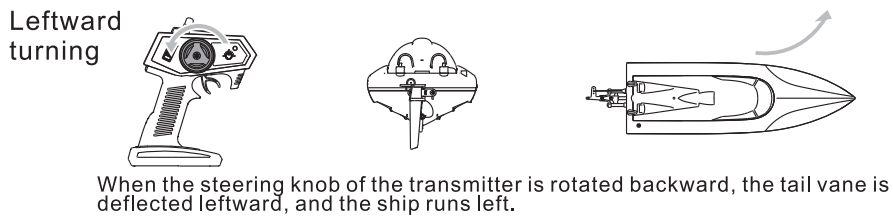
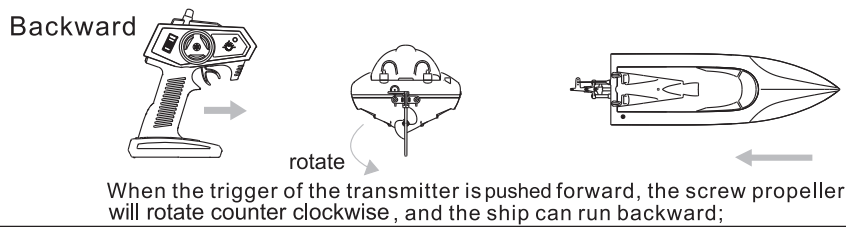
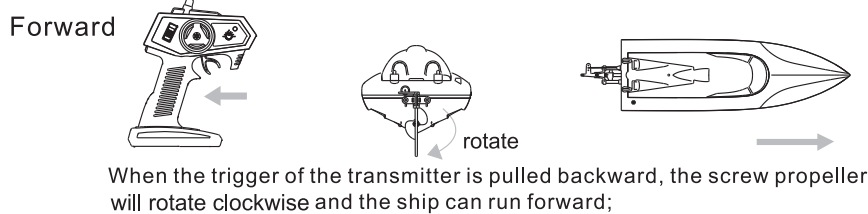


CHARGING THE POWER BATTER

1. The USB cable is connected to the power supply (the battery is not connected)
indicator light on: the power supply is working normally and ready to be used.
2. Connect battery wires for charging
Indicator light on: Charging
Indicator light off: Charging complete



OPERATION



FCC Warning Statement Changes or modifications not expressly approved by the party responsible for compliance could void the user's authority to operate the equipment. This equipment has been tested and found to comply with the limits for a Class B digital device, pursuant to Part 15 of the FCC Rules. These limits are designed to provide reasonable protection against harmful interference in a residential installation. This equipment generates uses and can radiate radio frequency energy and, if not installed and used in accordance with the instructions, may cause harmful interference to radio communications. However, there is no guarantee that interference will not occur in a particular installation. If this equipment does cause harmful interference to radio or television reception, which can be determined by turning the equipment off and on, the user is encouraged to try to correct the interference by one or more of the following measures:

- Reorient or relocate the receiving antenna.
- Increase the separation between the equipment and receiver.
- Connect the equipment into an outlet on a circuit different from that to which the receiver is connected.
- Consult the dealer or an experienced radio/TV technician for help.

This device complies with part 15 of the FCC Rules. Operation is subject to the following two conditions: (1) This device may not cause harmful interference, and (2) this device must accept any interference received, including interference that may cause undesired operation.