

Annex B

1-5450/17-01-01_AnnexB

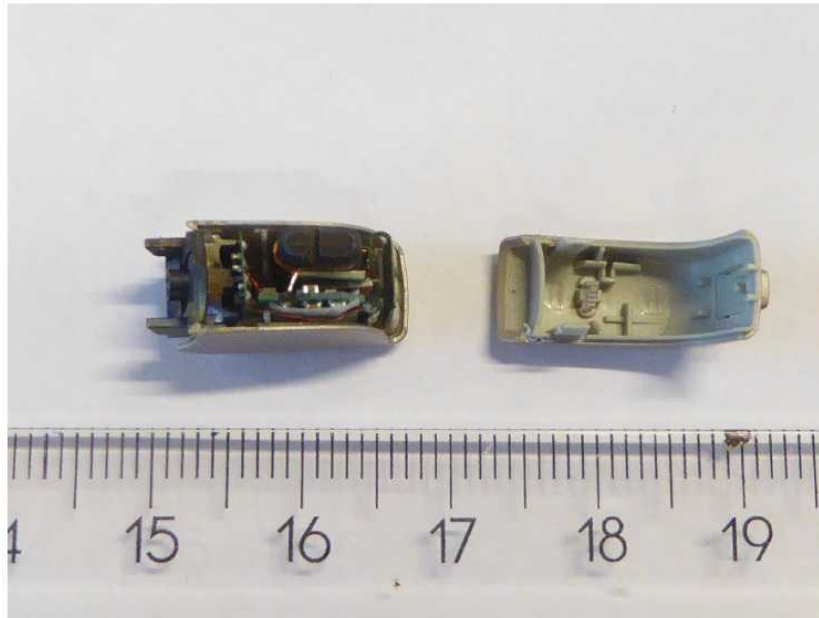
Internal photos of the Equipment Under Test

This test report is electronically signed and valid without handwritten signature.
For verification of the electronic signatures, the public keys can be requested at the testing laboratory.

Document authorized:

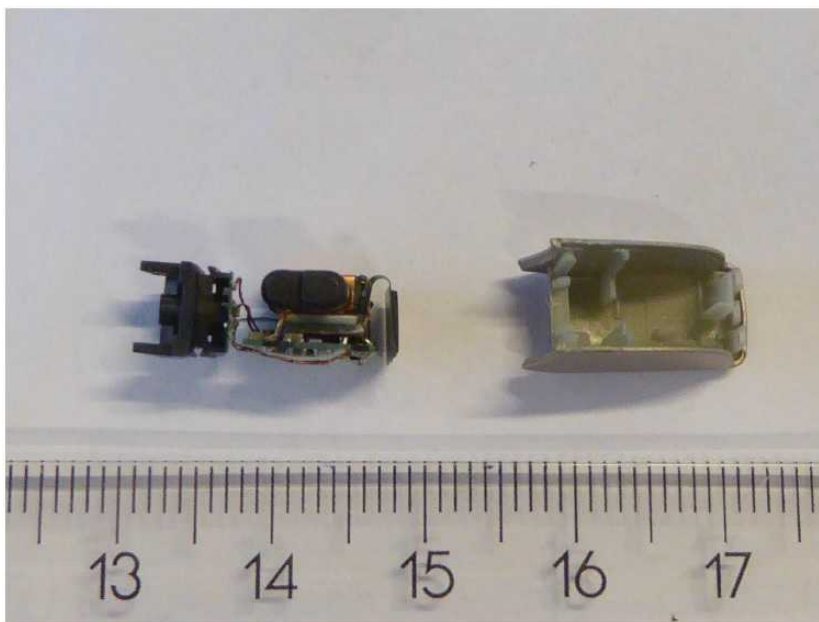
Christoph Schneider
Lab Manager
Radio Communications & EMC

Photos



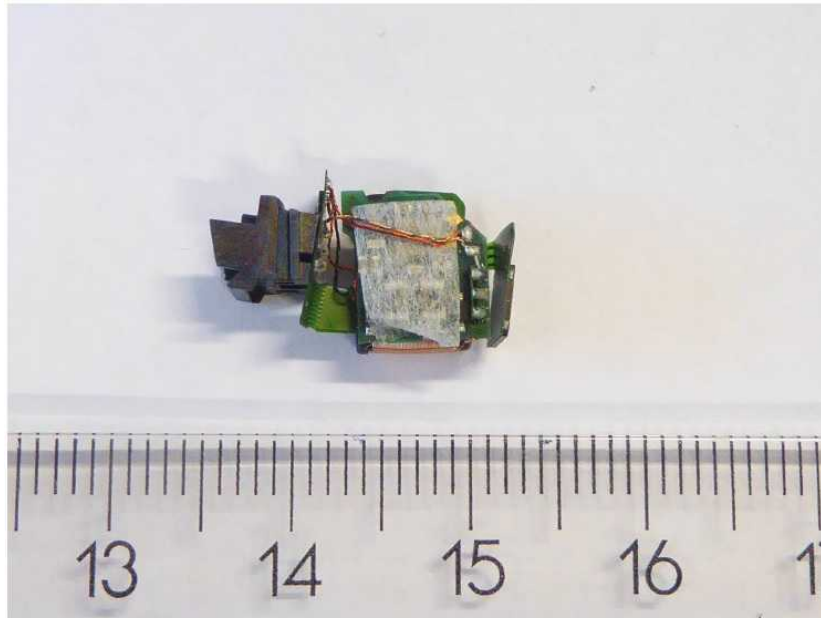
R12G2 adapter front shell removed

Photo 1



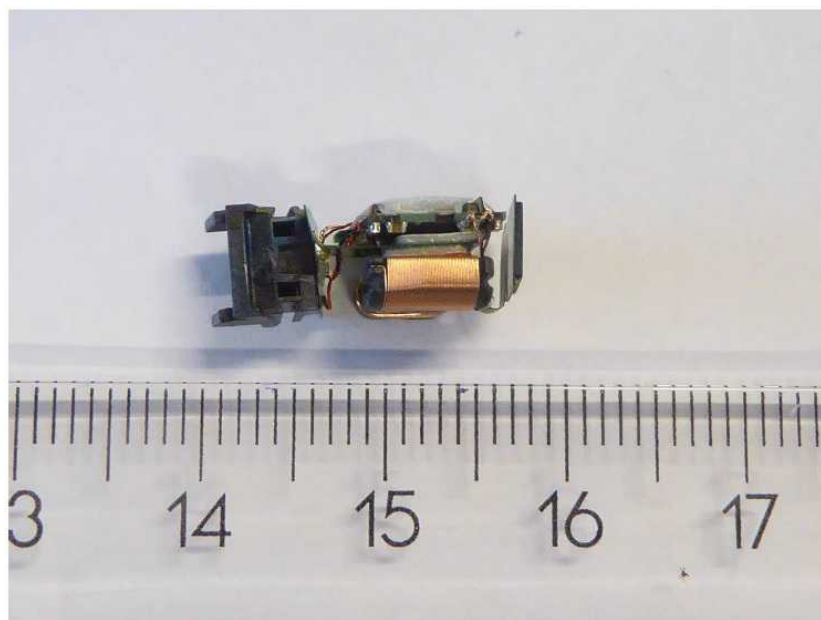
R12G2 adapter with PCB stack removed from back part

Photo 2



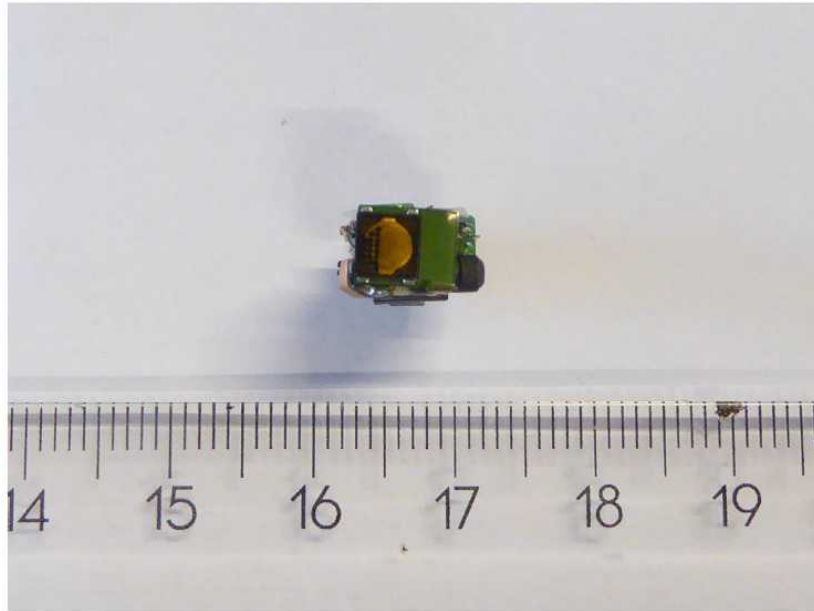
R12G2 adapter with PCB stack left side

Photo 3



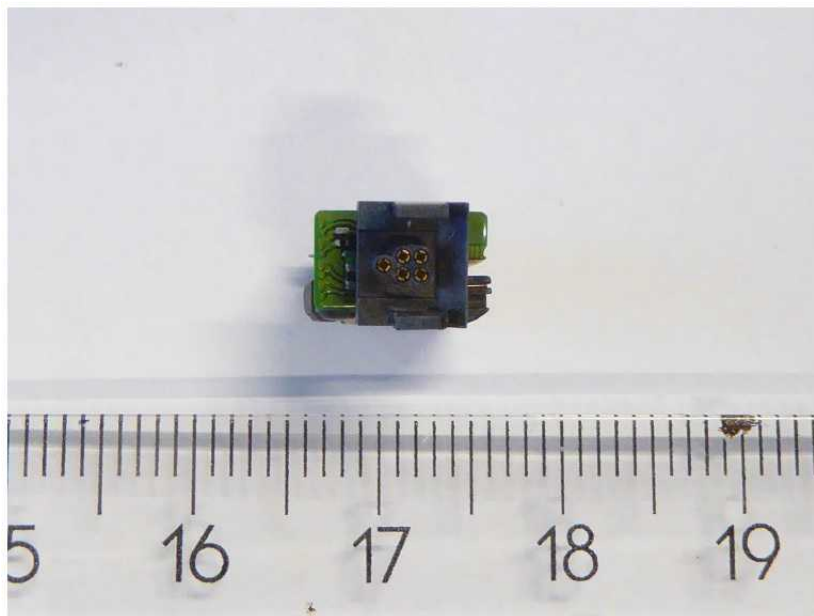
R12G2 adapter with PCB stack top side

Photo 4



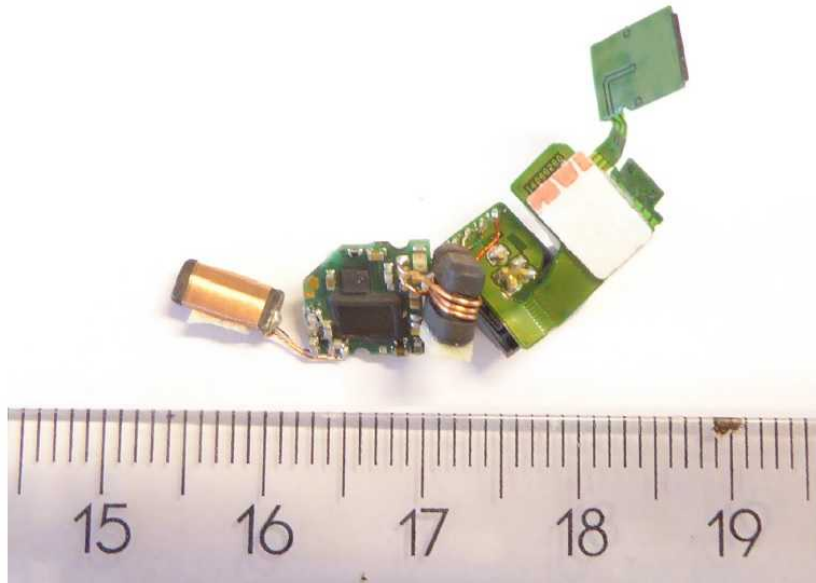
R12G2 adapter with PCB stack bottom view

Photo 5



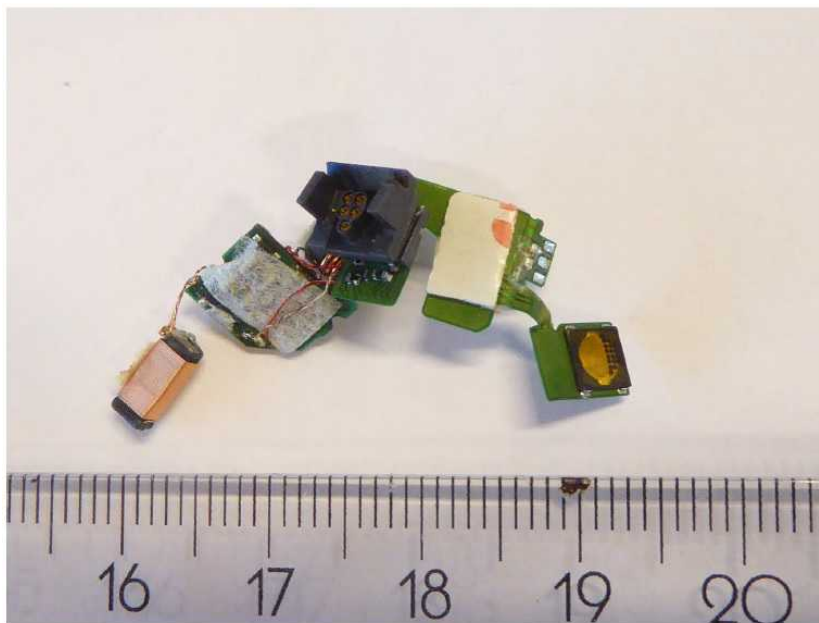
R12G2 adapter with PCB stack connector view

Photo 6



R12G2 adapter with PCB stack unfolded top side

Photo 7



R12G2 adapter with PCB stack unfolded back side

Photo 8

Document history

Version	Applied changes	Date of release
	initial release	2018-06-29
