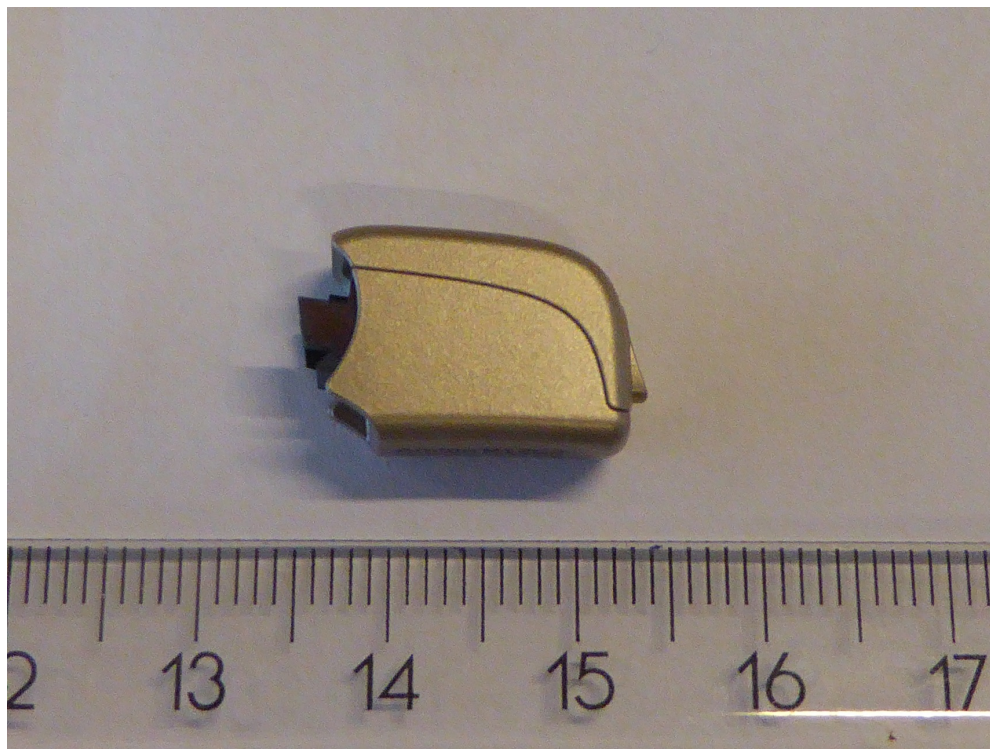
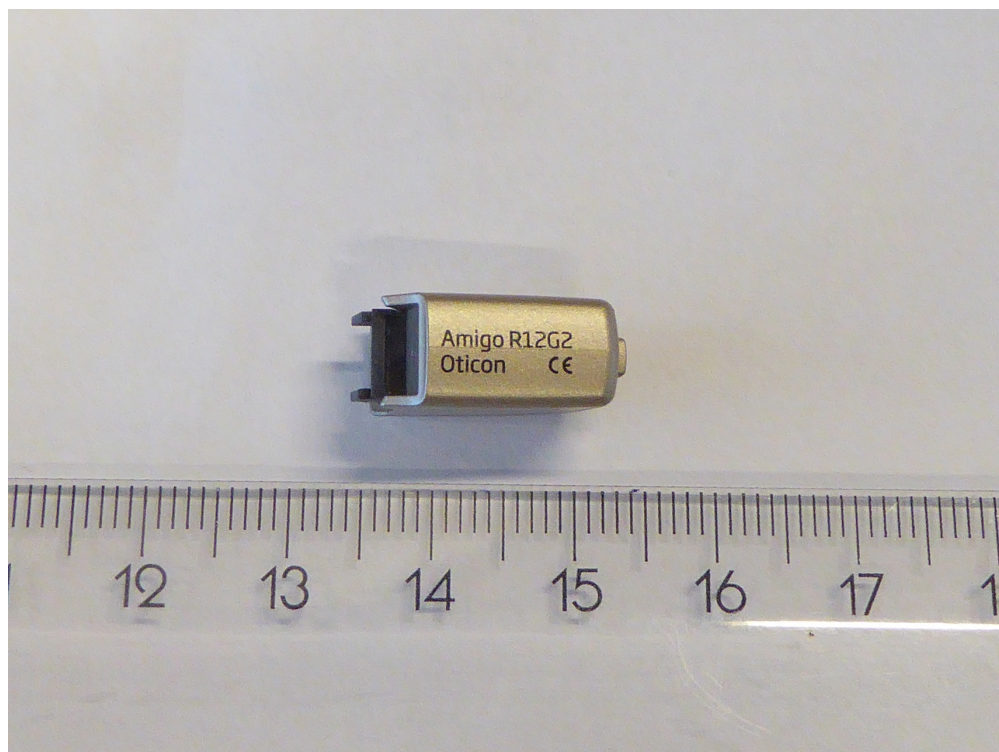


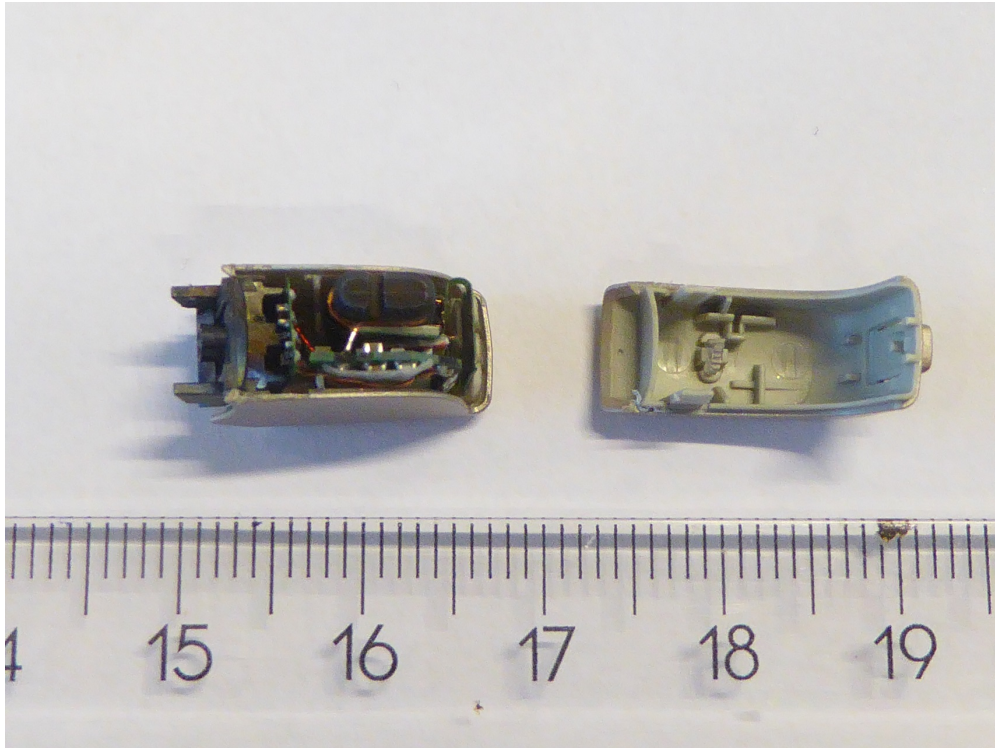
Internal pictures R12G2, Dedicated FM adapter



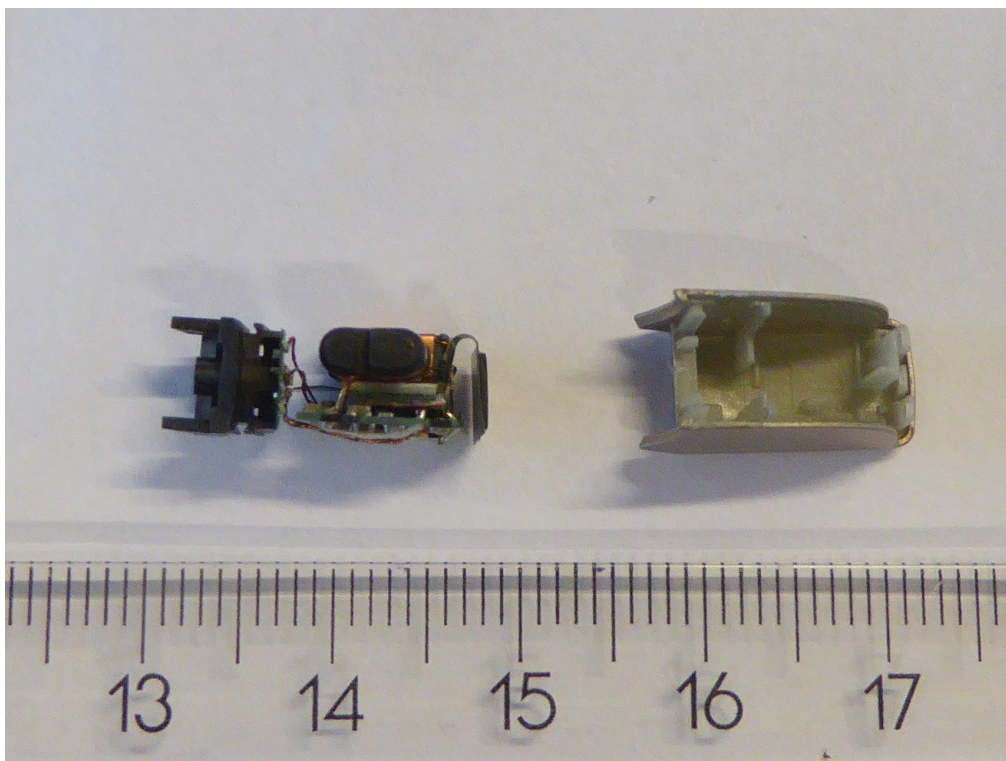
R12G2 adapter side view



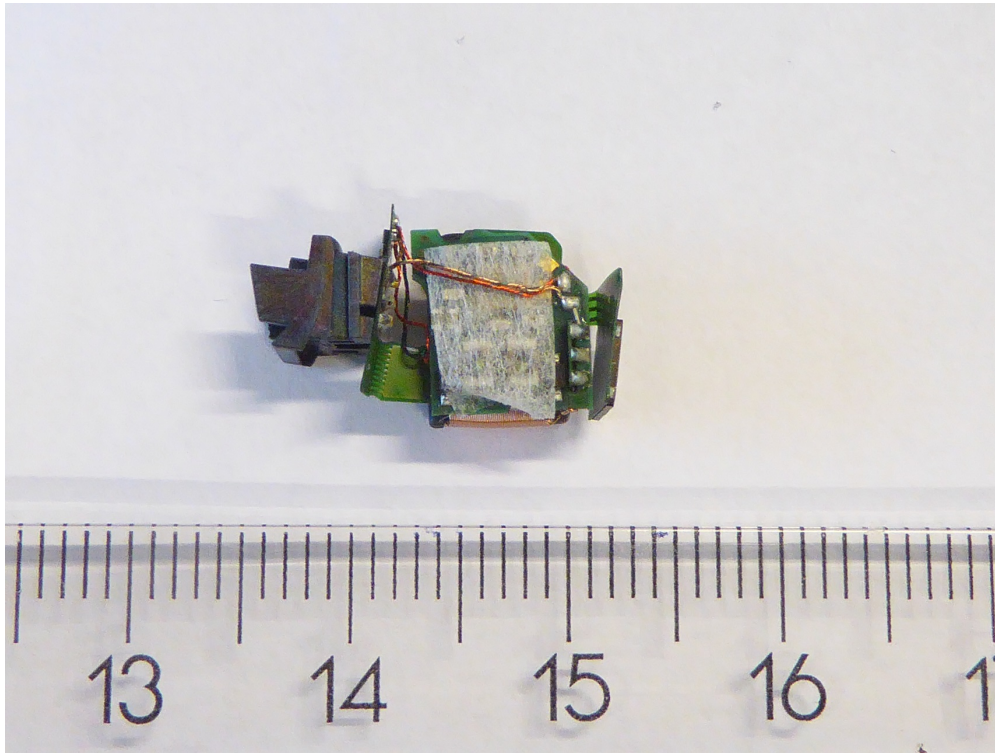
R12G2 adapter back side



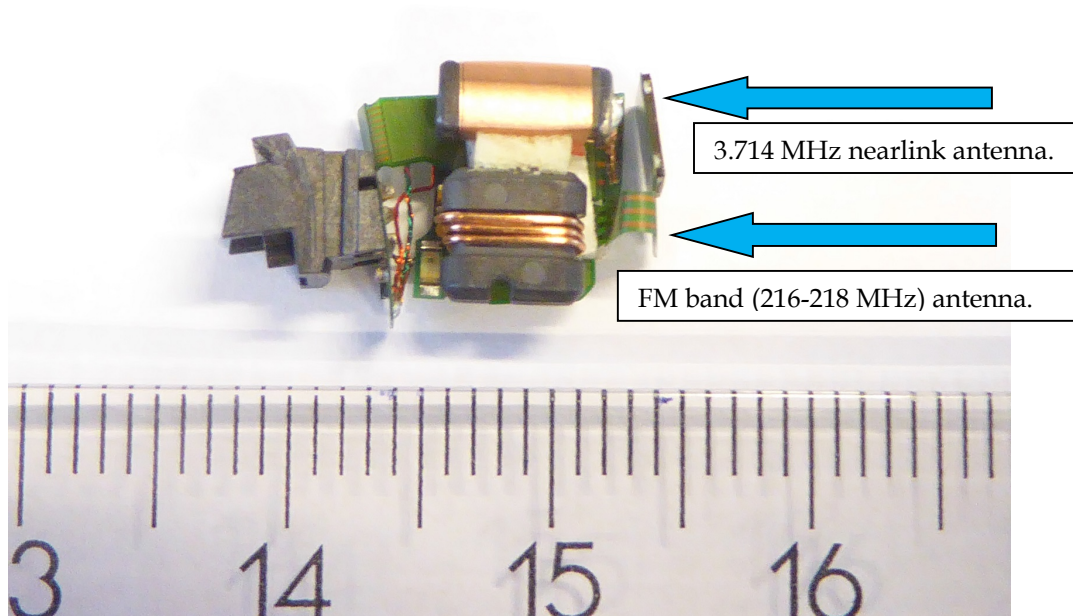
R12G2 adapter front shell removed



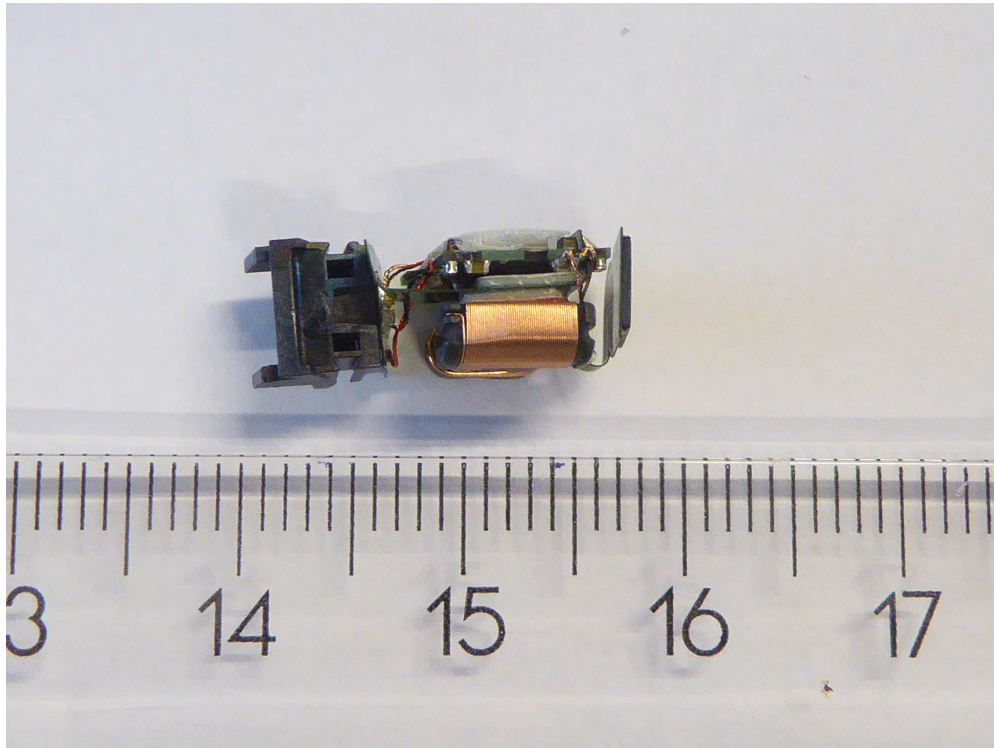
R12G2 adapter with PCB stack removed from back part



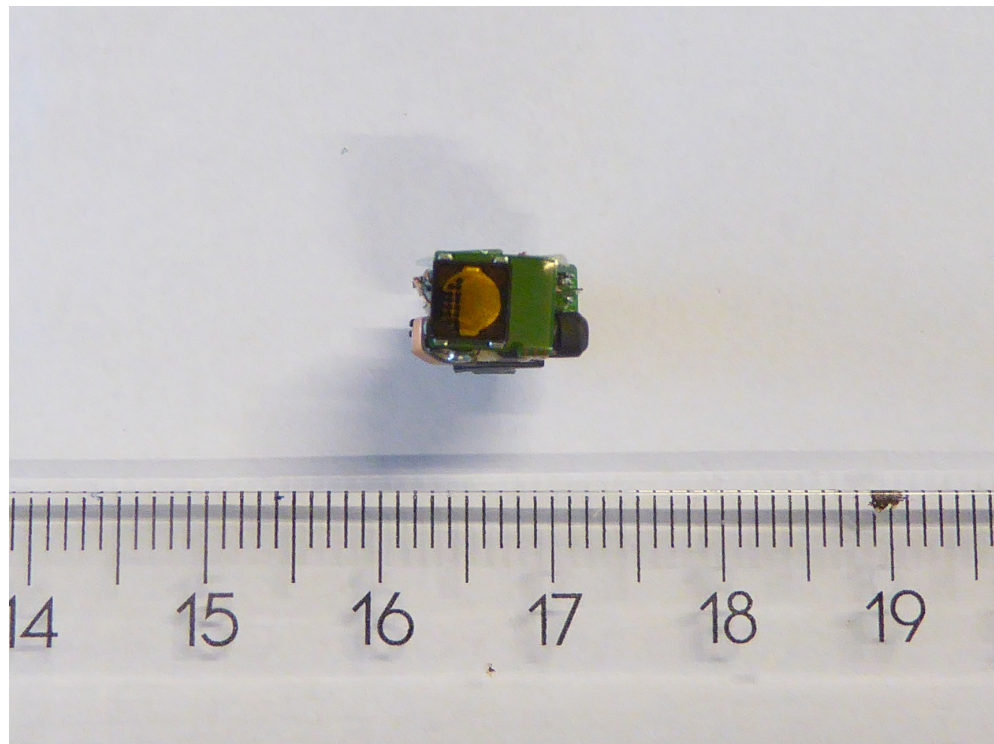
R12G2 adapter with PCB stack left side



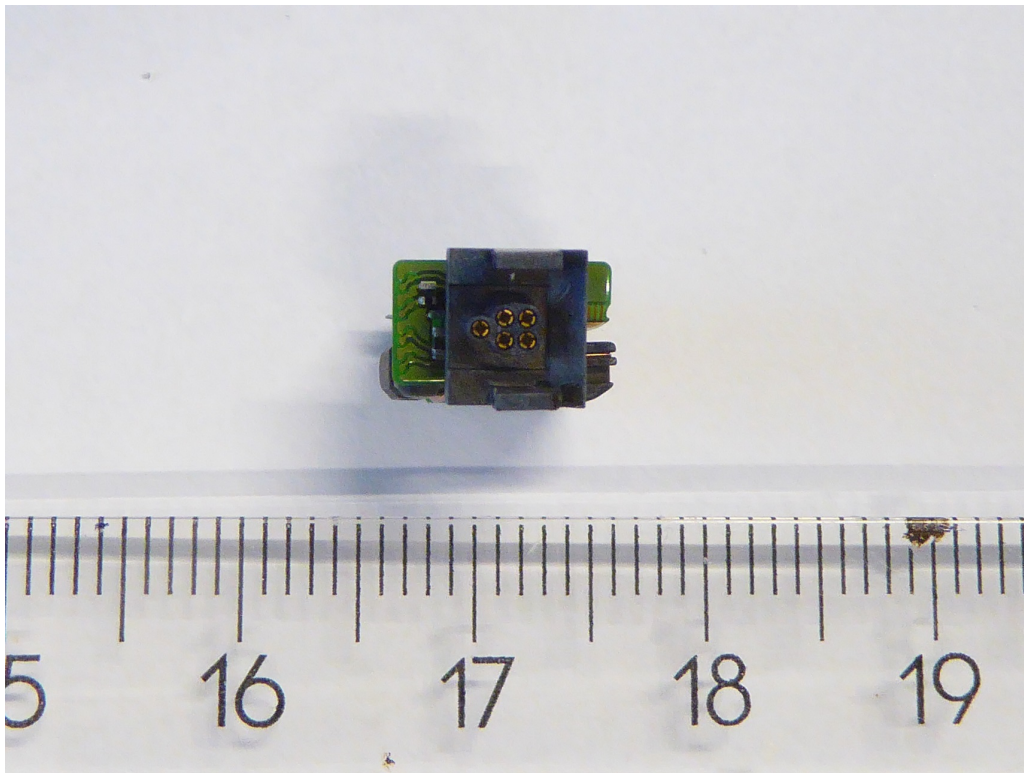
R12G2 adapter with PCB stack right side



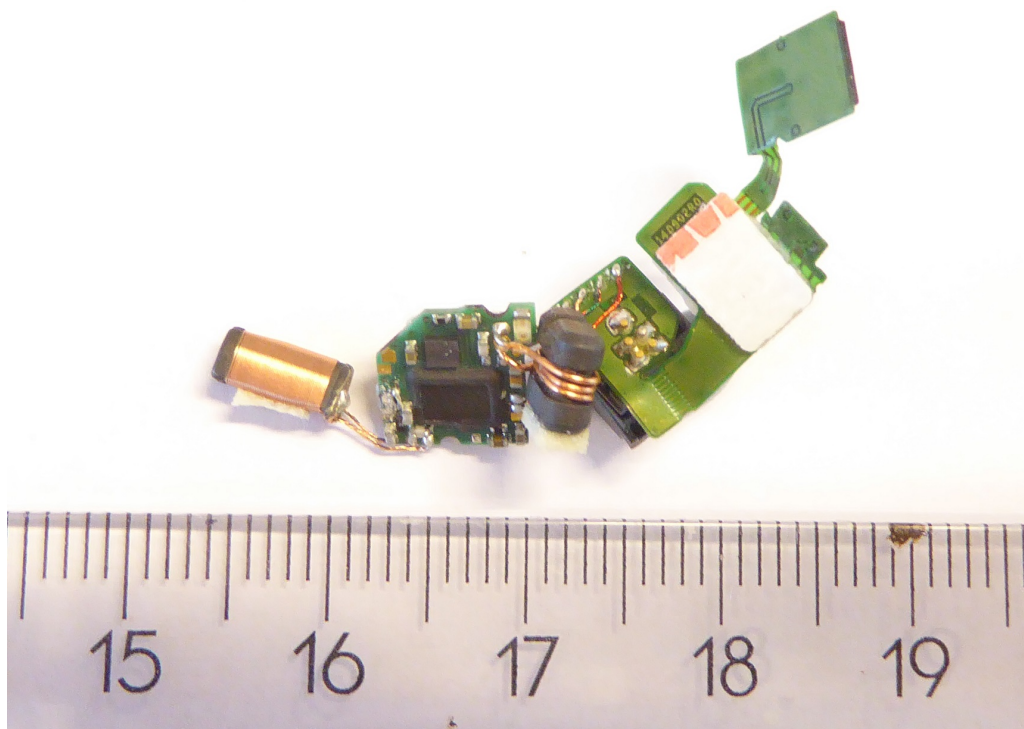
R12G2 adapter with PCB stack top side



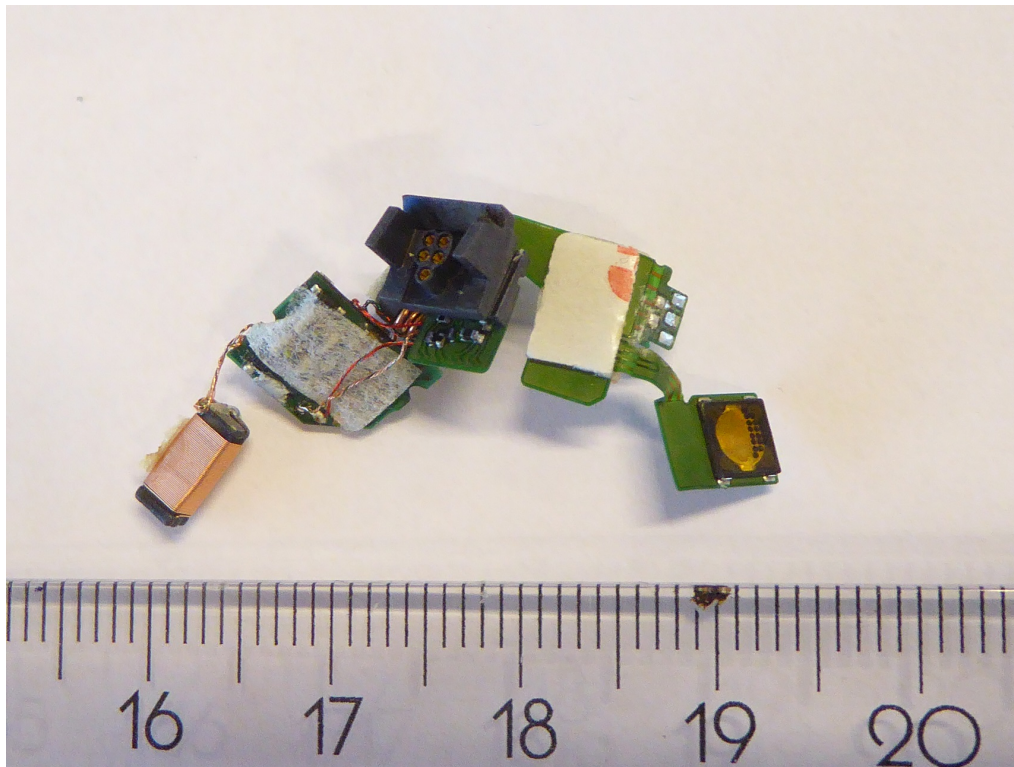
R12G2 adapter with PCB stack bottom view



R12G2 adapter with PCB stack connector view



R12G2 adapter with PCB stack unfolded top side



R12G2 adapter with PCB stack unfolded back side