

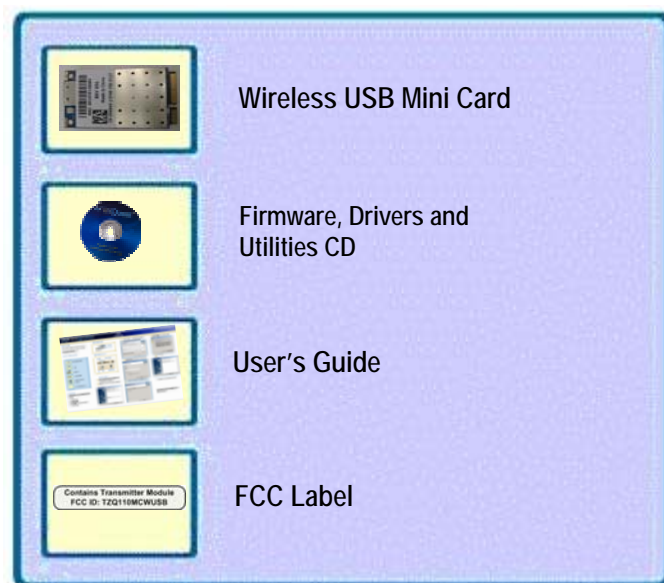
Before You Begin

Before you begin the installation of the products, please check to make sure that the following items are included in your package.

Operating Systems Requirements:

Windows VISTA (32/64-bit) or Windows XP

Check Your Package Contents



Guide Overview

This Guide will take you step-by-step through several key setup features before using your Wireless USB Mini Card. This guide covers:

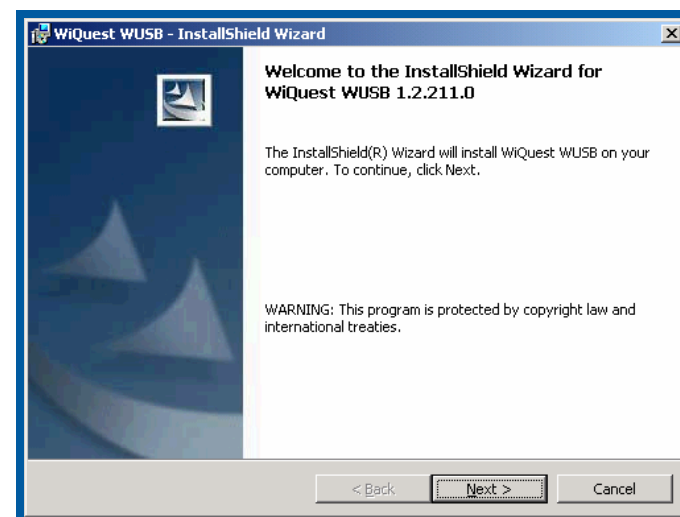
- Package Contents
- Hardware Diagrams
- Software Installation
- Driver installation for the Wireless USB Mini Card
- Security Setup
- Firmware upgrade

Wireless USB Mini Card

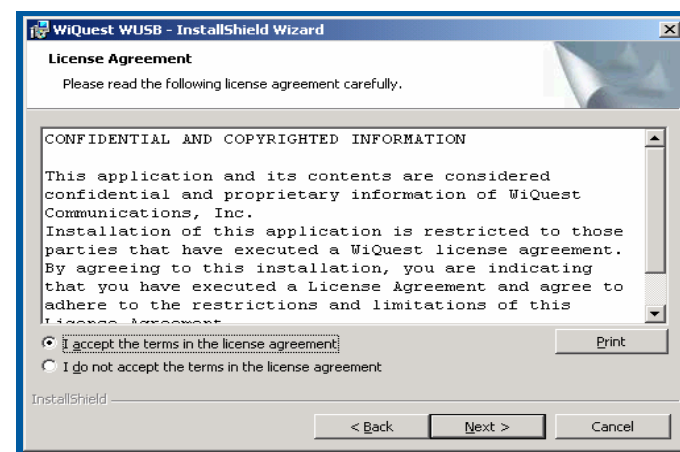


Software Installation

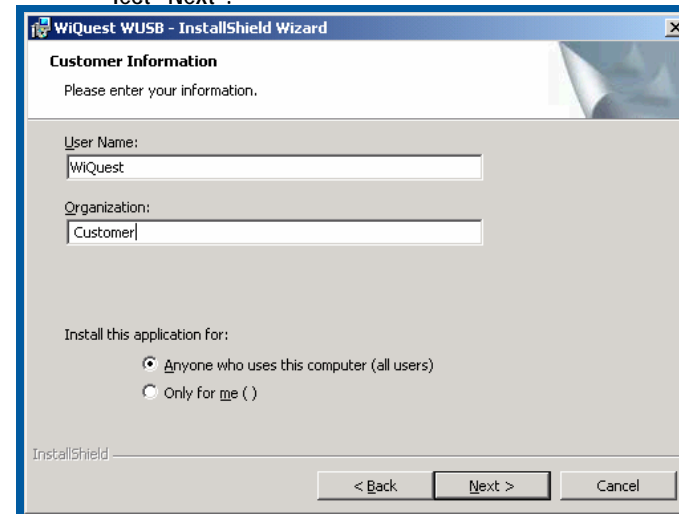
- 1 Before inserting your wireless USB Mini-card, insert the CD into your notebook PC. The installation will start automatically.
- 2 Select "Next" when you are prompted by the Welcome screen.



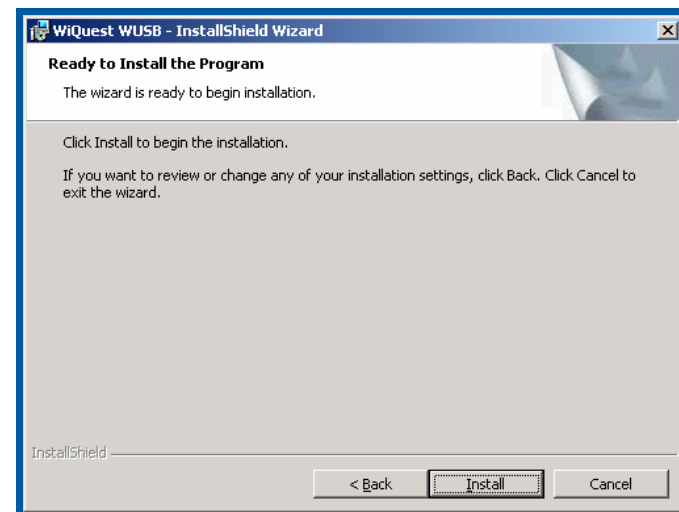
- 3 Select "I accept...", then "Next" when prompted to accept the terms of the License Agreement.



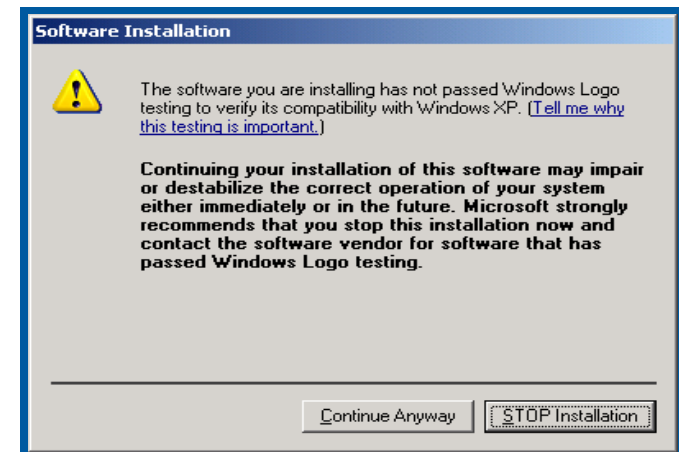
- 4 Enter the appropriate information as requested and select "Next".



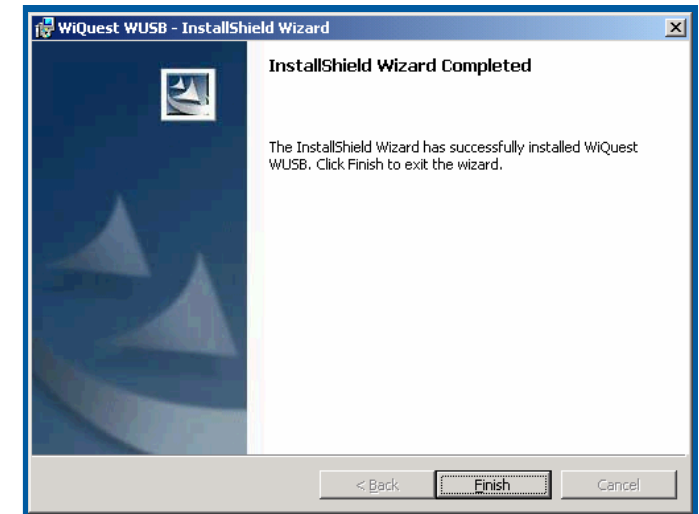
- 5 Select "Install" to begin the installation process.



- 6 When prompted select "Continue Anyway". Select "Finish".



- 7 Select "Finish".



Next Steps

Now that the basic software is installed, the next steps will guide you through the simple procedure to load the drivers for the Wireless USB Mini Card.

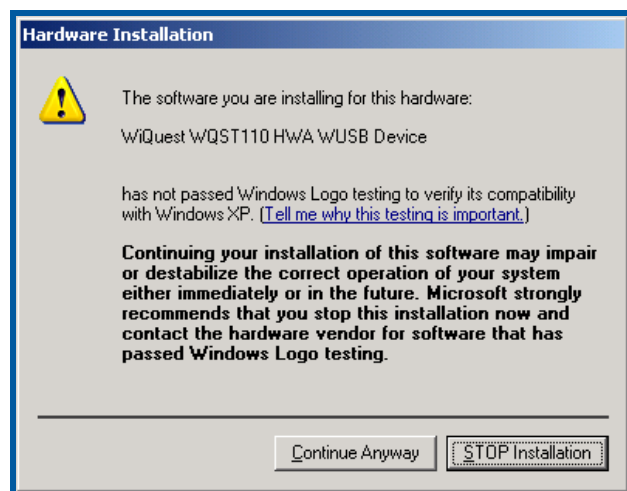
For future updates, the software will automatically detect if the drivers need to be loaded. For future updates, you should always perform the firmware updates as described in this document.

Wireless USB Mini-card Driver Install

- 8 Insert the Wireless USB Mini Card into the PC WPAN slot. Connect the blue antenna cable to the connector on the Wireless USB Mini Card. Place the cover and tighten the screws.



- 9 The WiQuest Control Center (WiCC) application will detect the Wireless USB Mini Card as new hardware. A pop-up notification will be presented in the bottom, right corner of your desktop.
- 10 WiCC will automatically start the driver install. Select "Continue Anyway" for each of the 4 drivers.



- 11 WiCC will present a bubble message when the installation of the driver for the Mini Card is complete.

FCC Statement

DECLARATION OF CONFORMITY WITH FCC RULES FOR ELECTROMAGNETIC COMPATIBILITY
We, WiQuest Communications, Inc., 915 Enterprise Blvd, Suite 200, Allen, TX 75013, declare under our sole responsibility that the product FCC ID:TZQWQ110MC to which this declaration relates: Complies with Part 15 of the FCC Rules. Operation is subject to the following two conditions: (1) this device may not cause harmful interference, and (2) this device must accept any interference received, including interference that may cause undesired operation.

Operational Limitations

FCC 47 CFR Section 15.519 (a) (1)
A UWB device operating under the provisions of this section shall transmit only when it is sending information to an associated receiver. The UWB intentional radiator shall cease transmission within 10 seconds unless it receives an acknowledgement from the associated receiver that its transmission is being received. An acknowledgment of reception must continue to be received by the UWB intentional radiator at least every 10 seconds or the UWB device must cease transmitting.
FCC 47 CFR Section 15.519 (a) (2)
The use of antennas mounted on outdoor structures, *e.g.*, antennas mounted on the outside of a building or on a telephone pole, or any fixed outdoors infrastructure is prohibited. Antennas may be mounted only on the hand held UWB device.
FCC 47 CFR Section 15.519 (a) (3)
UWB devices operating under the provisions of this section may operate indoors or outdoors.

FCC Label on the Wireless USB Mini-Card



Exterior FCC Label on the PC

IMPORTANT: Please remove the FCC label supplied with the kit and affix it to the bottom side of the Notebook.

Contains Transmitter Module
FCC ID: TZQWQ110MC