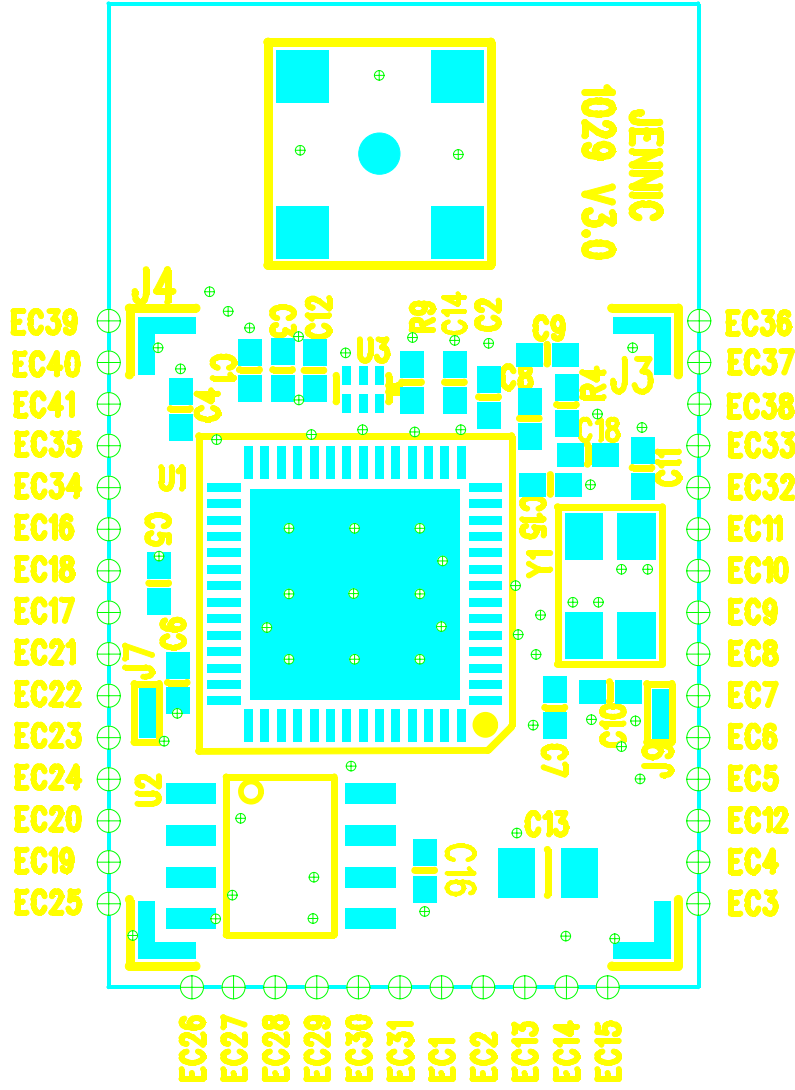
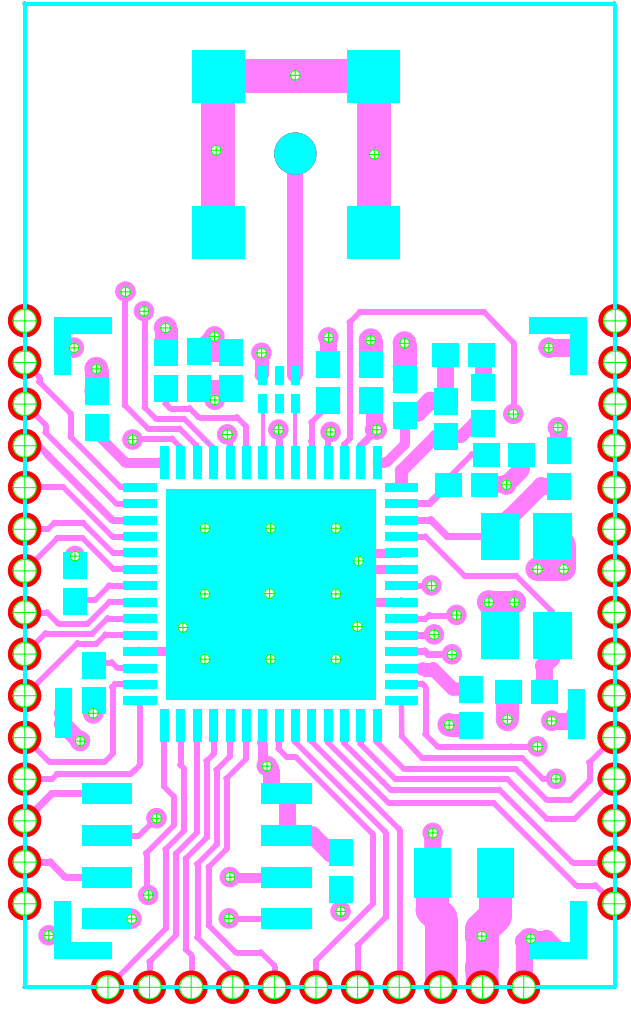


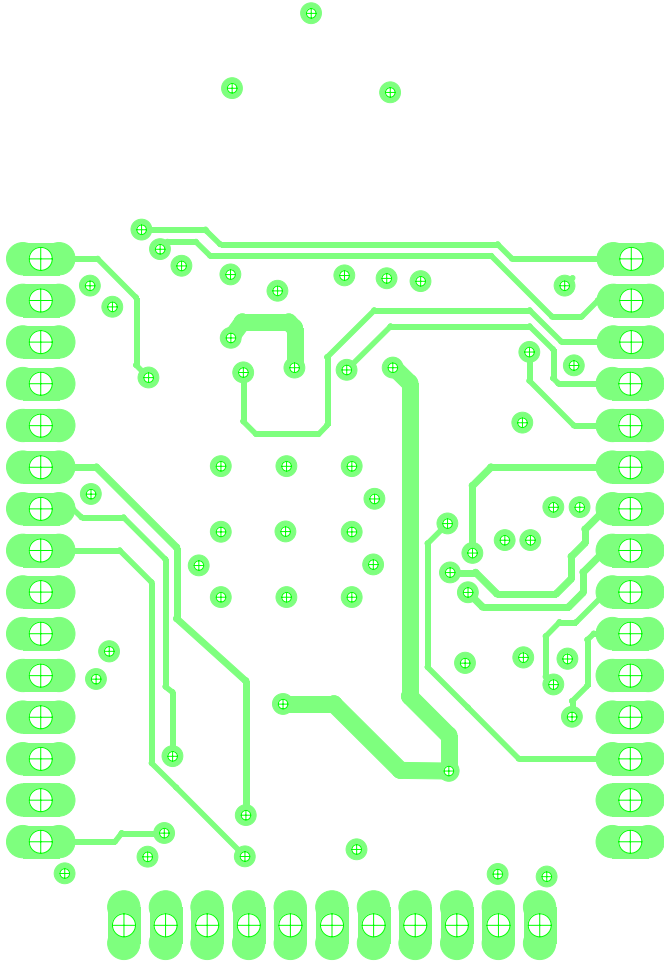
Silk Screen



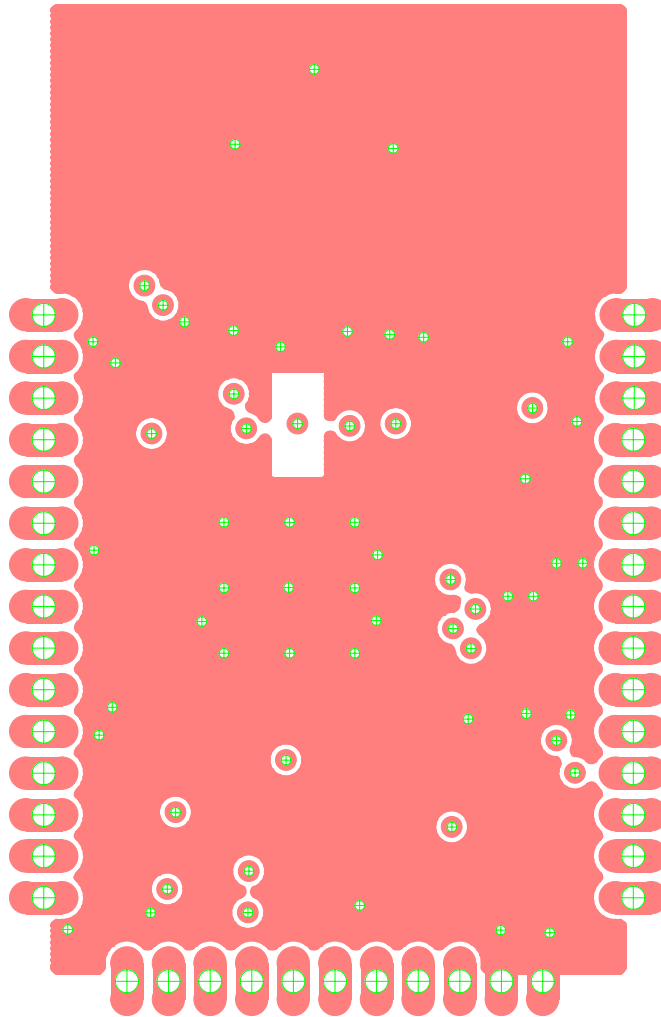
Top

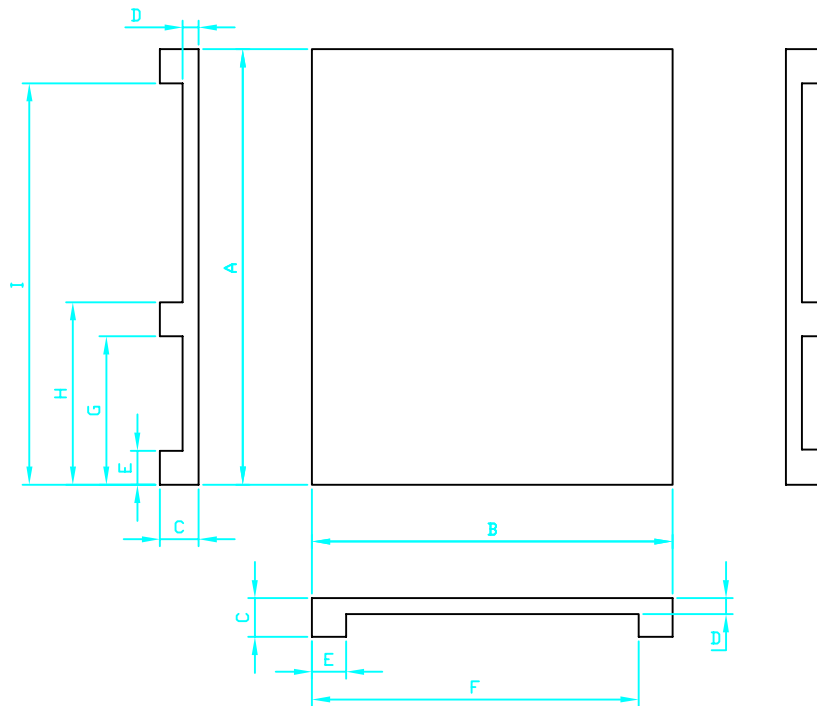


Bottom



Ground Plane





| A     | B     | C     | D    | E    | F     |
|-------|-------|-------|------|------|-------|
| 19.20 | 15.90 | 1.70  | 0.70 | 1.50 | 14.40 |
| G     | H     | I     |      |      |       |
| 6.55  | 8.05  | 17.70 |      |      |       |

Notes :

1. MATERIAL: COPPER NICKLE SHEETS AND PLATES C7521H  $t=0.15$
2. THE THICKNESS MUST KEEP TO 80% THICKNESS OF MATERIAL ON BEND POINT
3. BURR HEIGHT CAN'T EXCEED 5% OF METAL THICKNESS AND BURR SIDE TO BE INSIDE
4. PART TO BE CLEAN AND FREE OF TOOL MARK AND CHIP
5. PRODUCTS MUST BE THE SAME AS ENGINEERING APPROVAL SAMPLE
5. DIAGRAM SHOWS FOLDED DIMENSIONS

Dimensions in mm tolerance  $\pm 0.05$

|  |                 |                            |                 |
|--|-----------------|----------------------------|-----------------|
| Rev: 1.1   | Change Ref: XXX | Drawing Name<br>Module Can |                 |
| Drawn By: R Hulley   | Date: 11/09/06  | Drawing No<br>DR001045     |                 |
| Checked BY: L Mitchell   | Date: 11/09/06  | Third Angle Projection     |                 |
| Approved By: XXX   | Date: XX/XX/XX  | Scale<br>3:1               | Sheet<br>1 of 1 |
|  |                 |                            | A4              |
| Jennic Ltd<br>Furnival Street<br>Sheffield<br>S1 4QT<br>United Kingdom |                 |                            |                 |